

**NEW MEXICO OIL CONSERVATION COMMISSION
WELL LOCATION AND ACREAGE DEDICATION PLAT**

Form C-102
Supersedes C-128
Effective 1-1-65

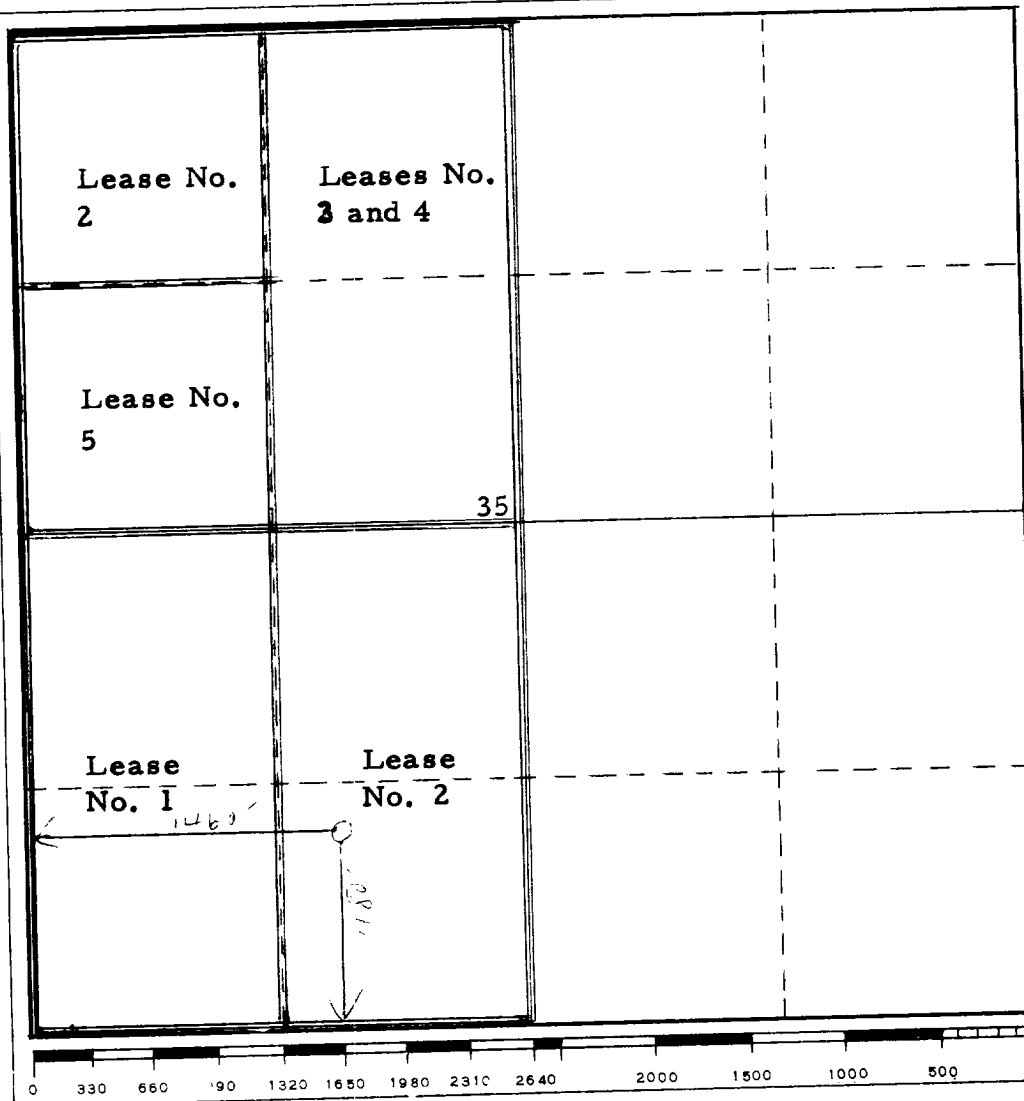
All distances must be from the outer boundaries of the Section.

Operator Consolidated Oil & Gas, Inc.			Lease Tafoya		Well No. 1
Unit Letter N	Section 35	Township 32 North	Range 13 West	County San Juan	
Actual Footage Location of Well: 1460 feet from the West line and 1150 feet from the South line					
Ground Level Elev. 5869	Producing Formation Mesaverde		Pool Blanco-Mesaverde		Dedicated Acreage: 320 Acres

- Outline the acreage dedicated to the subject well by colored pencil or hachure marks on the plat below.
- If more than one lease is dedicated to the well, outline each and identify the ownership thereof (both as to working interest and royalty).
- If more than one lease of different ownership is dedicated to the well, have the interests of all owners been consolidated by communitization, unitization, force-pooling, etc?

☒ Yes ☐ No If answer is "yes," type of consolidation **Communitization Agreement**

If answer is "no," list the owners and tract descriptions which have actually been consolidated. (Use reverse side of this form if necessary.) _____
No allowable will be assigned to the well until all interests have been consolidated (by communitization, unitization, forced-pooling, or otherwise) or until a non-standard unit, eliminating such interests, has been approved by the Commission.



CERTIFICATION

I hereby certify that the information contained herein is true and complete to the best of my knowledge and belief.

Wayne Rogers
Name

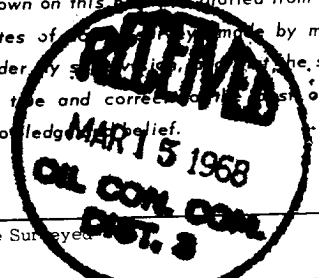
E. Wayne Rogers
Position

Production Manager

Company
Consolidated Oil & Gas, Inc.

Date
March 13, 1968

I hereby certify that the well location shown on this plat was plotted from field notes of _____ made by me or under my supervision, and that the same is true and correct to the best of my knowledge and belief.



Date Surveyed

Registered Professional Engineer
and/or Land Surveyor

Certificate No.