

UNITED STATES
DEPARTMENT OF THE INTERIOR
GEOLOGICAL SURVEY

APPLICATION FOR PERMIT TO DRILL, DEEPEN, OR PLUG BACK

1a. TYPE OF WORK

DRILL ☒DEEPEN ☐PLUG BACK ☐

b. TYPE OF WELL

OIL
WELL ☒GAS
WELL ☐

OTHER

SINGLE
ZONE ☒MULTIPLE
ZONE ☐

2. NAME OF OPERATOR

Murphy Oil Corporation

3. ADDRESS OF OPERATOR

200 Jefferson Avenue - El Dorado, Arkansas

4. LOCATION OF WELL (Report location clearly and in accordance with any State requirements.)*

At surface 1980' from North Line & 660' from East Line of Sec. 19-
T32N-R17W (SE/4 NE/4)

At proposed prod. zone

Same

14. DISTANCE IN MILES AND DIRECTION FROM NEAREST TOWN OR POST OFFICE*

15. DISTANCE FROM PROPOSED*

LOCATION TO NEAREST
PROPERTY OR LEASE LINE, FT.
(Also to nearest drlg. line, if any)18. DISTANCE FROM PROPOSED LOCATION*
TO NEAREST WELL, DRILLING COMPLETED,
OR APPLIED FOR, ON THIS LEASE, FT.

4950'

16. NO. OF ACRES IN LEASE

19. PROPOSED DEPTH

1530'

17. NO. OF ACRES ASSIGNED
TO THIS WELL

40

20. ROTARY OR CABLE TOOLS

Rotary

21. ELEVATIONS (Show whether DF, RT, GR, etc.)

5529' GR

22. APPROX. DATE WORK WILL START*

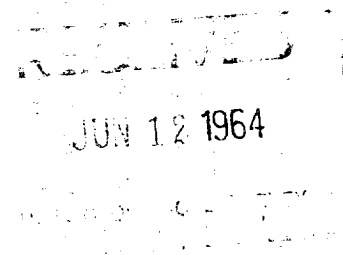
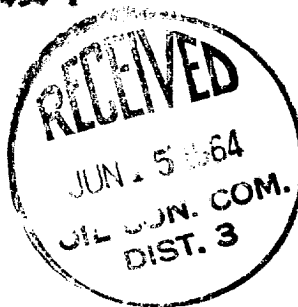
June 18, 1964

23.

PROPOSED CASING AND CEMENTING PROGRAM

SIZE OF HOLE	SIZE OF CASING	WEIGHT PER FOOT	SETTING DEPTH	QUANTITY OF CEMENT
9"	7"	20#	30'	Cement to surface
6 1/2"	4 1/2"	9.5#	1530	35 sacks

Plan to cut one 20' Core in Lower Gallup formation with air and/or oil, cement 4 1/2" casing with a sufficient amount of cement to cover approximately 250' above the producing zone, perforate with jet-notch gun, and fracture with 40,000# sand and 1900 bbls. oil. The estimated top of the Lower Gallup is 1454'.



IN ABOVE SPACE DESCRIBE PROPOSED PROGRAM: If proposal is to deepen or plug back, give data on present productive zone and proposed new productive zone. If proposal is to drill or deepen directionally, give pertinent data on subsurface locations and measured and true vertical depths. Give blowout preventer program, if any.

24.

SIGNED

L. L. Duncan

TITLE

Prod. Supt.-Direct Operations

DATE

6-9-64

(This space for Federal or State office use)

PERMIT NO.

APPROVAL DATE

APPROVED BY

TITLE

DATE

CONDITIONS OF APPROVAL, IF ANY:

Ok

*See Instructions On Reverse Side

NEW MEXICO OIL CONSERVATION COMMISSION

Well Location and Acreage Dedication Plat

Date June 11, 1964

Section A.

Operator MURPHY OIL CORPORATION Lease Navajo "AA"
 Well No. 15 Unit Letter H Section 19 Township 32 NORTH Range 17 WEST NMPM
 Located 1980 Feet From the NORTH Line, 660 Feet From the EAST Line
 County SAN JUAN G. L. Elevation 5529.0' Dedicated Acreage 40 Acres
 Name of Producing Formation Lower Gallup Pool

1. Is the Operator the only owner in the dedicated acreage outlined on the plat below?

Yes ☒ No ☐2. If the answer to question one is "no", have the interests of all the owners been consolidated by communitization agreement or otherwise? Yes ☐ No ☐ If answer is "yes", Type of Consolidation.

3. If the answer to question two is "no", list all the owners and their respective interests below:

Owner

Land Description



Section B.

This is to certify that the information in Section A above is true and complete to the best of my knowledge and belief.

Murphy Oil Corporation

(Operator)

L. L. Duncan

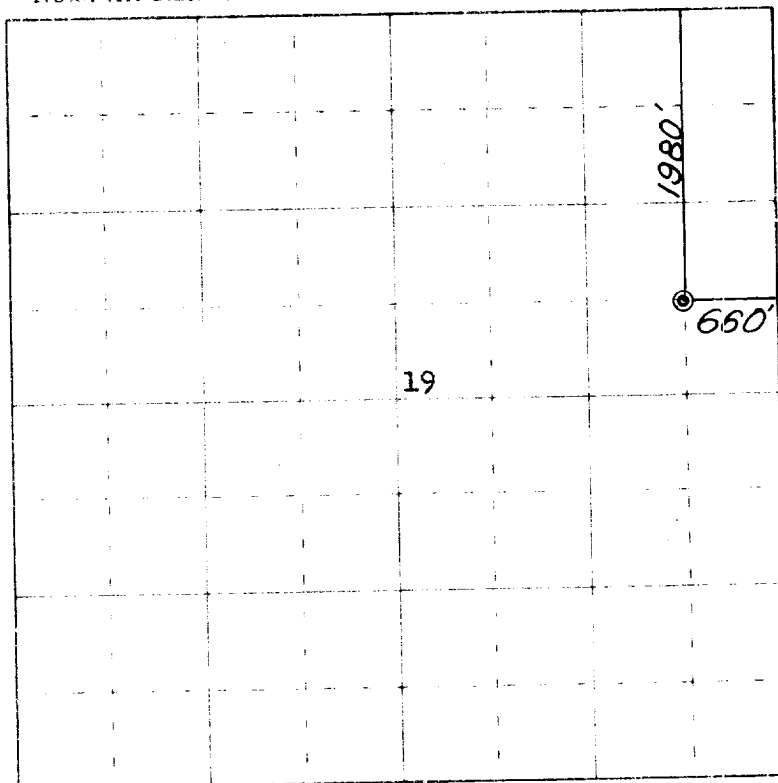
(Representative)

200 Jefferson Avenue

(Address)

El Dorado, Arkansas

Note: All distances must be from outer boundaries of section.



0 330 660 990 1320 1650 1980 2310 2640 2000 1500 1000 500 0

Scale 4 inches equal 1 mile

This is to certify that the above plat was prepared from field notes of actual surveys made by me or under my supervision and that the same are true and correct to the best of my knowledge and belief.

Date Surveyed June 4, 1964

James P. Leese
 Registered Professional Engineer and/or Land Surveyor
 James P. Leese, N. Mex. Reg. No. 1463
 Geo. Eng. Engineering Company