

*Will  
Cards & Label*

SUBMIT IN TRIPLICATE\*  
(Other instructions on  
reverse side)

Form approved.  
Budget Bureau No. 42-B1425.

UNITED STATES  
DEPARTMENT OF THE INTERIOR  
GEOLOGICAL SURVEY

APPLICATION FOR PERMIT TO DRILL, DEEPEN, OR PLUG BACK

1a. TYPE OF WORK  
DRILL ☒ DEEPEN ☐ PLUG BACK ☐

b. TYPE OF WELL  
OIL WELL ☐ GAS WELL ☒ OTHER ☐ SINGLE ZONE ☐ MULTIPLE ZONE ☐

2. NAME OF OPERATOR  
Tenneco Oil Company

3. ADDRESS OF OPERATOR  
P. O. Box 1714, Durango, Colorado 81301

4. LOCATION OF WELL (Report location clearly and in accordance with any State requirements.)\*  
At surface 820' FSL 1105' FEL  
At proposed prod. zone Unit Letter "P"

14. DISTANCE IN MILES AND DIRECTION FROM NEAREST TOWN OR POST OFFICE\*

15. DISTANCE FROM PROPOSED\*  
LOCATION TO NEAREST  
PROPERTY OR LEASE LINE, FT.  
(Also to nearest drig. unit line, if any)

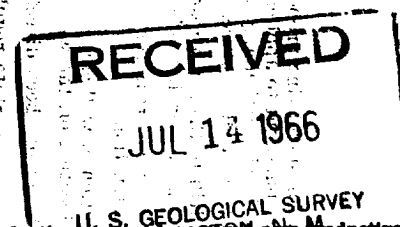
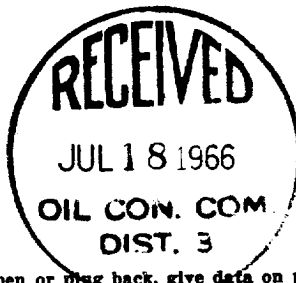
18. DISTANCE FROM PROPOSED LOCATION\*  
TO NEAREST WELL, DRILLING, COMPLETED,  
OR APPLIED FOR, ON THIS LEASE, FT.

21. ELEVATIONS (Show whether DF, RT, GR, etc.)  
6246 GR

23. PROPOSED CASING AND CEMENTING PROGRAM

SIZE OF HOLE	SIZE OF CASING	WEIGHT PER FOOT	SETTING DEPTH	QUANTITY OF CEMENT
15"	10-3/4	32#	250	Cement to surface
9-7/8"	7-5/8	26.4#	3150	Cement to surface
6-3/4"	4-1/2	11.6# & 10.5#	7535	1st stage 235 sx 2nd stage cement to surface.

We propose to rig up drill to aprx. TD 7535. Run GR injection and GR Density logs. Cement above casing w/stage collar set aprx. 300' below bottom of Mesaverde. Perforate, frac, and complete as a single Basin Dakota well. Conduct deliverability tests.



IN ABOVE SPACE DESCRIBE PROPOSED PROGRAM: If proposal is to deepen or plug back, give data on present productive zone and proposed new productive zone. If proposal is to drill or deepen directionally, give pertinent data on subsurface locations and measured and true vertical depths. Give blowout preventer program, if any.

24. SIGNED Harold C. Nichols TITLE Senior Production Clerk DATE July 12, 1966

(This space for Federal or State office use)

PERMIT NO. \_\_\_\_\_ APPROVAL DATE \_\_\_\_\_

APPROVED BY EN TITLE \_\_\_\_\_

CONDITIONS OF APPROVAL, IF ANY:

5 USGS, Frmg., 1 Cont., 1 TOC File

\*See Instructions On Reverse Side

**NEW MEXICO OIL CONSERVATION COMMISSION  
WELL LOCATION AND ACERAGE DEDICATION PLAT**

All distances must be from the outer boundaries of the Section

Operator <b>TENNECO OIL COMPANY</b>			Lease <b>MOORE "C"</b>		Well No. <b>1</b>
Unit Letter <b>P</b>	Section <b>27</b>	Township <b>32 North</b>	Range <b>12 West</b>	County <b>San Juan</b>	
Actual Footage Location of Well: <div style="display: flex; justify-content: space-between;"> <span><b>820</b> feet from the <b>South</b> line and</span> <span><b>1105</b> feet from the <b>East</b> line</span> </div>					
Ground Level Elev. <b>6246' ungraded</b>	Producing Formation <b>Basin Dakota</b>	Pool <b>Basin Dakota</b>	Dedicated Acreage: <b>E/2</b> <b>320</b> Acres		

1. Outline the acreage dedicated to the subject well by colored pencil or hatchure marks on the plat below.
2. If more than one lease is dedicated to the well, outline each and identify the ownership thereof (both as to working interest and royalty),
3. If more than one lease of different ownership is dedicated to the well, have the interests of all owners been consolidated by communitization, unitization, force-pooling, etc?

( ) Yes ( ) No If answer is "yes," type of consolidation .....

If answer is "no," list the owners and tract descriptions which have actually consolidated. (Use reverse side of this form if necessary.) .....

No allowable will be assigned to the well until all interests have been consolidated (by communitization, unitization, forced-pooling, or otherwise) or until a non standard unit, eliminating such interests, has been approved by the Commission.

**CERTIFICATION**

I hereby certify that the information contained herein is true and complete to the best of my knowledge and belief.

*Harold C. Nichols*  
 Name Harold C. Nichols  
 Position Senior Production Clerk  
Tenneco Oil Company  
 Date July 12, 1966

**RECEIVED**  
**JUL 18 1966**

I hereby certify that the well location shown on this plat was plotted from field notes of actual surveys made by me or under my supervision, and that the same is true and correct to the best of my knowledge and belief.

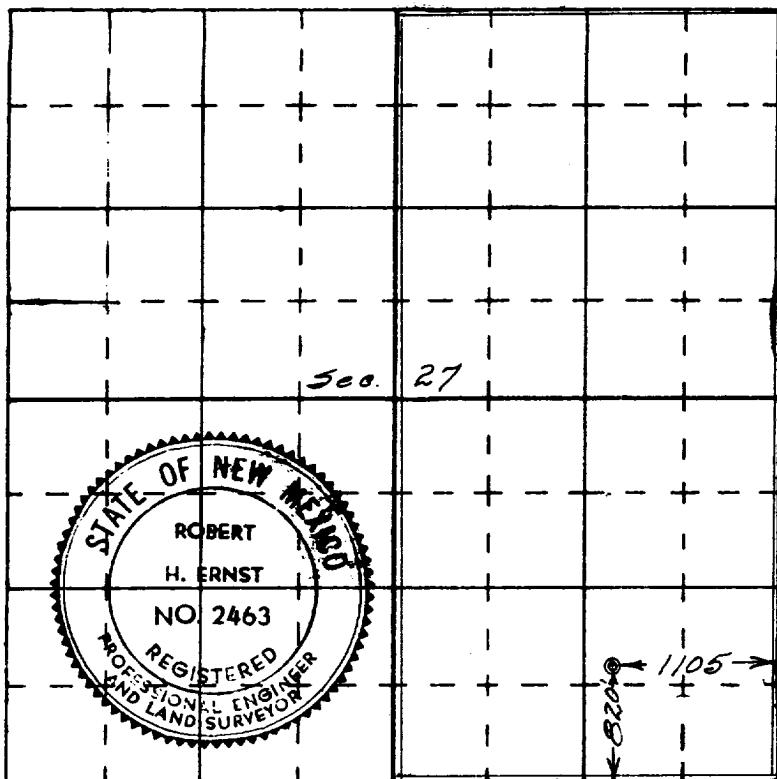
**29 June 1966**

Date Surveyed

*Robert H. Ernst*  
 Registered Professional Engineer  
 and/or Land Surveyor

**Robert H. Ernst**  
**N. Mex. PE & LS 2463**

Certificate No. \_\_\_\_\_



**ERNST ENGINEERING CO.**  
**DURANGO, COLORADO**