

UNITED STATES
DEPARTMENT OF THE INTERIOR
GEOLOGICAL SURVEY

APPLICATION FOR PERMIT TO DRILL, DEEPEN, OR PLUG BACK

1a. TYPE OF WORK

DRILL ☒DEEPEN ☐PLUG BACK ☐

b. TYPE OF WELL

OIL
WELL ☐GAS
WELL ☒

OTHER

SINGLE
ZONE ☒MULTIPLE
ZONE ☐

2. NAME OF OPERATOR

Tenneco Oil Company

3. ADDRESS OF OPERATOR

P. O. Box 1714, Durango, Colorado 81301

4. LOCATION OF WELL (Report location clearly and in accordance with any State requirements.)

At surface

1650' ESL 1650' FWL

At proposed prod. zone

FNL

Unit Letter "F"

14. DISTANCE IN MILES AND DIRECTION FROM NEAREST TOWN OR POST OFFICE*

16. DISTANCE FROM PROPOSED*

LOCATION TO NEAREST
PROPERTY OR LEASE LINE, FT.
(Also to nearest drig. unit line, if any)18. DISTANCE FROM PROPOSED LOCATION*
TO NEAREST WELL, DRILLING, COMPLETED,
OR APPLIED FOR, ON THIS LEASE, FT.

16. NO. OF ACRES IN LEASE

320

19. PROPOSED DEPTH

7760

17. NO. OF ACRES ASSIGNED
TO THIS WELL

320 W/2

20. ROTARY OR CABLE TOOLS

Rotary

21. ELEVATIONS (Show whether DF, RT, GR, etc.)

6504 GR

22. APPROX. DATE WORK WILL START*

September 30

23. PROPOSED CASING AND CEMENTING PROGRAM

SIZE OF HOLE	SIZE OF CASING	WEIGHT PER FOOT	SETTING DEPTH	QUANTITY OF CEMENT
15"	10-3/4"	32#	250	Cement to surface
9-7/8"	7-5/8"	26.4#	3150	Cement to surface
6-3/4"	4-1/2"	11.6 & 10.5#	7760	1st stage 150 sx 2nd stage 150 sx.

We plan to drill to approximate T.D. 7760'. Run IES & GRD logs. Run casing as shown above w/stage collar set approximately 300' below bottom of Mesaverde WOC. Perf & Frac and complete as single gas well. Run 2-3/8" tubing (BUE) and conduct deliverability tests.

RECEIVED

SEP 30 1966

OIL CON. COM.

U.S. GEOLOGICAL SURVEY
FARMINGTON, N.M.

IN ABOVE SPACE DESCRIBE PROPOSED PROGRAM: If proposal is to deepen or plug back, give data on present productive zone and proposed new productive zone. If proposal is to drill or deepen directionally, give pertinent data on subsurface locations and measured and true vertical depths. Give blowout preventer program, if any.

24.

SIGNED

Harold C. Nichols

TITLE

Senior Production Clerk

DATE

Sept. 28, 1966

(This space for Federal or State office use)

PERMIT NO.

APPROVAL DATE

APPROVED BY

TITLE

CONDITIONS OF APPROVAL, IF ANY:

5 USGS Frmg., 1 Cont., Durango, 1 Aztec Oil and Gas.

See Instructions On Reverse Side

**NEW MEXICO OIL CONSERVATION COMMISSION
WELL LOCATION AND ACERAGE DEDICATION PLAT**

All distances must be from the outer boundaries of the Section

Operator TENNECO OIL COMPANY		Lease MOORE COM.		Well No. 1
Unit Letter F	Section 25	Township 32 North	Range 12 West	County San Juan
Actual Footage Location of Well: <div style="display: flex; justify-content: space-between;"> 1650 feet from the North 1650 feet from the West </div>				
Ground Level Elev. 504 ungraded		Producing Formation Basin Dakota		Dedicated Acreage: W/2 320 Acres

- Outline the acreage dedicated to the subject well by colored pencil or hatchure marks on the plat below.
- If more than one lease is dedicated to the well, outline each and identify the ownership thereof (both as to working interest and royalty).
- If more than one lease of different ownership is dedicated to the well, have the interests of all owners been consolidated by communitization, unitization, force-pooling, etc?

☒ Yes ☐ No If answer is "yes," type of consolidation: Communitization

If answer is "no," list the owners and tract descriptions which have actually consolidated. (Use reverse side of this form if necessary.)

No allowable will be assigned to the well until all interests have been consolidated (by communitization, unitization, forced-pooling, or otherwise) or until a non standard unit, eliminating such interests, has been approved by the Commission.

RECEIVED

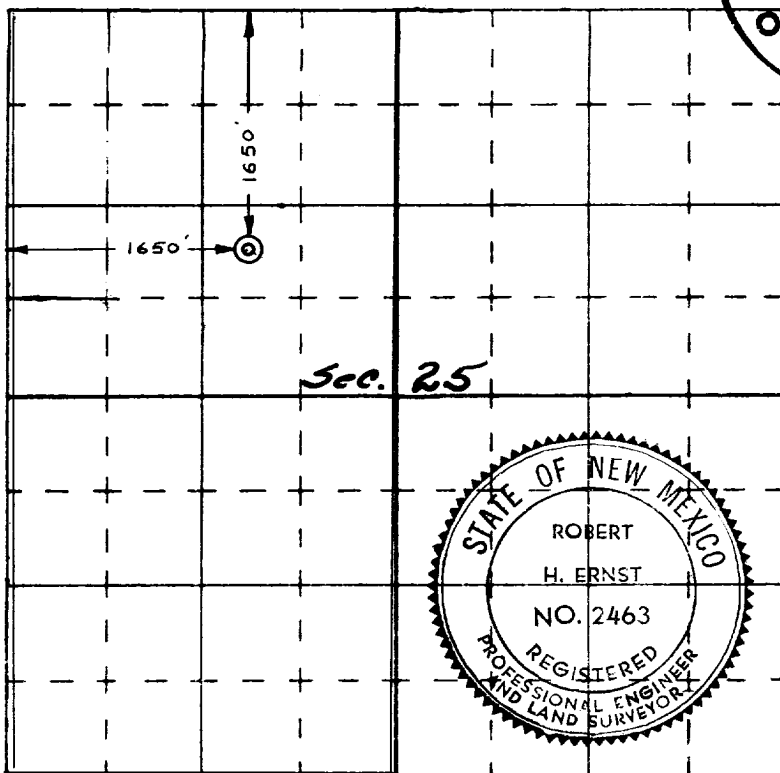
SEP 30 1966

**OIL CON. COM.
DIST. 3**

CERTIFICATION

I hereby certify that the information contained herein is true and complete to the best of my knowledge and belief.

Name Harold C. Nichols
Senior Production Clerk
 Position _____
 Company Tenneco Oil Company
 Date September 28, 1966



I hereby certify that the well location shown on this plat was plotted from field notes of actual surveys made by me or under my supervision, and that the same is true and correct to the best of my knowledge and belief.

20 September 1966

Date Surveyed _____
Robert H. Ernst
 Registered Professional Engineer
 and/or Land Surveyor
Robert H. Ernst
 N. Mex. PERLS No. 2463

Certificate No. _____