

Cards + Label

NO. OF COPIES RECEIVED	5
DISTRIBUTION	
SANTA FE	1
FILE	1
U.S.G.S.	2
LAND OFFICE	
OPERATOR	1

# NEW MEXICO OIL CONSERVATION COMMISSION

Form C-101  
Revised 1-1-65

5A. Indicate Type of Lease	
STATE <input type="checkbox"/>	FEE <input checked="" type="checkbox"/>
5. State Oil & Gas Lease No.	

## APPLICATION FOR PERMIT TO DRILL, DEEPEN, OR PLUG BACK

1a. Type of Work		7. Unit Agreement Name	
b. Type of Well OIL WELL <input type="checkbox"/> GAS WELL <input checked="" type="checkbox"/> OTHER <input type="checkbox"/>		8. Farm or Lease Name Hubbard Com.	
2. Name of Operator Tenneco Oil Company		9. Well No. #1	
3. Address of Operator P. O. Box 1714, Durango, Colorado 81301		10. Field and Pool, or Wildcat Basin Dakota	
4. Location of Well UNIT LETTER I LOCATED 1650 FEET FROM THE South LINE AND 990 FEET FROM THE East LINE OF SEC. 25 TWP. 32N RGE. 12W NMPM		12. County San Juan	
19. Proposed Depth 7600		19A. Formation Dakota	
20. Rotary or C.T. Rotary		21. Elevations (Show whether DF, RT, etc.) 6378 GR	
21A. Kind & Status Plug. Bond		21B. Drilling Contractor	
22. Approx. Date Work will start September 12, 1966			

23.

### PROPOSED CASING AND CEMENT PROGRAM

E/2 320 acres.

SIZE OF HOLE	SIZE OF CASING	WEIGHT PER FOOT	SETTING DEPTH	SACKS OF CEMENT	EST. TOP
15"	10-3/4"	32#	250	Cement to surface	
9-7/8"	7-5/8"	26.4#	3150	Cement to surface	
6-3/4"	4-1/2"	10.5# & 11.6#	7600	2nd stage cement to surface 1st stage 235 sx.	

We plan to drill to approximate T.D. 7600. Run IES & GRD logs, set casing as shown above w/ stage collar set approximately 300' below bottom of Mesaverde. WOC. Perf and frac and complete as a single Basin Dakota. Run 2-3/8" EUE tubing and conduct deliverability tests.

APPROVAL VALID  
FOR 90 DAYS UNLESS  
DRILLING COMMENCED,

EXPIRES 12-12-66



IN ABOVE SPACE DESCRIBE PROPOSED PROGRAM: IF PROPOSAL IS TO DEEPEN OR PLUG BACK, GIVE DATA ON PRESENT PRODUCTIVE ZONE AND PROPOSED NEW PRODUCTIVE ZONE. GIVE BLOWOUT PREVENTER PROGRAM, IF ANY.

I hereby certify that the information above is true and complete to the best of my knowledge and belief.

Signed Harold C. Nichols Title Senior Production Clerk Date September 9, 1966

(This space for State Use)

APPROVED BY Ernest Arnold TITLE Sup Dist DATE 9-12-66

CONDITIONS OF APPROVAL, IF ANY:

5 USGS, Frang., 1 Aztec O&G, 1 Cont., 1 TOC File

**NEW MEXICO OIL CONSERVATION COMMISSION  
WELL LOCATION AND ACERAGE DEDICATION PLAT**

All distances must be from the outer boundaries of the Section

Operator <b>TENNECO OIL COMPANY</b>		Lease <b>HUBBARD COM.</b>		Well No <b>1</b>
Unit Letter <b>I</b>	Section <b>25</b>	Township <b>32 North</b>	Range <b>12 West</b>	County <b>San Juan</b>
Actual Footage Location of Well: <b>1650</b> feet from the <b>South</b> line and <b>990</b> feet from the <b>East</b> line Ground Level Elev. _____ Producing Formation <b>Basin Dakota</b> For _____ Dedicated Acreage: <b>E/2 320</b> Acres				

1. Outline the acreage dedicated to the subject well by colored pencil or hatchure marks on the plat below.
2. If more than one lease is dedicated to the well, outline each and identify the ownership thereof both as to working interest and royalty.
3. If more than one lease of different ownership is dedicated to the well, have the interests of all owners been consolidated by communitization, unitization, force-pooling, etc?  
☐ Yes    ☐ No    If answer is "yes," type of consolidation: \_\_\_\_\_

If answer is "no," list the owners and tract descriptions which have actually consolidated. (Use reverse side of this form if necessary.) \_\_\_\_\_

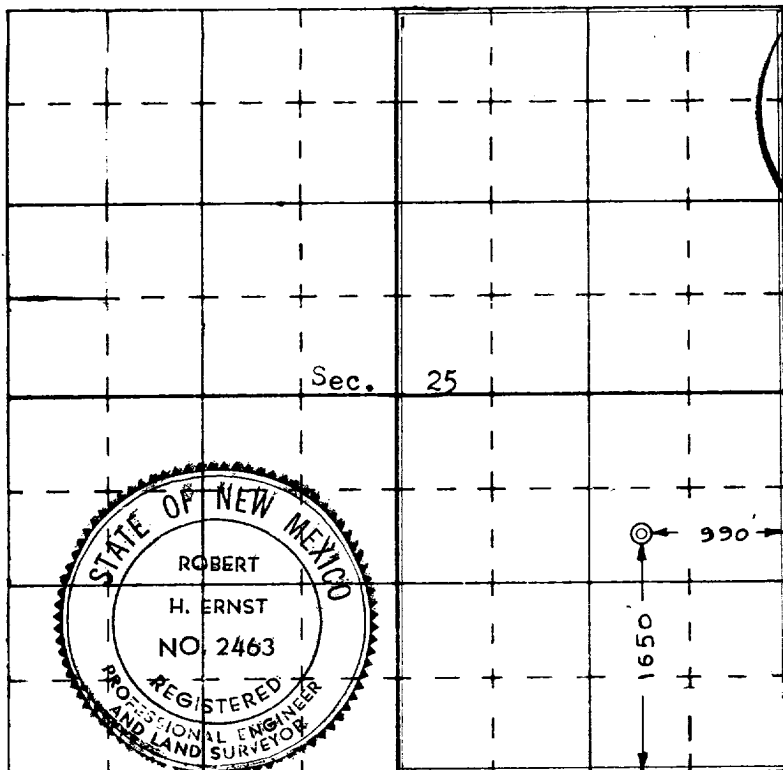
No allowable will be assigned to the well until all interests have been consolidated (by communitization, unitization, forced-pooling, or otherwise) or until a non standard unit, eliminating such interests, has been approved by the Commission.

**CERTIFICATION**

I hereby certify that the information contained herein is true and complete to the best of my knowledge and belief.



Name **Harold C. Nichols**  
 Position **Senior Production Clerk**  
 Company **Tenneco Oil Company**  
 Date **September 9, 1966**



I hereby certify that the well location shown on this plat was plotted from field notes of actual surveys made by me or under my supervision, and that the same is true and correct to the best of my knowledge and belief.

**7 September 1966**  
 Date Surveyed \_\_\_\_\_  
*Robert H. Ernst*  
 Registered Professional Engineer  
 and/or Land Surveyor  
**Robert H. Ernst**  
 N. Mex. Reg. No. **49 2463**  
 Certificate No. \_\_\_\_\_