

UNITED STATES
DEPARTMENT OF THE INTERIOR
GEOLOGICAL SURVEY

30-045-21846

APPLICATION FOR PERMIT TO DRILL, DEEPEN, OR PLUG BACK

1a. TYPE OF WORK

DRILL ☒

DEEPEN ☐

PLUG BACK ☐

b. TYPE OF WELL

OIL WELL ☐

GAS WELL ☐

OTHER

SINGLE ZONE ☐

MULTIPLE ZONE ☐

2. NAME OF OPERATOR

Kimbark Operating Company

3. ADDRESS OF OPERATOR

1860 Lincoln Street #808, Denver, Colorado 80203

4. LOCATION OF WELL (Report location clearly and in accordance with any State requirements.)*

At surface

SW NW 805' FWL - 1750' FNL

At proposed prod. zone

1760'

14. DISTANCE IN MILES AND DIRECTION FROM NEAREST TOWN OR POST OFFICE*

15. DISTANCE FROM PROPOSED*

LOCATION TO NEAREST PROPERTY OR LEASE LINE, FT.
(Also to nearest drlg. unit line, if any)

16. NO. OF ACRES IN LEASE

160

17. NO. OF ACRES ASSIGNED TO THIS WELL

160

18. DISTANCE FROM PROPOSED LOCATION* TO NEAREST WELL, DRILLING, COMPLETED, OR APPLIED FOR, ON THIS LEASE, FT.

19. PROPOSED DEPTH

P.C. - 3300'

20. ROTARY OR CABLE TOOLS

Rotary

21. ELEVATIONS (Show whether DF, RT, GR, etc.)

22. APPROX. DATE WORK WILL START*

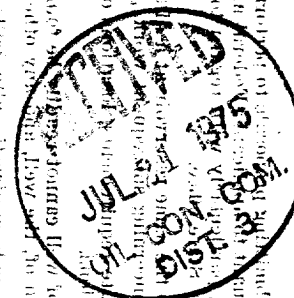
August 1, 1975

23. PROPOSED CASING AND CEMENTING PROGRAM.

SIZE OF HOLE	SIZE OF CASING	WEIGHT PER FOOT	SETTING DEPTH	QUANTITY OF CEMENT
12 1/2"	8 5/8"	24	200'	Circ.
7 7/8"	4 1/2"	10.5	T.D.	250 Stage 400

- Operator will test and maintain proper drilling equipment during all operations.

JUL 18 1975
U. S. GEOLOGICAL SURVEY



IN ABOVE SPACE DESCRIBE PROPOSED PROGRAM: If proposal is to deepen or plug back, give data on present productive zone and proposed new productive zone. If proposal is to drill or deepen directionally, give pertinent data on subsurface locations and measured and true vertical depths. Give blowout preventer program, if any.

24.

SIGNED

Walter K. Arbuckle

TITLE

President

DATE

July 16, 1975

(This space for Federal or State office use)

PERMIT NO.

APPROVAL DATE

APPROVED BY

TITLE

DATE

CONDITIONS OF APPROVAL, IF ANY:

**NEW MEXICO OIL CONSERVATION COMMISSION
WELL LOCATION AND ACERAGE DEDICATION PLAT**

All distances must be from the outer boundaries of the Section

Operator KIMBARK OPERATING COMPANY			Lease HORTON		Well No. 8
Unit Letter E	Section 13	Township 32 NORTH	Range 12 WEST	County SAN JUAN	
Actual-Footage Location of Well: 1760 feet from the NORTH line and 805 feet from the WEST line					
Ground Level Elev. 6334	Producing Formation Pictured Ch. FFs		Pool Blanco ext	Dedicated Acreage: 160 Acres	

1. Outline the acreage dedicated to the subject well by colored pencil or hatchure marks on the plat below.
2. If more than one lease is dedicated to the well, outline each and identify the ownership thereof (both as to working interest and royalty),
3. If more than one lease of different ownership is dedicated to the well, have the interests of all owners been consolidated by communitization, unitization, force-pooling, etc?
 () Yes () No If answer is "yes," type of consolidation _____

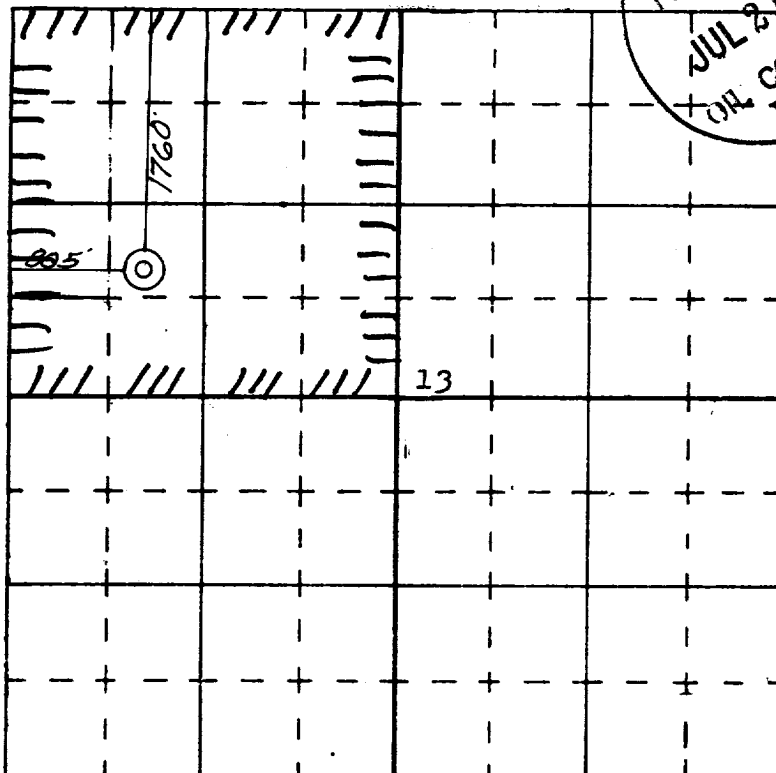
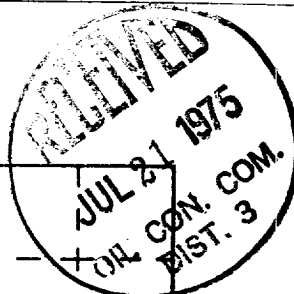
If answer is "no," list the owners and tract descriptions which have actually consolidated (Use reverse side of this form if necessary.) _____

No allowable will be assigned to the well until all interests have been consolidated (by communitization, unitization, forced-pooling, or otherwise) or until a non standard unit, eliminating such interests, has been approved by the Commission.

RECEIVED

JUL 18 1975

U. S. GEOLOGICAL SURVEY



CERTIFICATION

I hereby certify that the information contained herein is true and complete to the best of my knowledge and belief.

Walter K. Arbuckle
 Name Walter K. Arbuckle
 Position President
 Company Kimbark Operating Co.
 Date 7/16/75

I hereby certify that the well location shown on this plat was plotted from field notes of actual surveys made by me or under my supervision and that the same is true and correct to the best of my knowledge and belief.

James P. Leese
 Date Surveyed 9 July 1975
 Registered Professional Engineer and/or Land Surveyor **James P. Leese**

1463

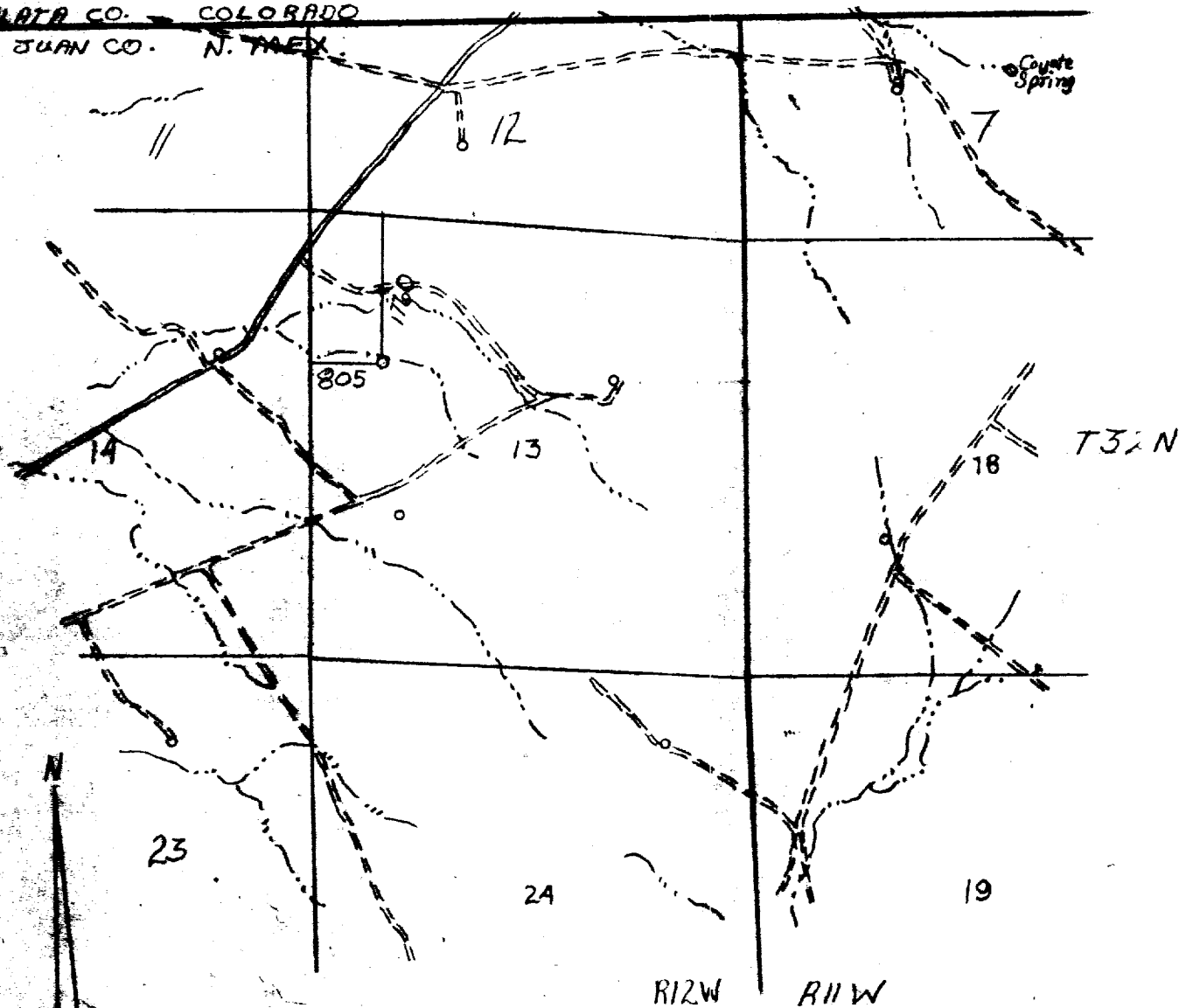
Certificate No.

RECEIVED

JUL 18 1975

U. S. GEOLOGICAL SURVEY
FARMINGTON, N. M.

LA PLATA CO. COLORADO
SAN JUAN CO. N. MEX.



Vicinity map for
Kimbark Operating Co.
Well location in the
SW 1/4 NW 4 Sec. 13
T32N, R12W, N.M.P.M.
San Juan County, N.M.

Scale: 1" = 2000' Date: 9 Jul 1975

San Juan Engineering Co.

1" = 2000'