

UNITED STATES
DEPARTMENT OF THE INTERIOR
GEOLOGICAL SURVEY

APPLICATION FOR PERMIT TO DRILL, DEEPEN, OR PLUG BACK

1a. TYPE OF WORK

DRILL ☒

DEEPEN ☐

PLUG BACK ☐

b. TYPE OF WELL

OIL
WELL ☐

GAS
WELL ☒

OTHER

SINGLE
ZONE ☒

MULTIPLE
ZONE ☐

2. NAME OF OPERATOR

Kimbark Operating Company

3. ADDRESS OF OPERATOR

1860 Lincoln Street, Suite 808, Denver, Colorado 80203

4. LOCATION OF WELL (Report location clearly and in accordance with any State requirements.)*

At surface

920' FSL, 1035' FEL

At proposed prod. zone

14. DISTANCE IN MILES AND DIRECTION FROM NEAREST TOWN OR POST OFFICE*

15. DISTANCE FROM PROPOSED*

LOCATION TO NEAREST
PROPERTY OR LEASE LINE, FT.
(Also to nearest drlg. unit line, if any)

920'

16. NO. OF ACRES IN LEASE

160

17. NO. OF ACRES ASSIGNED

TO THIS WELL

320

18. DISTANCE FROM PROPOSED LOCATION*

TO NEAREST WELL, DRILLING, COMPLETED,
OR APPLIED FOR, ON THIS LEASE, FT.

90' from
Mainline

19. PROPOSED DEPTH

Mesaverde 5500'

20. ROTARY OR CABLE TOOLS

ROTARY

21. ELEVATIONS (Show whether DF, RT, GR, etc.)

5988' G.R.

22. APPROX. DATE WORK WILL START*

December 28, 1975

23.

PROPOSED CASING AND CEMENTING PROGRAM

SIZE OF HOLE	SIZE OF CASING	WEIGHT PER FOOT	SETTING DEPTH	QUANTITY OF CEMENT
7 1/2" 13 3/4	10 3/4" 9 5/8	40# 36'	140' 140	Circ.
9 1/8" 8 3/4	7 5/8" 7	26# 20	4500' 3000	300 SX
6 3/4" 6 1/4	5 1/2" 4 1/2	45.5# 10.1	5500' 5350	400 SX

1. Operator will test and maintain proper drilling equipment during all operations.

RECEIVED

DEC 22 1975

U. S. GEOLOGICAL SURVEY
CARMINGTON, N. M.

RECEIVED

DEC 23 1975

OIL CON. COM.
DIST 3

IN ABOVE SPACE DESCRIBE PROPOSED PROGRAM: If proposal is to deepen or plug back, give data on present productive zone and proposed new productive zone. If proposal is to drill or deepen directionally, give pertinent data on subsurface locations and measured and true vertical depths. Give blowout preventer program, if any.

24.

SIGNED

Walter K. Arbuckle

TITLE

President

DATE

December 17, 1975

(This space for Federal or State office use)

PERMIT NO.

APPROVAL DATE

APPROVED BY

TITLE

DATE

CONDITIONS OF APPROVAL, IF ANY:

OK

*See Instructions On Reverse Side

**NEW MEXICO OIL CONSERVATION COMMISSION
WELL LOCATION AND ACREAGE DEDICATION PLAT**

Form C-102
Supersedes C-128
Effective 1-1-65

All distances must be from the outer boundaries of the Section.

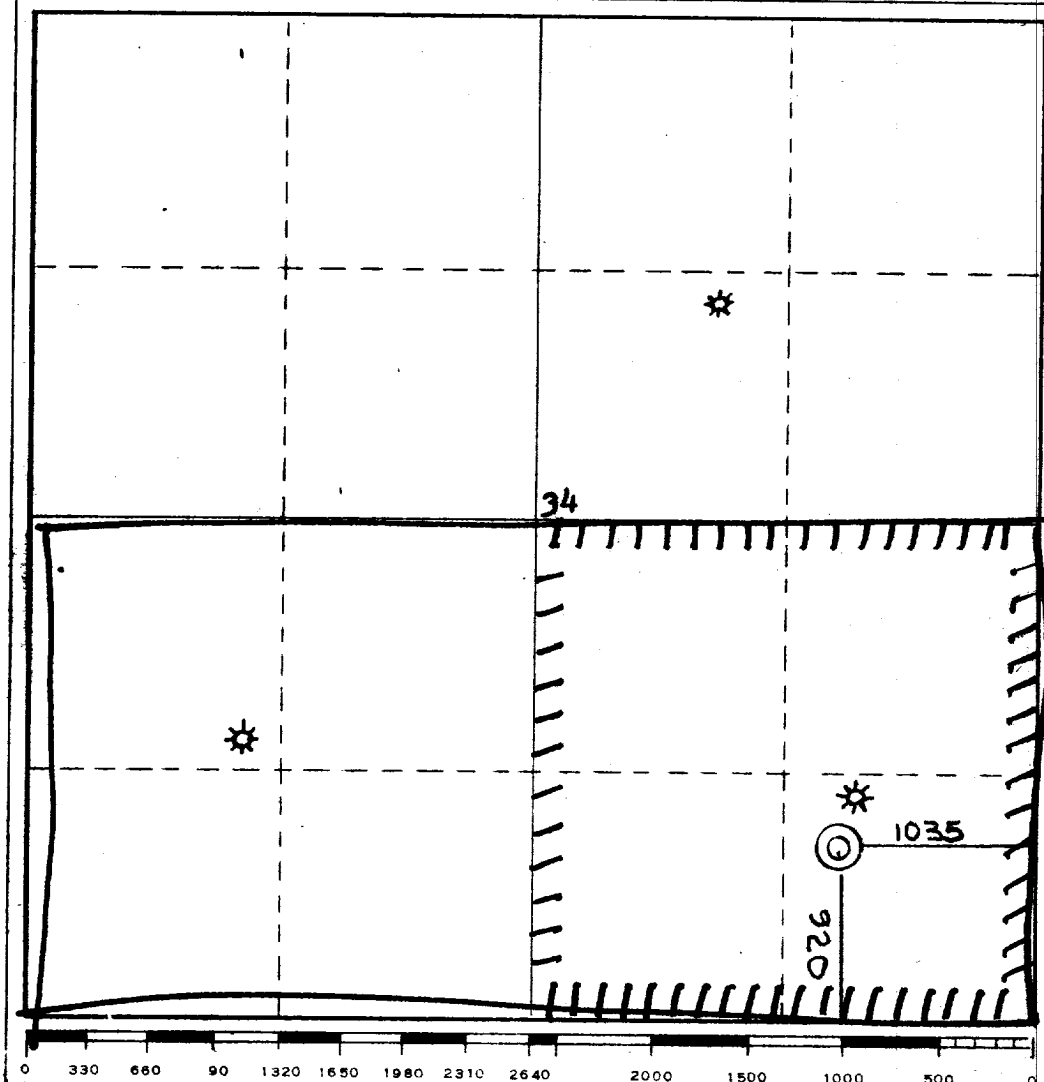
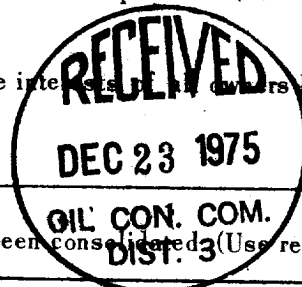
Operator KIMBARK OPERATING COMPANY			Lease STOREY		Well No. 21A
Unit Letter P	Section 34	Township 32 NORTH	Range 11 WEST	County SAN JUAN	
Actual Footage Location of Well: 920 feet from the SOUTH line and 1035 feet from the EAST line					
Ground Level Elev. 5988	Producing Formation MESA VERDE		Pool <i>Blanco Mr.</i>	Dedicated Acreage: 320	Acres

1. Outline the acreage dedicated to the subject well by colored pencil or hachure marks on the plat below.
2. If more than one lease is dedicated to the well, outline each and identify the ownership thereof (both as to working interest and royalty).
3. If more than one lease of different ownership is dedicated to the well, have the interests of all owners been consolidated by communitization, unitization, force-pooling, etc?

☐ Yes ☐ No If answer is "yes," type of consolidation _____

If answer is "no," list the owners and tract descriptions which have actually been consolidated (Use reverse side of this form if necessary.) _____

No allowable will be assigned to the well until all interests have been consolidated (by communitization, unitization, forced-pooling, or otherwise) or until a non-standard unit, eliminating such interests, has been approved by the Commission.



CERTIFICATION

I hereby certify that the information contained herein is true and complete to the best of my knowledge and belief.

Walter K. Arbuckle

Name
Walter K. Arbuckle

Position
President

Company
Kimbark Operating Co.

Date
12/17/75

I hereby certify that the well location shown on this plat was plotted from field notes of actual surveys made by me or under my supervision, and that the same is true and correct to the best of my knowledge and belief.

Date Surveyed
9 December 1975

Registered Professional Engineer and/or Land Surveyor
James P. Leese
James P. Leese

Certificate No. **1463**