

DEVELOPMENT PLAN
 UTE INDIANS "A" NO. 11
 790' FSL & 1480' FEL, SECTION 26, T-32-N, R-14-W
 SAN JUAN COUNTY, NEW MEXICO

The location is rocky and covered with cedar trees. The geologic name of the surface formation is Cretaceous Menefee. A jeep road will be improved 8/10ths of a mile. Archeological clearance for the location was recommended by Mrs. Suzanne Dehoff.

Arrangements are being made to haul water from a private water well approximately 5 miles. Drilling fluid to 600' will be water and natural gel. Low solids non-dispersed mud will be used from 600' to TD. Upon completion the location will be cleaned up, with drainage ditches on upper side, and reseeded. Water and mud will be hauled from the reserve pit and graded into roads. The reserve pit will be leveled and reseeded. Seeding will be in accordance with instructions from the BIA.

There are no airstrips or camps in the vicinity.

The estimated tops of important geological formations are:

<u>FORMATION</u>	<u>DEPTH</u>	<u>ELEVATION</u>
Dakota	3200'	+3697'
Morrison	3480'	+3417'
Upper Hermosa	7432'	- 535'
Paradox	8362'	-1465'
Barker Creek	9062'	-2165'
Molas	9262'	-2365'
TD	9462'	-2565'

Estimated KB elevation: 6897'

The casing and cementing program is:

<u>EST. DEPTH</u>	<u>CSG. SIZE</u>	<u>HOLE SIZE</u>	<u>SACKS CEMENT - TYPE</u>
600'	8-5/8"	12-1/4"	500 - Class "B" 2% CaCl ₂
9462'	5-1/2"	7-7/8"	600 - Class "B" 50:50 Poz & 100 - Class "B" Neat (1st Stage) 550 - Class "B" 50:50 Poz & 100 - Class "B" Neat (2nd Stage)

Stage collar to be set 200' below base of Dakota.

Amoco's standard blowout preventer design will be used as shown on the attachment.

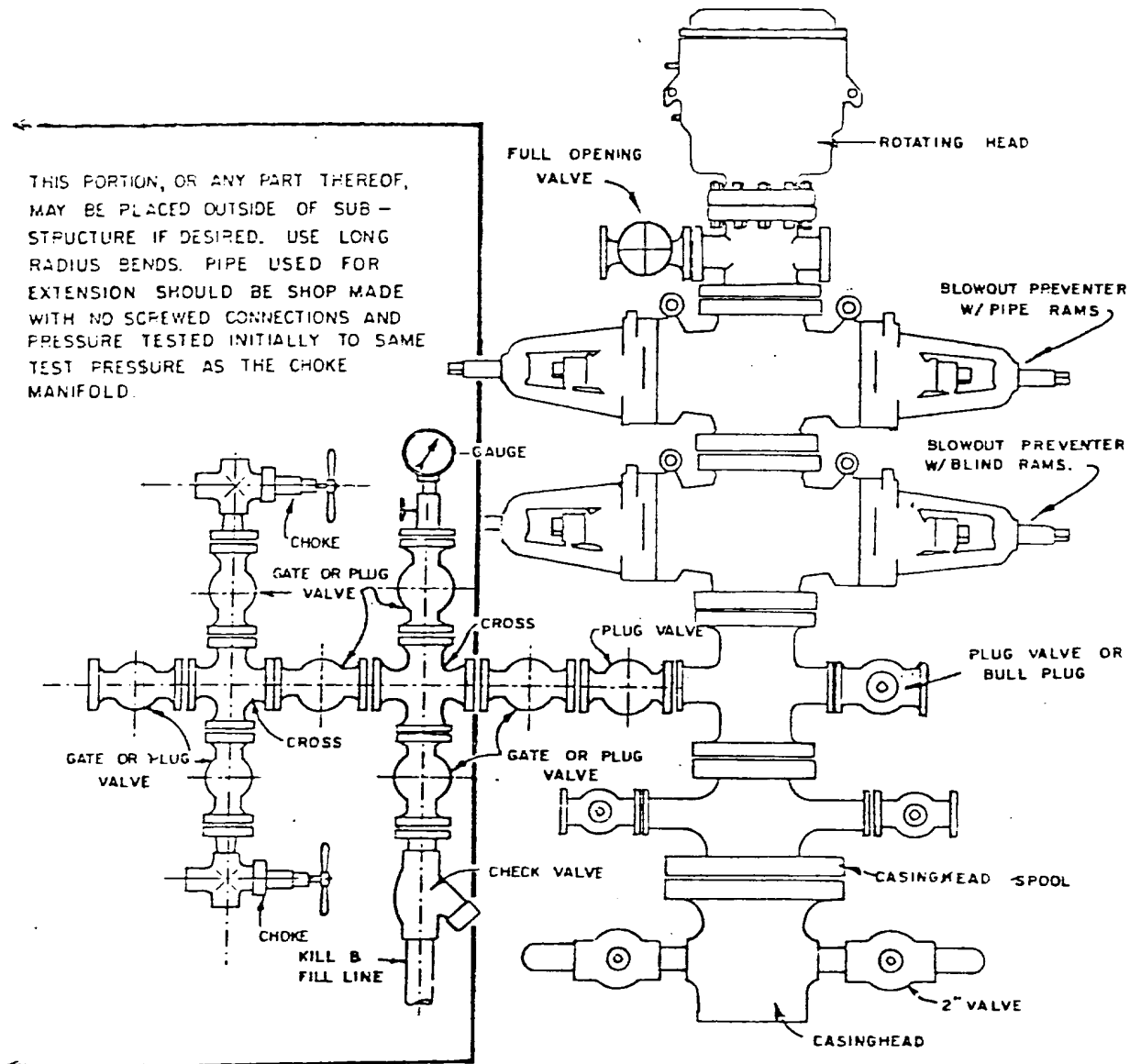
The logging program will be: At Top Morrison: IES Surface casing - Top Morrison; Neutrendensity 2000' - Top Morrison.
 At Final TD : IES Top Morrison - TD Neutrendensity 7000' - TD.

A drill stem test will be run in the Paradox. No cores will be cut.

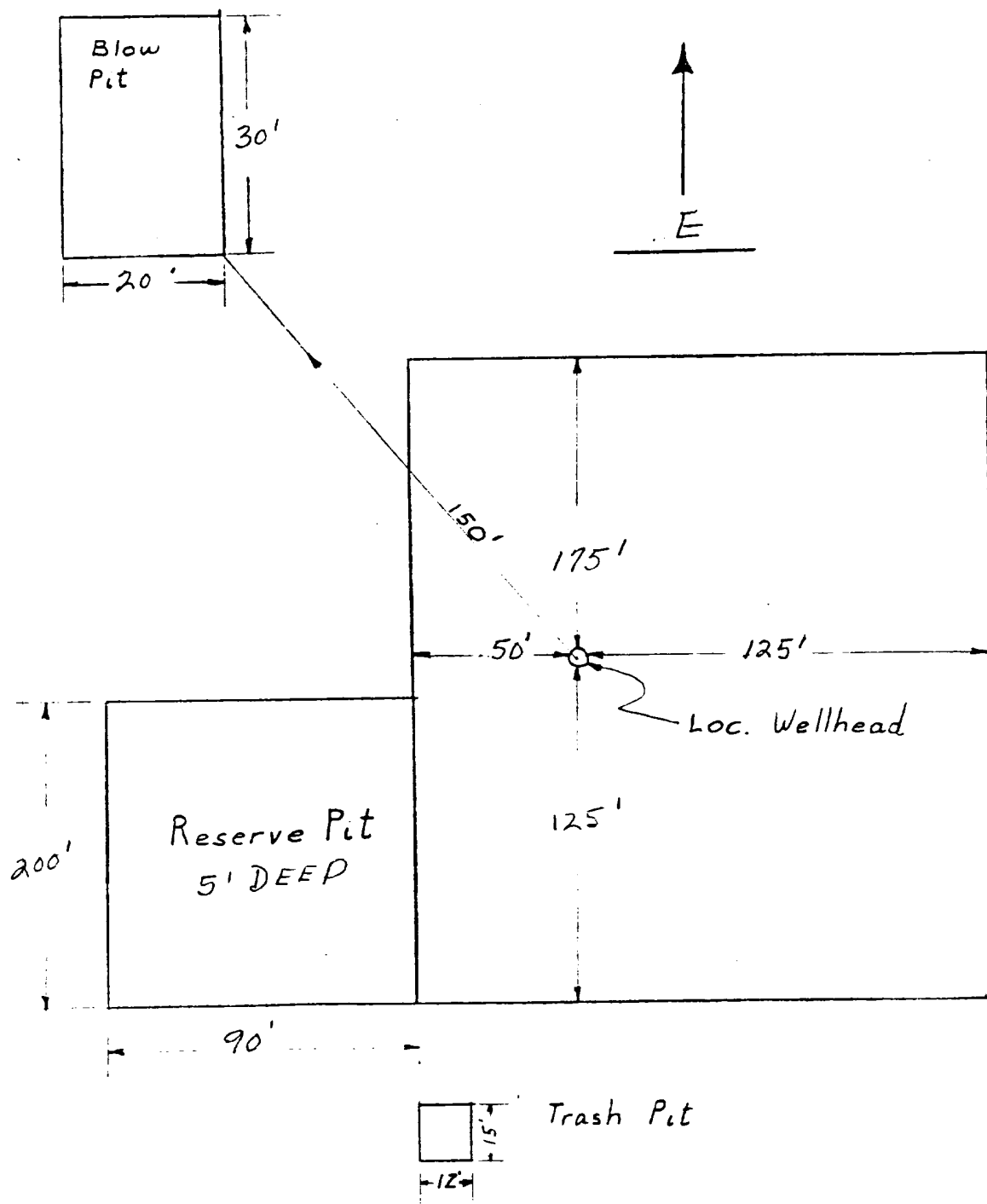
No abnormal pressures or temperatures will be encountered. Hydrogen sulfide gas will be encountered in the Paradox.

Our proposed starting date will be as soon as the well is permitted, and a six week operation is planned.

THIS PORTION, OR ANY PART THEREOF, MAY BE PLACED OUTSIDE OF SUB-STRUCTURE IF DESIRED. USE LONG RADIUS BENDS. PIPE USED FOR EXTENSION SHOULD BE SHOP MADE WITH NO SCREWED CONNECTIONS AND PRESSURE TESTED INITIALLY TO SAME TEST PRESSURE AS THE CHOKE MANIFOLD.

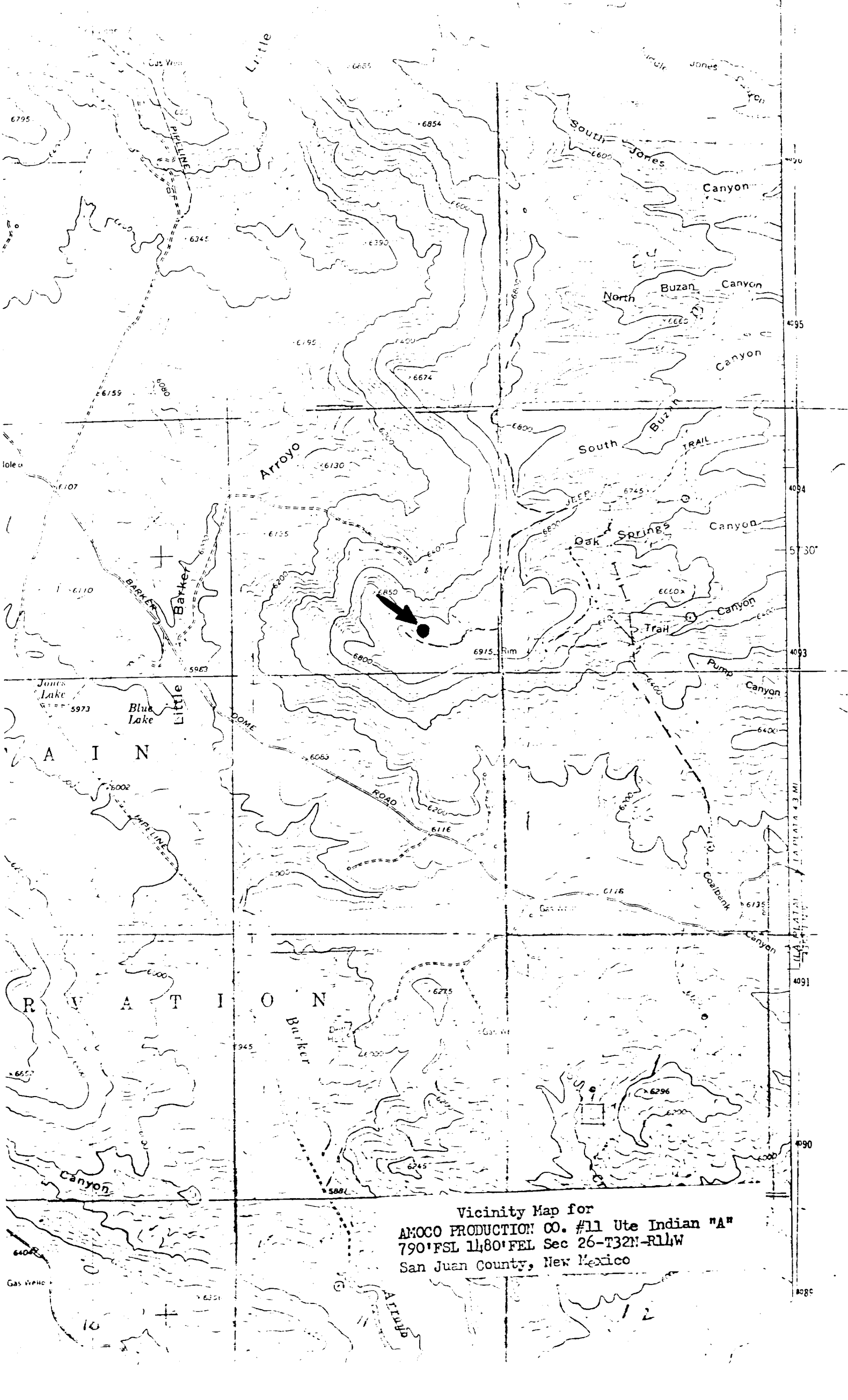


BLOWOUT PREVENTER HOOKUP

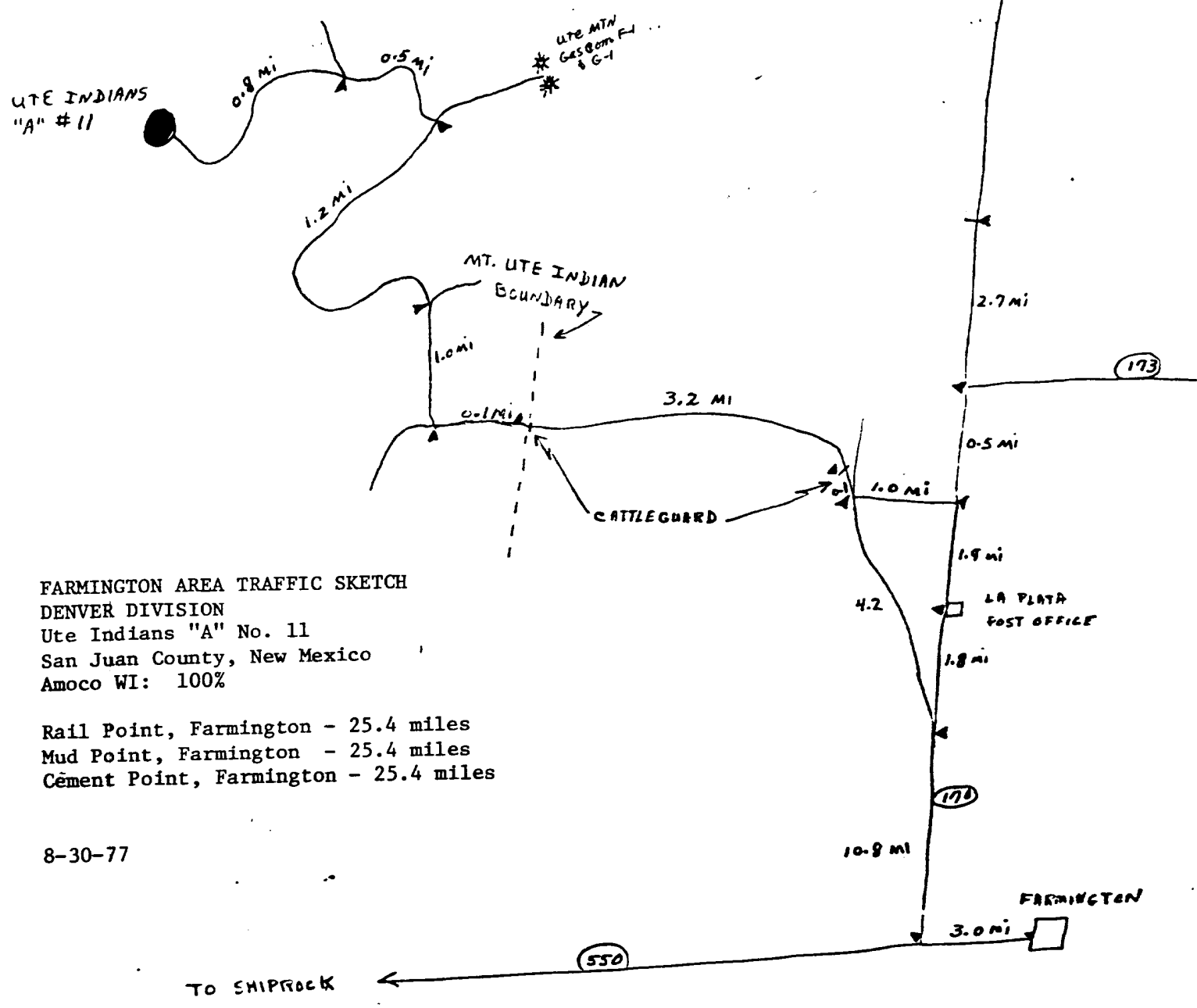
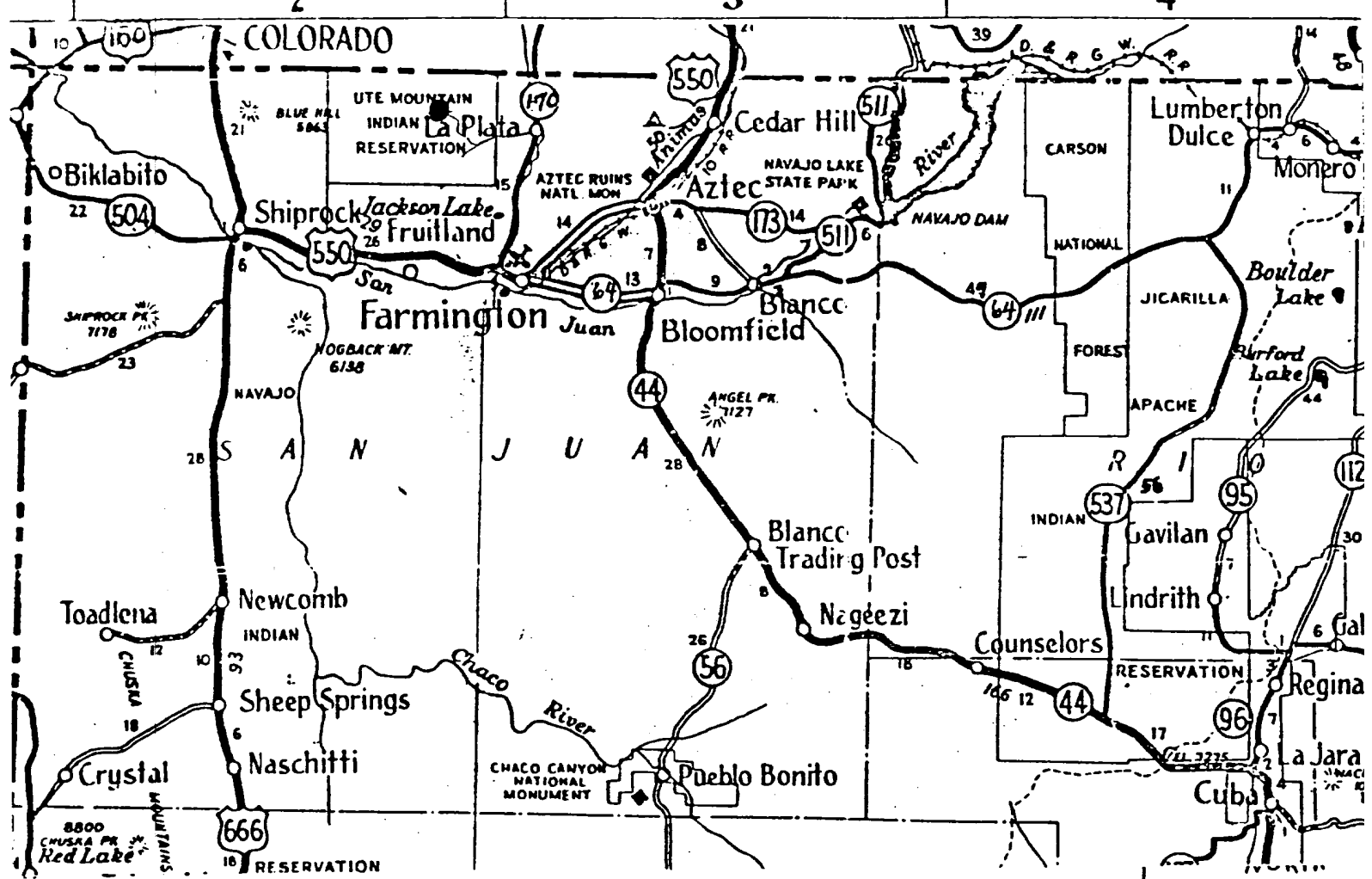


APPROXIMATELY 1.2 Acres

Amoco Production Company		SCALE: NONE
DRILLING LOCATION SPECS		
UTE INDIANS "A" NO. 11		DRG. NO.



Vicinity Map for
AMOCO PRODUCTION CO. #11 Ute Indian "A"
790'FSL 11,80'FEL Sec 26-T32N-R11W
San Juan County, New Mexico



FARMINGTON AREA TRAFFIC SKETCH
 DENVER DIVISION
 Ute Indians "A" No. 11
 San Juan County, New Mexico
 Amoco WI: 100%

 Rail Point, Farmington - 25.4 miles
 Mud Point, Farmington - 25.4 miles
 Cement Point, Farmington - 25.4 miles

8-30-77