

UNITED STATES
DEPARTMENT OF THE INTERIOR
GEOLOGICAL SURVEY

APPLICATION FOR PERMIT TO DRILL, DEEPEN, OR PLUG BACK

1a. TYPE OF WORK

DRILL ☒DEEPEN ☐PLUG BACK ☐

b. TYPE OF WELL

OIL
WELL ☐GAS
WELL ☒

OTHER

SINGLE
ZONE ☒MULTIPLE
ZONE ☐

2. NAME OF OPERATOR

El Paso Natural Gas Company

3. ADDRESS OF OPERATOR

PO Box 990, Farmington, NM 87401

4. LOCATION OF WELL (Report location clearly and in accordance with any State requirements.*)

At surface

1190'S, 1065'E

At proposed prod. zone

14. DISTANCE IN MILES AND DIRECTION FROM NEAREST TOWN OR POST OFFICE*

6 miles SE straightline to Cedar Hill, NM

15. DISTANCE FROM PROPOSED*

LOCATION TO NEAREST
PROPERTY OR LEASE LINE, FT.
(Also to nearest drlg. unit line, if any)

1065'

16. NO. OF ACRES IN LEASE

2480'

18. DISTANCE FROM PROPOSED LOCATION*
TO NEAREST WELL, DRILLING, COMPLETED,
OR APPLIED FOR, ON THIS LEASE, FT.

250'

19. PROPOSED DEPTH

5610'

21. ELEVATIONS (Show whether DF, RT, GR, etc.)

6311' GL

23.

PROPOSED CASING AND CEMENTING PROGRAM

SIZE OF HOLE	SIZE OF CASING	WEIGHT PER FOOT	SETTING DEPTH	QUANTITY OF CEMENT
13 3/4"	9 5/8"	32.3#	200'	224 cu.ft. to circulate
8 3/4"	7"	20.0#	3250'	499 cu.ft. to cover Ojo Alamo
6 1/4"	4 1/2" liner	10.5#	3100-5610'	440 cu.ft. to fill to 3100'

Selectively perforate and sandwater fracture the Mesa Verde formation.

A 3000 psi WP and 6000 psi test double gate preventer equipped with blind and pipe rams will be used for blow out prevention on this well.

This gas is dedicated.

The E/2 of Section 29 is dedicated to this well.

IN ABOVE SPACE DESCRIBE PROPOSED PROGRAM: If proposal is to deepen or plug back, give data on present productive zone and proposed new productive zone. If proposal is to drill or deepen directionally, give pertinent data on subsurface locations and measured and true vertical depths. Give blowout preventer program, if any.

24.

SIGNED

D. G. Buico

TITLE

Drilling Clerk

DATE

December 8, 1977

(This space for Federal or State office use)

PERMIT NO.

APPROVAL DATE

APPROVED BY

TITLE

DATE

CONDITIONS OF APPROVAL, IF ANY:

Abil

*See Instructions On Reverse Side

DEC 12 1977

Geological Survey
Farmington, N.M.

**NEW MEXICO OIL CONSERVATION COMMISSION
WELL LOCATION AND ACERAGE DEDICATION PLAT**

All distances must be from the outer boundaries of the Section

Operator EL PASO NATURAL GAS COMPANY			Lease FIELDS (NM-010989)		Well No. 3-A
Unit Letter P	Section 29	Township 32 NORTH	Range 11 WEST	County SAN JUAN	

Actual Footage Location of Well:
1190 feet from the **SOUTH** line and **1065** feet from the **EAST** line

Ground Level Elev. 6311	Producing Formation MESA VERDE	Pool BLANCO MESA VERDE	Dedicated Acreage: 320.00 Acres
-----------------------------------	--	----------------------------------	---

1. Outline the acreage dedicated to the subject well by colored pencil or hachure marks on the plat below.
2. If more than one lease is dedicated to the well, outline each and identify the ownership thereof (both as to working interest and royalty),
3. If more than one lease of different ownership is dedicated to the well, have the interests of all owners been consolidated by communitization, unitization, force-pooling, etc?

() Yes () No If answer is "yes," type of consolidation

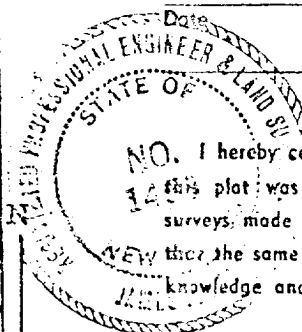
If answer is "no," list the owners and tract descriptions which have actually consolidated. (Use reverse side of this Form if necessary.)

No allowable will be assigned to the well until all interests have been consolidated (by communitization, unitization, forced-pooling, or otherwise) or until a non standard unit, eliminating such interests, has been approved by the Commission.

CERTIFICATION

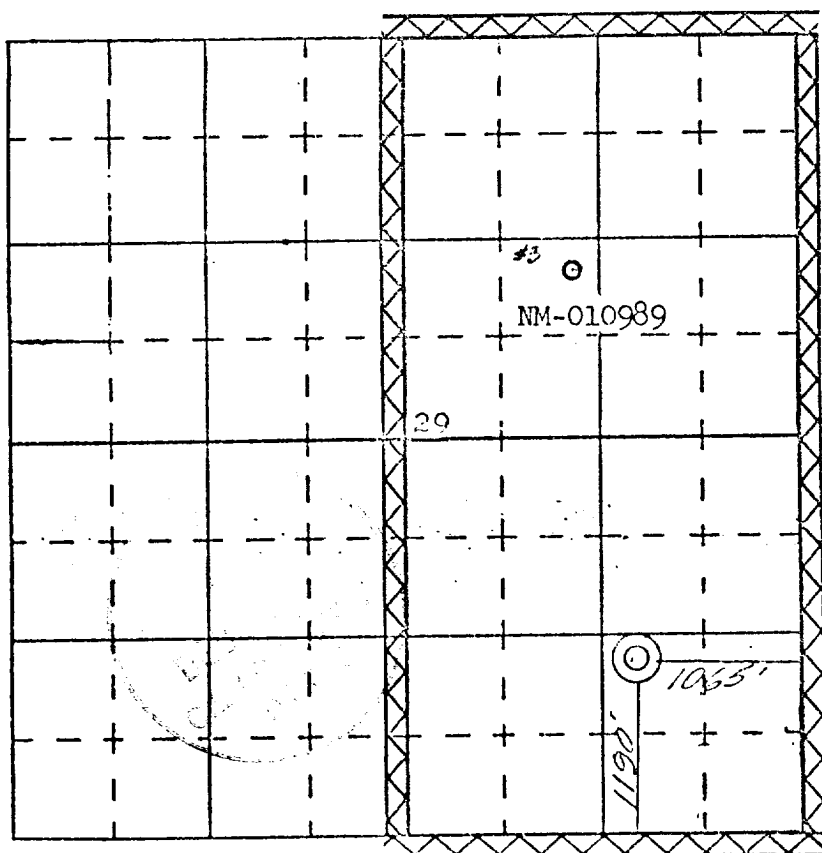
I hereby certify that the information contained herein is true and complete to the best of my knowledge and belief.

D. G. Buico
 Name
Drilling Clerk
 Position
El Paso Natural Gas Co.
 Company
December 8, 1977
 Date



NO. I hereby certify that the well location shown on this plat was plotted from field notes of actual surveys made by me or under my supervision, and that the same is true and correct to the best of my knowledge and belief.

9 November 1977
 Date Surveyed
James P. Leese
 Registered Professional Engineer
 and/or Land Surveyor: **James P. Leese**



SCALE—4 INCHES EQUALS 1 MILE