

NO. OF COPIES RECEIVED	6
DISTRIBUTION	
SANTA FE	1
FILE	1
U.S.G.S.	2
LAND OFFICE	
OPERATOR	2

NEW MEXICO OIL CONSERVATION COMMISSION

30-045-22877
Form C-101
Revised 1-1-65

5A. Indicate Type of Lease	
STATE <input type="checkbox"/>	FEE <input checked="" type="checkbox"/>
5. State Oil & Gas Lease No.	

APPLICATION FOR PERMIT TO DRILL, DEEPEN, OR PLUG BACK

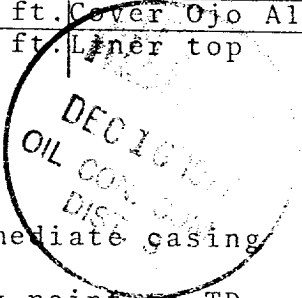
1a. Type of Work	
b. Type of Well OIL WELL <input type="checkbox"/> GAS WELL <input checked="" type="checkbox"/> OTHER <input type="checkbox"/>	
2. Name of Operator Aztec Oil & Gas Company	
3. Address of Operator P. O. Drawer 570, Farmington, New Mexico 87401	
4. Location of Well UNIT LETTER I LOCATED 1460 FEET FROM THE South LINE AND 1010 FEET FROM THE East LINE OF SEC. 24 TWP. 32N RGE. 12W NMPM	
19. Proposed Depth 5729'	
19A. Formation Mesa Verde	
20. Rotary or C.T. Rotary	
21. Elevations (Show whether DF, RT, etc.) 6510'	
21A. Kind & Status Plug. Bond	
21B. Drilling Contractor	
22. Approx. Date Work will start January 15, 1978	

7. Unit Agreement Name
8. Farm or Lease Name Dalsant
9. Well No. #1A
10. Field and Pool, or Wildcat Blanco Mesa Verde
12. County San Juan

PROPOSED CASING AND CEMENT PROGRAM

SIZE OF HOLE	SIZE OF CASING	WEIGHT PER FOOT	SETTING DEPTH	SACKS OF CEMENT	EST. TOP
12-1/4"	9-5/8"	36#	200'	130 cu. ft.	Circ to surface
8-3/4"	7"	20#	3353'	395 cu. ft.	Cover Ojo Alamo
6-1/4"	4-1/2"	10.50#	3203'-5729'	438 cu. ft.	Liner top
	2-3/8"	4.7#	5700'		

Surface formation is San Jose.
Top of Ojo Alamo is at 1599'.
Top of Pictured Cliffs is at 3053'.
Fresh water mud will be used to drill from surface to intermediate casing point.
An air system will be used to drill from intermediate casing point to TD.
It is anticipated that IES and Gamma Ray Density logs be run at intermediate depth.
It is anticipated that Gamma Ray Density and Gamma Ray Induction logs be run at total depth.
No abnormal pressures or poisonous gases are anticipated in this well.
It is expected this well be drilled before April 1, 1978. This depends on time required for approvals, rig availability and the weather.
Gas is dedicated.



IN ABOVE SPACE DESCRIBE PROPOSED PROGRAM: IF PROPOSAL IS TO DEEPEN OR PLUG BACK, GIVE DATA ON PRESENT PRODUCTIVE ZONE AND PROPOSED NEW PRODUCTIVE ZONE. GIVE BLOWOUT PREVENTER PROGRAM, IF ANY.

I hereby certify that the information above is true and complete to the best of my knowledge and belief.

Signed Van Ryan Title District Production Mgr. Date December 14, 1977

(This space for State Use)

APPROVED BY AR Kendrick TITLE SUPERVISOR DIST. #3 DATE DEC 16 1977

CONDITIONS OF APPROVAL, IF ANY:

NEW MEXICO OIL CONSERVATION COMMISSION
WELL LOCATION AND ACREAGE DEDICATION PLAT

Form C-102
Supersedes C-128
Effective 1-1-65

All distances must be from the outer boundaries of the Section.

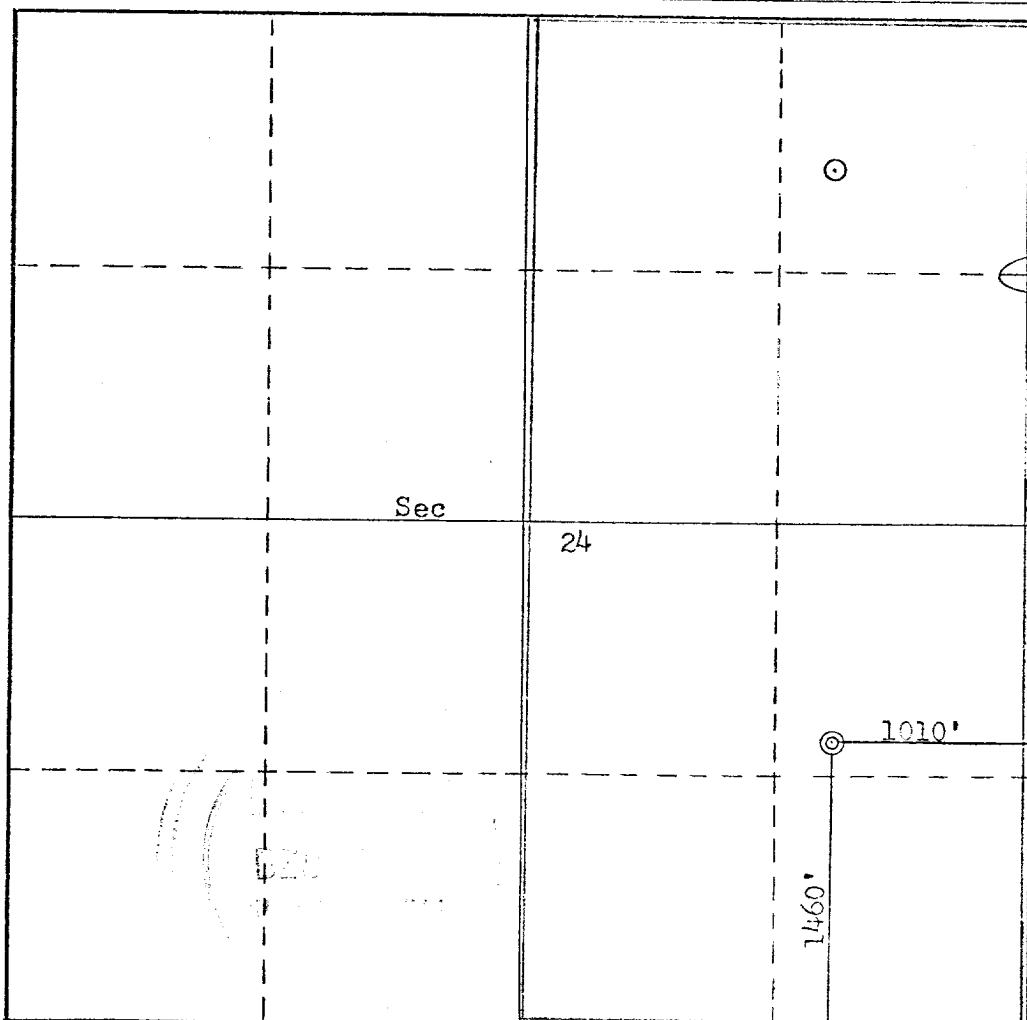
Operator Aztec Oil & Gas Company			Lease Dalsant		Well No. 1A
Unit Letter I	Section 24	Township 32N	Range 12W	County San Juan	
Actual Footage Location of Well: 1460' feet from the South line and 1010 feet from the East line					
Ground Level Elev. 6510	Producing Formation Mesa Verde		Pool Blanco	Dedicated Acreage: 320 Acres	

1. Outline the acreage dedicated to the subject well by colored pencil or hachure marks on the plat below.
2. If more than one lease is dedicated to the well, outline each and identify the ownership thereof (both as to working interest and royalty).
3. If more than one lease of different ownership is dedicated to the well, have the interests of all owners been consolidated by communitization, unitization, force-pooling, etc?

☐ Yes ☐ No If answer is "yes," type of consolidation _____

If answer is "no," list the owners and tract descriptions which have actually been consolidated. (Use reverse side of this form if necessary.) _____

No allowable will be assigned to the well until all interests have been consolidated (by communitization, unitization, forced-pooling, or otherwise) or until a non-standard unit, eliminating such interests, has been approved by the Commission.



CERTIFICATION

I hereby certify that the information contained herein is true and complete to the best of my knowledge and belief.

Name *Stan Ryan*
Position **District Production Mgr.**
Company **Aztec Oil & Gas Company**
Date **December 14, 1977**

I hereby certify that the well location shown on this plat was plotted from field notes of actual surveys made by me or under my supervision, and that the same is true and correct to the best of my knowledge and belief.

Date Surveyed **October 27, 1977**
Registered Professional Engineer and/or Land Surveyor

Fred B. Kern Jr.
Certificate No. **3950**