

NO. OF COPIES RECEIVED	5
DISTRIBUTION	
SANTA FE	1
FILE	1
U.S.G.S.	2
LAND OFFICE	
OPERATOR	1

# NEW MEXICO OIL CONSERVATION COMMISSION

APPROVAL AND  
SIGNATURES  
REQUIRED

EXHIBIT 7-20-78

30-645-27008  
Form C-101  
Revised 1-1-65

5A. Indicate Type of Lease	
STATE <input type="checkbox"/>	FEE <input checked="" type="checkbox"/>
5. State Oil & Gas Lease No.	

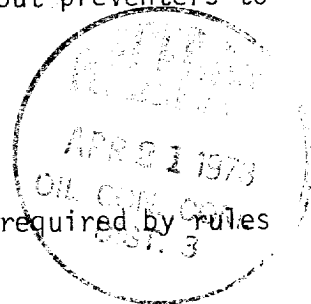
## APPLICATION FOR PERMIT TO DRILL, DEEPEN, OR PLUG BACK

1a. Type of Work		7. Unit Agreement Name	
b. Type of Well OIL WELL <input type="checkbox"/> GAS WELL <input checked="" type="checkbox"/> OTHER <input type="checkbox"/>		8. Farm or Lease Name Montoya	
2. Name of Operator Consolidated Oil & Gas, Inc.		9. Well No. 1-A	
3. Address of Operator 1860 Lincoln Street, Lincoln Tower Building, Denver, Colorado 80295		10. Field and Pool, or Wildcat Mesaverde/Dakota	
4. Location of Well UNIT LETTER <u>115H</u> LOCATED <u>1980</u> FEET FROM THE <u>South</u> LINE AND <u>790</u> FEET FROM THE <u>East</u> LINE OF SEC. <u>35</u> TWP. <u>32</u> North RGE. <u>13</u> West NMPM		12. County San Juan	
19. Proposed Depth 6800'		19A. Formation Dakota	
20. Rotary or C.T. Rotary		21. Elevations (Show whether DF, RT, etc.) 5874'	
21A. Kind & Status Plug. Bond Blanket bond in force		21B. Drilling Contractor NA	
22. Approx. Date Work will start June 15, 1978			

### PROPOSED CASING AND CEMENT PROGRAM

SIZE OF HOLE	SIZE OF CASING	WEIGHT PER FOOT	SETTING DEPTH	SACKS OF CEMENT	EST. TOP
12-1/4"	8-5/8"	24	250'	200	Circ.
7-7/8"	5-1/2"	15.5	6800'	500	2000'

1. Drill 12-1/4" hole to  $\pm$  250'. Set 8-5/8" casing. Circulate cement to surface.
2. WOC 12 hours.
3. Install blowout preventers. Pressure test surface casing and blowout preventers to 1000#.
4. Drill 7-7/8" hole to  $\pm$  6800' with fresh water gel mud. Log.
5. Run 5-1/2" casing and cement same with approximately 300 sx.
6. Selectively perforate and stimulate the Mesaverde and complete as required by rules and regulations.



IN ABOVE SPACE DESCRIBE PROPOSED PROGRAM: IF PROPOSAL IS TO DEEPEN OR PLUG BACK, GIVE DATA ON PRESENT PRODUCTIVE ZONE AND PROPOSED NEW PRODUCTIVE ZONE. GIVE BLOWOUT PREVENTER PROGRAM, IF ANY.

I hereby certify that the information above is true and complete to the best of my knowledge and belief.

Signed Charles M. Parkam Title Senior Production Engineer Date April 19, 1978

(This space for State Use)

APPROVED BY Frank S. Carey TITLE DEPUTY OIL & GAS INSPECTOR, DIST. 3 DATE 4/19/78

CONDITIONS OF APPROVAL, IF ANY:

Subject to approval of N.S.L.

# NEW MEXICO OIL CONSERVATION COMMISSION

## WELL LOCATION AND ACERAGE DEDICATION PLAT

All distances must be from the outer boundaries of the Section

Operator <b>CONSOLIDATED OIL AND GAS, INC.</b>			Lease <b>MONTTOYA</b>		Well No <b>1-A</b>
Unit Letter <b>#5</b>	Section <b>35</b>	Township <b>32 NORTH</b>	Range <b>13 WEST</b>	County <b>SAN JUAN</b>	
Actual Footage Location of Well: <div style="display: flex; justify-content: space-between;"> <span><b>1980</b> feet from the <b>SOUTH</b> line and</span> <span><b>790</b> feet from the <b>EAST</b> line</span> </div>					
Ground Level Elev. <b>5874</b>	Producing Formation <b>Mesaverde</b>	Pool <b>Blanco Mesaverde</b>		Dedicated Acreage: <b>320</b>	Acres

1. Outline the acreage dedicated to the subject well by colored pencil or hachure marks on the plat below.
2. If more than one lease is dedicated to the well, outline each and identify the ownership thereof (both as to working interest and royalty),
3. If more than one lease of different ownership is dedicated to the well, have the interests of all owners been consolidated by communitization, unitization, force-pooling, etc?

☐ Yes ☐ No If answer is "yes," type of consolidation .....

If answer is "no," list the owners and tract descriptions which have actually consolidated. (Use reverse side of this form if necessary.) .....

No allowable will be assigned to the well until all interests have been consolidated (by communitization, unitization, forced-pooling, or otherwise) or until a non standard unit, eliminating such interests, has been approved by the Commission.

### CERTIFICATION

I hereby certify that the information contained herein is true and complete to the best of my knowledge and belief.

*Charles M. Parham*  
Name

**Charles M. Parham**

Position

**Sr. Production Engineer**

Company

**Consolidated Oil & Gas, Inc.**

Date

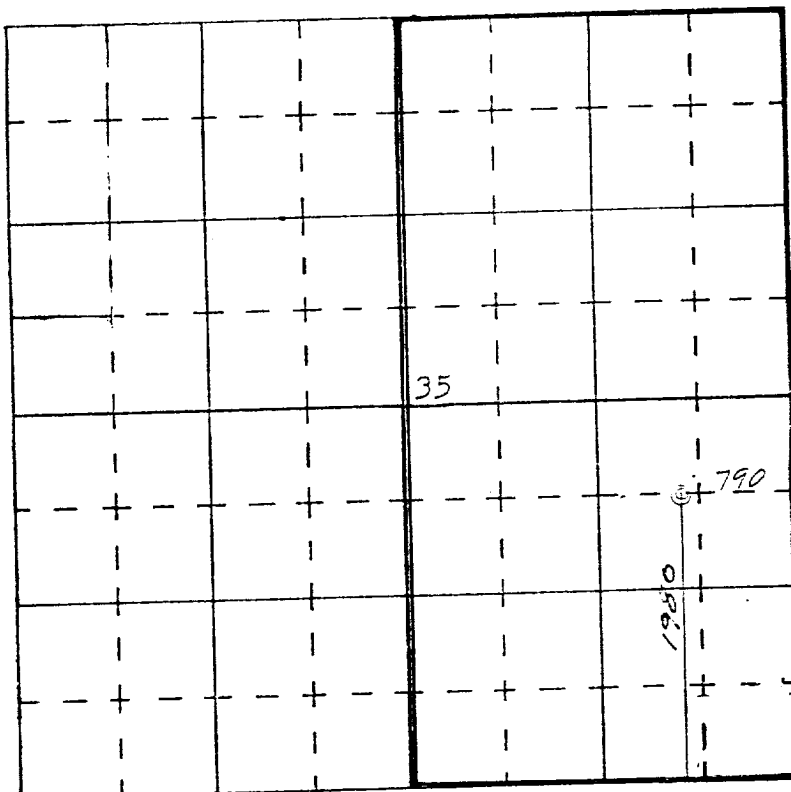
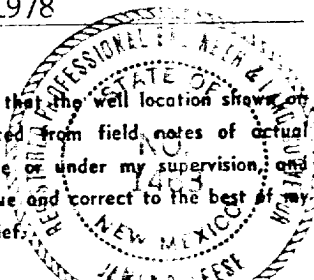
**April 19, 1978**

I hereby certify that the well location shown on this plat was plotted from field notes of actual surveys made by me or under my supervision, and that the same is true and correct to the best of my knowledge and belief.

**30 March, 1978**

Date Surveyed

*James P. Lease*  
Registered Professional Engineer  
and/or Land Surveyor



SCALE—4 INCHES EQUALS 1 MILE

SAN JUAN ENGINEERING COMPANY, FARMINGTON, N. M.

**1463**  
Certificate No.