

DISTRICT I
P.O. Box 1900, Hobbs, NM 88240

DISTRICT II
P.O. Drawer DD, Artesia, NM 88210

DISTRICT III
1000 Rio Brazos Rd., Aztec, NM 87410

OIL CONSERVATION DIVISION

2040 Pacheco St.
Santa Fe, NM 87505

WELL API NO.
30-045-23102

Indicate Type of Lease

STATE ☐

FEE ☒

State Oil & Gas Lease No.

SUNDRY NOTICES AND REPORTS ON WELLS
(DO NOT USE THIS FORM FOR PROPOSALS TO DRILL OR TO DEEPEN OR PLUG BACK TO A
DIFFERENT RESERVOIR. USE "APPLICATION FOR PERMIT"
(FORM C-101) FOR SUCH PROPOSALS.)

Lease Name or Unit Agreement Name

J.E. DECKER

Type of Well:

OIL
WELL ☐

GAS
WELL ☒

OTHER

Name of Operator
GREAT WESTERN DRILLING COMPANY

Well No.

7

Address of Operator
P.O. BOX 1659, MIDLAND, TX 79702

Pool name or Wildcat
BASIN FRUITLAND COAL

Well Location

Unit Letter J : 1480 Feet From The SOUTH Line and 1580 Feet From The EAST Line

12 Section 32N Township 12W Range NMPM SAN JUAN County

Elevation (Show whether DF, RKB, RT, GR, etc.)

6369 GR

11

Check Appropriate Box to Indicate Nature of Notice, Report, or Other Data

NOTICE OF INTENTION TO:

PERFORM REMEDIAL WORK ☐

PLUG AND ABANDON ☒

TEMPORARILY ABANDON ☐

CHANGE PLANS ☐

PULL OR ALTER CASING ☐

OTHER: ☐

SUBSEQUENT REPORT OF:

REMEDIAL WORK ☐

ALTERING CASING ☐

COMMENCE DRILLING OPNS. ☐

PLUG AND ANBANDONMENT ☐

CASING TEST AND CEMENT JOB ☐

OTHER: ☐

Describe Proposed or Completed Operations (Clearly state all pertinent details, and give pertinent dates, including estimated date of starting any proposed work) SEE RULE 1103.

Set CIBP @ 2,495'

Spot 25 sx Class "C" cement @ 2,495' - 2,135'.

Spot 25 sx Class "C" cement @ 1,650' - 1,290'.

Spot 25 sx Class "C" cement @ 360' - Surface.

Cut off wellhead. Erect surface marker.

Fill casing between casing plugs with salt gel muc consisting of 10# brine with 25 lbs of gel per barrel.

I hereby certify that the information above is true and complete to the best of my knowledge and belief.

SIGNATURE

TITLE PRODUCTION TECHNICIAN

DATE 11-11-99

TYPE OR PRINT NAME GINA KING

TELEPHONE NO. 915-682-5241

(This space for State Use)

ORIGINAL SIGNED BY CHARLIE T. PISTARI

17 NOV 11 1999

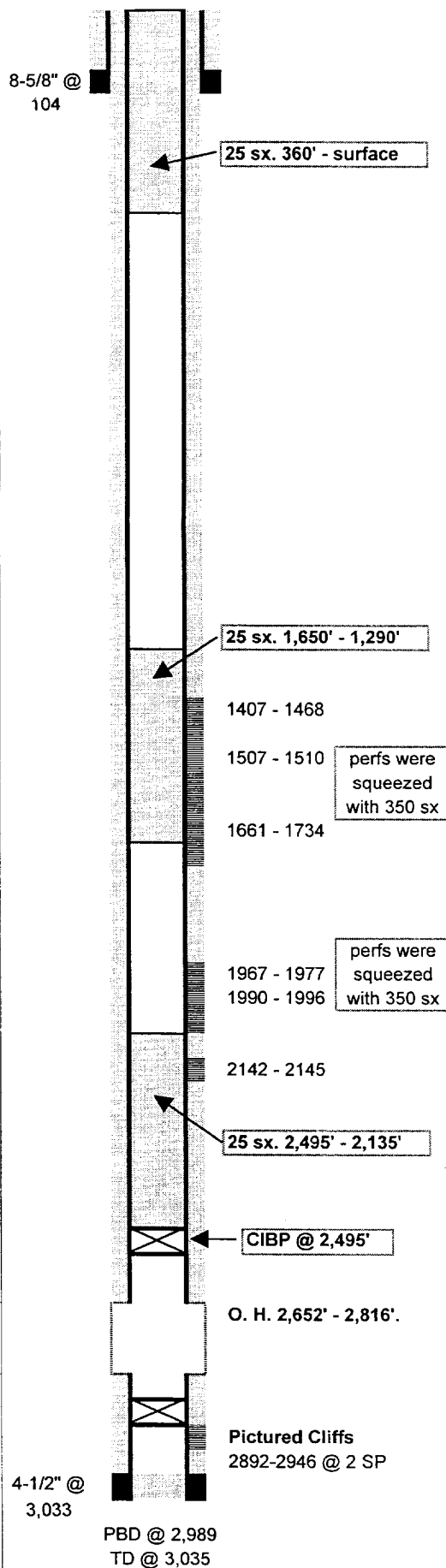
NOV 11 1999

APPROVED BY

TITLE

DATE

CONDITIONS OF APPROVAL, IF ANY:



J. E. Decker # 7

GL: 6,369 Status: active gas
 KB: Zone: Pictured Cliffs
 TD: 3,035
 PBD: 2,989 Perfs: 2,768 2,824
 Fr. Wtr:
 Legal: 1,480 FSL API: 30-045-23102
 1,580 FEL Dist: Farmington
 Unit: J
 Section: 12 Field: Blanco Pictured Cliffs
 Survey: T-32N R-12W
 County: San Juan
 Texas: New Mexico

Casing	Wt	Set	Cmt	Hole	TOC	Method
8-5/8"	24	104	90	12-1/4		circulated
4-1/2"	10.5	3,033	625	7-7/8"	surface	circulated
1-1/2"		2,910				

Fruitland Coal Cavitation Workover History

24-Jul Set CIBP @ 2,882' w/ 35' cement

26-Jul - 4-Aug Mill 4-1/2" casing, cutting a window from 2,652' 2,816'

5-Aug Under-ream open hole from 2,652' - 2,816'.

5-Aug - 8-Aug Attempt to cavitate open hole

9-Aug Perforate open hole section from 2,652' - 2,816'

9-Aug - 28-Aug Continue to cavitate open hole with no success.

28-Aug Release rig and close-in well.

Proposed P&A Procedure

- Set CIBP @ 2,495'
- Spot 25 sx. Class "C" cement at 2,495' - 2,135'
- Spot 25 sx. Class "C" cement at 1,650' - 1,290'
- Spot 25 sx. Class "C" cement at 360' - surface
- Cut off wellhead. Erect surface marker
- Fill casing between cement plugs with salt gel mud consisting of 10# brine with 25 lbs. of gel per barrel.