

SUPPLEMENTAL INFORMATION TO FORM 9-331C  
REQUIRED BY NTL-6  
UTE MOUNTAIN TRIBAL "O" NO. 1  
1840' FSL & 1180' FWL, Section 13, T32N, R14W  
SAN JUAN COUNTY, NEW MEXICO

The geologic name of the surface formation is the Cretaceous Cliffhouse.

The estimated tops of important geological formations bearing hydrocarbons are:

	<u>FORMATION</u>	<u>DEPTH</u>	<u>ELEVATION</u>
	Gallup	2490'	4300'
	Dakota	3170'	3620'
TD	3370'		

Estimated KB elevation is 6790'.

The casing program to be used will include all new casing:

<u>EST. DEPTH</u>	<u>CSG. SIZE</u>	<u>WEIGHT</u>	<u>HOLE SIZE</u>	<u>SACKS CEMENT - TYPE</u>
300'	8-5/8"	24#	12-1/4"	300 Class "B" 2% CaCl <sub>2</sub> .
3370'	4-1/2"	10.5#	7-7/8"	750 Class "B" 6% Gel, 2# Med. Tuf Plug/sx. 100 Class "B" Neat.

Amoco's standard blowout prevention will be employed; see attached drawing of our blowout preventer design.

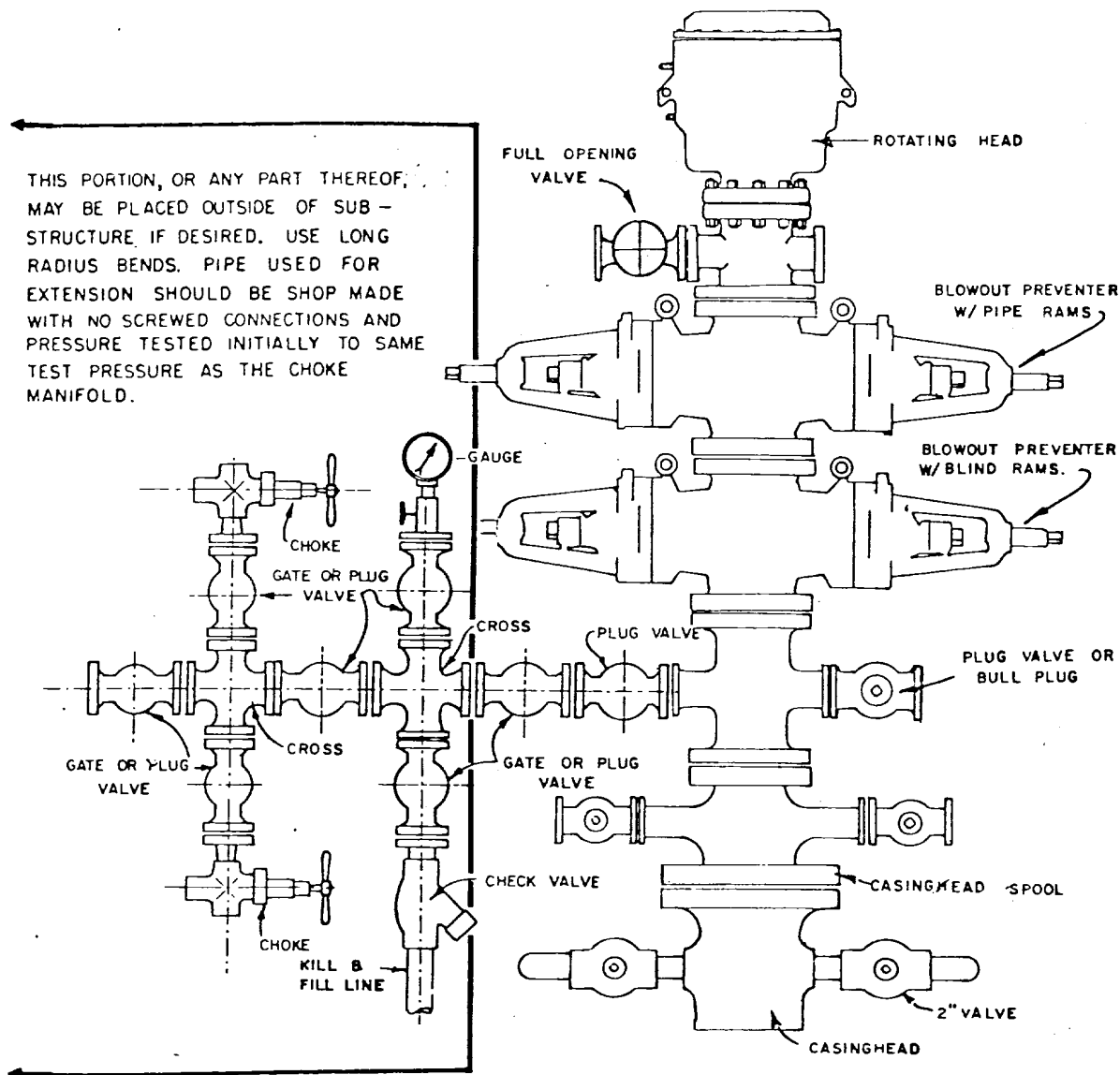
Drilling fluid to TD will be a low solids non-dispersed mud system.

Amoco will run an Induction Electric Survey from TD to 300' and a Density-Gamma Ray Log from TD to surface. No cores or drill stem tests will be taken.

In the past, drilling in this area has shown that no abnormal pressures, temperatures, nor hydrogen sulfide gas will be encountered.

We will start operations as soon as well is permitted, and a three-week operation is anticipated.

THIS PORTION, OR ANY PART THEREOF, MAY BE PLACED OUTSIDE OF SUB-STRUCTURE IF DESIRED. USE LONG RADIUS BENDS. PIPE USED FOR EXTENSION SHOULD BE SHOP MADE WITH NO SCREWED CONNECTIONS AND PRESSURE TESTED INITIALLY TO SAME TEST PRESSURE AS THE CHOKE MANIFOLD.

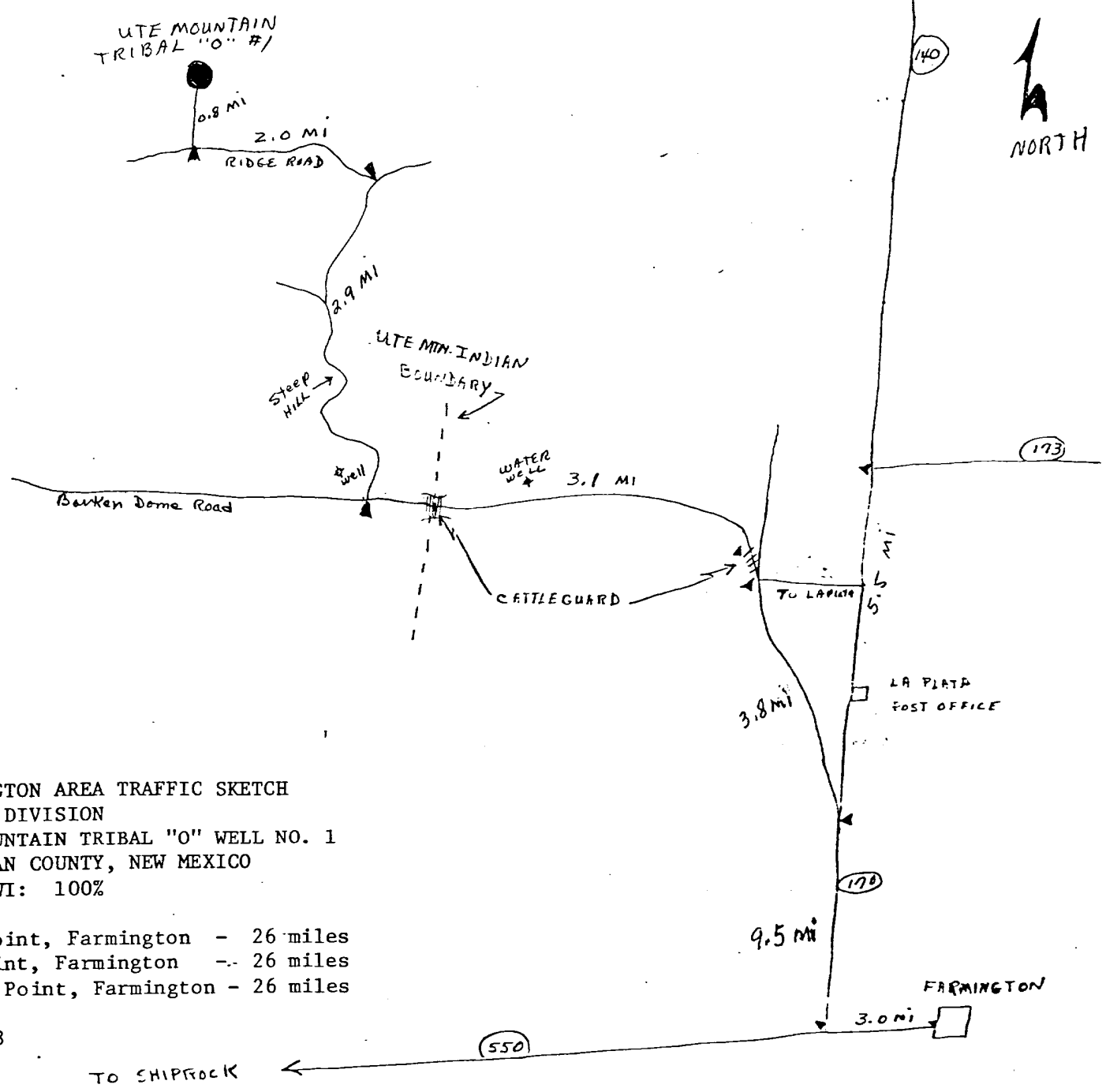
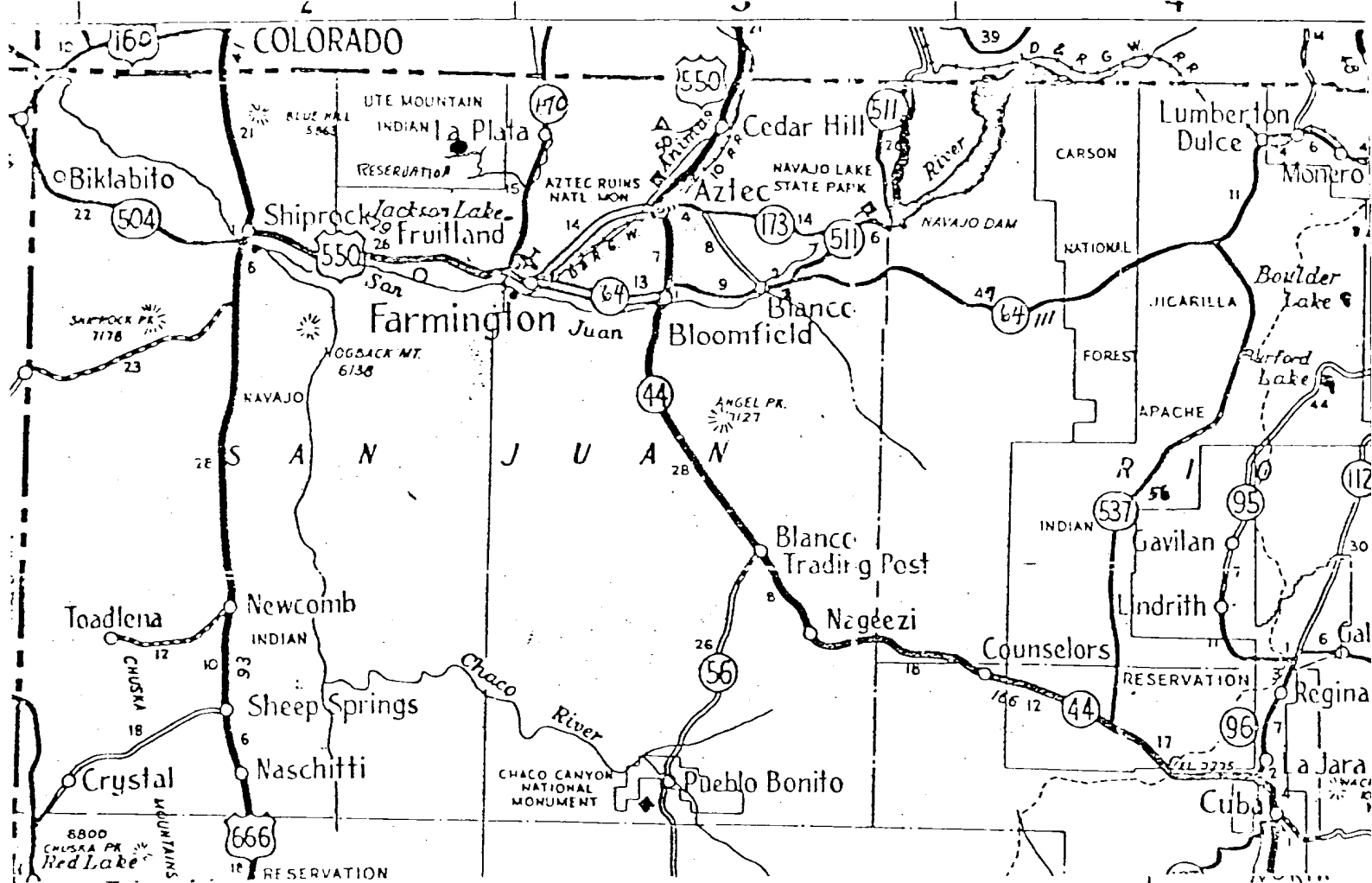


BLOWOUT PREVENTER HOOKUP

MULTI-POINT SURFACE USE PLAN

UTE MOUNTAIN TRIBAL "O" NO. 1  
1840' FSL & 1180' FWL, SECTION 13, T32N, R14W  
SAN JUAN COUNTY, NEW MEXICO

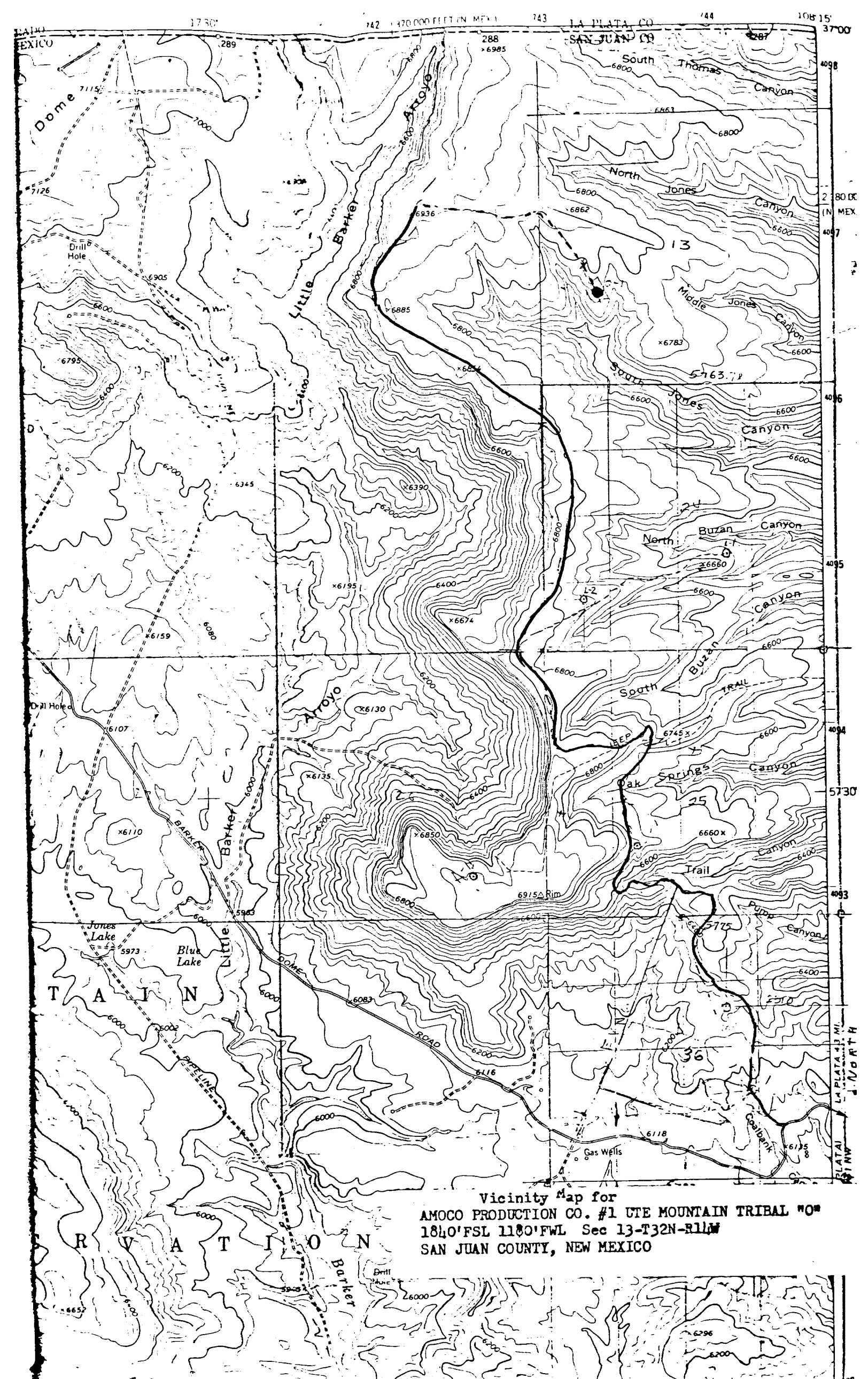
1. The attached road map and sketch show the proposed route to the location and distances from towns.
2. A new access road eight-tenths of a mile in length will be built. The road will be 20-feet wide and bar-ditched on one side.
3. Existing oil and gas wells within a one-mile radius of our proposed well have been spotted on the vicinity map.
4. There are no tank batteries or production facilities located within a one-mile radius of our proposed location.
5. Water will be hauled by truck over existing roads from (1) Gas Company of New Mexico water well located near the abandoned Southern Union Camp, or (2) the San Juan River near Kirtland, New Mexico.
6. No construction material will be hauled in for this location.
7. A 75' X 75' pit will be built on location to hold all drilling waste. Upon completion of well, all waste and liquid will be hauled by truck and fluids bladed into existing roads. All other waste will be covered in pit.
8. There are neither airstrips nor camps in the vicinity.
9. The well site layout, reserve, burn and trash pits are shown on the attached Drill Site Specification Sheet. A 6-foot cut will be on southeast side.
10. Restoration of the surface will be accomplished by cleaning up and leveling upon completion of the well. Drainage ditches will be constructed to handle run-off. Reseeding of the site will be in accordance with instructions from the Bureau of Indian Affairs.
11. The general topography is a sloping terrain with shale outcrops and sandy soil, with vegetation consisting of scrub cedar and pinon trees.  
  
Representatives of the U. S. Geological Survey's Durango Office and Bureau of Indian Affairs Towaoc Office will inspect the site with Amoco personnel. Cultural resources inspection will be conducted by an Archaeologist from San Juan College or Salmon Ruins.
12. A Certification Statement by Amoco's representative is included.

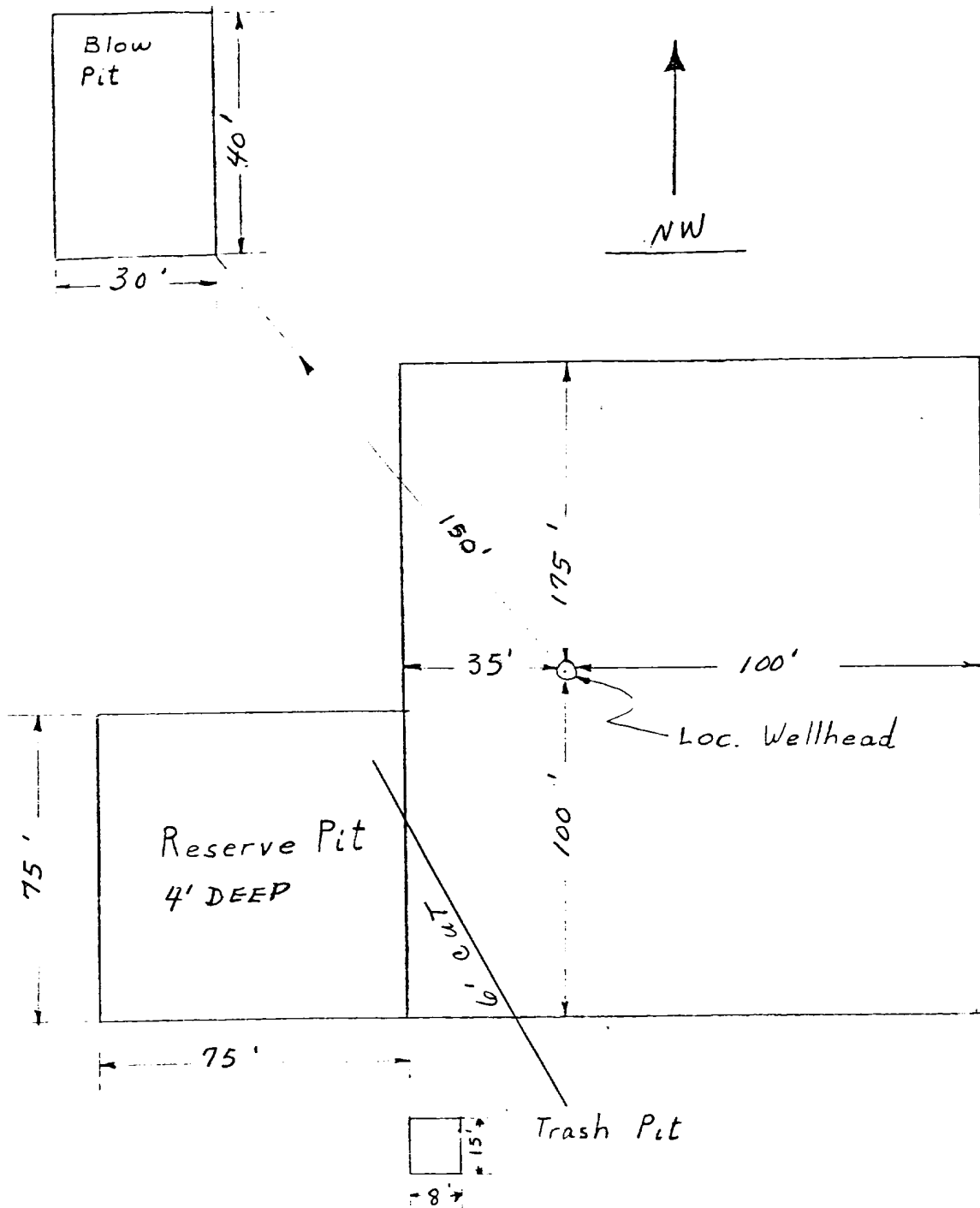


FARMINGTON AREA TRAFFIC SKETCH  
 DENVER DIVISION  
 UTE MOUNTAIN TRIBAL "O" WELL NO. 1  
 SAN JUAN COUNTY, NEW MEXICO  
 AMOCO WI: 100%

Rail Point, Farmington - 26 miles  
 Mud Point, Farmington - 26 miles  
 Cement Point, Farmington - 26 miles

9-11-78





APPROXIMATELY 1.2 Acres

Amoco Production Company	SCALE: NONE
DRILLING LOCATION SPECS UTE MOUNTAIN TRIBAL "O" NO. 1	DRG. NO.

UTE MOUNTAIN TRIBAL "O" NO. 1  
1840' FSL & 1180' FWL, SECTION 13, T32N, R14W  
SAN JUAN COUNTY, NEW MEXICO

CERTIFICATION

I hereby certify that I, or persons under my direct supervision, have inspected the proposed drillsite and access route, that I am familiar with the conditions which presently exist; that the statements made in this plan are, to be best of my knowledge, true and correct; and, that the work associated with the operations proposed herein will be performed by AMOCO PRODUCTION  
COMPANY and its contractors and sub-contractors in conformity with this plan and the terms and conditions under which it is approved.

9/14/78  
Date

L. O. Speer, Jr. Area Supt.  
Name and Title

Amoco Production Company's Representative:

L. O. Speer, Jr.  
Phone: Office: 505-325-8841; Home: 505-325-3247  
Address: 501 Airport Drive  
Farmington, NM 87401