

UNITED STATES
DEPARTMENT OF THE INTERIOR
GEOLOGICAL SURVEY

30-045-23351

APPLICATION FOR PERMIT TO DRILL, DEEPEN, OR PLUG BACK

1A. TYPE OF WORK

DRILL ☒DEEPEN ☐PLUG BACK ☐

B. TYPE OF WELL

OIL
WELL ☐GAS
WELL ☒

OTHER

SINGLE
ZONE ☒MULTIPLE
ZONE ☐

2. NAME OF OPERATOR

Southland Royalty Company

3. ADDRESS OF OPERATOR

P. O. Drawer 570, Farmington, New Mexico

4. LOCATION OF WELL (Report location clearly and in accordance with any State requirements.*)

At surface

1815' FNL & 1170' FEL

At proposed prod. zone

14. DISTANCE IN MILES AND DIRECTION FROM NEAREST TOWN OR POST OFFICE*

12 miles northwest of Aztec, New Mexico

15. DISTANCE FROM PROPOSED*

LOCATION TO NEAREST
PROPERTY OR LEASE LINE, FT.
(Also to nearest drlg. unit line, if any)

16. NO. OF ACRES IN LEASE

17. NO. OF ACRES ASSIGNED
TO THIS WELL

160

18. DISTANCE FROM PROPOSED LOCATION*
TO NEAREST WELL, DRILLING, COMPLETED,
OR APPLIED FOR, ON THIS LEASE, FT.

19. PROPOSED DEPTH

3264'

20. ROTARY OR CABLE TOOLS

Rotary

21. ELEVATIONS (Show whether DF, RT, GR, etc.)

6572' GR

22. APPROX. DATE WORK WILL START*

January 15, 1979

23.

PROPOSED CASING AND CEMENTING PROGRAM

SIZE OF HOLE	SIZE OF CASING	WEIGHT PER FOOT	SETTING DEPTH	QUANTITY OF CEMENT
12-1/4"	8-5/8"	24#	120'	99 cu. ft.
6-3/4"	2-7/8"	6.5#	3264'	409 cu. ft.

Surface formation is San Jose.

Top of Ojo Alamo sand is at 1924'.

Fresh water mud will be used to drill from surface to total depth.

It is anticipated that an IES and a GR-Density log will be run at total depth.

No abnormal pressures or poisonous gases are anticipated in this well.

It is expected that this well will be drilled before April 15, 1979. This depends
on time required for approvals, rig availability and the weather.

Gas is dedicated.

IN ABOVE SPACE DESCRIBE PROPOSED PROGRAM: If proposal is to deepen or plug back, give data on present productive zone and proposed new productive zone. If proposal is to drill or deepen directionally, give pertinent data on subsurface locations and measured and true vertical depths. Give blowout preventer program, if any.

24.

SIGNED

TITLE District Production Manager DATE December 15, 1978

(This space for Federal or State office use)

PERMIT NO.

APPROVAL DATE

APPROVED BY

TITLE

DATE

CONDITIONS OF APPROVAL, IF ANY:

ak Frank

*See Instructions On Reverse Side

NEW MEXICO OIL CONSERVATION COMMISSION
WELL LOCATION AND ACREAGE DEDICATION PLAT

Form C-102
Supersedes C-128
Effective 1-1-65

All distances must be from the outer boundaries of the Section.

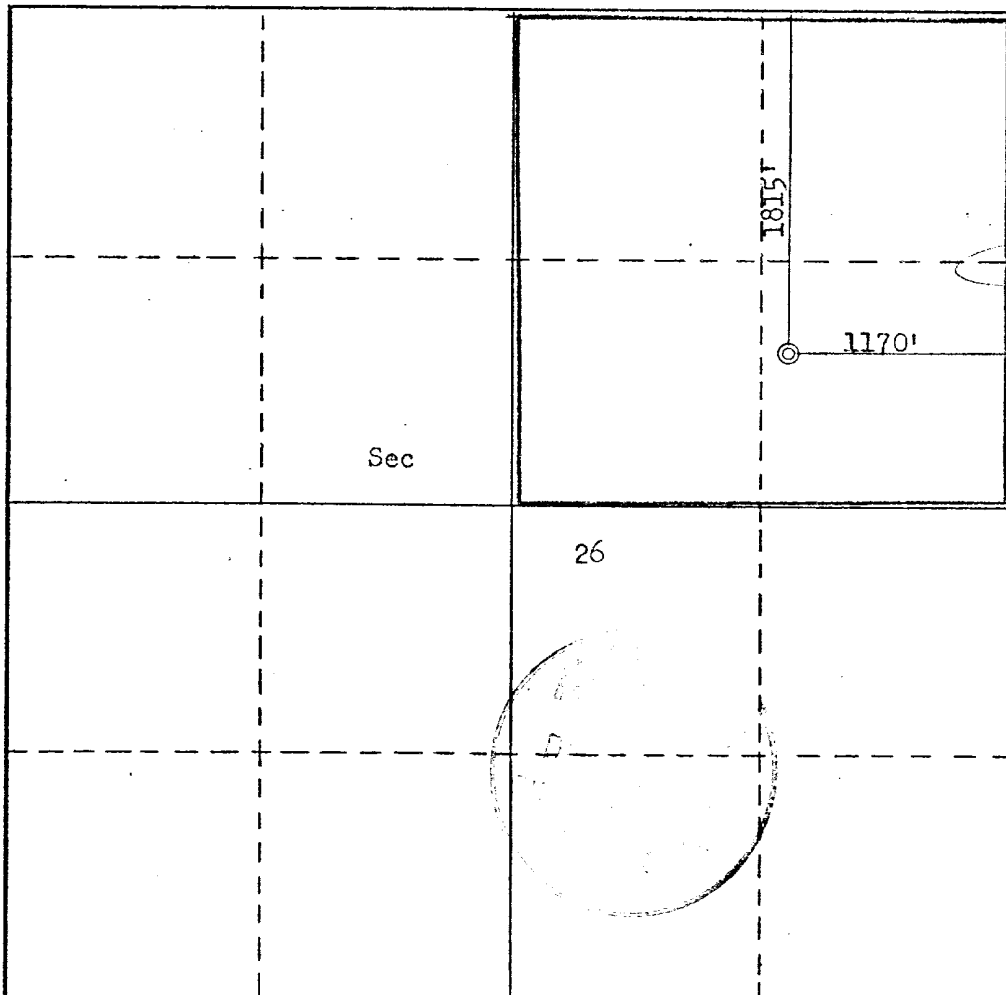
Operator SOUTHLAND ROYALTY COMPANY			Lease DECKER		Well No. 5
Unit Letter H	Section 26	Township 32N	Range 12W	County San Juan	
Actual Forage Location of Well: 1815 feet from the North line and 1170 feet from the East line					
Ground Level Elev. 6572	Producing Formation Pictured Cliffs		Pool Blanco ext	Dedicated Acreage: 160.00 Acres	

1. Outline the acreage dedicated to the subject well by colored pencil or hachure marks on the plat below.
2. If more than one lease is dedicated to the well, outline each and identify the ownership thereof (both as to working interest and royalty).
3. If more than one lease of different ownership is dedicated to the well, have the interests of all owners been consolidated by communitization, unitization, force-pooling, etc?

☐ Yes ☐ No If answer is "yes," type of consolidation _____

If answer is "no," list the owners and tract descriptions which have actually been consolidated. (Use reverse side of this form if necessary.) _____

No allowable will be assigned to the well until all interests have been consolidated (by communitization, unitization, forced-pooling, or otherwise) or until a non-standard unit, eliminating such interests, has been approved by the Commission.



CERTIFICATION

I hereby certify that the information contained herein is true and complete to the best of my knowledge and belief.

Name: _____
Position: _____
District Production Manager
Company: _____
Southland Royalty Company
Date: _____
December 15, 1978

I hereby certify that the well location shown on this plat was plotted from field notes of actual surveys made by me or under my supervision, and that the same is true and correct to the best of my knowledge and belief.

Date Surveyed: _____
November 10, 1978
Registered Professional Engineer
and/or Land Surveyor
Fred B. Kerr Jr.

Certificate No.: _____
3950

0 330 660 990 1320 1650 1980 2310 2640 2970 3300 3630 3960 4290 4620 4950 5280 5610 5940 6270 6600

DRILLING SCHEDULE - DECKER #5

Location: 1815' FNL & 1170' FEL, Section 26, T32N, R12W
San Juan County, New Mexico

Field Blanco Pictured Cliffs

Elevation: 6572' GR

Geology:

Formation Tops:	Ojo Alamo	1924'
	Fruitland	2654'
	Pictured Cliffs	3084'
	Total depth	3264'

Logging Program: IES and GR-Density at total depth.

Coring Program : None

Natural Gauges : None

Drilling

Contractor:

Tool Pusher:

SRC Representative:

SRC Answering Service: 325-1841

Dispatch Number: 325-7391

Mud Program: Fresh water mud from surface to total depth.

Materials

Casing Program:	Hole Size	Depth	Casing Size	Wt. & Grade	
	12-1/4"	120'	8-5/8"	24#	K-55
	6-3/4"	3264'	2-7/8"	6.5#	K-55

Cementing

8-5/8" Surface Casing: 99 cu. ft. (85 sxs) Class "B" with 1/4# gel
flake per sx and 3% CaCl₂. (100% excess)

2-7/8" Production Casing: 409 cu. ft. (235 sxs) of 50/50 Class "B" Poz
with 6% gel mixed with 7.2 gals water per sx to
weigh 12.85 ppg. Tail in with 50 sxs Class "B"
with 2% CaCl₂. If lost circulation occurs add
1/4 cu. ft. fine gilsonite per sack. (50% excess
to cover Ojo Alamo)





Southland Royalty Company

United States Geological Survey
P. O. Box 959
Farmington, New Mexico 87401

Attention: Mr. P. T. McGrath

Dear Sir:

I hereby certify that I, or persons under my direct supervision, have inspected the proposed drillsite and access route; that I am familiar with the conditions which presently exist; that the statements made in this plan are, to the best of my knowledge, true and correct; and, that the work associated with the operations proposed herein be performed by Southland Royalty Company and its contractors and subcontractors in conformity with this plan and the terms and conditions under which it is approved

Date: December 15, 1978

Name: 

Title: District Production Manager





Southland Royalty Company

December 15, 1978

United States Geological Survey
P. O. Box 959
Farmington, New Mexico

Attention: Mr. P. T. McGrath

Re: Blowout Preventer Plan

Dear Sir:

All drilling and completion rigs will be equipped with 8" or larger double gate hydraulic blowout preventers and a hydraulic operated closing unit with steel lines.

The preventer is 3000# working pressure and 6000# test.

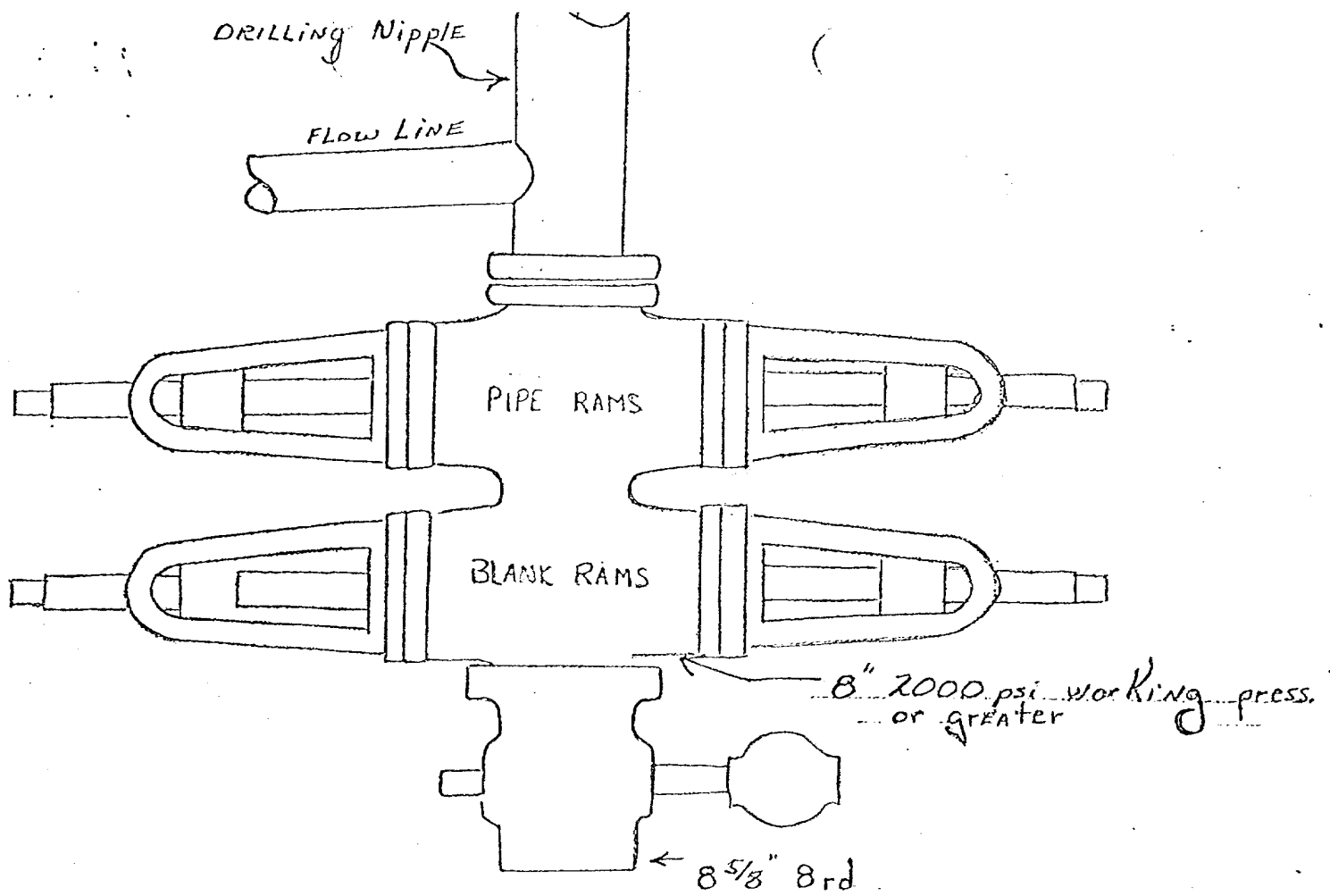
All crews will be thoroughly trained in the operation of this preventer. The preventer will be tested frequently enough to insure proper operation.

Yours truly,

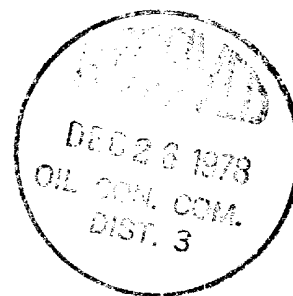
L. O. Van Ryan
District Production Manager

LOVR/dg





Preventers and spools are to have
through bore of 8" - 2000# or larger.





Southland Royalty Company

December 15, 1978

United States Geological Survey
P. O. Box 959
Farmington, New Mexico

Attention: Mr. P. T. McGrath

Dear Sir:

Enclosed please find map showing existing roads and planned access roads to Southland Royalty Company's Decker #5 well. The locations of tank batteries and flow lines will be on location with well. A burn pit will be provided for disposal of trash. Cuttings, drilling fluid and produced fluids will be put into the reserve pit and properly disposed of depending on amount and type of fluids.

Contractor will furnish restroom facilities on location.

There will be no air strips or camps.

Also, enclosed is a location layout showing approximate location of rig, pits and pipe racks and cut required to build this location.

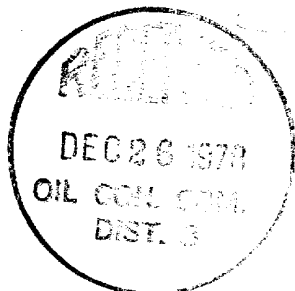
Water supply will be the Farmer's Ditch. All water will be transported by truck and stored on location.

The location will be restored according to Bureau of Land Management standards. This work will begin when all related construction is finished.

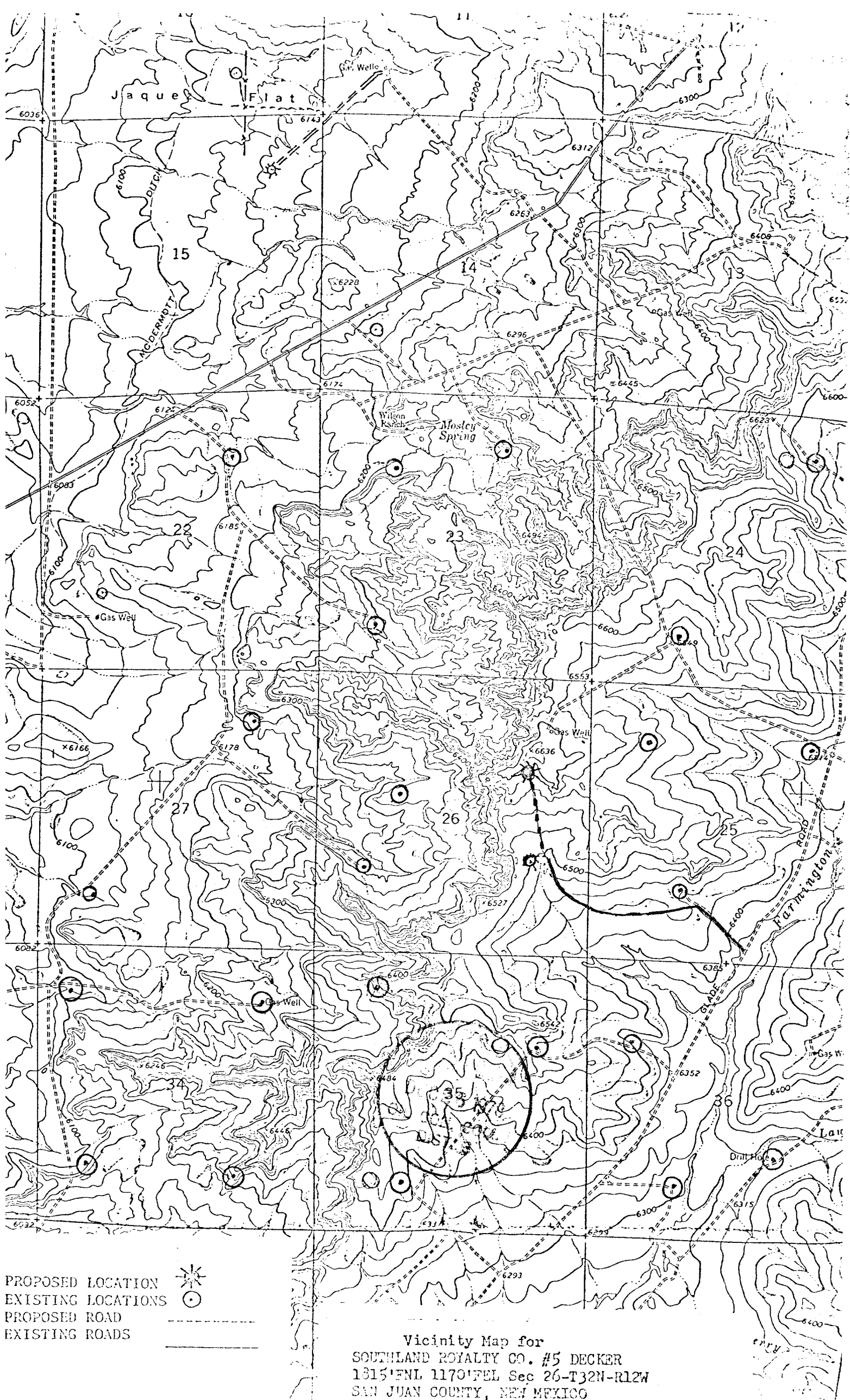
Mr. Max Larson will be Southland Royalty Company's field representative supervising these operations.

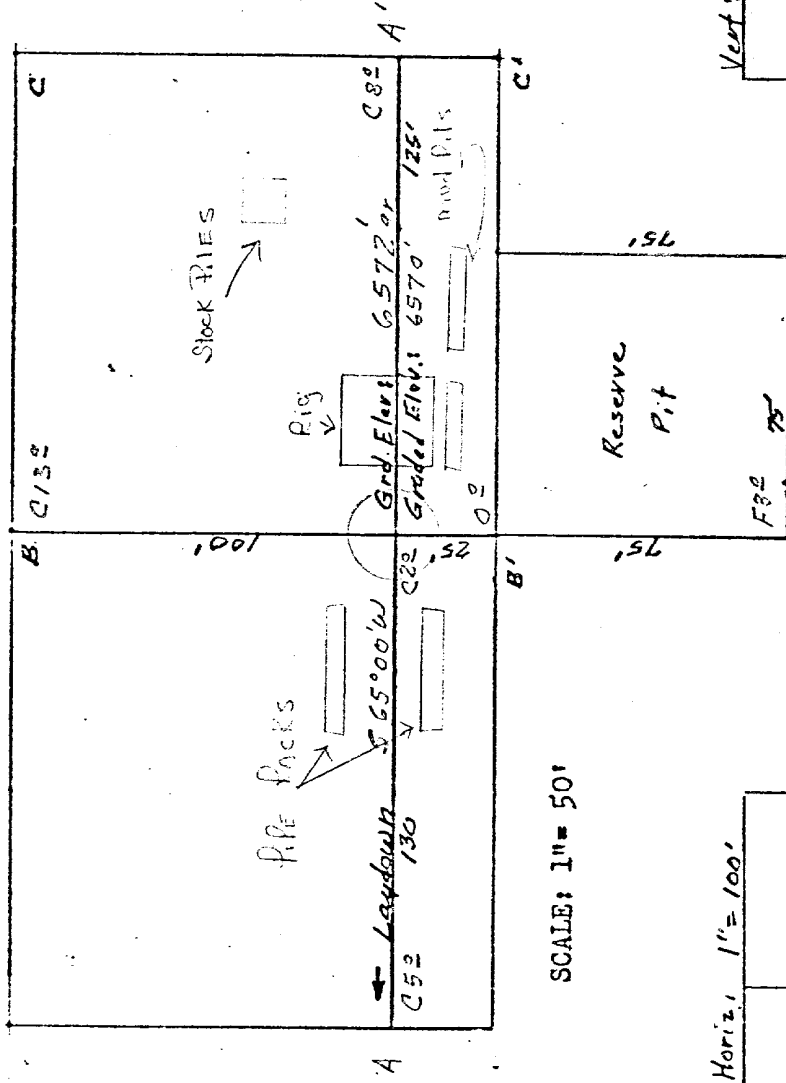
Yours truly,

L. O. Van Ryan
District Production Manager



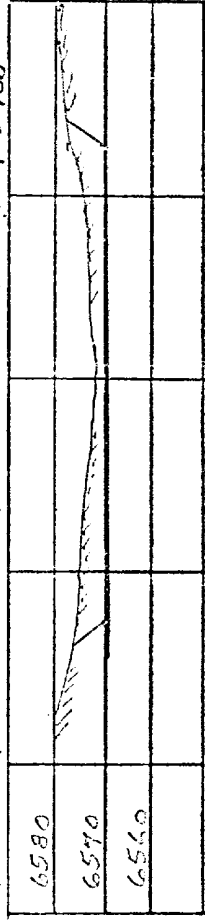
LOVR/dg



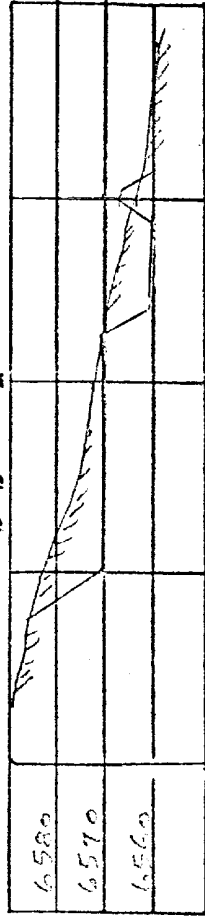


SCALE: 1" = 50'

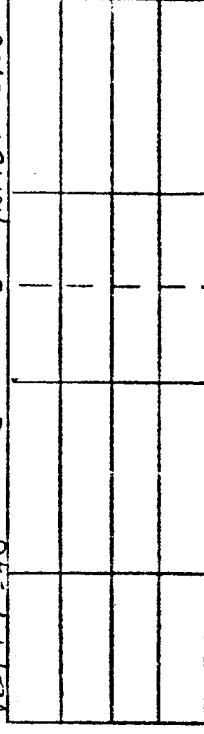
Vert: 1"=40' A-A' & Horiz: 1"=100'



B-B' &



Vert: 1"=40' C-C' & Horiz: 1"=100'



D-D' &

