

UNITED STATES
DEPARTMENT OF THE INTERIOR
GEOLOGICAL SURVEY

APPLICATION FOR PERMIT TO DRILL, DEEPEN, OR PLUG BACK

1a. TYPE OF WORK

DRILL ☒DEEPEN ☐PLUG BACK ☐

b. TYPE OF WELL

OIL
WELL ☐GAS
WELL ☒

OTHER

SINGLE
ZONE ☒MULTIPLE
ZONE ☐

2. NAME OF OPERATOR

AMOCO PRODUCTION COMPANY

3. ADDRESS OF OPERATOR

501 Airport Drive, Farmington, NM 87401

4. LOCATION OF WELL (Report location clearly and in accordance with any State requirements.)*

At surface

E 1840' ENL & 940' FWL, Section 25, T-32-N, R-14-W

At proposed prod. zone

same

14. DISTANCE IN MILES AND DIRECTION FROM NEAREST TOWN OR POST OFFICE*

5 miles Northwest of La Plata, New Mexico

16. DISTANCE FROM PROPOSED*

LOCATION TO NEAREST
PROPERTY OR LEASE LINE, FT.
(Also to nearest drig. unit line, if any)

940'

18. DISTANCE FROM PROPOSED LOCATION*

TO NEAREST WELL, DRILLING, COMPLETED,
OR APPLIED FOR, ON THIS LEASE, FT.

2002'

16. NO. OF ACRES IN LEASE

160.00

19. PROPOSED DEPTH

3430'

17. NO. OF ACRES ASSIGNED
TO THIS WELL

160

20. ROTARY OR CABLE TOOLS

Rotary

21. ELEVATIONS (Show whether DF, RT, GR, etc.)

6813' GL

22. APPROX. DATE WORK WILL START*

As soon as permitted

23.

PROPOSED CASING AND CEMENTING PROGRAM

SIZE OF HOLE	SIZE OF CASING	WEIGHT PER FOOT	SETTING DEPTH	QUANTITY OF CEMENT
12-1/4"	8-5/8"	24#	300'	225 SX
7-7/8"	4-1/2"	10.5#	3430'	1025 SX

The above well is being drilled to develop the Dakota formation. Completion interval and stimulation program to be determined from study of open hole logs.

The acreage is dedicated to Southern Union Gathering Company. Additional information required by NTL-6 for the application to drill and a Multi-Point Surface Use Plan are attached.

IN ABOVE SPACE DESCRIBE PROPOSED PROGRAM: If proposal is to deepen or plug back, give data on present productive zone and proposed new productive zone. If proposal is to drill or deepen directionally, give pertinent data on subsurface locations and measured and true vertical depths. Give blowout preventer program, if any.

24. SIGNED B. E. Jachell TITLE District Engineer DATE April 24, 1979

(This space for Federal or State office use)

PERMIT NO. _____

APPROVAL DATE _____

APPROVED BY _____

TITLE _____

CONDITIONS OF APPROVAL, IF ANY:

ok Frank

RECEIVED

DATE

APR 25 1979

U. S. GEOLOGICAL SURVEY
DURANGO, COLO.

**NEW MEXICO OIL CONSERVATION COMMISSION
WELL LOCATION AND ACREAGE DEDICATION PLAT**

Form C-102
Supersedes C-128
Effective 1-1-65

All distances must be from the outer boundaries of the Section.

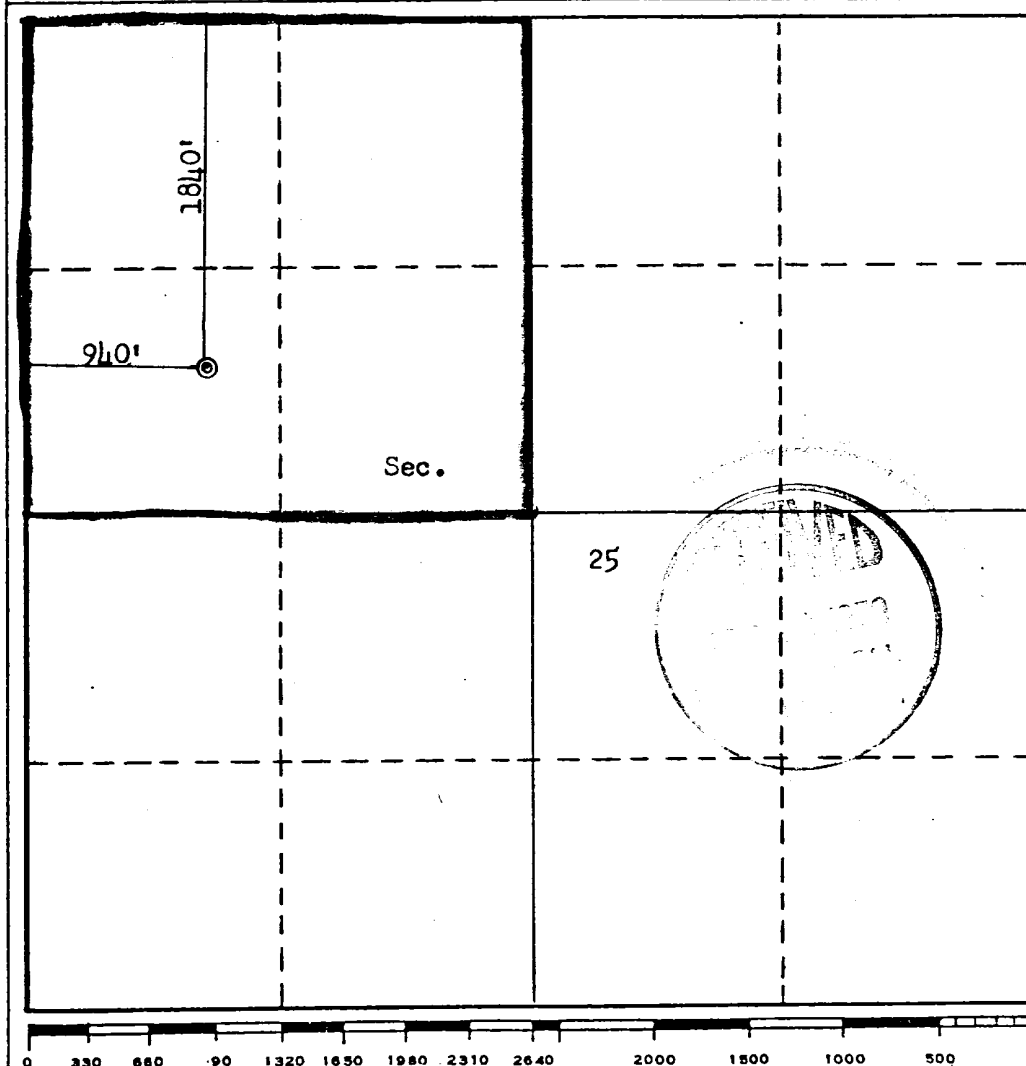
Operator AMOCO PRODUCTION COMPANY			Lease MOUNTAIN UTE GAS COM "J"		Well No. 1
Unit Letter E	Section 25	Township 32N	Range 14W	County San Juan	
Actual Footage Location of Well: 1840 feet from the North line and 940 feet from the West line					
Ground Level Elev. 6813	Producing Formation Dakota		Pool Ute Dome Dakota ✓	Dedicated Acreage: 160 Acres	

1. Outline the acreage dedicated to the subject well by colored pencil or hachure marks on the plat below.
2. If more than one lease is dedicated to the well, outline each and identify the ownership thereof (both as to working interest and royalty).
3. If more than one lease of different ownership is dedicated to the well, have the interests of all owners been consolidated by communitization, unitization, force-pooling, etc?

☐ Yes ☐ No If answer is "yes," type of consolidation _____

If answer is "no," list the owners and tract descriptions which have actually been consolidated. (Use reverse side of this form if necessary.) _____

No allowable will be assigned to the well until all interests have been consolidated (by communitization, unitization, forced-pooling, or otherwise) or until a non-standard unit, eliminating such interests, has been approved by the Commission.



CERTIFICATION

I hereby certify that the information contained herein is true and complete to the best of my knowledge and belief.

B. E. Fackrell

Name
B. E. FACKRELL

Position
DISTRICT ENGINEER

Company
AMOCO PRODUCTION COMPANY

Date
APRIL 16, 1979

I hereby certify that the well location shown on this plat was plotted from field notes of actual surveys made by me or under my supervision, and that the same is true and correct to the best of my knowledge and belief.

Date Surveyed

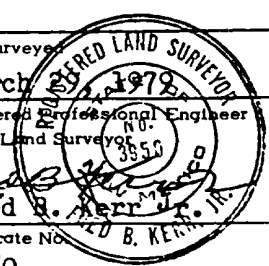
March 1979

Registered Professional Engineer and/or Land Surveyor

Fred B. Kerr
Fred B. Kerr

Certificate No.

3950



SUPPLEMENTAL INFORMATION TO FORM 9-331C
REQUIRED BY NTL-6
MOUNTAIN UTE GAS COM "J" NO. 1
1840' FNL & 940' FWL, SECTION 25, T32N, R14W
SAN JUAN COUNTY, NEW MEXICO

The geologic name of the surface formation is the Cretaceous Menefee.

The estimated tops of important geological formations bearing hydrocarbons are:

<u>FORMATION</u>	<u>DEPTH</u>	<u>ELEVATION</u>
Gallup	2273'	+4552'
Greenhorn	2993'	+3832'
Graneros Shale	3051'	+3774'
Graneros Dakota	3114'	+3711'
Main Dakota	3196'	+3629'

TD 3430'

Estimated KB elevation is 6825'.

The casing program to be used will include all new casing:

<u>EST. DEPTH</u>	<u>CSG. SIZE</u>	<u>WEIGHT</u>	<u>HOLE SIZE</u>	<u>SACKS CEMENT - - TYPE</u>
300'	8-5/8"	24#	12-1/4"	225 Class "B" 2% CaCl ₂ .
3430'	4-1/2"	10.5#	7-7/8"	1025 Class "B" 50/50 Pozmix 6% Gel, 2# Med. Tuf Plug/sx.

Amoco's standard blowout prevention will be employed; see attached drawing of our blowout preventer design.

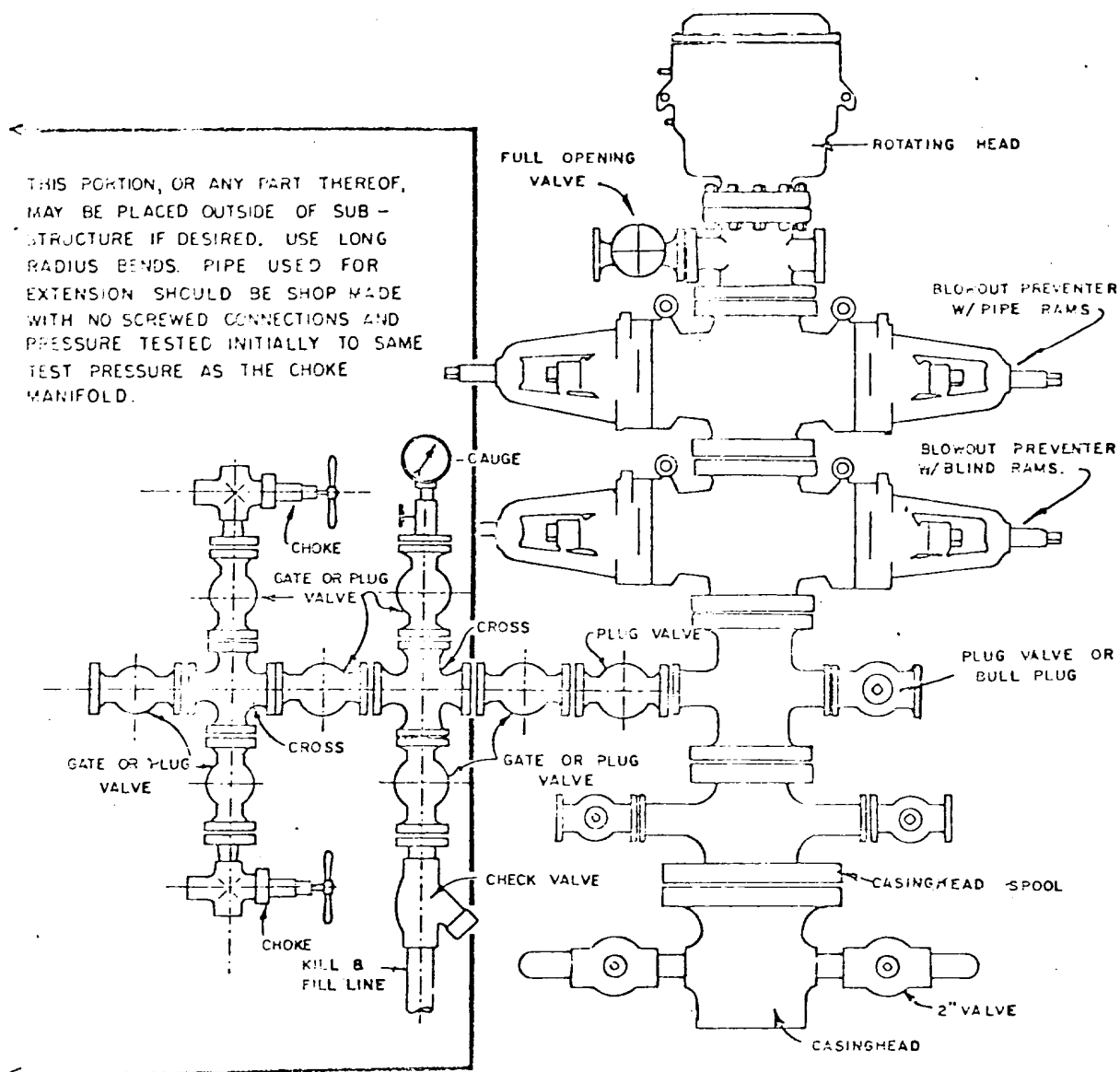
Drilling fluid to TD will be a low solids non-dispersed mud system.

Amoco will run an Induction Electric Survey from TD to 300' and a Density-Gamma Ray Log from TD to 2200' and a Gamma Ray Log from 2000' to surface. No cores or drill stem tests will be taken.

In the past, drilling in this area has shown that no abnormal pressures, temperatures, nor hydrogen sulfide gas will be encountered.

We will start operations as soon as well is permitted, and a three-week operation is anticipated.

THIS PORTION, OR ANY PART THEREOF, MAY BE PLACED OUTSIDE OF SUB-STRUCTURE IF DESIRED. USE LONG RADIUS BENDS. PIPE USED FOR EXTENSION SHOULD BE SHOP MADE WITH NO SCREWED CONNECTIONS AND PRESSURE TESTED INITIALLY TO SAME TEST PRESSURE AS THE CHOKE MANIFOLD.



BLOWOUT PREVENTER HOOKUP

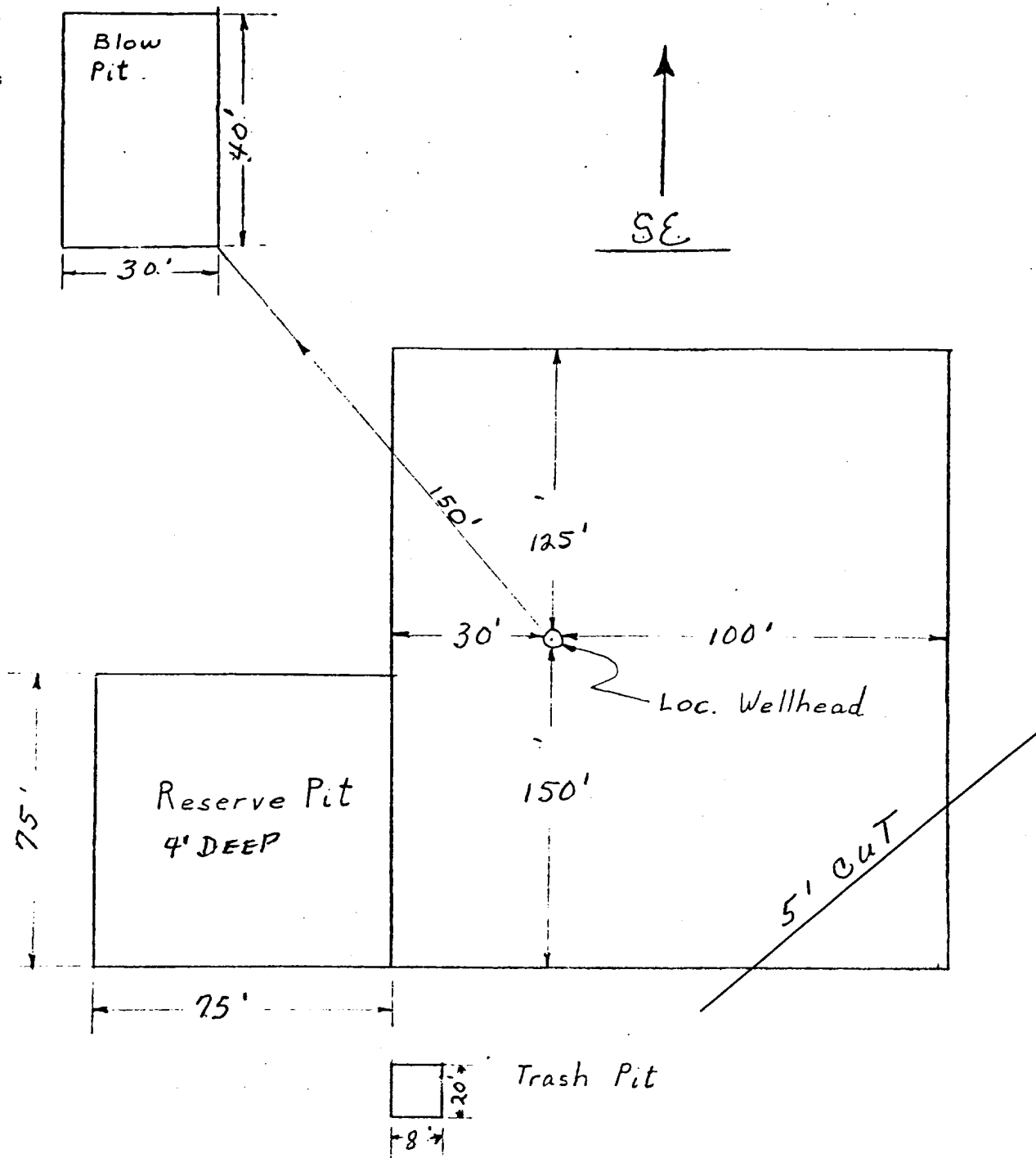
MULTI-POINT SURFACE USE PLAN

MOUNTAIN UTE GAS COM "J" NO. 1
1840' FNL & 940' FWL, SECTION 25, T32N, R14W
SAN JUAN COUNTY, NEW MEXICO

1. The attached road map and sketch show the proposed route to the location and distances from towns.
2. A new road 250 feet in length and 20 feet wide will be built and bar ditched on one side. No cattle guards or culverts unless specified by Ute Indian representative.
3. Existing oil and gas wells within a one-mile radius of our proposed well have been spotted on the vicinity map.
4. There are no tank battery facilities located at nearby wells spotted on the vicinity map.
5. Water will be hauled over existing roads from the La Plata Ditch Company.
6. No construction materials will be hauled in for this location.
7. A 75' X 75' pit will be built on location to hold all drilling waste. Upon completion of well, all waste and liquid will be pumped out and fluids will be bladed into roads.
8. There are neither airstrips nor camps in the vicinity.
9. The well site layout, reserve, burn and trash pits are shown on the attached Drill Site Specification Sheet. A 5-foot cut will be made on south side of location
10. Restoration of the surface will be accomplished by cleaning up and leveling upon completion of the well. Drainage ditches will be built to handle run-off. Reseeding of the site will be in accordance with instructions from the Bureau of Indian Affairs.
11. The general topography and soil characteristics are a broken ridge slope with northeasterly drainage, sandstone outcrops, sandy clay loam soil, with vegetation consisting of juniper and pinon trees, mountain mahogany, bitterbrush, yucca, sagebrush, and native grasses.

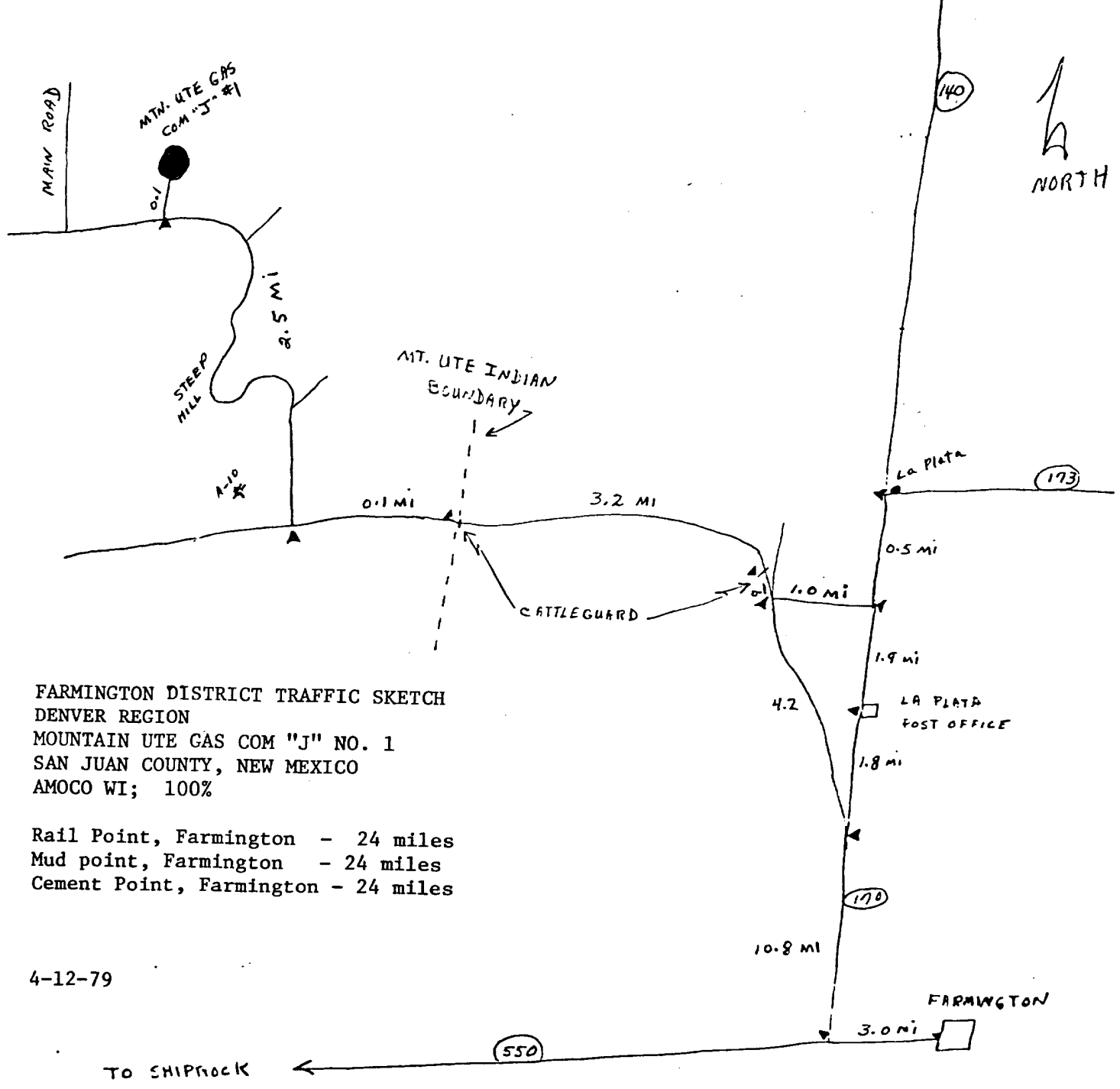
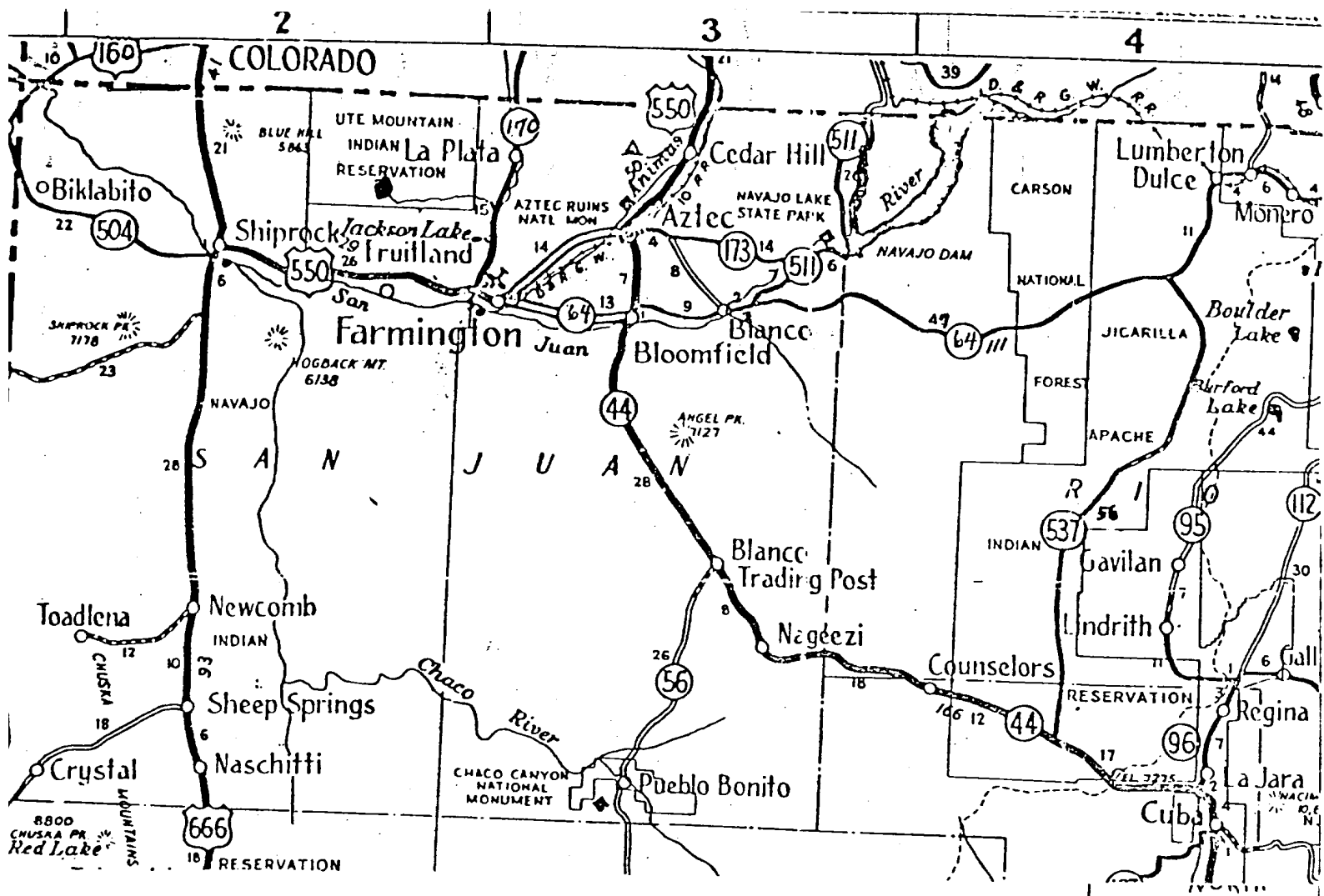
Representatives of the U. S. Geological Survey, Durango Office (Don Englishman) and the Ute Mountain Tribe (T. E. Taylor and Ben Salas) inspected the site with Amoco personnel. Cultural resources inspection was conducted by Dabney Ford, Archaeologist, from San Juan College.

12. A Certification Statement by Amoco's representative is included.



APPROXIMATELY 1.2 Acres

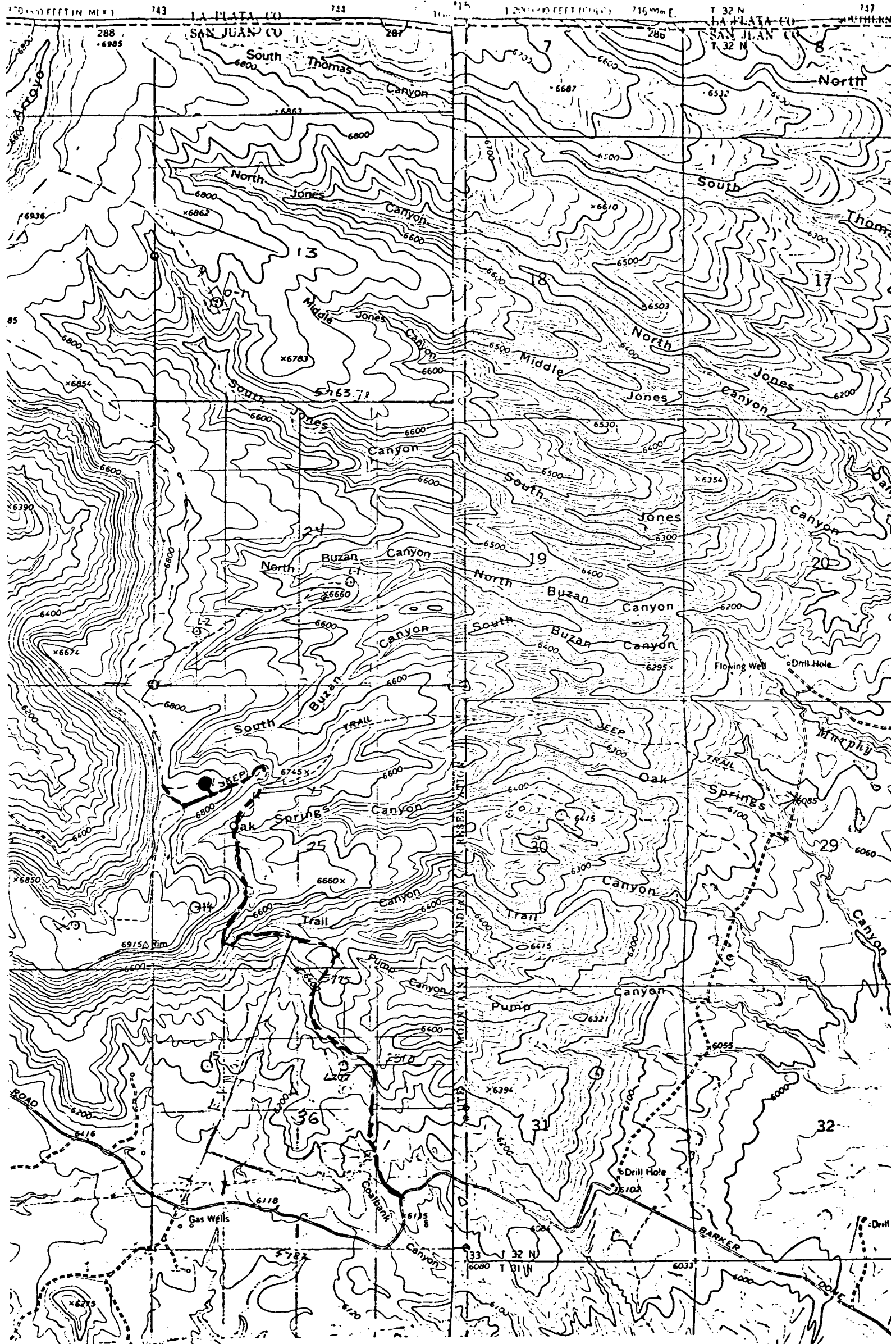
Amoco Production Company	SCALE: NONE
DRILLING LOCATION SPECS	
MTN. UTE GAS COM "J" No. 1	DRG. NO.



FARMINGTON DISTRICT TRAFFIC SKETCH
 DENVER REGION
 MOUNTAIN UTE GAS COM "J" NO. 1
 SAN JUAN COUNTY, NEW MEXICO
 AMOCO WI; 100%

Rail Point, Farmington - 24 miles
 Mud point, Farmington - 24 miles
 Cement Point, Farmington - 24 miles

4-12-79



Vicinity Map for
AMOCO PRODUCTION CO. MOUNTAIN UTE GAS COM "J" #1
1840'FNL 940'FWL Sec. 25-T32N-R11W
SAN JUAN COUNTY, NEW MEXICO

MOUNTAIN UTE GAS COM "J" NO. 1
1840' FNL & 940' FWL, SECTION 25, T32N, R14W
SAN JUAN COUNTY, NEW MEXICO

CERTIFICATION

I hereby certify that I, or persons under my direct supervision, have inspected the proposed drillsite and access route, that I am familiar with the conditions which presently exist; that the statements made in this plan are, to be best of my knowledge, true and correct; and, that the work associated with the operations proposed herein will be performed by AMOCO PRODUCTION
COMPANY and its contractors and sub-contractors in conformity with this plan and the terms and conditions under which it is approved.

April 23, 1979
Date

R. W. Schroeder District Supt.
Name and Title

Amoco Production Company's Representative:

R. W. Schroeder
Phone: Office: 505-325-8841; Home: 505-325-6164.
Address: 501 Airport Drive
Farmington, NM 87401