

UNITED STATES
DEPARTMENT OF THE INTERIOR
GEOLOGICAL SURVEY

APPLICATION FOR PERMIT TO DRILL, DEEPEN, OR PLUG BACK

1a. TYPE OF WORK

DRILL ☒DEEPEN ☐PLUG BACK ☐

b. TYPE OF WELL

OIL
WELL ☐GAS
WELL ☒

OTHER Wildcat

SINGLE
ZONE ☒MULTIPLE
ZONE ☐

2. NAME OF OPERATOR

AMOCO PRODUCTION COMPANY

3. ADDRESS OF OPERATOR

501 Airport Drive, Farmington, New Mexico

4. LOCATION OF WELL (Report location clearly and in accordance with any State requirements.)*
At surface

A 1160' FNL & 790' FEL, Section 26, T-32-N, R-15-W

At proposed prod. zone

same

14. DISTANCE IN MILES AND DIRECTION FROM NEAREST TOWN OR POST OFFICE*

11-1/2 miles west of La Plata, New Mexico

15. DISTANCE FROM PROPOSED*

LOCATION TO NEAREST
PROPERTY OR LEASE LINE, FT.
(Also to nearest drlg. unit line, if any)

790'

18. DISTANCE FROM PROPOSED LOCATION*

TO NEAREST WELL, DRILLING, COMPLETED,
OR APPLIED FOR, ON THIS LEASE, FT.

0'

16. NO. OF ACRES IN LEASE

1280.00

19. PROPOSED DEPTH

3600'

17. NO. OF ACRES ASSIGNED
TO THIS WELL

160

20. ROTARY OR CABLE TOOLS

Rotary

21. ELEVATIONS (Show whether DF, RT, GR, etc.)

6687' GL

22. APPROX. DATE WORK WILL START*

As soon as permitted

23.

PROPOSED CASING AND CEMENTING PROGRAM

SIZE OF HOLE	SIZE OF CASING	WEIGHT PER FOOT	SETTING DEPTH	QUANTITY OF CEMENT
12-1/4 "	8-5/8 "	24#	300'	250 SX.
7-7/8 "	4-1/2"	10.5#	3600'	1075 SX.

This wildcat will be drilled to a depth of 3600' to test the Dakota and Gallup zones. Completion plans will be made after logs are run.

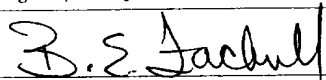
Additional information required by NTL-6 for the application to drill and a Multi-Point Surface Use Plan are attached.

This acreage is committed to El Paso Natural Gas Company.

IN ABOVE SPACE DESCRIBE PROPOSED PROGRAM: If proposal is to deepen or plug back, give data on present productive zone and proposed new productive zone. If proposal is to drill or deepen directionally, give pertinent data on subsurface locations and measured and true vertical depths. Give blowout preventer program, if any.

24.

SIGNED



TITLE District Engineer

DATE May 8, 1979

(This space for Federal or State office use)

PERMIT NO.

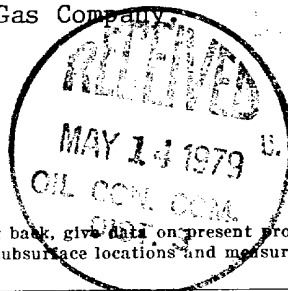
APPROVAL DATE

APPROVED BY

TITLE

DATE

CONDITIONS OF APPROVAL, IF ANY:



OIL CONSERVATION DIVISION

STATE OF NEW MEXICO
ENERGY AND MINERALS DEPARTMENTP. O. BOX 2088
SANTA FE, NEW MEXICO 87501Form C-102
Revised 10-1-78

All distances must be from the outer boundaries of the Section.

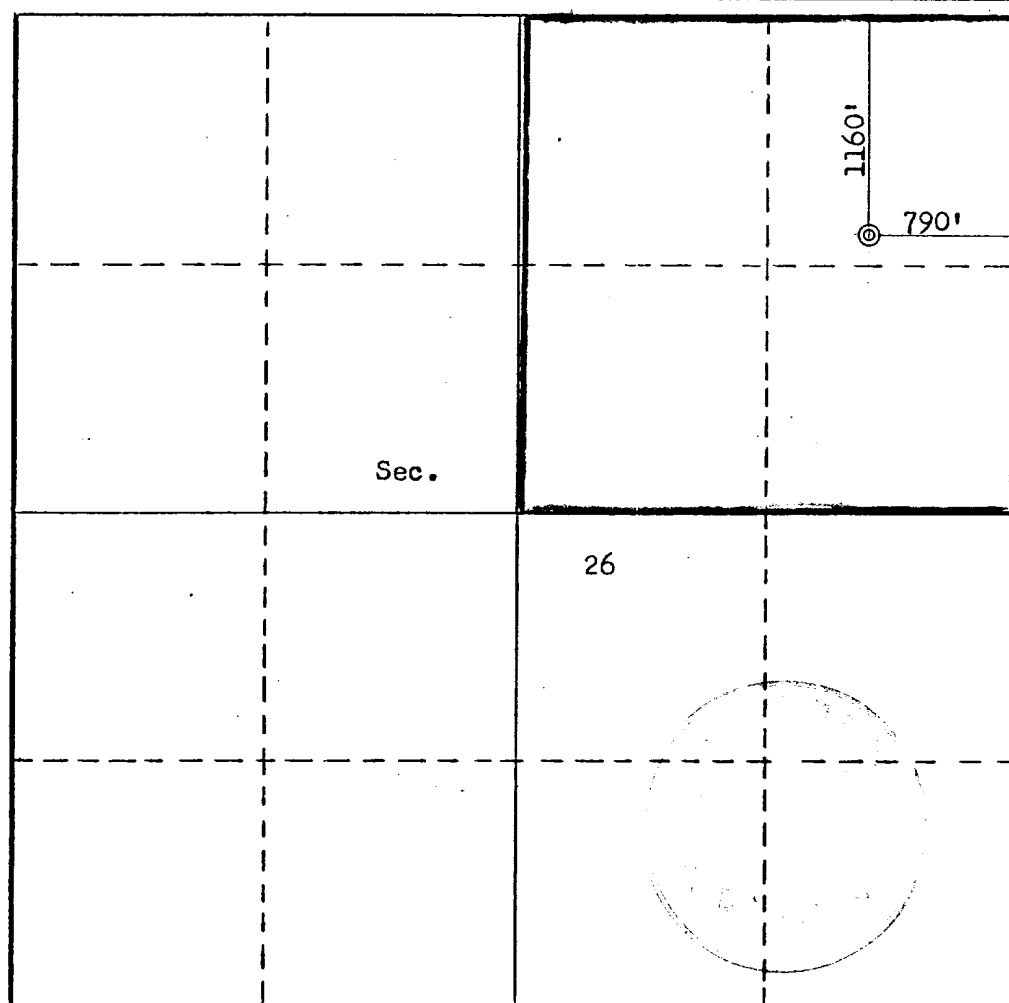
Operator AMOCO PRODUCTION COMPANY			Lease MOUNTAIN UTE TRIBAL "B"		Well No. 1
Unit Letter A	Section 26	Township 32N	Range 15W	County San Juan	
Actual Footage Location of Well: 1160 feet from the North line and 790 feet from the East line					
Ground Level Elev. 6687	Producing Formation Dakota		Pool Wildcat	Dedicated Acreage: 160 Acres	

1. Outline the acreage dedicated to the subject well by colored pencil or hachure marks on the plat below.
2. If more than one lease is dedicated to the well, outline each and identify the ownership thereof (both as to working interest and royalty).
3. If more than one lease of different ownership is dedicated to the well, have the interests of all owners been consolidated by communitization, unitization, force-pooling, etc?

☐ Yes ☐ No If answer is "yes," type of consolidation _____

If answer is "no," list the owners and tract descriptions which have actually been consolidated. (Use reverse side of this form if necessary.) _____

No allowable will be assigned to the well until all interests have been consolidated (by communitization, unitization, forced-pooling, or otherwise) or until a non-standard unit, eliminating such interests, has been approved by the Commission.



CERTIFICATION

I hereby certify that the information contained herein is true and complete to the best of my knowledge and belief.

B. E. Fackrell

Name
B. E. FACKRELL

Position
DISTRICT ENGINEER

Company
AMOCO PRODUCTION COMPANY

Date
APRIL 30, 1979

I hereby certify that the well location shown on this plat was plotted from field notes of actual surveys made by me or under my supervision, and that the same is true and correct to the best of my knowledge and belief.

Date Surveyed

April 27, 1979

Registered Professional Engineer
and/or Land Surveyor

Fred B. Kerr, Jr.
Fred B. Kerr, Jr.

Certificate No.

3950

SUPPLEMENTAL INFORMATION TO FORM 9-331-C
REQUIRED BY NTL-6
MOUNTAIN UTE TRIBAL "B" NO. 1
1160' FNL & 790' FEL, Section 26, T32N, R15W
SAN JUAN COUNTY, NEW MEXICO

The geologic name of the surface formation is the Cretaceous Menfee.

The estimated tops of important geological formations bearing hydrocarbons are:

<u>FORMATION</u>	<u>DEPTH</u>	<u>ELEVATION</u>
Gallup	2460'	+4240'
Verde Gallup	2625'	+4075
Greenhorn	3040'	+3360
Graneros Dakota	3220'	+3480
Main Dakota	3335'	+3365
Morrison	3450'	+3250
TD 3600'		

Estimated KB elevation is 6700'

The casing program to be used will include all new casing:

<u>EST. DEPTH</u>	<u>CSG. SIZE</u>	<u>WEIGHT</u>	<u>HOLE SIZE</u>	<u>SACKS CEMENT</u>	<u>- TYPE</u>
300'	8-5/8"	24#	12-1/4"	250 Class "B" 2% CaCl ₂	
3600'	4-1/2"	10.5#	7-7/8	975 Class "B" 50:50 Poz mix	
				6% Gel, 2# Med. Tuf Plug/sx	
				100 Class "B" Neat.	

Amoco's standard blowout prevention will be employed; see attached drawing of our blowout preventer design.

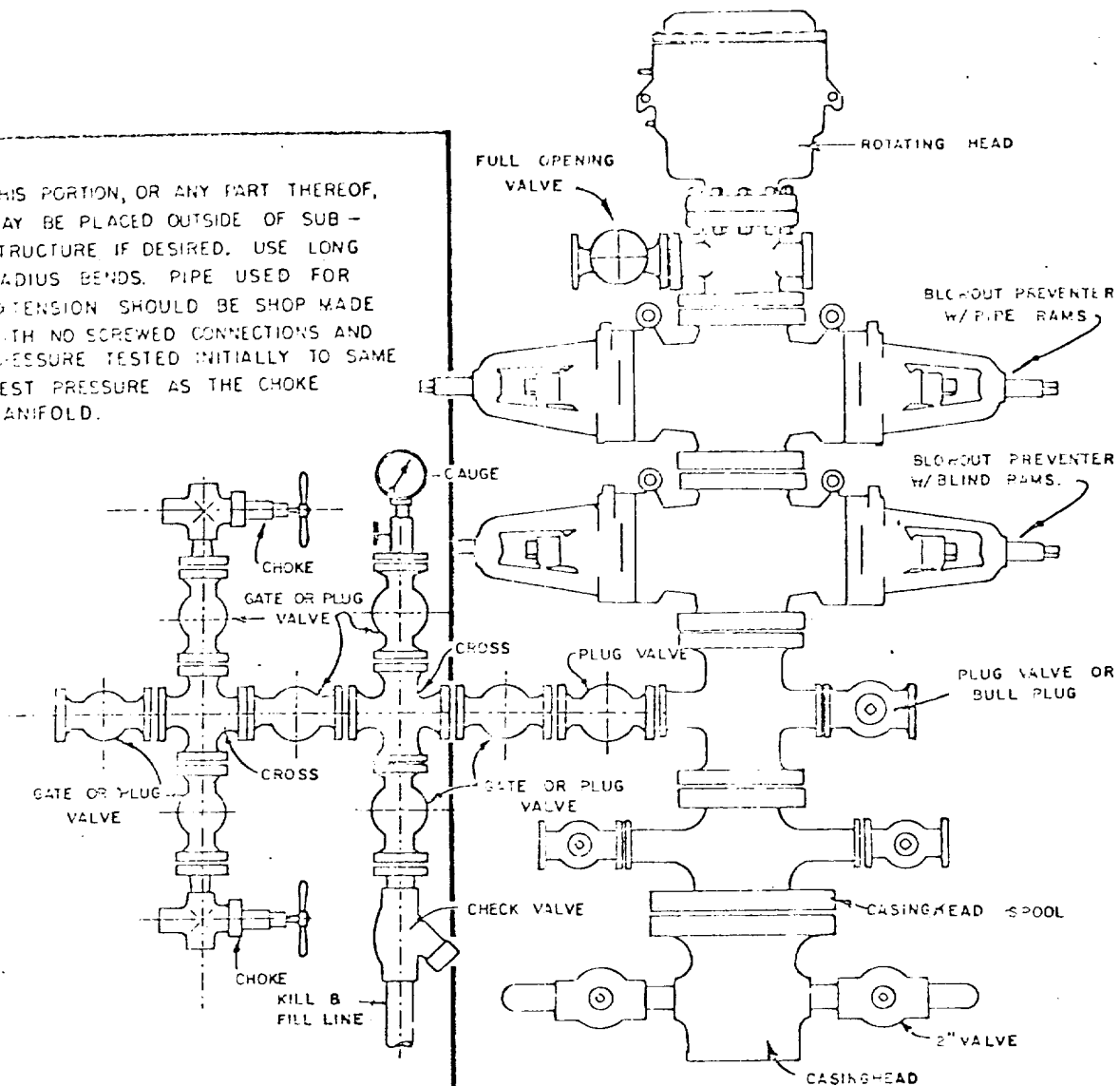
Drilling fluid to TD will be a low solids non-dispersed mud system.

Amoco will run an Induction Gamma-Ray Survey from TD to 300' and a Density-Porosity Gamma-Ray Log from TD to 300'. A Gamma-Ray log will be run from 2000' to surface. Drill stem test will be taken over the Graneros and Main Dakota intervals. A portable mud logging unit will be employed from 2000' to surface.

In the past, drilling in this area has shown that no abnormal pressures, temperatures, nor hydrogen sulfide gas will be encountered.

We will start operations as soon as well is premitted, and a three-week operation is anticipated.

THIS PORTION, OR ANY PART THEREOF, MAY BE PLACED OUTSIDE OF SUB-STRUCTURE IF DESIRED. USE LONG RADIUS BENDS. PIPE USED FOR EXTENSION SHOULD BE SHOP MADE WITH NO SCREWED CONNECTIONS AND PRESSURE TESTED INITIALLY TO SAME TEST PRESSURE AS THE CHOKE MANIFOLD.



BLOWOUT PREVENTER HOOKUP

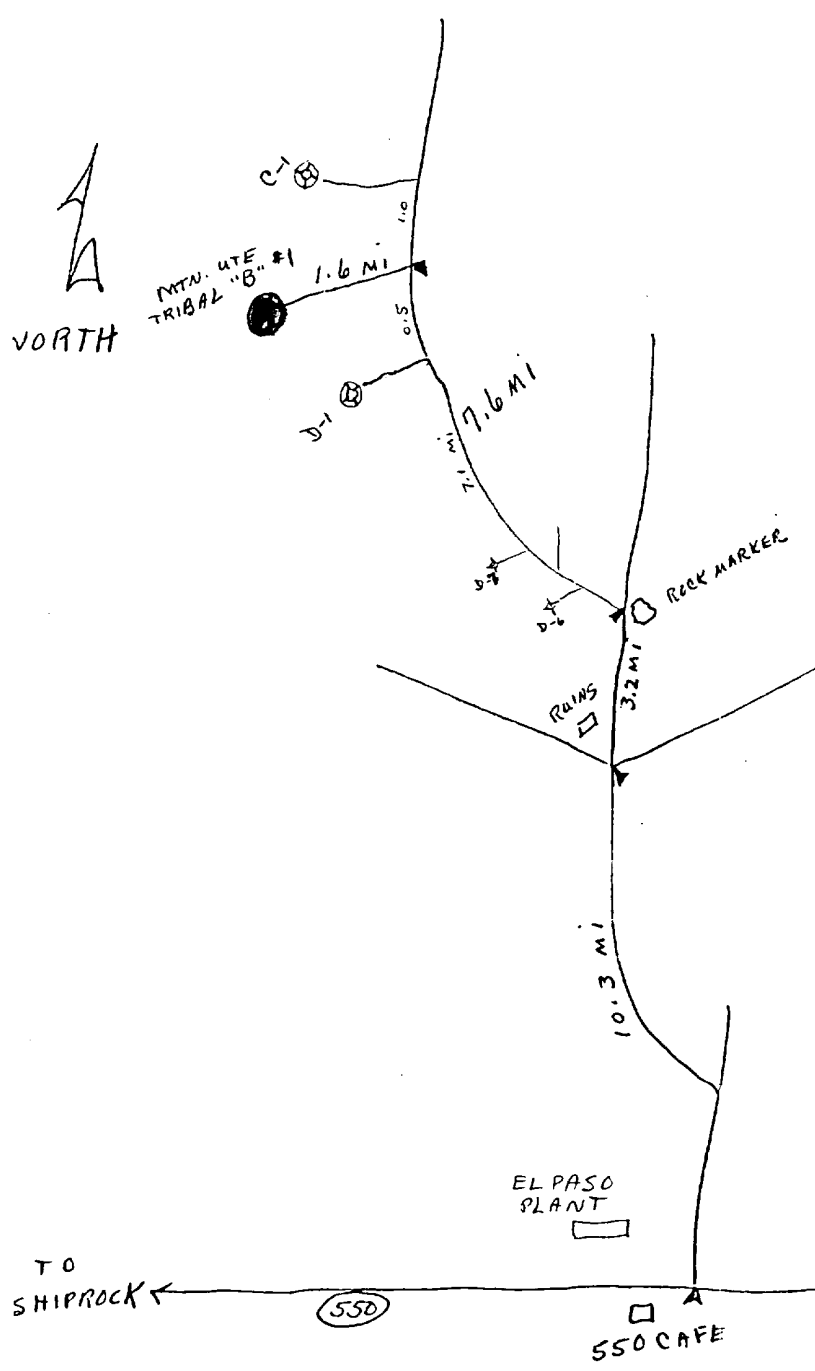
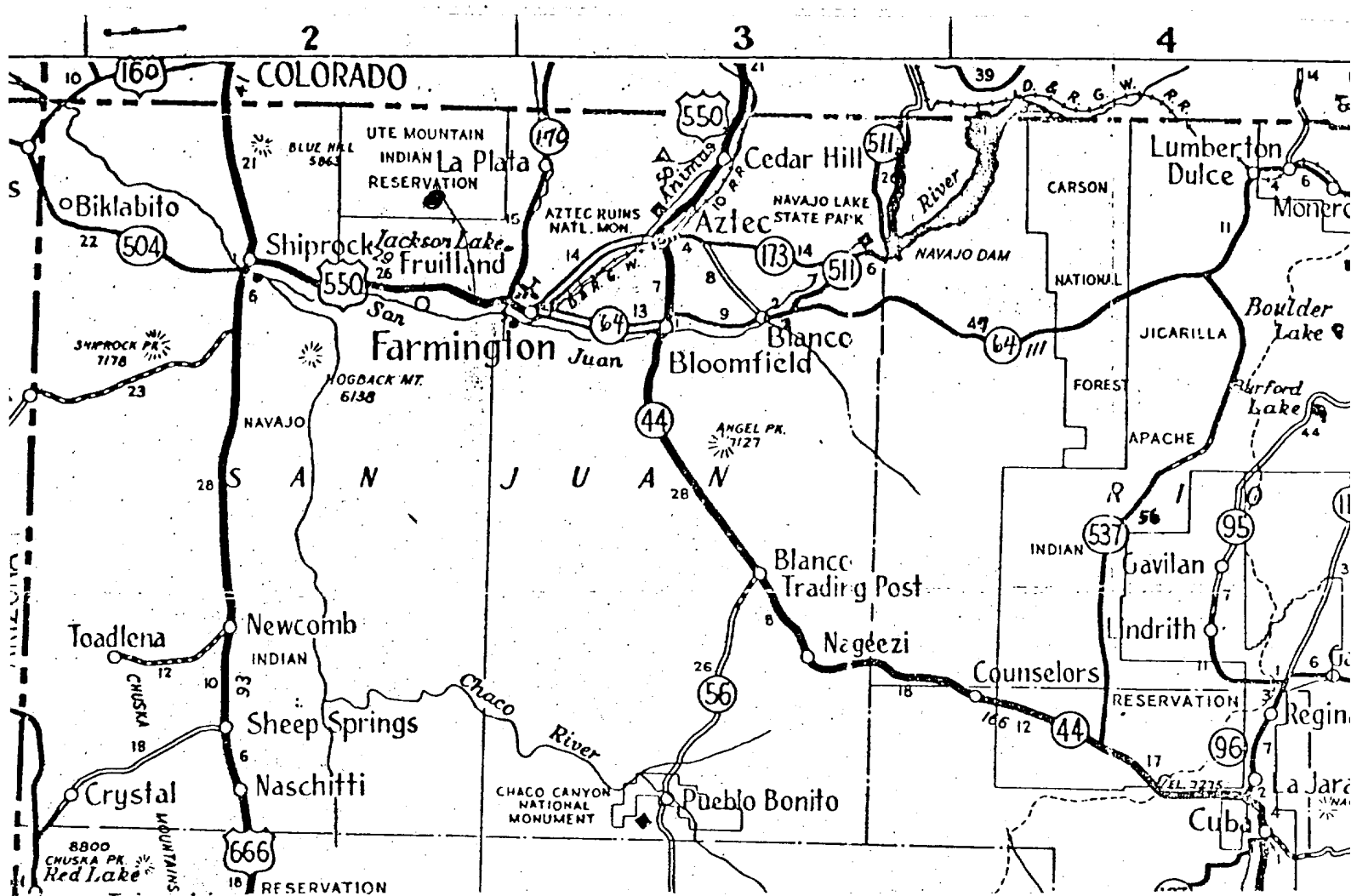
MULTI-POINT SURFACE USE PLAN

MOUNTAIN UTE TRIBAL "B" NO. 1
1160' FNL & 790' FEL, SECTION 26, T-32-N, R-15-W
SAN JUAN COUNTY, NEW MEXICO

1. The attached road map and sketch show the proposed route to the location and distances from towns.
2. A new access road 1.6 miles in length will be constructed into location.
3. Existing oil and gas wells within a two-mile radius of our proposed well have been spotted on the vicinity map.
4. There are no tank battery facilities located at wells within a one-mile radius of the proposed location.
5. Water will be hauled from the San Juan River.
6. No construction material will be hauled in for this location.
7. A pit 75' X 75' will be built on location to hold all drilling waste. Upon completion of well, all waste and liquid will be hauled by truck and bladed into existing roads. All other waste will be covered in pit.
8. There are neither airstrips nor camps in the vicinity.
9. The well site layout, reserve, burn and trash pits are shown on the attached Drill Site Specification Sheet. No cuts will be necessary.
10. Restoration of the surface will be accomplished by cleaning up and leveling upon completion of the well. Drainage ditches will be constructed on upper side. Seeding will be in accordance with instructions from the BIA.
11. The general topography is sandy with cedar and sagebrush cover.

Representatives of the U. S. Geological Survey's Durango Office and Ute Mountain Ute Bureau of Indian Affairs agency inspected the site with Amoco personnel. Cultural resources inspection was conducted by Pam Smith, Archaeologist, from San Juan College.

12. A Certification Statement by Amoco's representative is included.

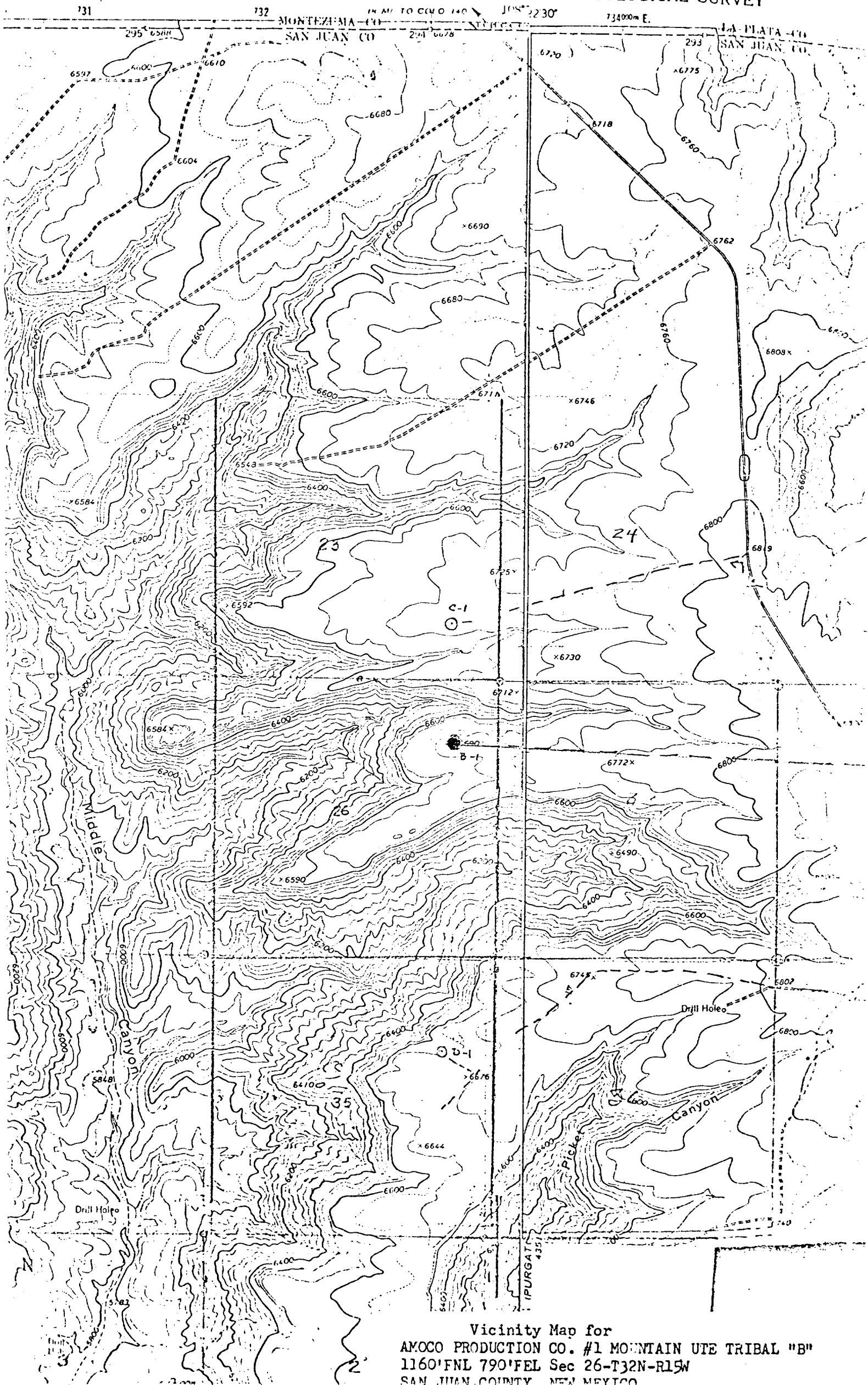


FARMINGTON DISTRICT TRAFFIC SKETCH
 DENVER REGION
 MOUNTAIN UTE TRIBAL "B" NO. 1
 SAN JUAN COUNTY, NEW MEXICO
 AMOCO WI: 100%

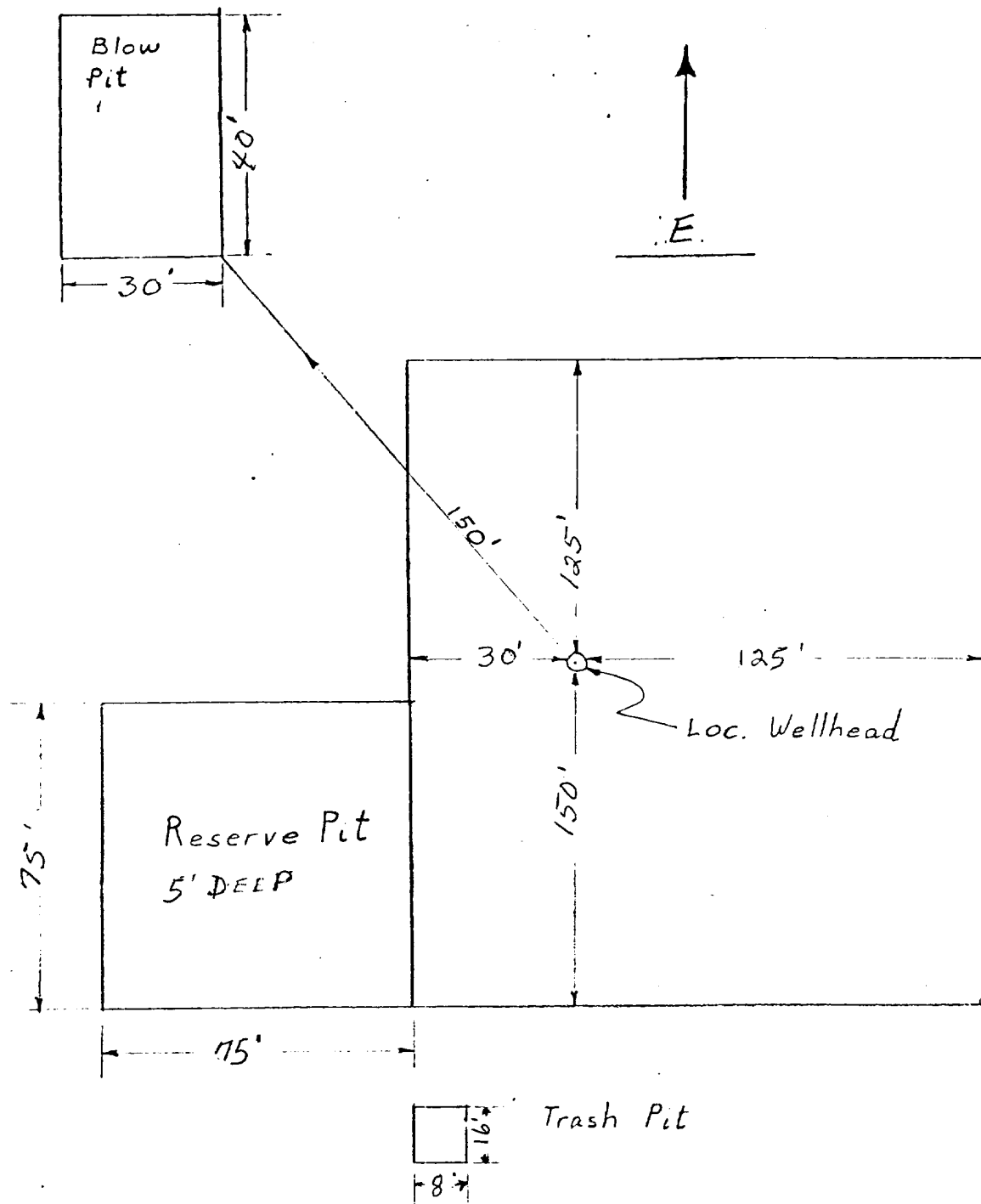
Rail Point, Farmington - 31 miles
 Mud Point, Farmington - 31 miles
 Cement Point, Farmington - 31 miles

4-30-79

4-30-79



Vicinity Map for
AMOCO PRODUCTION CO. #1 MOUNTAIN UTE TRIBAL "B"
1160'FNL 790'FEL Sec 26-T32N-R15W
SAN JUAN COUNTY, NEW MEXICO



Amoco Production Company

SCALE: NONE

DRILLING LOCATION SPECS
MOUNTAIN UTE TRIBAL "B" NO. 1

DRG.
NO.

MOUNTAIN UTE TRIBAL "B" NO. 1
1160' FNL & 790' FEL, SECTION 26, T-32-N, R-15-W
SAN JUAN COUNTY, NEW MEXICO

CERTIFICATION

I hereby certify that I, or persons under my direct supervision, have inspected the proposed drillsite and access route, that I am familiar with the conditions which presently exist; that the statements made in this plan are, to be best of my knowledge, true and correct; and, that the work associated with the operations proposed herein will be performed by AMOCO PRODUCTION
COMPANY and its contractors and sub-contractors in conformity with this plan and the terms and conditions under which it is approved.

May 8, 1979

Date



District Supt.

Name and Title

Amoco Production Company's Representative:

R. W. Schroeder

Phone: Office: 505-325-8841; Home: 505-325-6164.

Address: 501 Airport Drive

Farmington, NM 87401