

UNITED STATES
DEPARTMENT OF THE INTERIOR
BUREAU OF LAND MANAGEMENT

APPLICATION FOR PERMIT TO DRILL, DEEPEN, OR PLUG BACK

1a. TYPE OF WORK

DRILL ☒

DEEPEN ☐

PLUG BACK ☐

b. TYPE OF WELL

OIL
WELL ☒

GAS
WELL ☐

OTHER

SINGLE
ZONE ☒

MULTIPLE
ZONE ☐

2. NAME OF OPERATOR

BAYSTAR PETROLEUM CORPORATION

3. ADDRESS OF OPERATOR

P.O. BOX 2975, CORPUS CHRISTI, TEXAS 784

4. LOCATION OF WELL (Report location clearly and in accordance with any State requirements.)*

At surface

1890/5 1750' fwl & 1890 fs1

At proposed prod. zone

SAME

14. DISTANCE IN MILES AND DIRECTION FROM NEAREST TOWN OR POST OFFICE

12 MILES NORTHEAST OF SHIPROCK, NEW MEXICO

15. DISTANCE FROM PROPOSED*

LOCATION TO NEAREST
PROPERTY OR LEASE LINE, FT.
(Also to nearest drlg. unit line, if any)

750'

18. DISTANCE FROM PROPOSED LOCATION*

TO NEAREST WELL, DRILLING, COMPLETED,
OR APPLIED FOR, ON THIS LEASE, FT.

990'

16. NO. OF ACRES IN LEASE

1920

19. PROPOSED DEPTH

1860'

17. NO. OF ACRES ASSIGNED
TO THIS WELL

40

20. ROTARY OR CABLE TOOLS

ROTARY

21. ELEVATIONS (Show whether DF, RT, GR, etc.)

DRILLING OPERATIONS AUTHORIZED ARE
SUBJECT TO COMPLIANCE WITH ATTACHED
"GENERAL REQUIREMENTS".

5851Gr.

PROPOSED CASING AND CEMENTING PROGRAM

SIZE OF HOLE	SIZE OF CASING	WEIGHT PER FOOT	SETTING DEPTH	QUANTITY OF CEMENT
9"	7"	23#	38'	CEMENT TO SURFACE
6 1/4"	4 1/2"	9.5#	1860'	50 SACKS

See Summary attached

PLAN TO SET 38' OF 7" SURFACE CASING AND CEMENT TO THE SURFACE AND TEST PIPE. DRILL A 6 1/4" HOLE WITH AIR THROUGH THE LOWER GALLUP SANDSTONE TO 1860' AND LOG HOLE. A DRILL STEM TEST MAY THEN BE RUN AND CEMENT WILL BE RUN 300' ABOVE THE PRODUCING ZONE. THE PRODUCTIVE ZONE WILL THEN BE PERFORATED AND FOLLOWED WITH A STIMULATION TREATMENT. NO ABNORMAL PRESSURES OR TEMPERATURES ARE EXPECTED. BLOW OUT PREVENTOR SCHEMATIC IS ATTACHED. DUAL INDUCTION AND COMPENSATED NEUTRON AND DENSITY LOG WILL BE RUN.

ESTIMATED TOPS:

SURFACE

+ 5851' SAND & CLAYS

+ 4111' GALLUP SANDSTONE 1450'

IN ABOVE SPACE DESCRIBE PROPOSED PROGRAM: If proposal is to deepen or plug back, give data on present productive zone and proposed new productive zone. If proposal is to drill or deepen directionally, give pertinent data on subsurface locations and measured and true vertical depths. Give blowout preventer program, if any.

24.

SIGNED

Ronald F. Miller

TITLE

GEOLOGIST

(This space for Federal or State office use)

PERMIT NO.

APPROVAL DATE

APPROVED BY

TITLE

CONDITIONS OF APPROVAL, IF ANY:

OCT 02 1985

M. MILLENBACH
AREA MANAGER

NMOCC

*See Instructions On Reverse Side

**NEW MEXICO OIL CONSERVATION COMMISSION
WELL LOCATION AND ACREAGE DEDICATION PLAT**

Form C-102
Supersedes C-128
Effective 1-1-85

All distances must be from the outer boundaries of the Section.

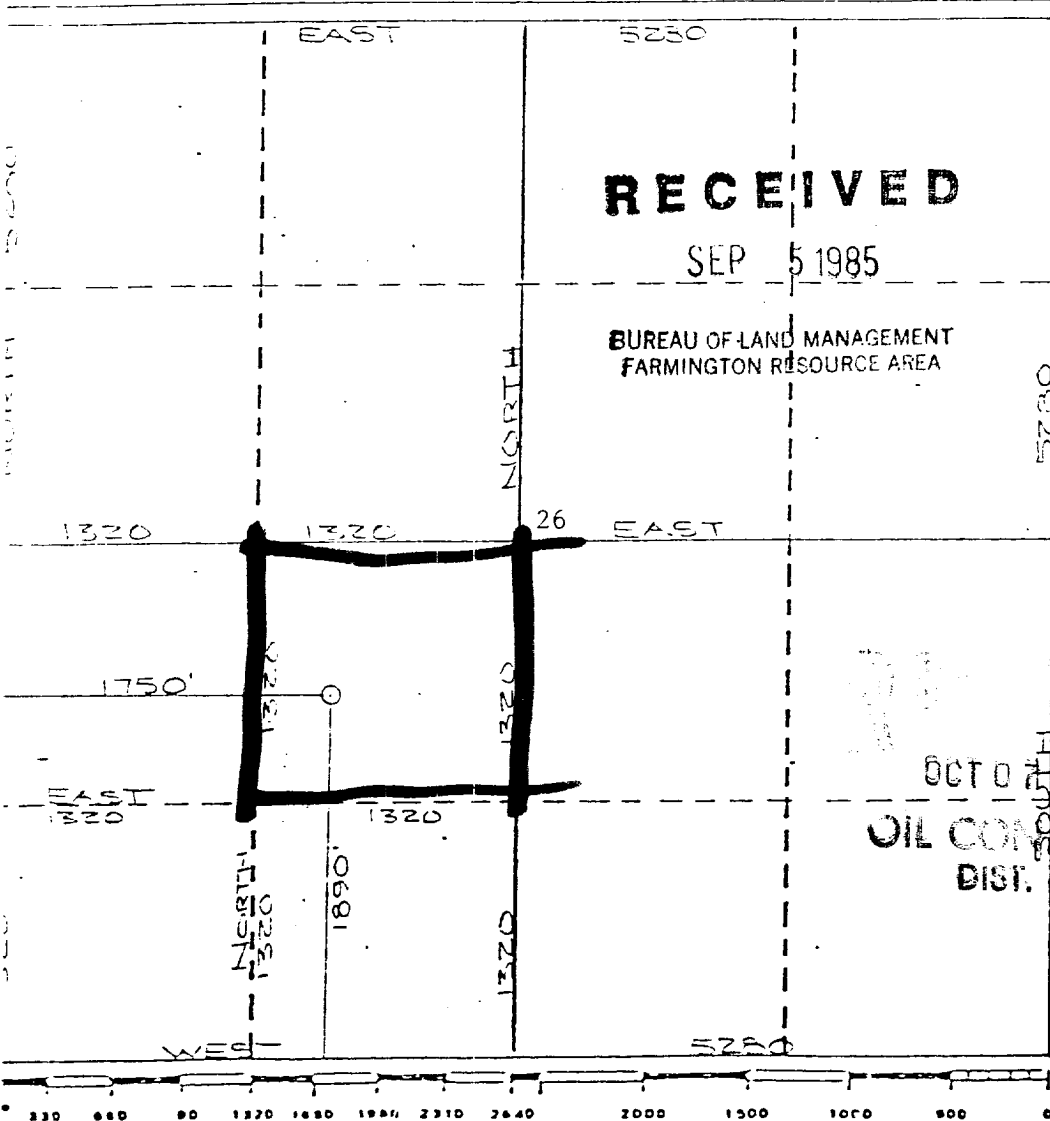
Operator BAYSTAR PETROLEUM CORPORATION			Lease <i>Navajo P</i>		Well No. <i>18</i>
Well Letter K	Section 26	Township 32 NORTH	Range 17 WEST	County SAN JUAN	
Initial Footage Location of Well:					
1890 feet from the SOUTH line and		1750 feet from the WEST line			
Ground Level Elev. 5851	Producing Formation <i>Gallup</i>	Pool <i>Mary Rocks Gallup Ext</i>	Dedicated Acreage: 40 Acres		

1. Outline the acreage dedicated to the subject well by colored pencil or hatchure marks on the plat below.
2. If more than one lease is dedicated to the well, outline each and identify the ownership thereof (both as to working interest and royalty).
3. If more than one lease of different ownership is dedicated to the well, have the interests of all owners been consolidated by communitization, unitization, force-pooling, etc?

☐ Yes ☐ No If answer is "yes," type of consolidation _____

If answer is "no," list the owners and tract descriptions which have actually been consolidated. (Use reverse side of this form if necessary.) _____

No allowable will be assigned to the well until all interests have been consolidated (by communitization, unitization, forced-pooling, or otherwise) or until a non-standard unit, eliminating such interests, has been approved by the Commission.



CERTIFICATION

I hereby certify that the information contained herein is true and complete to the best of my knowledge and belief.

Keith T. Schell

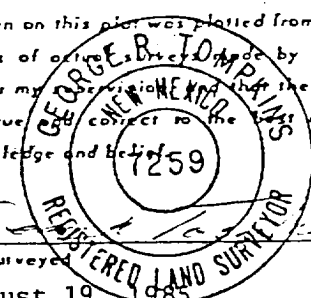
Name
GEOLOGIST

Position
BAYSTAR PETROLEUM CORPORATION

Company
3/9/85

Date

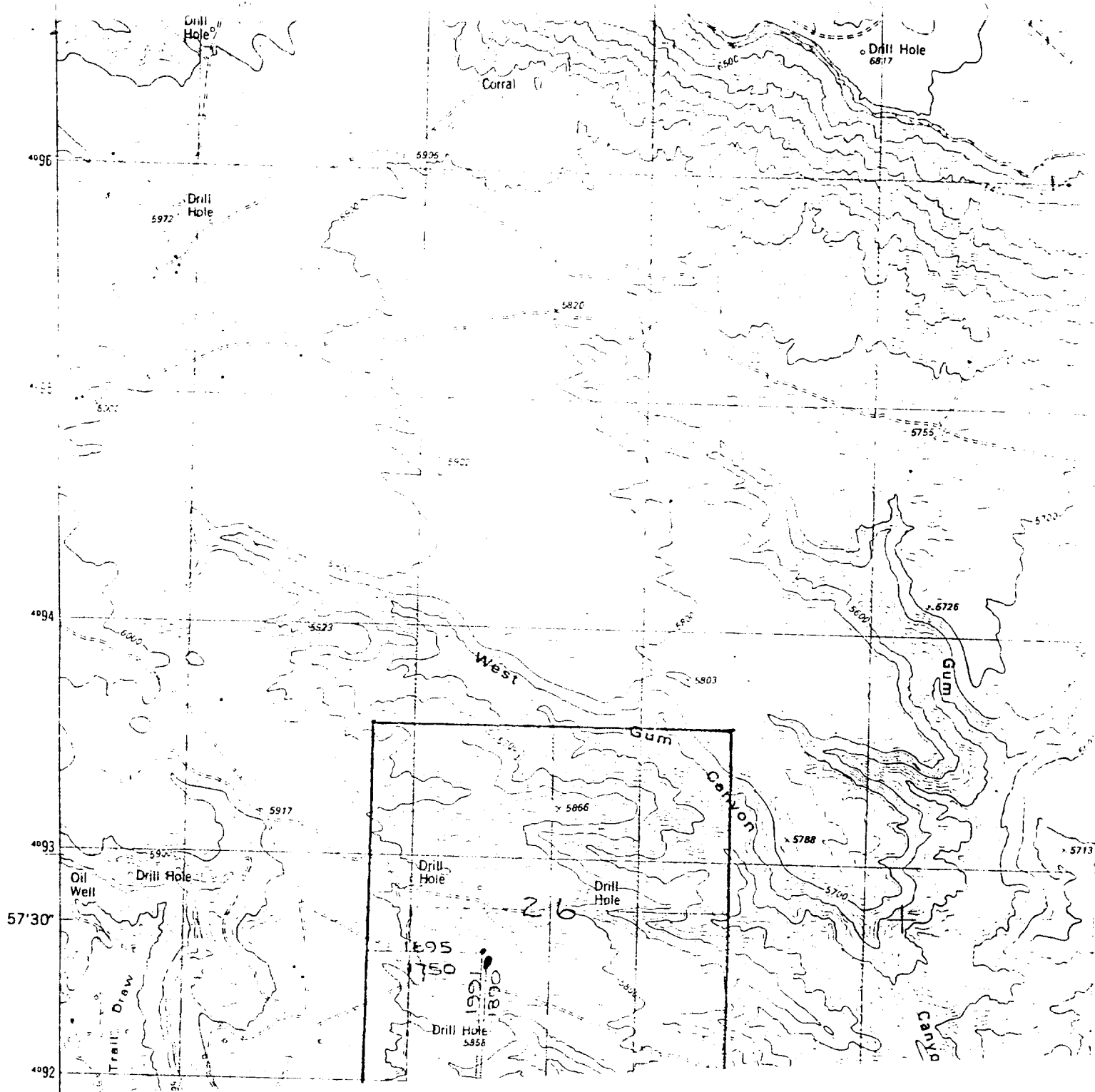
I hereby certify that the well location shown on this plat was plotted from field notes of a well location made by me or under my supervision and that the same is true and correct to the best of my knowledge and belief.



Date Surveyed
August 19, 1985
Registered Professional Engineer
and/or Land Surveyor

George R. Tompkins

Certificate No.
7259



UNITED STATES
DEPARTMENT OF THE INTERIOR
BUREAU OF LAND MANAGEMENT

SUBMIT IN TRIPPLICATE*
(Other instructions on re-
verse side)

Budget Bureau No. 1001-0115
Expires August 31, 1985

5. LEASE DESIGNATION AND SERIAL NO.

14-20-600-3540

6. IF INDIAN, ALLOTTEE OR TRIBE NAME

NAVAJO

7. UNIT AGREEMENT NAME

8. FARM OR LEASE NAME

NAVAJO P

9. WELL NO.

#18

10. FIELD AND POOL, OR WILDCAT

MANY ROCKS- GALLUP EX

11. SEC., T., R., M., OR BLK. AND
SURVEY OR AREA

Sec. 26, T32N, R17W

12. COUNTY OR PARISH

San Juan

13. STATE

New Mexico

1.

OIL WELL ☒ GAS WELL ☐ OTHER

2. NAME OF OPERATOR

BAYSTAR PETROLEUM CORPORATION

3. ADDRESS OF OPERATOR

P.O. BOX 2975, CORPUS CHRISTI, TEXAS 78403

4. LOCATION OF WELL (Report location clearly and in accordance with any State requirements. See also space 17 below.)

At surface

1750'fwl and 1890fsl

SEP 16 1985

BUREAU OF LAND MANAGEMENT

CANWINGTON RESOURCE AREA

14. PERMIT NO.

15. ELEVATIONS (Show whether on or off resource area)

5851Gr.

16. Check Appropriate Box To Indicate Nature of Notice, Report, or Other Data

NOTICE OF INTENTION TO:

TEST WATER SHUT-OFF

FRACTURE TREAT

SHOOT OR ACIDIZE

REPAIR WELL

(Other)

PULL OR ALTER CASING

MULTIPLE COMPLETE

ABANDON*

CHANGE PLANS

XX

SUBSEQUENT REPORT OF:

WATER SHUT-OFF

FRACTURE TREATMENT

SHOOTING OR ACIDIZING

(Other)

REPAIRING WELL

ALTERING CASING

ABANDONMENT*

(Note: Report results of multiple completion on Well Completion or Reconpletion Report and Log form.)

17. DESCRIBE PROPOSED OR COMPLETED OPERATIONS (Clearly state all pertinent details, and give pertinent dates, including estimated date of starting any proposed work. If well is directionally drilled, give subsurface locations and measured and true vertical depths for all markers and zones pertinent to this work.)*

THIS SUNDRY NOTICE IS TO CORRECT THE DEFICIENT PORTIONS OF APD RECEIVED SEPTEMBER 5, 1985 (LEASE #14-20-600-3540 WELL P-#18). 90' OF SURFACE CASING J-55 WILL BE RUN. IT WILL BE CEMENTED TO THE SURFACE (31.6 cu/ft) WITH 27 SACKS OF CLASS B CEMENT WITH 2% CaCl AND 1/2# FLOW SEAL AT 15#/GAL. IF WELL APPEARS PRODUCTIVE 4 1/2" J-55 LONGSTRING WILL BE RUN. IT WILL BE CEMENTED WITH 50 SACKS 50-50 POZ WITH 2% GEL, 10% SALT AND 10% CALCIUM AT 13.5#/GAL. TOTALING 70CU/FT AND ESTIMATED CEMENT TOP OF 1,178'.

RECEIVED
OCT 07 1985
OIL CON. DIV. 1
DIST. 3

18. I hereby certify that the foregoing is true and correct

SIGNED

TITLE

GEOLOGIST

(This space for Federal or State office use)

APPROVED 09/13/85
AS AMENDED

APPROVED BY

TITLE

CONDITIONS OF APPROVAL, IF ANY:

OCT 07 1985

M. MILLENBACH
AREA MANAGER

*See Instructions on Reverse Side

NMOCC