

**NEW MEXICO OIL CONSERVATION COMMISSION
WELL LOCATION AND ACREAGE DEDICATION PLAT**

Form C-102
Supersedes C-121
Effective 1-1-83

All distances must be from the outer boundaries of the Section.

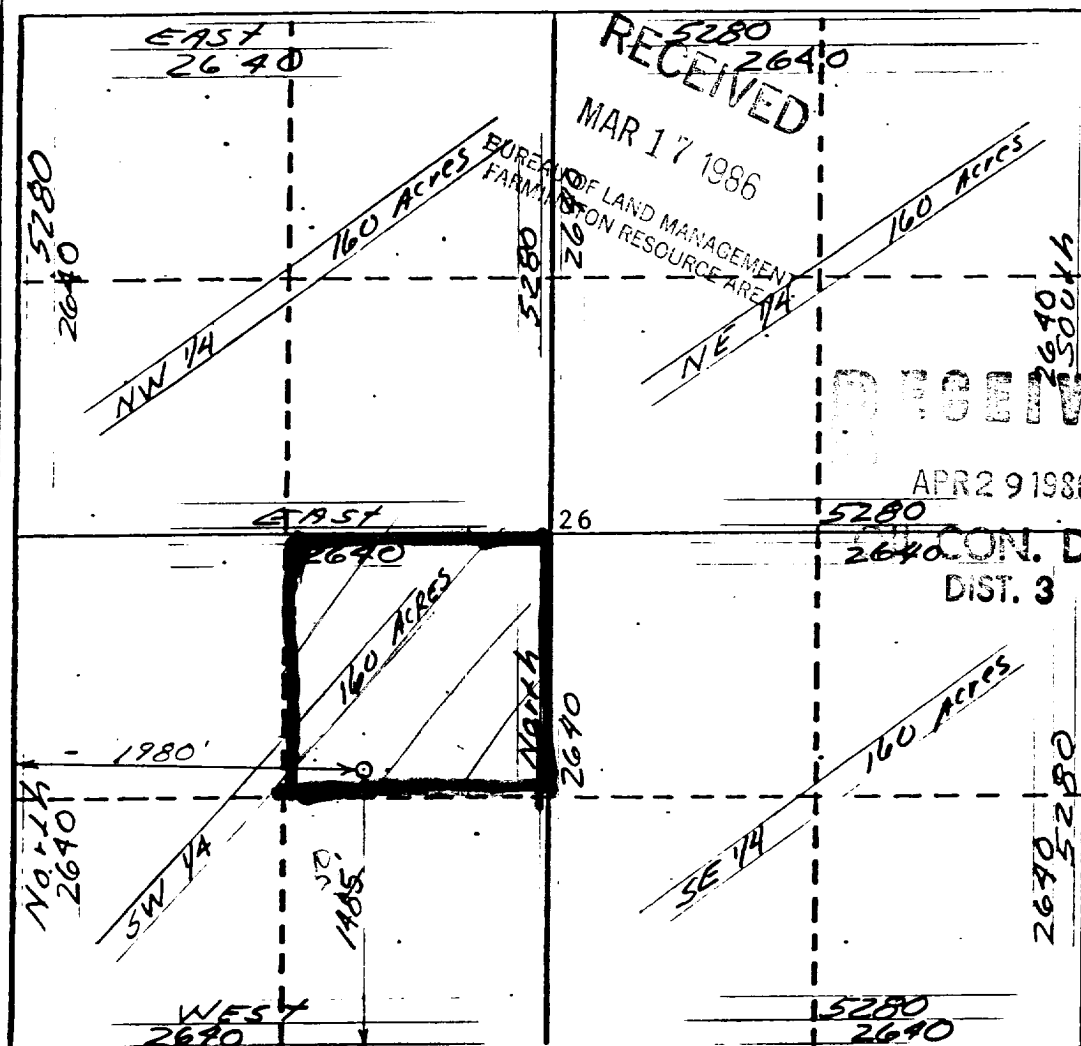
Operator JOHN H. HILL CO. <i>Baystar Petroleum</i>		Lease NAVAJO "P"		Well No. 19
Unit Letter K	Section 26	Township 32 NORTH	Range 17 WEST	County SAN JUAN
Actual Footage Location of Wells <div style="display: flex; justify-content: space-between;"> 1485 feet from the SOUTH line and 1980 feet from the WEST line </div>				
Ground Level Elev. 5857	Producing Formation GALLUP	Pool MANY ROCKS EXT	Dedicated Acreage 40 Acres	

1. Outline the acreage dedicated to the subject well by colored pencil or hatchure marks on the plat below.
2. If more than one lease is dedicated to the well, outline each and identify the ownership thereof (both as to working interest and royalty).
3. If more than one lease of different ownership is dedicated to the well, have the interests of all owners been consolidated by communitization, unitization, force-pooling, etc?

☐ Yes ☐ No If answer is "yes," type of consolidation _____

If answer is "no," list the owners and tract descriptions which have actually been consolidated. (Use reverse side of this form if necessary.) _____

No allowable will be assigned to the well until all interests have been consolidated (by communitization, unitization, forced-pooling, or otherwise) or until a non-standard unit, eliminating such interests, has been approved by the Commission.



CERTIFICATION

I hereby certify that the information contained herein is true and complete to the best of my knowledge and belief.

William W. Jenkins

Name
Engineer

Position
BAYSTAR Petroleum

Date
2/13/86

I hereby certify that the well location shown on this plat was plotted from field notes of actual surveys made by me or under my supervision, and that the same is true and correct to the best of my knowledge and belief.

George R. Tompkins

Date Surveyed
February 6, 1986
Registered Professional Engineer
and/or Land Surveyor

George R. Tompkins

Certificate No.
7259