

UNITED STATES
DEPARTMENT OF THE INTERIOR
BUREAU OF LAND MANAGEMENT

APPLICATION FOR PERMIT TO DRILL, DEEPEN, OR PLUG BACK

1a. TYPE OF WORK

DRILL ☒

REDEEPE

PLUG BACK ☐

b. TYPE OF WELL

OIL
WELL ☒

GAS
WELL ☐

OTHER

SINGLE
ZONE ☒

MULTIPLE
ZONE ☐

2. NAME OF OPERATOR

BAYSTAR PETROLEUM

3. ADDRESS OF OPERATOR

17400 Dallas Parkway, Suite 210, Dallas, Texas 75252

4. LOCATION OF WELL (Report location clearly and in accordance with any State requirements.)*

At surface

1980' FWL & 840' FNL, Sec. 36-T32N-R17W

At proposed prod. zone

1980' FWL & 840' FNL, Sec. 36-T32N-R17W

14. DISTANCE IN MILES AND DIRECTION FROM NEAREST TOWN OR POST OFFICE*

12.5 miles NE from Shiprock, New Mexico

15. DISTANCE FROM PROPOSED*

LOCATION TO NEAREST
PROPERTY OR LEASE LINE, FT.
(Also to nearest drig. unit line, if any)

840'

16. NO. OF ACRES IN LEASE

1920

17. NO. OF ACRES ASSIGNED
TO THIS WELL

40

18. DISTANCE FROM PROPOSED LOCATION*

TO NEAREST WELL, DRILLING, COMPLETED,
OR APPLIED FOR, ON THIS LEASE, FT.

5717'

19. PROPOSED DEPTH

1400'

20. ROTARY OR CABLE TOOLS

Rotary

21. ELEVATIONS (Show whether DF, RT, GR, etc.)

5385' GR SUBJECT TO COMPLIANCE WITH ATTACHED

22. APPROX. DATE WORK WILL START*

When approved

23. "GENERAL REQUIREMENTS" AND CEMENTING PROGRAM

SIZE OF HOLE	SIZE OF CASING	WEIGHT PER FOOT	SETTING DEPTH
9"	7"	J-55; 23#	90'
6 3/4"	4 1/2"	J-55; 9.5#	1400'

This action is subject to technical and
procedural review pursuant to 43 CFR 3160.3,
and appeal pursuant to 43 CFR 3160.4.
35 sks Circ. to surface
50 sks

Drill 9" hole and set 90' of 7", 23#/ft. surface casing cement to surface. Wait 8 hours; nipple blow-out preventors and test to 2000 psi. Drill 6 3/4" hole with air through Gallup Sandstone. At total depth run Compensated Density log with Induction log. If feasible, run 4 1/2" casing to total depth, cement with 50 sks of 50/50 POZ, mix cement. Perforate zone at 2 shots per foot and fracture stimulate if feasible. Top of Gallup is expected at 1274'. Total Depth of well - 1400'. Cement specifications of surface pipe job: 35 sks class -B- with 2% CaCl at 1/2# flow seal slurry wt. 15#/gal. Cement specification of production string: 50 sks; 50/50 POZ mix with 2% gel, 10% salt and 10% CaCl, slurry wt. 13.5#/gal. Calculated top of cement 1113' from surface (50% fill up).

RECEIVED
APR 29 1986

IN ABOVE SPACE DESCRIBE PROPOSED PROGRAM: If proposal is to deepen or plug back, give data on present production zone and proposed new productive zone. If proposal is to drill or deepen directionally, give pertinent data on subsurface locations and measured and true vertical depths. Give blowout preventer program, if any.

24.

SIGNED

William Yach

TITLE

Engineer

DATE

3/3/86

(This space for Federal or State office use)

"Approval of this action does
not warrant that the applicant
holds legal or equitable rights
or title to this lease."

APPROVAL DATE

TITLE

NMOCC

APPROVED
AS AMENDED
APR 25 1986

/s/ J. Stan McKee

ACTING AREA MANAGER

*See Instructions On Reverse Side

**NEW MEXICO OIL CONSERVATION COMMISSION
WELL LOCATION AND ACREAGE DEDICATION PLAT**

Form C-102
Supersedes C-121
Effective 1-1-83

All distances must be from the outer boundaries of the Section.

Operator JOHN H. HILL CO. <i>Bayslar Petroleum</i>			Lease NAVAJO "P"		Well No. 20
Unit Letter C	Section 36	Township 32 NORTH	Range 17 WEST	County SAN JUAN	

Actual Footage Location of Wells:

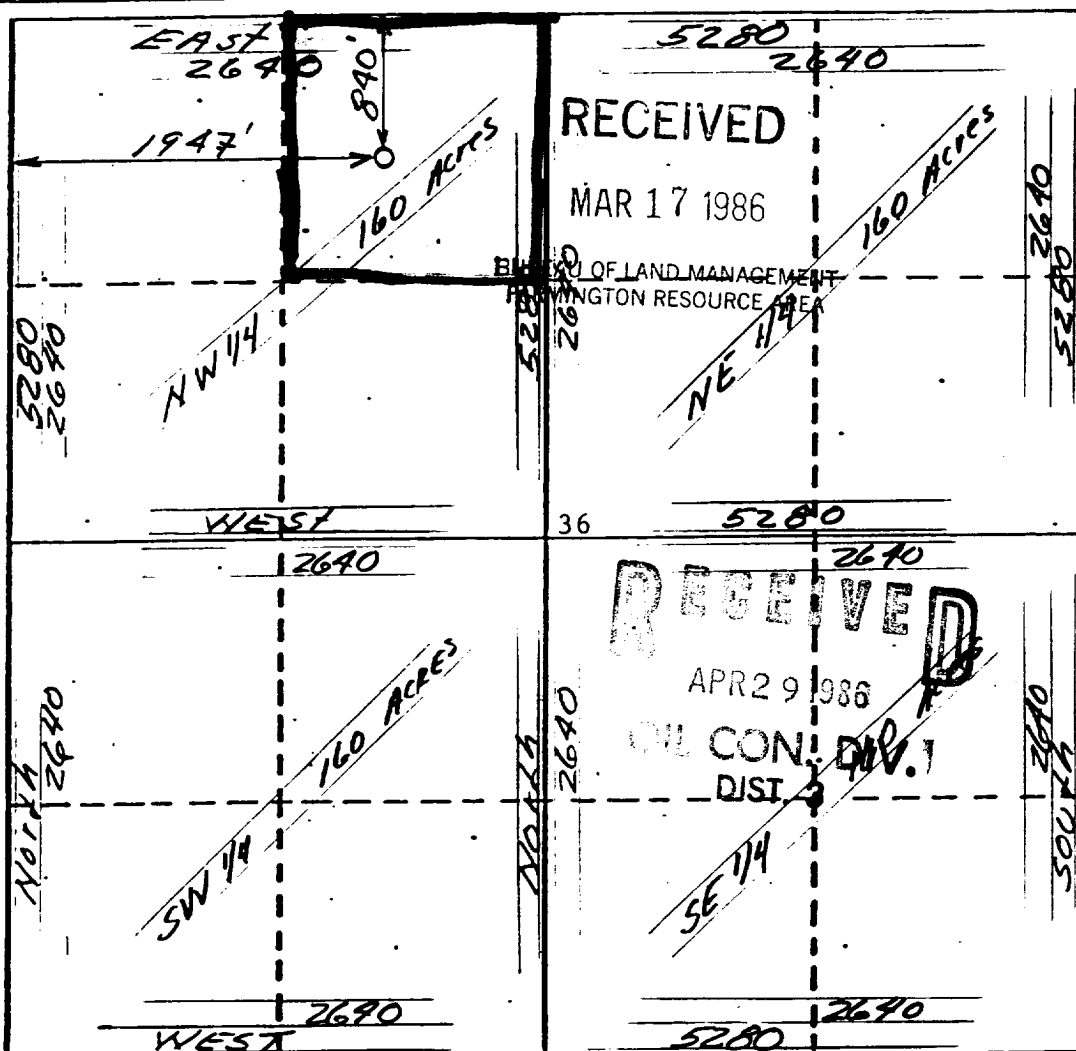
840 feet from the NORTH line and 1947 feet from the WEST line	
Ground Level Elev. 5385	Producing Formation <i>Gallup</i>
Pool MANY ROCKS - GALLUP EXT	Dedicated Acreage 40 Acres

1. Outline the acreage dedicated to the subject well by colored pencil or hatchure marks on the plat below.
2. If more than one lease is dedicated to the well, outline each and identify the ownership thereof (both as to working interest and royalty).
3. If more than one lease of different ownership is dedicated to the well, have the interests of all owners been consolidated by communitization, unitization, force-pooling, etc?

☐ Yes ☐ No If answer is "yes," type of consolidation _____

If answer is "no," list the owners and tract descriptions which have actually been consolidated. (Use reverse side of this form if necessary.) _____

No allowable will be assigned to the well until all interests have been consolidated (by communitization, unitization, forced-pooling, or otherwise) or until a non-standard unit, eliminating such interests, has been approved by the Commission.



CERTIFICATION

I hereby certify that the information contained herein is true and complete to the best of my knowledge and belief.

Wilbur Jacobs

Name
Engineer

Position
BAYSAR Petroleum Co.

Company

Date
3/3/86

I hereby certify that the well location shown on this plat was plotted from field notes of actual surveys made by me or under my supervision, and that the same is true and correct to the best of my knowledge and belief.

George R. Tompkins

Date Surveyed
February 3, 1986

Registered Professional Engineer and/or Land Surveyor

George R. Tompkins

Certificate No.
.7259