

Submit to Appropriate
District Office
State Lease - 6 copies
Fee Lease - 5 copies

State of New Mexico
Energy, Minerals and Natural Resources Department

Form C-101
Revised 1-1-89

DISTRICT I
P.O. Box 1980, Hobbs, NM 88240

DISTRICT II
P.O. Drawer DD, Artesia, NM 88210

DISTRICT III
1000 Rio Brazos Rd., Aztec, NM 87410

OIL CONSERVATION DIVISION
P.O. Box 2088
Santa Fe, New Mexico 87504-2088
JAN 9 1990

OIL CON. DIV

API NO. (assigned by OCD on New Wells)

30-045-27577

5. Indicate Type of Lease

STATE ☐

FEE ☒

6. State Oil & Gas Lease No.

APPLICATION FOR PERMIT TO DRILL, DEEPEN, OR PLUG BACK

1a. Type of Work:

DRILL ☒

RE-ENTER ☐

DEEPEN ☐

PLUG BACK ☐

b. Type of Well:

OIL
WELL ☐

GAS
WELL ☒

OTHER

SINGLE
ZONE ☒

MULTIPLE
ZONE ☐

7. Lease Name or Unit Agreement Name

Ripley N2

8. Well No.

N2-26

9. Pool name or Wildcat

Basin Fruitland Coal

2. Name of Operator

Quinoco Petroleum, INC.

3. Address of Operator

PO Box 37811 Denver, CO 80237

4. Well Location

Unit Letter

N

: 815

Feet From The South

Line and

1450

Feet From The West

Line

Section 26

Township

32N

Range

13W

NMPM San Juan

County

10. Proposed Depth

2405

11. Formation

Fruitland

12. Rotary or C.T.

Rotary

13. Elevations (Show whether DF, RT, GR, etc.)

5937 Gr

14. Kind & Status Plug Bond

National Blanket

15. Drilling Contractor

16. Approx. Date Work will start

2/15/90

17.

PROPOSED CASING AND CEMENT PROGRAM

SIZE OF HOLE	SIZE OF CASING	WEIGHT PER FOOT	SETTING DEPTH	SACKS OF CEMENT	EST. TOP
12 1/4	8 5/8	28	300	210sxs B	Surface
7 7/8	5 1/2	17	2405	210sxs 65/35	
				142sxs B	Surface

Quinoco Petroleum, INC. wishes to advise that we intend to drill a 12 1/4" hole with spud mud to 300' and set 8 5/8", 28.0#, K-55 ST&C casing to 300' cementing to surface with 210 sxs (248 cu ft) Class B cement with 2% CaCl2. Wait on cement 12 hours. Nipple up and test BOP. Drill 7 7/8" hole out of surface to 2405' with mud. Log well. Set 5 1/2", 17.0#, J-55 ST&C production casing to 2405' cementing to surface with 210 sxs (387 cu ft) 65/35 POZ with 6% gel and 12 1/4# gilsonite/sk, tailed by 142 sxs (168 cu ft) Class B cement with 2% CaCl2. Perforate pay section in the Fruitland Coal, acidize perforations and frac with 100,000# sand in 65,000 gal 30# cross linked gel. Clean up well and install standard production equipment. Test well to reserve pit for a period not to exceed 30 days. Connect well to a gathering system.

IN ABOVE SPACE DESCRIBE PROPOSED PROGRAM: IF PROPOSAL IS TO DEEPEN OR PLUG BACK, GIVE DATA ON PRESENT PRODUCTIVE ZONE AND PROPOSED NEW PRODUCTIVE ZONE. GIVE BLOWOUT PREVENTER PROGRAM, IF ANY.

I hereby certify that the information above is true and complete to the best of my knowledge and belief.

SIGNATURE

Robert C. Frank

TITLE Agent

DATE 1/15/90

TYPE OR PRINT NAME

Robert C. Frank

TELEPHONE NO. 326-1962

(This space for State Use)

APPROVED BY

Emilio Bursch

TITLE

DEPUTY OIL & GAS INSPECTOR, DIST. #3 JAN 19 1990

CONDITIONS OF APPROVAL, IF ANY:

Held C-104 For CA

APPROVAL EXPIRES 2-19-90
UNLESS DRILLING IS COMMENCED.
SPUD NOTICE MUST BE SUBMITTED
WITHIN 10 DAYS

Submit to Appropriate
District Office
State Lease - 4 copies
Fee Lease - 3 copies

State of New Mexico
Energy, Minerals and Natural Resources Department

Form C-102
Revised 1-1-89

RECEIVED

JAN 19 1990

OIL CONSERVATION DIVISION

P.O. Box 2088
Santa Fe, New Mexico 87504-2088

OIL CON. DIV
DIST. 3

DISTRICT I
P.O. Box 1980, Hobbs, NM 88240

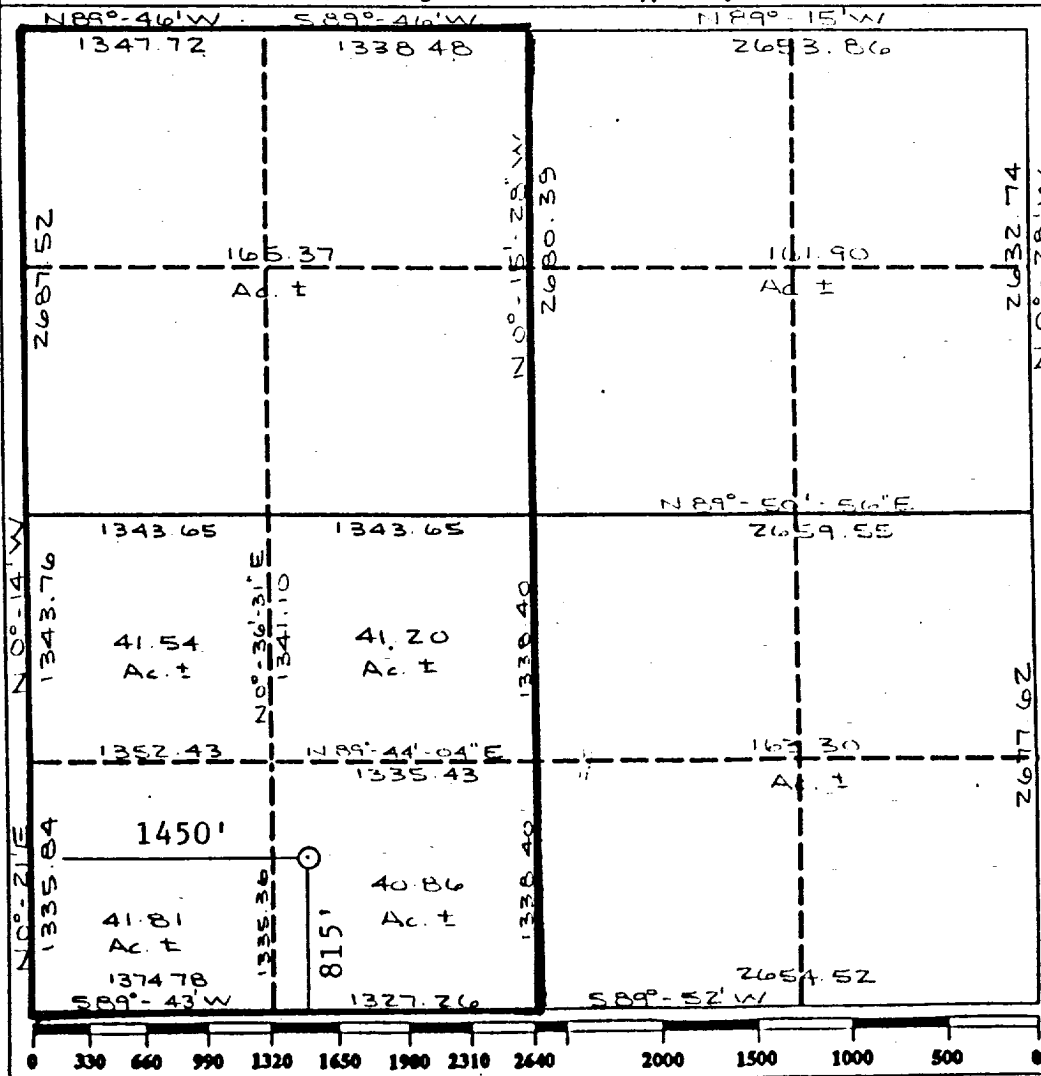
DISTRICT II
P.O. Drawer DD, Artesia, NM 88210

DISTRICT III
1000 Rio Brazos Rd., Aztec, NM 87410

WELL LOCATION AND ACREAGE DEDICATION PLAT
All Distances must be from the outer boundaries of the section

Operator QUINOCO <i>Pet, Inc.</i>			Lease RIPLEY <i>N2</i>		Well No. <i>N2-26</i>
Unit Letter N	Section 26	Township 32N	Range 13W	County NMPM	San Juan
Actual Footage Location of Well: 815 feet from the South line and 1450 feet from the West line					
Ground level Elev. 5937	Producing Formation Fruitland	Pool Basin Fruitland Coal	Dedicated Acreage: <i>W/2</i> <i>330.78</i> Acres		

- Outline the acreage dedicated to the subject well by colored pencil or hatchure marks on the plat below. *320*
- If more than one lease is dedicated to the well, outline each and identify the ownership thereof (both as to working interest and royalty).
- If more than one lease of different ownership is dedicated to the well, have the interest of all owners been consolidated by communitization, unitization, force-pooling, etc.?
☐ Yes ☒ No If answer is "yes" type of consolidation *Being communitized*
If answer is "no" list the owners and tract descriptions which have actually been consolidated. (Use reverse side of this form if necessary.)
No allowable will be assigned to the well until all interests have been consolidated (by communitization, unitization, forced-pooling, or otherwise) or until a non-standard unit, eliminating such interest, has been approved by the Division.



OPERATOR CERTIFICATION

I hereby certify that the information contained herein is true and complete to the best of my knowledge and belief.

Signature *Robert C. Frank*
Printed Name Robert C. Frank
Position Agent
Company Quinoco Petroleum, INC
Date January 10, 1990

SURVEYOR CERTIFICATION

I hereby certify that the well location shown on this plat was plotted from field notes of actual surveys made by me or under my supervision, and that the same is true and correct to the best of my knowledge and belief.

Date Surveyed December 18, 1989
Signature & Seal of Professional Surveyor

Certificate No. *9672*
REGISTERED PROFESSIONAL LAND SURVEYOR