

Submit to Appropriate
District Office
State Lease - 6 copies
Fee Lease - 5 copies

State of New Mexico
Energy, Minerals and Natural Resources Department

Form C-101
Revised 1-1-89

DISTRICT I
P.O. Box 1980, Hobbs, NM 88240

DISTRICT II
P.O. Drawer DD, Artesia, NM 88210

DISTRICT III
1000 Rio Brazos Rd., Aztec, NM 87410

RECEIVED
OIL CONSERVATION DIVISION
P.O. Box 2088
Santa Fe, New Mexico 87504-2088
FEB 02 1990
OIL CON. DIV
DIST. 3

API NO. (assigned by OCD on New Wells)
30-045-27586
5. Indicate Type of Lease STATE <input checked="" type="checkbox"/> FEE <input type="checkbox"/>
6. State Oil & Gas Lease No. E-8445

APPLICATION FOR PERMIT TO DRILL, DEEPEN, OR PLUG BACK					
1a. Type of Work: DRILL <input checked="" type="checkbox"/> RE-ENTER <input type="checkbox"/> DEEPEN <input type="checkbox"/> PLUG BACK <input type="checkbox"/>					
b. Type of Well: OIL WELL <input type="checkbox"/> GAS WELL <input checked="" type="checkbox"/> OTHER <input type="checkbox"/> SINGLE ZONE <input checked="" type="checkbox"/> MULTIPLE ZONE <input type="checkbox"/>					
2. Name of Operator Quinoco Petroleum, INC.					
3. Address of Operator PO Box 378111 Denver, CO 80237					
4. Well Location Unit Letter L : 2500 Feet From The South Line and 1290 Feet From The West Line Section 36 Township 32N Range 13W NMPM San Juan County					
10. Proposed Depth 2290'		11. Formation Fruitland		12. Rotary or C.T. Rotary	
13. Elevations (Show whether DF, RT, GR, etc.) 5831 Gr		14. Kind & Status Plug. Bond National Blanket		15. Drilling Contractor	
16. Approx. Date Work will start 3/1/90					
17. PROPOSED CASING AND CEMENT PROGRAM					
SIZE OF HOLE	SIZE OF CASING	WEIGHT PER FOOT	SETTING DEPTH	SACKS OF CEMENT	EST. TOP
12 1/4	8 5/8	28	300'	210 sxs B	Surface
7 7/8	5 1/2	17	2290'	200sxs 65/35	
				142 sxs B	Surface

Quinoco Petroleum, INC. wishes to advise that we intend to drill a 12 1/4" hole with spud mud to 300' and set 8 5/8", 28.0#, K-55 ST&C casing to 300' cementing to surface with 210 sxs (248 cu ft) Class B cement with 2% CaCl₂. Wait on cement 12 hours. Nipple up and test BOP. Drill 7 7/8" hole out of surface to 2290' with mud. Log well. Set 5 1/2", 17.0#, J-55 ST&C production casing to 2290' cementing to surface with 200 sxs (368 cu ft) 65/35 POZ with 6% gel and 12 1/4# gilsonite/sk, tailed by 142 sxs (168 cu ft) Class B cement with 2% CaCl₂. Perforate pay section in the Fruitland Coal, acidize perforations and frac with 100,000# sand in 65,000 gal 30# cross linked gel. Clean up well and install standard production equipment. Test well to reserve pit for a period not to exceed 30 days. Connect well to a gathering system.

IN ABOVE SPACE DESCRIBE PROPOSED PROGRAM: IF PROPOSAL IS TO DEEPEN OR PLUG BACK, GIVE DATA ON PRESENT PRODUCTIVE ZONE AND PROPOSED NEW PRODUCTIVE ZONE. GIVE BLOWOUT PREVENTER PROGRAM, IF ANY.

I hereby certify that the information above is true and complete to the best of my knowledge and belief.

SIGNATURE Robert C. Frank TITLE Agent DATE 1/31/90
TYPE OR PRINT NAME Robert C. Frank TELEPHONE NO. 326-1962

(This space for State Use)

APPROVED BY Ernie B. Bush TITLE DEPUTY OIL & GAS INSPECTOR, DIST #3 DATE FEB 05 1990
CONDITIONS OF APPROVAL, IF ANY:

Held C-104 for CR

APPROVAL EXPIRES 7-5-90
UNLESS DRILLING IS COMMENCED.
SPUD NOTICE MUST BE SUBMITTED
WITHIN 10 DAYS.

Submit to Appropriate
District Office
State Lease - 4 copies
Fee Lease - 3 copies

State of New Mexico
Energy, Minerals and Natural Resources Department

OIL CONSERVATION DIVISION

P.O. Box 2088
Santa Fe, New Mexico 87504-2088

Form C-102
RECEIVED

FEB 02 1990

**OIL CON. DIV
DIST. 3**

DISTRICT I
P.O. Box 1980, Hobbs, NM 88240

DISTRICT II
P.O. Drawer DD, Artesia, NM 88210

DISTRICT III
1000 Rio Brazos Rd., Aztec, NM 87410

WELL LOCATION AND ACREAGE DEDICATION PLAT

All Distances must be from the outer boundaries of the section

Operator QUINOCO			Lease PAN AM STATE 42		Well No. 42-36
Unit Letter L	Section 36	Township 32N	Range 13W	County San Juan	
Actual Footage Location of Well: 2500 feet from the South line and 1290 feet from the West line					
Ground level Elev. 5831	Producing Formation Fruitland		Pool Basin Fruitland Coal		Dedicated Acreage: 323.01 W/2 Acres

1. Outline the acreage dedicated to the subject well by colored pencil or hatchure marks on the plat below.

2. If more than one lease is dedicated to the well, outline each and identify the ownership thereof (both as to working interest and royalty).

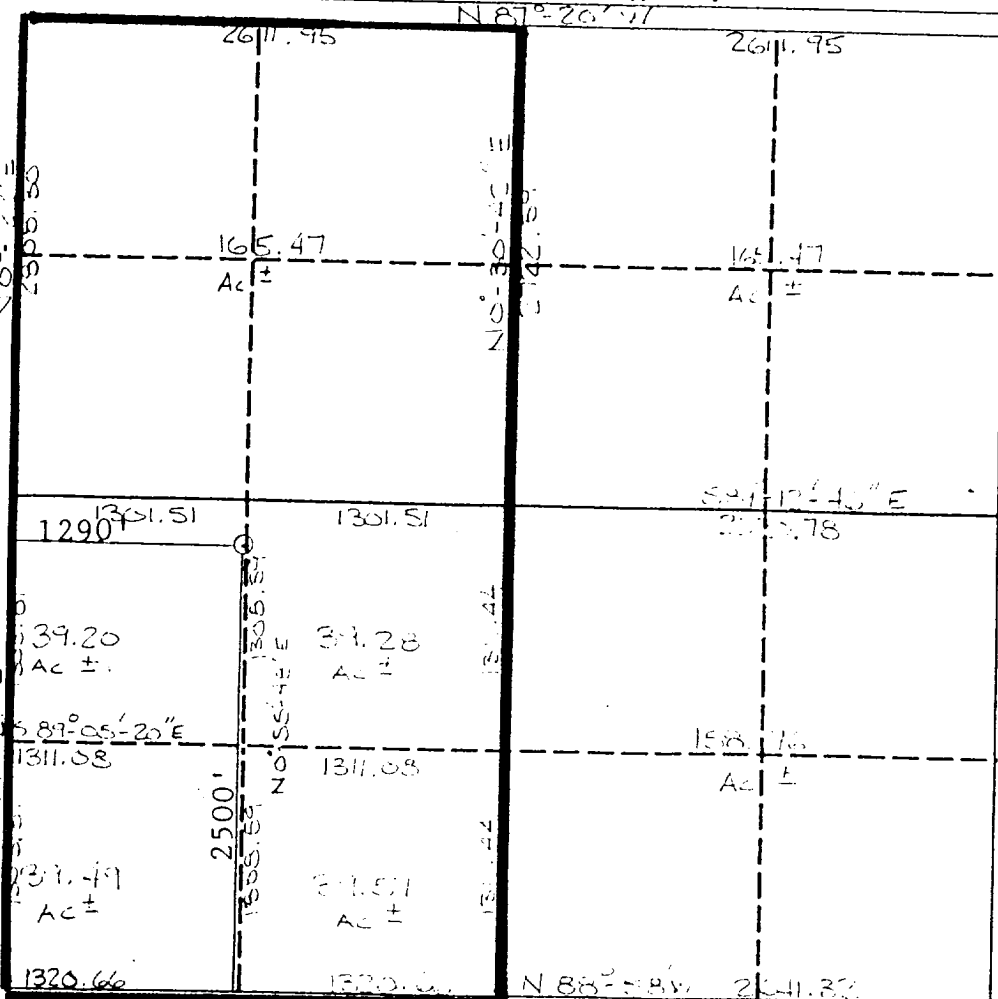
3. If more than one lease of different ownership is dedicated to the well, have the interest of all owners been consolidated by communization, unitization, force-pooling, etc.?

☐ Yes ☒ No

If answer is "yes" type of consolidation Being Communized

If answer is "no" list the owners and tract descriptions which have actually been consolidated. (Use reverse side of this form if necessary.)

No allowable will be assigned to the well until all interests have been consolidated (by communization, unitization, forced-pooling, or otherwise) or until a non-standard unit, eliminating such interest, has been approved by the Division.



OPERATOR CERTIFICATION

I hereby certify that the information contained herein is true and complete to the best of my knowledge and belief.

Signature Robert C. Frank

Printed Name
Robert C. Frank

Position

Agent

Company

Quinoco Petroleum INC

Date

January 31, 1990

SURVEYOR CERTIFICATION

I hereby certify that the well location shown on this plat was plotted from field notes of actual surveys made by me or under my supervision, and that the same is true and correct to the best of my knowledge and belief.

Date Surveyed
January 26, 1990

Signature of Surveyor
GIL B. TULL

Professional Surveyor

REGISTERED PROFESSIONAL SURVEYOR

Certificate No.

9672

LAND SURVEYOR

9672

9672