

Submit to Appropriate  
District Office  
State Lease - 6 copies  
Fee Lease - 5 copies

State of New Mexico  
Energy, Minerals and Natural Resources Department

Form C-101  
Revised 1-1-89

DISTRICT I  
P.O. Box 1980, Hobbs, NM 88240

DISTRICT II  
P.O. Drawer DD, Artesia, NM 88210

DISTRICT III  
1000 Rio Brazos Rd., Aztec, NM 87410

OIL CONSERVATION DIVISION

P.O. Box 2088  
Santa Fe, New Mexico 87504-2088

MAR 26 1990

OIL CON. DIV.

API NO. (assigned by OCD on New Wells)

5. Indicate Type of Lease

STATE ☐

FEE ☒

6. State Oil & Gas Lease No.

N/A

APPLICATION FOR PERMIT TO DRILL, DEEPEN, ~~DISPLUG~~ BACK

1a. Type of Work:

DRILL ☒

RE-ENTER ☐

DEEPEN ☐

PLUG BACK ☐

b. Type of Well:

OIL  
WELL ☐

GAS  
WELL ☒

OTHER

SINGLE  
ZONE ☒

MULTIPLE  
ZONE ☐

7. Lease Name or Unit Agreement Name

Culpepper Martin

2. Name of Operator

Union Texas Petroleum

3. Address of Operator

PO Box 2120 Houston, TX 77252-2120

8. Well No.

7

9. Pool name or Wildcat

Basin Fruitland Coal

4. Well Location

Unit Letter

M

930

Feet From The South

Line and

1310

Feet From The West

Line

Section

31

Township

32N

Range

12W

NMPM

San Juan

County

10. Proposed Depth

2290

11. Formation

Fruitlan

12. Rotary or C.T.

Rotary

13. Elevations (Show whether DF, RT, GR, etc.)

5816 GR

14. Kind & Status Plug. Bond

National Blanket. Not selected

15. Drilling Contractor

16. Approx. Date Work will start

4/15/90

17.

PROPOSED CASING AND CEMENT PROGRAM

5/315-15

SIZE OF HOLE	SIZE OF CASING	WEIGHT PER FOOT	SETTING DEPTH	SACKS OF CEMENT	EST. TOP
12 1/4	9 5/8	32.3	350	200 sxs B	Surface
8 3/4	7	23.0	2290	140 sxs 65/35	
				100 sxs B	Surface

Union Texas Petroleum wishes to advise that we intend to drill a 12 1/4" hole with spud mud to 350' and set 9 5/8", 32.3#, H-40 ST&C casing to 350' cementing to surface with 200 sxs (236 cu ft) Class B cement with 2% CaCl<sub>2</sub>. Wait on cement 12 hours. Nipple up and test BOP. Drill 8 3/4" hole out of surface to 2290' with mud. Log well. Set 7", 23.0#, K-55 ST&C production casing to 2290' cementing to surface with 140 sxs (402 cu ft) 65/35 POZ with 12% gel and 12 1/4# gilsonite/sk, tailed by 100 sxs (118 cu ft) Class B cement with 2% CaCl<sub>2</sub>. Perforate pay section in the Fruitland Coal, acidize perforations and frac with 100,000# sand in 65,000 gal 30# cross linked gel. Clean up well and install standard production equipment. Test well to reserve pit for a period not to exceed 30 days. Connect well to a gathering system.

IN ABOVE SPACE DESCRIBE PROPOSED PROGRAM: IF PROPOSAL IS TO DEEPEN OR PLUG BACK, GIVE DATA ON PRESENT PRODUCTIVE ZONE AND PROPOSED NEW PRODUCTIVE ZONE. GIVE BLOWOUT PREVENTER PROGRAM, IF ANY.

I hereby certify that the information above is true and complete to the best of my knowledge and belief.

SIGNATURE

*Ken White*

TITLE

REG PERMIT COORD

DATE 3-23-90

TYPE OR PRINT NAME

KEN WHITE

TELEPHONE NO. (713) 968-365.

(This space for State Use)

APPROVED BY

TITLE

SUPERVISOR DISTRICT 6

DATE

MAR 27 1990

CONDITIONS OF APPROVAL, IF ANY:

APPROVAL EXPIRES 9-27-90  
UNLESS DRILLING IS COMMENCED.  
SPUD NOTICE MUST BE SUBMITTED  
WITHIN 10 DAYS.

Submit to Appropriate  
District Office  
State Lease - 4 copies  
Fee Lease - 3 copies

State of New Mexico  
Energy, Minerals and Natural Resources Department

Form C-102  
Revised 1-1-89

OIL CONSERVATION DIVISION

P.O. Box 2088

Santa Fe, New Mexico 87504-2088

RECEIVED

MAR 26 1990

DISTRICT I

P.O. Box 1980, Hobbs, NM 88240

DISTRICT II

P.O. Drawer DD, Artesia, NM 88210

DISTRICT III

1000 Rio Brazos Rd., Aztec, NM 87410

WELL LOCATION AND ACREAGE DEDICATION PLAT

All Distances must be from the outer boundaries of the section

OIL CON. DIV.

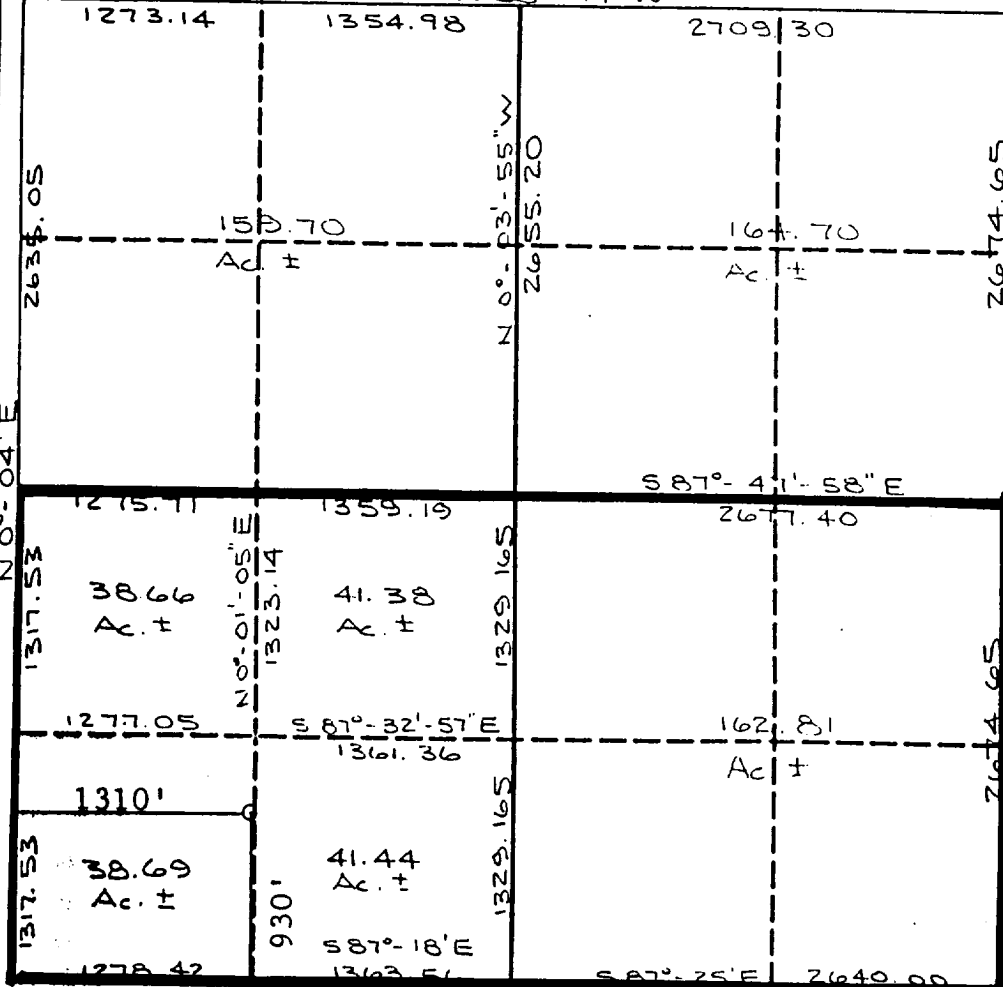
Operator <b>UNION TEXAS PETROLEUM</b>			Lease <b>CULPEPPER MARTIN</b>		DIST. <b>3</b>
Unit Letter <b>M</b>	Section <b>31</b>	Township <b>32N</b>	Range <b>12W</b>	County <b>San Juan</b>	

Actual Footage Location of Well:

930 feet from the <b>South</b> line and	1310 feet from the <b>West</b> line		
Ground level Elev. <b>5816</b>	Producing Formation <b>Fruitland Coal</b>	Pool <b>Basin Fruitland Coal</b>	Dedicated Acreage: <b>322.98 S/2 Acres</b>

- Outline the acreage dedicated to the subject well by colored pencil or hatchure marks on the plat below.
- If more than one lease is dedicated to the well, outline each and identify the ownership thereof (both as to working interest and royalty).
- If more than one lease of different ownership is dedicated to the well, have the interest of all owners been consolidated by communitization, unitization, force-pooling, etc?  
☐ Yes ☒ No If answer is "yes" type of consolidation \_\_\_\_\_  
If answer is "no" list the owners and tract descriptions which have actually been consolidated. (Use reverse side of this form if necessary.)  
No allowable will be assigned to the well until all interests have been consolidated (by communitization, unitization, forced-pooling, or otherwise) or until a non-standard unit, eliminating such interest, has been approved by the Division.

N 88°-14'W



OPERATOR CERTIFICATION

I hereby certify that the information contained herein is true and complete to the best of my knowledge and belief.

Signature *Ken White*

Printed Name **KEN WHITE**

Position

**REG PERMIT COORD**

Company

**UNION TEXAS PETROLEUM**

Date

**3-23-90**

SURVEYOR CERTIFICATION

I hereby certify that the well location shown on this plat was plotted from field notes of actual surveys made by me or under my supervision, and that the same is true and correct to the best of my knowledge and belief.

February 23, 1990

Date Surveyed

Signature & Seal of Professional Surveyor

*Cecil B. Tullis*

**NEW MEXICO**

**REGISTERED PROFESSIONAL LAND SURVEYOR**

**9672**

**Cecil B. Tullis**

Certifying No.