

Submit to Appropriate
District Office
State Lease - 4 copies
Fee Lease - 3 copies

State of New Mexico
Energy, Minerals and Natural Resources Department

Form C-102
Revised 1-1-89

DISTRICT I
P.O. Box 1980, Hobbs, NM 88240

DISTRICT II
P.O. Drawer DD, Artesia, NM 88210

DISTRICT III
1000 Rio Brazos Rd., Aztec, NM 87410

OIL CONSERVATION DIVISION

P.O. Box 2088

Santa Fe, New Mexico 87504-2088

WELL LOCATION AND ACREAGE DEDICATION PLAT

All Distances must be from the outer boundaries of the section

AMENDED C-102
BY HALLWOOD
1/19/93

Operator Hallwood Petroleum, Inc.			Lease Montoya B2		Well No. 35
Unit Letter B	Section 35	Township 32N	Range 13W	County NMPM San Juan	

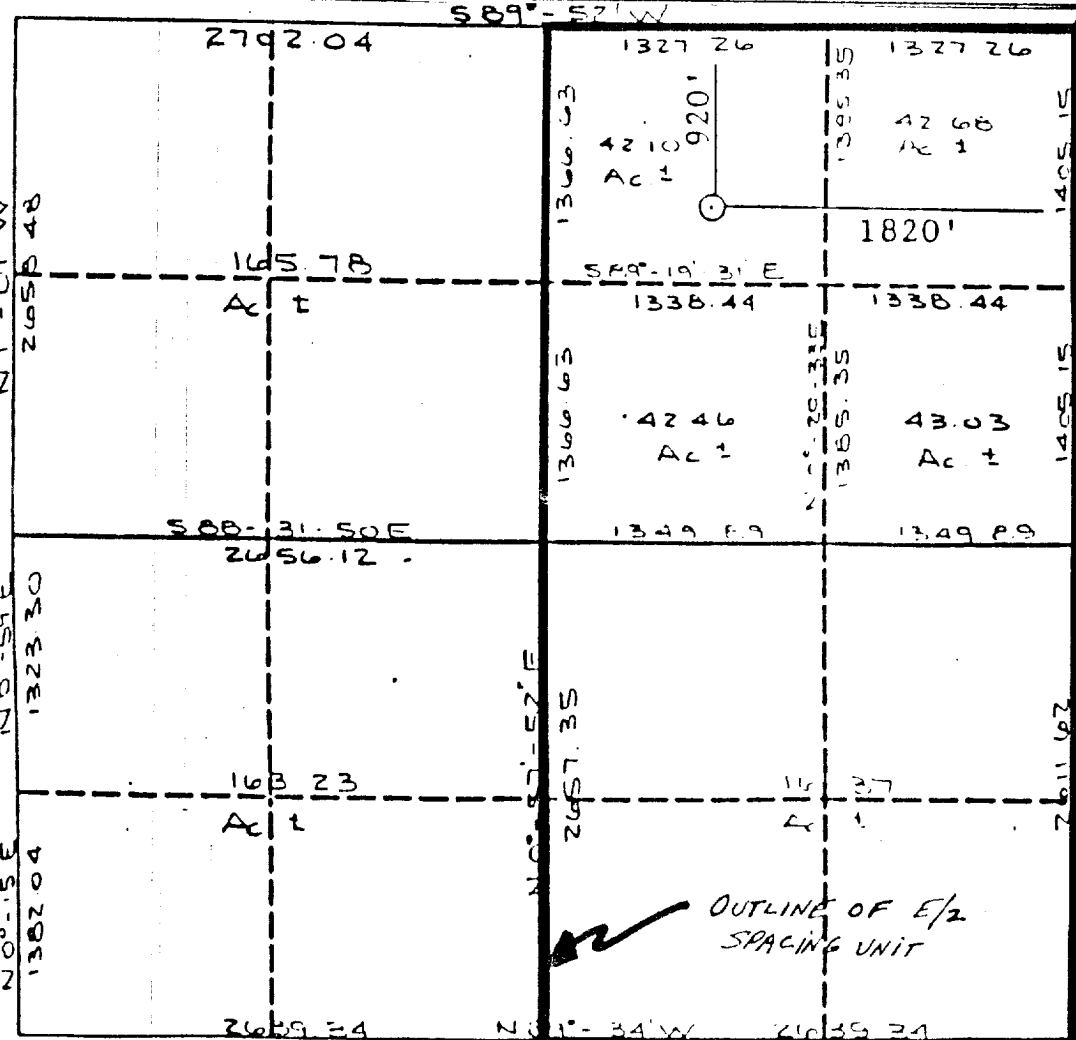
Actual Footage Location of Well:

920 feet from the North line and	1820 feet from the East line
Ground level Elev. 5865	Producing Formation Fruitland Coal
Pool Basin Fruitland Coal	Dedicated Acreage E/2 - 320 Acres

1. Outline the acreage dedicated to the subject well by colored pencil or hatchure marks on the plat below.
2. If more than one lease is dedicated to the well, outline each and identify the ownership thereof (both as to working interest and royalty).
3. If more than one lease of different ownership is dedicated to the well, have the interest of all owners been consolidated by communitization, unitization, force-pooling, etc.?
☐ Yes ☐ No If answer is "yes" type of consolidation _____

If answer is "no" list the owners and tract descriptions which have actually been consolidated. (Use reverse side of this form if necessary.)

No allowable will be assigned to the well until all interests have been consolidated (by communitization, unitization, forced-pooling, or otherwise) or until a non-standard unit, eliminating such interest, has been approved by the Division.



OPERATOR CERTIFICATION

I hereby certify that the information contained herein is true and complete to the best of my knowledge and belief.

Signature
Kevin E. O'Connell
Printed Name
Kevin E. O'Connell
Position
Drilg. & Prod. Supervisor
Company
Hallwood Petroleum, Inc.
Date
January 19, 1993

SURVEYOR CERTIFICATION

I hereby certify that the well location shown on this plat was plotted from field notes of actual surveys made by me or under my supervision, and that the same is true and correct to the best of my knowledge and belief.

Date Surveyed
December 18, 1989
Signature & Seal of Professional Surveyor
B. TULLY
REGISTERED PROFESSIONAL LAND SURVEYOR
Certificate No.
9672