

UNITED STATES
DEPARTMENT OF THE INTERIOR
BUREAU OF LAND MANAGEMENT

APPLICATION FOR PERMIT TO DRILL, DEEPEN, OR PLUG BACK

1a. TYPE OF WORK
DRILL ☒ DEEPEN ☐ PLUG BACK ☐

b. TYPE OF WELL
OIL WELL ☐ GAS WELL ☒ OTHER ☐
SINGLE ZONE ☒ MULTIPLE ZONE ☐

2. NAME OF OPERATOR
Hallwood Petroleum, Inc. 9812

3. ADDRESS OF OPERATOR
P.O. Box 378111 Denver, CO 80237

4. LOCATION OF WELL (Report location clearly and in accordance with any State requirements.)
At surface 947' FSL 800' FEL

At proposed prod. zone
Same

14. DISTANCE IN MILES AND DIRECTION FROM NEAREST TOWN OR POST OFFICE*
3 miles NE of LaPlata, New Mexico

15. DISTANCE FROM PROPOSED*
LOCATION TO NEAREST
PROPERTY OR LEASE LINE, FT.
(Also to nearest drlg. unit line, if any) 800

18. DISTANCE FROM PROPOSED LOCATION*
TO NEAREST WELL, DRILLING, COMPLETED,
OR APPLIED FOR, ON THIS LEASE, FT. 135

21. ELEVATIONS (Show whether DF, RT, GR, etc.)
5926' GR

23. PROPOSED CASING AND CEMENTING PROGRAM

SIZE OF HOLE	SIZE OF CASING	WEIGHT PER FOOT	SETTING DEPTH
12 1/4	8 5/8	24	350
7 7/8	5 1/2	17	2200

5. LEASE DESIGNATION AND SERIAL NO.

NM-SF-078818-A

6. IF INDIAN, ALLOTTEE OR TRIBE NAME

7. UNIT AGREEMENT NAME

8. FARM OR LEASE NAME

USA 4918

9. WELL NO.

5

10. FIELD AND POOL, OR WILDCAT

Basin Fruitland Coal

11. SEC., T., R., M., OR BLK.

Section 24 T32N R13W

12. COUNTY OR PARISH

San Juan

13. STATE

NM

17. NO. OF ACRES ASSIGNED TO THIS WELL

320 E/2

20. ROTARY OR CABLE TOOLS

Rotary

22. APPROX. DATE WORK WILL START*

11/1/92

1. The proposed USA No. 5 well is located 135' north of an existing deeper pool(s) USA No. 1 well a dual completed Mesaverde/Dakota gas well.
2. The proposed USA No. 5 well is at a non-standard location for a Basin Fruitland Coal gas well. An application by Hallwood Petroleum (Case #10557) and a hearing for an unorthodox coal gas well location was conducted on 9/17/92.
3. Hallwood proposes to spud this well with a 12 1/4" hole and drill to 350', where 8 5/8", 24#, J-55 surface casing will be set and cemented to surface. After WOC for 12 hrs, the BOP's will be installed and tested. The 7 7/8" hole will be drilled to TD of approximately 2200' with low weight (9-10 ppg) water based mud. the well will be electric logged with a density tool and 5.50", 17#, K-55 casing will be run to total depth and cemented from the Fruitland Basin Coal to surface with approximately 350 sxs of cement. The Fruitland Basin Coal interval will then be fracture stimulated with approximately 200,000# of 12/20 sand, swab or flow test to cleanup and put on conventional beam lift with a pump, rods, and pumping unit.
4. A copy of the archaeological inventory report is enclosed (EXHIBIT 10).

24. Kevin O'Connell Western District
SIGNED *Kevin E. O'Connell* TITLE Drlg and Production Suprv DATE 9/30/92

(This space for Federal State Use)

PERMIT NO. APPROVAL DATE

APPROVED BY NOV 23 1992

CONDITIONS OF APPROVAL, IF ANY: TITLE

ah > p. OIL CON. DIV. DIST. 2 NMCCD

APPROVED AS AMENDED NOV 17 1992

AREA MANAGER

*See Instructions On Reverse Side

Submit to Appropriate
District Office
State Lease - 4 copies
Fee Lease - 3 copies

State of New Mexico
Energy, Minerals and Natural Resources Department

Form C-102
Revised 1-1-89

OIL CONSERVATION DIVISION

P.O. Box 2088
Santa Fe, New Mexico 87504-2088

RECEIVED
BLM

92 OCT -8 PM 3:59

OLD FATHER PETROLEUM, N.M.

DISTRICT I
P.O. Box 1980, Hobbs, NM 88240

DISTRICT II
P.O. Drawer DD, Artesia, NM 88210

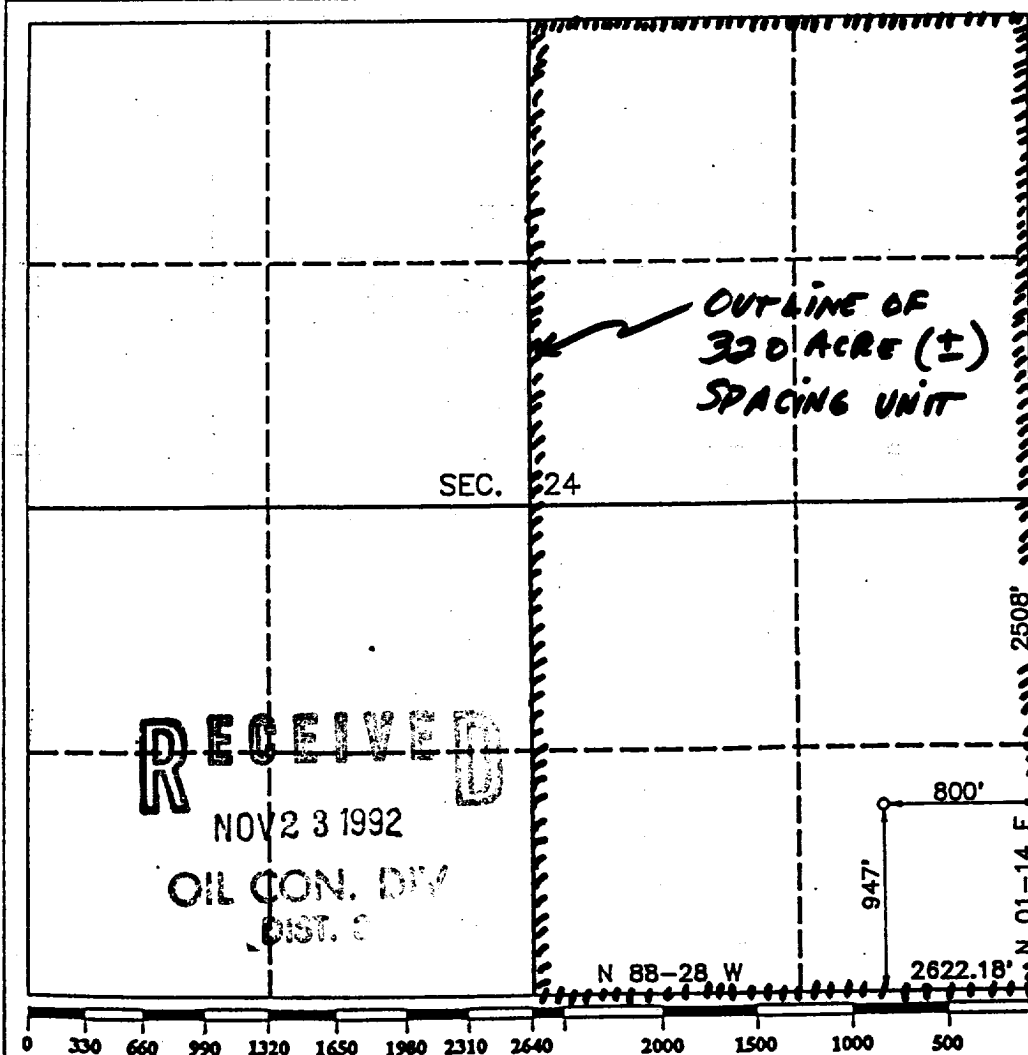
DISTRICT III
1000 Rio Brazos Rd., Aztec, NM 87410

WELL LOCATION AND ACREAGE DEDICATION PLAT

All Distances must be from the outer boundaries of the section

Operator HALLWOOD PETROLEUM Inc		Lease USA		Well No. 5	
Unit Letter P	Section 24	Township T.32 N.	Range R.13 W.	County SAN JUAN	
Actual Footage Location of Well: 947 feet from the SOUTH line and 800 feet from the EAST line					
Ground level Elev. 5926	Producing Formation Int Coal		Pool Reservoir + Coal	Dedicated Acreage: 320 Acres	

- Outline the acreage dedicated to the subject well by colored pencil or hatchure marks on the plat below.
- If more than one lease is dedicated to the well, outline each and identify the ownership thereof (both as to working interest and royalty).
- If more than one lease of different ownership is dedicated to the well, have the interest of all owners been consolidated by communitization, unitization, force-pooling, etc?
☐ Yes ☐ No If answer is "yes" type of consolidation _____
 If answer is "no" list the owners and tract descriptions which have actually been consolidated. (Use reverse side of this form if necessary.) _____
 No allowable will be assigned to the well until all interests have been consolidated (by communitization, unitization, forced-pooling, or otherwise) or until a non-standard unit, eliminating such interest, has been approved by the Division.



OPERATOR CERTIFICATION

I hereby certify that the information contained herein is true and complete to the best of my knowledge and belief.

Signature
Kevin E. O'Connell
Printed Name
KEVIN E. O'CONNELL
Position
Datg. & Prod. Supervisor
Company
Hallwood Petroleum Inc
Date
10/26/92

SURVEYOR CERTIFICATION

I hereby certify that the well location shown on this plat was plotted from field notes of actual surveys made by me or under my supervision, and that the same is true and correct to the best of my knowledge and belief.

Date Surveyed
NOV 23 1992

Signature & Seal of MEXICO
Professional Surveyor
ROY A RUSH
Certificate No. **8894**

