

UNITED STATES
DEPARTMENT OF THE INTERIOR
BUREAU OF LAND MANAGEMENT

30-045-28891

APPLICATION FOR PERMIT TO DRILL, DEEPEN, OR PLUG BACK

1a. TYPE OF WORK
DRILL ☒ DEEPEN ☐ PLUG BACK ☐

b. TYPE OF WELL
OIL WELL ☐ GAS WELL ☒ OTHER ☐ SINGLE ZONE ☒ MULTIPLE ZONE ☐

2. NAME OF OPERATOR
Emerald Gas Operating Company 36415

3. ADDRESS OF OPERATOR
570 Turner Drive Unit B, Durango, CO 81301

4. LOCATION OF WELL (Report location clearly and in accordance with any State requirements.)
At surface
SESW, 1140' FSL and 2078' FWL
At proposed prod. zone
Same

14. DISTANCE IN MILES AND DIRECTION FROM NEAREST TOWN OR POST OFFICE*
Approximately 5 miles due west of Cedar Hill, N.M.

15. DISTANCE FROM PROPOSED* LOCATION TO NEAREST PROPERTY OR LEASE LINE, FT.
(Also to nearest drlg. unit line, if any)
1140'

18. DISTANCE FROM PROPOSED LOCATION* TO NEAREST WELL, DRILLING, COMPLETED, OR APPLIED FOR, ON THIS LEASE, FT.
689'

21. ELEVATIONS (Show whether DF, RT, GR, etc.)
This action is subject to technical and procedural review pursuant to 43 CFR 3165.3 and appeal pursuant to 43 CFR 3165.4.
GL: 6022'

PROPOSED CASING AND CEMENTING PROGRAM

SIZE OF HOLE	SIZE OF CASING	WEIGHT PER FOOT	SETTING DEPTH	QUANTITY OF CEMENT
12 1/4"	9 5/8"	32.0-J55	300'	230 sx (Class 'B')
8 3/4"	7"	23.0-K55	2525'	375 sx (175 sx lead)
Cavity	N/A	N/A	2525-2755	200 sx tail

Operator proposes to drill the well and complete open hole to test the gas potential of the Fruitland Formation coal seams. The following are attached:

- Exhibit A: Surveyor's Location and Elevation Plat.
- Exhibit B: Drilling Program
- Exhibit C-1,2 and 3: Blowout Preventer Schematic
- Exhibit D: Surface Use Program
- Exhibit E-1 and 2: Vicinity Map and Existing/Access Road Map
- Exhibit F: Radius Map of Field, Showing Existing Wells
- Exhibit G: Drill Pad Layout with Cut/Fill Diagram
- Exhibit H-1 and 2: Drilling Rig Layout and Layout of Anticipated Production Facilities.

Additionally, this APD serves as an application to travel on existing BLM roads for the purpose of access to this location.

IN ABOVE SPACE DESCRIBE PROPOSED PROGRAM: If proposal is to deepen or plug back, give data on present productive zone and proposed new productive zone. If proposal is to drill or deepen directionally, give pertinent data on subsurface locations and measured and true vertical depths. Give blowout preventer program, if any.

24.

SIGNED Barclay C. Bayle TITLE Manager Development/Geology DATE December 1, 1992

(This space for Federal or State comments)

PERMIT NO.

APPROVAL DATE

APPROVED BY

CONDITIONS OF APPROVAL, IF ANY:

RECEIVED

DEC 15 1992

OIL CON. DIV
DIST. 3

TITLE

NMOOD

APPROVED
AS AMENDED

DEC 11 1992

AREA MANAGER

*See Instructions On Reverse Side

EMERALD GAS OPERATING COMPANY

EXHIBIT "A": SURVEYOR'S LOCATION & DEDICATION PLAT

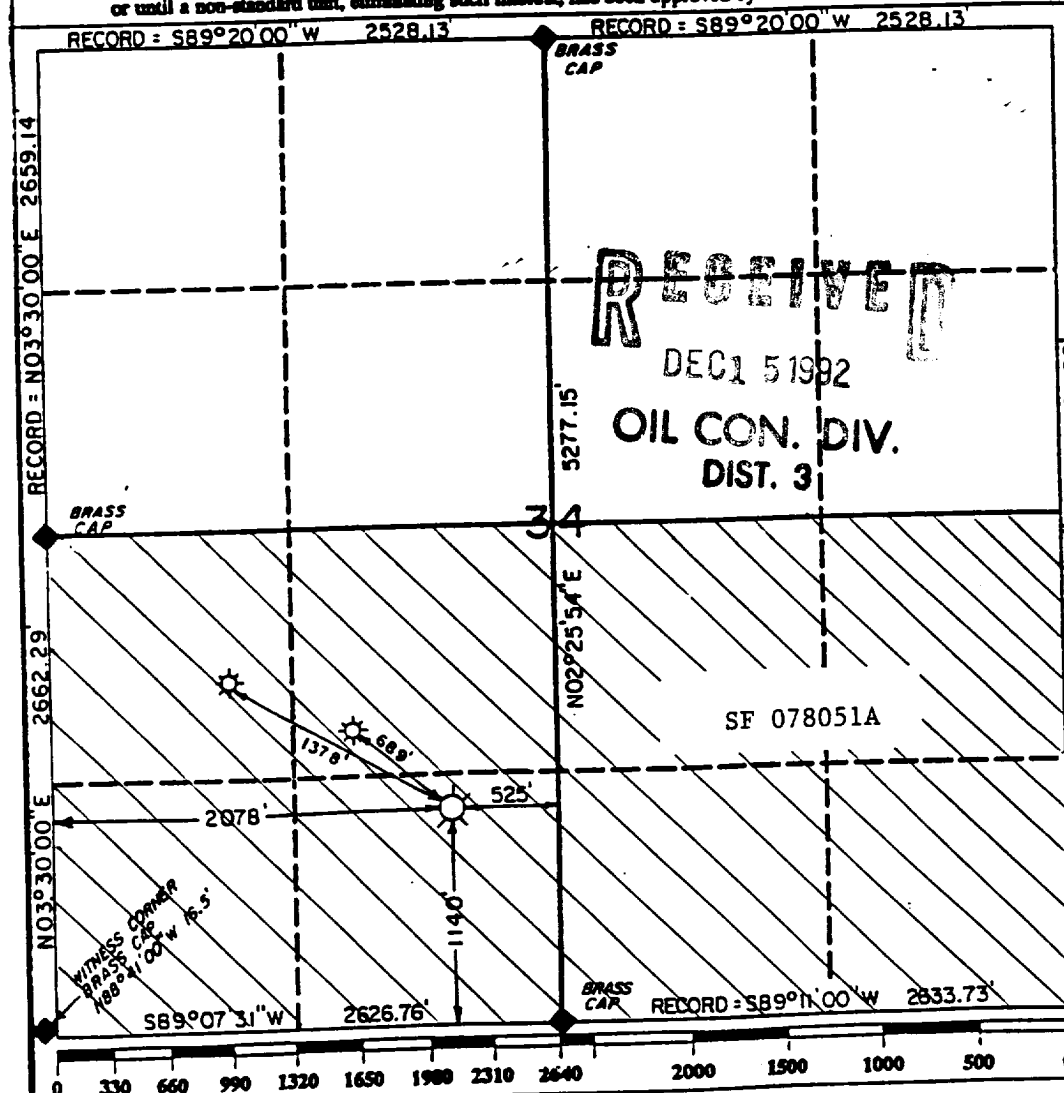
Operator EMERALD GAS OPERATING COMPANY			Lease STOREY FEDERAL CB-34		Well No. #1
Unit Letter N	Section 34	Township 32 North	Range 11 West	County NMPM San Juan	
Actual Footage Location of Well: <div> <div>1140</div> <div>feet from the</div> <div>South</div> <div>line and</div> <div>2078</div> <div>feet from the</div> <div>West</div> <div>line</div> </div>					
Ground level Elev. 6022		Producing Formation Fruitland Coals		Pool Basin Fruitland Coal	Dedicated Acreage: 320 Acres

- Outline the acreage dedicated to the subject well by colored pencil or hatchure marks on the plat below.
- If more than one lease is dedicated to the well, outline each and identify the ownership thereof (both as to working interest and royalty).
- If more than one lease of different ownership is dedicated to the well, have the interest of all owners been consolidated by communitization, unitization, force-pooling, etc.?

☐ Yes ☐ No N/A If answer is "yes" type of consolidation _____

If answer is "no" list the owners and tract descriptions which have actually been consolidated. (Use reverse side of this form if necessary.)

No allowable will be assigned to the well until all interests have been consolidated (by communitization, unitization, forced-pooling, or otherwise) or until a non-standard unit, eliminating such interest, has been approved by the Division.



OPERATOR CERTIFICATION

I hereby certify that the information contained herein is true and complete to the best of my knowledge and belief.

Signature
Bradford C. Boyce

Printed Name
Bradford C. Boyce

Position
Manager Development

Company
Emerald Gas Operating Co.

Date
December 1, 1992

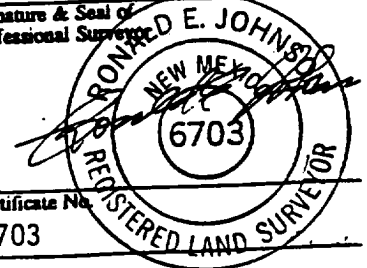
SURVEYOR CERTIFICATION

I hereby certify that the well location shown on this plat was plotted from field notes, actual surveys made by me or under my supervision, and that the same is true and correct to the best of my knowledge and belief.

11/24/92

Date Surveyed
Ronald E. Johnson

Signature & Seal of Professional Surveyor



Certificate No.
6703

Story Federal CB-34 #1
SE SW, Section 34, T32N-R11W

