



## **Ernie Busch**

---

**From:** Ernie Busch  
**To:** Mike Stogner  
**Subject:** MERIDIAN UTE #28 (NSL)  
**Date:** Tuesday, July 25, 1995 10:05AM  
**Priority:** High

UTE #28  
1000' fsl;1075'FEL  
P-08-32N-14W  
RECOMMEND: APPROVAL

**MERIDIAN OIL**

**RECEIVED**  
JUL 11 1995  
**OIL CON. DIV.**  
**DIST. 3**

July 10, 1995

Sent Federal Express

Mr. William LeMay  
New Mexico Oil Conservation Division  
2040 South Pacheco  
Santa Fe, New Mexico 87505

Re: Ute #28  
1000'FSL, 1075'FEL, Section 8, T-32-N, R-14-W - San Juan County, New Mexico  
API # 30-045-(not assigned)

Dear Mr. LeMay:

Meridian Oil Inc. is applying for administrative approval of a non-standard location for the above location in the Desert Creek formation. This application for the referenced location is due to terrain as shown on the topographic map and the presence of extensive archaeology.


The following attachments are for your review:

1. Application for Permit to Drill.
2. Completed C-102 at referenced location.
3. Offset operators/owners plat.
4. 7.5 minute topographic map showing the orthodox windows, and enlargement of the map to define topographic features.

Meridian Oil Inc. is the operator surrounding this well.

We appreciate your very prompt consideration of this application, as we wish to drill this well during the good weather of the summer season.


Sincerely,

  
Peggy Bradfield  
Regulatory/Compliance Representative  
encs.

UNITED STATES  
DEPARTMENT OF THE INTERIOR  
BUREAU OF LAND MANAGEMENT

RECEIVED  
JUL 11 1995

APPLICATION FOR PERMIT TO DRILL, DEEPEN, OR PLUG BACK **OIL CON. DIV.**  
**DIST. 3**

1a. Type of Work DRILL	5. Lease Number I-22-IND-2772 Unit Reporting Number	
1b. Type of Well GAS	6. If Indian, All. or Tribe Ute Mountain Ute	
2. Operator <b>MERIDIAN OIL</b>	7. Unit Agreement Name	
3. Address & Phone No. of Operator PO Box 4289, Farmington, NM 87499  (505) 326-9700	8. Farm or Lease Name Ute 9. Well Number 28	
4. Location of Well 1000'FSL, 1075'FEL  Latitude 36° 59' 53", Longitude 108° 19' 35"	10. Field, Pool, Wildcat Barker Creek Padadox 11. Sec., Twn, Rge, Mer. (NMPM) Sec 8, T-32N, R-14W API # 30-045-	
14. Distance in Miles from Nearest Town 13 miles to LaPlata	12. County San Juan	13. State NM
15. Distance from Proposed Location to Nearest Property or Lease Line 1000'		
16. Acres in Lease	17. Acres Assigned to Well	
18. Distance from Proposed Location to Nearest Well, Drig, Compl, or Applied for on this Lease 4900'		
19. Proposed Depth 8680'	20. Rotary or Cable Tools Rotary	
21. Elevations (DF, FT, GR, Etc.) 6283'GR	22. Approx. Date Work will Start 2nd quarter 1995	
23. Proposed Casing and Cementing Program See Operations Plan attached		
24. Authorized by:  Regional Drilling Engineer	Date _____	

PERMIT NO. \_\_\_\_\_ APPROVAL DATE \_\_\_\_\_  
APPROVED BY \_\_\_\_\_ TITLE \_\_\_\_\_ DATE \_\_\_\_\_

Archaeological Report submitted by LaPlata Archaeological Consultants LAC Report 9440e dated 09-01-94  
Threatened and Endangered Species Report submitted Ecosphere Environmental dated 08-23-94  
NOTE: This format is issued in lieu of U.S. BLM Form 3160-3

District I  
PO Box 1988, Hobbs, NM 88241-1988  
District II  
P.O. Drawer DD, Artesia, NM 88211-0719  
District III  
1000 N. Brazos Rd., Aztec, NM 87410  
District IV  
PO Box 2088, Santa Fe, NM 87504-2088

State of New Mexico  
Energy, Minerals & Natural Resources Department

OIL CONSERVATION DIVISION  
PO Box 2088  
Santa Fe, NM 87504-2088

Form C-102  
Revised February 21, 1994  
Instructions on back  
Submit to Appropriate District Office  
State Lease - 4 Copies  
Fee Lease - 3 Copies

☐ AMENDED REPORT

WELL LOCATION AND ACREAGE DEDICATION PLAT

API Number 30-045-		Pool Code 96353	Pool Name Barker Dome Desert Creek
Property Code 7618	Property Name Ute		Well Number 28
OGRID No. 14538	Operator Name MERIDIAN OIL INC.		Elevation 6283'

<sup>10</sup> Surface Location

UL or lot no.	Section	Township	Range	Lot Ida	Feet from the	North/South line	Feet from the	East/West line	County
P	8	32 N	14 W		1000	South	1075	East	S.J.

<sup>11</sup> Bottom Hole Location If Different From Surface

UL or lot no.	Section	Township	Range	Lot Ida	Feet from the	North/South line	Feet from the	East/West line	County

<sup>12</sup> Dedicated Acres 527	<sup>13</sup> Joint or Infill	<sup>14</sup> Consolidation Code	<sup>15</sup> Order No.
--------------------------------------	-------------------------------	----------------------------------	-------------------------

NO ALLOWABLE WILL BE ASSIGNED TO THIS COMPLETION UNTIL ALL INTERESTS HAVE BEEN CONSOLIDATED  
OR A NON-STANDARD UNIT HAS BEEN APPROVED BY THE DIVISION

<p>16</p> <p>DECEIVED JUL 1 1995 OIL CON. DIV. DIST. 3</p>	<p>17 OPERATOR CERTIFICATION</p> <p>I hereby certify that the information contained herein is true and complete to the best of my knowledge and belief</p> <p>Signature Peggy Bradfield Printed Name Regulatory Affairs Title 6-1-95 Date</p> <p>18 SURVEYOR CERTIFICATION</p> <p>I hereby certify that the well location shown on this plat was plotted from field notes of actual surveys made by me or under my supervision, and that the same is true and correct to the best of my belief.</p> <p>11-4-94</p> <p>Date of Survey Signature and Seal of Surveyor NEHE C. EDWARDS 8857 6857 Certificate Number</p>
--	--

March 10, 1995

OPERATIONS PLAN

**Well Name:** Ute #28  
**Location:** 1000'FSL, 1075'FEL, Section 8, T-32-N, R-14-W  
San Juan County, New Mexico  
**Formation:** Barker Creek Paradox  
**Elevation:** 6283'GR

Formation:	Top	Bottom	Contents
Surface	Menefee	250'	
Point Lookout	250'	745'	fresh water
Mancos	745'	1652'	
8 5/8" surface casing	1000'		+ 250' into Mancos
Niobrara	1652'	2384'	
Greenhorn	2384'	2438'	
Graneros	2438'	2507'	
Dakota	2507'	2746'	gas
Morrison	2746'	3289'	freshwater
Junction Creek	3289'	3640'	salt water
Summerville	3640'	3729'	
Todilto	3729'	3738'	
Entrada	3738'	3847'	salt water
Chinle	3847'	5291'	
Cutler	5291'	6876'	
Hermosa	6876'	8071'	
Upper Ismay	8050'	8113'	gas (potentially 100-500 ppm H <sub>2</sub> S)
Lower Ismay	8113'	8215'	gas (potentially 100-500 ppm H <sub>2</sub> S)
Desert Creek	8215'	8328'	gas (potentially 100-500 ppm H <sub>2</sub> S)
Akah	8328'	8501'	
Upper Barker Creek	8501'		gas (potentially 100-500 ppm H <sub>2</sub> S)
Total Depth	8680'		

Logging Program:

Mud logs - 1600' to Total Depth  
Wireline Logs - AIT,LDT-CNL,DSS,ML - to Total Depth

Mud Program:

20" conductor hole -	0 - 90' - dry hole digger
12 1/4" surface -	90 - 1000' - freshwater spud mud
7 7/8" production -	1000 - 7550' - LSND(mud up 500' above Ismay)
	7550 - 8680' - Dispersed

Pressure Control Program:

12 1/4" hole - diversion only

7 7/8" hole - a 3000 psi WP casinghead will be installed on the surface casing. A 3000 psi WP annulus preventer, a 3000 psi WP double gate preventer equipped with blind and pipe rams, and a 3000 psi x 3000 psi WP drilling spool with kill and choke lines will be nipped up on the casinghead.

Operations Plan  
Ute #28  
March 16, 1995

**Pressure Control Program (cont'd):**

7 7/8" hole - The annulus preventer will be tested to 2200 psi (75% burst) against casing. Pipe and blind rams, choke line, and manifold will be tested at 500 psi and 2200 psi against casing. Casing will be tested to 2200 psi prior to drilling the shoe.

Completion - a 5000 psi WP tubinghead will be installed on the production casing. A 5000 psi WP double gate preventer equipped with blind and pipe rams and a 5000 psi drilling spool equipped with kill and choke lines will be nipped up on the tubinghead. One 7" blooie line will be nipped up above the BOP's. A rotating head will be nipped up on top of the blooie line. Pipe and blind rams, choke line, and manifold will be tested at 500 psi and 4000 psi against casing. Casing will be tested to 4000 psi prior to completing the well.

BOP systems will be consistent with API RP 53. Pressure tests will be conducted before drilling out from under all casing strings which are set and cemented in place. Blow out preventer controls will be installed prior to drilling the surface casing plug and will remain in use until the well is completed or abandoned. All tests will be reported on the daily drilling report. Preventers will be tested before drilling casing cement plugs.

In the event that a kick is taken while drilling, the following procedure will be followed:

1. Pick up kelly and raise the tool joint above floor.
2. Shut down the mud pump.
3. Close the annular preventer.
4. Record standpipe pressure (SIDPP) after it stabilizes and pit gain.
5. Calculate Initial Circulating Pressure = Slow Circulating Pressure + SIDPP.
6. Calculate kill mud weight required.
7. Complete kill sheet.
8. Decide whether to raise mud weight or drill under-balanced.

**BOP Configuration:**

20" conductor hole	-	0' - 90' - not applicable
12 1/4" surface hole	-	90' - 1000' - diverter only
<b>5000 psi system</b>		
7 7/8" production hole	-	1000' - 8680' - Figures #1 & #2

Operations Plan  
Ute #28  
March 16, 1995

**Casing Program: (all casing will be new)**

<u>Hole Size</u>	<u>Depth Interval</u>	<u>Csg. Size</u>	<u>Wt.</u>	<u>Grade</u>
20"	0' - 90'	16"		Conductor
12 1/4"	0' - 1000'	8 5/8"	24.0#	K-55 LT&C
7 7/8"	0' - 8680'	5 1/2"	17.0#	L-80 LT&C

**Float Equipment:**

Surface casing - guide shoe, float collar, centralizers every 4th joint.  
Production casing - float shoe, float collar, stage tools @ 2357' and 7900', centralizers every 4th joint.

**Wellhead Equipment (sour gas service):**

11" 3000 psi x 8 5/8" female thread casinghead  
11" 3000 psi x 7 1/16" 5000 psi tubinghead  
7 1/16" 5000 psi x 2 7/8" 5000 psi adapter

Tree assembly for single completion gas service.

**Cementing:**

20" conductor - Reddymix - grout to surface

12 1/4" surface - cement with 400 sx Class "B" 65/35 Pozmix with 1/4# flocele/sx, 6% gel and 2% calcium chloride (12.4#/gal. weight) 707 cu.ft. of slurry). Tail with 100 sx Class "B" neat with 1/4# flocele/sx and 2% calcium chloride (15.6#/gal. weight; 118 cu.ft. of slurry), 100% excess circulated to surface.

7 7/8" production -

First stage - cement with 235 sx Class "G" with 1% fluid loss additive, 2% defoamer, and 1/4# flocele/sx (15.8 gal.weight; 270 cu.ft. of slurry), 100% excess circulated to stage tool @ 7900' (150' above Ismay).

Second stage - cement with 883 sx Class "B" 65/35 Pozmix w/6% gel, 1/2% fluid loss additive, 1/4# flocele/sx and 2% calcium chloride (12.4#/gal. weight; 1563 cu.ft. of slurry). Tail with 100 sx Class "B" neat with 0.5% fluid loss additive and 1/4#/sx flocele (15.8#/gal.weight; 118 cu.ft. of slurry), 75% excess circulated to stage tool @ 2357' (150' above Dakota).

Third stage - cement with 341 sx Class "B" 65/35 Pozmix w/6% gel, 1/2% fluid loss additive, 1/4# flocele/sx and 2% calcium chloride (12.4#/gal. weight; 721 cu.ft. of slurry). Tail with 100 sx Class "B" neat with 0.5% fluid loss additive and 1/4#/sx flocele (15.8#/gal.weight; 118 cu.ft. of slurry), 75% excess circulated to surface.

NOTE: 4 hour circulation time between stages.

**Drill Stem Test Program:** none

**Coring Program:** none

**Anticipated abnormal pressures or temperatures:** none

Operations Plan  
Ute #28  
March 10, 1995

**Anticipated potentially hazardous conditions:**

1. H<sub>2</sub>S is anticipated to exist from the Paradox (Ismay) formation to Total Depth.
2. Anticipated concentrations are estimated at 300 - 500 ppm.
3. All gasses encountered will be flared.
4. H<sub>2</sub>S safety equipment will be operational at 1000' above Paradox (Ismay) formation.
5. H<sub>2</sub>S safety equipment will be provided for all personnel on location at all times.
6. All personnel on location will be H<sub>2</sub>S certified.
7. An H<sub>2</sub>S trained professional will be on location at all pertinent times; i.e., DST's, cementing operations, under-balanced drilling, etc.
8. The toxicity of H<sub>2</sub>S gas is as follows:

1 ppm = .0001% (1/10,000 of 1%)	Can smell.
10 ppm = .001% (1/1000 of 1%)	Allowable for 8 hrs. exposure
50 ppm = .005% (5/1000 of 1%)	NOTE: when H <sub>2</sub> S concentration reaches 10 ppm on the rig floor, call for the safety trailer.
100 ppm = .01% (1/100 of 1%)	Kills smell rapidly. Burns eyes and throat.
500 ppm = .05% (5/100 of 1%)	Loses sense of reasoning and balance. Respiratory disturbances in 2-15 min. Needs prompt artificial resuscitation.
700 ppm = .07% (7/100 of 1%)	Will become unconscious quickly. Breathing will stop and death will result if not rescued promptly.
1,000 ppm = .10% (1/10 of 1%)	Unconscious at once. PERMANENT BRAIN DAMAGE MAY RESULT UNLESS RESCUED PROMPTLY.

## H<sub>2</sub>S Drilling Operations Plan

1. Training Program - Meridian Oil will ensure all personnel have been properly H<sub>2</sub>S trained as per API RP 49 prior to three days or 1000 feet prior to penetrating the Upper Ismay. An initial training session and weekly H<sub>2</sub>S and well control drills for all personnel in each working crew will be conducted. Each training session and drill will be recorded on the drillers log. Two briefing areas will be designated and located at least 150 feet from the wellbore. One such briefing area will be upwind of the well at all times. John Dolan, Meridian Oil Safety Representative, will be designated and identified to all personnel on-site as responsible for on-site safety and training programs.
2. Protective Equipment - Meridian Oil will ensure respiratory protection equipment program is implemented as per ANSI 2.88.2-1980. Proper breathing apparatus will be readily accessible for all essential personnel, meaning one working breathing apparatus including a five minute escape-type SCBA for the derrickman, available for all essential personnel. The following additional safety equipment will be available for use:
  - a. Effective means of communication when using breathing apparatus.
  - b. A flare gun and flares to ignite well.
  - c. A telephone, radio, mobile phone or other device that provides communication from a safe area, where practical.
3. H<sub>2</sub>S Detection and Monitoring Equipment
  - a. Drilling - will be three sensing points (shale shaker, rig floor, bell nipple) with rapid response sensors capable of sensing a minimum of 10 ppm of H<sub>2</sub>S, in ambient air, which automatically activates visible and audible alarms at levels or threshold limits of 10 and 15 ppm, respectively.

Completion - same as above except sensors will be located at the rig floor, cellar, and shale shaker or circulating tank.

Workover - will have one sensor operational as close to the wellbore as possible.
  - b. All tests on H<sub>2</sub>S monitoring system will be recorded on drillers log.
4. Visible Warning System
  - a. Wind direction indicators (drilling (2); completion/workover (1)) will be located at separate elevations with one indicator clearly visible at all times from principle working areas. The wind indicator will be clearly visible from the briefing areas or additional indicators will be installed at such areas.

b. Operation Danger or Caution signs will be displayed along all controlled accesses to the site. each sign will be painted high visibility red, black, and white or yellow with black lettering. Signs will be large enough to be read by all persons entering the wellsite and be placed a minimum of 200 feet but no more than 500 feet from the wellsite.

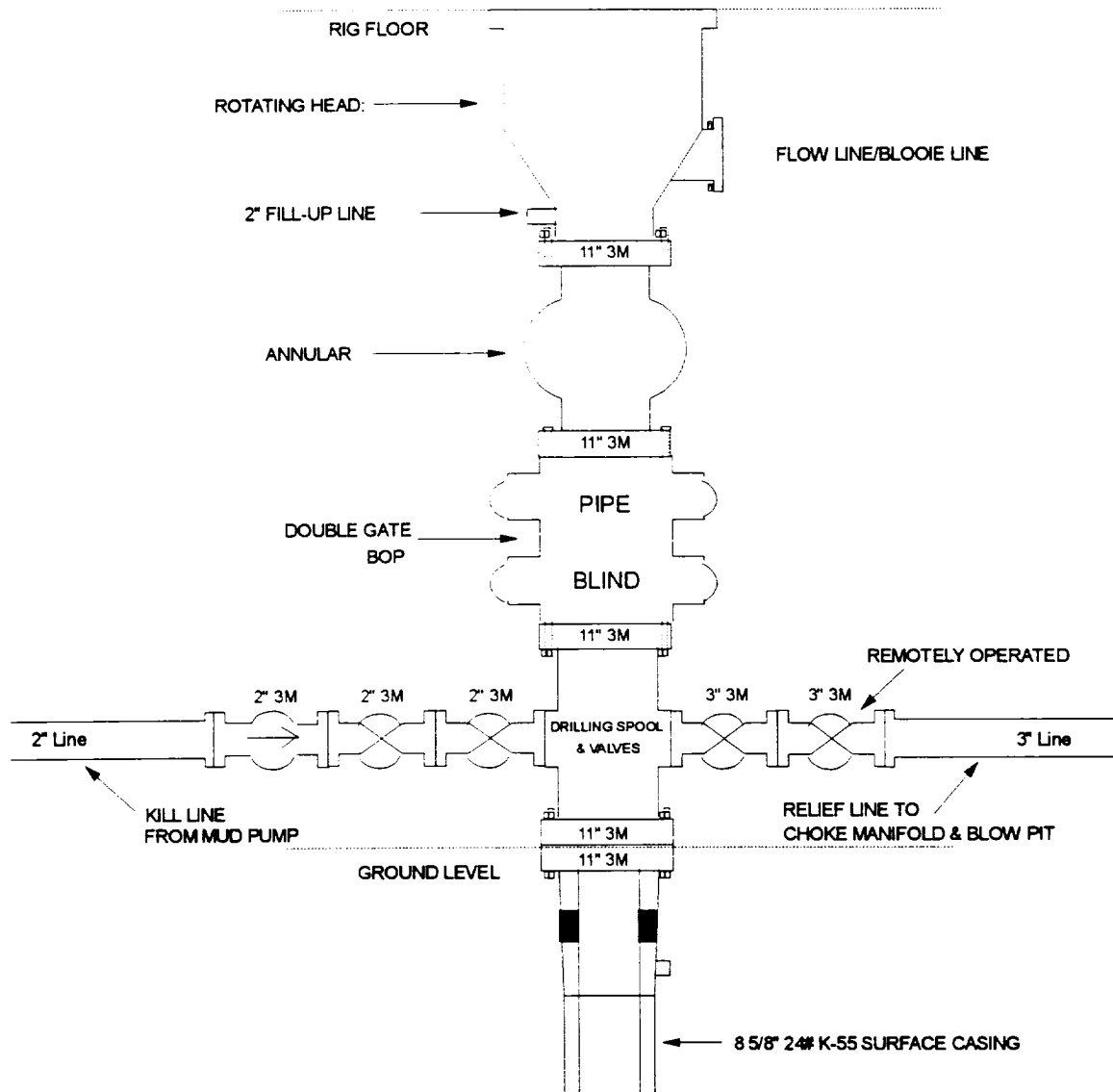
c. The sign(s) will read "DANGER - POISON GAS - HYDROGEN SULFIDE" and in smaller lettering, "Do not approach if red flag is flying".

d. When  $H_2S$  is detected in excess of 10 ppm, red flag(s) will be displayed and visible to all personnel approaching the location under normal lighting and weather conditions.

5. Warning System Response -  $H_2S$  detected above 10 ppm will initiate all non-essential personnel to be moved to a safe area and all essential personnel to don breathing apparatus.

# MERIDIAN OIL INC.

## Drilling Rig Surface Casing BOP Configuration 3,000 psi System

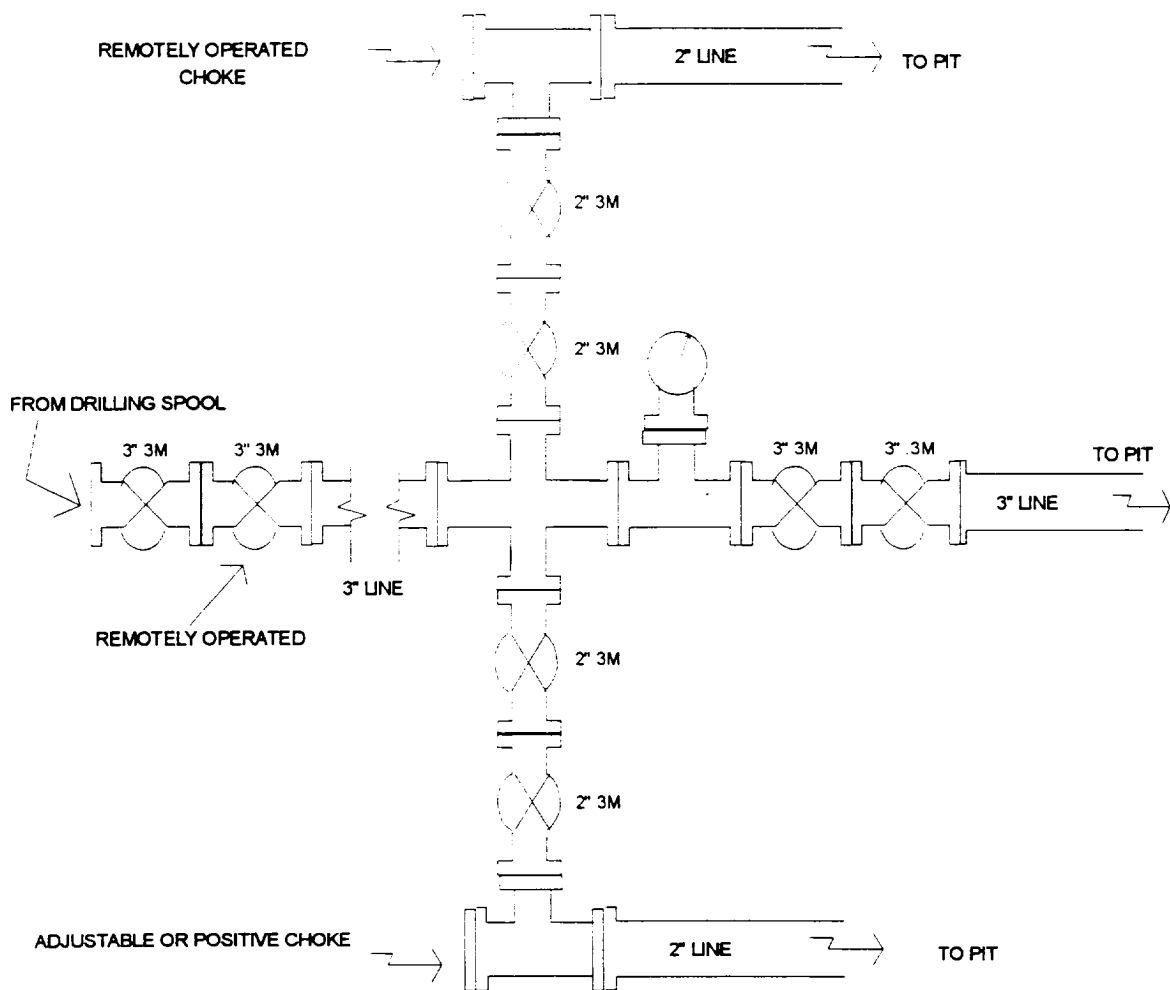


BOP installation from Surface Casing Point to Total Depth. 11" Bore (10" Nominal), 3,000psi working pressure double gate BOP to be equipped with blind and pipe rams. A 3,000psi Annular preventer to be installed on top of rams. A rotating head on the top of Annular preventer. All BOP equipment is 3,000psi working pressure.

Figure #1

# MERIDIAN OIL INC.

## Drilling Rig Choke Manifold Configuration 3000 psi System



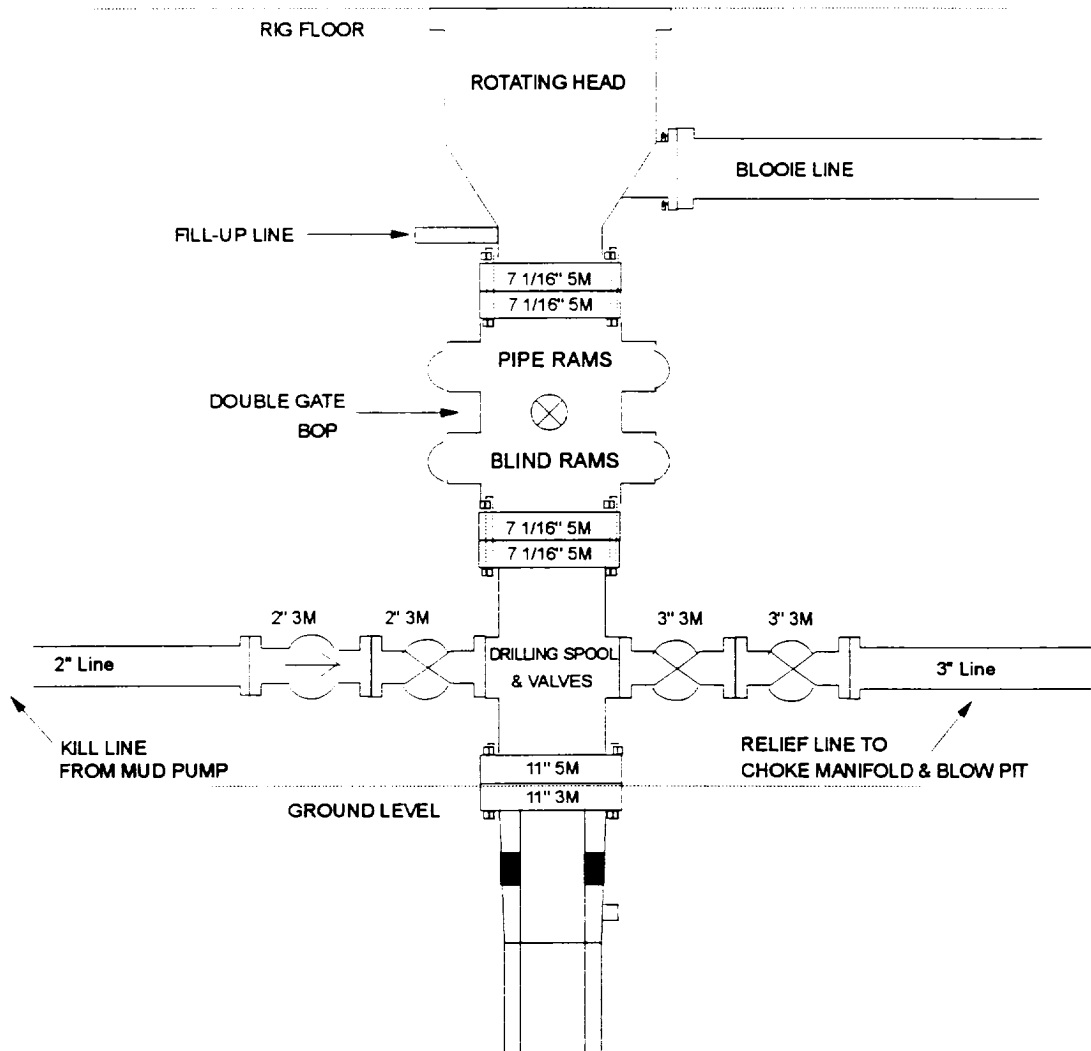
Choke manifold installation from Surface Casing Point to Total Depth. 3,000psi working pressure equipment with two chokes.

Figure #2

**MERIDIAN OIL INC.  
FOUR CORNERS PLATFORM**

**COMPLETION RIG  
BOP CONFIGURATION**

**3M SYSTEM**



Minimum BOP installation for Completion Operations. 7 1/16" Bore (6" Nominal), 5,000 psi minimum working pressure double gate BOP to be equipped with blind and pipe rams.

**FIGURE #3**

03/16/95

**MERIDIAN OIL**  
Ute #28  
Multi-Point Surface Use Plan

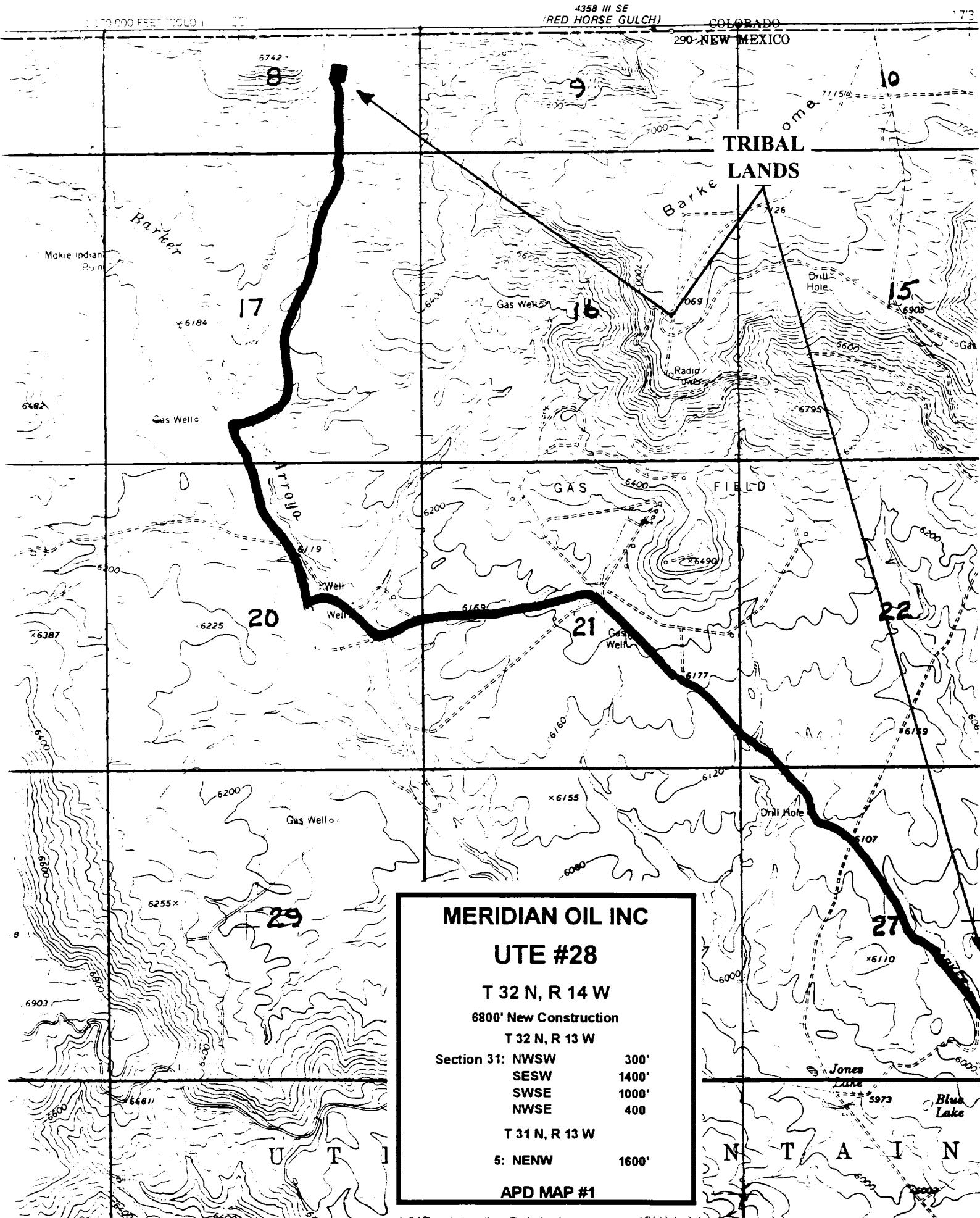
1. Existing Roads - Refer to Map No. 1. Existing roads used to access the proposed location will be properly maintained for the duration of the project. Bureau of Land Management right-of-way has been applied for as shown on Map No. 1.
2. Planned Access Road - Refer to Map No. 1. The required new access road is shown on Map No. 1. The gradient, shoulder, crowning and other design elements will meet or exceed those specified by the responsible government agency. The new access road surface will not exceed twenty feet (20') in width. No additional turnarounds or turnouts will be required. Upon completion of the project, the access road will be adequately drained to control soil erosion. Approximately 6800' of access road will be constructed. Pipelines are indicated on Map No. 1A.
3. Location of Existing Wells - Refer to Map No. 1A.
4. Location of Existing and/or Proposed Facilities if Well is Productive -
  - a. On the Well Pad - Refer to Plat No. 1, anticipated production facilities plat.
  - b. Off the Well Pad - Anticipated facilities off the well pad will be applied for as required.
5. Location and Type of Water Supply - Water will be hauled by truck for the proposed project and will be obtained from Mancos River Bridge located in Section 36, T-33-N, R-16-W, Colorado.
6. Source of Construction Materials - If construction materials are required for the proposed project, such materials will be obtained from a commercial quarry.
7. Methods of Handling Waste Materials - All garbage and trash materials will be removed from the site for proper disposal. A portable toilet will be provided for human waste and serviced in a proper manner. If liquids are left in the reserve pit after completion of the project, the pit will be fenced until the liquids have had adequate time to dry. The location clean-up will not take place until such time as the reserve pit can be properly covered over to prevent run-off from carrying waste materials into the watershed. All reserve pits will be lined with 12 mil bio-degradable plastic liner. All earthen pits will be so constructed as to prevent leakage from occurring; no earthen pit will be located on natural drainage. Generation of hazardous waste is not anticipated. Federal regulations will be adhered to regarding handling and disposal of such waste if so generated.
8. Ancillary Facilities - None anticipated.
9. Wellsite Layout - Refer to the location diagram and to the wellsite cut and fill diagram (Figure No. 4). The blow pit will be constructed with a 2'/160' grade to allow positive drainage to the reserve pit and prevent standing liquids in the blow pit.

10. Plans for Restoration of the Surface - After completion of the proposed project, the location will be cleaned and leveled. The location will be left in such a condition that will enable reseeding operations to be carried out. Seed mixture as designated by the responsible government agency will be used. The reseeding operations will be performed during the time period set forth by the responsible government agency. The permanent location facilities will be painted as designated by the responsible government agency.
11. Surface Ownership - Ute Mountain Ute Tribe.
12. Other Information - Environmental stipulations as outlined by the responsible government agency will be adhered to. Refer to the archaeological report for a description of the topography, flora, fauna, soil characteristics, dwellings, historical and cultural sites.
13. Operator's Representative and Certification - Meridian Oil Regional Drilling Manager, Post Office Box 4289, Farmington, NM 87499, telephone (505) 326-9700. I hereby certify that I, or persons under my direct supervision, have inspected the proposed drill site and access route; that I am familiar with the conditions which presently exist; that the statements made in this plan, are to the best of my knowledge, true and correct; and that the work associated with the operations proposed herein will be performed by Meridian Oil Inc. and its contractors and subcontractors in conformity with this plan and the terms and conditions under which it is approved.

  
Regional Drilling Engineer

3/15/95  
Date

JWC:pb



4358 III SE  
(RED HORSE GULCH)  
COLORADO  
290-NEW MEXICO

TRIBAL  
LANDS

**MERIDIAN OIL INC**

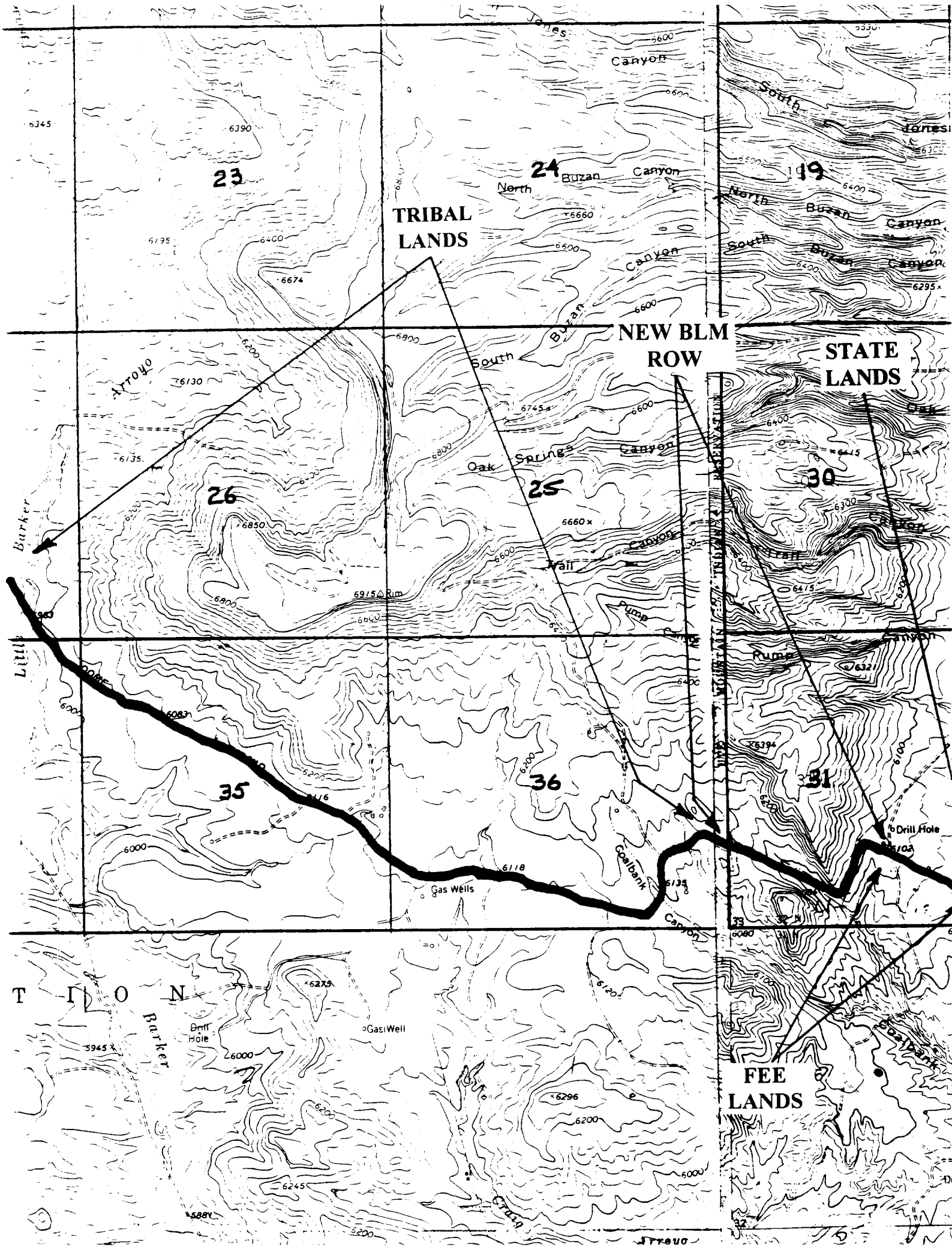
**UTE #28**

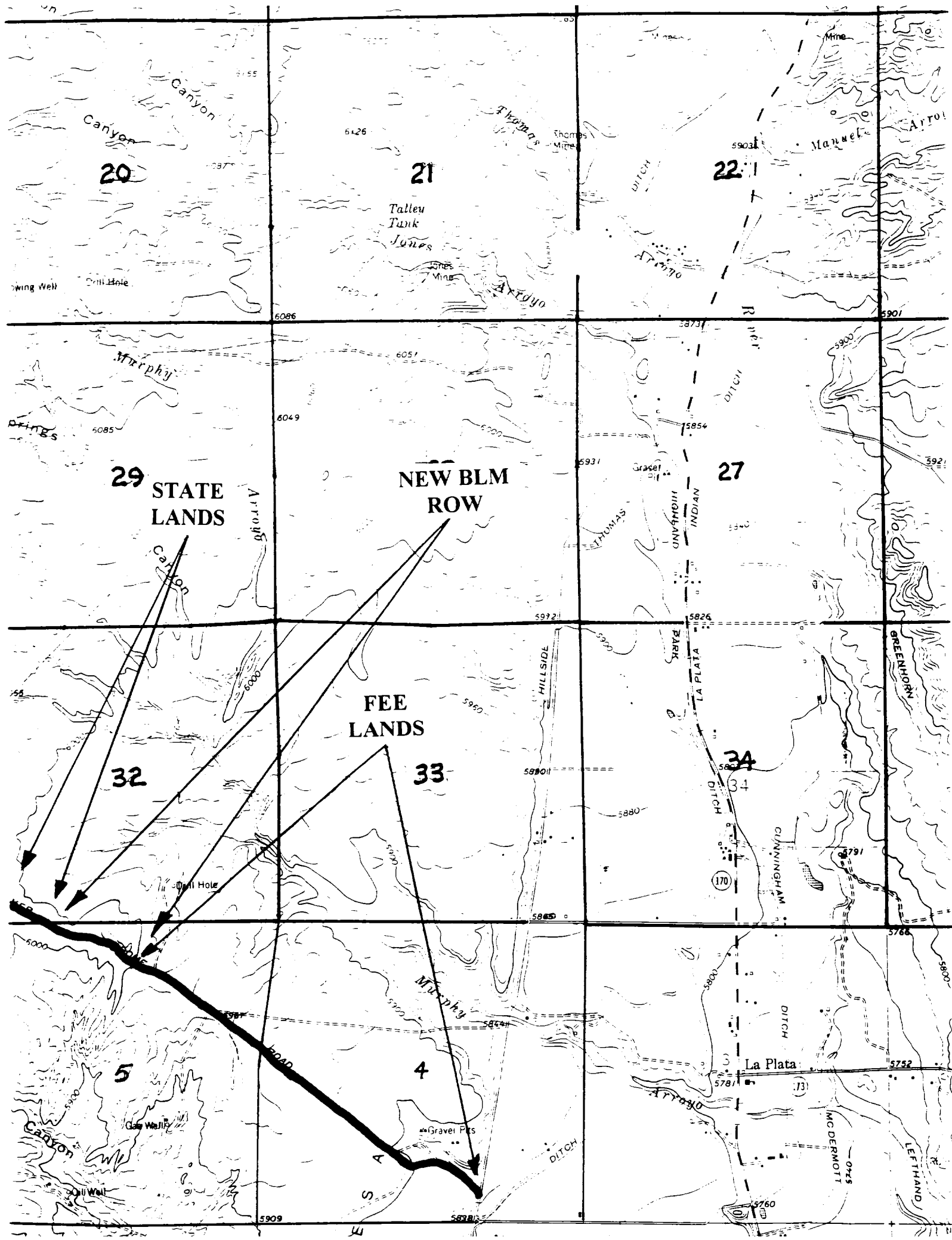
T 32 N, R 14 W  
6800' New Construction

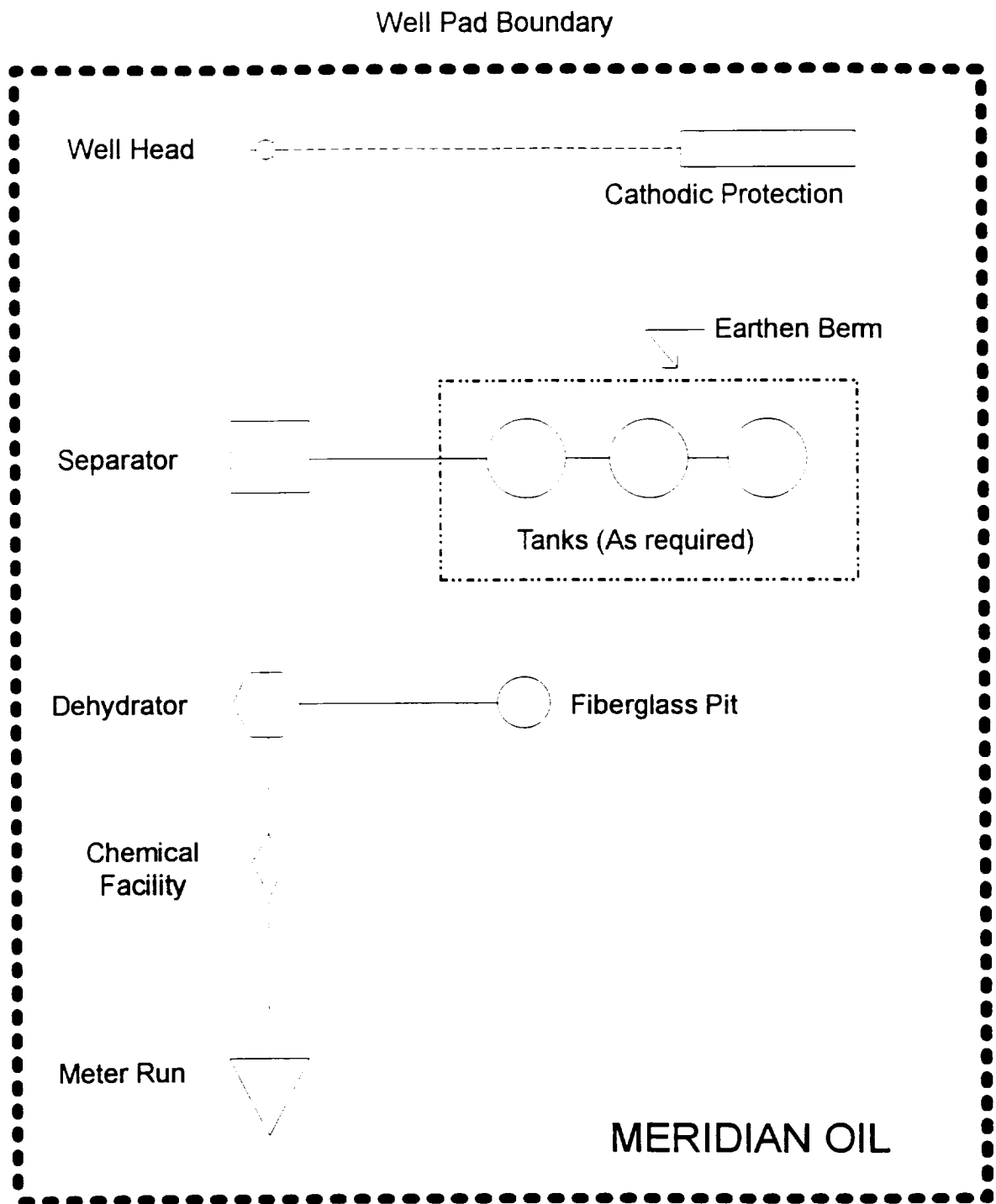
Section 31:	NWSW	300'
	SESW	1400'
	SWSE	1000'
	NWSE	400'

T 31 N, R 13 W  
5: NENW 1600'

APD MAP #1



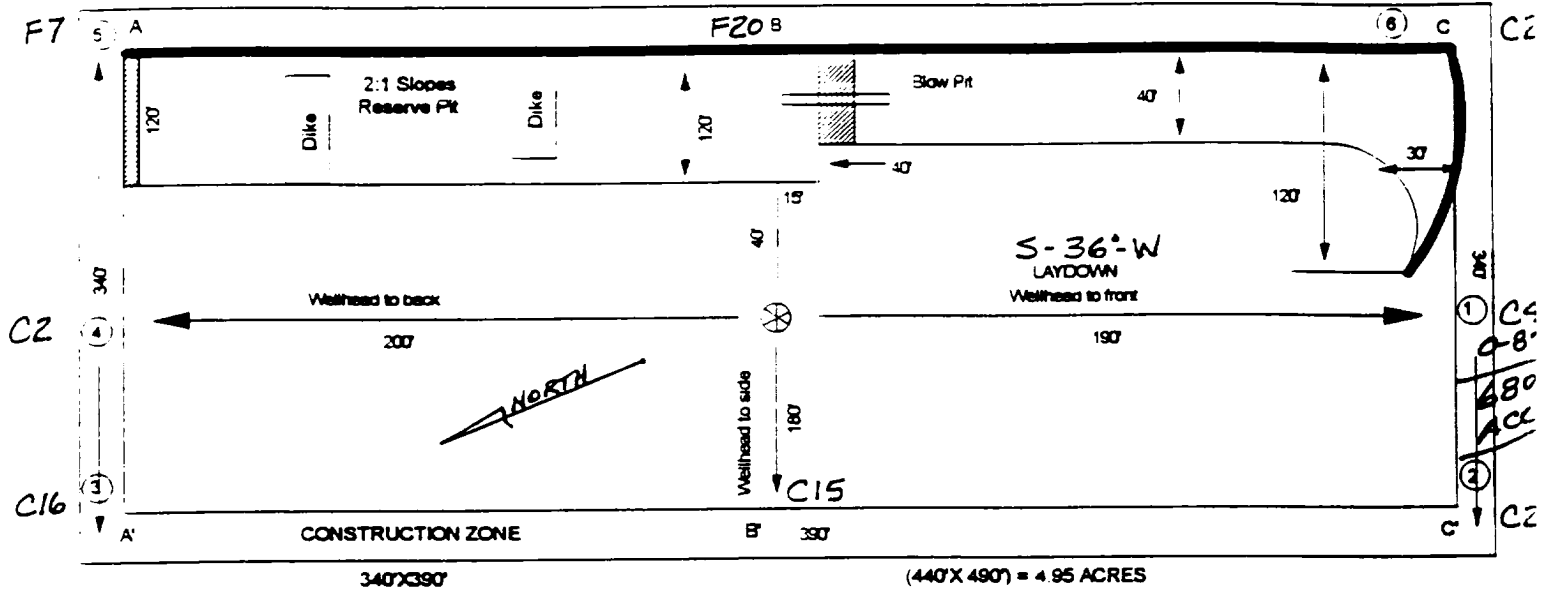




ANTICIPATED  
PRODUCTION FACILITIES  
FOR A  
PARADOX WELL

MERIDIAN PL  
 PLAT #3  
 BARKER DOME  
 HORIZONTALS

NAME: MOI UTE #28  
 FOOTAGE: 1000' FSL 1075' FEL  
 SEC 8 TWN 32 N.R. 14 W NMPM  
 CO: SAN JUAN ST: N.M.  
 ELEVATION: 6283 DATE: 7-22-94

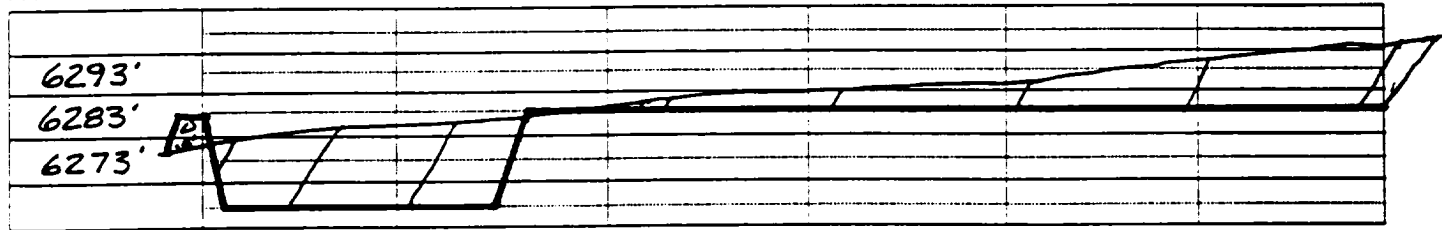


Reserve Pit Dike : to be 8' above Deep side; ( overflow - 3' wide and 1' above shallow side.)

Blow Pit : overflow pipe halfway between top and bottom and extend over plastic liner and into blow pit.

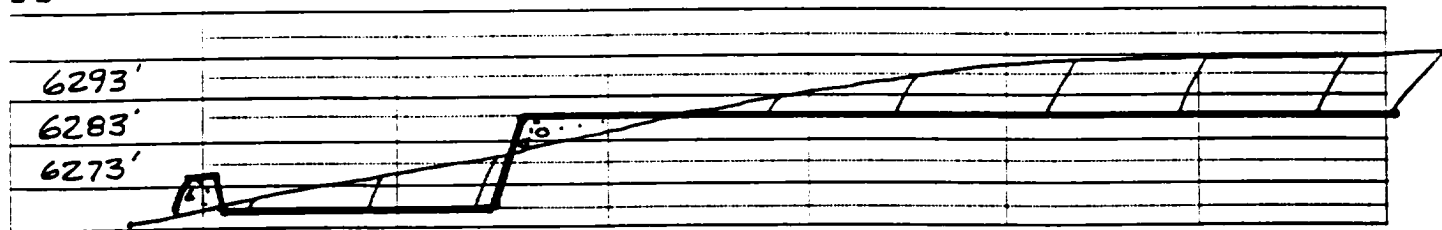
A-A'

C/L



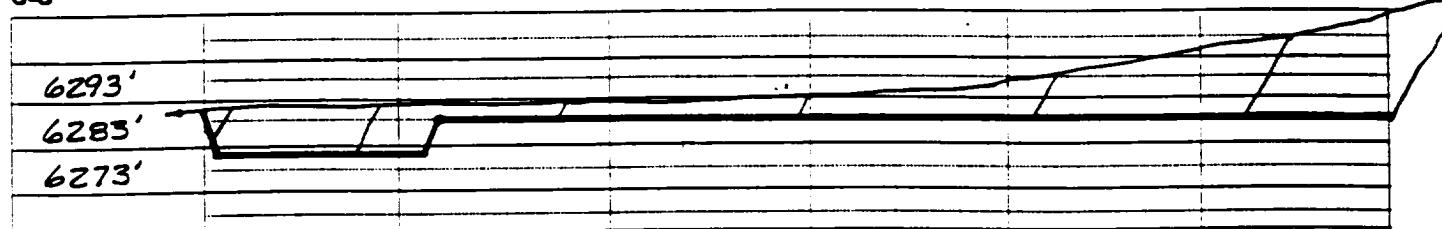
B-B'

C/L

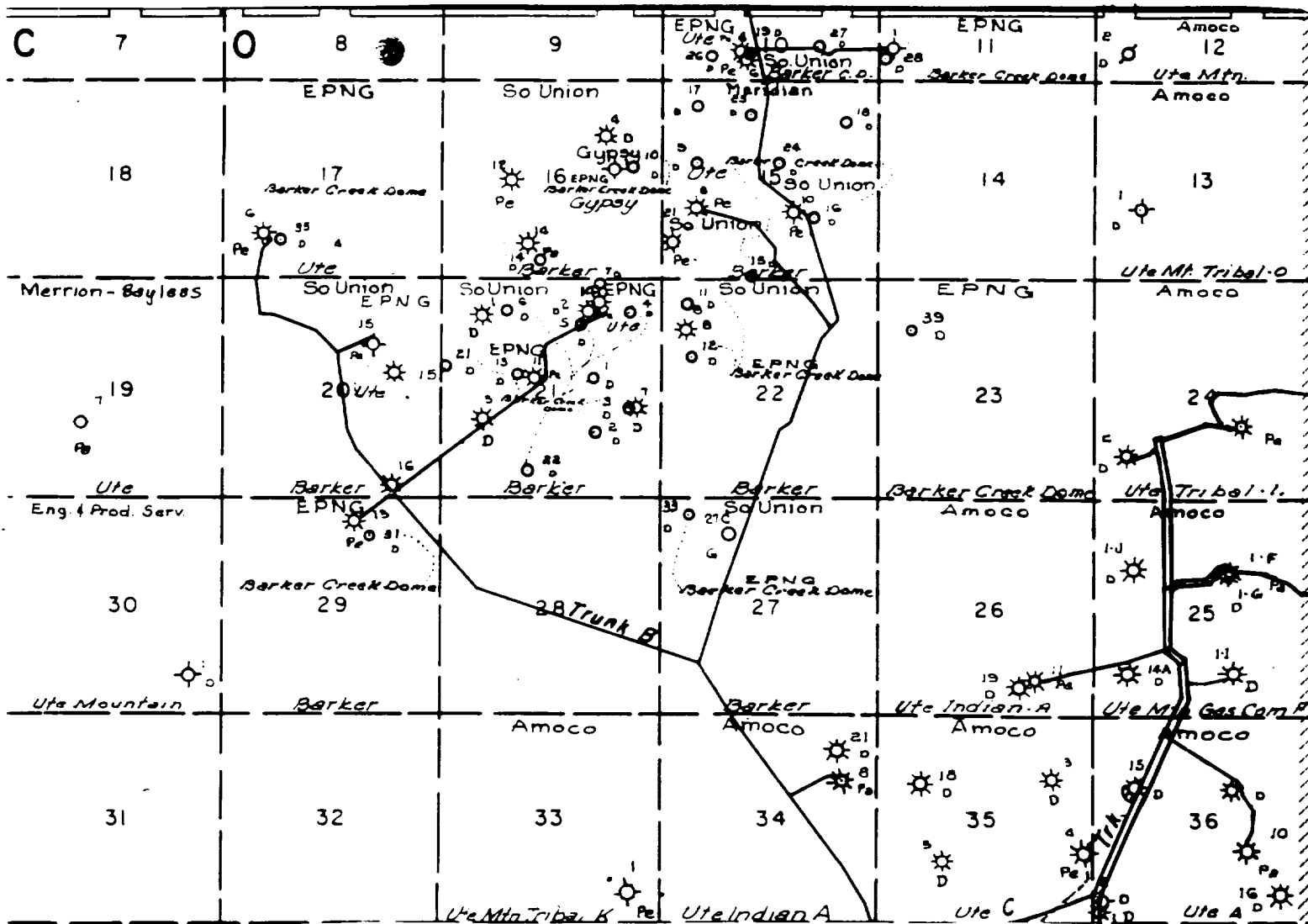


C-C'

C/L



Note: Contractor should call One-Call for location of any marked or unmarked buried pipelines or cables on well pad and/or access road at least 2 working days prior to construction.



MERIDIAN OIL INC.  
 Pipeline Map  
 T-32-N, R-14-W  
 San Juan County, New Mexico  
 Ute #28  
 Map #1A

District I  
PO Box 1988, Hobbs, NM 88241-1988  
District II  
PO Drawer DD, Artesia, NM 88211-0719  
District III  
1000 Rio Hondo Rd., Aztec, NM 87410  
District IV  
PO Box 2088, Santa Fe, NM 87504-2088

State of New Mexico  
Energy, Minerals & Natural Resources Department

OIL CONSERVATION DIVISION  
PO Box 2088  
Santa Fe, NM 87504-2088

Form C-102  
Revised February 21, 1994  
Instructions on back  
Submit to Appropriate District Office  
State Lease - 4 Copies  
Fee Lease - 3 Copies

☐ AMENDED REPORT

WELL LOCATION AND ACREAGE DEDICATION PLAT

API Number 30-045-		Pool Code 96353	Pool Name Barker Dome Desert Creek
Property Code 7618	Property Name Ute		Well Number 28
OGRID No. 14538	Operator Name MERIDIAN OIL INC.		Elevation 6283'

10 Surface Location

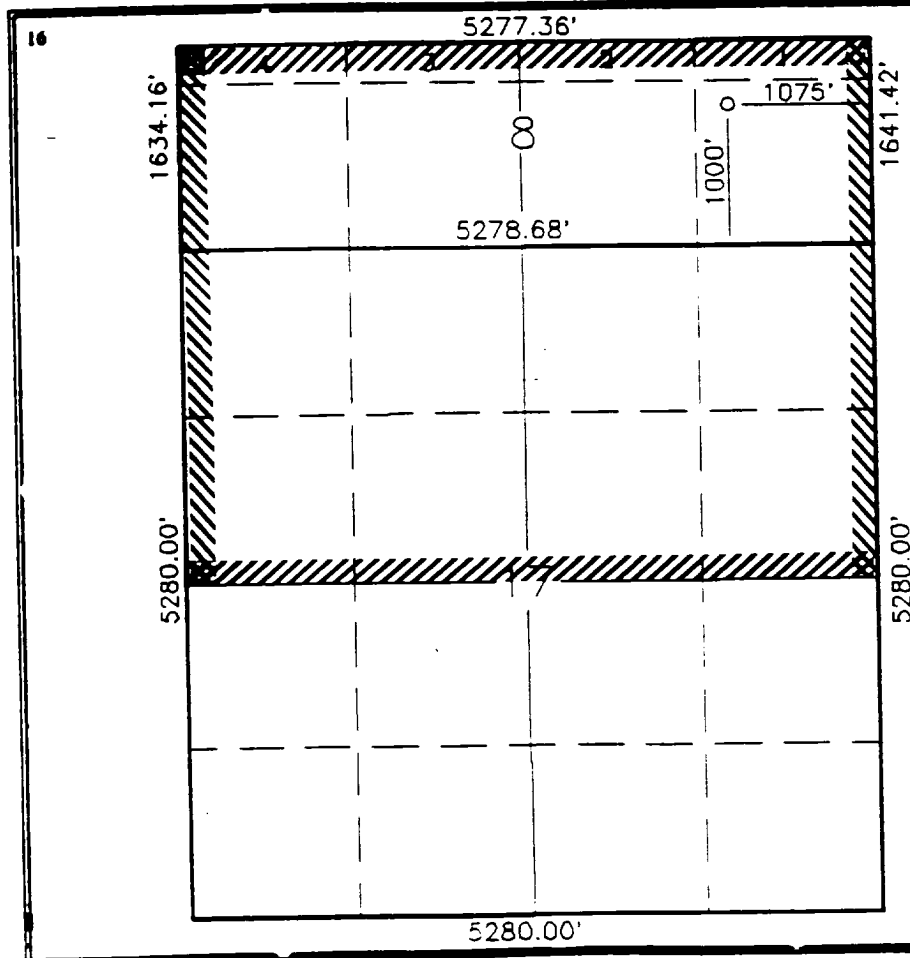
UL or lot no.	Section	Township	Range	Lot Ida	Feet from the	North/South line	Feet from the	East/West line	County
P	8	32 N	14 W		1000	South	1075	East	S.J.

11 Bottom Hole Location If Different From Surface

UL or lot no.	Section	Township	Range	Lot Ida	Feet from the	North/South line	Feet from the	East/West line	County

12 Dedicated Acres	13 Joint or Infill	14 Consolidation Code	15 Order No.
527			

NO ALLOWABLE WILL BE ASSIGNED TO THIS COMPLETION UNTIL ALL INTERESTS HAVE BEEN CONSOLIDATED  
OR A NON-STANDARD UNIT HAS BEEN APPROVED BY THE DIVISION



17 OPERATOR CERTIFICATION

I hereby certify that the information contained herein is true and complete to the best of my knowledge and belief

Signature  
Peggy Bradfield  
Printed Name  
Regulatory Affairs  
Title  
6-1-95  
Date

18 SURVEYOR CERTIFICATION

I hereby certify that the well location shown on this plat was plotted from field notes of actual surveys made by me or under my supervision, and that the same is true and correct to the best of my belief.

11-4-94

Date of Survey

Signature and Seal of Professional Surveyor

HERSCHEL C. EDWARDS  
8837  
6837  
Certification Number

# MERIDIAN OIL INC

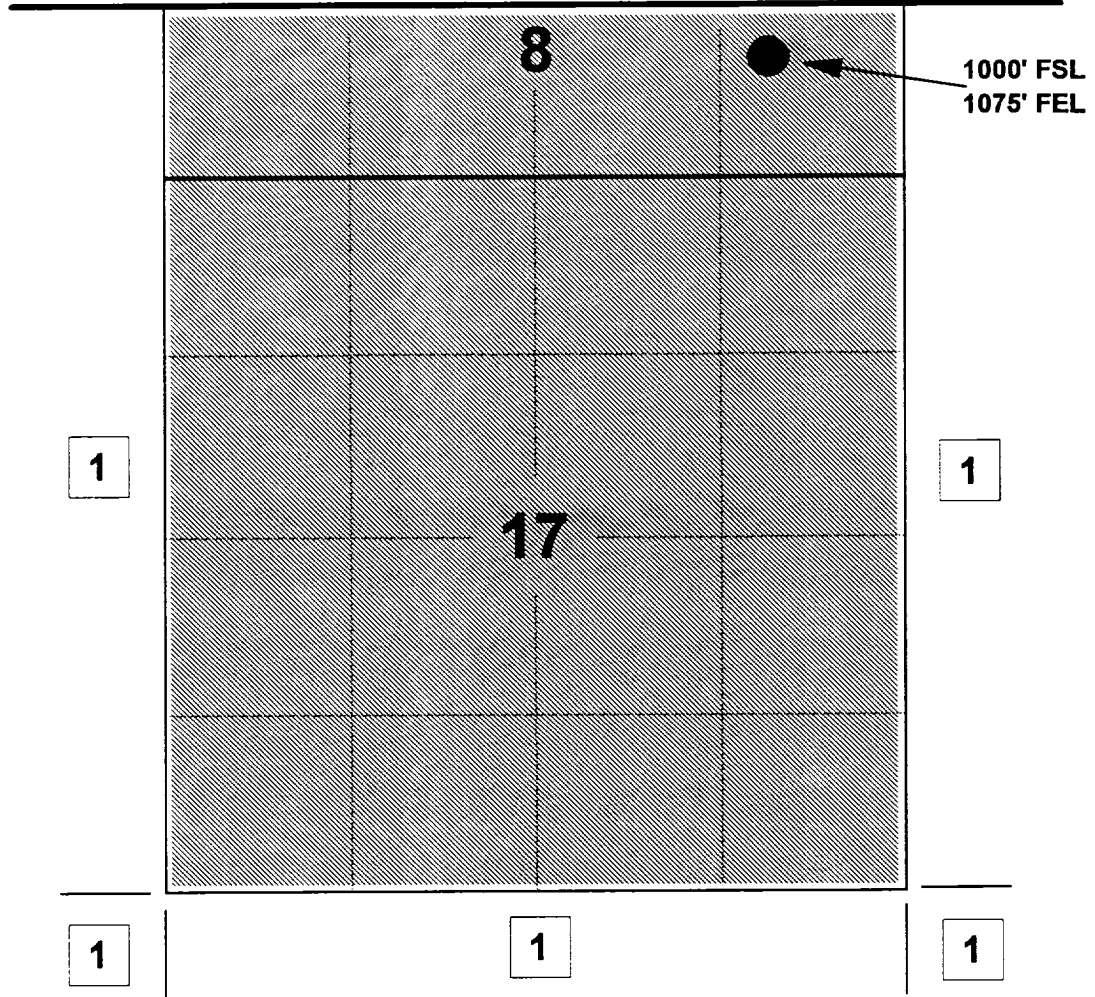
UTE #28

OFFSET OPERATOR \ OWNER PLAT

Unorthodox Barker Creek Paradox Well Location

Township 32 North, Range 14 West

COLORADO



1) Meridian Oil Inc.

---

---

---

---

---

---

---

Topographic map of a section of the Red Horse Gulch area, showing sections 7, 8, 9, 16, 17, 18, 19, 20, 21, 28, 29, and 30. The map includes contour lines, a grid, and various landmarks such as Horse Canyon, Barker, Moki Indian Ruin, Gas Wells, and a Radio Tower. Handwritten numbers 17, 18, 19, 20, 21, 28, 29, and 30 are visible on the map.

Topographic map of a section of the 1170000 FEET (COLO) 20' grid. The map shows contour lines, roads, and various landmarks. Handwritten numbers 7, 8, 17, 18, 19, and 20 are placed in different sections. Key features include Horse Canyon, Mokie Indian Ruin, Barker, Gas Wells, and a Drill Hole. A dashed line runs across the middle of the map.