

UNITED STATES
DEPARTMENT OF THE INTERIOR
BUREAU OF LAND MANAGEMENT

Sundry Notices and Reports on Wells

RECEIVED

APR 17 1996

Bureau of Land Management
Durango, Colorado

1. Type of Well

GAS

2. Name of Operator

MERIDIAN OIL

3. Address & Phone No. of Operator

PO Box 4289, Farmington, NM 87499 (505) 326-9700

4. Location of Well, Footage, Sec., T, R, M

1450' FNL, 1140' FEL, Sec. 16, T-32-N, R-14-W, NMPM

5. Lease Number

I-22-IND-2772

6. If Indian, All. or

Tribe Name

Ute Mountain Ute

7. Unit Agreement Name

8. Well Name & Number

Ute Mountain Ute #38

9. API Well No.

30-045-29357

10. Field and Pool

Barker Dome Desert Creek

11. County and State

San Juan Co, NM

12. CHECK APPROPRIATE BOX TO INDICATE NATURE OF NOTICE, REPORT, OTHER DATA

Type of Submission

Type of Action

☐ Notice of Intent☐ Abandonment☐ Change of Plans☒ Subsequent Report☐ Recompletion☐ New Construction☐ Final Abandonment☐ Plugging Back☐ Non-Routine Fracturing☐ Casing Repair☐ Water Shut off☐ Altering Casing☐ Conversion to Injection☒ Other -

13. Describe Proposed or Completed Operations

Attached is a plat showing rededicated acreage for the subject well as requested by the New Mexico Oil Conservation Division.

ACCEPTED FOR RECORD

By: *DLR* 4-22-96

San Juan Resource Group

Bureau of Land Management

RECEIVED

APR 24 1996

OIL CON. DIV.
DIST. 3

14. I hereby certify that the foregoing is true and correct.

Signed *[Signature]* Title Regulatory Administrator Date 4/16/96

(This space for Federal or State Office use)

APPROVED BY _____ Title _____ Date _____

CONDITION OF APPROVAL, if any:

NMCCD

District I
PO Box 1988, Hobbs, NM 88241-1988
District II
PO Drawer DD, Artesia, NM 88211-0719
District III
1000 Rio Bravo Rd., Aztec, NM 87410
District IV
PO Box 2088, Santa Fe, NM 87504-2088

State of New Mexico
Energy, Minerals & Natural Resources Department

OIL CONSERVATION DIVISION
PO Box 2088
Santa Fe, NM 87504-2088

Form C-1
Revised February 21, 1979
Instructions on back
Submit to Appropriate District Office
State Lease - 4 Copies
Fee Lease - 3 Copies

☐ AMENDED REPORT

WELL LOCATION AND ACREAGE DEDICATION PLAT

| | | | |
|----------------------------|------------------------------------|--------------------|---------------------------------------|
| API Number 30-045-29357 | | Pool Code 96353 | Pool Name Barker Dome Desert Creek |
| Property Code 18725 | Property Name Ute Mtn Ute | | Well Number 38 |
| GRID No. 14538 | Operator Name MERIDIAN OIL INC. | | Elevation 7108' |

10 Surface Location

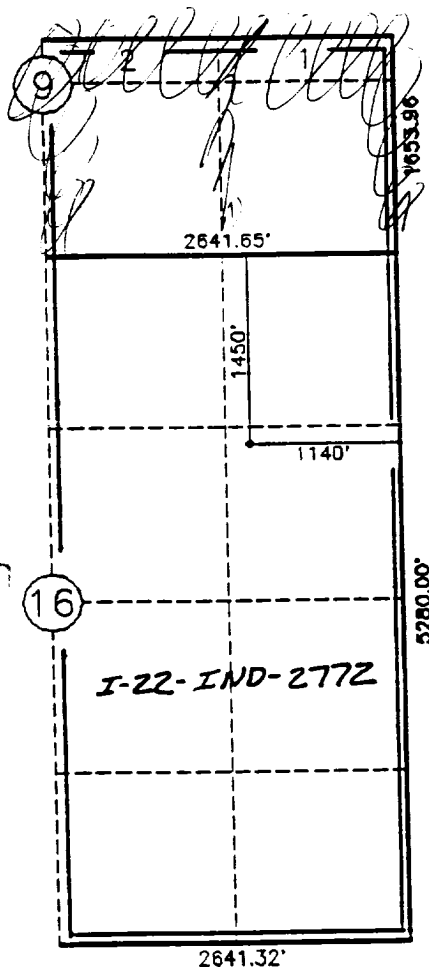
| UL or lot no. | Section | Township | Range | Lot Idn | Feet from the | North/South line | Feet from the | East/West line | County |
|---------------|---------|----------|-------|---------|---------------|------------------|---------------|----------------|--------|
| H | 16 | 32 N | 14 W | | 1450 | North | 1140 | East | S.J. |

11 Bottom Hole Location If Different From Surface

| UL or lot no. | Section | Township | Range | Lot Idn | Feet from the | North/South line | Feet from the | East/West line | County |
|---------------|---------|----------|-------|---------|---------------|------------------|---------------|----------------|--------|
| | | | | | | | | | |

12 Dedicated Acres 12 Joint or Infill 13 Consolidation Code 14 Order No.
E/320 Sec. 16 - E/103.50 Sec. 9

NO ALLOWABLE WILL BE ASSIGNED TO THIS COMPLETION UNTIL ALL INTERESTS HAVE BEEN CONSOLIDATED OR A NON-STANDARD UNIT HAS BEEN APPROVED BY THE DIVISION



17 OPERATOR CERTIFICATION

I hereby certify that the information contained herein is true and complete to the best of my knowledge and belief.

Signature
Peggy Bradfield
Printed Name
Regulatory Administrator
Title
4-16-96
Date

18 SURVEYOR CERTIFICATION

I hereby certify that the well location shown on this plat was plotted from field notes of actual surveys made by or under my supervision, and that the same is true and correct to the best of my belief.

9-13-95
Date of Survey
Signature and Seal of Professional Surveyor
NEALE C. EDWARDS
8857
Certificate Number