

UNITED STATES  
DEPARTMENT OF THE INTERIOR  
BUREAU OF LAND MANAGEMENTFORM APPROVED  
Budget Bureau No. 1004-0136  
Expires: February 28, 1995

## APPLICATION FOR PERMIT TO DRILL OR DEEPEN

1a. Type of Work <b>DRILL</b> <input checked="" type="checkbox"/> <b>DEEPEN</b> <input type="checkbox"/>		5. Lease Designation and Serial No. SF-078818-A
b. Type of Well Oil Well <input type="checkbox"/> Gas Well <input checked="" type="checkbox"/> Other <input type="checkbox"/> Single Well <input checked="" type="checkbox"/> Multiple Zone <input type="checkbox"/>		6. If Indian, Allottee or Tribe Name
2. Name of Operator <b>Merrion Oil &amp; Gas Corporation</b>		7. If Unit or CA, Agreement Designation CA DESIGNATION NOT ASSIGNED YET
3. Address and Telephone No. 610 Reilly Ave Farmington NM 87401 ph: (505) 327-9801		8. Well Name and No. POWELL NO. 1
4. Location of Well (Footages) At Surface 2050' FNL & 790' FEL (se ne) At proposed prod. zone		9. API Well No. 21452
14. Distance in Miles and Directions from Nearest Town or Post Office 5 Miles north of La Plata, NM Post Office		10. Field and Pool, or Exploratory Area BASIN FRUITLAND Coal
15. Distance from Proposed Location to Nearest Property or Lease Line, Ft 590'		11. Sec., T., R., M., or BLK. and Survey or Area H Sec 22, T32N, R13W
16. No. of Acres in Lease 2510.66 acres		12. County or Parish San Juan
17. No. of Acres Assigned to This Well 320 acres		13. State NM
18. Distance from Proposed Location to Nearest Well Drilling, Completed, or Applied for, on this Lease, FT 219'		19. Proposed Depth 678'
20. Rotary or Cable Tools ROTARY		21. Elevations (Show whether DF, RT, GR, etc) 5950' GR
22. Approximate Date Work will Start JULY, 1997		

SIZE OF HOLE	SIZE & GRADE OF CASING	WEIGHT PER FOOT	SETTING DEPTH	QUANTITY OF CEMENT
8-3/4" 8 3/4"	7-5/8" J55	26.4 LB 23	570' approx	138 sx; 163 cuft Surface
6-3/4" 6 3/4"	5-1/2" J55	15.5 LB 10.5	678' approx	None; preperforated uncmtd

Merrion proposes to drill 9-3/4" hole with native mud to approx 570' and set 7-5/8" surface casing cementing to surface with 138 sx 'B' w/ 2% CaCl2 (163 cuft). Will drill 6-3/4" hole to TD @ approx 678' with native mud. Run open hole surveys. Will set 5-1/2" 15.5 # J55 preperforated uncemented production liner from TD to approx. 530'.

Will test Main Fruitland Coal thru preperforated liner. Will Fracture stimulate and put on beam pump for production test. Drilling operations below surface casing will be conducted with a bag type BOP in place, min. working pressure 1000 psig. Additional drilling technical details attached.

DRILLING OPERATIONS AUTHORIZED ARE  
SUBJECT TO COMPLIANCE WITH ATTACHED  
"GENERAL REQUIREMENTS"

RECEIVED  
AUG 13 1997

OIL CON. DIV.  
DIST. 3

IN ABOVE SPACE DESCRIBE PROPOSED PROGRAM: If proposal to deepen, give present productive zone and proposed new productive zone.

COPIES: BLM+4, WELL FILE+1

24. I hereby certify that the foregoing is true and correct

Signed

Steven S. Dunn

Title Drlg & Prod Manager

Date June 12, 1997

(This space for Federal or State office use)

Permit No.

Approval Date

AUG 04 1997

Application approval does not warrant or certify that applicant holds legal or equitable title to those rights in the subject lease which would entitle the applicant to conduct operations thereon.

Conditions of approval, if any:

APPROVED BY:

TITLE

DATE

NMOCD

District I  
PO Box 1980, Hobbs, NM 88241-1980  
District II  
PO Drawer DD, Artesia, NM 88211-0719  
District III  
1000 Rio Brazos Rd., Aztec, NM 87410  
District IV  
PO Box 2088, Santa Fe, NM 87504-2088

State of New Mexico  
Energy, Minerals & Natural Resources Department

OIL CONSERVATION DIVISION  
PO Box 2088  
Santa Fe, NM 87504-2088

Form C-102  
Revised February 21, 1994  
Instructions on back  
Submit to Appropriate District Office  
State Lease - 4 Copies  
Fee Lease - 3 Copies

☐ AMENDED REPORT

WELL LOCATION AND ACREAGE DEDICATION PLAT

1 API Number 30-045-29476		2 Pool Code 71629		3 Pool Name Basin Fruitland Coal	
4 Property Code 21452		5 Property Name Powell			6 Well Number 1
7 OGRID No. 014634		8 Operator Name MERRION OIL & GAS			9 Elevation 5950'

10 Surface Location

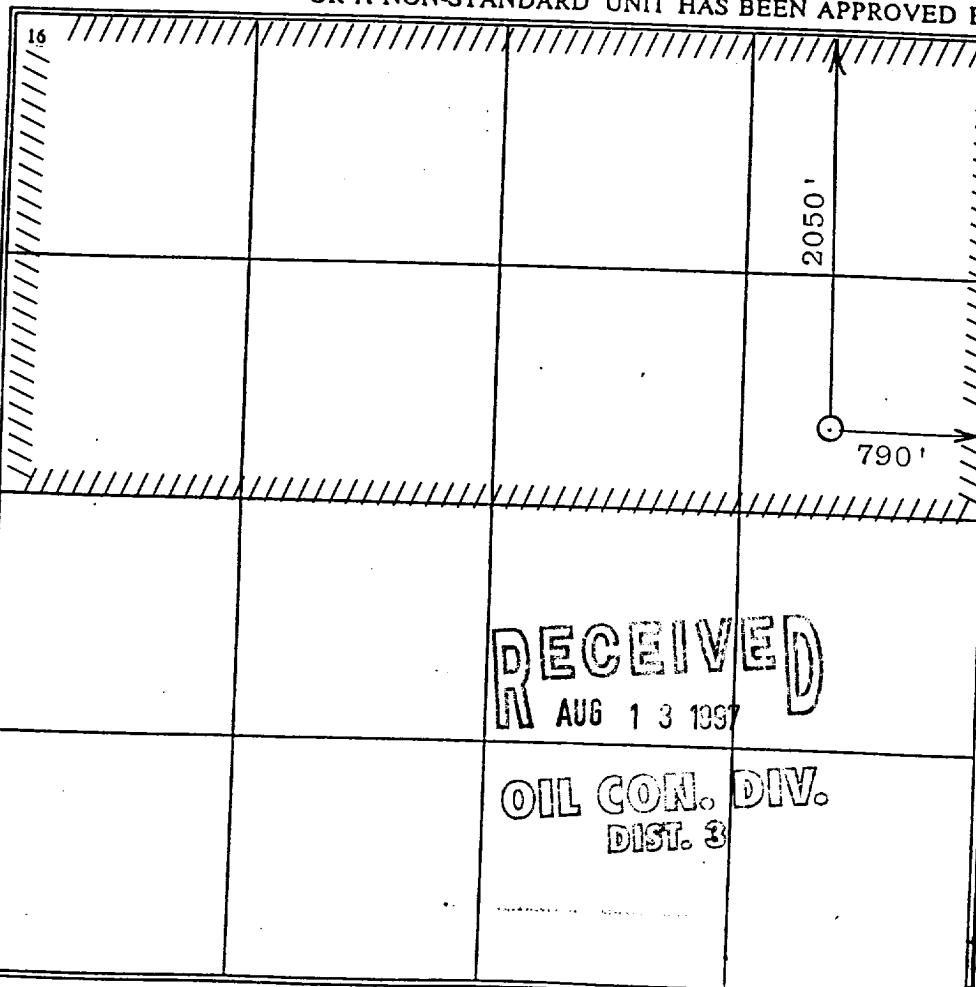
UL or lot no. H	Section 22	Township 32 N	Range 13 W	Lot Idn SENE	Feet from the 2050	North/South line North	Feet from the 790	East/West line East	County San Juan
--------------------	---------------	------------------	---------------	-----------------	-----------------------	---------------------------	----------------------	------------------------	--------------------

11 Bottom Hole Location If Different From Surface

UL or lot no.	Section	Township	Range	Lot Idn	Feet from the	North/South line	Feet from the	East/West line	County
---------------	---------	----------	-------	---------	---------------	------------------	---------------	----------------	--------

12 Dedicated Acres N/320	13 Joint or Infill N	14 Consolidation Code C	15 Order No. NSL FILED, ORDER NOT ISSUED ON APD FILING DATE
-----------------------------	-------------------------	----------------------------	--

NO ALLOWABLE WILL BE ASSIGNED TO THIS COMPLETION UNTIL ALL INTERESTS HAVE BEEN CONSOLIDATED OR A NON-STANDARD UNIT HAS BEEN APPROVED BY THE DIVISION



17 OPERATOR CERTIFICATION

I hereby certify that the information contained herein is true and complete to the best of my knowledge and belief

Signature  
*George F. Sharpe*  
Printed Name  
George F. Sharpe  
Title  
Oil & Gas Investment Manager  
Date  
6/09/97

18 SURVEYOR CERTIFICATION

I hereby certify that the well location shown on this plat was plotted from field notes of actual surveys made by me or under my supervision, and that the same is true and correct to the best of my belief

28 May 1997  
Date of Survey  
Signature and Seal of Professional Surveyor  
6844  
REGISTERED LAND SURVEYOR  
6844  
Certificate Number

RECEIVED  
AUG 13 1997

OIL CON. DIV.  
DIST. 3

# Merrion Oil & Gas Corporation Wellbore Schematic

## Powell No. 1

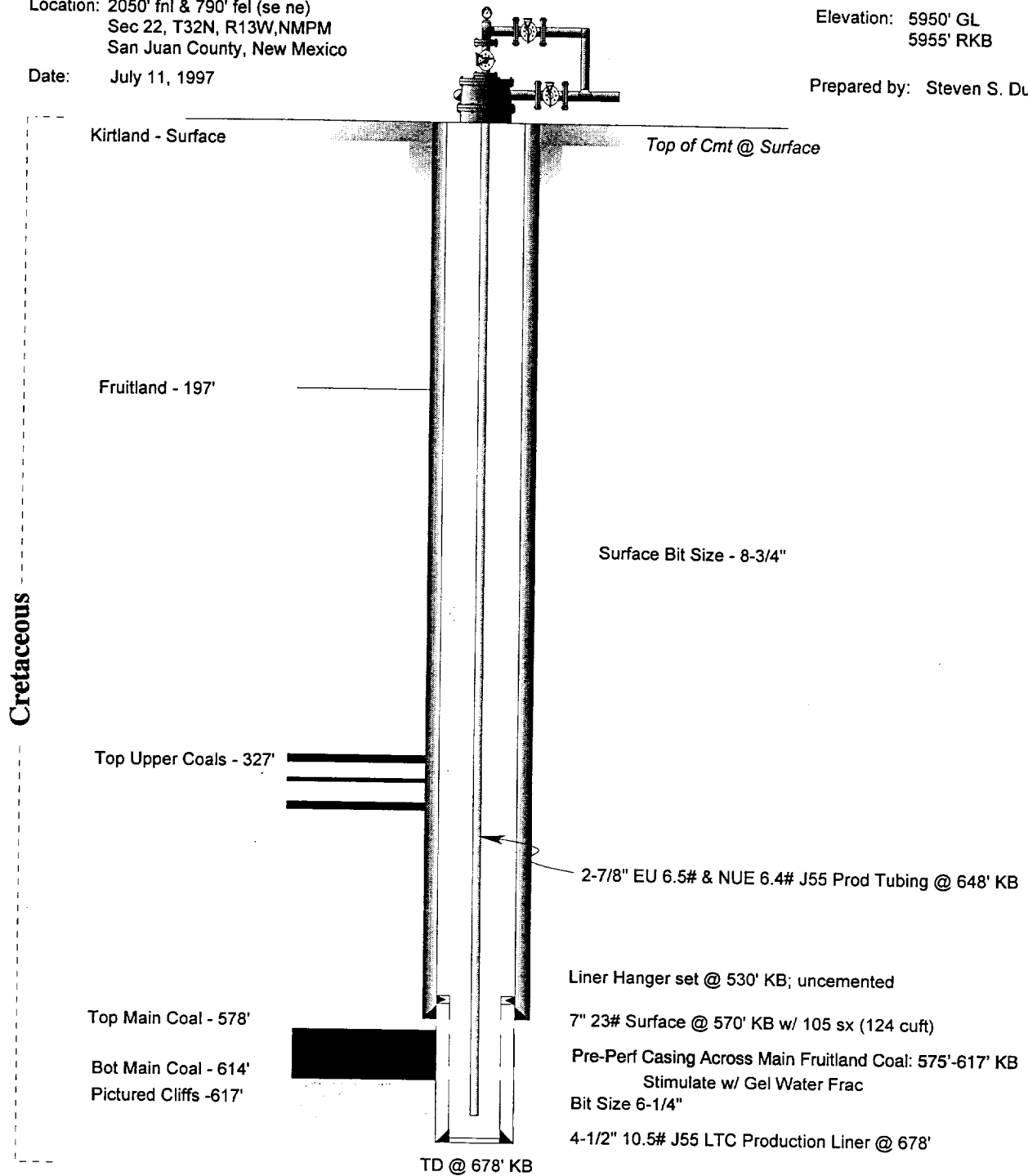
Proposed Revised Wellbore Configuration

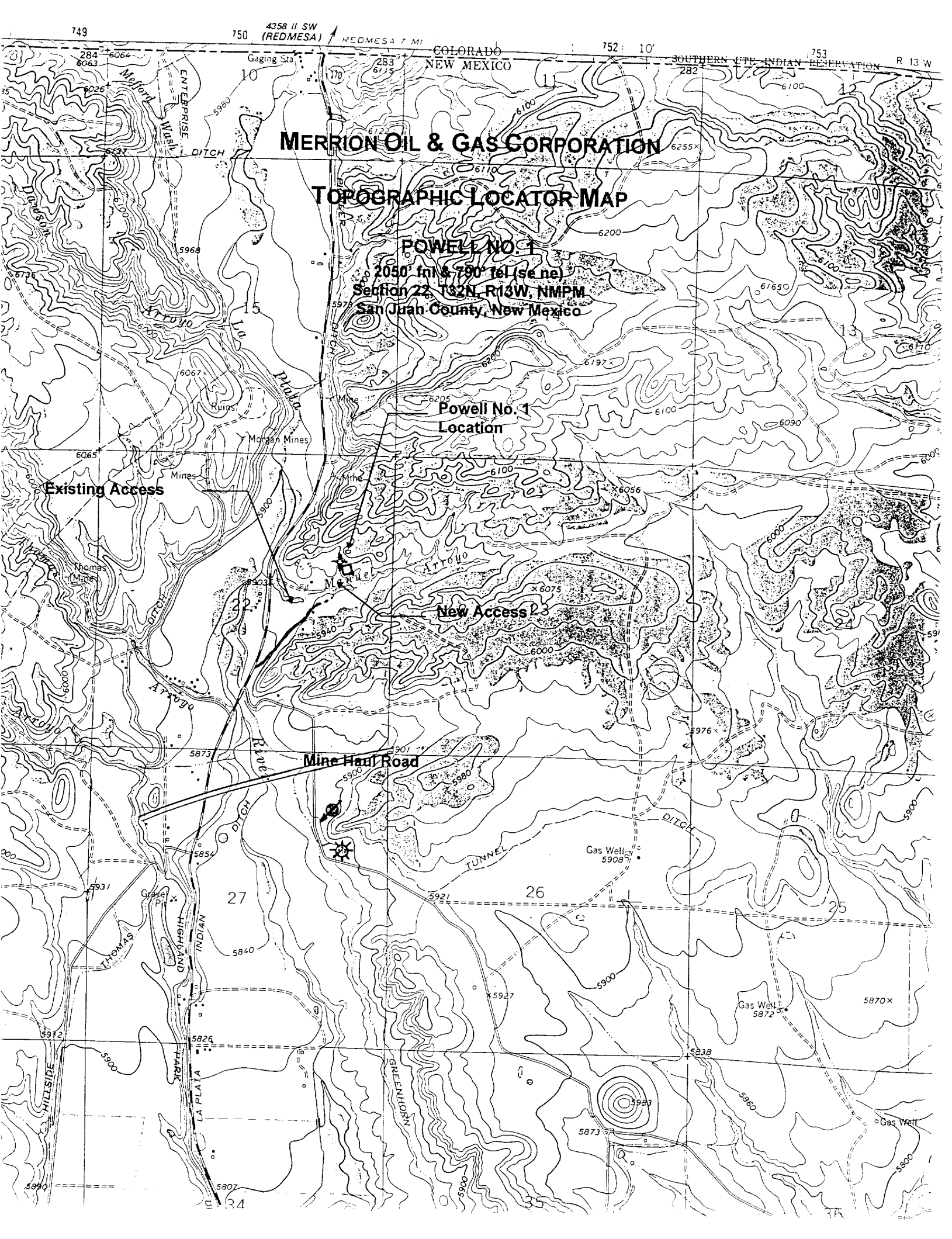
Location: 2050' fnl & 790' fel (se ne)  
Sec 22, T32N, R13W, NMPM  
San Juan County, New Mexico

Date: July 11, 1997

Elevation: 5950' GL  
5955' RKB

Prepared by: Steven S. Dunn





# MERRION OIL & GAS CORPORATION

## TOPOGRAPHIC LOCATOR MAP

### POWELL NO. 1

2050' int & 790' tel (se ne)  
Section 22, T132N, R13W, NMPM  
San Juan County, New Mexico

Powell No. 1  
Location

Existing Access

New Access

Mine Haul Road

Gas Well  
5908

Gas Well  
5872

5838

Gas Well