

UNITED STATES
DEPARTMENT OF THE INTERIOR
BUREAU OF LAND MANAGEMENT

RECEIVED

JUN 18 1997

APPLICATION FOR PERMIT TO DRILL, DEEPEN, OR PLUG BACK

1a. Type of Work DRILL	5. Lease Number 751-95-0000
1b. Type of Well GAS	Unit Reporting Number Durango, Colorado
2. Operator BURLINGTON RESOURCES Oil & Gas Company 14538	6. If Indian, All. or Tribe Ute Mountain Ute
3. Address & Phone No. of Operator PO Box 4289, Farmington, NM 87499 (505) 326-9700	7. Unit Agreement Name
4. Location of Well 820' FNL, 1190' FWL Latitude 36° , Longitude 107°	8. Farm or Lease Name 18725 Ute Mtn Ute
	9. Well Number 48
	10. Field, Pool, Wildcat XXXXXXXXXX Barker Dome Desert Creek EXT 96353 Barker Dome Ismay EXT 96354 Barker Dome Akah/Upper Barker Creek EXT 96352
	11. Sec., Twn, Rge, Mer. (NMPM) D Sec 31, T-32-N, R-14-W API # 30-045-29478
14. Distance in Miles from Nearest Town 7 miles to LaPlata	12. County San Juan
	13. State NM
15. Distance from Proposed Location to Nearest Property or Lease Line 820'	
16. Acres in Lease	17. Acres Assigned to Well N/820' N/320' N/320' N/320'
18. Distance from Proposed Location to Nearest Well, Drlg, Compl, or Applied for on this Lease 1500'	
19. Proposed Depth 9320'	20. Rotary or Cable Tools Rotary
21. Elevations (DF, FT, GR, Etc.) 6856' GR	22. Approx. Date Work will Start Approval of this agreement does not warrant or certify that the operator thereof and other holders of operating rights hold legal or equitable title to those rights in the subject lease which are committed hereto...
23. Proposed Casing and Cementing Program See Operations Plan attached	
24. Authorized by: <u>[Signature]</u> Regulatory/Compliance Administrator	Date 6/13/97

SEE ATTACHED
CONDITIONS OF APPROVAL

Venting / Flaring approved for 30 days
per NTL-4A

PERMIT NO. _____

APPROVAL DATE _____

APPROVED BY Robert Keenhan

TITLE Acting Area Manager

DATE AUG 20 1997

Archaeological Report submitted by LaPlata Archaeology
Threatened and Endangered Species Report submitted by Ecosphere

RECEIVED

HOLD 2-104 FOR DHC ORDER

District I
PO Box 1540, Hobbs, NM 88241-1980
District II
PO Drawer DD, Artesia, NM 88211-0719
District III
1000 Rio Brazos Rd., Aztec, NM 87410
District IV
PO Box 2088, Santa Fe, NM 87504-2088

State of New Mexico
Energy, Minerals & Natural Resources Department

OIL CONSERVATION DIVISION
PO Box 2088
Santa Fe, NM 87504-2088

Form C-102
Revised February 21, 1994
Instructions on back
Submit to Appropriate District Office
State Lease - 4 Copies
Fee Lease - 3 Copies

☐ AMENDED REPORT

WELL LOCATION AND ACREAGE DEDICATION PLAT

API Number 30-045-29478	Pool Code 96352/96353/	Well Name Barker Dome Desert Creek/Barker Dome Ismay/ Barker Dome Akah-Upper Barker Creek/EXT
Property Code 18725	Property Name Ute Mountain Ute	Well Number 48
OGRID No. 14538	Operator Name BURLINGTON RESOURCES OIL & GAS COMPANY	Elevation 6856'

10 Surface Location

UL or lot no.	Section	Township	Range	Lot Idn	Feet from the	North/South line	Feet from the	East/West line	County
D	31	32-N	14-W		820	North	1190	West	S.J.

11 Bottom Hole Location If Different From Surface

UL or lot no.	Section	Township	Range	Lot Idn	Feet from the	North/South line	Feet from the	East/West line	County

12 Dedicated Acres N/320-N/320 N/320	13 Joint or Infill	14 Consolidation Code	15 Order No.

NO ALLOWABLE WILL BE ASSIGNED TO THIS COMPLETION UNTIL ALL INTERESTS HAVE BEEN CONSOLIDATED
OR A NON-STANDARD UNIT HAS BEEN APPROVED BY THE DIVISION

<p>16</p> <p>5274.72'</p> <p>820'</p> <p>1190'</p> <p>UTE 751950008</p> <p>31</p> <p>5280.00'</p>	<p>17 OPERATOR CERTIFICATION</p> <p>I hereby certify that the information contained herein is true and complete to the best of my knowledge and belief.</p> <p><i>Peggy Bradfield</i></p> <p>Signature</p> <p>Peggy Bradfield</p> <p>Printed Name</p> <p>Regulatory Administrator</p> <p>Title</p> <p>6/9/97</p> <p>Date</p>
	<p>18 SURVEYOR CERTIFICATION</p> <p>I hereby certify that the well location shown on this plat was plotted from field notes of actual surveys made by me or under my supervision, and that the same is true and correct to the best of my belief.</p> <p>4/16/97</p> <p>Date of Survey</p> <p>Signature and Seal of Professional Surveyor</p> <p>NEALE C. EDWARDS NEW MEXICO 6857</p> <p>6857</p> <p>Certificate Number</p>

RECEIVED
AUG 22 1997
OIL CON. DIV.
DIST. 3

June 9, 1997

OPERATIONS PLAN

Well Name: Ute Mtn Ute #48
Location: 820' FNL, 1190' FWL Section 31, T-32-N, R-14-W
San Juan County, NM
Formation: Wildcat Hermosa; Barker Dome Desert Creek; Barker Dome
Ismay; Barker Dome Akah/Upper Barker Creek
Elevation: 6856' GR

Formation:	Top	Bottom	Contents
Surface	Menefee	1576'	
Mancos	1576'	2449'	
8 5/8" surface casing	1826'		+ 250' into Mancos
Niobrara	2449'	3099'	
Greenhorn	3099'	3163'	
Graneros	3163'	3231'	
Dakota	3231'	3447'	gas
Morrison	3447'	3988'	fresh water
Junction Creek	3988'	4327'	salt water
Summerville	4327'	4422'	
Entrada	4422'	5062'	salt water
Chinle	5062'	6042'	
Cutler	6042'	7684'	
Hermosa	7684'	8724'	
Ismay	8724'	8895'	gas (potentially 100-1580 ppm H ₂ S)
Desert Creek	8895'	9022'	gas (potentially 4-11,900 ppm H ₂ S)
Akah	9022'	9191'	
Upper Barker Creek	9191'		gas (potentially 0-12,000 ppm H ₂ S)
Total Depth	9320'		

Logging Program:

Mud logs - Niobrara to Total Depth

Wireline Logs - AIT-SP-GR-Cal, Micro-SP-GR-Cal, FMI TD to surface csg

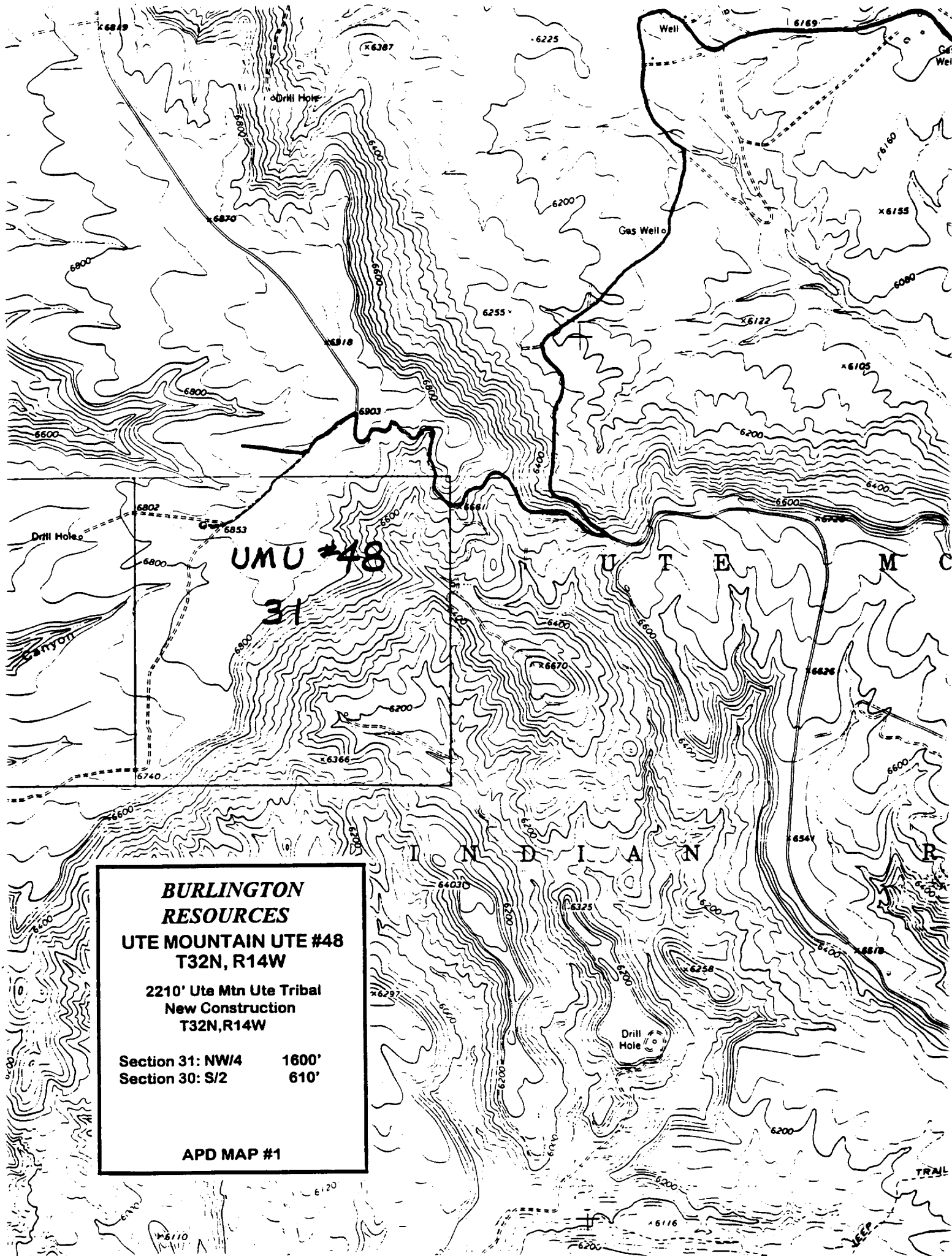
Mud Program:

Interval	Type	Weight	Vis	Fluid Loss
0 - SCP	Spud	8.4-8.9	40	No Control
SCP-T.Ismay	Fresh Water	8.4-8.6	26-30	No Control
T.Ismay-TD	LSND/Dispersed	8.4-9.0	36-50	Less than 12

Casing Program: (all casing will be new)

Hole Size	Depth Interval	Csq. Size	Wt.	Grade
12 1/4"	0' - 1826'	8 5/8"	24.0#	K-55 LT&C
7 7/8"	0' - 9320'	5 1/2"	17.0#	L-80 LT&C

Tubing Program: 0' - 9320' 2 7/8" tubing



**BURLINGTON
RESOURCES
UTE MOUNTAIN UTE #48
T32N, R14W**

**2210' Ute Mtn Ute Tribal
New Construction
T32N, R14W**

**Section 31: NW/4 1600'
Section 30: S/2 610'**

APD MAP #1