



NEW MEXICO ENERGY, MINERALS
& NATURAL RESOURCES DEPARTMENT

OIL CONSERVATION DIVISION
2040 South Pacheco Street
Santa Fe, New Mexico 87505
(505) 827-7131

November 3, 1997

RECEIVED
NOV - 6 1997

OIL CON. DIV.
DIST. 3

Burlington Resources Oil & Gas Company
P.O. Box 4289
Farmington, New Mexico 87499-4289
Attention: Peggy Bradfield

Administrative Order NSL-3892(NSP)

Dear Ms. Bradfield:

Reference is made to the following: (i) your initial application to William J. LeMay, Division Director, dated June 30, 1997; (ii) the Division's response to said application by letter from Mr. Michael E. Stogner dated July 27, 1997; (iii) your response by letter dated August 26, 1997; (iv) two additional inquiries by Mr. Stogner by e-mail dated October 30, 1997; (v) your faxed response of October 31, 1997; and, (vi) to the records of the Division in Santa Fe: all of which concern Burlington Resources Oil & Gas Company's ("Burlington") request to drill the proposed Ute Mountain Ute Well No. 44 (API No. 30-045-29498) 190 feet from the South line and 2355 feet from the West line (Unit N) of irregular Section 9, Township 32 North, Range 14 West, NMPM, San Juan County, New Mexico, in order to test the Pennsylvanian System, which in this instance, includes the Hermosa formation and the Barker Dome-Ismay, Barker Dome-Desert Creek, and Barker Dome-Akah/Upper Barker Creek Pools, for gas production.

THE DIVISION DIRECTOR FINDS THAT:

- (1) The application has been duly filed under the provisions of Rule 104.F of the General Rules and Regulations of the New Mexico Oil Conservation Division ("Division");
- (2) The requested unorthodox gas well location is due to topographic conditions, the presence of archaeology, and at the request of the Ute Mountain Ute Indian Tribe for minimum surface disturbance in the immediate area;
- (3) For the Hermosa interval:
 - (a) the proposed Ute Mountain Ute Well No. 44 is not currently located within a designated Hermosa producing pool nor is it within two miles of such a designated pool; therefore, said well can be properly classified as a "wildcat" Hermosa gas well that is located outside of the surface outcropping of the Pictured Cliffs formation and is subject to Rule 104.B(2)(b)(ii) of the Division's General Rules and Regulations for "deep wildcat gas wells" in San Juan County, New Mexico gas wells, which provides for 160-acre gas spacing and proration units and requires that wells be located no closer than 790 feet from the outer boundary of the spacing and proration nor closer than 130 feet from any governmental quarter-quarter section line or subdivision inner boundary;

(b) said Section 9, being irregular in size, contains 205 total acres, more or less, the SW/4 equivalent in which said well is entitled to have dedicated to it in the Hermosa interval comprises 102.5 acres, more or less, which is approximately 64% of a standard 160-acre unit; therefore, Division General Rule 104.D(2)(a), which requires at least 70% of 160 acres, does not apply in this instance; and,

(c) it will therefore be necessary that any order issued in this matter contain authorization for approval of said non-standard 102.5-acre, more or less, gas spacing and proration unit for the Hermosa interval;

(4) For the **Ismay** interval:

(a) the proposed Ute Mountain Ute Well No. 44 is within the boundary of the Barker Dome-Ismay Pool and is therefore subject to the "*Special Rules and Regulations for the Barker Dome-Ismay Pool*," as promulgated by Division Order No. R-46-A, dated February 13, 1995, as amended by Division Order Nos. R-46-B, dated November 6, 1996, and R-46-C, dated April 3, 1997, which includes provisions for 160-acre gas spacing and proration units with wells to be located no closer than 790 feet from the outer boundary of the proration and spacing unit nor closer than 130 feet from any governmental quarter-quarter section line or subdivision inner boundary; and,

(b) Division Order No. R-46-B further provided for a 205-acre non-standard gas spacing and proration unit comprising all of said irregular Section 9 to be established for Barker Dome-Ismay Pool gas production [see Decretory Paragraph No. (2) of said Order No. R-46-B];

(5) For the **Desert Creek** interval:

(a) the proposed Ute Mountain Ute Well No. 44 is within the boundary of the Barker Dome-Desert Creek Pool and is therefore subject to the "*Special Rules and Regulations for the Barker Dome-Desert Creek Pool*," as promulgated by said Division Order No. R-46-A, as amended by said Division Order Nos. R-46-B and R-46-C, which includes provisions for 320-acre gas spacing and proration units with wells to be located no closer than 790 feet from the outer boundary of the proration and spacing unit nor closer than 130 feet from any governmental quarter-quarter section line or subdivision inner boundary; and,

(b) said Division Order No. R-46-B also provided for a 525-acre non-standard gas spacing and proration unit comprising all of said irregular Section 9 and the N/2 of Section 16, Township 32 North, Range 14 West, NMPM, San Juan County, New Mexico to be established for Barker Dome-Desert Creek Pool gas production [see

Decretory Paragraph No. (2) of said Order No. R-46-B];

(6) For the Akah/Upper Barker Creek interval:

(a) the proposed Ute Mountain Ute Well No. 44 is within the boundary of the Barker Dome-Akah/Upper Barker Creek Pool and is therefore subject to the "*Special Rules and Regulations for the Barker Dome-Akah/Upper Barker Creek Pool*," as promulgated by said Division Order No. R-46-A, as amended by said Division Order Nos. R-46-B and R-46-C, which, like the Desert Creek interval, includes provisions for 320-acre gas spacing and proration units with wells to be located no closer than 790 feet from the outer boundary of the proration and spacing unit nor closer than 130 feet from any governmental quarter-quarter section line or subdivision inner boundary; and,

(b) said Division Order No. R-46-B also provided for a 525-acre non-standard gas spacing and proration unit comprising all of said irregular Section 9 and the N/2 of said Section 16 to be established for Barker Dome-Desert Creek Pool gas production [see Decretory Paragraph No. (2) of said Order No. R-46-B];

(7) All of irregular Section 9 and all of Section 16, Township 32 North, Range 14 West, NMPM, San Juan County, New Mexico are included in a single Ute Mountain Ute tribal lease (Lease No. I-22-IND 2772) in which Burlington is the operator; therefore, there are no affected off set operators other than themselves; and,

(8) Pursuant to Division General Rules 104.F(2) and 104.D(2) and Rule 5 of the "*Special Rules and Regulations for the Barker Dome-Ismay Pool*," Rule 5 of the "*Special Rules and Regulations for the Barker Dome-Desert Creek Pool*," and Rule 5 of the "*Special Rules and Regulations for the Barker Dome-Akah/Upper Barker Creek Pool*," the unorthodox gas well location of Burlington's Ute Mountain Ute Well No. 44, as described above, in the Hermosa formation and the Barker Dome-Ismay, Barker Dome-Desert Creek, and Barker Dome-Akah/Upper Barker Creek Pools and the aforementioned 102.5-acre non-standard gas spacing and proration unit for Hermosa gas production comprising the SW/4 equivalent of said irregular Section 9 should be approved at this time.

IT IS THEREFORE ORDERED THAT:

(1) Burlington Resources Oil & Gas Company's ("Burlington") is hereby authorized to drill its Ute Mountain Ute Well No. 44 (**API No. 30-045-29498**) at an unorthodox gas well location 190 feet from the South line and 2355 feet from the West line (Unit N) of irregular Section 9, Township 32 North, Range 14 West, NMPM, San Juan County, New Mexico, in order to test the Pennsylvanian System, which includes the Hermosa formation and the Barker Dome-Ismay, Barker Dome-Desert Creek, and Barker Dome-Akah/Upper Barker Creek Pools, for gas production.

(2) For the Hermosa formation, the 102.5-acre, more or less, non-standard gas spacing and

proration unit comprising the SW/4 equivalent of said irregular Section 9, herein approved, is to be dedicated to said well.

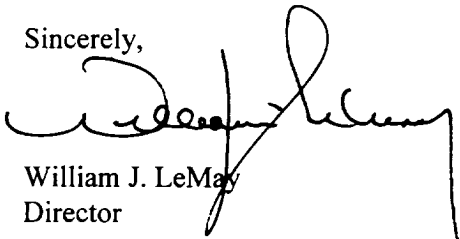
(3) For the Barker Dome-Ismay Pool, the previously approved 205-acre non-standard gas spacing and proration unit comprising all of said irregular Section 9 is to be dedicated to said well.

(4) For the Barker Dome-Desert Creek Pool, the previously approved 525-acre non-standard gas spacing and proration unit comprising all of said irregular Section 9 and the N/2 of Section 16, Township 32 North, Range 14 West, NMPM, San Juan County, New Mexico is to be dedicated to said well.

(5) For the Barker Dome Akah/Upper Barker Creek Pool, the previously approved 525-acre non-standard gas spacing and proration unit comprising all of said irregular Section 9 and the N/2 of said Section 16, is to be dedicated to said well.

(6) Jurisdiction of this cause is retained for the entry of such further orders as the Division may deem necessary.

Sincerely,



William J. LeMay
Director

WJL/MES/kv

cc: New Mexico Oil Conservation Division - Aztec /
U. S. Bureau of Land Management - Durango, Colorado
File: Case 11089

BURLINGTON RESOURCES

SAN JUAN DIVISION

June 30, 1997

Sent Federal Express

Mr. William LeMay
New Mexico Oil Conservation Division
2040 South Pacheco
Santa Fe, New Mexico 87505

Re: Ute Mountain Ute #44
190'FSL, 2355'FWL, Section 9, T-32-N, R-14-W
API # 30-045 (not yet assigned)

RECEIVED
JUL - 9 1997
OIL CON. DIV.
DIST. 3

Dear Mr. LeMay:

Burlington Resources is applying for administrative approval of a non-standard location for the above location in the Hermosa, Desert Creek, Ismay, Akah/Upper Barker Creek formations. This application for the referenced location is due to terrain, the presence of archaeology and at the request of the Ute Mountain Ute Tribe for minimum surface disturbance.

The following attachments are for your review:

1. Application for Permit to Drill.
2. Completed C-102 at referenced location.
3. Offset operators/owners plat - Burlington is the offset operator
4. 7.5 minute topographic map showing the orthodox windows, and enlargement of the map to define topographic features.

We appreciate your earliest consideration of this application.

Sincerely,




Peggy Bradfield
Regulatory/Compliance Representative

xc: NMOCD - Aztec District Office

UNITED STATES
DEPARTMENT OF THE INTERIOR
BUREAU OF LAND MANAGEMENT

APPLICATION FOR PERMIT TO DRILL, DEEPEN, OR PLUG BACK

1a. Type of Work DRILL	5. Lease Number I-22-IND-2772
1b. Type of Well GAS	6. If Indian, All. or Tribe Ute Mountain Ute
2. Operator BURLINGTON RESOURCES Oil & Gas Company	7. Unit Agreement Name
3. Address & Phone No. of Operator PO Box 4289, Farmington, NM 87499 (505) 326-9700	8. Farm or Lease Name Ute Mtn Ute 9. Well Number 44
4. Location of Well 190' FSL, 2355' FWL Latitude 36° 59.8, Longitude 108° 18.9	10. Field, Pool, Wildcat Wildcat Hermosa Barker Dome Desert Creek Barker Dome Ismay Barker Dome Akah/Upper Barker Creek 11. Sec., Twn, Rge, Mer. (NMPM) Sec 9, T-32-N, R-14-W API # 30-045-
14. Distance in Miles from Nearest Town 6 miles to LaPlata	12. County San Juan
	13. State NM
15. Distance from Proposed Location to Nearest Property or Lease Line 190'	
16. Acres in Lease	17. Acres Assigned to Well 320/160
18. Distance from Proposed Location to Nearest Well, Drlg, Compl, or Applied for on this Lease 3500'	
19. Proposed Depth 9120'	20. Rotary or Cable Tools Rotary
21. Elevations (DF, FT, GR, Etc.) 6867'	22. Approx. Date Work will Start
23. Proposed Casing and Cementing Program See Operations Plan attached	
24. Authorized by:  (Regulatory/Compliance Administrator)	6/18/97 Date

PERMIT NO. _____ APPROVAL DATE _____

APPROVED BY _____ TITLE _____ DATE _____

Archaeological Report submitted by LaPlata Archaeology
Threatened and Endangered Species Report submitted by Ecosphere

District I
PO Box 1980, Hobbs, NM 88241-1980
District II
PO Drawer DD, Artesia, NM 88211-0719
District III
1000 Rio Brazos Rd., Aztec, NM 87410
District IV
PO Box 2088, Santa Fe, NM 87504-2088

State of New Mexico
Energy, Minerals & Natural Resources Department

OIL CONSERVATION DIVISION
PO Box 2088
Santa Fe, NM 87504-2088

Form C-102
Revised February 21, 1994
Instructions on back
Submit to Appropriate District Office
State Lease - 4 Copies
Fee Lease - 3 Copies

☐ AMENDED REPORT

WELL LOCATION AND ACREAGE DEDICATION PLAT Wildcat Hermosa

API Number 30-045-		Pool Code 96352/96353/		Pool Name Barker Dome Desert Creek/Barker Dome Isma Barker Dome Akah/Upper Barker Creek/	
Property Code 18725	Property Name Ute Mountain Ute			Well Number 44	
OGRID No. 14538	Operator Name BURLINGTON RESOURCES OIL & GAS COMPANY			Elevation 6867'	

¹⁰ Surface Location

UL or lot no.	Section	Township	Range	Lot Idn	Feet from the	North/South line	Feet from the	East/West line	County
N	9	32-N	14-W		190	South	2355	West	S.J.

¹¹ Bottom Hole Location If Different From Surface

UL or lot no.	Section	Township	Range	Lot Idn	Feet from the	North/South line	Feet from the	East/West line	County

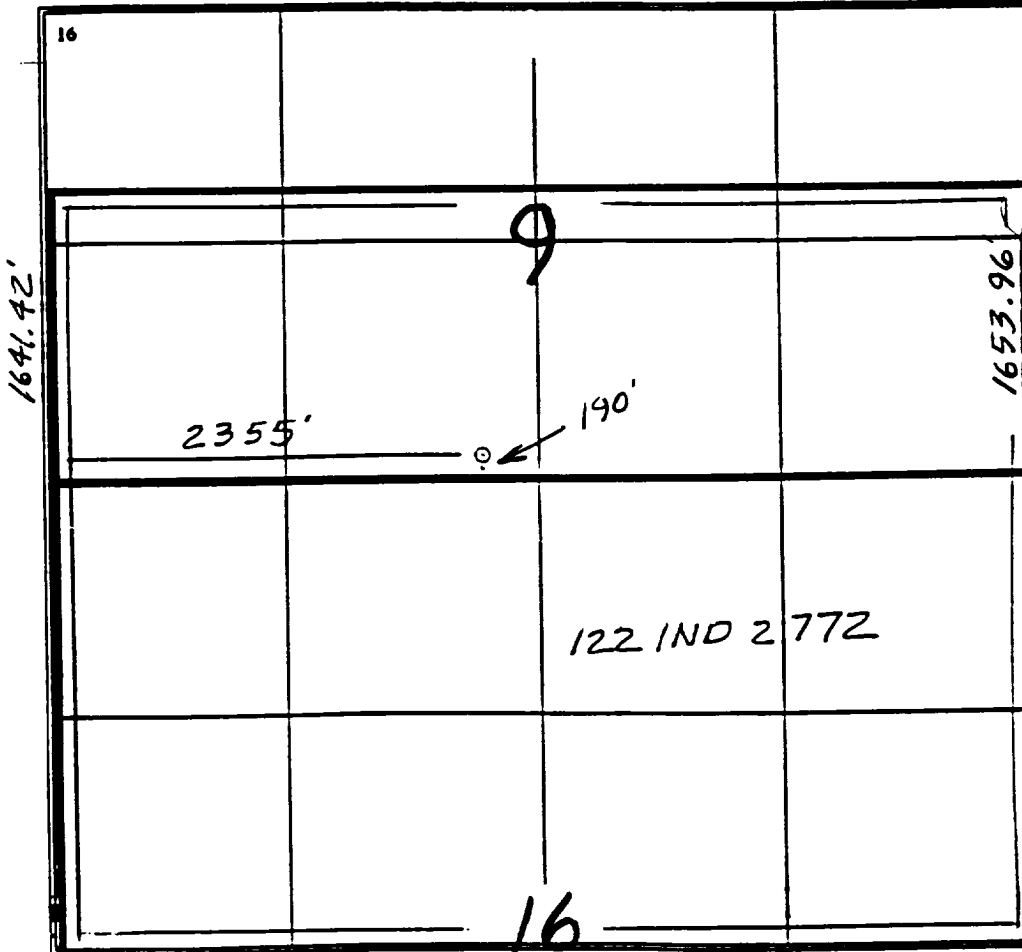
¹² Dedicated Acres
525/160
825/205

¹³ Joint or Infill

¹⁴ Consolidation Code

¹⁵ Order No.

NO ALLOWABLE WILL BE ASSIGNED TO THIS COMPLETION UNTIL ALL INTERESTS HAVE BEEN CONSOLIDATED
OR A NON-STANDARD UNIT HAS BEEN APPROVED BY THE DIVISION



¹⁷ OPERATOR CERTIFICATION

I hereby certify that the information contained herein is true and complete to the best of my knowledge and belief

Peggy Bradford
Signature
Peggy Bradford
Printed Name
Regulatory Administrator
Title
6-18-97
Date

¹⁸ SURVEYOR CERTIFICATION

I hereby certify that the well location shown on this plat was plotted from field notes of actual surveys made by me or under my supervision, and that the same is true and correct to the best of my belief.

4/16/97

Date of Survey

Signature and Seal of Professional Surveyor
Neale C. Edwards
NEALE C. EDWARDS
NEW MEXICO
6887
6857
Certificate Number

June 20, 1997

OPERATIONS PLAN

Well Name: Ute Mtn Ute #44 \.
Location: 190' FSL, 2355' FWL Section 9, T-32-N, R-14-W
San Juan County, NM
Formation: Wildcat Hermosa; Barker Dome Desert Creek; Barker Dome
Ismay; Barker Dome Akah/Upper Barker Creek
Elevation: 6867' GR

Formation:	Top	Bottom	Contents
Surface	Menefee	2198'	
Niobrara	2198'	2844'	
Greenhorn	2844'	2904'	
Graneros	2904'	2971'	
Dakota	2971'	3209'	gas
Morrison	3209'	3741'	fresh water
Junction Creek	3741'	4088'	salt water
Summerville	4088'	4182'	
Entrada	4182'	4830'	salt water
Chinle	4830'	5770'	
Cutler	5770'	7359'	
Hermosa	7359'	8519'	
Ismay	8519'	8706'	gas (potentially 100-1580 ppm H ₂ S)
Desert Creek	8706'	8810'	gas (potentially 4-11,900 ppm H ₂ S)
Akah	8810'	8986'	
Upper Barker Creek	8986'		gas (potentially 0-12,000 ppm H ₂ S)
Total Depth	9120'		

Logging Program:

Mud logs - Niobrara to Total Depth

Wireline Logs - AIT-SP-GR-Cal, Micro-SP-GR-Cal, FMI TD to surface csg

Mud Program:

<u>Interval</u>	<u>Type</u>	<u>Weight</u>	<u>Vis</u>	<u>Fluid Loss</u>
0 - SCP	Spud	8.4-8.9	40	No Control
SCP-T.Ismay	Fresh Water	8.4-8.6	26-30	No Control
T.Ismay-TD	LSND/Dispersed	8.4-9.0	36-50	Less than 12

Casing Program: (all casing will be new)

<u>Hole Size</u>	<u>Depth Interval</u>	<u>Csq. Size</u>	<u>Wt.</u>	<u>Grade</u>
12 1/4"	0' - 1398'	8 5/8"	24.0#	K-55 LT&C
7 7/8"	0' - 9120'	5 1/2"	17.0#	L-80 LT&C

Tubing Program: 0' - 9120' 2 7/8" tubing

Pressure Control Program:

12 1/4" hole - diversion only

7 7/8" hole - a 3000 psi WP casinghead will be installed on the surface casing. A 3000 psi WP annulus preventer, a 3000 psi WP double gate preventer equipped with blind and pipe rams, and a 3000 psi x 3000 psi WP drilling spool with kill and choke lines will be nipples up on the casinghead. The annulus preventer will be tested to 500 psi low, 1500 psi high w/test plug for 15 minutes. Pipe and blind rams, choke line, and manifold will be tested at 500 psi low and 3000 psi high with a test plug for 15 minutes. Casing will be tested to 2200 psi (75% burst) prior to drilling the shoe.

Completion - a 5000 psi WP tubinghead will be installed on the production casing. A 5000 psi WP double gate preventer equipped with blind and pipe rams and a 5000 psi drilling spool equipped with kill and choke lines will be nipples up on the tubinghead. One 7" blooie line will be nipples up above the BOP's. A rotating head will be nipples up on top of the blooie line. Pipe and blind rams, choke line, and manifold will be tested at 500 psi and 4000 psi against casing. Casing will be tested to 4000 psi prior to completing well.

BOP systems will be consistent with API RP 53. Pressure tests will be conducted before drilling out from under all casing strings which are set and cemented in place. Blow out preventer controls will be installed prior to drilling the surface casing plug and will remain in use until the well is completed or abandoned. All tests will be reported on the daily drilling report. Preventers will be tested before drilling casing cement plugs.

In the event that a kick is taken while drilling, the following procedure will be followed:

1. Pick up kelly and raise the tool joint above floor.
2. Shut down the mud pump.
3. Close the annular preventer.
4. Record standpipe pressure (SIDPP) after it stabilizes and pit gain.
5. Calculate Initial Circulating Pressure=Slow Circulating Pressure+ SIDPP.
6. Calculate kill mud weight required.
7. Complete kill sheet.
8. Decide whether to raise mud weight or drill under-balanced.

BOP Configuration:

12 1/4" surface hole - 0' - 1398' - diverter only

3000 psi system

7 7/8" production hole - 1398' - 9120' - Figures #1 & #2

Float Equipment:

Surface casing - guide shoe, float collar, centralizers every 4th joint.
Production casing - float shoe, float collar, centralizers every 4th joint.

Wellhead Equipment (sour gas service):

11" 3000 psi x 8 5/8" female thread casinghead
11" 3000 psi x 7 1/16" 5000 psi tubinghead
7 1/16" 5000 psi x 2 7/8" 5000 psi adapter
Tree assembly for single completion gas service.

Cementing:

8 5/8" surface casing - cement with 585 sx Class "B" 65/35 Pozmix with 0.25 pps flocele, 6% gel and 2% calcium chloride (12.4 ppg, 1036 cu.ft. of slurry). Tail with 100 sx Class "B" neat with 0.25 pps and 2% calcium chloride (15.6 ppg weight; 118 cu.ft. of slurry), 100% excess circulated to surface.

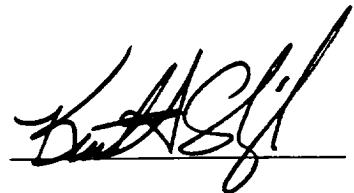
5 1/2" production - 1181 sx 50/50 Class "B" blended Silicalite, 3 pps gilsonite, 0.375 pps flocele (11.45 ppg, 2751 cu.ft. of slurry.) Tail with 310 sx Class "G" 50/50 Poz with 2% gel, 5 pps gilsonite, 0.25 pps flocele, and 0.4% Halad-344 (13.5 ppg, 410 cu.ft. of slurry), 100% excess circulated to surface.

5 1/2" production (Alternative two stage cement job) - Cement with stage tool @ 7259'. First stage - cement with 542 sx Class "G" with 0.2% FRC-3, 0.25 pps flocele, 0.3% Halad-344 (15.8 ppg, 645 cu.ft. of slurry), 100% excess to top of stage tool. Second stage - cement with 1421 sx 65/35 Class "B" Pozmix with 6% gel, 5 pps gilsonite, 1.25 pps flocele (12.6 ppg, 2516 cu.ft. of slurry), 100% excess circulated to surface.

Coring & Drill Stem Test Program: A 60' conventional core will be cut from 8932-8992' in the Lower Akah formation.

Anticipated abnormal pressures or temperatures: none. Anticipated bottom hole pressure is 3600 psi.

Date: 6/23/97

Drilling Engineer: 

Anticipated potentially hazardous conditions:

1. H₂S is anticipated to exist from the Paradox (Ismay) formation to Total Depth.
2. Anticipated concentrations are estimated at 300 - 500 ppm.
3. All gasses encountered will be flared.
4. H₂S safety equipment will be operational at 1000' above Paradox (Ismay) formation.
5. H₂S safety equipment will be provided for all personnel on location at all times.
6. All personnel on location will be H₂S certified.
7. An H₂S trained professional will be on location at all pertinent times; i.e., DST's, cementing operations, under-balanced drilling, etc.
8. The toxicity of H₂S gas is as follows:

1 ppm = .0001% (1/10,000 of 1%)	Can smell.
10 ppm = .001% (1/1000 of 1%)	Allowable for 8 hrs. exposure
50 ppm = .005% (5/1000 of 1%)	NOTE: when H ₂ S concentration reaches 10 ppm on the rig floor, call for the safety trailer.
100 ppm = .01% (1/100 of 1%)	Kills smell rapidly. Burns eyes and throat.
500 ppm = .05% (5/100 of 1%)	Loses sense of reasoning and balance. Respiratory disturbances in 2-15 min. Needs prompt artificial resuscitation.
700 ppm = .07% (7/100 of 1%)	Will become unconscious quickly. Breathing will stop and death will result if not rescued promptly.
1,000 ppm = .10% (1/10 of 1%)	Unconscious at once. PERMANENT BRAIN DAMAGE MAY RESULT UNLESS RESCUED PROMPTLY.

H₂S Drilling Operations Plan

1. Training Program - Burlington Resources will ensure all personnel have been properly H₂S trained as per API RP 49 prior to three days or 1000 feet prior to penetrating the Pennsylvanian. An initial training session and weekly H₂S and well control drills for all personnel in each working crew will be conducted. Each training session and drill will be recorded on the drillers log. Two briefing areas will be designated and located at least 150 feet from the wellbore. One such briefing area will be upwind of the well at all times. A contract safety company will be designated and identified to all personnel on-site as responsible for on-site safety and training programs.
2. Protective Equipment - Burlington Resources will ensure respiratory protection equipment program is implemented as per ANSI 2.88.2-1980. Proper breathing apparatus will be readily accessible for all essential personnel, meaning one working breathing apparatus including a five minute escape-type SCBA for the derrickman, available for all essential personnel. The following additional safety equipment will be available for use:
 - a. Effective means of communication when using breathing apparatus.
 - b. A flare gun and flares to ignite well.
 - c. A telephone, radio, mobile phone or other device that provides communication from a safe area, where practical.
3. H₂S Detection and Monitoring Equipment
 - a. Drilling - will be three sensing points (shale shaker, rig floor, bell nipple) with rapid response sensors capable of sensing a minimum of 10 ppm of H₂S, in ambient air, which automatically activates visible and audible alarms at levels or threshold limits of 10 and 15 ppm, respectively.

Completion - same as above except sensors will be located at the rig floor, cellar, and shale shaker or circulating tank.

Workover - will have one sensor operational as close to the wellbore as possible.
 - b. All tests on H₂S monitoring system will be recorded on drillers log.
4. Visible Warning System
 - a. Wind direction indicators (drilling (2); completion/workover (1)) will be located at separate elevations with one indicator clearly visible at all times from principle working areas. The wind indicator will be clearly visible from the briefing areas or additional indicators will be installed at such areas.
 - b. Operation Danger or Caution signs will be displayed along all controlled accesses to the site. each sign will be painted high visibility red, black, and white or yellow with black lettering. Signs will be large enough to be read by all persons entering the wellsite and be placed a minimum of 200 feet but no more than 500 feet from the wellsite.

c. The sign(s) will read "DANGER - POISON GAS - HYDROGEN SULFIDE" and in smaller lettering, "Do not approach if red flag is flying".

d. When H_2S is detected in excess of 10 ppm, red flag(s) will be displayed and visible to all personnel approaching the location under normal lighting and weather conditions.

5. Warning System Response - H_2S detected above 10 ppm will initiate all non-essential personnel to be moved to a safe area and all essential personnel to don breathing apparatus.

BURLINGTON RESOURCES

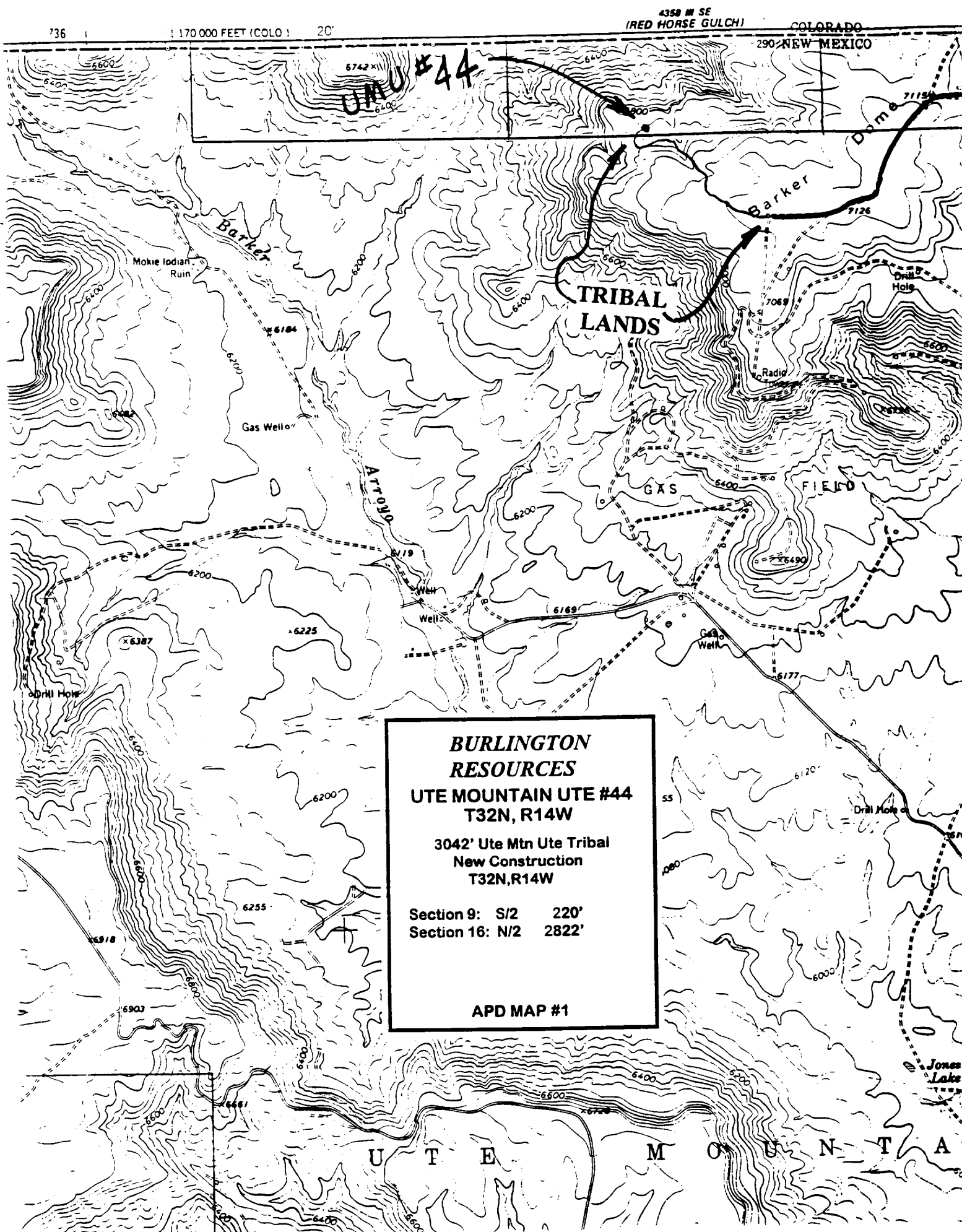
Ute Mountain Ute #44 Multi-Point Surface Use Plan

1. Existing Roads - Refer to Map No. 1. Existing roads used to access the proposed location will be properly maintained for the duration of the project. Bureau of Indian Affairs right-of-way has been applied for as shown on Map No. 1.
2. Planned Access Road - Refer to Map No. 1. The required new access road is shown on Map No. 1. The gradient, shoulder, crowning and other design elements will meet or exceed those specified by the responsible government agency. The new access road surface will not exceed twenty feet (20') in width. No additional turnarounds or turnouts will be required. Upon completion of the project, the access road will be adequately drained to control soil erosion. Approximately 3042' of access road will be constructed. Pipelines are indicated on Map No. 1A.
3. Location of Existing Wells - Refer to Map No. 1A.
4. Location of Existing and/or Proposed Facilities if Well is Productive -
 - a. On the Well Pad - Refer to Plat No. 1, anticipated production facilities plat.
 - b. Off the Well Pad - Anticipated pipeline facilities as shown on the attached plat from Western Gas Resources.
5. Location and Type of Water Supply - Water will be hauled by truck for the proposed project and will be obtained from Riverside Park located SE Section 8, T-30-N, R-11-W, New Mexico.
6. Source of Construction Materials - If construction materials are required for the proposed project, such materials will be obtained from a commercial quarry.
7. Methods of Handling Waste Materials - All garbage and trash materials will be removed from the site for proper disposal. A portable toilet will be provided for human waste and serviced in a proper manner. If liquids are left in the reserve pit after completion of the project, the pit will be fenced until the liquids have had adequate time to dry. The location clean-up will not take place until such time as the reserve pit can be properly covered over to prevent run-off from carrying waste materials into the watershed. Reserve pits will be lined as needed with either 12 mil bio-degradable plastic liner or a bentonite liner. All earthen pits will be so constructed as to prevent leakage from occurring; no earthen pit will be located on natural drainage. Generation of hazardous waste is not anticipated. Federal regulations will be adhered to regarding handling and disposal of such waste if so generated.
8. Ancillary Facilities - None anticipated.
9. Wellsite Layout - Refer to the location diagram and to the wellsite cut and fill diagram (Figure No. 4). The blow pit will be constructed with a 2'/160' grade to allow positive drainage to the reserve pit and prevent standing liquids in the blow pit.

10. Plans for Restoration of the Surface - After completion of the proposed project, the location will be cleaned and leveled. The location will be left in such a condition that will enable reseeding operations to be carried out. Seed mixture as designated by the responsible government agency will be used. The reseeding operations will be performed during the time period set forth by the responsible government agency. The permanent location facilities will be painted as designated by the responsible government agency.
11. Surface Ownership - Ute Mountain Ute Tribe.
12. Other Information - Environmental stipulations as outlined by the responsible government agency will be adhered to. Refer to the archaeological report for a description of the topography, flora, fauna, soil characteristics, dwellings, historical and cultural sites.
13. Operator's Representative and Certification - Burlington Resources Oil & Gas Company Regional Drilling Manager, Post Office Box 4289, Farmington, NM 87499, telephone (505) 326-9700. I hereby certify that I, or persons under my direct supervision, have inspected the proposed drill site and access route; that I am familiar with the conditions which presently exist; that the statements made in this plan, are to the best of my knowledge, true and correct; and that the work associated with the operations proposed herein will be performed by Burlington Resources Oil and Gas Company and its contractors and subcontractors in conformity with this plan and the terms and conditions under which it is approved.

 6-18-97
Regulatory/Compliance Administrator Date

UTM #44



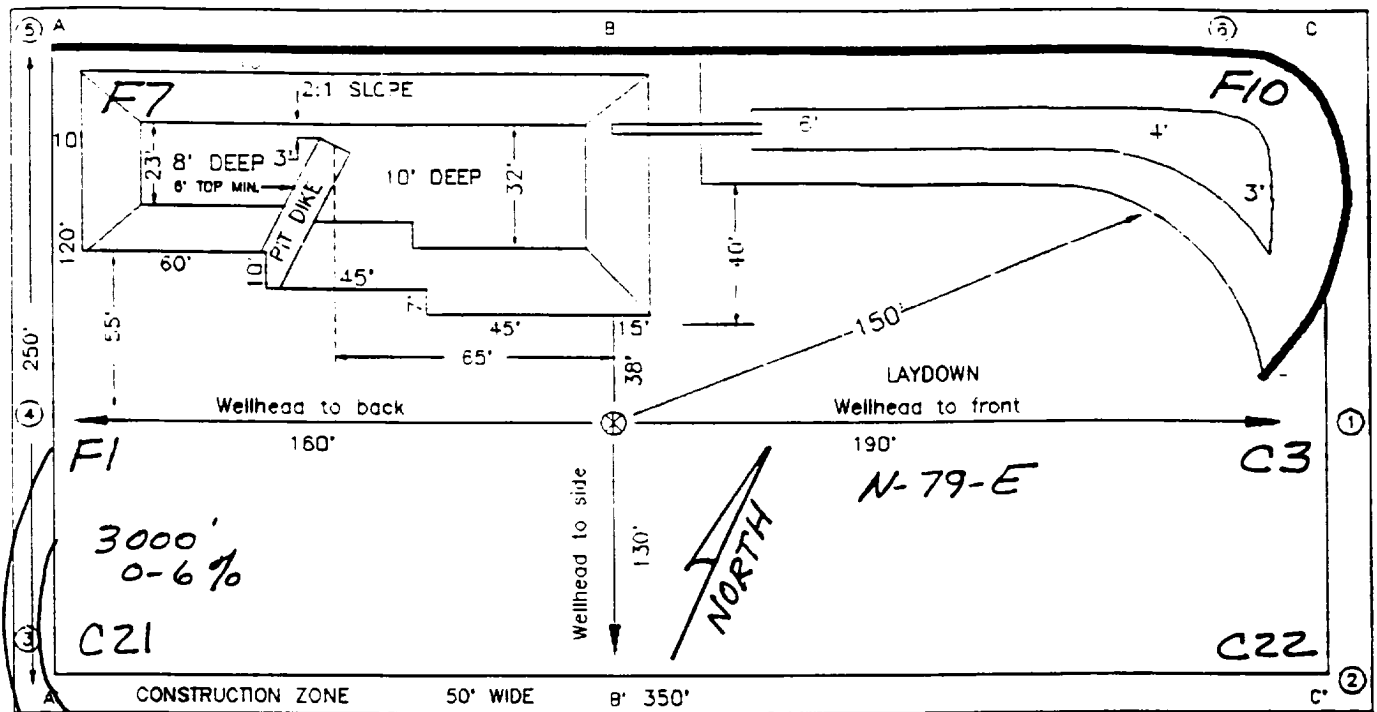
BURLINGTON RESOURCES

PLAT #3

BARKER DOME

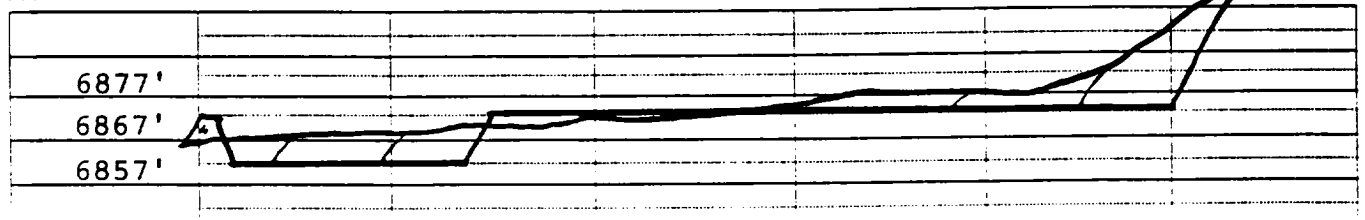
HORIZONTALS

NAME: Ute Mountain Ute #44
 FOOTAGE: 190' FSL, 2355' FWL,
 SEC 9 TWN 32 N.R. 14 W NMPM
 CO: San Juan ST: New Mexico
 ELEVATION: 6867' DATE: 4-16-97



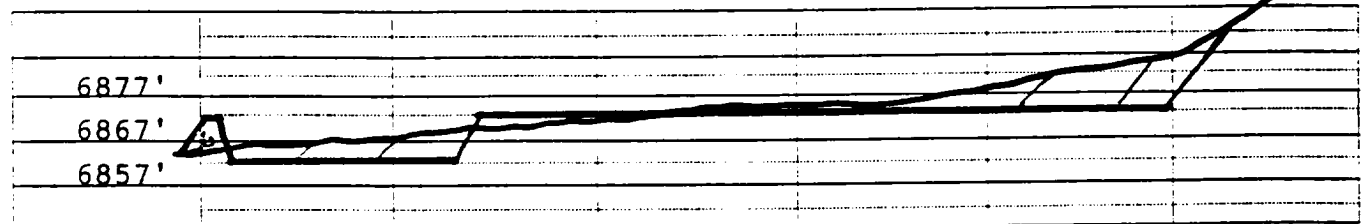
A-A'

C/L



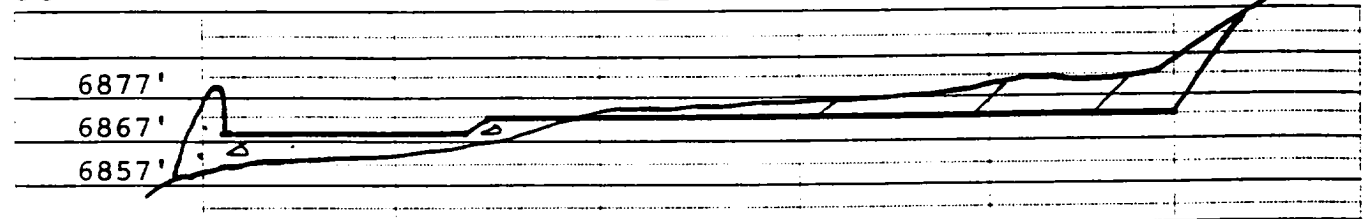
B-B'

C/L



C-C'

C/L

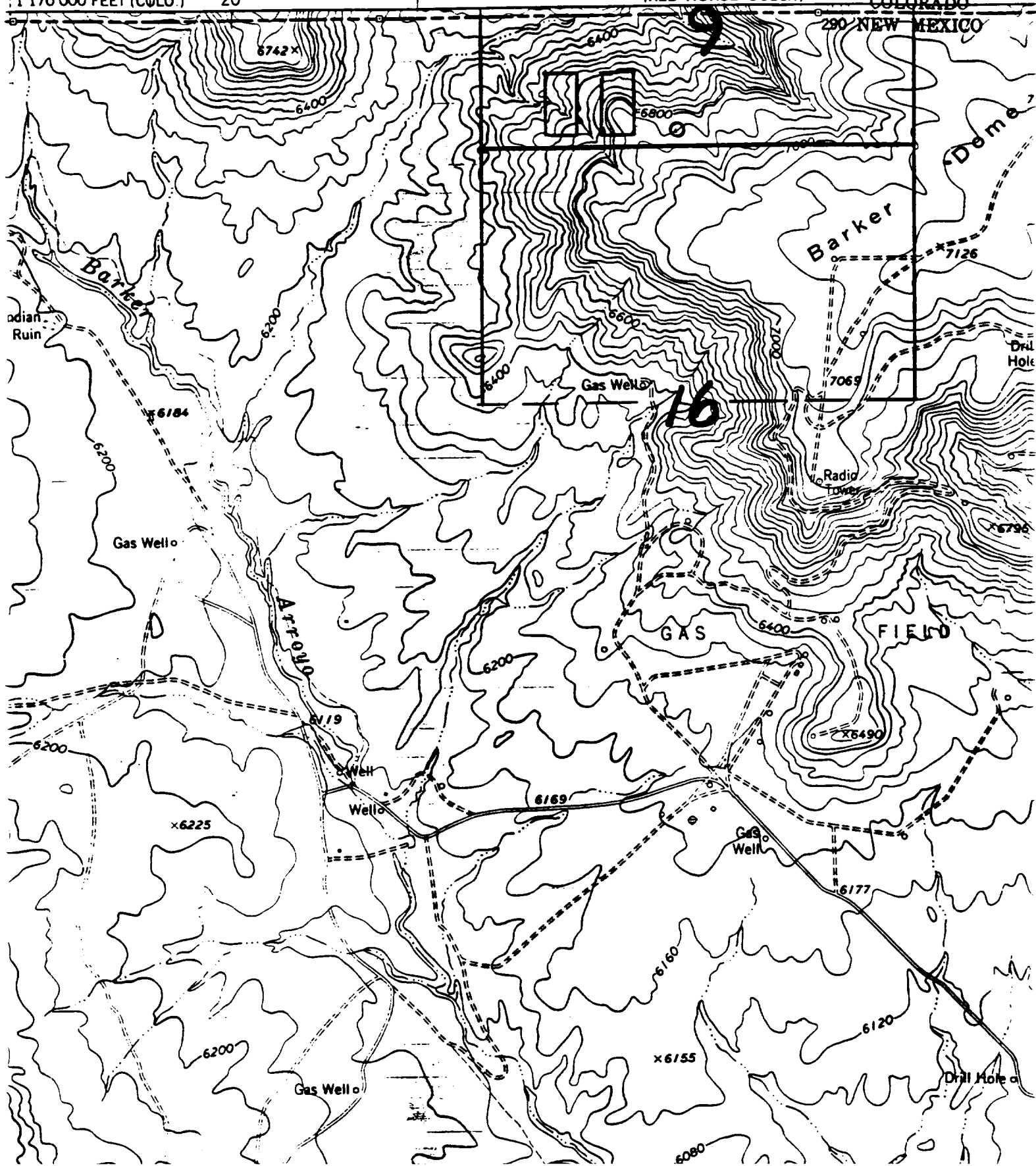


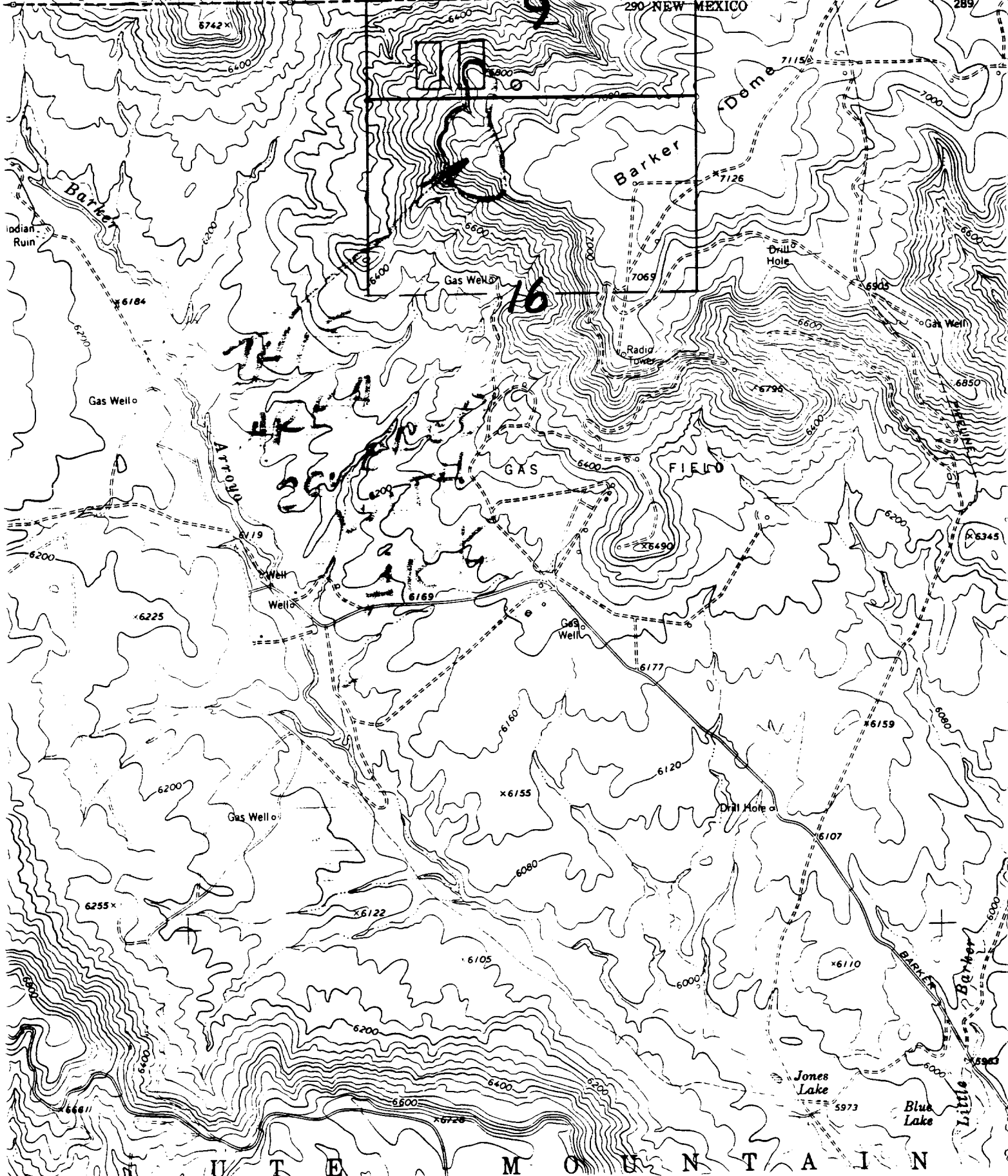
Note: Contractor should call One-Call for location of any marked or unmarked buried pipelines or cables on well pad and/or access road at least 2 working days prior to construction.

1170 000 FEET (COLO.) 20'

4358 M SE
(RED HORSE GULCH)

COLORADO
290 NEW MEXICO





BURLINGTON RESOURCES

SAN JUAN DIVISION

August 26, 1997

Sent Federal Express

Mr. Michael Stogner
New Mexico Oil Conservation Division
2040 South Pacheco
Santa Fe, New Mexico 87505

RECEIVED
R SEP - 2 1997
OIL CON. DIV.
Rm 3

Re: Ute Mountain Ute #44
190'FSL, 2355'FWL, Section 9, T-32-N, R-14-W
API # 30-045 (not yet assigned)

Dear Michael:

This letter is in reference to your request for plats showing the individual dedications for our application for non-standard location of the subject well. We have attached a plat each for the Hermosa, Ismay, Desert Creek, and Akah/Upper Barker Creek.

In the subject well, the Hermosa formation is both non-standard location and proration unit. Please also consider this our application for non-standard proration unit for the Hermosa formation. In the spacing order, 205 acres is dedicated to Section 9. According to the C102, the area in the west half would contain 49.905% of the land within Section 9, thus making our non-standard proration unit contain 102.305 acres.

The C102 for the Ismay covers all of Section 9 at 205 acres. The C102 for the Desert Creek shows all of Section 9 and the north half of Section 16 for a total of 525 acres. The C102 for the Akah/Upper Barker Creek shows all of Section 9 and the north half of Section 16 for a total of 525 acres.

We also have enclosed a C-102 plat for the Ute #12 as you requested. This well is completed in the Lower Barker Creek and is currently producing from that formation. The production unit for wells producing from the Barker Dome Paradox; i.e., the Lower Barker Creek, according to the NMOCD spacing order R-46-B is 845 acres, all of both Sections 9 and 16 in Township 32N, Range 14W.

Please let me know if you need any further information. Thanks for your prompt attention to this application.

Sincerely,



Peggy Bradfield
Regulatory/Compliance Administrator

xc: NMOCD - Aztec District Office

District I
PO Box 1960, Hobbs, NM 88241-1960
District II
PO Drawer OD, Artesa, NM 88211-0719
District III
1000 N. Main Rd., Aztec, NM 87410
District IV
PO Box 2088, Santa Fe, NM 87504-2088

State of New Mexico
Energy, Minerals & Natural Resources Department

OIL CONSERVATION DIVISION
PO Box 2088
Santa Fe, NM 87504-2088

Form 1
Revised February 21,
Instructions on
Submit to Appropriate District
State Lease - 4 C
Fee Lease - 3 C

☐ AMENDED RE:

WELL LOCATION AND ACREAGE DEDICATION PLAT

API Number 30-045-	Well Code	Well Name Wildcat Hermosa
Property Code 18725	Property Name Ute Mountain Ute	Well Number 44
OGRID No. 14538	Operator Name BURLINGTON RESOURCES OIL & GAS COMPANY	Elevation 6867'

10 Surface Location

UL or lot no.	Section	Township	Range	Lot Idn	Feet from the	North/South line	Feet from the	East/West line	County
N	9	32-N	14-W		190	South	2355	West	S.J.

11 Bottom Hole Location if Different From Surface

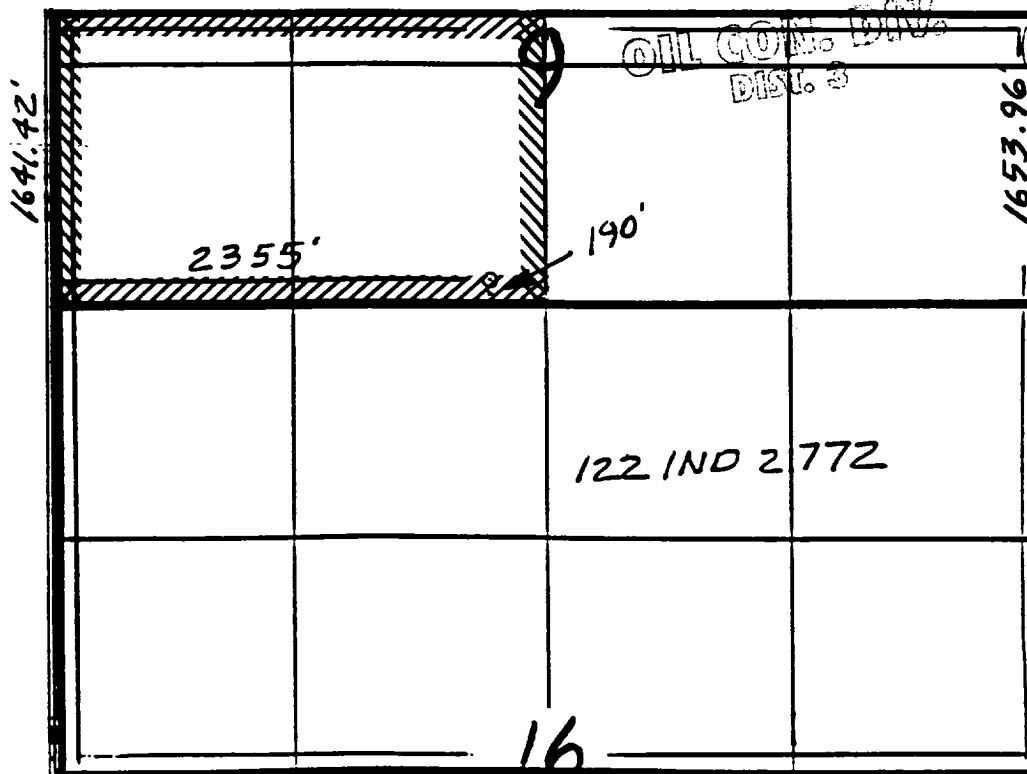
UL or lot no.	Section	Township	Range	Lot Idn	Feet from the	North/South line	Feet from the	East/West line	County

12 Dedication Acres 102.305	13 Joint or Infill	14 Commencement Code	15 Order No.
--------------------------------	--------------------	----------------------	--------------

NO ALLOWABLE WILL BE ASSIGNED TO THIS COMPLETION UNTIL ALL INTERESTS HAVE BEEN CONSOLIDATED
OR A NON-STANDARD UNIT HAS BEEN APPROVED BY THE DIVISION

RECEIVED
SEP - 2 1997

OIL CON. DIV.
DIST. 3



17 OPERATOR CERTIFICATE

I hereby certify that the information contained here is true and complete to the best of my knowledge and

Peggy Bradfield
Signature
Peggy Bradfield
Printed Name
Regulatory Administra
Title
Date

18 SURVEYOR CERTIFICATE

I hereby certify that the well location shown on this was plotted from field notes of actual surveys made or under my supervision, and that the same is true correct to the best of my belief.

4/16/97

Date of Survey
Signature and Seal of Professional Surveyor
NEALE C. EDWARD
NEW MEXICO
6857
6857
Certification Number

District I
PO Box 1988, Hobbs, NM 88241-1988
District II
PO Drawer DD, Aztec, NM 88211-0719
District III
1000 Rio Brann Rd., Aztec, NM 87410
District IV
PO Box 2088, Santa Fe, NM 87504-2088

State of New Mexico
Energy, Minerals & Natural Resources Department

OIL CONSERVATION DIVISION
PO Box 2088
Santa Fe, NM 87504-2088

Form 1
Revised February 21,
Instructions on
Submit to Appropriate District
State Lease - 4 C
Fee Lease - 3 C

☐ AMENDED RE

WELL LOCATION AND ACREAGE DEDICATION PLAT

API Number 30-045-	Well Code 96354	Well Name Barker Dome Ismay
Property Code 18725	Property Name Ute Mountain Ute	Well Number 44
OGRID No. 14538	Operator Name BURLINGTON RESOURCES OIL & GAS COMPANY	Elevation 6867'

10 Surface Location

UL or lot no.	Section	Township	Range	Lot Idn	Feet from the	North/South line	Feet from the	East/West line	County
N	9	32-N	14-W		190	South	2355	West	S.J.

11 Bottom Hole Location If Different From Surface

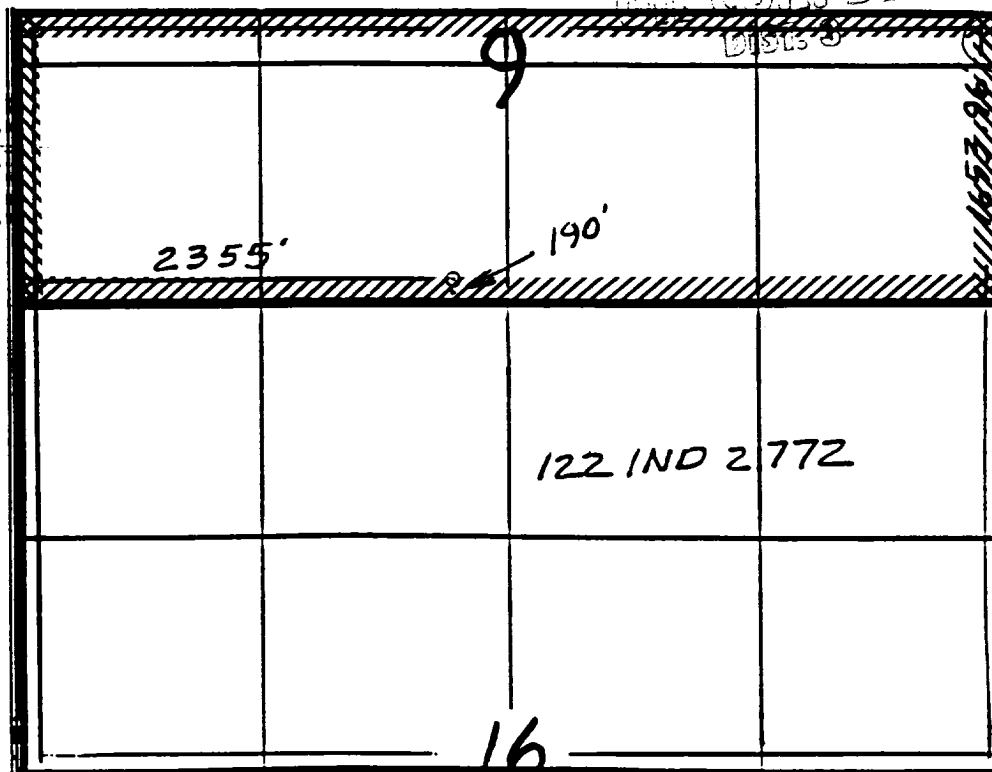
UL or lot no.	Section	Township	Range	Lot Idn	Feet from the	North/South line	Feet from the	East/West line	County

12 Dedication Acres 205	13 Joint or Infill	14 Consolidation Code	15 Order No.
----------------------------	--------------------	-----------------------	--------------

NO ALLOWABLE WILL BE ASSIGNED TO THIS COMPLETION UNTIL ALL INTERESTS HAVE BEEN CONSOLIDATED
OR A NON-STANDARD UNIT HAS BEEN APPROVED BY THE DIVISION

RECEIVED
SEP - 2 1997

OIL CON. DIV.
DIST. 3



17 OPERATOR CERTIFICATE

I hereby certify that the information contained here
is true and complete to the best of my knowledge and

Peggy Bradfield
Signature
Peggy Bradfield
Printed Name
Regulatory Administra
Title
Date

18 SURVEYOR CERTIFICATE

I hereby certify that the well location shown on the
was plotted from field notes of actual surveys made
or under my supervision, and that the same is true
correct to the best of my belief.

4/16/97

Date of Survey
Signature and Seal of Professional Surveyor
6857
Certificate Number
NEALE C. EDWARD
NEW MEXICO
1987
REGISTERED PROFESSIONAL SURVEYOR

District I
PO Box 1988, Hobbs, NM 88241-1988
District II
PO Drawer 00, Artesia, NM 88211-0719
District III
1088 Rio Bravo Rd., Aztec, NM 87410
District IV
PO Box 2088, Santa Fe, NM 87504-2088

State of New Mexico
Energy, Minerals & Natural Resources Department

OIL CONSERVATION DIVISION
PO Box 2088
Santa Fe, NM 87504-2088

Form
Revised February 21,
Instructions on
Submit to Appropriate District
State Lease - 4 ()
Fee Lease - 3 ()

☐ AMENDED RE

WELL LOCATION AND ACREAGE DEDICATION PLAT

API Number 30-045-	Pool Code 06353	Pool Name Barker Dome Desert Creek
Property Code 18725	Property Name Ute Mountain Ute	Well Number 44
OGRID No. 14538	Operator Name BURLINGTON RESOURCES OIL & GAS COMPANY	Elevation 6867'

10 Surface Location

UL or lot no. N	Section 9	Township 32-N	Range 14-W	Lot Ida	Feet from the 190	North/South line South	Feet from the 2355	East/West line West	County S.J.
--------------------	--------------	------------------	---------------	---------	----------------------	---------------------------	-----------------------	------------------------	----------------

11 Bottom Hole Location If Different From Surface

UL or lot no.	Section	Township	Range	Lot Ida	Feet from the	North/South line	Feet from the	East/West line	County
---------------	---------	----------	-------	---------	---------------	------------------	---------------	----------------	--------

12 Dedicated Acres 13 Joint or Infill 14 Constitution Code 15 Order No.

525

NO ALLOWABLE WILL BE ASSIGNED TO THIS COMPLETION UNTIL ALL INTERESTS HAVE BEEN CONSOLIDATED
OR A NON-STANDARD UNIT HAS BEEN APPROVED BY THE DIVISION

RECEIVED
SEP - 2 1987

OIL CON. DIV.

17 OPERATOR CERTIFICATE

I hereby certify that the information contained herein is true and complete to the best of my knowledge and belief.

Peggy Bradfield
Signature
Peggy Bradfield
Printed Name
Regulatory Administrator
Title

Date

18 SURVEYOR CERTIFICATE

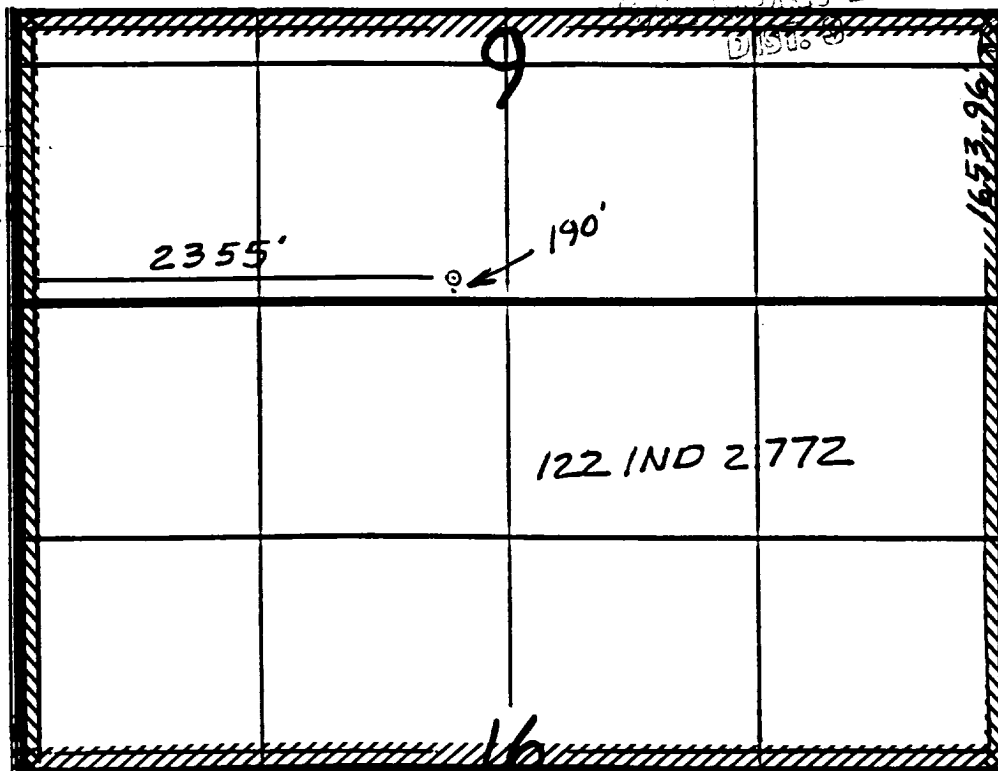
I hereby certify that the well location shown on this plat was plotted from field notes of actual surveys made or under my supervision, and that the same is true and correct to the best of my belief.

4/16/97

Date of Survey

Signature and Seal of Professional Surveyor

NEAL C. EDWARDS
NEW MEXICO
6867
6857
Professional Surveyor



District I
PO Box 1988, Hobbs, NM 88241-1988
District II
PO Drawer DD, Artesa, NM 88211-0719
District III
1000 Rio Bravo Rd., Aztec, NM 87410
District IV
PO Box 2088, Santa Fe, NM 87504-2088

State of New Mexico
Energy, Minerals & Natural Resources Department

OIL CONSERVATION DIVISION
PO Box 2088
Santa Fe, NM 87504-2088

Form C-
Revised February 21, 1991
Instructions on b
Submit to Appropriate District Of
State Lease - 4 Co
Fee Lease - 3 Co

☐ AMENDED REPORT

WELL LOCATION AND ACREAGE DEDICATION PLAT

API Number 30-045-		Well Code 96352	Well Name Barker Dome-Akah/Upper Barker Creek
Property Code 18725	Property Name Ute Mountain Ute		Well Number 44
OGRID No. 14538	Operator Name BURLINGTON RESOURCES OIL & GAS COMPANY		Elevation 6867'

10 Surface Location

UL or lot no.	Section	Township	Range	Lot Ids	Feet from the	North/South line	Feet from the	East/West line	County
N	9	32-N	14-W		190	South	2355	West	S.J.

11 Bottom Hole Location If Different From Surface

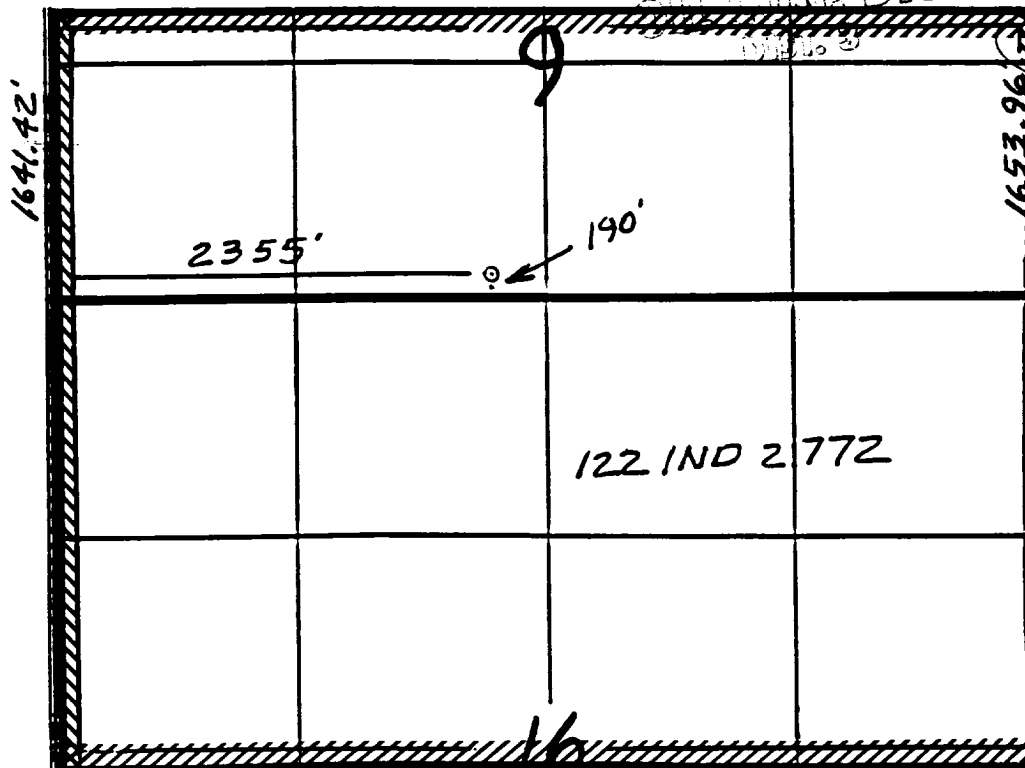
UL or lot no.	Section	Township	Range	Lot Ids	Feet from the	North/South line	Feet from the	East/West line	County

12 Dedication Acres 5.25	13 Joint or Infill	14 Consolidation Code	15 Order No.
-----------------------------	--------------------	-----------------------	--------------

NO ALLOWABLE WILL BE ASSIGNED TO THIS COMPLETION UNTIL ALL INTERESTS HAVE BEEN CONSOLIDATED
OR A NON-STANDARD UNIT HAS BEEN APPROVED BY THE DIVISION

RECEIVED
SEP - 2 1997

OIL CON. DIV.
FILE # 3



17 OPERATOR CERTIFICATION

I hereby certify that the information contained herein
is true and complete to the best of my knowledge and belief.

Peggy Bradfield
Signature
Peggy Bradfield
Printed Name
Regulatory Administrator
Title
Date

18 SURVEYOR CERTIFICATION

I hereby certify that the well location shown on this plat
was plotted from field notes of actual surveys made by
me or under my supervision, and that the same is true and
correct to the best of my belief.

4/16/97

Date of Survey
Signature and Seal of Professional Surveyor

6857
Professional Surveyor
NEALE C. EDWARDS
NEW MEXICO
1987

District I
PO Box 1980, Hobbs, NM 88241-1980

District II
PO Drawer DD, Artesia, NM 88211-0719

District III
1000 Rio Brazos Rd., Aztec, NM 87410

District IV
PO Box 2088, Santa Fe, NM 87504-2088

State of New Mexico
Energy, Minerals & Natural Resources Department

OIL CONSERVATION DIVISION
PO Box 2088
Santa Fe, NM 87504-2088

Form C-102
Revised February 21, 1994
Instructions on back
Submit to Appropriate District Office
State Lease - 4 Copies
Fee Lease - 3 Copies

☐ AMENDED REPORT

WELL LOCATION AND ACREAGE DEDICATION PLAT

*API Number 30-045-11426		*Pool Code 71560	*Pool Name Barker Dome Paradox
*Property Code 7618	*Property Name UTE		*Well Number 12
*OGRID No. 14538	*Operator Name BURLINGTON RESOURCES OIL & GAS COMPANY		*Elevation 6415'

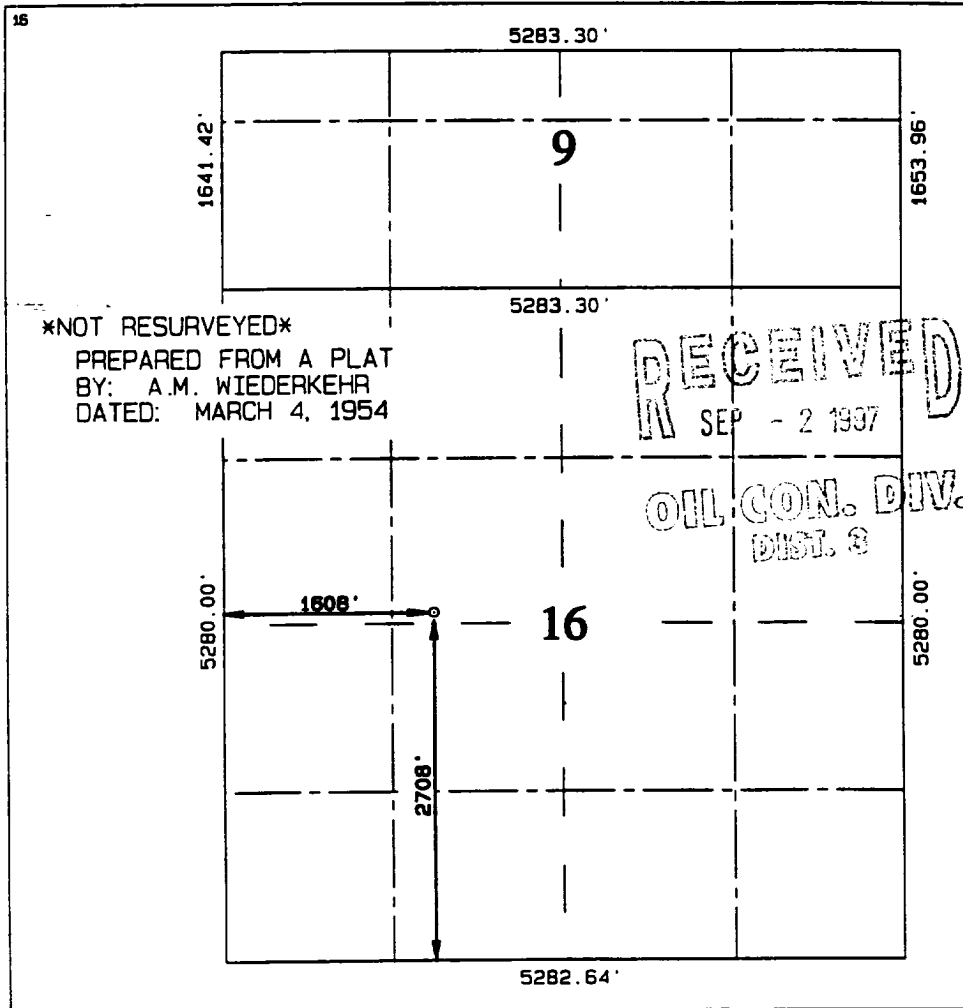
¹⁰ Surface Location

UL or lot no.	Section	Township	Range	Lot Idn	Feet from the	North/South line	Feet from the	East/West line	County
F	16	32N	14W		2708	South	1608	West	SAN JUAN

¹¹ Bottom Hole Location If Different From Surface

UL or lot no.	Section	Township	Range	Lot Idn	Feet from the	North/South line	Feet from the	East/West line	County
¹² Dedicated Acres 8.45		¹³ Joint or Infill		¹⁴ Consolidation Code		¹⁵ Order No. R-4G-B			

NO ALLOWABLE WILL BE ASSIGNED TO THIS COMPLETION UNTIL ALL INTERESTS HAVE BEEN CONSOLIDATED OR A NON-STANDARD UNIT HAS BEEN APPROVED BY THE DIVISION



¹⁷ OPERATOR CERTIFICATION

I hereby certify that the information contained herein is true and complete to the best of my knowledge and belief

Signature

Peggy Bradfield
Printed Name

Regulatory Administrator
Title

Date

¹⁸ SURVEYOR CERTIFICATION

I hereby certify that the well location shown on this plat was plotted from field notes of actual surveys made by me or under my supervision, and that the same is true and correct to the best of my belief.

AUGUST 21, 1997

Date of Survey

Signature and Seal of Surveyor

NEALE C. EDWARDS
NEW MEXICO
6857
Certificate