

UNITED STATES  
DEPARTMENT OF THE INTERIOR  
BUREAU OF LAND MANAGEMENTSubmit 8 FOR Tribal  
Interest, 7 for BLM\*  
(Other Instructions on  
reverse side)FORM APPROVED  
Budget Bureau No. 100-238  
Expires: February 28, 1993

APD/HOW

## APPLICATION FOR PERMIT TO DRILL OR DEEPEN

1a. Type of Work

DRILL ☒DEEPEN ☐

1b. TYPE OF WELL

OIL WELL ☐GAS WELL ☒OTHER ☐Single ☒Multiple ☐

Zone

Zone

2. NAME OF OPERATOR

Cross Timbers Operating Company

3. ADDRESS AND TELEPHONE NO.

6001 Highway 64, Farmington, NM 87401 915/682-8873 Mark Gosch

4. LOCATION OF WELL (Report location clearly and in accordance with any State requirements.)

At Surface:

1000' FNL - 2320' FEL

At proposed prod. zone&gt;

14. DISTANCE IN MILES AND DIRECTIONS FROM NEAREST TOWN OR POST OFFICE

See attached Surface Use Program.

15. DISTANCE FROM PROPOSED\* LOCATION TO  
NEAREST PROPERTY OR LEASE LINE, FT. (Also  
to nearest drlg. Unit line, if any.)

1000'

16. NO. OF ACRES IN LEASE

18. DISTANCE FROM PROPOSED\* LOCATION TO  
NEAREST WELL, DRILLING, COMPLETED OR APPLIED  
FOR, ON THIS LEASE, FT.

2640'

19. PROPOSED DEPTH

2,250'

21. ELEVATIONS (Show whether DF, RT, GR, etc.)

5928' G.L.

17. NO. OF ACRES ASSIGNED TO THIS WELL

320

20. ROTARY OR CABLE TOOLS

Rotary

22. APPROX. DATE WORK WILL START\*

2<sup>nd</sup> Quarter 1999

## 23. PROPOSED CASING AND CEMENTING PROGRAM

SIZE OF HOLE	GRADE, SIZE OF CASING	WEIGHT PER FOOT	SETTING DEPTH	QUANTITY OF CEMENT
8-3/4"	J-55, 7"	23#	+/- 125'	100 sx
6-1/4"	J-55, 4-1/2"	10.5#	+/- 2,250'	200 sx

Surface

7", 23#, J-55, STC casing at 125'

100 sx of Class "B" cement w/ 2% CaCl<sub>2</sub> & 1/4 pps Flocele (14.8 ppg, 1.34 cu.ft./sx)

Production

4-1/2", 10.5#, J-55, STC casing at 2,250'

Lead - 100 sx of 35:65 Poz "B" cement w/ 6% Gel, 5 pps Gilsonite, &  
cu.ft./sx)

Tail - 100 sx of Class "B" cement w/ 5 pps Gilsonite, &amp; 1/4 pps Celloflake (14.8 ppg, 1.33 cu.ft./sx)

Remarks: Use 25% excess over volume calculated from open hole logs to bring TOC up to surface.

IN ABOVE SPACE DESCRIBE PROPOSED PROGRAM: If proposal is to deepen, give data on present productive zone and proposed new productive zone. If proposal is to drill or  
deepen directionally, give pertinent data on subsurface locations and measured and true and vertical depths. Give blowout preventer program, if any.

24.

SIGNED:

Gary L. Markestad, P.E. VP Production

DATE: 1/27/99

(This space for Federal or State office use)

Permit Number:

Approval Date:

FEB 22 1999

Application approval does not warrant or certify that the applicant holds legal or equitable to those rights in the subject lease which would entitle the applicant to conduct  
operations thereon.

CONDITIONS OF APPROVAL, IF ANY

APPROVED BY

/s/ Duane W. Spencer

TITLE

Team Lead, Petroleum Management

DATE

FEB 22 1999

Title 18 U.S.C. Section 1001, makes it a crime for any person knowingly and willfully to make to any department or agency of the United States any false, fictitious or fraudulent statements or representations as  
to any matter within its jurisdiction.

\* See Instruction on Reverse Side

District I  
PO Box 1980, Hobbs, NM 88241-1980

District II  
PO Drawer DD, Artesia, NM 88211-0719

District III  
1000 Rio Brazos Rd., Aztec, NM 87410

District IV  
PO Box 2088, Santa Fe, NM 87504-2088

State of New Mexico  
Energy, Minerals & Natural Resources Department

OIL CONSERVATION DIVISION  
PO Box 2088  
Santa Fe, NM 87504-2088

Form C-102  
Revised February 21, 1994  
Instructions on back  
Submit to Appropriate District Office  
State Lease - 4 Copies  
Fee Lease - 3 Copies

☐ AMENDED REPORT

WELL LOCATION AND ACREAGE DEDICATION PLAT

<sup>1</sup> API Number 30-045-29816	<sup>2</sup> Pool Code 71629	<sup>3</sup> Pool Name BASIN FRUITLAND COAL
<sup>4</sup> Property Code 22855	<sup>5</sup> Property Name FEDERAL GAS COM 1	<sup>6</sup> Well Number 2
<sup>7</sup> OGRID No. 167067	<sup>8</sup> Operator Name CROSS TIMBERS OPERATING COMPANY	<sup>9</sup> Elevation 5928'

<sup>10</sup> Surface Location

UL or lot no.	Section	Township	Range	Lot Idn	Feet from the	North/South line	Feet from the	East/West line	County
B	20	32N	12W		1000	NORTH	2320	EAST	SAN JUAN

<sup>11</sup> Bottom Hole Location If Different From Surface

UL or lot no.	Section	Township	Range	Lot Idn	Feet from the	North/South line	Feet from the	East/West line	County

<sup>12</sup> Dedicated Acres 320 - N/2	<sup>13</sup> Joint or Infill	<sup>14</sup> Consolidation Code	<sup>15</sup> Order No.
--	-------------------------------	----------------------------------	-------------------------

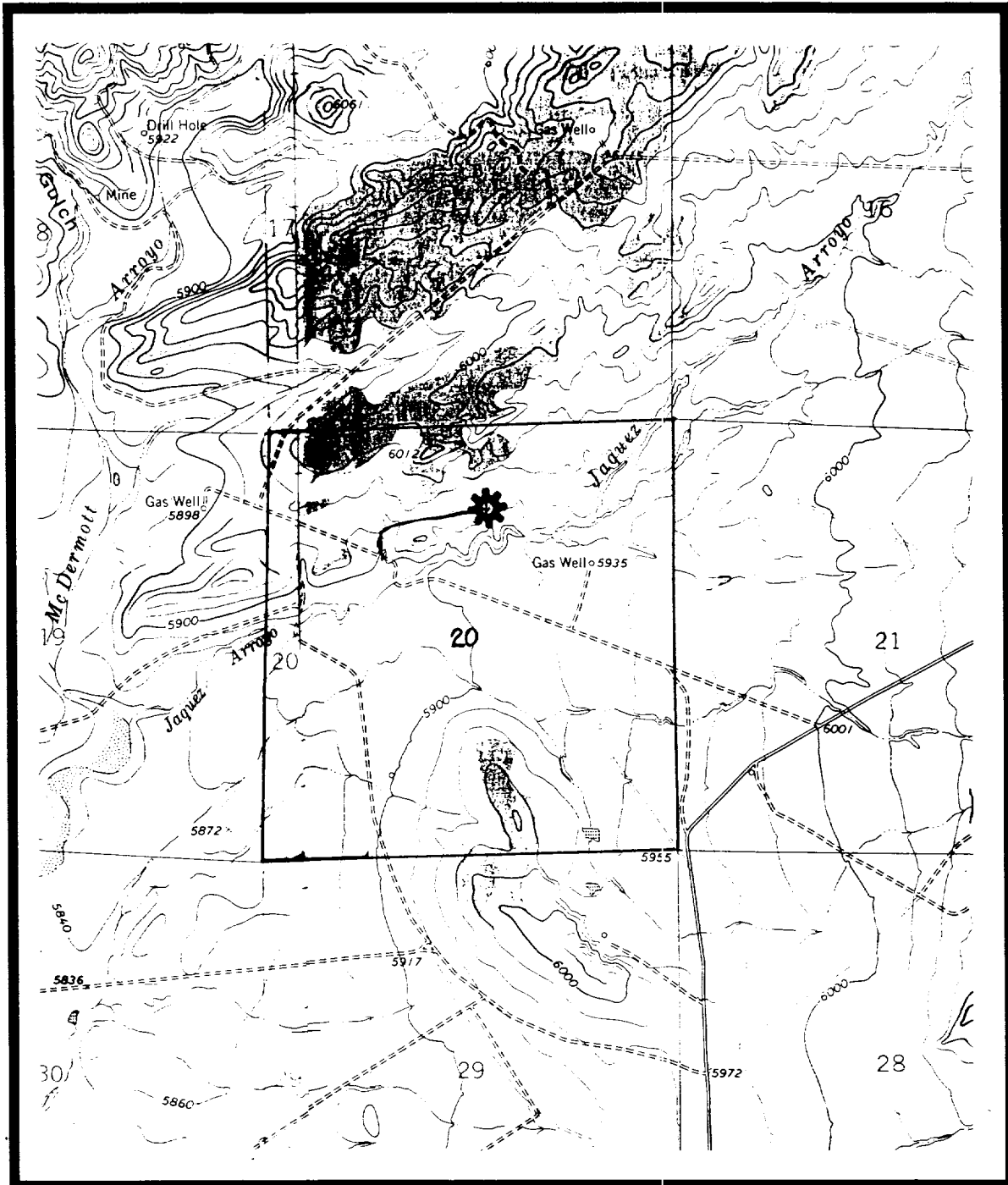
NO ALLOWABLE WILL BE ASSIGNED TO THIS COMPLETION UNTIL ALL INTERESTS HAVE BEEN CONSOLIDATED  
OR A NON-STANDARD UNIT HAS BEEN APPROVED BY THE DIVISION

<div><p><sup>16</sup></p><p><sup>15</sup></p></div>	<div><p><sup>17</sup> OPERATOR CERTIFICATION</p><p>I hereby certify that the information contained herein is true and complete to the best of my knowledge and belief.</p><p><i>Gary L. Markestad</i> Signature Gary L. Markestad Printed Name Vice-President / Production Title 2/1/99 Date</p><p><sup>18</sup> SURVEYOR CERTIFICATION</p><p>I hereby certify that the well location shown on this plat was plotted from field notes of actual surveys made by me or under my supervision, and that the same is true and correct to the best of my belief.</p><p>OCTOBER 22, 1998 Date of Survey Signature and Seal of <i>Neale G. Edwards</i> NEALE G. EDWARDS NEW MEXICO 6857 REGISTERED PROFESSIONAL SURVEYOR 5827 Certificate Number</p></div>
---	---

# CROSS TIMBERS OPERATING COMPANY

## FEDERAL GAS COM 1 #2

1000' FNL - 2320' FEL Unit B; Section 20, Township 32 North, Range 12 West



San Juan County, New Mexico  
La Plata, NM and Adobe Downs Ranch, NM 7.5' Topos