

UNITED STATES
DEPARTMENT OF THE INTERIOR
BUREAU OF LAND MANAGEMENTSubmit 8 FQR Tribal
Interest, 7 for BLM.
(Other Instructions on
reverse side)FORM APPROVED
Budget Bureau No. 1004-0136
Expires: February 28, 1995

APPLICATION FOR PERMIT TO DRILL OR DEEPEN

1a. Type of Work

DRILL ☒DEEPEN ☐

1b. TYPE OF WELL

OIL WELL ☐GAS WELL ☒OTHER ☐Single ☒Multiple ☐

Zone

Zone

2. NAME OF OPERATOR

Cross Timbers Operating Company c/o Loren W. Fothergill

3. ADDRESS AND TELEPHONE NO.

2700 Farmington Ave, Bldg. K, Ste. 1, Farmington, NM 87401 505-324-1090

4. LOCATION OF WELL (Report location clearly and in accordance with any State requirements.)

At Surface: 1510FSL - 2100FWL

At proposed prod. zone>

14. DISTANCE IN MILES AND DIRECTIONS FROM NEAREST TOWN OR POST OFFICE*

Approximately seven miles from La Plata, New Mexico. Please refer to Surface Use Program for details.

15. DISTANCE FROM PROPOSED* LOCATION TO
NEAREST PROPERTY OR LEASE LINE, FT. (Also
to nearest drlg. Unit line, if any.)

1510'

16. NO. OF ACRES IN LEASE

JUN 18 1999

17. NO. OF ACRES ASSIGNED TO THIS WELL

SW/4 160

18. DISTANCE FROM PROPOSED* LOCATION TO
NEAREST WELL, DRILLING, COMPLETED OR APPLIED
FOR, ON THIS LEASE, FT.

1280'

19. PROPOSED DEPTH
Bureau of Land Management
Durango Colorado

2700'

20. ROTARY OR CABLE TOOLS

Rotary

21. ELEVATIONS (Show whether DF, RT, GR, etc.)

Approval of this agreement does not
warrant or certify that the operator
thereof and other holders of operating
rights hold legal or equitable title

6165'

22. APPROX. DATE WORK WILL START*

A.S.A.P.

23. PROPOSED CEMENTING AND CEMENT LOSS

SIZE OF HOLE	GRADE, SIZE OF CASING	SETTING DEPTH	QUANTITY OF CEMENT
12 1/2"	8 5/8" J-55	300'	200 sx
7 7/8"	4-1/2" J-55	2700'	385 sx

Vesting / Flaring approved for 80 days
per MTL-4ASurface 8 5/8", 24#, J-55, STC casing at 300'; 200 sx Class "B" cement w/2% CaCl₂ & 1/4 pps Celloflake (15.6 ppg, 1.19 cu. ft./sx, & 5.19 gal/sx wtr.)Production 4-1/2", 10.5#, J-55, STC casing at 2,700' Lead: 235 sx of Class "B" cement w/2% D79 and 1/4 pps Celloflake (11.4 ppg, 2.87 cu ft./sx), Tail: 150 sx of Class "B" cement w/2% D-79, 2% CaCl₂ & 1/4 pps Celloflake (13.5 ppg, 1.71 cu.ft./sx)

Remarks: Use 20% excess over volume calculated from open hole logs to bring cement to the surface.

SEE ATTACHED

CONDITIONS OF APPROVAL

IN ABOVE SPACE DESCRIBE PROPOSED PERMIT. If proposal is to deepen, give data on present productive zone and proposed new productive zone. If proposal is to drill or deepen directionally, give pertinent data on subsurface locations and measured and true and vertical depths. Give blowout preventer program, if any.

24.

SIGNED: Loren W. Fothergill

TITLE

Loren W. Fothergill, Senior Production Engineer

DATE: 6/17/99

(This space for Federal or State office use)

Permit Number:

Approval Date:

Application approval does not warrant or certify that the applicant holds legal or equitable to those rights in the subject lease which would entitle the applicant to conduct operations thereon.

CONDITIONS OF APPROVAL, IF ANY

Illyse K. Auringer

MINERALS STAFF CHIEF

APPROVED BY

TITLE

APPROVED FOR A PERIOD
NOT TO EXCEED 1 YEAR.

OCT 26 1999

DATE

Title 18 U.S.C. Section 1001, makes it a crime for any person knowingly and willfully to make to any department or agency of the United States any false, fictitious or fraudulent statements or representations as to any matter within its jurisdiction.

* See Instruction on Reverse Side

HOLD C104 FOR NSL (F)

NMCCD

District I
PO Box 1980, Hobbs, NM 88241-1980

District II
PO Drawer DD, Artesia, NM 88211-0719

District III
1000 Rio Brazos Rd., Aztec, NM 87410

District IV
PO Box 2088, Santa Fe, NM 87504-2088

State of New Mexico
Energy, Minerals & Natural Resources Department

OIL CONSERVATION DIVISION
PO Box 2088
Santa Fe, NM 87504-2088

Form C-102
Revised February 21, 1994

Instructions on back
Submit to Appropriate District Office
State Lease - 4 Copies
Fee Lease - 3 Copies

☐ AMENDED REPORT

WELL LOCATION AND ACREAGE DEDICATION PLAT

¹ API Number 30-045-30030	² Pool Code 86720	³ Pool Name UTE DOME DAKOTA
⁴ Property Code 22645	⁵ Property Name UTE INDIANS A	⁶ Well Number 29
⁷ GRID No. 167067	⁸ Operator Name CROSS TIMBERS OPERATING COMPANY	⁹ Elevation 6165'

¹⁰ Surface Location

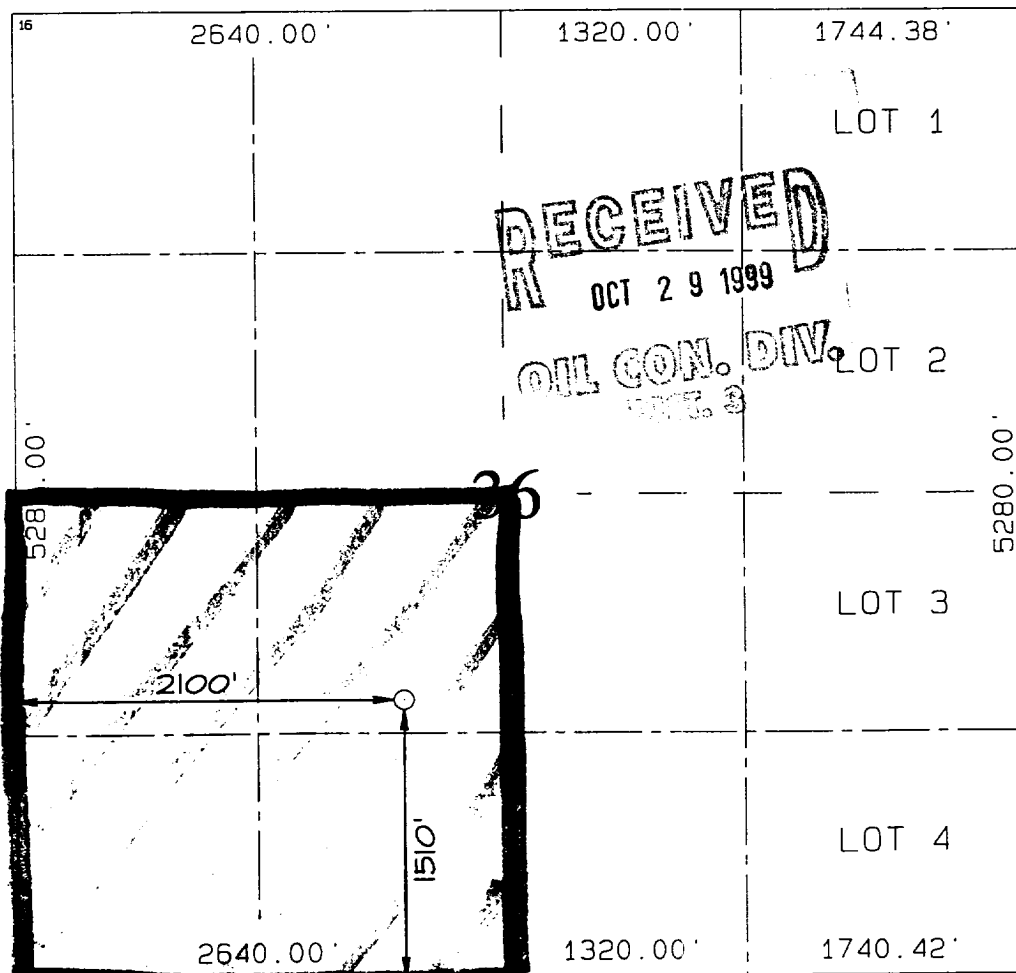
UL or lot no.	Section	Township	Range	Lot Idn	Feet from the	North/South line	Feet from the	East/West line	County
K	36	32N	14W		1510	SOUTH	2100	WEST	SAN JUAN

¹¹ Bottom Hole Location If Different From Surface

UL or lot no.	Section	Township	Range	Lot Idn	Feet from the	North/South line	Feet from the	East/West line	County

¹² Dedicated Acres	¹³ Joint or Infill	¹⁴ Consolidation Code	¹⁵ Order No.

NO ALLOWABLE WILL BE ASSIGNED TO THIS COMPLETION UNTIL ALL INTERESTS HAVE BEEN CONSOLIDATED
OR A NON-STANDARD UNIT HAS BEEN APPROVED BY THE DIVISION



¹⁷ OPERATOR CERTIFICATION

I hereby certify that the information contained herein is true and complete to the best of my knowledge and belief

Loren W Fothergill
Signature
Loren W. Fothergill
Printed Name
Production Engineer
Title
Date

¹⁸ SURVEYOR CERTIFICATION

I hereby certify that the well location shown on this plat was plotted from field notes of actual surveys made by me or under my supervision, and that the same is true and correct to the best of my belief.

MARCH 29, 1999
Date of Survey
Signature and Seal of Professional Surveyor

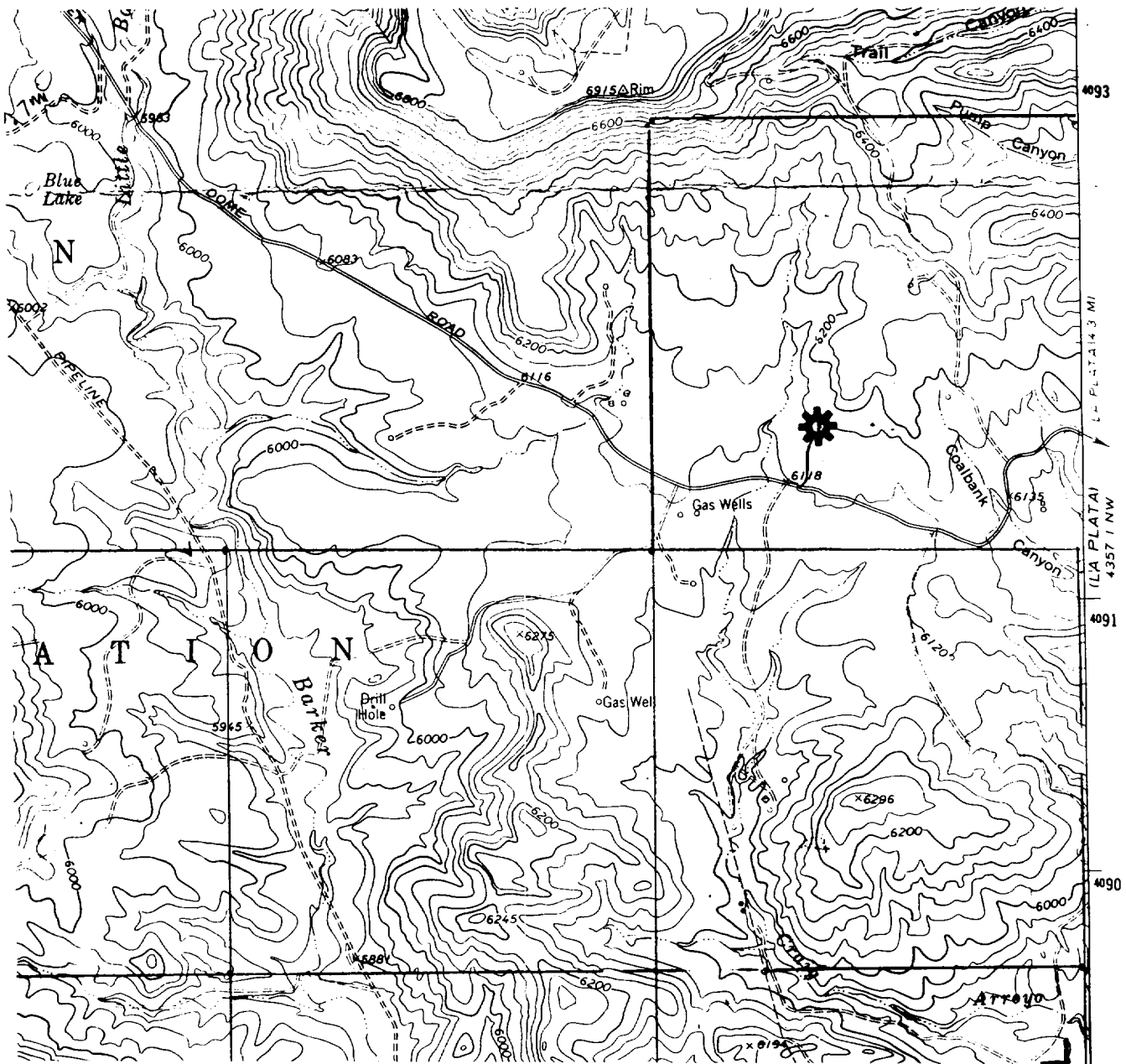
Certificate Number 6857

CROSS TIMBERS OPERATING COMPANY

UTE MOUNTAIN TRIBE #A29

1510' FSL- 2100' FWL, Sec. 36, T32N-R14W

Proposed Ute Dome Dakota



USGS Farmington South, New Mexico // 7.5' Series // Scale 1:24000