

District I
PO Box 1980, Hobbs, NM 88241-1980
District II
811 S. 1st Street, Artesia, NM 88210-2834
District III
1000 Rio Brazos Rd., Aztec, NM 87410
District IV
2040 South Pacheco, Santa Fe, NM 87505

State of New Mexico
Energy, Mines & Natural Resources Department

OIL CONSERVATION DIVISION
2040 South Pacheco
Santa Fe, NM 87505

Form C-101
Revised October 18, 1999
Instructions on back
Submit to Appropriate District Office
State Lease - 6 Copies
Fee Lease - 5 Copies

☐ AMENDED REPORT

APPLICATION FOR PERMIT TO DRILL, RE-ENTER, DEEPEN, PLUGBACK, OR ADD A ZONE

¹ Operator name and Address Cross Timbers Operating Company 2700 Farmington Ave., Bldg. K. Ste 1 Farmington, NM 87401		² OGRID Number 167067
⁴ Property Code 22856	⁵ Property Name Montoya Com	³ API Number 30-0 45 30314
		⁶ Well No. #1C

⁷ Surface Location									
UL or lot no.	Section	Township	Range	Lot. Idn	Feet from the	North/South Line	Feet from the	East/West line	County
J	25	32N	13W		1,805	South	21110950	East	San Juan

⁸ Proposed Bottom Hole Location If Different From Surface									
UL or lot no.	Section	Township	Range	Lot. Idn	Feet from the	North/South Line	Feet from the	East/West line	County
⁹ Proposed Pool 1 Blanco Mesaverde					¹⁰ Proposed Pool 2				

¹¹ Work Type Code N	¹² Well Type Code G	¹³ Cable/Rotary R	¹⁴ Lease Type Code P	¹⁵ Ground Level Elevation 5,871' Ground Level
¹⁶ Multiple No	¹⁷ Proposed Depth 4,950'	¹⁸ Formation Mesaverde	¹⁹ Contractor Not yet awarded	²⁰ Spud Date Winter, 2001

²¹ Proposed Casing and Cement Program					
Hole Size	Casing Size	Casing weight/foot	Setting Depth	Sacks of Cement	Estimated TOC
12-1/4"	8-5/8"	24.0 #/ft	400'	275 sx	Surface
7-7/8"	4-1/2"	10.5 #/ft	4,950'	950 sx	Surface

²² Describe the proposed program. If this application is to DEEPEN or PLUG BACK give the data on the present productive zone and proposed new productive zone. Describe the blowout prevention program, if any. Use additional sheets if necessary.

Drill to 400' Run new 8-5/8" csg. Cement csg w/275 sx cl "G" cement (15.8 ppg, 1.145 cuft/sx) w/2% CaCl₂ & 1/4# Celloflake. Attempt to circ cement to surface. NU BOP. Test BOP. Mix mud. Drill ahead w/7-7/8 hole.

Drill to TD (@ 4,950'). Log well. Run new 4-1/2" csg to btm. Cement csg with approx 475 sx cl "G" with 3% extender, 2% CaCl₂ and 1/4# celloflake mixed @ 11.4 ppg, 2.88 cuft/sx followed by 475 sx cl "G" cement with 3% extender, 2% CaCl₂ and 1/4# celloflake mixed @ 13.5 ppg, 1.71 cuft/sx. Attempt to circ cement to surface. Final cement volumes will be obtained from caliper log + 30%. See enclosed drawing for BOP stack configuration.

²³ I hereby certify that the information given above is true and complete to the best of my knowledge and belief.

Signature:

Printed name: Jeffrey W. Patton

Title: Drilling Engineer

OIL CONSERVATION DIVISION

Approved by:

Title:

Approval Date: SEP 25 2000 Expiration Date: SEP 25 2001

District I
PO Box 1980, Hobbs, NM 88241-1980

District II
PO Drawer DD, Artesia, NM 88211-0719

District III
1000 Rio Brazos Rd., Aztec, NM 87410

District IV
PO Box 2088, Santa Fe, NM 87504-2088

State of New Mexico
Energy, Minerals & Natural Resources Department

OIL CONSERVATION DIVISION
PO Box 2088
Santa Fe, NM 87504-2088

Form C-102

Revised February 21, 1994

Instructions on back

Submit to Appropriate District Office

State Lease - 4 Copies

Fee Lease - 3 Copies

☐ AMENDED REPORT

WELL LOCATION AND ACREAGE DEDICATION PLAT

*API Number 30045-30374		*Pool Code 72319	*Pool Name BLANCO MESAVERDE
*Property Code 22856	*Property Name MONTROYA COM		*Well Number 1C
*GRID No. 167067	*Operator Name CROSS TIMBERS OPERATING COMPANY		*Elevation 5871

¹⁰ Surface Location

UL or lot no.	Section	Township	Range	Lot Ion	Feet from the	North/South line	Feet from the	East/West line	County
J	25	32N	13W		1805	SOUTH	1950	EAST	SAN JUAN

¹¹ Bottom Hole Location If Different From Surface

UL or lot no.	Section	Township	Range	Lot Ion	Feet from the	North/South line	Feet from the	East/West line	County

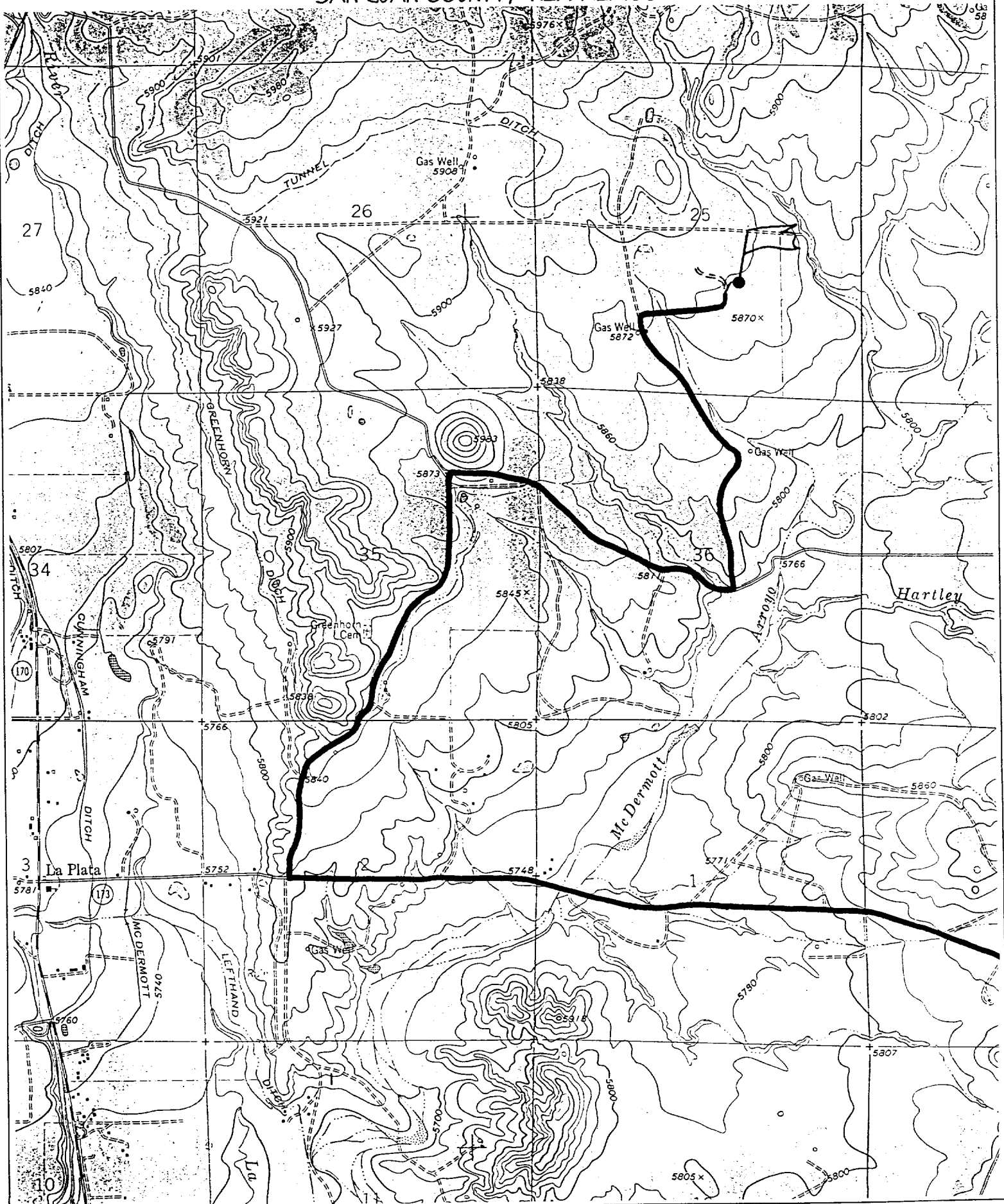
¹² Dedicated Acres 320 5/2	¹³ Joint or Infill I	¹⁴ Consolidation Code	¹⁵ Order No.
--	------------------------------------	----------------------------------	-------------------------

NO ALLOWABLE WILL BE ASSIGNED TO THIS COMPLETION UNTIL ALL INTERESTS HAVE BEEN CONSOLIDATED
OR A NON-STANDARD UNIT HAS BEEN APPROVED BY THE DIVISION

¹⁶ 1331.22' 2632.74' 2677.62' 5223.90'	1314.06' 25 1805'	2628.12' 2774.64' 2638.68' 1950'	¹⁷ OPERATOR CERTIFICATION I hereby certify that the information contained herein is true and complete to the best of my knowledge and belief. Loren W. Fothergill Signature Loren W. Fothergill Printed Name Production Engineer Title 9-20-00 Date ¹⁸ SURVEYOR CERTIFICATION I hereby certify that the well location shown on this plat was plotted from field notes of actual surveys made by me or under my supervision, and that the same is true and correct to the best of my belief. FEBRUARY 19, 2000 Date of Survey Signature and Seal of Registered Professional Surveyor NEALE C. EDWARDS NEW MEXICO 6857 Certificate 5857
---	-------------------------	---	--

CROSS TIMBER OPERATING COMPANY M. NTOYA COM #1C

1805' FSL & 1950' FEL, SECTION 25, T32N, R13W, N.M.P.M.
SAN JUAN COUNTY, NEW MEXICO





Cross Timbers Operating Company

BOP SCHEMATIC FOR DRILLING OPERATIONS CLASS 1 NORMAL PRESSURE

ROTATING HEAD
(OPTIONAL)

FILL UP LINE

FLOW LINE
TO PIT

BLIND
RAMS

PIPE
RAMS

TO CHOKE
MANIFOLD

See Choke Manifold drawing for
specifications

MUD CROSS

HCR VALVE (OPTIONAL)

1. Test BOP after installation:

Pressure test BOP to 200-300
psig (low pressure) for 5 min.

Test BOP to 1,500 psig (high
pressure) for 15 min.

2. Test operation of (both) rams
on every trip.

3. Check and record Accumulator
pressure on every tour.

4. Re-pressure test BOP stack after
changing out rams.

**TESTING
PROCEDURE**

