

District I  
PO Box 1980, Hobbs, NM 88241-1980  
District II  
811 South First, Artesia, NM 88210  
District III  
1000 Rio Brazos Rd., Aztec, NM 87410  
District IV  
2040 South Pacheco, Santa Fe, NM 87505

State of New Mexico  
Energy, Minerals & Natural Resources Department

OIL CONSERVATION DIVISION

2040 South Pacheco  
Santa Fe, NM 87505

Form O-101  
Revised October 18, 1994  
Instructions on back  
Submit to Appropriate District Office  
State Lease - 6 Copies  
Fee Lease - 5 Copies  
☐ AMENDED REPORT

APPLICATION FOR PERMIT TO DRILL, RE-ENTER, DEEPEN, PLUGBACK, OR ADD A ZONE

<sup>1</sup> Operator Name and Address. Burlington Resources Oil & Gas Company PO Box 4289, Farmington, NM 87499		<sup>2</sup> OGRID Number 14538
<sup>4</sup> Property Code 18505		<sup>3</sup> API Number 30 - 045- 30439
<sup>5</sup> Property Name Culpepper Martin SRC		<sup>6</sup> Well No. 1C

<sup>7</sup> Surface Location

UL or lot no.	Section	Township	Range	Lot Idn	Feet from the	North/South line	Feet from the	East/West line	County
K	21	32N	12W		1660	South	1835	West	San Juan

<sup>8</sup> Proposed Bottom Hole Location If Different From Surface

UL or lot no.	Section	Township	Range	Lot Idn	Feet from the	North/South line	Feet from the	East/West line	County

<sup>9</sup> Proposed Pool 1

Blanco Mesaverde

<sup>10</sup> Proposed Pool 2

<sup>11</sup> Work Type Code N	<sup>12</sup> Well Type Code G	<sup>13</sup> Cable/Rotary Rotary	<sup>14</sup> Lease Type Code Fee	<sup>15</sup> Ground Level Elevation 6002' GR
<sup>16</sup> Multiple N	<sup>17</sup> Proposed Depth 5153'	<sup>18</sup> Formation Mesaverde	<sup>19</sup> Contractor N/a	<sup>20</sup> Spud Date N/a

<sup>21</sup> Proposed Casing and Cement Program

Hole Size	Casing Size	Casing weight/foot	Setting Depth	Sacks of Cement	Estimated TOC
12 1/4	9 5/8	32.3#	200'	188 cu ft	Surface
8 3/4	7	20#	2789'	839 cu ft	Surface
6 1/4	4 1/2	10.5#	2689-5153'	354 cu ft	Lnr top

<sup>22</sup> Describe the proposed program. If this application is to DEEPEN or PLUG BACK give the data on the present productive zone and proposed new productive zone. Describe the blowout prevention program, if any. Use additional sheets if necessary.

11" 2000 psi minimum double gate BOP

<sup>23</sup> I hereby certify that the information given above is true and complete to the best of my knowledge and belief.

Signature:

Printed name: Peggy Cole

Title: Regulatory/Compliance Supervisor

Date:

11-27-00

Phone: 505-326-9700

OIL CONSERVATION DIVISION

Approved by:

Title: DEPUTY OIL & GAS INSPECTOR, DIST. #

Approval Date:

NOV 29 2000

Expiration Date:

NOV 29 2001

Conditions of Approval:

Attached ☐

DISTRICT I  
P.O. Box 1980, Hobbs, N.M. 88241-1980

State of New Mexico  
Energy, Minerals & Natural Resources Department

Form C-102

Revised February 21, 1994

DISTRICT II  
P.O. Drawer DD, Artesia, N.M. 88211-0719

Instructions on back  
Submit to Appropriate District Office  
State Lease - 4 Copies  
Fee Lease - 3 Copies

DISTRICT III  
1000 Rio Brazos Rd., Aztec, N.M. 87410

OIL CONSERVATION DIVISION

P.O. Box 2088  
Santa Fe, NM 87504-2088

DISTRICT IV  
PO Box 2088, Santa Fe, NM 87504-2088

☐ AMENDED REPORT

WELL LOCATION AND ACREAGE DEDICATION PLAT

<sup>1</sup> API Number 30-045-30439	<sup>2</sup> Pool Code 72319	<sup>3</sup> Pool Name Blanco Mesaverde
<sup>4</sup> Property Code 18505	<sup>5</sup> Property Name CULPEPPER MARTIN S.R.C.	<sup>6</sup> Well Number 1C
<sup>7</sup> GRID No. 14538	<sup>8</sup> Operator Name BURLINGTON RESOURCES OIL AND GAS, INC.	<sup>9</sup> Elevation 6002' —

<sup>10</sup>Surface Location

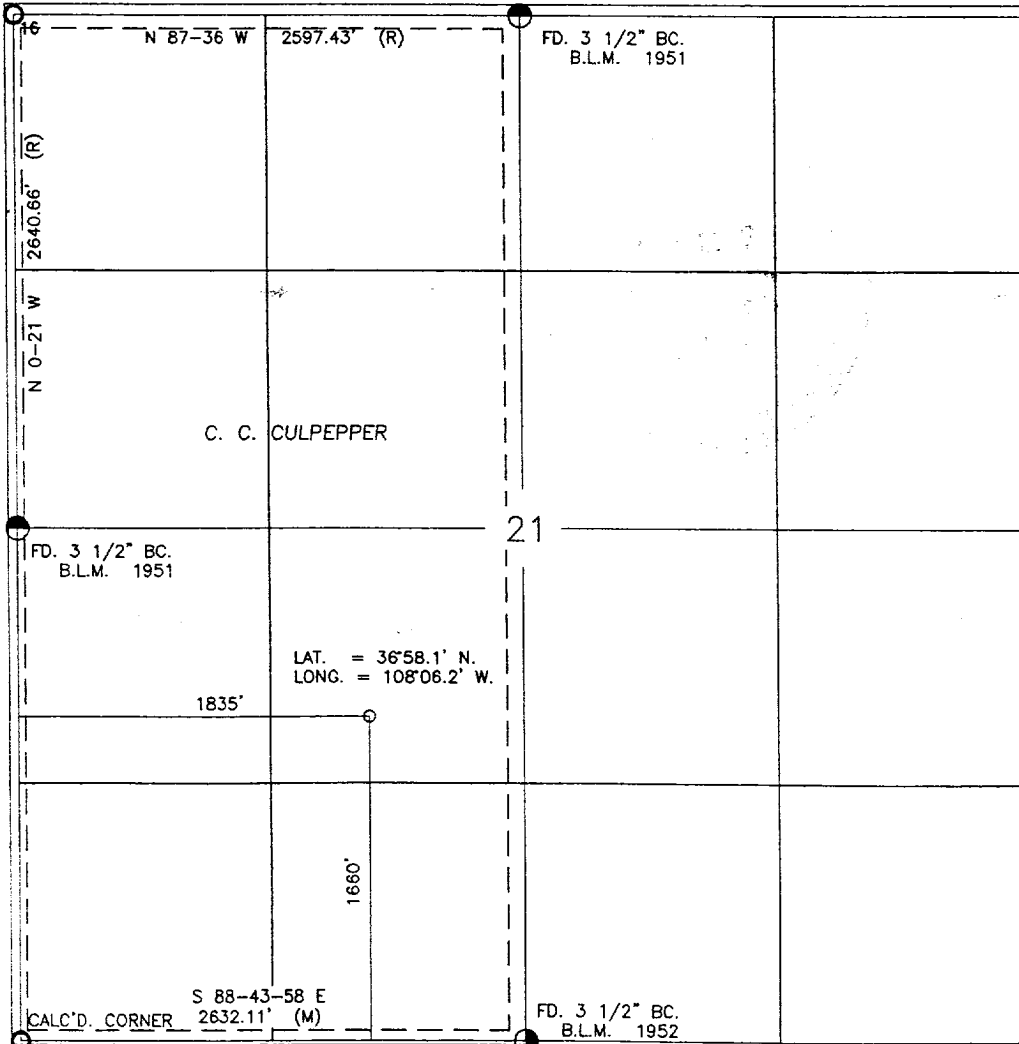
UL or lot no.	Section	Township	Range	Lot Idn	Feet from the	North/South line	Feet from the	East/West line	County
K	21	32-N	12-W		1660	SOUTH	1835	WEST	SAN JUAN

<sup>11</sup>Bottom Hole Location If Different From Surface

UL or lot no.	Section	Township	Range	Lot Idn	Feet from the	North/South line	Feet from the	East/West line	County
<sup>12</sup> Dedicated Acres W/320		<sup>13</sup> Joint or Infill		<sup>14</sup> Consolidation Code		<sup>15</sup> Order No.			

NO ALLOWABLE WILL BE ASSIGNED TO THIS COMPLETION UNTIL ALL INTERESTS HAVE BEEN CONSOLIDATED  
OR A NON-STANDARD UNIT HAS BEEN APPROVED BY THE DIVISION

CALC'D. CORNER



17 OPERATOR CERTIFICATION

I hereby certify that the information contained herein is true and complete to the best of my knowledge and belief

Peggy Cole  
Signature  
Peggy Cole  
Printed Name  
Regulatory Supervisor  
Title  
11-14-00  
Date

18 SURVEYOR CERTIFICATION

I hereby certify that the well location shown on this plat was plotted from field notes of actual surveys made by me or under my supervision, and that the same is true and correct to the best of my belief.

9-2  
Date of Survey  
Signature and Seal of Professional Surveyor:  
8894  
8894  
Certificate Number