

District I
PO Box 1980, Hobbs, NM 88241-1980
District II
811 South First, Artesia, NM 88210
District III
1000 Rio Brazos Rd., Aztec, NM 87410
District IV
2040 South Pacheco, Santa Fe, NM 87505

State of New Mexico
Energy, Minerals & Natural Resources Department

OIL CONSERVATION DIVISION
2040 South Pacheco
Santa Fe, NM 87505

Form C-101
Revised October 18, 1994
Instructions on back
Submit to Appropriate District Office
State Lease - 6 Copies
Fee Lease - 5 Copies
☐ AMENDED REPORT

APPLICATION FOR PERMIT TO DRILL, RE-ENTER, DEEPEN, PLUG BACK, OR ADD A ZONE

¹ Operator Name and Address. Burlington Resources Oil & Gas Company PO Box 4289, Farmington, NM 87499		² OGRID Number 14538
⁴ Property Code 14538 18505	⁵ Property Name Culpepper Martin SRC	³ API Number 30 - 045 - 30474
		⁶ Well No. 3M

⁷ Surface Location

UL or lot no.	Section	Township	Range	Lot Idn	Feet from the	North/South line	Feet from the	East/West line	County
C	33	32N	12W		1060	North	1905	West	San Juan

⁸ Proposed Bottom Hole Location If Different From Surface

UL or lot no.	Section	Township	Range	Lot Idn	Feet from the	North/South line	Feet from the	East/West line	County

⁹ Proposed Pool 1 Blanco Mesaverde	¹⁰ Proposed Pool 2 Basin Dakota
--	---

¹¹ Work Type Code N	¹² Well Type Code G	¹³ Cable/Rotary Rotary	¹⁴ Lease Type Code Fee	¹⁵ Ground Level Elevation 5974'
¹⁶ Multiple Y	¹⁷ Proposed Depth 7080'	¹⁸ Formation Mesaverde/Dakota	¹⁹ Contractor N/a	²⁰ Spud Date N/a

²¹ Proposed Casing and Cement Program

Hole Size	Casing Size	Casing weight/foot	Setting Depth	Sacks of Cement	Estimated TOC
12 1/4	8 5/8	32#	320'	396 cu.ft.	Surface
7 7/8	4 1/2	10.5#	7080'	2418 cu.ft.	Surface

²² Describe the proposed program. If this application is to DEEPEN or PLUG BACK give the data on the present productive zone and proposed new productive zone. Describe the blowout prevention program, if any. Use additional sheets if necessary.

11" 2000 psi minimum double gate BOP

NOTIFY AZTEC OCD
IN TIME TO WITNESS

²³ I hereby certify that the information given above is true and complete to the best of my knowledge and belief.

Signature:

Printed name: Peggy Cole

Title: Regulatory/Compliance Supervisor

Date:

1-2-01

Phone: 505-326-9700

OIL CONSERVATION DIVISION

Approved by:

Title:

DEPUTY OIL & GAS INSPECTOR, DIST. #3

Approval Date:

JAN - 3 2001

Expiration Date:

JAN - 3 2002

Conditions of Approval :

Attached ☐

DISTRICT I
P.O. Box 1980, Hobbs, N.M. 88241-1980

DISTRICT II
P.O. Drawer DD, Artesia, N.M. 88211-0719

DISTRICT III
1000 Rio Brazos Rd., Aztec, N.M. 87410

DISTRICT IV
PO Box 2088, Santa Fe, NM 87504-2088

State of New Mexico
Energy, Minerals & Natural Resources Department

Form C-102

Revised February 21, 1994

Instructions on back
Submit to Appropriate District Office
State Lease - 4 Copies
Fee Lease - 3 Copies

OIL CONSERVATION DIVISION

P.O. Box 2088
Santa Fe, NM 87504-2088

☐ AMENDED REPORT

WELL LOCATION AND ACREAGE DEDICATION PLAT

¹ API Number 30-045- <u>30474</u>	² Pool Code 72319/71599	³ Pool Name Blanco Mesaverde/Basin Dakota
⁴ Property Code 18505	⁵ Property Name CULPEPPER MARTIN S.R.C.	⁶ Well Number 3M
⁷ GRID No. 14538	⁸ Operator Name BURLINGTON RESOURCES OIL AND GAS, INC.	⁹ Elevation 5974'

¹⁰ Surface Location

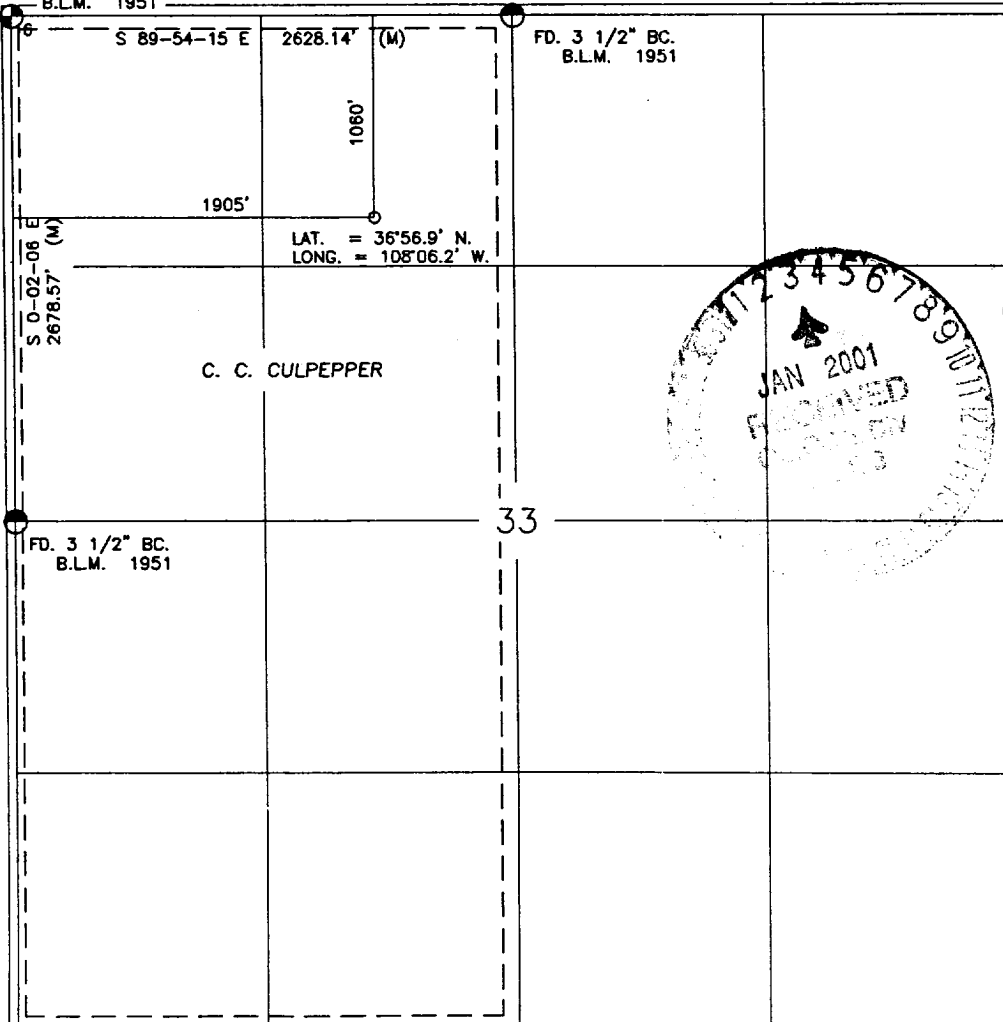
UL or lot no.	Section	Township	Range	Lot Idn	Feet from the	North/South line	Feet from the	East/West line	County
C	33	32-N	12-W		1060	NORTH	1905	WEST	SAN JUAN

¹¹ Bottom Hole Location If Different From Surface

UL or lot no.	Section	Township	Range	Lot Idn	Feet from the	North/South line	Feet from the	East/West line	County
¹² Dedicated Acres MV/DK: W/320			¹³ Joint or Infill		¹⁴ Consolidation Code		¹⁵ Order No.		

NO ALLOWABLE WILL BE ASSIGNED TO THIS COMPLETION UNTIL ALL INTERESTS HAVE BEEN CONSOLIDATED
OR A NON-STANDARD UNIT HAS BEEN APPROVED BY THE DIVISION

FD. 3 1/2" BC.
B.L.M. 1951



17 OPERATOR CERTIFICATION

I hereby certify that the information contained herein is true and complete to the best of my knowledge and belief

Peggy Cole
Signature
Peggy Cole
Printed Name
Regulatory Supervisor
Title
12-29-00
Date

18 SURVEYOR CERTIFICATION

I hereby certify that the well location shown on this plat was plotted from field notes of actual surveys made by me or under my supervision, and that the same is true and correct to the best of my belief.

ROY A. RUSH
Date of Survey
NEW MEXICO
Signature and Seal of Professional Surveyor
8894
Certificate Number