

PO Box 1980, Hobbs, NM 88241-1980

Energy, Minerals & Natural Resources Department

Revised October 18, 1994

District II

Instructions on back

811 South First, Artesia, NM 88210

OIL CONSERVATION DIVISION

Submit to Appropriate District Office

District III

2040 South Pacheco

State Lease - 6 Copies

1000 Rio Brazos Rd., Aztec, NM 87410

Santa Fe, NM 87505

Fee Lease - 5 Copies

District IV

☐ AMENDED REPORT

APPLICATION FOR PERMIT TO DRILL, RE-ENTER, DEEPEN, PLUGBACK, OR ADD A ZONE

¹ Operator Name and Address. Burlington Resources Oil & Gas Company PO Box 4289, Farmington, NM 87499		² OGRID Number 14538
⁴ Property Code 18505		³ API Number 30-045-30596
⁵ Property Name Culpepper Martin SRC		⁶ Well No. 1B

⁷ Surface Location

UL or lot no.	Section	Township	Range	Lot Idn	Feet from the	North/South line	Feet from the	East/West line	County
E	21	32N	12W		1580	North	670	West	San Juan

⁸ Proposed Bottom Hole Location If Different From Surface

UL or lot no.	Section	Township	Range	Lot Idn	Feet from the	North/South line	Feet from the	East/West line	County

⁹ Proposed Pool 1¹⁰ Proposed Pool 2

Blanco Mesaverde	
------------------	--

¹¹ Work Type Code N —	¹² Well Type Code G —	¹³ Cable/Rotary Rotary —	¹⁴ Lease Type Code Fee —	¹⁵ Ground Level Elevation 5975'GL —
¹⁶ Multiple N —	¹⁷ Proposed Depth 5110' —	¹⁸ Formation Mesaverde	¹⁹ Contractor N/a	²⁰ Spud Date N/a

²¹ Proposed Casing and Cement Program

Hole Size	Casing Size	Casing weight/foot	Setting Depth	Sacks of Cement	Estimated TOC
12 1/4	9 5/8	32.3#	200'	188 cu.ft.	Surface —
8 3/4	7	20.0#	2722'	819 cu.ft.	Surface —
6 1/4	4 1/2	10.5#	2622-5110'—	358 cu.ft.	

²² Describe the proposed program. If this application is to DEEPEN or PLUG BACK give the data on the present productive zone and proposed new productive zone. Describe the blowout prevention program, if any. Use additional sheets if necessary.

11" 2000 psi minimum double gate BOP

²³ I hereby certify that the information given above is true and complete to the best of my knowledge and belief.

Signature: *Peggy Cole*

Printed name: Peggy Cole

Title: Regulatory/Compliance Supervisor

Date: 3-15-01

Phone: 505-326-9700

OIL CONSERVATION DIVISION

Approved by: *[Signature]*

Title: DEPUTY OIL & GAS INSPECTOR DIST. III

Approval Date: MAR 19 2001

Expiration Date: MAR 19 2002

Conditions of Approval:

Attached ☐

DISTRICT I
P.O. Box 1980, Hobbs, N.M. 88241-1980

DISTRICT II
P.O. Drawer DD, Artesia, N.M. 88211-0719

DISTRICT III
1000 Rio Brazos Rd., Aztec, N.M. 87410

DISTRICT IV
PO Box 2088, Santa Fe, NM 87504-2088

State of New Mexico
Energy, Minerals & Natural Resources Department

OIL CONSERVATION DIVISION

P.O. Box 2088
Santa Fe, NM 87504-2088

Form C-102

Revised February 21, 1994

Instructions on back
Submit to Appropriate District Office
State Lease - 4 Copies
Fee Lease - 3 Copies

☐ AMENDED REPORT

WELL LOCATION AND ACREAGE DEDICATION PLAT

¹ API Number 30-045- 30596	² Pool Code 72319	³ Pool Name Blanco Mesaverde
⁴ Property Code 18505	⁵ Property Name CULPEPPER MARTIN S.R.C.	
⁷ GRID No. 14538	⁶ Operator Name BURLINGTON RESOURCES OIL AND GAS, INC.	⁸ Well Number 1B
		⁹ Elevation 5975'

¹⁰ Surface Location

UL or lot no.	Section	Township	Range	Lot Idn	Feet from the	North/South line	Feet from the	East/West line	County
E	21	32-N	12-W		1580	NORTH	670	WEST	SAN JUAN

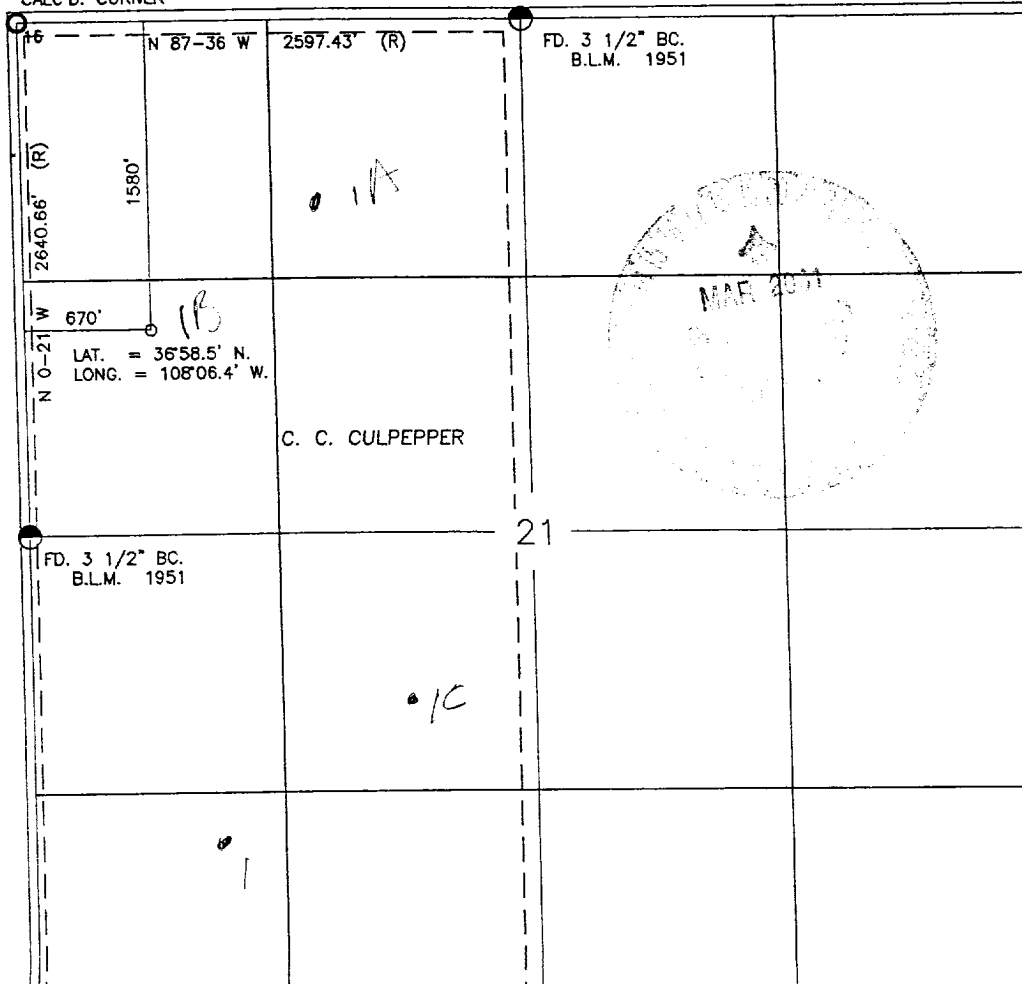
¹¹ Bottom Hole Location If Different From Surface

UL or lot no.	Section	Township	Range	Lot Idn	Feet from the	North/South line	Feet from the	East/West line	County

¹² Dedicated Acres MV/DK: W/320	¹³ Joint or Infill	¹⁴ Consolidation Code	¹⁵ Order No.
---	-------------------------------	----------------------------------	-------------------------

NO ALLOWABLE WILL BE ASSIGNED TO THIS COMPLETION UNTIL ALL INTERESTS HAVE BEEN CONSOLIDATED
OR A NON-STANDARD UNIT HAS BEEN APPROVED BY THE DIVISION

CALC'D. CORNER



17 OPERATOR CERTIFICATION

I hereby certify that the information contained herein is true and complete to the best of my knowledge and belief

Signature

Peggy Cole

Printed Name

Regulatory Supervisor

Title

Date

3-15-01

18 SURVEYOR CERTIFICATION

I hereby certify that the well location shown on this plat was plotted from field notes of actual surveys made by me or under my supervision, and that the same is true and correct to the best of my belief.

Date of Survey

Signature and Seal of Professional Surveyor

8894