

District I  
PO Box 1983, Hobbs, NM 88241-1980  
District II  
811 South First, Artesia, NM 88210  
District III  
1000 Rio Brazos Rd., Aztec, NM 87410  
District IV

State of New Mexico  
Energy, Minerals & Natural Resources Department

OIL CONSERVATION DIVISION

2040 South Pacheco  
Santa Fe, NM 87505

Form C-101

Revised October 18, 1994

Instructions on back

Submit to Appropriate District Office

State Lease - 6 Copies

Fee Lease - 5 Copies

AMENDED REPORT

APPLICATION FOR PERMIT TO DRILL, RE-ENTER, DEEPEN, PLUGBACK, OR ADD A ZONE

<sup>1</sup> Operator Name and Address. Burlington Resources Oil & Gas Company PO Box 4289, Farmington, NM 87499		<sup>2</sup> OGRID Number 14538
<sup>3</sup> API Number 30-045-30598		<sup>4</sup> Property Code 6935
<sup>5</sup> Property Name Culpepper Martin		<sup>6</sup> Well No. 13B

<sup>7</sup> Surface Location									
UL or lot no. C	Section 29	Township 32N	Range 12W	Lot Idn	Feet from the 660	North/South line North	Feet from the 1930	East/West line West	County San Juan

<sup>8</sup> Proposed Bottom Hole Location If Different From Surface									
UL or lot no.	Section	Township	Range	Lot Idn	Feet from the	North/South line	Feet from the	East/West line	County
<sup>9</sup> Proposed Pool 1 Blanco Mesaverde					<sup>10</sup> Proposed Pool 2				

<sup>11</sup> Work Type Code N —	<sup>12</sup> Well Type Code G —	<sup>13</sup> Cable/Rotary Rotary —	<sup>14</sup> Lease Type Code Fee —	<sup>15</sup> Ground Level Elevation 5933'GL —
<sup>16</sup> Multiple N —	<sup>17</sup> Proposed Depth 5035' —	<sup>18</sup> Formation Mesaverde	<sup>19</sup> Contractor N/a	<sup>20</sup> Spud Date N/a

<sup>21</sup> Proposed Casing and Cement Program					
Hole Size	Casing Size	Casing weight/foot	Setting Depth	Sacks of Cement	Estimated TOC
12 1/4	9 5/8	32.3#	200'	188 cu.ft.	Surface —
8 3/4	7	20.0#	2705'	814 cu.ft.	Surface —
6 1/4	4 1/2	10.5#	2605-5035' —	349 cu.ft.	

<sup>22</sup> Describe the proposed program. If this application is to DEEPEN or PLUG BACK give the data on the present productive zone and proposed new productive zone. Describe the blowout prevention program, if any. Use additional sheets if necessary.

11" 2000 psi minimum double gate BOP

<sup>23</sup> I hereby certify that the information given above is true and complete to the best of my knowledge and belief. Signature: <i>Peggy Cole</i> Printed name: Peggy Cole Title: Regulatory/Compliance Supervisor Date: 3-15-01 Phone: 505-326-9700	OIL CONSERVATION DIVISION Approved by: <i>[Signature]</i> Title: DEPUTY OIL & GAS INSPECTOR DIST. III Approval Date: MAR 10 2001 Expiration Date: MAR 19 2002 Conditions of Approval: Attached <input type="checkbox"/>
---	---

DISTRICT I  
P.O. Box 1980, Hobbs, N.M. 88241-1980

DISTRICT II  
P.O. Drawer DD, Artesia, N.M. 88211-0719

DISTRICT III  
1000 Rio Brazos Rd., Aztec, N.M. 87410

DISTRICT IV  
PO Box 2088, Santa Fe, NM 87504-2088

State of New Mexico  
Energy, Minerals & Natural Resources Department

OIL CONSERVATION DIVISION

P.O. Box 2088  
Santa Fe, NM 87504-2088

Form C-102

Revised February 21, 1994

Instructions on back

Submit to Appropriate District Office

State Lease - 4 Copies

Fee Lease - 3 Copies

☐ AMENDED REPORT

WELL LOCATION AND ACREAGE DEDICATION PLAT

<sup>1</sup> API Number 30-045- <b>30598</b>		<sup>2</sup> Pool Code 72319	<sup>3</sup> Pool Name Blanco Mesaverde
<sup>4</sup> Property Code 6935	<sup>5</sup> Property Name CULPEPPER MARTIN		<sup>6</sup> Well Number 13B
<sup>7</sup> OGRD No. 14538	<sup>8</sup> Operator Name BURLINGTON RESOURCES OIL AND GAS, INC.		<sup>9</sup> Elevation 5933'

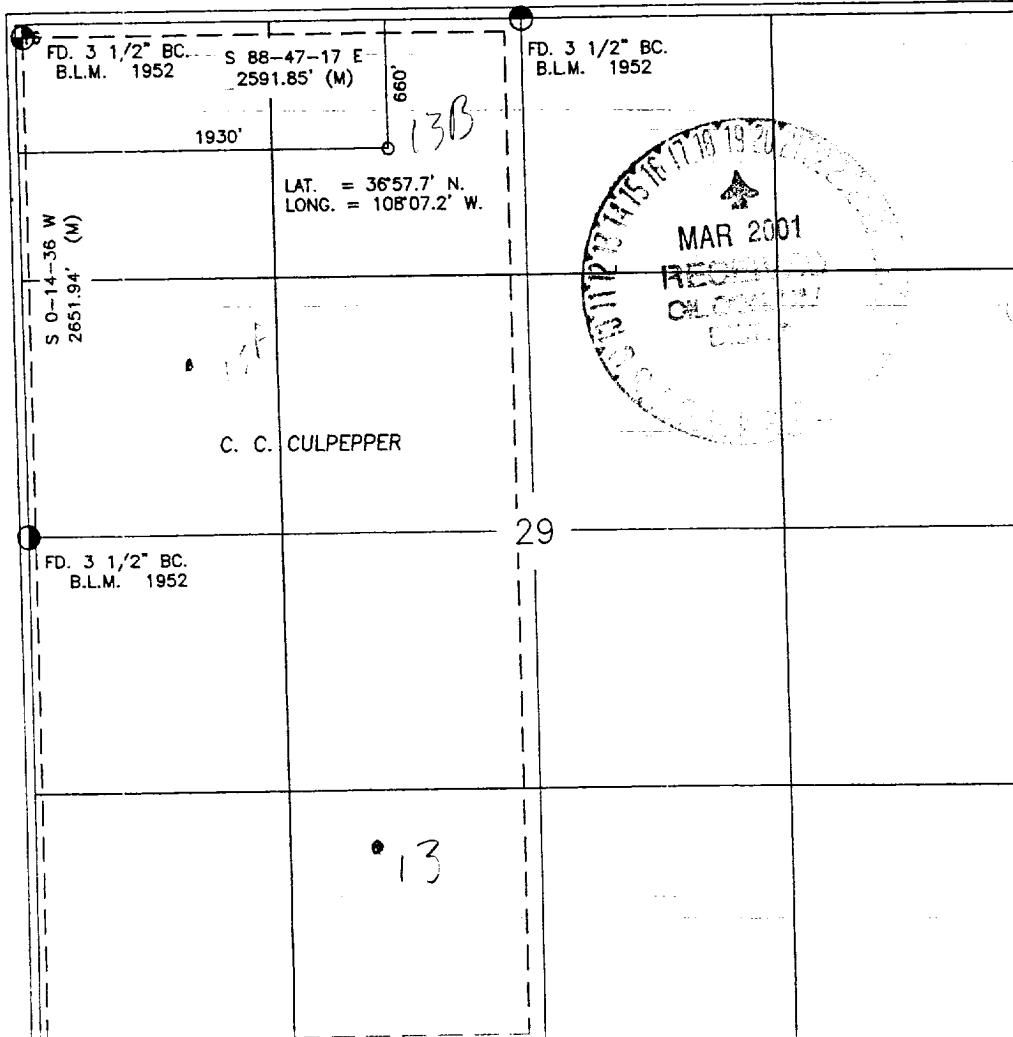
<sup>10</sup> Surface Location

UL or lot no.	Section	Township	Range	Lot Idn	Feet from the	North/South line	Feet from the	East/West line	County
C	29	32-N	12-W		660	NORTH	1930	WEST	SAN JUAN

<sup>11</sup> Bottom Hole Location If Different From Surface

UL or lot no.	Section	Township	Range	Lot Idn	Feet from the	North/South line	Feet from the	East/West line	County
<sup>12</sup> Dedicated Acres MV/DK: W/320					<sup>13</sup> Joint or Infill		<sup>14</sup> Consolidation Code		<sup>15</sup> Order No.

NO ALLOWABLE WILL BE ASSIGNED TO THIS COMPLETION UNTIL ALL INTERESTS HAVE BEEN CONSOLIDATED  
OR A NON-STANDARD UNIT HAS BEEN APPROVED BY THE DIVISION



17 OPERATOR CERTIFICATION

I hereby certify that the information contained herein is true and complete to the best of my knowledge and belief

Signature

Peggy Cole

Printed Name

Regulatory Supervisor

Title

3-16-01

Date

18 SURVEYOR CERTIFICATION

I hereby certify that the well location shown on this plat was plotted from field notes of actual surveys made by me or under my supervision, and that the same is true and correct to the best of my belief.

Date of Survey

Signature and Seal of Professional Surveyor

8894

Certificate Number