

UNITED STATES  
DEPARTMENT OF THE INTERIOR  
BUREAU OF LAND MANAGEMENT

FORM APPROVED  
OMB NO. 1004-0136  
Expires February 28, 1995

APPLICATION FOR PERMIT TO DRILL OR DEEPEN

1a. TYPE OF WORK

DRILL ☒

DEEPEN ☐

b. TYPE OF WELL

OIL WELL ☐

GAS WELL ☒

OTHER

SINGLE ZONE ☒

MULTIPLE ZONE ☐

2. NAME OF OPERATOR

Conoco Inc.

3. ADDRESS AND TELEPHONE NO.

10 Desta Drive, Suite 649W, Midland, TX 79705; 915/686-5515

4. LOCATION OF WELL (Report location clearly and in accordance with any State requirements\*)

At surface

1605' FSL & 2390' FEL

At proposed prod. Zone

1605' FSL & 2390' FEL

14. DISTANCE IN MILES AND DIRECTION FROM NEAREST TOWN OR POST OFFICE\*

15. DISTANCE FROM PROPOSED\*

LOCATION TO NEAREST  
PROPERTY OR LEASE LINE, FT.  
(Also to nearest drlg. Unit line, if any)

16. NO. OF ACRES IN LEASE

320

18. DISTANCE FROM PROPOSED LOCATION\*

TO NEAREST WELL, DRILLING, COMPLETED,  
OR APPLIED FOR, ON THIS LEASE, FT.

19. PROPOSED DEPTH

5608'

21. ELEVATIONS (Show whether DF, RT, GR, etc.)

6447' GR

5. LEASE DESIGNATION AND SERIAL NO.

SF-078147

6. INDIAN, ALLOTTEE OR TRIBE NAME

Blance Mesaverde

7. UNIT AGREEMENT NAME

8. FARM OR LEASE NAME WELL NO.

Moore LS 3B

9. API WELL NO.

30-045-30599

10. FIELD AND POOL, OR WILDCAT

Blance Mesaverde

11. SEC., T., R., M., OR BLK.  
AND SURVEY OR AREA

Sec. 13, T32N, R12W

12. COUNTY OR PARISH

San Juan

13. STATE

NM

17. NO. OF ACRES ASSIGNED  
TO THIS WELL

320 S/2

20. ROTARY OR CABLE TOOLS

Rotary

22. APPROX. DATE WORK WILL START\*

5/1/01

PROPOSED CASING AND CEMENTING PROGRAM

SIZE OF HOLE	GRADE, SIZE OF CASING	WEIGHT PER FOOT	SETTING DEPTH	QUANTITY OF CEMENT
12 1/4"	J-55; 9 5/8"	36#	285'	141 sxs, circ.
8 3/4"	J-55; 7"	20#	2280	186 sxs, circ.
6 1/4"	J-55; 4 1/2"	10.5#	5608'	283 sxs, toc @ 2180'

It is proposed to drill a vertical wellbore to Blanco Mesaverde pool. An NOS was filed 1/19/01. The well will be drilled and equipped according to the following additional attachments:

1. Well Location & Acreage Dedication Plat (C-102).
2. Proposed Well Plan Outline.
3. Cementing Plan.
4. Blowout Preventer Hookup.
5. Surface Use Plan.
6. Production Facility Layout.

This location is located on Fee lands owned by Duane Miller, therefore we will not be filing for the pipeline ROW with this APD.

Fee Surface  
Federal Minerals

IN ABOVE SPACE DESCRIBE PROPOSED PROGRAM: If proposal is to deepen give data on present productive zone and proposed new productive zone. If proposal is to drill or deepen directionally, give pertinent data on subsurface locations and measured and true vertical depths. Give blowout preventer program, if any.

25. SIGNED Michelle Y. Manley TITLE Sr. Right-of-Way Agent

DATE 3/03/01

PERMIT NO.

APPROVAL DATE

Application approval does not warrant or certify that the applicant holds legal or equitable title to those rights in the subject lease which would entitle the applicant to conduct operations thereon.

CONDITIONS OF APPROVAL, IF ANY:

1a/V.R. Ballinger

MAR 28

APPROVED BY

TITLE

DATE

\*See Instructions On Reverse Side

Title 18 U.S.C. Section 1001, makes it a crime for any person knowingly and willfully to make to any department or agency of the United States any false, fictitious or fraudulent statements or representations as to any matter within its jurisdiction.

410000

District I  
PO Box 1980, Hobbs, NM 88241-1980

State of New Mexico  
Energy, Minerals & Natural Resources Department

Form C-102  
Revised February 21, 1994  
Instructions on back

District II  
PO Drawer DD, Artesia, NM 88211-0719

OIL CONSERVATION DIVISION  
PO Box 2088  
Santa Fe, NM 87504-2088

Submit to Appropriate District Office  
State Lease - 4 Copies  
Fee Lease - 3 Copies

District III  
1000 Rio Brazos Rd., Aztec, NM 87410

District IV  
PO Box 2088, Santa Fe, NM 87504-2088

AMENDED REPORT

WELL LOCATION AND ACREAGE DEDICATION PLAT

<sup>1</sup> API Number 30-045-30599	<sup>2</sup> Pool Code 72319	<sup>3</sup> Pool Name BLANCO MESAVERDE
<sup>4</sup> Property Code 22413	<sup>5</sup> Property Name MOORE LS	<sup>6</sup> Well Number 38
<sup>7</sup> OGRID No. 005073	<sup>8</sup> Operator Name CONOCO, INC.	<sup>9</sup> Elevation 6447'

<sup>10</sup> Surface Location

UL or lot no.	Section	Township	Range	Lot Idn	Feet from the	North/South line	Feet from the	East/West line	County
J	13	32N	12W		1605	SOUTH	2390	EAST	SAN JUAN

<sup>11</sup> Bottom Hole Location If Different From Surface

UL or lot no.	Section	Township	Range	Lot Idn	Feet from the	North/South line	Feet from the	East/West line	County

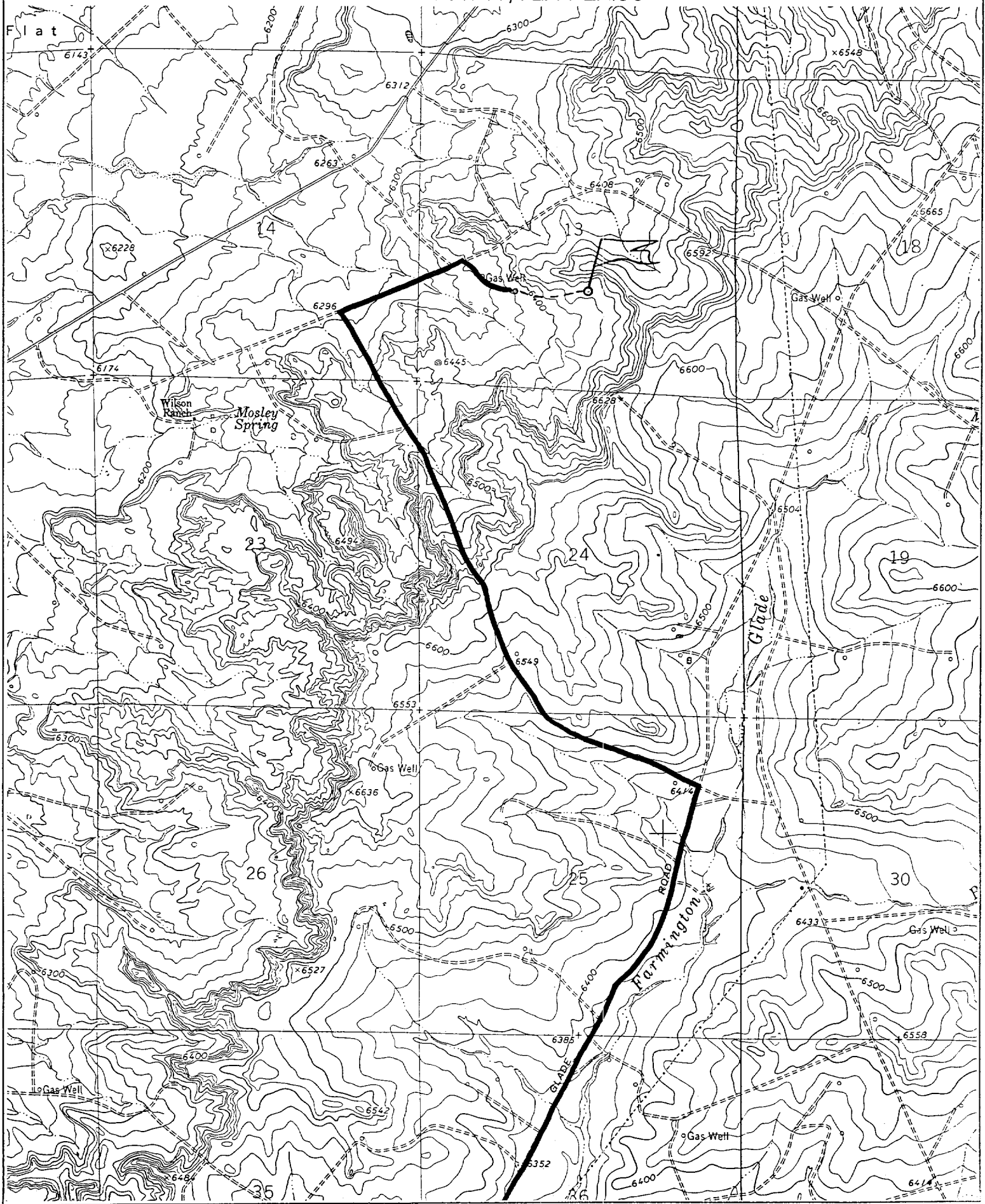
<sup>12</sup> Dedicated Acres 320.0 Acres (S/2)	<sup>13</sup> Joint or Infill	<sup>14</sup> Consolidation Code	<sup>15</sup> Order No.
--	-------------------------------	----------------------------------	-------------------------

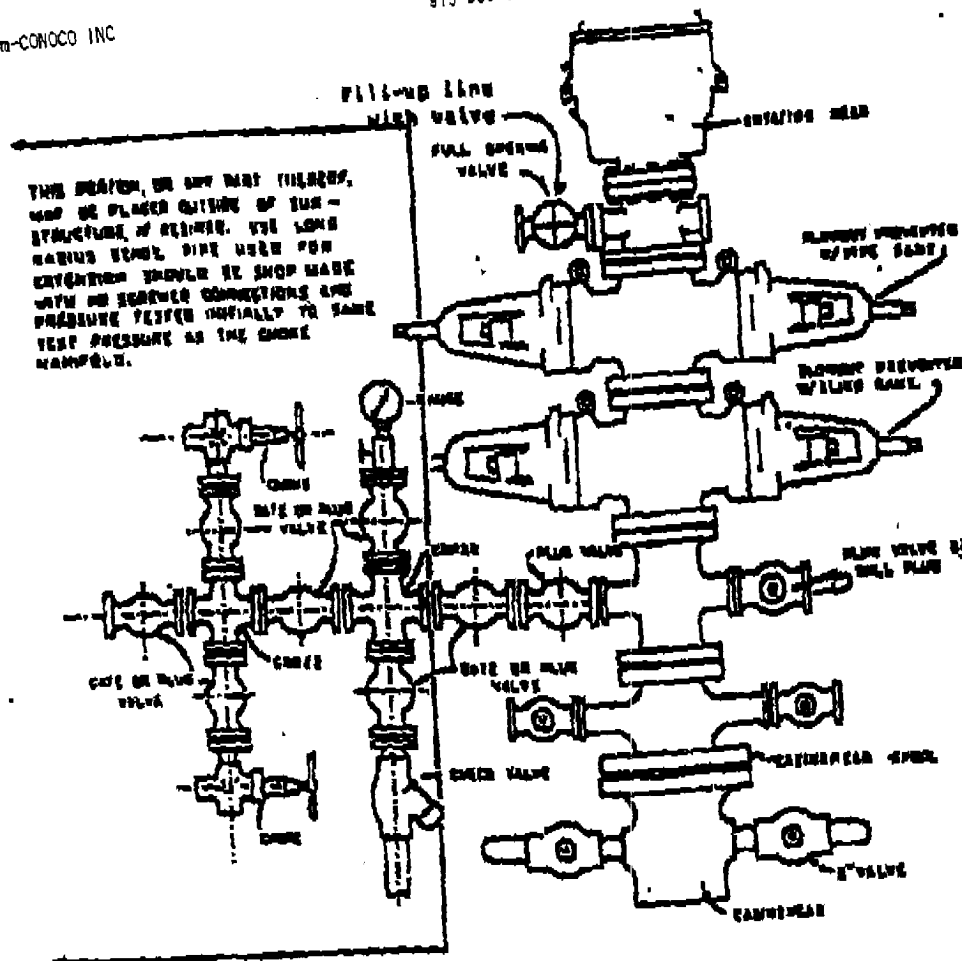
NO ALLOWABLE WILL BE ASSIGNED TO THIS COMPLETION UNTIL ALL INTERESTS HAVE BEEN CONSOLIDATED  
OR A NON-STANDARD UNIT HAS BEEN APPROVED BY THE DIVISION

<sup>15</sup> 2622.18'	5150.64'	<sup>16</sup> OPERATOR CERTIFICATION I hereby certify that the information contained herein is true and complete to the best of my knowledge and belief.  Signature JoAnn Johnson Printed Name Sr. Property Analyst Title 2-5-01 Date
	2628.12'	
2687.52'	3. SF-078147 3A 2390'	<sup>17</sup> SURVEYOR CERTIFICATION I hereby certify that the well location shown on this plat was plotted from field notes of actual surveys made by me or under my supervision, and that the same is true and correct to the best of my belief.  DECEMBER 15, 2000 Date of Survey Signature and Seal of Professional Surveyor NEALE G. EDWARDS NEW MEXICO 6857 Certificate 6857
	1605'	
	5200.14'	

CONOCO, INC. MOORE LS #3B

1605' FSL & 2390' FEL, SECTION 13, T32N, R12W, N.M.P.M.  
SAN JUAN COUNTY, NEW MEXICO





### BLOWOUT PREVENTER HOOKUP

Drilling contractors used in the San Juan Basin supply 3000 psi equipment, but cannot provide annular preventers because of sub-structure limitations. Maximum anticipated surface pressures for this well will not exceed the working pressure of the proposed BOP system. Please see the attached BOP diagram details 3000 psi equipment according to Onshore Order No. 1 even though the equipment will test to 3000 psi. The 3000 psi system allows deletion of the annular preventer and fulfills your requirements (note diagram No. 1). In addition, the following equipment will comprise the 3000 psi system:

1. Two rams with one blind and one pipe ram.
2. Kill line (2 inch maximum).
3. One kill line valve.
4. One choke line valve.
5. Two chokes (reference diagram No. 1).
6. Upper Kelly cock valve with handle.
7. Safety valve and subs to fit all drill strings in use.
8. Two-inch minimum choke line.
9. Pressure gauge on choke manifold.
10. Fill-up line above the upper most preventer.
11. Rotating head.

YEAR	AVG MCED	MID-YEAR	AVG BORD
2000	42	0	0
2001	41	0	0
2002	40	0	0
2003	38	0	0
2004	37	0	0
2005	36	0	0
2006	35	0	0
2007	34	0	0
2008	33	0	0
2009	32	0	0
2010	31	0	0
2011	30	0	0
2012	29	0	0
2013	28	0	0
2014	27	0	0
2015	27	0	0
2016	26	0	0
2017	25	0	0
2018	24	0	0
2019	24	0	0
2020	23	0	0
2021	22	0	0
2022	22	0	0
2023	21	0	0
2024	20	0	0
2025	20	0	0
2026	19	0	0
2027	19	0	0

### PRODUCTION FORECAST FOR SUBTRACTION METHOD COMINGLE ALLOCATION

