

NEW MEXICO OIL CONSERVATION COMMISSION
Santa Fe, New Mexico

NOTICE OF INTENTION TO DRILL OR RECOMPLETE

Notice must be given to the District Office of the Oil Conservation Commission and approval obtained before drilling or recompletion begins. If changes in the proposed plan are considered advisable, a copy of this notice showing such changes will be returned to the sender. Submit this notice in **QUINTUPPLICATE**. One copy will be returned following approval. See additional instructions in Rules and Regulations of the Commission. **If State Land submit 6 Copies**

Astec, New Mexico

(Place)

February 14, 1956

(Date)

OIL CONSERVATION COMMISSION
SANTA FE, NEW MEXICO

Gentlemen:

You are hereby notified that it is our intention to commence the (Drilling) (Recompletion) of a well to be known as

Malberne Oil Corporation

(Company or Operator)

Troxell

(Lease)

A-1

I

(Unit)

located **1465** feet from the **South** line and **330** feet from the

East

line of Section **15**, T **29N**, R **11W**, NMPM.

(GIVE LOCATION FROM SECTION LINE) **Farmington-Bloomfield** Pool, **San Juan** County

If State Land the Oil and Gas Lease is No.

If patented land the owner is **Ollie and Opal Troxell and Geo. F.**

Address **Bruington** Address: **Bloomfield Aztec, N.Mex.**

We propose to drill well with drilling equipment as follows:

Cable Tools

The status of plugging bond is **Blanket Bond on file**

Drilling Contractor **E.L. Shelton**

We intend to complete this well in the **Farmington sand stone** formation at an approximate depth of **850** feet.

CASING PROGRAM

We propose to use the following strings of Casing and to cement them as indicated:

| Size of Hole | Size of Casing | Weight per Foot | New or Second Hand | Depth | Sacks Cement |
|---------------|----------------|-----------------|--------------------|------------|--------------|
| 10 3/4 | 10 3/4 | | new | 90 | |
| 5 1/4 | 5 1/4 | | new | 740 | 100 |
| | | | | | |
| | | | | | |

If changes in the above plans become advisable we will notify you immediately.

ADDITIONAL INFORMATION (If recompletion give full details of proposed plan of work.)

Approved **2-21-56**, 19**56**
Except as follows:

Sincerely yours,

Malberne Oil Corporation

(Company or Operator)

By **Art Kittell**

Position **Supt.**

Send Communications regarding well to

Name **Art Kittell**

Bloomfield, New Mexico

OIL CONSERVATION COMMISSION

By **Ernest C. Smith**



NEW MEXICO
OIL CONSERVATION COMMISSION

Form C-128

Well Location and/or Gas Proration Plat

Date 8 FEBRUARY 1956

WHE OIL CORPORATION

Lease Troxell

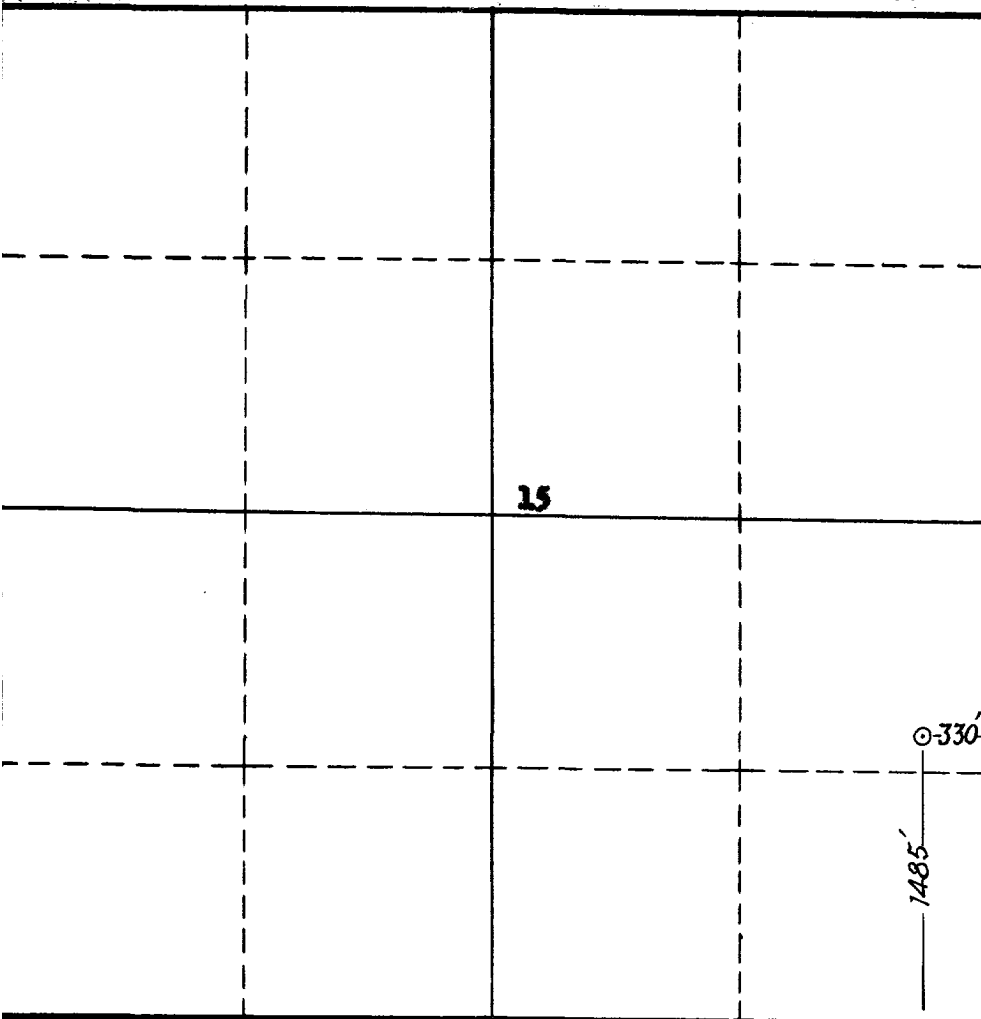
Section 15 Township 29 NORTH Range 11 WEST NMPM

1485 Feet From the SOUTH Line, 330 Feet From the EAST Line,

LAN JUAN County, New Mexico. G. L. Elevation 5511.5 UNGRADED

ng Formation FARMINGTON Pool Blossell F Dedicated Acreage 40

(Note: All distances must be from outer boundaries of Section)



SCALE: 1"=1000'

Dual Comp. ? Yes No .

to Question 1 is yes, are there
ly completed wells within the
age? Yes No .

This is to certify that the above plat was
prepared from field notes of actual surveys
made by me or under my supervision and
that the same are true and correct to the
best of my knowledge and belief.

Date Surveyed 8 FEBRUARY 1956

James P. Lee
Registered Professional Engineer and/or
Land Surveyor James P. Lee
N. Mex. Reg. No. 1463

OIL CONSERVATION COMMISSION

AZTEC DISTRICT OFFICE

No. Copies Received

5

DISTRIBUTION IN

| | | |
|---------------------------|---|---|
| Director | 1 | |
| Asst. Dir. | 1 | |
| Asst. Dir. - Gen. Inv. | | |
| Asst. Dir. - Res. & Eval. | | |
| Asst. Dir. - Tech. Serv. | 2 | |
| Asst. Dir. - Admin. Serv. | 1 | ✓ |