

NEW MEXICO OIL CONSERVATION COMMISSION  
Santa Fe, New Mexico

Form C-101  
Revised (12/1/55)

NOTICE OF INTENTION TO DRILL

Notice must be given to the District Office of the Oil Conservation Commission and approval obtained before drilling or recompletion begins. If changes in the proposed plan are considered advisable, a copy of this notice showing such changes will be returned to the sender. Submit this notice in QUINTUPPLICATE. One copy will be returned following approval. See additional instructions in Rules and Regulations of the Commission. If State Land submit 6 Copies Attach Form C- 128 in triplicate to first 3 copies of form C-101 on all wells.  
Gavilan, New Mexico January 3, 1957

(Place)


(Date)

OIL CONSERVATION COMMISSION  
SANTA FE, NEW MEXICO

Gentlemen:

You are hereby notified that it is our intention to commence the Drilling of a well to be known as  
**San Juan Gas Corporation**

Fee (Company or Operator) **20-F** in **Gavilan** Well No. **20-F** The well is located **1650** (Lease) **South** **1650** (Unit) feet from the **East** line and **20** **26 North** line and **2 West** feet from the line of Section **20**, T. **26 North**, R. **2 West**, NMPM.  
(GIVE LOCATION FROM SECTION LINE) Pool, County

D	C	B	A
E	F	G	H
L	K		I
M	N	O	P

If State Land the Oil and Gas Lease is No. **J. T. Alexander (and others)**  
If patented land the owner is **Lindrith, New Mexico**  
Address **Model L 128 Cardwell**  
We propose to drill well with drilling equipment as follows:

The status of plugging bond is **State-wide**  
Drilling Contractor **Rio Arriba Drilling Company**

We intend to complete this well in the **Pictured Cliffs Sandstone** formation at an approximate depth of **3500'** feet.

CASING PROGRAM

We propose to use the following strings of Casing and to cement them as indicated:

Size of Hole	Size of Casing	Weight per Foot	New or Second Hand	Depth	Sacks Cement
<b>11"</b>	<b>8-5/8"</b>	<b>24 lb.</b>	<b>New</b>	<b>Approx. 100'</b>	<b>50</b>
<b>7-7/8"</b>	<b>5-1/2"</b>	<b>14 lb.</b>	<b>New</b>	<b>Approx. 3500'</b>	<b>150</b>

If changes in the above plans become advisable we will notify you immediately.

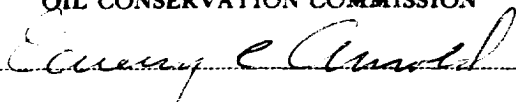
ADDITIONAL INFORMATION

Approved  
Except as follows:

**1-7**, 19 **57**

OIL CONSERVATION COMMISSION

By



Sincerely yours,

**San Juan Gas Corporation**

(Company or Operator)  
By **Robert C. Larsen**  
Position **Vice President**  
Name **San Juan Gas Corporation**  
Address **1100 Colcord Building**  
**Oklahoma City, Oklahoma**



NEW MEXICO  
OIL CONSERVATION COMMISSION

Form C-128

Well Location and/or Gas Proration Plat

Date January 3, 1957

Operator SAN JUAN GAS CORPORATION

Lease J. T. Alexander - Fee

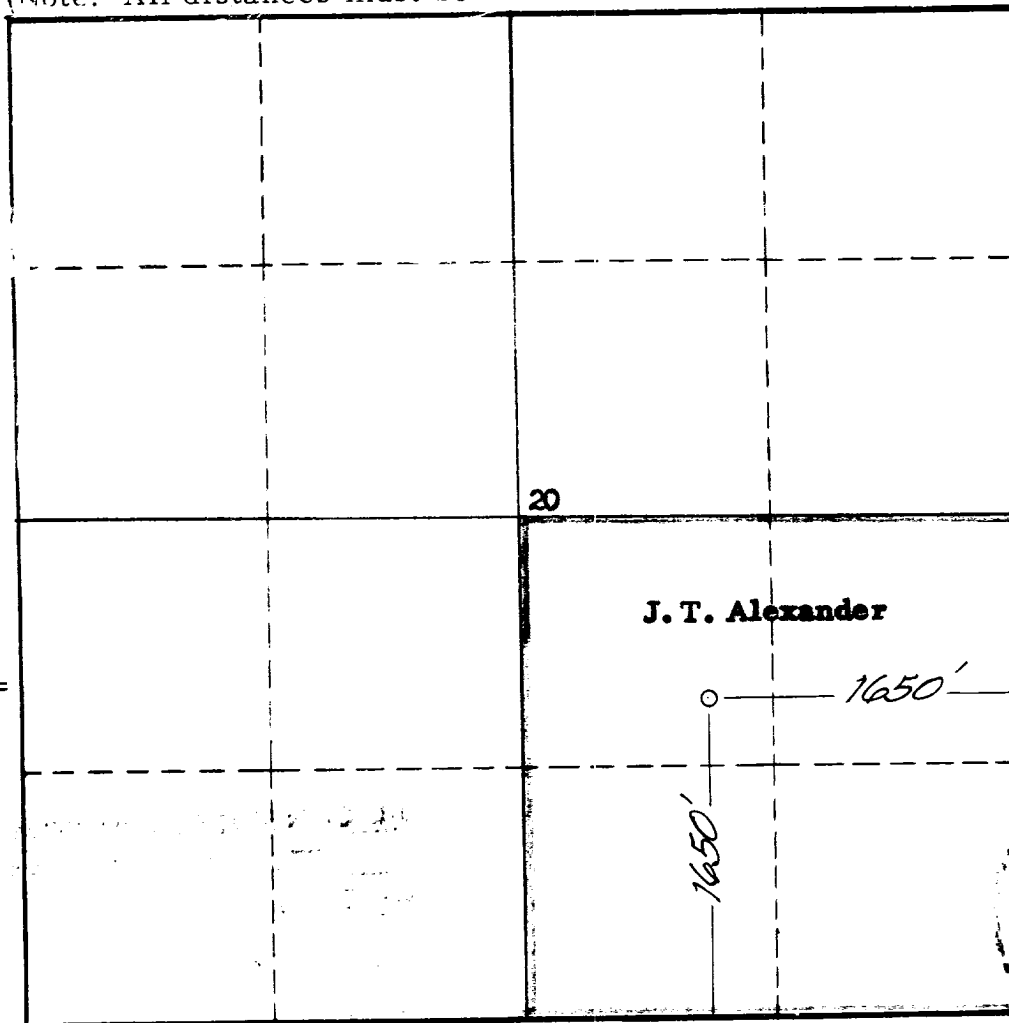
Well No. 20-F Fee Section 20 Township 26 NORTH Range 2 WEST, NMPM

Located 1650 Feet From the SOUTH Line, 1650 Feet From the EAST Line,

RIO ARRIBA County, New Mexico. G. L. Elevation 7311.6 UNGRADED.

Name of Producing Formation Pictured Cliffs Pool Gavilan W.C. Dedicated Acreage 160

(Note: All distances must be from outer boundaries of Section)



NOTE

This section of form is to be used for gas wells only.



1. Is this Well a Dual Comp. ? Yes      No X

2. If the answer to Question 1 is yes, are there any other dually completed wells within the dedicated acreage? Yes      No     

Name Rolbert C. Larson  
Position Vice President  
Representing San Juan Gas Corporation  
Address 1716 First National Building  
Tulsa, Oklahoma

This is to certify that the above plat was prepared from field notes of actual surveys made by me or under my supervision and that the same are true and correct to the best of my knowledge and belief.

Date Surveyed 10 DECEMBER 1956

James P. Leese  
Registered Professional Engineer and/or  
Land Surveyor James P. Leese  
N. Mex. Reg. No. 1463

**OIL CONSERVATION COMMISSION**  
**AZTEC DISTRICT OFFICE**

No. Copies Received 6

**DISTRIBUTION**

	NO. FURNISHED	
Operator	<u>2</u>	
Santa Fe	<u>1</u>	
Peroration Office		
State Land Office		
U. S. G. S.	<u>2</u>	
Transporter		
File	<u>1</u>	<input checked="" type="checkbox"/>