

UNITED STATES
DEPARTMENT OF THE INTERIOR
GEOLOGICAL SURVEY

APPLICATION FOR PERMIT TO DRILL, DEEPEN, OR PLUG BACK

1a. TYPE OF WORK

DRILL ☒DEEPEN ☐PLUG BACK ☐

b. TYPE OF WELL

OIL
WELL ☐GAS
WELL ☒

OTHER

SINGLE
ZONE ☒MULTIPLE
ZONE ☐

2. NAME OF OPERATOR

AMOCO PRODUCTION COMPANY

3. ADDRESS OF OPERATOR

501 Airport Drive, Farmington, New Mexico 87401

4. LOCATION OF WELL (Report location clearly and in accordance with any State regulations.)

At surface

1530' FSL and 1770' FWL

At proposed prod. zone

14. DISTANCE IN MILES AND DIRECTION FROM NEAREST TOWN OR POST OFFICE*

7 1/4 miles SE of Farmington, New Mexico

15. DISTANCE FROM PROPOSED*

LOCATION TO NEAREST
PROPERTY OR LEASE LINE, FT.
(Also to nearest drg. unit line, if any)

1530'

18. DISTANCE FROM PROPOSED LOCATION*

TO NEAREST WELL, DRILLING, COMPLETED,
OR APPLIED FOR, ON THIS LEASE, FT.

2600'

21. ELEVATIONS (Show whether DF, RT, GR, etc.)

5575' GL

23.

PROPOSED CASING AND CEMENTING PROGRAM

SIZE OF HOLE	SIZE OF CASING	WEIGHT PER FOOT	SETTING DEPTH	QUANTITY OF CEMENT
12 1/4"	8 5/8" (New)	24# K-55	300'	300 sx Class "B" w/2% CaCl ₂ -circ.
7 7/8"	4 1/2" (New)	10.5# K-55	5980'	Stage 1- 335 sx Class "B" 50/50 POZ 6% gel, 2# med tuf plug/sx, and 0.8% FLA. Tail in w/100 sx Class "B" neat-circ. Stage 2-980 sx Class "B" 65/35 POZ, 6% gel, 2# med tuf plug/sx, and 0.8% FLA. Tail in w/100 sx Class "B" Neat-circ.

This application to drill an Infill Basin Dakota well is pursuant to Order No. R-1670-V approved by the NMOCC on May 22, 1979. This well will qualify under Section 103 of the Natural Gas Policy Act under Order No. R-1670-V. The gas from this well is dedicated to El Paso Natural Gas Contract No. 56742.

DV Tool Set at 3830'

IN ABOVE SPACE DESCRIBE PROPOSED PROGRAM: If proposal is to deepen or plug back, give data on present productive zone and proposed new productive zone. If proposal is to drill or deepen directionally, give pertinent data on subsurface locations and measured and true vertical depths. Give blowout preventer program, if any.

24.

SIGNED

District Engineer

TITLE

District Engineer

DATE

2/26/81

(This space for Federal or State office use)

PERMIT NO.

APPROVAL DATE

APPROVED BY

TITLE

CONDITIONS OF APPROVAL, IF ANY:

APPROVED
AS AMENDED

DATE

MAR 17 1981

James F. Slijs
JAMES F. Slijs
DISTRICT ENGINEER

NMOCC

OIL CONSERVATION DIVISION

STATE OF NEW MEXICO
ENERGY AND MINERALS DEPARTMENTP. O. BOX 2088
SANTA FE, NEW MEXICO 87501Form C-107
Revised 10-1-78

All distances must be from the outer boundaries of the Section.

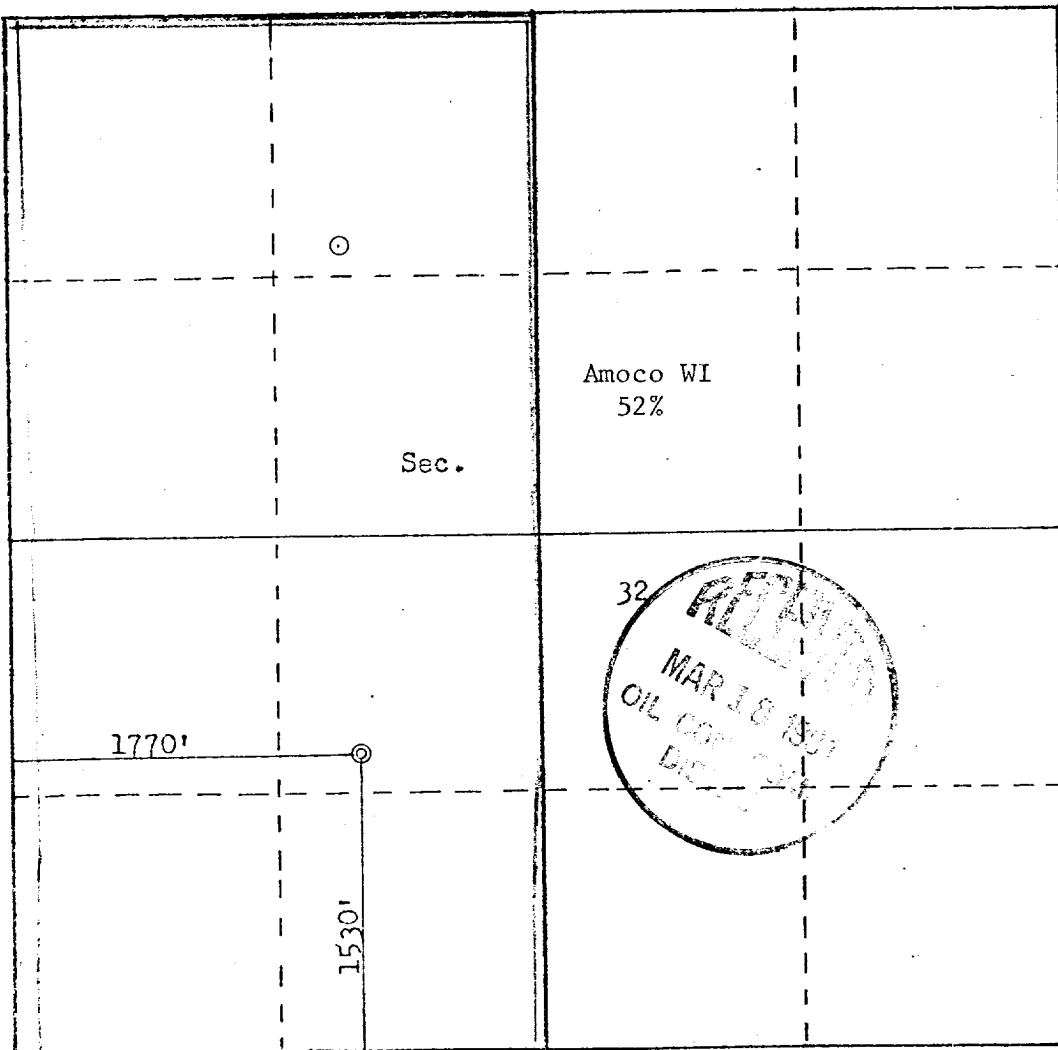
Operator AMOCO PRODUCTION COMPANY		Lease GALLEGOS CANYON UNIT		Well No. 190E
Unit Letter K	Section 32	Township 28N	Range 12W	County San Juan
Actual Footage Location of Well: 1530 feet from the South line and 1770 feet from the West line				
Ground Level Elev. 5575	Producing Formation Dakota	Pool Basin Dakota	Dedicated Acreage: 320 Acres	

1. Outline the acreage dedicated to the subject well by colored pencil or hachure marks on the plat below.
2. If more than one lease is dedicated to the well, outline each and identify the ownership thereof (both as to working interest and royalty).
3. If more than one lease of different ownership is dedicated to the well, have the interests of all owners been consolidated by communitization, unitization, force-pooling, etc?

☒ Yes ☐ No If answer is "yes," type of consolidation Unitization

If answer is "no," list the owners and tract descriptions which have actually been consolidated. (Use reverse side of this form if necessary.)

No allowable will be assigned to the well until all interests have been consolidated (by communitization, unitization, forced-pooling, or otherwise) or until a non-standard unit, eliminating such interests, has been approved by the Commission.



Scale: 1"=1000'

CERTIFICATION

I hereby certify that the information contained herein is true and complete to the best of my knowledge and belief.

Wayne L. Peterson

Name

W. L. Peterson

Position

District Engineer

Company

Amoco Production Company

Date

1-6-81

I hereby certify that the well location shown on this plat was plotted from field notes of actual surveys made by me or under my supervision, and that the same is true and correct to the best of my knowledge and belief.

Date Surveyed

December 8, 1980

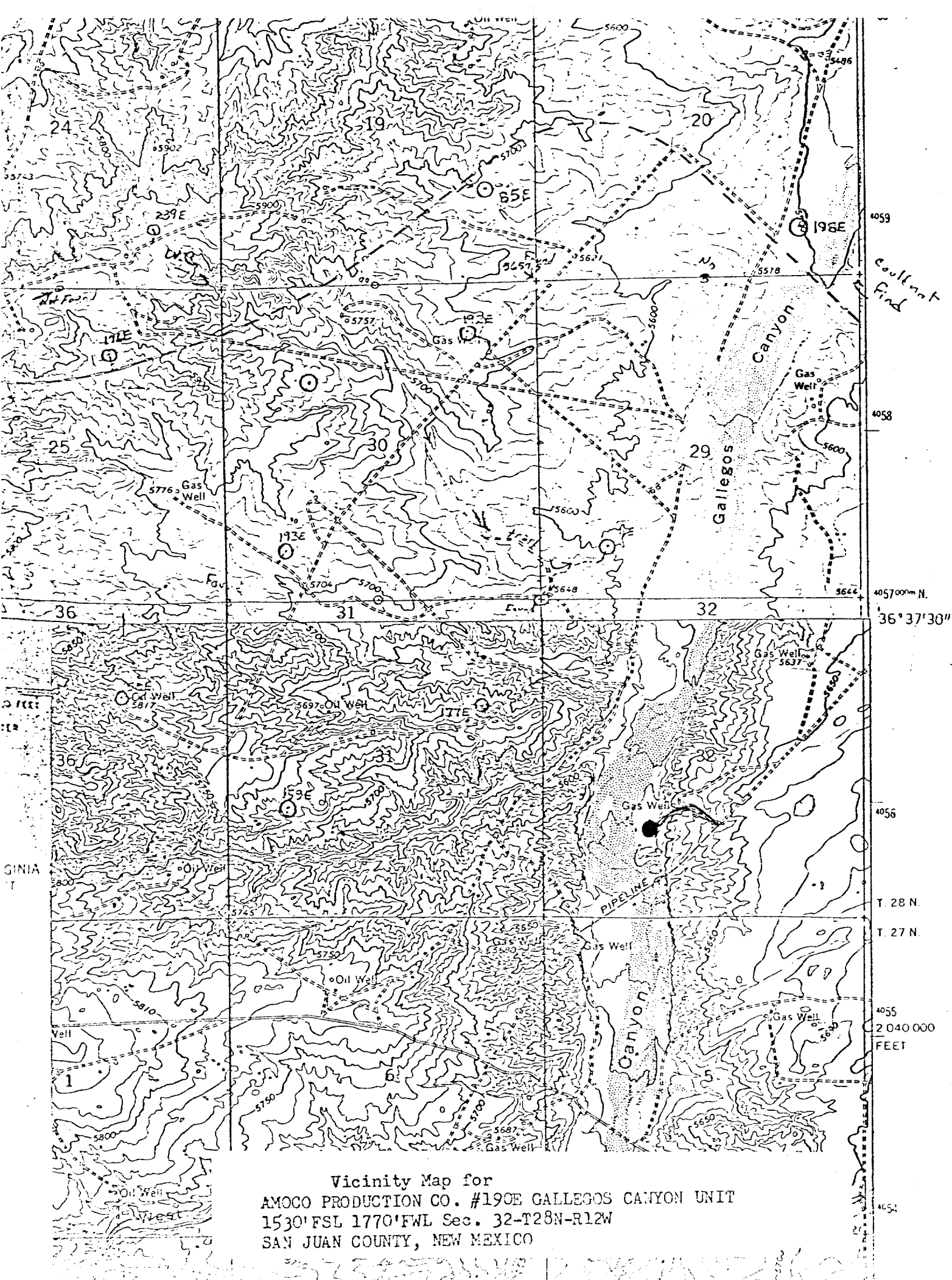
Registered Professional Engineer

and Land Surveyor

Fred B. Kerr Jr.
Fred B. Kerr Jr.

Certificate No.

3950



Vicinity Map for
 AMOCO PRODUCTION CO. #190E GALLEGOS CANYON UNIT
 1530' FSL 1770' FWL Sec. 32-T28N-R12W
 SAN JUAN COUNTY, NEW MEXICO