

UNITED STATES
DEPARTMENT OF THE INTERIOR
BUREAU OF LAND MANAGEMENT

APPLICATION FOR PERMIT TO DRILL, DEEPEN, OR PLUG BACK

1a. TYPE OF WORK

DRILL ☒

DEEPEN ☐

PLUG BACK ☐

b. TYPE OF WELL

OIL
WELL ☒

GAS
WELL ☐

OTHER

SINGLE
ZONE ☐

MULTIPLE
ZONE ☒

2. NAME OF OPERATOR

Amoco Production Company

3. ADDRESS OF OPERATOR

501 Airport Drive, Farmington, NM 87401

4. LOCATION OF WELL (Report location clearly and in accordance with any State requirements.)*

At surface

910' FNL x 790' FWL

At proposed prod. zone Same

14. DISTANCE IN MILES AND DIRECTION FROM NEAREST TOWN OR POST OFFICE*

7 miles south of Farmington, NM

15. DISTANCE FROM PROPOSED*

LOCATION TO NEAREST

PROPERTY OR LEASE LINE, FT.

(Also to nearest drilg. unit line, if any)

790'

16. NO. OF ACRES IN LEASE

43,146.62

17. NO. OF ACRES ASSIGNED

TO THIS WELL

320/80

18. DISTANCE FROM PROPOSED LOCATION*

TO NEAREST WELL, DRILLING, COMPLETED,
OR APPLIED FOR, ON THIS LEASE, FT.

900' W

19. PROPOSED DEPTH

6270'

20. ROTARY OR CABLE TOOLS

Rotary

21. ELEVATIONS (Show whether DF, RT, GR, etc.)

5990' GR

DRILLING OPERATIONS AUTHORIZED ARE
SUBJECT TO COMPLIANCE WITH ATTACHED

22. APPROX. DATE WORK WILL START*

As soon as permitted

23. PROPOSED CEMENTING PROGRAM

This action is subject to administrative
appeal pursuant to 30 CFR 290.

| SIZE OF HOLE | SIZE OF CASING | WEIGHT PER FOOT | SETTING DEPTH | QUANTITY OF CEMENT |
|--------------|----------------|-----------------|---------------|--------------------|
| 12-1/4" | 9-5/8" | 32.3#, H-40 | 300' | 354 c.f. Class B |
| 8-3/4" | 7" | 20#, K-55 | 6270' | 1420 c.f. Class B |

Amoco proposes to drill the above well to further develop the Basin Dakota and Totah Gallup Extension reservoirs. The well will be drilled to the surface casing point using native mud. The well will then be drilled to TD with a low solids nondispersed mud system. Completion design will be based on open hole logs. Copy of all logs will be filed upon completion. Amoco's standard blowout prevention will be employed; see attached drawing for blowout preventer design. Upon completion the well site will be cleaned and the reserve pit filled and leveled. The gas from this well is dedicated to El Paso Natural Gas under contract No. 56,742.

IN ABOVE SPACE DESCRIBE PROPOSED PROGRAM: If proposal is to deepen or plug back, give data on previous productive zone and proposed new productive zone. If proposal is to drill or deepen directionally, give pertinent data on subsurface locations and measured depths. Give blowout preventer program, if any.

Original Signed By

SIGNED D.D. Lawson

TITLE Dist. Admin. Supervisor

(This space for Federal or State office use)

PERMIT NO.

APPROVAL DATE

APPROVED BY

TITLE

CONDITIONS OF APPROVAL, IF ANY:

NMOCC

*See Instructions On Reverse Side

RECEIVED
MAR 18 1985
OIL CON. DIV.

| |
|---|
| APPROVED |
| DATE 2/8/85 |
| AS AMENDED |
| MAR 14 1985 |
| DATE <u>AM</u> |
| actg AREA MANAGER FARMINGTON RESOURCE AREA |

OIL CONSERVATION DIVISION

STATE OF NEW MEXICO
ENERGY AND MINERALS DEPARTMENTP. O. BOX 2088
SANTA FE, NEW MEXICO 87501Form C-107
Revised 10-1

All distances must be from the outer boundaries of the section.

| | | | | | |
|--|--|-----------------|--|------------------------------------|------------------|
| Operator AMOCO PRODUCTION COMPANY | | | Lease GALLEGOS CANYON UNIT | | Well No. 234E |
| Unit Letter D | Section 14 | Township 28N | Range 13W | County San Juan | |
| Actual Footage Location of Well: 910 feet from the North line and 790 feet from the West line | | | | | |
| Ground Level Elev. 5990 | Producing Formation Dakota & Gallup | | Pool Basin Dakota/Totah Gallup Ext. | Dedicated Acreage: 320/80 Acres | |

1. Outline the acreage dedicated to the subject well by colored pencil or hatchure marks on the plat below.
2. If more than one lease is dedicated to the well, outline each and identify the ownership thereof (both as to working interest and royalty).
3. If more than one lease of different ownership is dedicated to the well, have the interests of all owners been consolidated by communitization, unitization, force-pooling, etc?

☒ Yes ☐ No If answer is "yes," type of consolidation Unitized

If answer is "no," list the owners and tract descriptions which have actually been consolidated. (Use reverse side of this form if necessary.)

No allowable will be assigned to the well until all interests have been consolidated (by communitization, unitization, forced-pooling, or otherwise) or until a non-standard unit, eliminating such interests, has been approved by the Commission.

| | | | |
|---|--|---|--|
| 910' | | 790' | |
| 790' | | 910' | |
| Sec. | | | |
| RECEIVED MAR 18 1985 OIL CON. DIV. DIST. 3 | | RECEIVED 14 FEB 1985 OIL CON. DIV. DIST. 3 | |

Scale: 1"=1000'

CERTIFICATION

I hereby certify that the information contained herein is true and complete to the best of my knowledge and belief.

Original Signed By

D. D. Lawson

Name

D. D. Lawson

Position

Dist. Admin. Supervisor

Company

Amoco Production Company

Date

2/8/85

I hereby certify that the well location shown on this plat was plotted from field notes of actual surveys made by me or under my supervision, and that the same is true and correct to the best of my knowledge and belief.

Date Surveyed

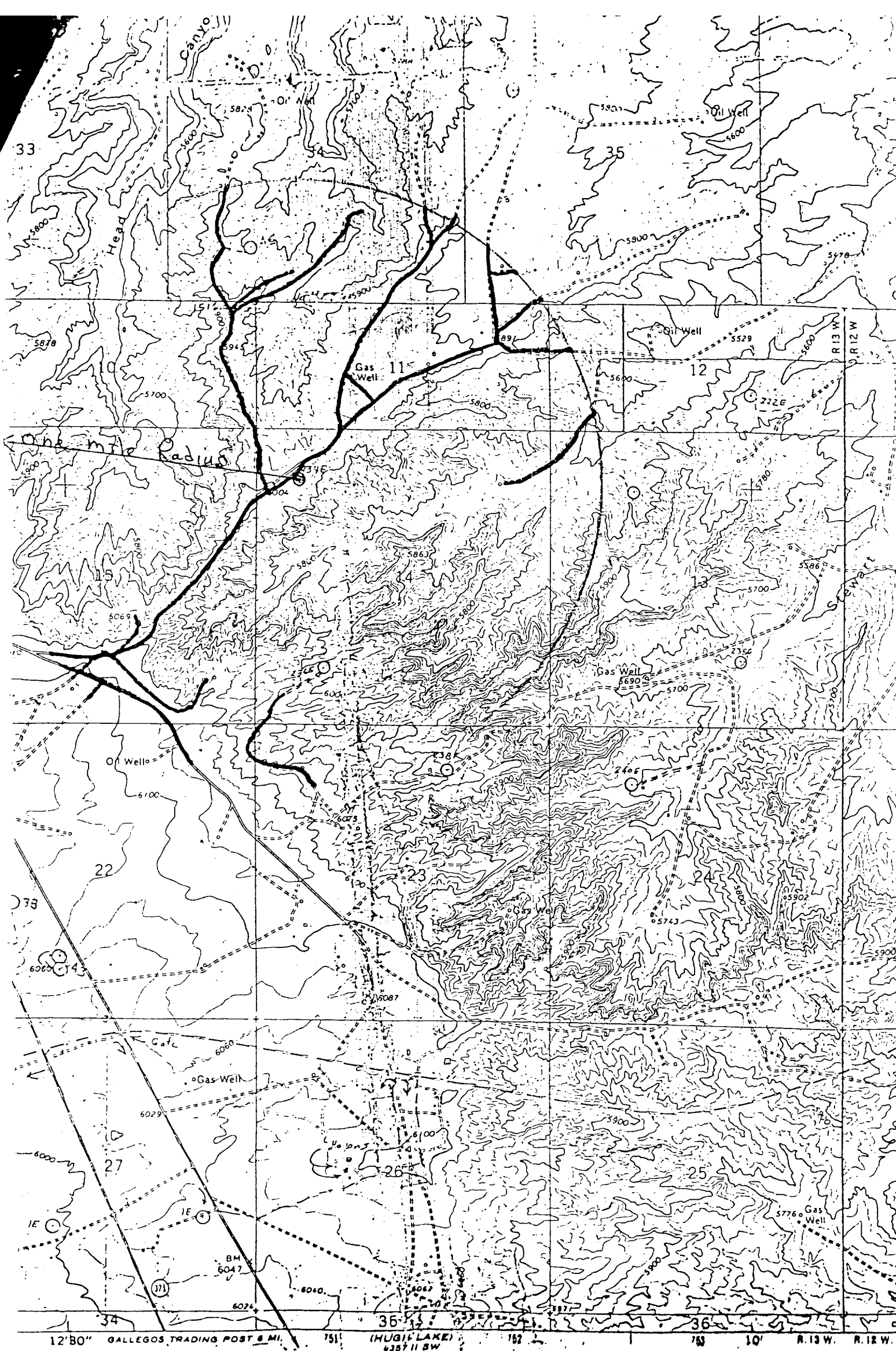
January 18, 1985

Registered Professional Engineer
and Land Surveyor

Fred B. Kerr Jr.

Certificate No.

3950



SCALE 1:24 000

Exhibit B

Vicinity Map for
 AMOCO PRODUCTION CO. #234E GALLEGOS CANYON UNIT
 910'FNL 790'FWL Sec. 14-T28N-R13W
 SAN JUAN COUNTY, NEW MEXICO

UNITED STATES REPRESENT 10-FOOT CONTOURS
 NATIONAL GEODESIC VERTICAL DATUM OF 1929