

UNITED STATES
DEPARTMENT OF THE INTERIOR
BUREAU OF LAND MANAGEMENT

APPLICATION FOR PERMIT TO DRILL, DEEPEN, OR PLUG BACK

1a. TYPE OF WORK

DRILL ☒

DEEPEN ☐

PLUG BACK ☐

b. TYPE OF WELL

OIL
WELL ☐

GAS
WELL ☒

OTHER ☐

2. NAME OF OPERATOR

Meridian Oil Inc.

3. ADDRESS OF OPERATOR

PO Box 4289, Farmington, NM 87499

4. LOCATION OF WELL (Report location clearly and in accordance with any State requirements.)*

At surface
1850'N, 845' E

At proposed prod. zone

14. DISTANCE IN MILES AND DIRECTION FROM NEAREST TOWN OR POST OFFICE*

14 miles NE of Aztec, NM

10. DISTANCE FROM PROPOSED*

LOCATION TO NEAREST
PROPERTY OR LEASE LINE, FT.
(Also to nearest drlg. unit line, if any)

18. DISTANCE FROM PROPOSED LOCATION*
TO NEAREST WELL, DRILLING, COMPLETED,
OR APPLIED FOR, ON THIS LEASE, FT.

845'

16. NO. OF ACRES IN LEASE

316.60 634 49

19. PROPOSED DEPTH

6220'

17. NO. OF ACRES ASSIGNED
TO THIS WELL

E 316.60

20. ROTARY OR CABLE TOOLS

Rotary

21. ELEVATIONS (Show whether DF, RT, GR, etc.)

6611'GL

22. APPROX. DATE WORK WILL START*

23.

PROPOSED CASING AND CEMENTING PROGRAM

SIZE OF HOLE	SIZE OF CASING	WEIGHT PER FOOT	SETTING DEPTH	QUANTITY OF CEMENT
12 1/4"	9 5/8"	32.3#	200'	125 cu.ft.circulated
8 3/4"	7"	20&23#	3810'	687 cu.ft.cover Ojo Alamo
6 1/4"	4 1/2"	10.5#	3660-6220'	447 cu.ft.circ. liner

Selectively perforate and sand water fracture the Mesa Verde formation.

A 3000 psi WP and 6000 psi test double gate preventer equipped with blind and pipe rams will be used for blow out prevention on this well.

This gas is dedicated.

The E/2 of Section 19 is dedicated to this well.

RECEIVED
OCT 13 1987
OIL CON. DIV.
DIST. 2

IN ABOVE SPACE DESCRIBE PROPOSED PROGRAM: If proposal is to deepen or plug back, give data on present productive zone and proposed new productive zone. If proposal is to drill or deepen directionally, give pertinent data on subsurface locations and measured and true vertical depths. Give blowout preventer program, if any.

24.

SIGNED

TITLE

Drilling Clerk

DATE

10-01-87

(This space for Federal or State office use)

PERMIT NO.

APPROVAL DATE

APPROVED BY

TITLE

CONDITIONS OF APPROVAL, IF ANY:

APPROVED

AS AMENDED

OCT 19 1987

AREA MANAGER

NMOCC

*See Instructions On Reverse Side

OIL CONSERVATION DIVISION

STATE OF NEW MEXICO
ENERGY AND MINERALS DEPARTMENT

P. O. BOX 2088

SANTA FE, NEW MEXICO 87501

Form C-102
Revised 10-1-78

All distances must be from the outer boundaries of the Section.

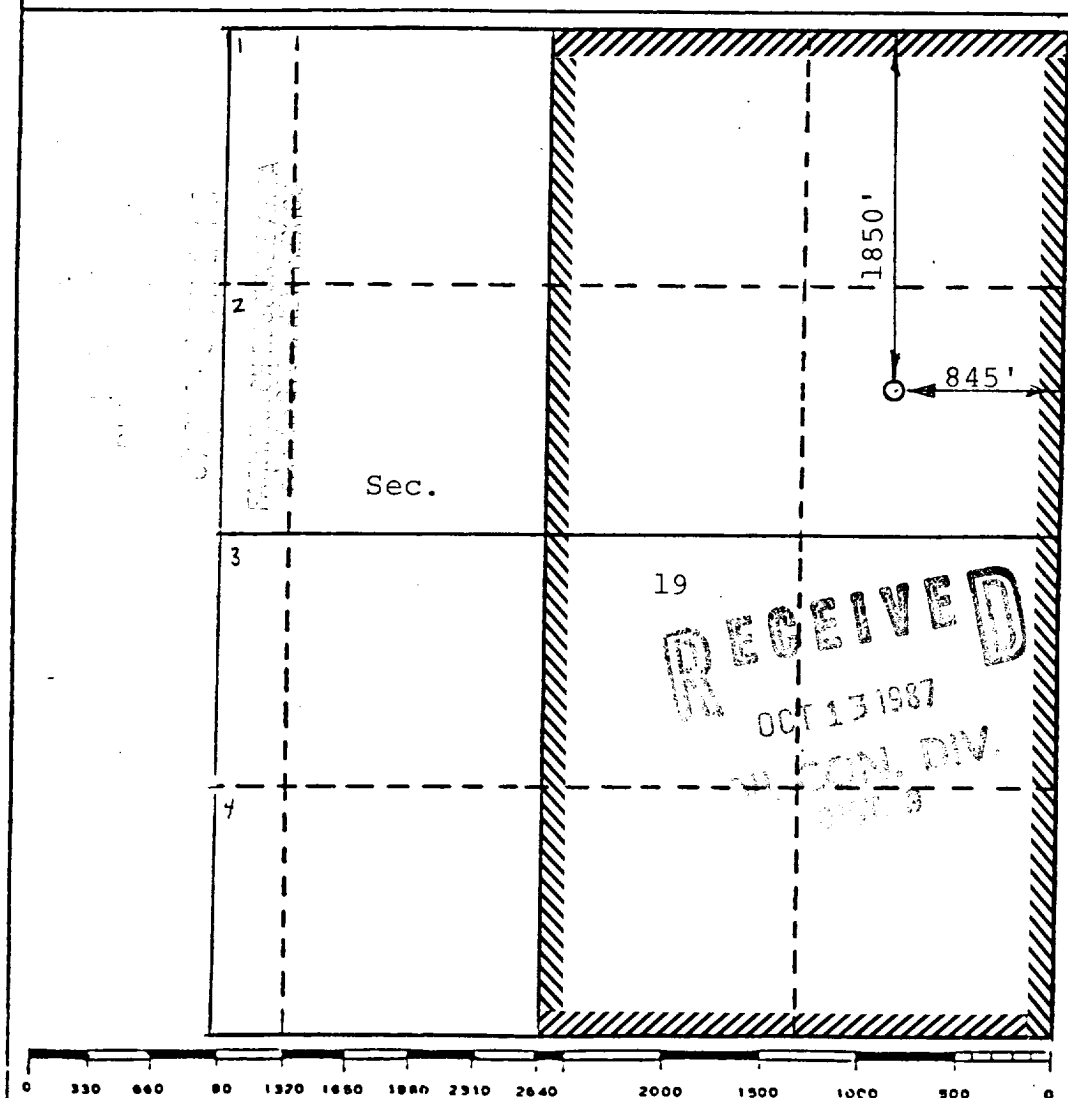
Operator Meridian Oil Inc.			Lease Newco (NM 58887)			Well No. 2A		
Unit Letter H	Section 19	Township 32N	Range 9W	County San Juan				
Actual Footage Location of Well: 1850 feet from the North line and 845 feet from the East line								
Ground Level Elev. 6611	Producing Formation Mesaverde		Pool Blanco		Dedicated Acreage: 316.60 Acres			

1. Outline the acreage dedicated to the subject well by colored pencil or hatchure marks on the plat below.
2. If more than one lease is dedicated to the well, outline each and identify the ownership thereof (both as to working interest and royalty).
3. If more than one lease of different ownership is dedicated to the well, have the interests of all owners been consolidated by communitization, unitization, force-pooling, etc?

☐ Yes ☐ No If answer is "yes," type of consolidation _____

If answer is "no," list the owners and tract descriptions which have actually been consolidated. (Use reverse side of this form if necessary.) _____

No allowable will be assigned to the well until all interests have been consolidated (by communitization, unitization, forced-pooling, or otherwise) or until a non-standard unit, eliminating such interests, has been approved by the Division.



CERTIFICATION

I hereby certify that the information contained herein is true and complete to the best of my knowledge and belief.

David M. Kelsey
Name
Drilling Clerk
Position
MERIDIAN OIL INC.
Company

Date
10-5-87

I hereby certify that the well location shown on this plat was plotted from field notes of actual surveys made by me or under my supervision, and that the same is true and correct to the best of my knowledge and belief.

March 24, 1986

Date Surveyed
David M. Kelsey

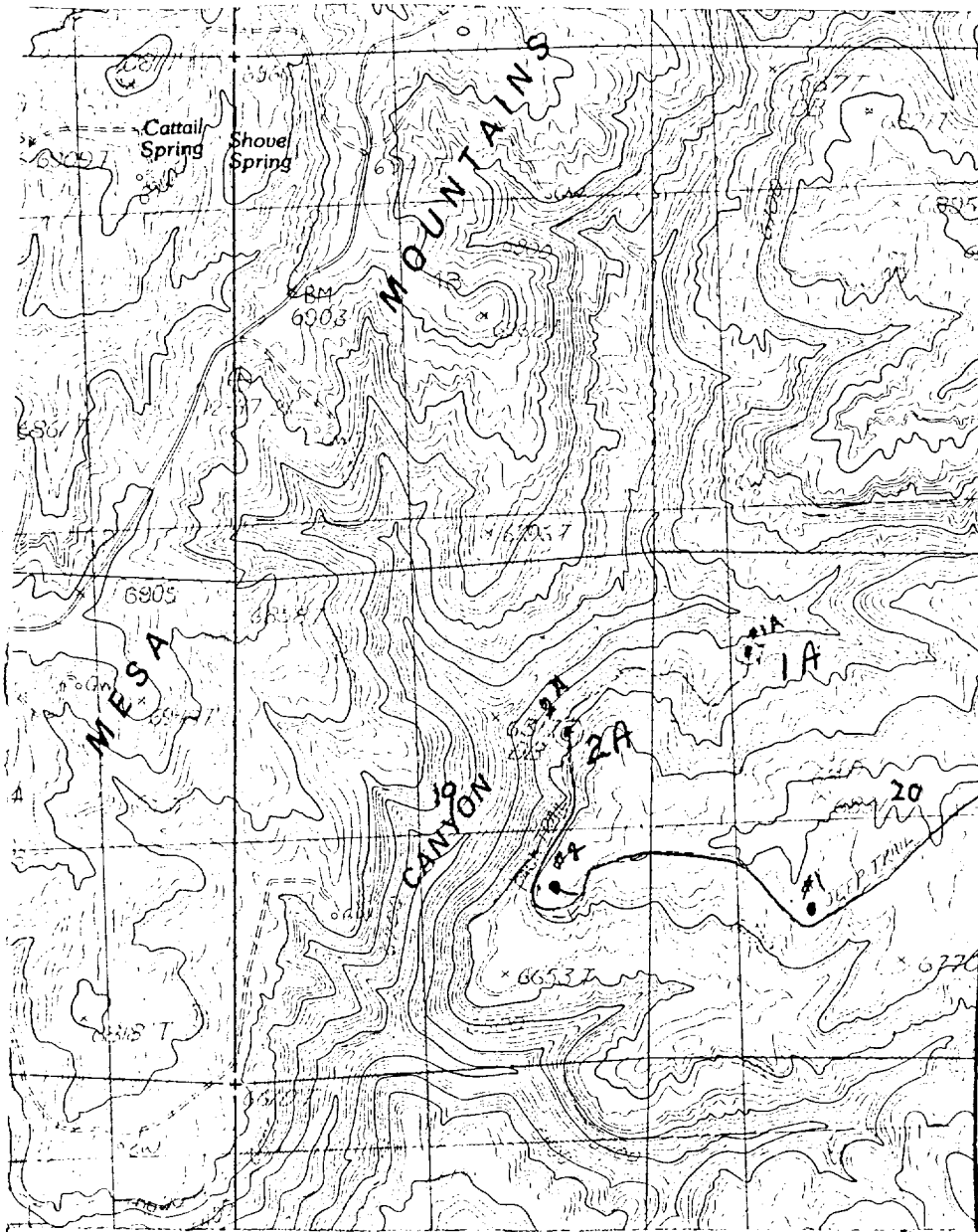
Registered Professional Engineer
and/or Land Surveyor

David M. Kelsey
Certificate No.

5855

News 27

NE 1/4-27-10



Map #2

LEGEND OF RIGHT-OF-WAYS

EXISTING ROADS

EXISTING PIPELINES

EXISTING ROAD & PIPELINE

PROPOSED ROADS

PROPOSED PIPELINES

PROPOSED ROAD & PIPELINE