

NEW MEXICO
OIL CONSERVATION COMMISSION

Gas Well Plat

Date JULY 16, 1954

W. P. Carr Operator JENSEN # 2 Lease 10 Well No.

Name of Producing Formation PICTURES CLIFF Pool ACTEC PICTURES CLIFF

No. Acres Dedicated to the Well 160

Indicate Land Ownership Status. (Federal, State, Patented)

SECTION 22 TOWNSHIP 22 N RANGE 12 E

			JAMES F. SCOTT
		JOHN Y. JENSEN AND MARY MARGARET JENSEN	AND LELA SCOTT

I hereby certify that the information given above is true and complete to the best of my knowledge.

ILLEGIBLE

Name C. R. Hout
Position W. P. Carr
Representing Supt
Address 6700 Forest Lane Dallas Tex

(over)

OIL CONSERVATION COMMISSION

AZTEC DISTRICT OFFICE

No. Copies Received 5

DISTRIBUTION

	No.	
Operator	1	
Santa Fe	1	
Operation Guide		
State Land Office		
U. S. G. S.		
Transporter		
File	1	✓

NEW MEXICO OIL CONSERVATION COMMISSION
Santa Fe, New Mexico

NOTICE OF INTENTION TO DRILL OR RECOMPLETE

Notice must be given to the District Office of the Oil Conservation Commission and approval obtained before drilling or recompleting begins. If changes in the proposed plan are considered advisable, a copy of this notice showing such changes will be returned to the sender. Submit this notice in QUINTUPPLICATE. One copy will be returned following approval. See additional instructions in Rules and Regulations of the Commission.

Aztec, New Mexico
(Place)July 19, 1954
(Date)OIL CONSERVATION COMMISSION
SANTA FE, NEW MEXICO

Gentlemen:

You are hereby notified that it is our intention to commence the (Drilling) (~~Recompletion~~) of a well to be known as

W. P. Carr

(Company or Operator)

Jensen

(Lease)

Well No. 2

in (Unit)

The well is

located 1802 feet from the North line and 1400 feet from the East line of Section 12, T. 30 N., R. 12 W., NMPM.

(GIVE LOCATION FROM SECTION LINE) Aztec Pictured Cliff Pool, San Juan County

If State Land the Oil and Gas Lease is No.

If patented land the owner is.

Address.

We propose to drill well with drilling equipment as follows: We will set surface casing with cable tools, all other drilling with rotary

The status of plugging bond is approved

Drilling Contractor Greer-Smith Drilling Corp.

315 1/2 W. Main St

Farmington, New Mexico

We intend to complete this well in the Pictured Cliff formation

formation at an approximate depth of 2000 feet.

CASING PROGRAM

We propose to use the following strings of Casing and to cement them as indicated:

Size of Hole	Size of Casing	Weight per Foot	New or Second Hand	Depth	Sacks Cement
12-5/8	8-5/8	24	New	80-150	Circulate
7-7/8	5-1/2	15.5	New	2000	50-150 sx.

If changes in the above plans become advisable we will notify you immediately.

ADDITIONAL INFORMATION (If recompleting give full details of proposed plan of work.)

We will drill thro' the Pictured Cliff formation with rotary tools. After electric logging we will set 5 1/2 casing on top producing zone. We will shoot the indicated section using 2 1/2 to 4 qts. solid Nitroglycerin per foot.

Approved.....
Except as follows:

7-2, 1954

Sincerely yours,

W. P. Carr

(Company or Operator)

By *E. R. [Signature]*

Position Supt.

Send Communications regarding well to

Name W. P. Carr

Address 6700 Forest Lane
Dallas 30, Texas

OIL CONSERVATION COMMISSION

By

Oil and Gas Inspector Dist. #3

Title

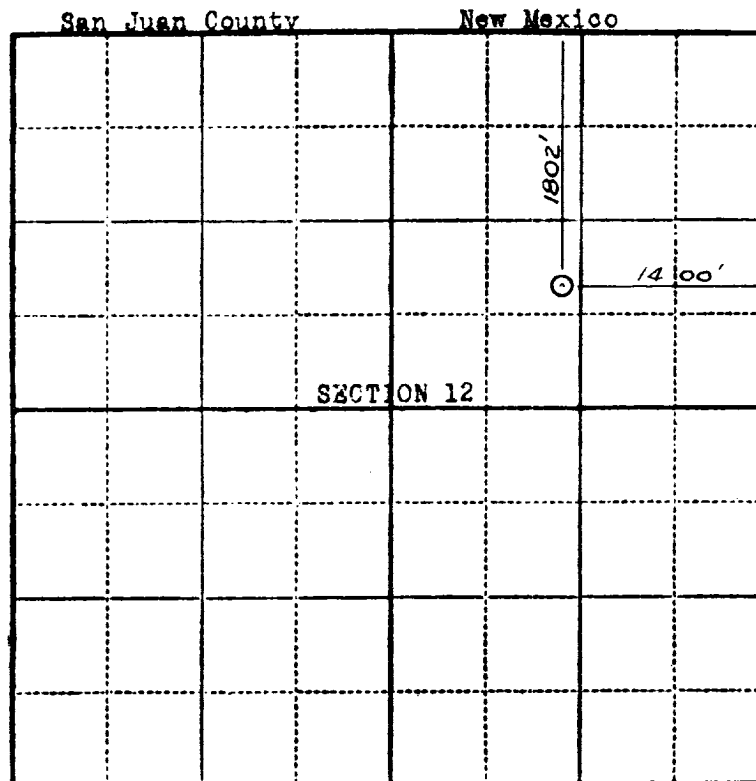
Company W. P. CARR

Lease JENSEN Well No. 2

Sec. 12 T. 30 N R. 12 W N.W.P.M.

Location 1802 feet from north line; 1400 feet
from east line.

Elevation: 5738.0 GL



Scale—4 inches equal 1 mile.

This is to certify that the above plat was prepared from field notes of actual surveys made by me or under my supervision and that the same are true and correct to the best of my knowledge and belief.

Stephen H. Kinney

STEPHEN H. KINNEY
Registered Professional
Engineer and Land Surveyor

Surveyed July 8, 19 54

Seal: