

REPUBLIC BACKHOE SERVICE LLC

Olivia Yu
NMOCD District I
1625 N. French Dr.
Hobbs. NM 88240

May 10, 2017

Dear Olivia Yu,

Subject: Spill Summary and Remediation Work Plan

Location: Read & Stevens Inc.
Shell State #3
30-025-23014 1RP-4582

Read & Stevens Inc. has contracted Republic Backhoe Service LLC to perform site assessment and remediation services at the above referenced location. The results of our spill summary and proposed remediation activities consist of the following.

Incident Date

January 22, 2017

Background Information

The Shell State #3 is located approximately twenty-one (21) miles west of Tatum, New Mexico. The legal location for the well is Unit C Section 18 Township 11 South and Range 33 East in Lea County, New Mexico. The spill site lies 730 feet east of the Shell State #3 location with the GPS Coordinates as follows: Latitude: 33.370575 North Longitude: -103.652344West. See Site Map attached in Appendix I.

Republic Backhoe Service LLC
47 E. Dickens
Lovington, NM 88260

Phone Number: (575) 631-0131

Email Ericgarcia62@hotmail.com

Watercourses in the area are dry except for infrequent flows in response to major precipitation events. The soil in this area is made up of Kimbrough-Lea loamy soil. As per the New Mexico Bureau of Geology and Minerals Resources, the local surface and shallow geology is Quaternary formations and is comprised of 5" to 24" loamy soil with hard caliche below the soil. Groundwater in the area is estimated to be at a depth of 56 feet. See Appendix II for groundwater data and Appendix III for water well map.

The ranking score for this site is 20 based on the following:

| | |
|---|----|
| Depth to ground water: 56' (50'-99') | 20 |
| Wellhead Protection Area: > 1000' | 0 |
| Distance to Surface Water Body: > 1000' | 0 |

Incident Description

On January 22, 2017 the flow line between the well and the battery burst causing a release of 14 barrels (6 oil and 8 produced water) onto the pasture. The released was discovered on January 24, 2017.

Actions Taken

Figure 1 (Appendix I) illustrates the dimensions of spill site. According to the C-141 form on January 22, 2017 the flowline from the Shell State #3 ruptured and released approx. 14 barrels (6 Oil and 8 PW) onto the ground. The released was discovered on January 24, 2017 and reported on February 1, 2017. On January 25, 2017 Republic Backhoe Service LLC began to excavate and haul the soil that was saturated with oil. As of January 31, 2017 a total of 360 yards of contaminated soil had been hauled to Gandy Marly Inc (See Appendix VII). The dimensions of the Spill Site A are 55' (North Wall) X 135' (East Wall) X 90' (South Wall) X 130' (West Wall). The release that caused Spill Site A impacted an older release Spill Site B that will be attended to as well. The majority of the contaminated soil has been excavated and hauled off the location.

Grab samples were collected utilizing a backhoe and a drilling rig. On March 29, 2017 surface samples were taken at the spill sites A and B and are summarized in Appendix

IV. On March 23, 2017 and March 24, 2017 bore hole samples were taken at the Spill Site A at a depth of 20' and Spill Site B at a depth of 10' and are summarized in Appendix V. Laboratory results from the soil sampling are summarized in the table below. All soil samples were collected by Republic Backhoe Service LLC personnel wearing clean nitrile gloves. The soil samples were placed in laboratory provided sample containers, iced and transported to Cardinal Labs in Hobbs, NM for analysis. The samples were tested for TPH using EPA method 8015M, and volatile organics (BTEX) using EPA Method 8021B. The chlorides samples were analyzed per Method SM4500C1-B.

Laboratory and Field Sample Results

| Sample ID | Date | Depth | Chlorides (PPM) | BTEX | TPH (mg/kg) GRO | TPH (mg/kg) DRO | Sample Type |
|------------------|---------|---------|-----------------|--------|-----------------|-----------------|--------------|
| North | | | | | | | |
| N-1FS | 2/10/17 | 0' | 4800 | - | - | - | Field Sample |
| N-Surface | 3/29/17 | Surface | 5040 | < .300 | 10 | 28.3 | Lab |
| N-2FS | 2/10/17 | 1' | 1604 | - | - | - | Field Sample |
| N-3FS | 2/10/17 | 2' | 360 | - | - | - | Field Sample |
| N 2 | 2/15/17 | 2' | - | < .300 | 10 | 10 | Lab Sample |
| N-4FS | 2/10/17 | 3' | 64 | - | - | - | Field Sample |
| N 2-C | 2/15/17 | 3' | 32 | - | - | - | Lab |
| N-5FS | 2/10/17 | 5' | 64 | - | - | - | Field Sample |
| N-6FS | 2/10/17 | 8' | 64 | - | - | - | Field Sample |
| N20 | 3/23/17 | 20' | 16 | < .300 | 10 | 10 | Lab |
| | | | | | | | |
| Northeast | | | | | | | |
| NE-1FS | 2/10/17 | 0' | 64 | - | - | - | Field Sample |
| NE Surface | 3/29/17 | Surface | 32 | < .300 | 10 | 10 | Lab |
| NE 0 | 2/15/17 | 0' | - | < .300 | 10 | 10 | Lab |
| NE 0-C | 2/15/17 | 0' | 32 | - | - | - | Lab |
| NE-2FS | 2/10/17 | 5' | 64 | - | - | - | Field Sample |
| NE-3FS | 2/10/17 | 8' | 64 | - | - | - | Field Sample |
| NE20 | 3/23/17 | 20' | 16 | < .300 | 10 | 10 | Lab |
| | | | | | | | |

| Sample ID | Date | Depth | Chlorides | BTEX | TPH(mg/kg) GRO | TPH(mg/kg) DRO | Sample Type |
|------------------|-----------|---------|-----------|-------|-------------------|-------------------|-----------------|
| East | | | | | | | |
| E-1FS | 2/10/17 | 0' | 5816 | - | - | - | Field Sample |
| E Surface | 3/29/17 | Surface | 6000 | .632 | 10 | 1020 | Lab |
| E-2FS | 2/10/17 | 1' | 3204 | - | - | - | Field Sample |
| E-3FS | 2/10/17 | 2' | 640 | - | - | - | Field Sample |
| E-2 | 2/15/17 | 2' | - | <.300 | 10 | 10 | Lab |
| E-4FS | 2/10/17 | 3' | 360 | - | - | - | Field Sample |
| E-5FS | 2/10/17 | 4' | 220 | - | - | - | Field Sample |
| E-6FS | 2/10/17 | 5' | 64 | - | - | - | Field Sample |
| E2-C | 2/15/17 | 5' | 16 | - | - | - | Lab |
| E-7FS | 2/10/17 | 8' | 64 | - | - | - | Field Sample |
| E20 | 3/23/17 | 20' | 16 | <.300 | 10 | 10 | Lab |
| Southeast | | | | | | | |
| SE-1FS | 2/11/17 | 0' | 320 | - | - | - | Field Sample |
| SE Surface | 3/29/2017 | Surface | 32 | .605 | 225 | 23200 | Lab |
| SE-2FS | 2/11/17 | 1' | 64 | - | - | - | Field Sample |
| SE-3FS | 2/11/17 | 2' | 64 | - | - | - | Field Sample |
| SE2 | 2/15/17 | 2' | - | <.300 | 10 | 10 | Lab |
| SE 2-C | 2/15/17 | 2' | 16 | - | - | - | Lab |
| SE-4FS | 2/11/17 | 4' | 64 | - | - | - | Field Sample |
| SE-5FS | 2/11/17 | 6' | 64 | - | - | - | Field Sample |
| SE-6FS | 2/11/17 | 8' | 64 | - | - | - | Field Sample |
| SE20 | 3/23/17 | 20' | 16 | <.300 | 10 | 10 | Lab |

| Sample ID | Date | Depth | Chlorides (PPM) | BTEX | TPH (mg/kg) GRO | TPH (mg/kg) DRO | Sample Type |
|------------------|---------|---------|-----------------|-------|-----------------|-----------------|--------------|
| South | | | | | | | |
| S-1FS | 2/11/17 | 0' | 2024 | - | - | - | Field Sample |
| S-Surface | 3/29/17 | Surface | 2240 | <.300 | 10 | 127 | Lab |
| S-2FS | 2/11/17 | 1' | 824 | - | - | - | Field Sample |
| S2 | 2/15/17 | 2' | - | <.300 | 10 | 10 | Lab |
| S-3FS | 2/11/17 | 2' | 484 | - | - | - | Field Sample |
| S-4FS | 2/11/17 | 3' | 280 | - | - | - | Field Sample |
| S-5FS | 2/11/17 | 4' | 128 | - | - | - | Field Sample |
| S-6FS | 2/11/17 | 5' | 64 | - | - | - | Field Sample |
| S2-C | 2/15/17 | 5' | 16 | - | - | - | Lab |
| S-7FS | 2/11/17 | 8' | 64 | - | - | - | Field Sample |
| S-20 | 3/23/17 | 20' | 16 | <.300 | 10 | 10 | Lab |
| | | | | | | | |
| Southwest | | | | | | | |
| SW-1FS | 2/11/17 | 0' | 2088 | - | - | - | Field Sample |
| SW-Surface | 3/29/17 | Surface | 2240 | <.300 | 10 | 127 | Lab |
| SW0 | 2/15/17 | 0' | - | <.300 | 10 | 10 | Lab |
| SW-2FS | 2/11/17 | 1' | 132 | - | - | - | Field Sample |
| SW1-C | 2/15/17 | 1' | 64 | - | - | - | Lab |
| SW-3FS | 2/11/17 | 3' | 64 | - | - | - | Field Sample |
| SW-4FS | 2/11/17 | 5' | 64 | - | - | - | Field Sample |
| SW20 | 3/23/17 | 20' | 16 | <.300 | 10 | 10 | Lab |
| | | | | | | | |

| Sample ID | Date | Depth | Chlorides (PPM) | BTEX | TPH (mng/kg) GRO | TPH (mg/kg) DRO | Type of Sample |
|------------------|---------|---------|-----------------|-------|------------------|-----------------|----------------|
| West | | | | | | | |
| W-1FS | 2/12/17 | 0' | 4424 | - | - | - | Field Sample |
| W-Surface | 3/29/17 | Surface | 5920 | 89.1 | 1520 | 10600 | Lab |
| W-2FS | 2/12/17 | 1' | 720 | - | - | - | Field Sample |
| W 2 | 2/15/17 | 2' | - | <.300 | 10 | 10 | Lab |
| W 2-C | 2/15/17 | 2' | 16 | - | - | - | Lab |
| W-3FS | 2/12/17 | 2' | 128 | - | - | - | Field Sample |
| W-4FS | 2/12/17 | 5' | 64 | - | - | - | Field Sample |
| W-20 | 3/23/17 | 20' | 16 | <.300 | 10 | 10 | Lab |
| | | | | | | | |
| Northwest | | | | | | | |
| NW-1FS | 2/12/17 | 0' | 3644 | - | - | - | Field Sample |
| NW-Surface | 3/29/17 | Surface | 2480 | .992 | 50.2 | 1570 | Lab |
| NW-2FS | 2/12/17 | 1' | 2480 | - | - | - | Field Sample |
| NW-3FS | 2/12/17 | 2' | 556 | - | - | - | Field Sample |
| NW-4FS | 2/12/17 | 3' | 336 | - | - | - | Field Sample |
| NW5-FS | 2/12/17 | 5' | 320 | - | - | - | Field Sample |
| NW 6 | 2/15/17 | 6' | - | <.300 | 10 | 10 | Lab |
| NW6-FS | 2/12/17 | 8' | 164 | - | - | - | Field Sample |
| NW9-c | 2/15/17 | 9' | 16 | - | - | - | Field Sample |
| NW7-FS | 2/12/17 | 10' | 64 | - | - | - | Field Sample |
| NW20 | 3/23/17 | 20' | 16 | <.300 | 10 | 10 | Lab |
| | | | | | | | |

| Sample ID | Date | Depth | Chlorides (PPM) | BTEX | TPH (mg/kg) GRO | TPH (mg/kg) DRO | Type of Sample |
|----------------|---------|---------|-----------------|-------|-----------------|-----------------|----------------|
| Central | | | | | | | |
| C-1FS | 2/12/17 | 0' | 9600 | - | - | - | Field Sample |
| C-Surface | 3/29/17 | Surface | 700 | 10.5 | 197 | 9200 | Lab |
| C-2FS | 2/12/17 | 1' | 4800 | - | - | - | Field Sample |
| C-3FS | 2/12/17 | 2' | 1900 | - | - | - | Field Sample |
| 2 | 1/30/17 | 2' | 2200 | - | - | - | Lab |
| 5 | 1/30/17 | 5' | 2480 | - | - | - | Lab |
| 7' | 1/30/17 | 7' | 2080 | - | - | - | Lab |
| Shell 5 | 2/1/17 | 5' | - | <.300 | 10 | 58.1 | Lab |
| Shell 6 | 2/1/17 | 6' | - | <.300 | 10 | 49.3 | Lab |
| Shell 7 | 2/1/17 | 7' | - | <.300 | 10 | 24.1 | Lab |
| C10 | 2/16/17 | 10' | - | <.300 | 10 | 10 | Lab |
| C-10FS | 2/16/17 | 10' | 212 | - | - | - | Field Sample |
| C-11FS | 2/16/17 | 15' | 64 | - | - | - | Field Sample |
| C-15 | 2/16/17 | 15' | 32 | - | - | - | Lab |
| C20 | 3/23/17 | 20' | 16 | <.300 | 10 | 10 | Lab |
| | | | | | | | |
| NS-1 | | | | | | | |
| NS1-0FS | 2/15/17 | 0' | 640 | - | - | - | Field Sample |
| NS-1 Surface | 3/29/17 | Surface | 512 | <.300 | 10 | 24.5 | Lab |
| NS1-1FS | 2/15/17 | 1' | 624 | - | - | - | Lab |
| NS1-2 | 2/15/17 | 2' | 240 | - | - | - | Field Sample |
| NS1-3 | 2/15/17 | 5' | 64 | - | - | - | Field Sample |
| NS1-10 | 3/24/17 | 10' | 16 | <.300 | 10 | 10 | Lab |
| NS-2 | | | | | | | |
| NS2-0FS | 2/15/17 | 0' | 280 | - | - | - | Field Sample |
| NS2-Surface | 3/29/17 | Surface | 32 | <.300 | 10 | 10 | Lab |
| NS2-1FS | 2/15/17 | 1' | 64 | - | - | - | Field Sample |
| NS2 | 2/15/17 | 1' | 80 | <.300 | 10 | 10 | Lab |
| NS2-2FS | 2/15/17 | 5' | 64 | - | - | - | Field Sample |
| NS2-10 | 3/24/17 | 10' | 16 | <.300 | 10 | 10 | Lab |

| Sample ID | Date | Depth | Chlorides (PPM) | BTEX | TPH (mg/kg) GRO | TPH (mg/kg) DRO | Sample Type |
|--------------|---------|---------|-----------------|-------|-----------------|-----------------|--------------|
| NS-3 | | | | | | | |
| NS3-0FS | 2/15/17 | 0' | 1224 | - | - | - | Field Sample |
| NS-Surface | 3/29/17 | Surface | 1960 | <.300 | 10 | 10 | Lab |
| NS3-1FS | 2/15/17 | 1' | 128 | - | - | - | Field Sample |
| NS3 | 2/15/17 | 1' | 46 | <.300 | 10 | 10 | Lab |
| | | | | | | | |
| NS-4 | | | | | | | |
| NS4-0FS | 2/15/17 | 0' | 880 | - | - | - | Field Sample |
| NS-4 Surface | 3/29/17 | Surface | 1180 | <.300 | 10 | 10 | Lab |
| NS4-1FS | 2/15/17 | 1' | 64 | - | - | - | Field Sample |
| NS 4 | 2/15/17 | 1' | 32 | <.300 | 10 | 10 | Lab |
| NS4-2FS | 2/15/17 | 5' | 64 | - | - | - | Field Sample |
| NS4-10 | 3/24/17 | 10' | 16 | <.300 | 10 | 10 | Lab |
| | | | | | | | |

Spill Site A-Delineation

Center

Surface contamination at the center is high (Sample ID C-S). TPH and BTEX reach vertical extent at depths of 5' and remain clean at depths of 10', and 20' (Sample ID Shell 5, C-10, and C20). Chloride contaminants reach vertical extent at depths of 10' (field sample ID C-10 212 PPM) and remain clean at depths of 15' (Sample ID C-15) and 20' (Sample ID C-20).

North

Surface TPH/BTEX contamination is below limits, but chloride contamination at the north is high (N-S). Chloride contaminants reach vertical extent at a depth of 3' (N2-C) and remain clean to a depth of 20' (N-20).

North East

Surface TPH/BTEX/Chloride contamination is below limits, and continue to be below limits to a depth of 20' (NE-20).

East

Surface contamination at the East is high (Sample ID E-S). TPH and BTEX reach vertical extent at depths of 2' (Sample ID E2) and remain clean at a depth of 20' (Sample ID E20). Chloride contaminants reach vertical extent at depths of 4' (Sample ID E2-C) and remain clean at a depth of 20' (Sample ID E-20).

South East

Surface TPH/BTEX contamination at the South East is high (Sample ID SE-S). TPH and BTEX reach vertical extent at depths of 2' (Sample ID SE2) and remain clean at a depth of 20' (Sample ID SE20). Chloride contaminants are below limits at the surface and continue to be clean at depths of 2' (Sample ID SE2-C) and remain clean at a depth of 20' (Sample ID SE-20).

South

Surface contamination at the South is high (Sample ID S-S). TPH and BTEX reach vertical extent at depths of 2' (Sample ID S2) and remain clean at a depth of 20' (Sample ID S20). Chloride contaminants reach vertical extent at depths of 5' (Sample ID S2-C) and remain clean at a depth of 20' (Sample ID E-20).

South West

Surface contamination at the South West is high (Sample ID SW-S). TPH and BTEX reach vertical extent at depths of 0' (Sample ID SW-0) and remain clean at a depth of 20' (Sample ID SW20). Chloride contaminants reach vertical extent at depths of 1' (Sample ID SW-1-C) and remain clean at a depth of 20' (Sample ID SW20).

West

Surface contamination at the West is high (Sample ID W-S). TPH and BTEX reach vertical extent at depths of 2' (Sample ID W2) and remain clean at a depth of 20'

(Sample ID W20). Chloride contaminants reach vertical extent at depths of 2' (Sample ID W2-C) and remain clean at a depth of 20' (Sample ID E-20).

North West

Surface contamination at the North West is high (Sample ID NW-S). TPH and BTEX reach vertical extent at depths of 6' (Sample ID NW6) and remain clean at a depth of 20' (Sample ID NW20). Chloride contaminants reach vertical extent at depths of 9' (Sample ID NW9-C) and remain clean at a depth of 20' (Sample ID NW-20).

Spill Site B-Delineation

NS1

Surface TPH/BTEX contamination is below limits, but chloride contamination at the NS1 is high (NS1-S). Chloride contaminants reach 1' (Sample ID NS1) and reach vertical extent at a depth of 2' (Field Sample NS1-2) and remain clean to a depth of 10' (NS1-10).

NS2

Surface TPH/BTEX/Chloride contamination is below limits remain clean to a depth of 10' (NS2-10).

NS3

Surface TPH/BTEX contamination is below limits, but chloride contamination at the NS3 is high (NS3-S). Chloride contaminants reach vertical extent at a depth of 1' (Sample ID NS3) and remain clean to a depth of 10' (NS3-10).

NS4

Surface TPH/BTEX contamination is below limits, but chloride contamination at the NS4 is high (NS4-S). Chloride contaminants reach vertical extent at a depth of 1' (Sample ID NS4) and remain clean to a depth of 10' (NS4-10).

Proposed Work Plan

We would like the approval of the New Mexico Oil Conservation Division and New Mexico State Land Office to proceed with remediation activities at the Shell State #3. We are proposing to excavate Spill A to the following depths:

| Sample ID | Depth (bgs) | 20 mil liner |
|-----------|-------------|--------------|
| North | 3' | No |
| Northeast | 0' | No |
| East | 4' | No |
| Southeast | 2' | No |
| South | 4' | No |
| Southwest | 1' | No |
| West | 2' | No |
| Northwest | 4' | Yes |
| Central | 4' | Yes |

We are proposing to excavate Spill B to the following depths:

| Sample ID | Depth (bgs) | 20 mil liner |
|-----------|-------------|--------------|
| NS1 | 2' | No |
| NS2 | 1' | No |
| NS3 | 1' | No |
| NS4 | 1' | No |

The contaminated material will be hauled to Gandy Marley Inc (an approved disposal site). Then will backfill both areas Spill Site A and B with top soil. Backfill will be hauled in from Mr. Pearce's dirt pond located at 33.3777345° N, -103.634175°W and will be mixed with top soil hauled in from location at 33.3879°N, -103.6219°W.

The mixture ratio will be two yards of top soil for every one yard of pond bottoms when backfilling in areas with depths of more than one feet. The remaining 1' will be

backfilled with 100 % top soil. For example in the Center and Northwest sample points where excavation will be 4', we will install a 20 mil liner and backfill the bottom 3' with top soil and pond bottom mixture (2:1). The remaining 1' will be back filled with top soil. In areas where the excavation depth is 1' top soil will only be used to backfill the area.

Will seed the area with an appropriate seed mixture.

Revegetation and Noxious Weed Management Plans

Seed Mixture: Warm Season SSR Grass Seed Mix 350 (See Appendix IX)

Seeding Rate/ acre: 20 lbs/acre

Timing of Dispersal: Mid to late May 2017

Method of Dispersal: First, the area will be disc. Second, the seed will be mechanically broadcasted. Third, will run the disc over the area to cover the seed. Finally, to best ensure seed germination success the area will be watered after seeding. Photos will be taken of the seed mixture bags, and of all seeding activities.

Follow up Monitoring Plan: We intend to monitor the area in late summer (before the fall season). We will evaluate the growth of the area to determine if reseeding will be necessary the following spring. We will also monitor for the area for noxious weeds. The area is small enough to rid the weeds mechanically.

Noxious Weeds Control

Republic Backhoe Service LLC takes noxious weed control very serious. All equipment and trucks are inspected before entering the pasture area. For examples truck tires are inspected for seeds between the thread of the tires, and equipment (disc harrow and backhoe) is cleaned off before entering the site. The area will be monitored for the following noxious weeds (but not limited to):

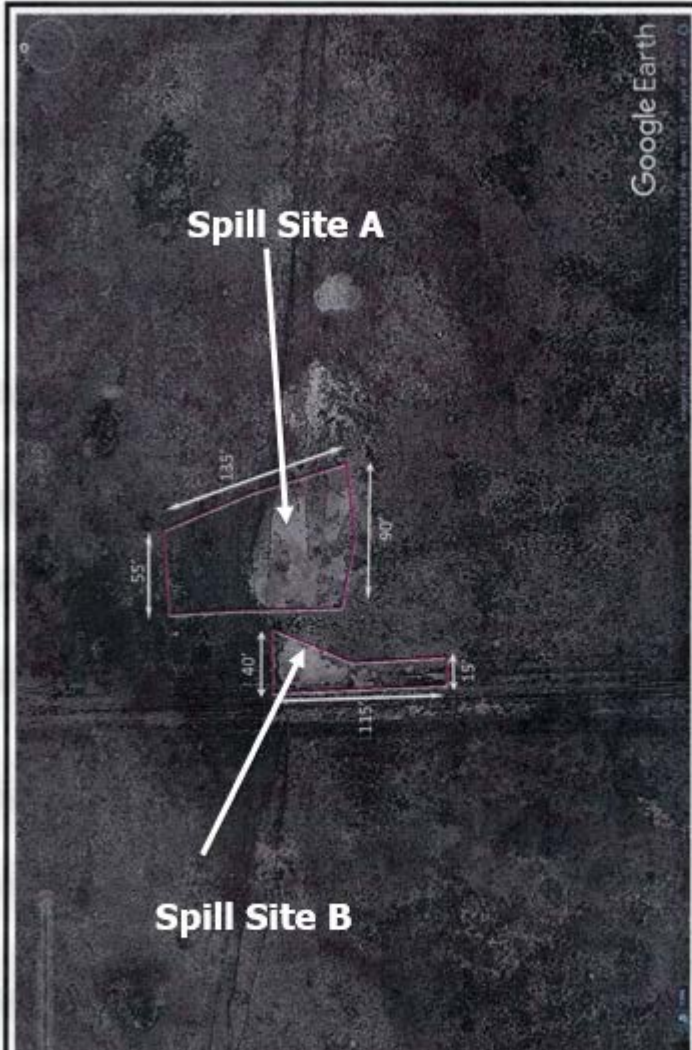
- Jointed Goatgrass
- Hoary Cress
- Cheat Grass
- African Rue
- Yellow Starthistle
- Malta Starthistle
- Purple Starthistle
- Common Teasel
- Camelthorn
- Russian Knapweed

IF you have any questions please call (575) 631-1031.

Eric Garcia
Republic Backhoe Services LLC

Appendix I

Site Map



| | | |
|--|--|------------------------------|
| <p>Stevens Inc. Site #3 Flowline Leak County, New Mexico 332N, 103.653313W</p> | <p>Republic Backhoe Service LLC. 47 E. Dickens Rd Lovington, NM 88260 (575) 631-0131</p> | <p>Figure 1 Site Map</p> |
|--|--|------------------------------|

Appendix II

Ground Water Data



New Mexico Office of the State Engineer

C=the file is closed)
(quarters are 1=NW 2=NE 3=SW 4=SE)
(quarters are smallest to largest) (NAD83 UTM in meters)

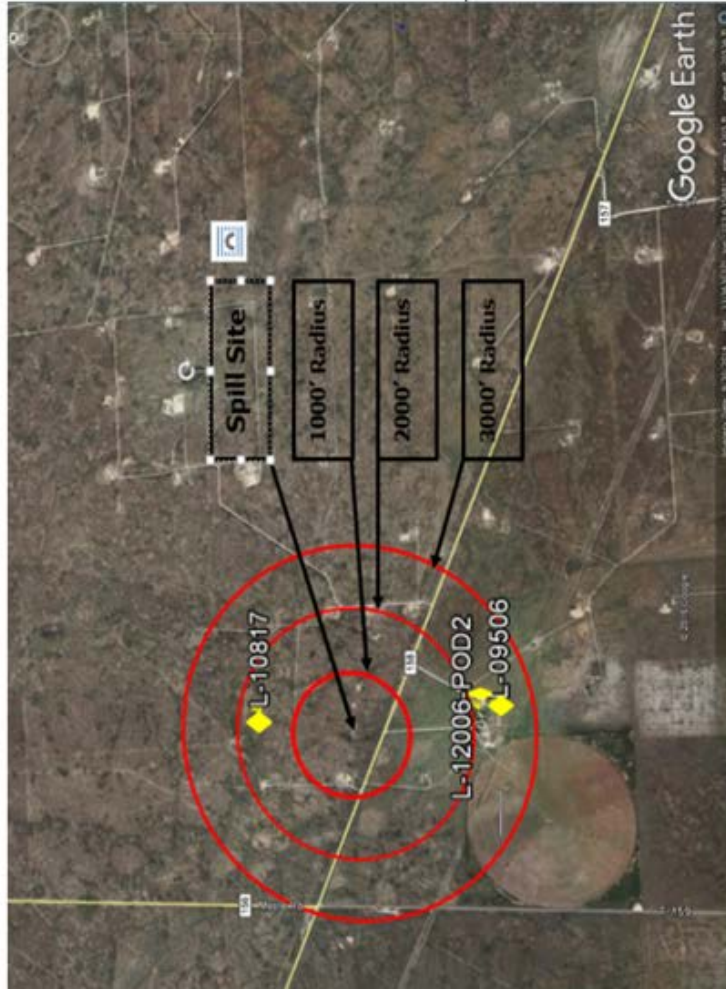
UTMNAD83 Radius Search (in meters):

Radius: 2000

The data is furnished by the NANOSE-ISC and is accepted by the recipient with the expressed understanding that the OSE-ISC makes no warranty, expressed or implied, concerning the accuracy, completeness, reliability, usability, or suitability for any particular purpose of the data.

WATER COLUMN/ AVERAGE DEPTH TO WATER

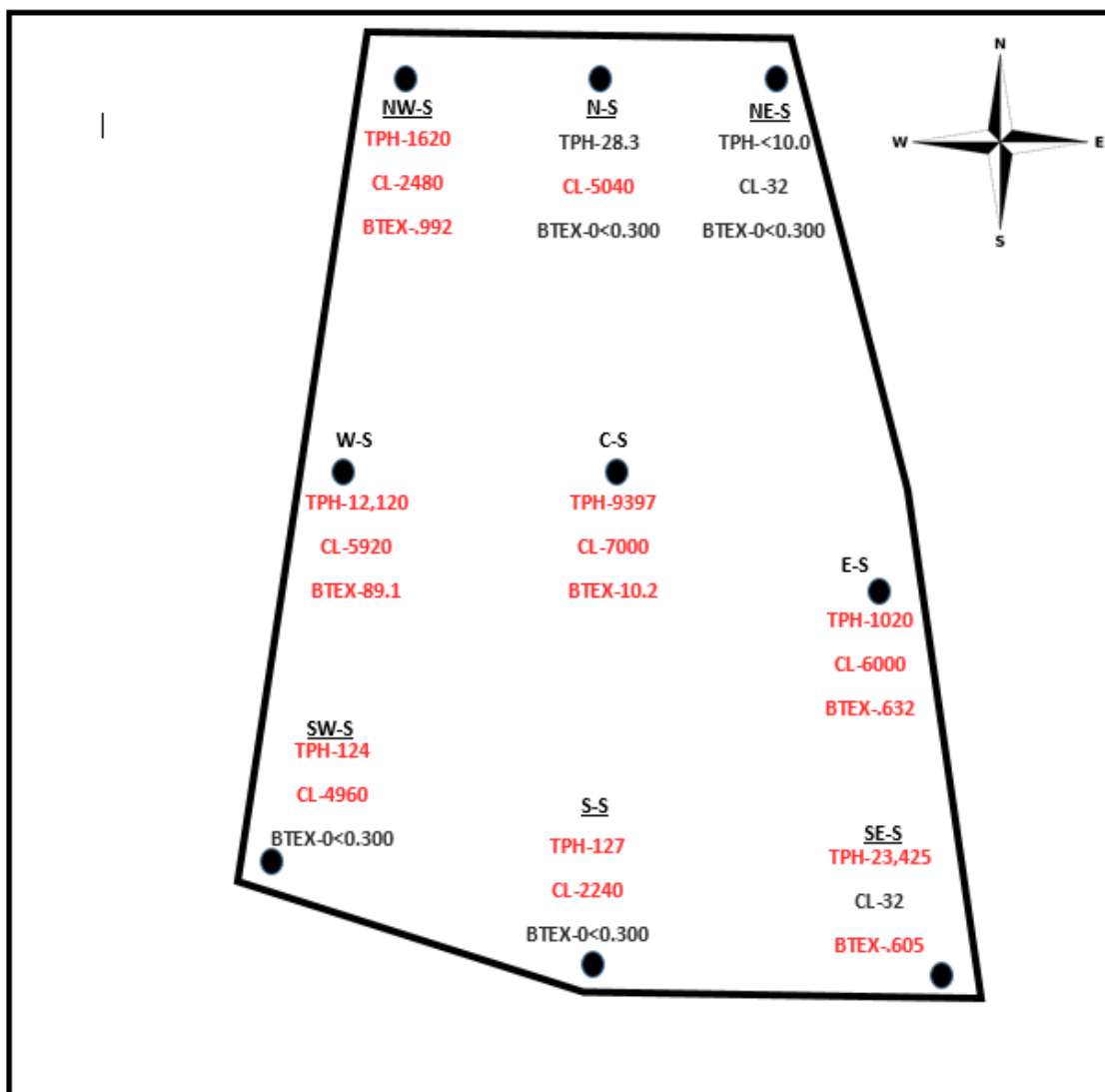
Appendix III
Water Wells Map



| | | |
|--|---|---|
| | <p>Republic Backhoe Service LLC. 47 E. Dickens Rd Lovington, NM 88260 (575) 631-0131</p> | <p>Annexix TV</p> <p>Locations of Water Wells</p> <p>L-10817</p> <p>L-12006 POD2</p> <p>L-09506</p> |
|--|---|---|

Appendix IV
Surface Samples/Results





Read & Stevens Inc.

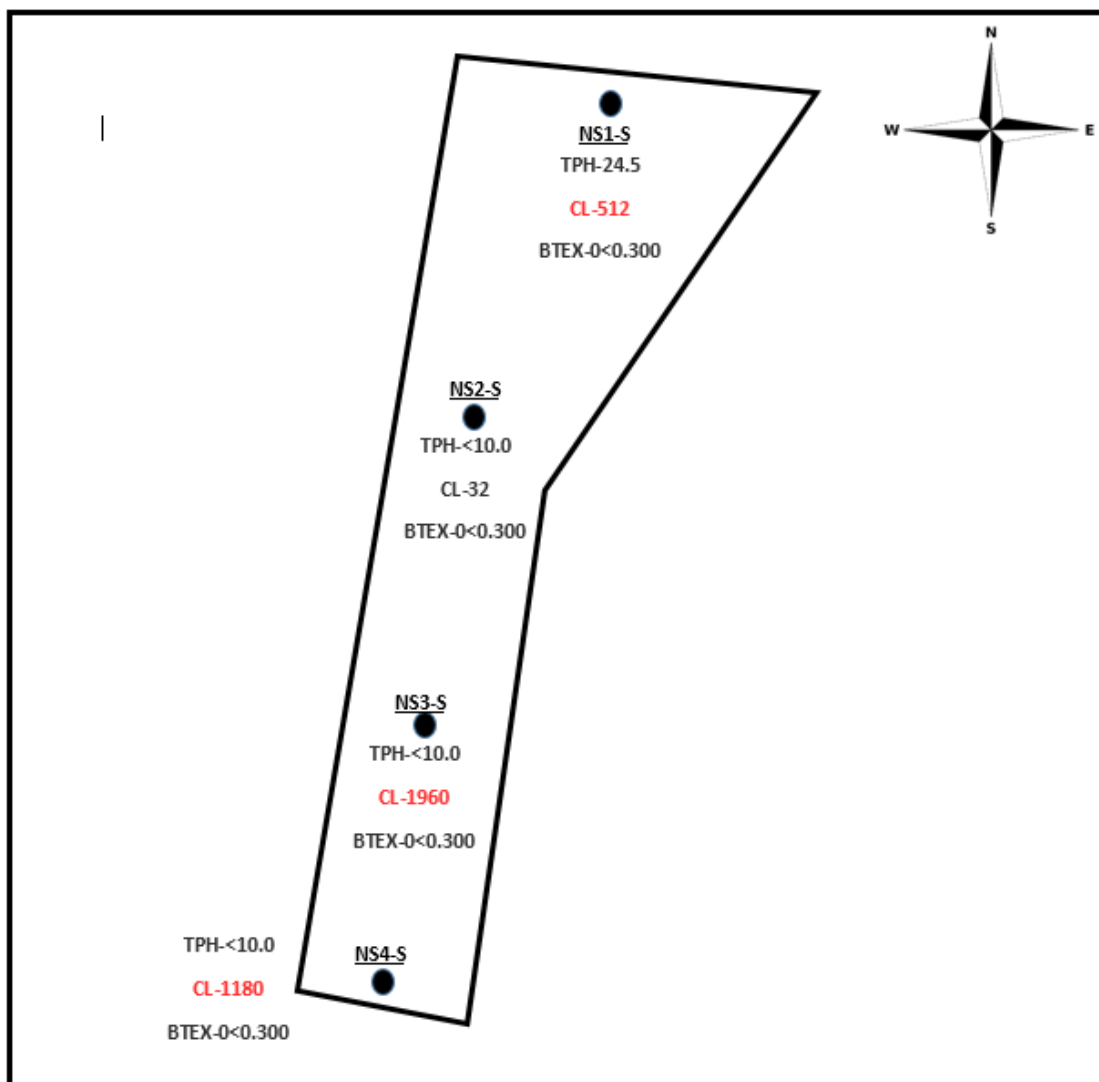
Shell State #3-Spill A
Lea County, New Mexico
33.370932N, -103.653313W

**Republic Backhoe
Service LLC.**

47 E. Dickens Rd
Lovington, NM 88260
(575) 631-0131

Surface Samples

3/29/2017



Read & Stevens Inc.

Shell State #3-Spill B
Lea County, New Mexico
33.370932N, -103.653313W

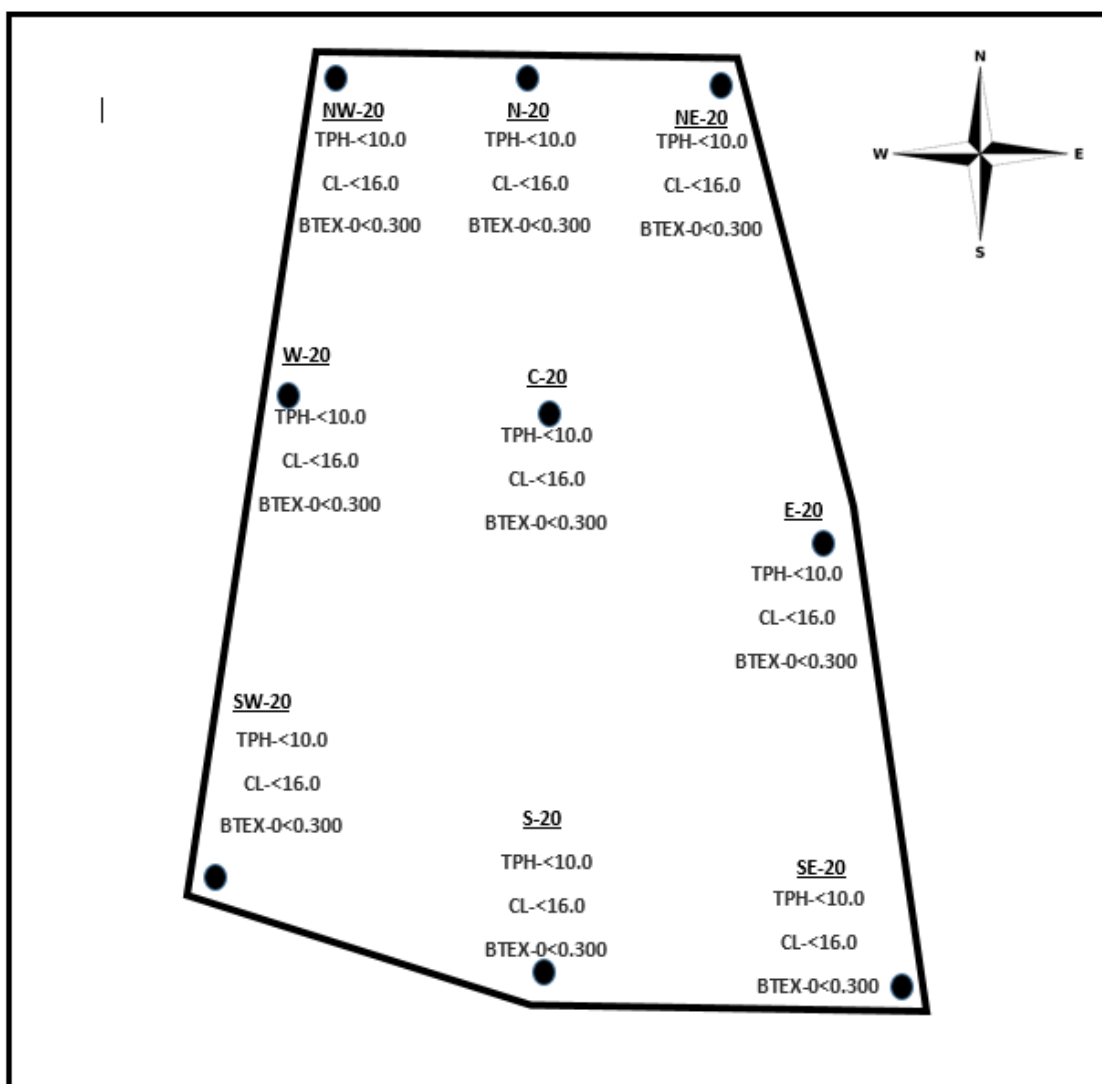
**Republic Backhoe
Service LLC.**

47 E. Dickens Rd
Lovington, NM 88260
(575) 631-0131

Surface Samples

3/29/2017

Appendix V
Bore Hole Samples/Results



Read & Stevens Inc.

Shell State #3-Spill A
Lea County, New Mexico
33.370932N, -103.653313W

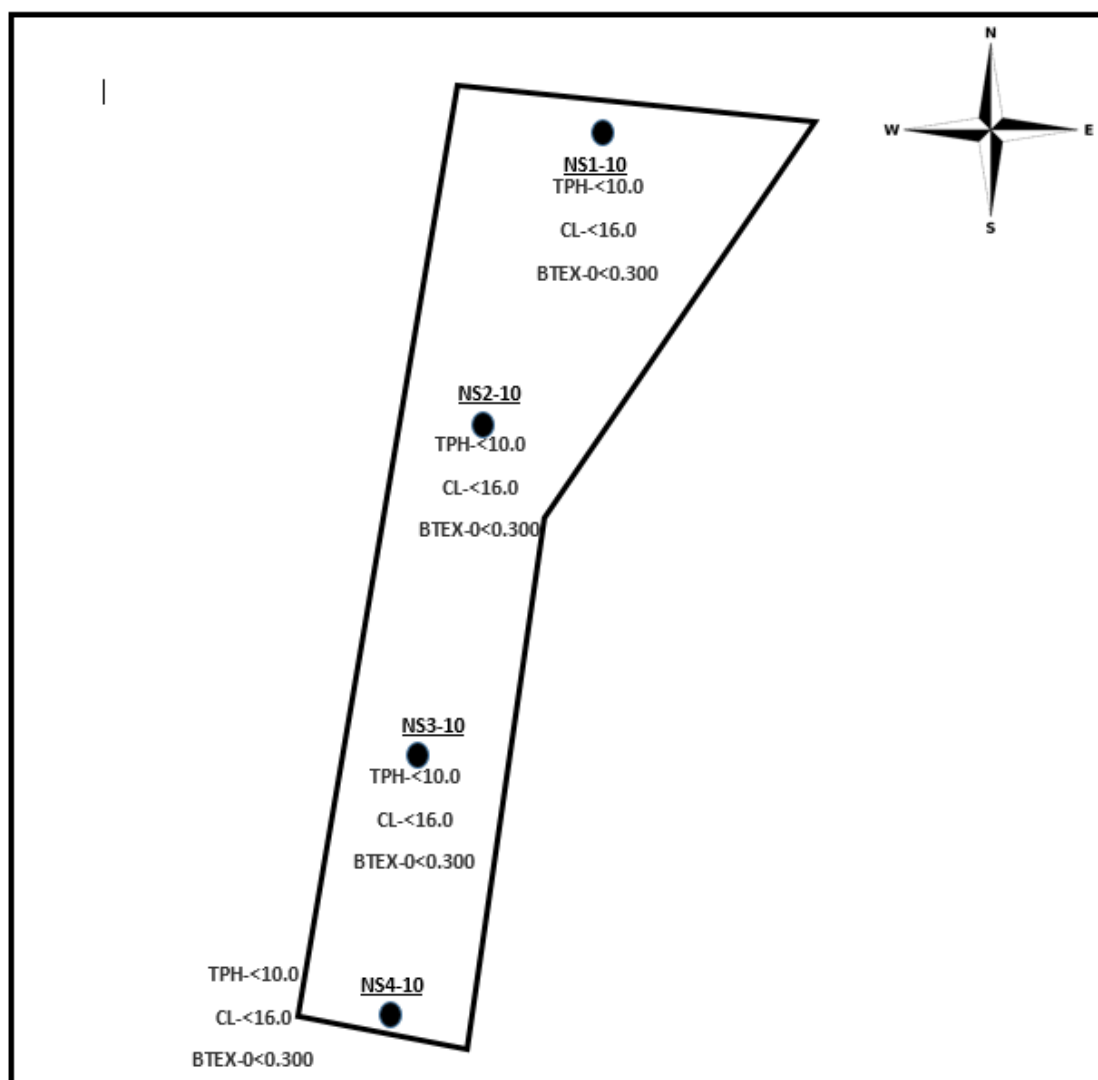
**Republic Backhoe
Service LLC.**

47 E. Dickens Rd
Lovington, NM 88260
(575) 631-0131

Bore Hole Samples

Depth of 20'

3/23/2017



Read & Stevens Inc.

Shell State #3-Spill B
Lea County, New Mexico
33.370932N, -103.653313W

**Republic Backhoe
Service LLC.**

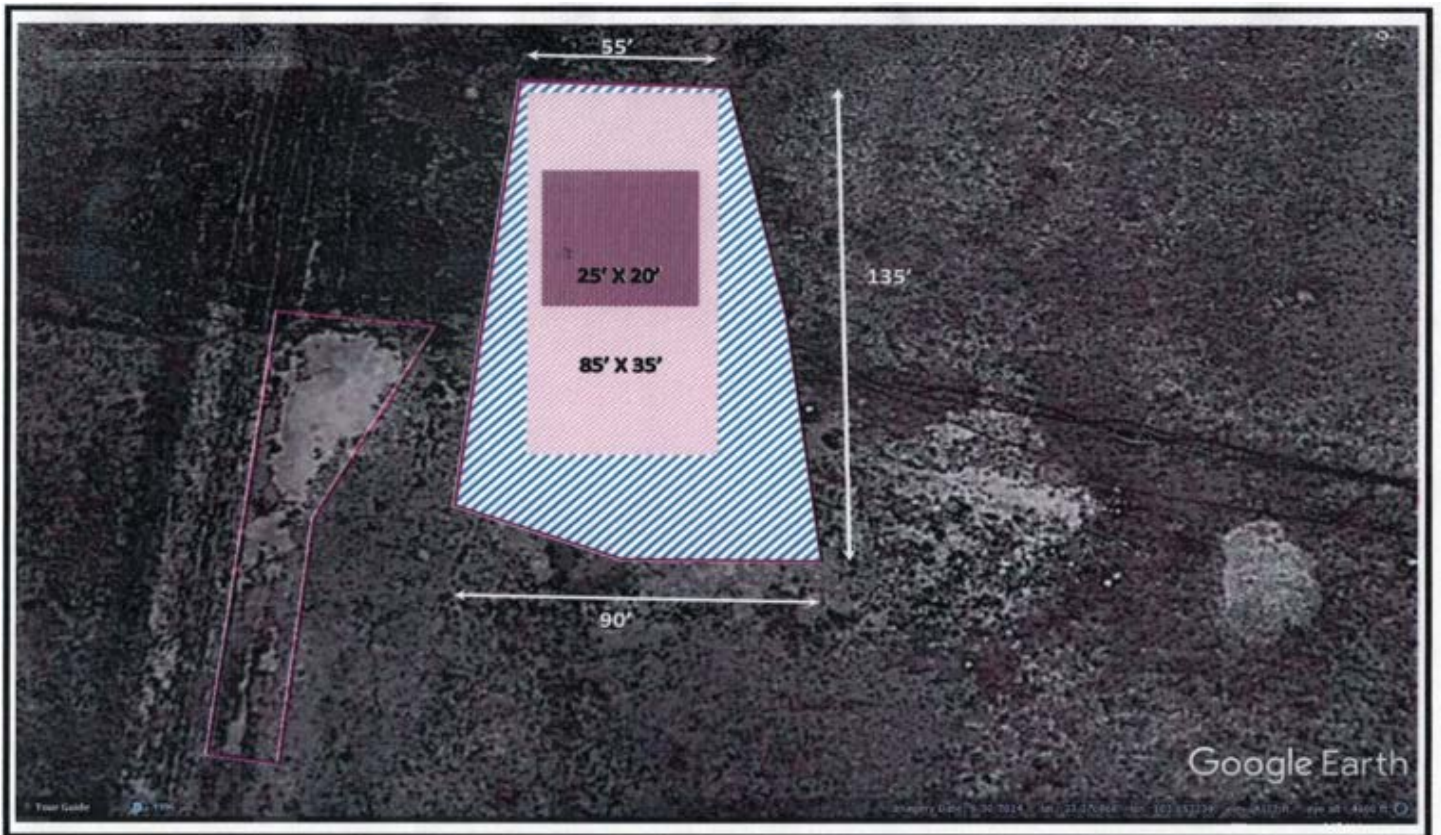
47 E. Dickens Rd
Lovington, NM 88260
(575) 631-0131

Bore Hole Samples

Depth of 10'

3/23/2017

Appendix VI
Site Excavation



Read & Stevens Inc.

Shell State #3 Flowline Leak

Lea County, New Mexico

33.370932N, 103.653313W

**Republic Backhoe
Service LLC.**

47 E. Dickens Rd

Lovington, NM 88260

(575) 631-0131

**Figure 2
Excavation Map**

Boundary Line

Extent of Excavation (1' Deep)
Extent of Excavation (2' Deep)
Extent of Excavation (3' Deep)

Appendix VIII
C-141

District I
1625 N. French Dr., Hobbs, NM 88240
District II
811 S. First St., Artesia, NM 88210
District III
1000 Rio Brazos Road, Aztec, NM 87410
District IV
1220 S. St. Francis Dr., Santa Fe, NM 87505

State of New Mexico
Energy Minerals and Natural Resources

Oil Conservation Division
1220 South St. Francis Dr.
Santa Fe, NM 87505

Form C-141
Revised August 8, 2011

Submit 1 Copy to appropriate District Office in
accordance with 19.15.29 NMAC.

Release Notification and Corrective Action

OPERATOR

☒ Initial Report ☐ Final Report

| | | | |
|-----------------|---------------------------------|---------------|-------------------|
| Name of Company | Read and Stevens Inc. | Contact | Joe Tovar |
| Address | P.O. Box 1518 Roswell, Nm 88202 | Telephone No. | (575) 390-2425 |
| Facility Name | Shell State #3 | Facility Type | Oil Well/Flowline |
| Surface Owner | State | Mineral Owner | State |
| | | API No. | 3002523014 |

LOCATION OF RELEASE

| | | | | | | | | |
|-------------|---------|----------|-------|---------------|------------------|---------------|----------------|--------|
| Unit Letter | Section | Township | Range | Feet from the | North/South Line | Feet from the | East/West Line | County |
| C | 18 | 11S | 33E | 660 | FNL | 2097 | FWL | LEA |

Latitude 33.371284 Longitude -103.655661

NATURE OF RELEASE

| | | | | | |
|-----------------------------|---|---|------------|----------------------------|---------------|
| Type of Release | Oil and Produced Water | Volume of Release | 6 Oil & PW | Volume Recovered | 0 |
| Source of Release | Flowline Leak | Date and Hour of Occurrence | 1/22/17 | Date and Hour of Discovery | 1/24/17 @ 4PM |
| Was Immediate Notice Given? | <input type="checkbox"/> Yes <input checked="" type="checkbox"/> No <input type="checkbox"/> Not Required | If YES, To Whom? | No | | |
| By Whom? | N/A | Date and Hour | N/A | | |
| Was a Watercourse Reached? | <input type="checkbox"/> Yes <input checked="" type="checkbox"/> No | If YES, Volume Impacting the Watercourse. | N/A | | |

If a Watercourse was Impacted, Describe Fully.*

N/A

Describe Cause of Problem and Remedial Action Taken.*

The contract pumper noticed the flowline leak approx 730' east of the pump jack. He then turned off and shut in the well. A crew was called out to the site and repaired the ruptured flowline.

Describe Area Affected and Cleanup Action Taken.*

The area that was affected measures approx. 100' X 100'. Clean up began the day after the spill was discovered (1-25-17). A backhoe and belly dump began to excavate and haul off contaminated soil from the affected area to Gandy Marley. As of 2-1-17 a total of 380 yards had been hauled off to Gandy-Marley Inc. Also, began to delineate the spill site, and samples were taken to Cardinal Labs on 1-31-2017.

I hereby certify that the information given above is true and complete to the best of my knowledge and understand that pursuant to NMOCD rules and regulations all operators are required to report and/or file certain release notifications and perform corrective actions for releases which may endanger public health or the environment. The acceptance of a C-141 report by the NMOCD marked as "Final Report" does not relieve the operator of liability should their operations have failed to adequately investigate and remediate contamination that pose a threat to ground water, surface water, human health or the environment. In addition, NMOCD acceptance of a C-141 report does not relieve the operator of responsibility for compliance with any other federal, state, or local laws and/or regulations.

| | | | |
|-----------------|-------------------------------|-----------------------------------|-------------------------|
| Signature: | <u>Joe Tovar</u> | | |
| Printed Name: | JOE TOVAR | | |
| Title: | MANAGER Production Operations | | |
| E-mail Address: | jtovar@readstevens.com | | Conditions of Approval: |
| Date: | 2-1-2017 | Phone: | 575-390-2425 |
| | | Approval Date: | Expiration Date: |
| | | Attached <input type="checkbox"/> | |

* Attach Additional Sheets If Necessary

Appendix IX

Seed Mixture

Bamert Seed Company Inc.

1897 CR 1818 Muleshoe, TX 79347

(800) 262-9892

Permit # TX00905

Warm Season SSR Grass Seed Mix 350 Bulk in 25# bags

Sales # SO-60263

| Description | Pure Seed | Germ | Dormant | Hard Seed | Origin |
|--|----------------------|------------------------|------------------|-----------|--------|
| Bluestem, Little "Cimarron" (Schizachyrium scoparium) | 4.32% | 82.00% | 14.00% | 0.00% | TX |
| Bluestem, Yellow "WW Spar" (Andropogon ischaemum) | 7.22% | 90.00% | 5.00% | 0.00% | |
| Buffalograss, "Texoka" Primed KNO3 (Bouteloua dactyloides) | 5.86% | 96.00% | 0.00% | 0.00% | TX |
| Dropseed, Sand (Sporobolus cryptandrus) | 5.49% | 31.00% | 63.00% | 0.00% | |
| Fescue, Tall "KY 31" (Festuca arundinacea Schreb.) | 1.98% | 85.00% | 0.00% | 0.00% | OR |
| Gramma, Blue (Bouteloua gracilis) | 19.49% | 94.00% | 0.00% | 0.00% | NM |
| Gramma, Sideoats (Bouteloua curtipendula) | 22.06% | 46.00% | 39.00% | 0.00% | KS |
| Kleingrass, "Selection 75" (Panicum coloratum) | 7.82% | 95.00% | 0.00% | 0.00% | TX |
| Switchgrass, "Blackwell" (Panicum virgatum) | 7.82% | 21.00% | 72.00% | 0.00% | TX |
| Purity: 82.07% | Inert Matter: 17.76% | Other Crop Seed: 0.09% | Weed Seed: 0.09% | | |

Appendix X
Cardinal Lab Results



PHONE (575) 393-2326 • 101 E. MARLAND • HOBBS, NM 88240

February 03, 2017

JOE TOVAR
READ & STEVENS
P.O. BOX 1719
LOVINGTON, NM 88260

RE: SHELL STATE

Enclosed are the results of analyses for samples received by the laboratory on 02/02/17 14:46.

Cardinal Laboratories is accredited through Texas NELAP under certificate number T104704398-16-8. Accreditation applies to drinking water, non-potable water and solid and chemical materials. All accredited analytes are denoted by an asterisk (*). For a complete list of accredited analytes and matrices visit the TCEQ website at www.tceq.texas.gov/field/qa/lab_accr_cred_certif.html.

Cardinal Laboratories is accredited through the State of Colorado Department of Public Health and Environment for:

| | |
|------------------|------------------------------|
| Method EPA 552.2 | Haloacetic Acids (HAA-5) |
| Method EPA 524.2 | Total Trihalomethanes (TTHM) |
| Method EPA 524.4 | Regulated VOCs (V1, V2, V3) |

Accreditation applies to public drinking water matrices.

This report meets NELAP requirements and is made up of a cover page, analytical results, and a copy of the original chain-of-custody. If you have any questions concerning this report, please feel free to contact me.

Sincerely,

Celely D. Keene
Lab Director/Quality Manager



PHONE (575) 393-2326 • 101 E. MARLAND • HOBBS, NM 88240

Analytical Results For:

READ & STEVENS
JOE TOVAR
P.O. BOX 1719
LOVINGTON NM, 88260
Fax To: not given

Received: 02/02/2017
Reported: 02/03/2017
Project Name: SHELL STATE
Project Number: NONE GIVEN
Project Location: SHELL #3

Sampling Date: 02/01/2017
Sampling Type: Soil
Sampling Condition: Cool & Intact
Sample Received By: Jodi Henson

Sample ID: SHELL 6 (H700253-01)

| BTEX 8021B | | mg/kg | | Analyzed By: MS | | | | | |
|----------------|--------|-----------------|------------|-----------------|------|------------|---------------|-------|-----------|
| Analyte | Result | Reporting Limit | Analyzed | Method Blank | BS | % Recovery | True Value QC | RPD | Qualifier |
| Benzene* | <0.050 | 0.050 | 02/03/2017 | ND | 2.19 | 109 | 2.00 | 0.644 | |
| Toluene* | 0.051 | 0.050 | 02/03/2017 | ND | 2.15 | 107 | 2.00 | 0.651 | |
| Ethylbenzene* | <0.050 | 0.050 | 02/03/2017 | ND | 2.15 | 107 | 2.00 | 0.687 | |
| Total Xylenes* | <0.150 | 0.150 | 02/03/2017 | ND | 6.07 | 101 | 6.00 | 0.556 | |
| Total BTEX | <0.300 | 0.300 | 02/03/2017 | ND | | | | | |

Surrogate: 4-Bromofluorobenzene (PID) 103 % 73.6-140

| TPH 8015M | | mg/kg | | Analyzed By: MS | | | | | | |
|--------------|--------|-----------------|------------|-----------------|-----|------------|---------------|------|-----------|--|
| Analyte | Result | Reporting Limit | Analyzed | Method Blank | BS | % Recovery | True Value QC | RPD | Qualifier | |
| GRO C6-C10 | <10.0 | 10.0 | 02/02/2017 | ND | 192 | 96.0 | 200 | 10.2 | | |
| DRO >C10-C28 | 49.3 | 10.0 | 02/02/2017 | ND | 204 | 102 | 200 | 9.69 | | |

Surrogate: 1-Chlorooctane 96.5 % 33-147

Surrogate: 1-Chlorooctadecane 107 % 28-171

Cardinal Laboratories

*=Accredited Analyte

PLEASE NOTE: Liability and Damages. Cardinal's liability and client's exclusive remedy for any claim arising, whether based in contract or tort, shall be limited to the amount paid by client for analyses. All claims, including those for negligence and any other cause whatsoever shall be deemed waived unless made in writing and received by Cardinal within thirty (30) days after completion of the applicable service. In no event shall Cardinal be liable for incidental or consequential damages, including, without limitation, business interruptions, loss of use, or loss of profits incurred by client, its subsidiaries, affiliates or successors arising out of or related to the performance of the services hereunder by Cardinal, regardless of whether such claim is based upon any of the above stated reasons or otherwise. Results relate only to the samples identified above. This report shall not be reproduced except in full with written approval of Cardinal Laboratories.

Celey D. Keene, Lab Director/Quality Manager



PHONE (575) 393-2326 • 101 E. MARLAND • HOBBS, NM 88240

Analytical Results For:

READ & STEVENS
JOE TOVAR
P.O. BOX 1719
LOVINGTON NM, 88260
Fax To: not given

| | | | |
|-------------------|-------------|---------------------|---------------|
| Received: | 02/02/2017 | Sampling Date: | 02/01/2017 |
| Reported: | 02/03/2017 | Sampling Type: | Soil |
| Project Name: | SHELL STATE | Sampling Condition: | Cool & Intact |
| Project Number: | NONE GIVEN | Sample Received By: | Jodi Henson |
| Project Location: | SHELL #3 | | |

Sample ID: SHELL 7 (H700253-02)

| BTEX 80218 | | mg/kg | | Analyzed By: MS | | | | | | |
|----------------|--------|-----------------|------------|-----------------|------|------------|---------------|-------|-----------|--|
| Analyte | Result | Reporting Limit | Analyzed | Method Blank | BS | % Recovery | True Value QC | RPD | Qualifier | |
| Benzene* | <0.050 | 0.050 | 02/03/2017 | ND | 2.19 | 109 | 2.00 | 0.644 | | |
| Toluene* | <0.050 | 0.050 | 02/03/2017 | ND | 2.15 | 107 | 2.00 | 0.651 | | |
| Ethylbenzene* | <0.050 | 0.050 | 02/03/2017 | ND | 2.15 | 107 | 2.00 | 0.687 | | |
| Total Xylenes* | <0.150 | 0.150 | 02/03/2017 | ND | 6.07 | 101 | 6.00 | 0.556 | | |
| Total BTEX | <0.300 | 0.300 | 02/03/2017 | ND | | | | | | |

Surrogate: 4-Bromofluorobenzene (PID) 103 % 73.6-140

| TPH 8015M | | mg/kg | | Analyzed By: MS | | | | | | |
|--------------|--------|-----------------|------------|-----------------|-----|------------|---------------|------|-----------|--|
| Analyte | Result | Reporting Limit | Analyzed | Method Blank | BS | % Recovery | True Value QC | RPD | Qualifier | |
| GRO C6-C10 | <10.0 | 10.0 | 02/02/2017 | ND | 192 | 96.0 | 200 | 10.2 | | |
| DRO >C10-C28 | 24.1 | 10.0 | 02/02/2017 | ND | 204 | 102 | 200 | 9.69 | | |

Surrogate: 1-Chlorooctane 81.9 % 35-147

Surrogate: 1-Chlorooctadecane 81.2 % 28-171

Cardinal Laboratories

*=Accredited Analyte

PLEASE NOTE: Liability and Damages. Cardinal's liability and client's exclusive remedy for any claim arising, whether based in contract or tort, shall be limited to the amount paid by client for analyses. All claims, including those for negligence and any other cause whatsoever shall be deemed waived unless made in writing and received by Cardinal within thirty (30) days after completion of the applicable service. In no event shall Cardinal be liable for incidental or consequential damages, including, without limitation, business interruptions, loss of use, or loss of profits incurred by client, its subsidiaries, affiliates, or successors arising out of or related to the performance of the services hereunder by Cardinal, regardless of whether such claim is based upon any of the above stated reasons or otherwise. Results relate only to the samples identified above. This report shall not be reproduced except in full with written approval of Cardinal Laboratories.

Celey D. Keene, Lab Director/Quality Manager



PHONE (575) 393-2326 • 101 E. MARLAND • HOBBS, NM 88240

Analytical Results For:

READ & STEVENS
JOE TOVAR
P.O. BOX 1719
LOVINGTON NM, 88260
Fax To: not given

| | | | |
|-------------------|-------------|---------------------|---------------|
| Received: | 02/02/2017 | Sampling Date: | 02/01/2017 |
| Reported: | 02/03/2017 | Sampling Type: | Soil |
| Project Name: | SHELL STATE | Sampling Condition: | Cool & Intact |
| Project Number: | NONE GIVEN | Sample Received By: | Jodi Henson |
| Project Location: | SHELL #3 | | |

Sample ID: SHELL 5 (H700253-03)

| BTX 8021B | | mg/kg | | Analyzed By: MS | | | | | |
|----------------|--------|-----------------|------------|-----------------|------|------------|---------------|-------|-----------|
| Analyte | Result | Reporting Limit | Analyzed | Method Blank | BS | % Recovery | True Value QC | RPD | Qualifier |
| Benzene* | <0.050 | 0.050 | 02/03/2017 | ND | 2.19 | 109 | 2.00 | 0.644 | |
| Toluene* | <0.050 | 0.050 | 02/03/2017 | ND | 2.15 | 107 | 2.00 | 0.651 | |
| Ethylbenzene* | <0.050 | 0.050 | 02/03/2017 | ND | 2.15 | 107 | 2.00 | 0.687 | |
| Total Xylenes* | <0.150 | 0.150 | 02/03/2017 | ND | 6.07 | 101 | 6.00 | 0.556 | |
| Total BTX | <0.300 | 0.300 | 02/03/2017 | ND | | | | | |

Surrogate: 4-Bromofluorobenzene (PID) 103 % 73.6-140

| TPH 8015M | | mg/kg | | Analyzed By: MS | | | | | |
|--------------|--------|-----------------|------------|-----------------|-----|------------|---------------|------|-----------|
| Analyte | Result | Reporting Limit | Analyzed | Method Blank | BS | % Recovery | True Value QC | RPD | Qualifier |
| GRO C6-C10 | <10.0 | 10.0 | 02/02/2017 | ND | 192 | 96.0 | 200 | 10.2 | |
| DRO >C10-C28 | 58.1 | 10.0 | 02/02/2017 | ND | 204 | 102 | 200 | 9.69 | |

Surrogate: 1-Chlorooctane 81.3 % 35-147

Surrogate: 1-Chlorooctadecane 88.9 % 28-171

Cardinal Laboratories

*=Accredited Analyte

PLEASE NOTE: Liability and Damages. Cardinal's liability and client's exclusive remedy for any claim arising, whether based in contract or tort, shall be limited to the amount paid by client for analyses. All claims, including those for negligence and any other cause whatsoever shall be deemed waived unless made in writing and received by Cardinal within thirty (30) days after completion of the applicable service. In no event shall Cardinal be liable for incidental or consequential damages, including, without limitation, business interruptions, loss of use, or loss of profits incurred by client, its subsidiaries, affiliates or successors arising out of or related to the performance of the services hereunder by Cardinal, regardless of whether such claim is based upon any of the above stated reasons or otherwise. Results relate only to the samples identified above. This report shall not be reproduced except in full with written approval of Cardinal Laboratories.

Celey D. Keene

Celey D. Keene, Lab Director/Quality Manager



PHONE (575) 393-2326 • 101 E. MARLAND • HOBBS, NM 88240

Notes and Definitions

| | |
|-------|---|
| QR-02 | The RPD result exceeded the QC control limits; however, both percent recoveries were acceptable. Sample results for the QC batch were accepted based on percent recoveries and completeness of QC data. |
| ND | Analyte NOT DETECTED at or above the reporting limit |
| RPD | Relative Percent Difference |
| ** | Samples not received at proper temperature of 6°C or below. |
| *** | Insufficient time to reach temperature. |
| - | Chloride by SM4500C-B does not require samples be received at or below 6°C Samples reported on an as received basis (wet) unless otherwise noted on report |

Cardinal Laboratories

*=Accredited Analyte

PLEASE NOTE: Liability and Damages. Cardinal's liability and client's exclusive remedy for any claim arising, whether based in contract or tort, shall be limited to the amount paid by client for analyses. All claims, including those for negligence and any other cause whatsoever shall be deemed waived unless made in writing and received by Cardinal within thirty (30) days after completion of the applicable service. In no event shall Cardinal be liable for incidental or consequential damages, including, without limitation, business interruptions, loss of use, or loss of profits incurred by client, its subsidiaries, affiliates or successors arising out of or related to the performance of the services hereunder by Cardinal, regardless of whether such claim is based upon any of the above stated reasons or otherwise. Results relate only to the samples identified above. This report shall not be reproduced except in full with written approval of Cardinal Laboratories.

Celey D. Keene, Lab Director/Quality Manager



CHAIN-OF-CUSTODY AND ANALYSIS REQUEST

101 East Marland, Hobbs, NM 88240
(575) 393-2326 FAX (575) 393-2476

[illegible]



PHONE (575) 393-2326 • 101 E. MARLAND • HOBBS, NM 88240

February 06, 2017

ERIC GARCIA

REPUBLIC BACKHOE SERVICES

47 E. DICKENS RD

LOVINGTON, NM 88260

RE: READ & STEVENS #3

Enclosed are the results of analyses for samples received by the laboratory on 01/31/17 12:50.

Cardinal Laboratories is accredited through Texas NELAP under certificate number T104704398-16-8. Accreditation applies to drinking water, non-potable water and solid and chemical materials. All accredited analytes are denoted by an asterisk (*). For a complete list of accredited analytes and matrices visit the TCEQ website at www.tceq.texas.gov/field/qa/lab_accr_cred_certif.html.

Cardinal Laboratories is accredited through the State of Colorado Department of Public Health and Environment for:

| | |
|------------------|------------------------------|
| Method EPA 552.2 | Haloacetic Acids (HAA-5) |
| Method EPA 524.2 | Total Trihalomethanes (TTHM) |
| Method EPA 524.4 | Regulated VOCs (V1, V2, V3) |

Accreditation applies to public drinking water matrices.

This report meets NELAP requirements and is made up of a cover page, analytical results, and a copy of the original chain-of-custody. If you have any questions concerning this report, please feel free to contact me.

Sincerely,

Celey D. Keene

Lab Director/Quality Manager



PHONE (575) 393-2326 • 101 E. MARLAND • HOBBS, NM 88240

Analytical Results For:

REPUBLIC BACKHOE SERVICES
ERIC GARCIA
47 E. DICKENS RD
LOVINGTON NM, 88260
Fax To: NONE

| | | | |
|-------------------|-------------------|---------------------|----------------|
| Received: | 01/31/2017 | Sampling Date: | 01/30/2017 |
| Reported: | 02/06/2017 | Sampling Type: | Soil |
| Project Name: | READ & STEVENS #3 | Sampling Condition: | Cool & Intact |
| Project Number: | NONE GIVEN | Sample Received By: | Celey D. Keene |
| Project Location: | LEA COUNTY, NM | | |

Sample ID: 2 (H700227-01)

| Chloride, SM4500Cl-B | | mg/kg | | Analyzed By: AC | | | | | |
|----------------------|--------|-----------------|------------|-----------------|-----|------------|---------------|------|-----------|
| Analyte | Result | Reporting Limit | Analyzed | Method Blank | BS | % Recovery | True Value QC | RPD | Qualifier |
| Chloride | 2200 | 16.0 | 02/03/2017 | ND | 416 | 104 | 400 | 3.77 | |

Sample ID: 5 (H700227-02)

| Chloride, SM4500Cl-B | | mg/kg | | Analyzed By: AC | | | | | |
|----------------------|--------|-----------------|------------|-----------------|-----|------------|---------------|------|-----------|
| Analyte | Result | Reporting Limit | Analyzed | Method Blank | BS | % Recovery | True Value QC | RPD | Qualifier |
| Chloride | 2480 | 16.0 | 02/03/2017 | ND | 416 | 104 | 400 | 3.77 | |

Sample ID: 7 (H700227-03)

| Chloride, SM4500Cl-B | | mg/kg | | Analyzed By: AC | | | | | |
|----------------------|--------|-----------------|------------|-----------------|-----|------------|---------------|------|-----------|
| Analyte | Result | Reporting Limit | Analyzed | Method Blank | BS | % Recovery | True Value QC | RPD | Qualifier |
| Chloride | 2080 | 16.0 | 02/03/2017 | ND | 416 | 104 | 400 | 3.77 | |

Cardinal Laboratories

*=Accredited Analyte

PLEASE NOTE: Liability and Damages. Cardinal's liability and client's exclusive remedy for any claim arising, whether based in contract or tort, shall be limited to the amount paid by client for analysis. All claims, including those for negligence and any other cause whatsoever shall be deemed waived unless made in writing and received by Cardinal within thirty (30) days after completion of the applicable service. In no event shall Cardinal be liable for incidental or consequential damages, including, without limitation, business interruptions, loss of use, or loss of profits incurred by client, its subsidiaries, affiliates or successors arising out of or related to the performance of the services hereunder by Cardinal, regardless of whether such claim is based upon any of the above stated reasons or otherwise. Results relate only to the samples identified above. This report shall not be reproduced except in full with written approval of Cardinal Laboratories.

Celey D. Keene, Lab Director/Quality Manager



PHONE (575) 393-2326 • 101 E. MARLAND • HOBBS, NM 88240

Notes and Definitions

| | |
|-----|---|
| ND | Analyte NOT DETECTED at or above the reporting limit |
| RPD | Relative Percent Difference |
| ** | Samples not received at proper temperature of 6°C or below. |
| *** | Insufficient time to reach temperature. |
| - | Chloride by SM4500C-B does not require samples be received at or below 6°C Samples reported on an as received basis (wet) unless otherwise noted on report |

Cardinal Laboratories

*=Accredited Analyte

PLEASE NOTE: Liability and Damages. Cardinal's liability and client's exclusive remedy for any claim arising, whether based in contract or tort, shall be limited to the amount paid by client for analyses. All claims, including those for negligence and any other cause whatsoever shall be deemed waived unless made in writing and received by Cardinal within thirty (30) days after completion of the applicable service. In no event shall Cardinal be liable for incidental or consequential damages, including, without limitation, business interruptions, loss of use, or loss of profits incurred by client, its subsidiaries, affiliates or successors arising out of or related to the performance of the services hereunder by Cardinal, regardless of whether such claim is based upon any of the above stated reasons or otherwise. Results relate only to the samples identified above. This report shall not be reproduced except in full with written approval of Cardinal Laboratories.

A handwritten signature in black ink, appearing to read "Celey D. Keene".

Celey D. Keene, Lab Director/Quality Manager



CHAIN-OF-CUSTODY AND ANALYSIS REQUEST

101 East Marland, Hobbs, NM 88240
(575) 393-2326 FAX (575) 393-2476

[illegible]



PHONE (575) 393-2326 • 101 E. MARLAND • HOBBS, NM 88240

February 23, 2017

ERIC GARCIA

REPUBLIC BACKHOE SERVICES

47 E. DICKENS RD

LOVINGTON, NM 88260

RE: SHELL ST#3

Enclosed are the results of analyses for samples received by the laboratory on 02/16/17 9:30.

Cardinal Laboratories is accredited through Texas NELAP under certificate number T104704398-16-8. Accreditation applies to drinking water, non-potable water and solid and chemical materials. All accredited analytes are denoted by an asterisk (*). For a complete list of accredited analytes and matrices visit the TCEQ website at www.tceq.texas.gov/field/qa/lab_accred_certif.html.

Cardinal Laboratories is accredited through the State of Colorado Department of Public Health and Environment for:

| | |
|------------------|------------------------------|
| Method EPA 552.2 | Haloacetic Acids (HAA-5) |
| Method EPA 524.2 | Total Trihalomethanes (TTHM) |
| Method EPA 524.4 | Regulated VOCs (V1, V2, V3) |

Accreditation applies to public drinking water matrices.

This report meets NELAP requirements and is made up of a cover page, analytical results, and a copy of the original chain-of-custody. If you have any questions concerning this report, please feel free to contact me.

Sincerely,

Celely D. Keene

Lab Director/Quality Manager



PHONE (575) 393-2326 * 101 E. MARLAND * HOBBS, NM 88240

Analytical Results For:

REPUBLIC BACKHOE SERVICES
ERIC GARCIA
47 E. DICKENS RD
LOVINGTON NM, 88260
Fax To: NONE

Received: 02/16/2017
Reported: 02/23/2017
Project Name: SHELL ST#3
Project Number: NONE GIVEN
Project Location: TATUM

Sampling Date: 02/15/2017
Sampling Type: Soil
Sampling Condition: Cool & Intact
Sample Received By: Jodi Henson

Sample ID: NS 1 (H700398-01)

| Chloride, SM4500Cl-B | | mg/kg | | Analyzed By: AC | | | | | |
|----------------------|--------|-----------------|------------|-----------------|-----|------------|---------------|------|-----------|
| Analyte | Result | Reporting Limit | Analyzed | Method Blank | BS | % Recovery | True Value QC | RPD | Qualifier |
| Chloride | 624 | 16.0 | 02/20/2017 | ND | 448 | 112 | 400 | 0.00 | |

Sample ID: NS 2 (H700398-02)

| Chloride, SM4500Cl-B | | mg/kg | | Analyzed By: AC | | | | | |
|----------------------|--------|-----------------|------------|-----------------|-----|------------|---------------|------|-----------|
| Analyte | Result | Reporting Limit | Analyzed | Method Blank | BS | % Recovery | True Value QC | RPD | Qualifier |
| Chloride | 80.0 | 16.0 | 02/20/2017 | ND | 448 | 112 | 400 | 0.00 | |

Sample ID: NS 3 (H700398-03)

| Chloride, SM4500Cl-B | | mg/kg | | Analyzed By: AC | | | | | |
|----------------------|--------|-----------------|------------|-----------------|-----|------------|---------------|------|-----------|
| Analyte | Result | Reporting Limit | Analyzed | Method Blank | BS | % Recovery | True Value QC | RPD | Qualifier |
| Chloride | 16.0 | 16.0 | 02/20/2017 | ND | 448 | 112 | 400 | 0.00 | |

Sample ID: NS 4 (H700398-04)

| Chloride, SM4500Cl-B | | mg/kg | | Analyzed By: AC | | | | | |
|----------------------|--------|-----------------|------------|-----------------|-----|------------|---------------|------|-----------|
| Analyte | Result | Reporting Limit | Analyzed | Method Blank | BS | % Recovery | True Value QC | RPD | Qualifier |
| Chloride | 32.0 | 16.0 | 02/20/2017 | ND | 448 | 112 | 400 | 0.00 | |

Cardinal Laboratories

*=Accredited Analyte

PLEASE NOTE: Liability and Damages. Cardinal's liability and client's exclusive remedy for any claim arising, whether based in contract or tort, shall be limited to the amount paid by client for analyses. All claims, including those for negligence and any other cause whatsoever shall be deemed waived unless made in writing and received by Cardinal within thirty (30) days after completion of the applicable service. In no event shall Cardinal be liable for incidental or consequential damages, including, without limitation, business interruptions, loss of use, or loss of profits incurred by client, its subsidiaries, affiliates or successors arising out of or related to the performance of the services hereunder by Cardinal, regardless of whether such claim is based upon any of the above stated reasons or otherwise. Results relate only to the samples identified above. This report shall not be reproduced except in full with written approval of Cardinal Laboratories.

Celey D. Keene, Lab Director/Quality Manager



PHONE (575) 393-2326 • 101 E. MARLAND • HOBBS, NM 88240

Analytical Results For:

REPUBLIC BACKHOE SERVICES
ERIC GARCIA
47 E. DICKENS RD
LOVINGTON NM, 88260
Fax To: NONE

Received: 02/16/2017
Reported: 02/23/2017
Project Name: SHELL ST#3
Project Number: NONE GIVEN
Project Location: TATUM

Sampling Date: 02/15/2017
Sampling Type: Soil
Sampling Condition: Cool & Intact
Sample Received By: Jodi Henson

Sample ID: N 2 (H700398-05)

| BTEX 8021B | | mg/kg | | Analyzed By: MS | | | | | |
|----------------|--------|-----------------|------------|-----------------|------|------------|---------------|------|-----------|
| Analyte | Result | Reporting Limit | Analyzed | Method Blank | BS | % Recovery | True Value QC | RPD | Qualifier |
| Benzene* | <0.050 | 0.050 | 02/19/2017 | ND | 2.02 | 101 | 2.00 | 7.72 | |
| Toluene* | <0.050 | 0.050 | 02/19/2017 | ND | 1.88 | 94.2 | 2.00 | 9.17 | |
| Ethylbenzene* | <0.050 | 0.050 | 02/19/2017 | ND | 1.84 | 92.0 | 2.00 | 12.1 | |
| Total Xylenes* | <0.150 | 0.150 | 02/19/2017 | ND | 5.25 | 87.4 | 6.00 | 12.0 | |
| Total BTEX | <0.300 | 0.300 | 02/19/2017 | ND | | | | | |

Surrogate: 4-Bromofluorobenzene (PID) 98.0 % 73.6-140

| TPH 8015M | | mg/kg | | Analyzed By: MS | | | | | |
|--------------|--------|-----------------|------------|-----------------|-----|------------|---------------|-------|-----------|
| Analyte | Result | Reporting Limit | Analyzed | Method Blank | BS | % Recovery | True Value QC | RPD | Qualifier |
| GRO C6-C10 | <10.0 | 10.0 | 02/17/2017 | ND | 187 | 93.3 | 200 | 0.843 | |
| DRO >C10-C28 | <10.0 | 10.0 | 02/17/2017 | ND | 201 | 100 | 200 | 0.331 | |

Surrogate: 1-Chlorooctane 79.9 % 35-147

Surrogate: 1-Chlorooctadecane 89.8 % 28-171

Sample ID: N2 C (H700398-06)

| Chloride, SM4500Cl-B | | mg/kg | | Analyzed By: AC | | | | | |
|----------------------|--------|-----------------|------------|-----------------|-----|------------|---------------|------|-----------|
| Analyte | Result | Reporting Limit | Analyzed | Method Blank | BS | % Recovery | True Value QC | RPD | Qualifier |
| Chloride | 32.0 | 16.0 | 02/21/2017 | ND | 448 | 112 | 400 | 0.00 | |

Cardinal Laboratories

*=Accredited Analyte

PLEASE NOTE: Liability and Damages. Cardinal's liability and client's exclusive remedy for any claim arising, whether based in contract or tort, shall be limited to the amount paid by client for analyses. All claims, including those for negligence and any other cause whatsoever shall be deemed waived unless made in writing and received by Cardinal within thirty (30) days after completion of the applicable service. In no event shall Cardinal be liable for incidental or consequential damages, including, without limitation, business interruptions, loss of use, or loss of profits incurred by client, its subsidiaries, affiliates or successors arising out of or related to the performance of the services hereunder by Cardinal, regardless of whether such claim is based upon any of the above stated reasons or otherwise. Results relate only to the samples identified above. This report shall not be reproduced except in full with written approval of Cardinal Laboratories.

Celey D. Keene, Lab Director/Quality Manager



PHONE (575) 393-2326 • 101 E. MARLAND • HOBBS, NM 88240

Analytical Results For:

REPUBLIC BACKHOE SERVICES
ERIC GARCIA
47 E. DICKENS RD
LOVINGTON NM, 88260
Fax To: NONE

Received: 02/16/2017
Reported: 02/23/2017
Project Name: SHELL ST#3
Project Number: NONE GIVEN
Project Location: TATUM

Sampling Date: 02/15/2017
Sampling Type: Soil
Sampling Condition: Cool & Intact
Sample Received By: Jodi Henson

Sample ID: NE 0 (H700398-07)

| BTEX 8021B | | mg/kg | | Analyzed By: MS | | | | | | |
|----------------|--------|-----------------|------------|-----------------|------|------------|---------------|------|-----------|--|
| Analyte | Result | Reporting Limit | Analyzed | Method Blank | BS | % Recovery | True Value QC | RPD | Qualifier | |
| Benzene* | <0.050 | 0.050 | 02/19/2017 | ND | 2.02 | 101 | 2.00 | 7.72 | | |
| Toluene* | <0.050 | 0.050 | 02/19/2017 | ND | 1.88 | 94.2 | 2.00 | 9.17 | | |
| Ethylbenzene* | <0.050 | 0.050 | 02/19/2017 | ND | 1.84 | 92.0 | 2.00 | 12.1 | | |
| Total Xylenes* | <0.150 | 0.150 | 02/19/2017 | ND | 5.25 | 87.4 | 6.00 | 12.0 | | |
| Total BTEX | <0.300 | 0.300 | 02/19/2017 | ND | | | | | | |

Surrogate: 4-Bromofluorobenzene (PID) 99.0 % 73.6-140

| TPH 8015M | | mg/kg | | Analyzed By: MS | | | | | | |
|--------------|--------|-----------------|------------|-----------------|-----|------------|---------------|-------|-----------|--|
| Analyte | Result | Reporting Limit | Analyzed | Method Blank | BS | % Recovery | True Value QC | RPD | Qualifier | |
| GRO C6-C10 | <10.0 | 10.0 | 02/17/2017 | ND | 187 | 93.3 | 200 | 0.843 | | |
| DRO >C10-C28 | <10.0 | 10.0 | 02/17/2017 | ND | 201 | 100 | 200 | 0.331 | | |

Surrogate: 1-Chlorooctane 85.9 % 35-147

Surrogate: 1-Chlorooctadecane 93.3 % 28-171

Sample ID: NE 0 C (H700398-08)

| Chloride, SM4500Cl-B | | mg/kg | | Analyzed By: AC | | | | | | |
|----------------------|--------|-----------------|------------|-----------------|-----|------------|---------------|------|-----------|--|
| Analyte | Result | Reporting Limit | Analyzed | Method Blank | BS | % Recovery | True Value QC | RPD | Qualifier | |
| Chloride | 32.0 | 16.0 | 02/21/2017 | ND | 448 | 112 | 400 | 0.00 | | |

Cardinal Laboratories

*=Accredited Analyte

PLEASE NOTE: Liability and Damages. Cardinal's liability and clients exclusive remedy for any claim arising, whether based in contract or tort, shall be limited to the amount paid by client for analyses. All claims, including those for negligence and any other cause whatsoever shall be deemed waived unless made in writing and received by Cardinal within thirty (30) days after completion of the applicable service. In no event shall Cardinal be liable for incidental or consequential damages, including, without limitation, business interruptions, loss of use, or loss of profits incurred by client, its subsidiaries, affiliates or successors arising out of or related to the performance of the services hereunder by Cardinal, regardless of whether such claim is based upon any of the above stated reasons or otherwise. Results relate only to the samples identified above. This report shall not be reproduced except in full with written approval of Cardinal Laboratories.

Celey D. Keene, Lab Director/Quality Manager



PHONE (575) 393-2326 • 101 E. MARLAND • HOBBS, NM 88240

Analytical Results For:

REPUBLIC BACKHOE SERVICES
ERIC GARCIA
47 E. DICKENS RD
LOVINGTON NM, 88260
Fax To: NONE

Received: 02/16/2017
Reported: 02/23/2017
Project Name: SHELL ST#3
Project Number: NONE GIVEN
Project Location: TATUM

Sampling Date: 02/15/2017
Sampling Type: Soil
Sampling Condition: Cool & Intact
Sample Received By: Jodi Henson

Sample ID: NW 6 (H700398-09)

| BTEX 8021B | | mg/kg | | Analyzed By: MS | | | | | | |
|----------------|--------|-----------------|------------|-----------------|------|------------|---------------|------|-----------|--|
| Analyte | Result | Reporting Limit | Analyzed | Method Blank | BS | % Recovery | True Value QC | RPD | Qualifier | |
| Benzene* | <0.050 | 0.050 | 02/19/2017 | ND | 2.02 | 101 | 2.00 | 7.72 | | |
| Toluene* | <0.050 | 0.050 | 02/19/2017 | ND | 1.88 | 94.2 | 2.00 | 9.17 | | |
| Ethylbenzene* | <0.050 | 0.050 | 02/19/2017 | ND | 1.84 | 92.0 | 2.00 | 12.1 | | |
| Total Xylenes* | <0.150 | 0.150 | 02/19/2017 | ND | 5.25 | 87.4 | 6.00 | 12.0 | | |
| Total BTEX | <0.300 | 0.300 | 02/19/2017 | ND | | | | | | |

Surrogate: 4-Bromofluorobenzene (PID) 98.8 % 73.6-140

| TPH 8015M | | mg/kg | | Analyzed By: MS | | | | | | |
|--------------|--------|-----------------|------------|-----------------|-----|------------|---------------|-------|-----------|--|
| Analyte | Result | Reporting Limit | Analyzed | Method Blank | BS | % Recovery | True Value QC | RPD | Qualifier | |
| GRO C6-C10 | <10.0 | 10.0 | 02/17/2017 | ND | 187 | 93.3 | 200 | 0.843 | | |
| DRO >C10-C28 | <10.0 | 10.0 | 02/17/2017 | ND | 201 | 100 | 200 | 0.331 | | |

Surrogate: 1-Chlorooctane 81.9 % 33-147

Surrogate: 1-Chlorooctadecane 93.6 % 28-171

Sample ID: NW 9 C (H700398-10)

| Chloride, SM4500Cl-B | | mg/kg | | Analyzed By: AC | | | | | | |
|----------------------|--------|-----------------|------------|-----------------|-----|------------|---------------|------|-----------|--|
| Analyte | Result | Reporting Limit | Analyzed | Method Blank | BS | % Recovery | True Value QC | RPD | Qualifier | |
| Chloride | 16.0 | 16.0 | 02/21/2017 | ND | 448 | 112 | 400 | 0.00 | | |

Cardinal Laboratories

*=Accredited Analyte

PLEASE NOTE: Liability and Damages. Cardinal's liability and client's exclusive remedy for any claims arising, whether based in contract or tort, shall be limited to the amount paid by client for analysis. All claims, including those for negligence and any other cause whatsoever shall be deemed waived unless made in writing and received by Cardinal within thirty (30) days after completion of the applicable service. In no event shall Cardinal be liable for incidental or consequential damages, including, without limitation, business interruptions, loss of use, or loss of profits incurred by client, its subsidiaries, affiliates or successors arising out of or related to the performance of the services hereunder by Cardinal, regardless of whether such claim is based upon any of the above stated reasons or otherwise. Results relate only to the samples identified above. This report shall not be reproduced except in full with written approval of Cardinal Laboratories.

Celey D. Keene, Lab Director/Quality Manager



PHONE (575) 393-2326 • 101 E. MARLAND • HOBBS, NM 88240

Analytical Results For:

REPUBLIC BACKHOE SERVICES
ERIC GARCIA
47 E. DICKENS RD
LOVINGTON NM, 88260
Fax To: NONE

Received: 02/16/2017
Reported: 02/23/2017
Project Name: SHELL ST#3
Project Number: NONE GIVEN
Project Location: TATUM

Sampling Date: 02/15/2017
Sampling Type: Soil
Sampling Condition: Cool & Intact
Sample Received By: Jodi Henson

Sample ID: W 2 (H700398-11)

| BTEX 8021B | | mg/kg | | Analyzed By: MS | | | | | |
|----------------|--------|-----------------|------------|-----------------|------|------------|---------------|------|-----------|
| Analyte | Result | Reporting Limit | Analyzed | Method Blank | BS | % Recovery | True Value QC | RPD | Qualifier |
| Benzene* | <0.050 | 0.050 | 02/19/2017 | ND | 2.02 | 101 | 2.00 | 7.72 | |
| Toluene* | <0.050 | 0.050 | 02/19/2017 | ND | 1.88 | 94.2 | 2.00 | 9.17 | |
| Ethylbenzene* | <0.050 | 0.050 | 02/19/2017 | ND | 1.84 | 92.0 | 2.00 | 12.1 | |
| Total Xylenes* | <0.150 | 0.150 | 02/19/2017 | ND | 5.25 | 87.4 | 6.00 | 12.0 | |
| Total BTEX | <0.300 | 0.300 | 02/19/2017 | ND | | | | | |

Surrogate: 4-Bromofluorobenzene (PID) 98.5 % 73.6-140

| TPH 8015M | | mg/kg | | Analyzed By: MS | | | | | |
|--------------|--------|-----------------|------------|-----------------|-----|------------|---------------|-------|-----------|
| Analyte | Result | Reporting Limit | Analyzed | Method Blank | BS | % Recovery | True Value QC | RPD | Qualifier |
| GRO C6-C10 | <10.0 | 10.0 | 02/17/2017 | ND | 191 | 95.4 | 200 | 0.386 | |
| DRO >C10-C28 | <10.0 | 10.0 | 02/17/2017 | ND | 206 | 103 | 200 | 2.88 | |

Surrogate: 1-Chlorooctane 83.0 % 33-147

Surrogate: 1-Chlorooctadecane 99.6 % 28-171

Sample ID: W2 C (H700398-12)

| Chloride, SM4500Cl-B | | mg/kg | | Analyzed By: AC | | | | | |
|----------------------|--------|-----------------|------------|-----------------|-----|------------|---------------|------|-----------|
| Analyte | Result | Reporting Limit | Analyzed | Method Blank | BS | % Recovery | True Value QC | RPD | Qualifier |
| Chloride | 16.0 | 16.0 | 02/21/2017 | ND | 448 | 112 | 400 | 0.00 | |

Cardinal Laboratories

*=Accredited Analyte

PLEASE NOTE: Liability and Damages. Cardinal's liability and client's exclusive remedy for any claim arising, whether based in contract or tort, shall be limited to the amount paid by client for analysis. All claims, including those for negligence and any other cause whatsoever shall be deemed waived unless made in writing and received by Cardinal within thirty (30) days after completion of the applicable service. In no event shall Cardinal be liable for incidental or consequential damages, including, without limitation, business interruptions, loss of use, or loss of profits incurred by client, its subsidiaries, affiliates or successors arising out of or related to the performance of the services hereunder by Cardinal, regardless of whether such claim is based upon any of the above stated reasons or otherwise. Results relate only to the samples identified above. This report shall not be reproduced except in full with written approval of Cardinal Laboratories.

Celey D. Keene, Lab Director/Quality Manager



PHONE (575) 393-2326 • 101 E. MARLAND • HOBBS, NM 88240

Analytical Results For:

REPUBLIC BACKHOE SERVICES
ERIC GARCIA
47 E. DICKENS RD
LOVINGTON NM, 88260
Fax To: NONE

Received: 02/16/2017
Reported: 02/23/2017
Project Name: SHELL ST#3
Project Number: NONE GIVEN
Project Location: TATUM

Sampling Date: 02/15/2017
Sampling Type: Soil
Sampling Condition: Cool & Intact
Sample Received By: Jodi Henson

Sample ID: E 2 (H700398-13)

| BTX 80218 | | mg/kg | | Analyzed By: MS | | | | | |
|----------------|--------|-----------------|------------|-----------------|------|------------|---------------|------|-----------|
| Analyte | Result | Reporting Limit | Analyzed | Method Blank | BS | % Recovery | True Value QC | RPD | Qualifier |
| Benzene* | <0.050 | 0.050 | 02/19/2017 | ND | 2.02 | 101 | 2.00 | 7.72 | |
| Toluene* | <0.050 | 0.050 | 02/19/2017 | ND | 1.88 | 94.2 | 2.00 | 9.17 | |
| Ethylbenzene* | <0.050 | 0.050 | 02/19/2017 | ND | 1.84 | 92.0 | 2.00 | 12.1 | |
| Total Xylenes* | <0.150 | 0.150 | 02/19/2017 | ND | 5.25 | 87.4 | 6.00 | 12.0 | |
| Total BTEX | <0.300 | 0.300 | 02/19/2017 | ND | | | | | |

Surrogate: 4-Bromofluorobenzene (PID) 98.0 % 73.6-140

| TPH 8015M | | mg/kg | | Analyzed By: MS | | | | | |
|--------------|--------|-----------------|------------|-----------------|-----|------------|---------------|-------|-----------|
| Analyte | Result | Reporting Limit | Analyzed | Method Blank | BS | % Recovery | True Value QC | RPD | Qualifier |
| GRO C6-C10 | <10.0 | 10.0 | 02/17/2017 | ND | 191 | 95.4 | 200 | 0.386 | |
| DRO >C10-C28 | <10.0 | 10.0 | 02/17/2017 | ND | 206 | 103 | 200 | 2.88 | |

Surrogate: 1-Chlorooctane 82.5 % 35-147

Surrogate: 1-Chlorooctadecane 90.3 % 28-171

Sample ID: E2 C (H700398-14)

| Chloride, SM4500Cl-B | | mg/kg | | Analyzed By: AC | | | | | |
|----------------------|--------|-----------------|------------|-----------------|-----|------------|---------------|------|-----------|
| Analyte | Result | Reporting Limit | Analyzed | Method Blank | BS | % Recovery | True Value QC | RPD | Qualifier |
| Chloride | <16.0 | 16.0 | 02/21/2017 | ND | 448 | 112 | 400 | 0.00 | |

Cardinal Laboratories

*=Accredited Analyte

PLAQUE NOTE: Liability and Damages. Cardinal's liability and clients' exclusive remedy for any claims arising, whether based in contract or tort, shall be limited to the amount paid by client for analysis. All claims, including those for negligence and any other cause whatsoever shall be deemed waived unless made in writing and received by Cardinal within thirty (30) days after completion of the applicable service. In no event shall Cardinal be liable for incidental or consequential damages, including, without limitation, business interruptions, loss of use, or loss of profits incurred by client, its subsidiaries, affiliates or successors arising out of or related to the performance of the services hereunder by Cardinal, regardless of whether such claim is based upon any of the above stated reasons or otherwise. Results relate only to the samples identified above. This report shall not be reproduced except in full with written approval of Cardinal Laboratories.

Celey D. Keene, Lab Director/Quality Manager



PHONE (575) 393-2326 • 101 E. MARLAND • HOBBS, NM 88240

Analytical Results For:

REPUBLIC BACKHOE SERVICES
ERIC GARCIA
47 E. DICKENS RD
LOVINGTON NM, 88260
Fax To: NONE

| | | | |
|-------------------|------------|---------------------|---------------|
| Received: | 02/16/2017 | Sampling Date: | 02/15/2017 |
| Reported: | 02/23/2017 | Sampling Type: | Soil |
| Project Name: | SHELL ST#3 | Sampling Condition: | Cool & Intact |
| Project Number: | NONE GIVEN | Sample Received By: | Jodi Henson |
| Project Location: | TATUM | | |

Sample ID: S 2 (H700398-15)

| BTEX 80218 | | mg/kg | | Analyzed By: MS | | | | | |
|----------------|--------|-----------------|------------|-----------------|------|------------|---------------|-------|-----------|
| Analyte | Result | Reporting Limit | Analyzed | Method Blank | BS | % Recovery | True Value QC | RPD | Qualifier |
| Benzene* | <0.050 | 0.050 | 02/19/2017 | ND | 2.16 | 108 | 2.00 | 0.378 | |
| Toluene* | <0.050 | 0.050 | 02/19/2017 | ND | 2.03 | 102 | 2.00 | 0.392 | |
| Ethylbenzene* | <0.050 | 0.050 | 02/19/2017 | ND | 2.05 | 103 | 2.00 | 0.236 | |
| Total Xylenes* | <0.150 | 0.150 | 02/19/2017 | ND | 5.85 | 97.5 | 6.00 | 0.262 | |
| Total BTEX | <0.300 | 0.300 | 02/19/2017 | ND | | | | | |

Surrogate: 4-Bromofluorobenzene (PID) 98.5 % 73.6-140

| TPH 8015M | | mg/kg | | Analyzed By: MS | | | | | |
|--------------|--------|-----------------|------------|-----------------|-----|------------|---------------|-------|-----------|
| Analyte | Result | Reporting Limit | Analyzed | Method Blank | BS | % Recovery | True Value QC | RPD | Qualifier |
| GRO C6-C10 | <10.0 | 10.0 | 02/17/2017 | ND | 191 | 95.4 | 200 | 0.386 | |
| DRO >C10-C28 | <10.0 | 10.0 | 02/17/2017 | ND | 206 | 103 | 200 | 2.88 | |

Surrogate: 1-Chlorooctane 77.1 % 35-147

Surrogate: 1-Chlorooctadecane 84.2 % 28-171

Sample ID: S2 C (H700398-16)

| Chloride, SM4500Cl-B | | mg/kg | | Analyzed By: AC | | | | | |
|----------------------|--------|-----------------|------------|-----------------|-----|------------|---------------|------|-----------|
| Analyte | Result | Reporting Limit | Analyzed | Method Blank | BS | % Recovery | True Value QC | RPD | Qualifier |
| Chloride | 16.0 | 16.0 | 02/21/2017 | ND | 448 | 112 | 400 | 0.00 | |

Cardinal Laboratories

*=Accredited Analyte

PLEASE NOTE: Liability and Damages. Cardinal's liability and client's exclusive remedy for any claims arising, whether based in contract or tort, shall be limited to the amount paid by client for analysis. All claims, including those for negligence and any other cause whatsoever shall be deemed waived unless made in writing and received by Cardinal within thirty (30) days after completion of the applicable service. In no event shall Cardinal be liable for incidental or consequential damages, including, without limitation, business interruptions, loss of use, or loss of profits incurred by client, its subsidiaries, affiliates or successors arising out of or related to the performance of the services hereunder by Cardinal, regardless of whether such claim is based upon any of the above stated reasons or otherwise. Results relate only to the samples identified above. This report shall not be reproduced except in full with written approval of Cardinal Laboratories.

Celey D. Keene, Lab Director/Quality Manager



PHONE (575) 393-2326 • 101 E. MARLAND • HOBBS, NM 88240

Analytical Results For:

REPUBLIC BACKHOE SERVICES
ERIC GARCIA
47 E. DICKENS RD
LOVINGTON NM, 88260
Fax To: NONE

Received: 02/16/2017
Reported: 02/23/2017
Project Name: SHELL ST#3
Project Number: NONE GIVEN
Project Location: TATUM

Sampling Date: 02/15/2017
Sampling Type: Soil
Sampling Condition: Cool & Intact
Sample Received By: Jodi Henson

Sample ID: SW 0 (H700398-17)

| BTEX 8021B | | mg/kg | | Analyzed By: MS | | | | | | |
|----------------|--------|-----------------|------------|-----------------|------|------------|---------------|-------|-----------|--|
| Analyte | Result | Reporting Limit | Analyzed | Method Blank | BS | % Recovery | True Value QC | RPD | Qualifier | |
| Benzene* | <0.050 | 0.050 | 02/19/2017 | ND | 2.16 | 108 | 2.00 | 0.378 | | |
| Toluene* | <0.050 | 0.050 | 02/19/2017 | ND | 2.03 | 102 | 2.00 | 0.392 | | |
| Ethylbenzene* | <0.050 | 0.050 | 02/19/2017 | ND | 2.05 | 103 | 2.00 | 0.236 | | |
| Total Xylenes* | <0.150 | 0.150 | 02/19/2017 | ND | 5.85 | 97.5 | 6.00 | 0.262 | | |
| Total BTEX | <0.300 | 0.300 | 02/19/2017 | ND | | | | | | |

Surrogate: 4-Bromofluorobenzene (PID) 99.8 % 73.6-140

| TPH 8015M | | mg/kg | | Analyzed By: MS | | | | | | |
|--------------|--------|-----------------|------------|-----------------|-----|------------|---------------|-------|-----------|--|
| Analyte | Result | Reporting Limit | Analyzed | Method Blank | BS | % Recovery | True Value QC | RPD | Qualifier | |
| GRO C6-C10 | <10.0 | 10.0 | 02/17/2017 | ND | 191 | 95.4 | 200 | 0.386 | | |
| DRO >C10-C28 | <10.0 | 10.0 | 02/17/2017 | ND | 206 | 103 | 200 | 2.88 | | |

Surrogate: 1-Chlorooctane 84.9 % 35-147

Surrogate: 1-Chlorooctadecane 96.1 % 28-171

Sample ID: SW 1 C (H700398-18)

| Chloride, SM4500Cl-B | | mg/kg | | Analyzed By: AC | | | | | | |
|----------------------|--------|-----------------|------------|-----------------|-----|------------|---------------|------|-----------|--|
| Analyte | Result | Reporting Limit | Analyzed | Method Blank | BS | % Recovery | True Value QC | RPD | Qualifier | |
| Chloride | 64.0 | 16.0 | 02/21/2017 | ND | 448 | 112 | 400 | 0.00 | | |

Cardinal Laboratories

*=Accredited Analyte

PLEASE NOTE: Liability and Damages. Cardinal's liability and client's exclusive remedy for any claim arising, whether based in contract or tort, shall be limited to the amount paid by client for analyses. All claims, including those for negligence and any other cause whatsoever shall be deemed waived unless made in writing and received by Cardinal within thirty (30) days after completion of the applicable service. In no event shall Cardinal be liable for incidental or consequential damages, including, without limitation, business interruptions, loss of use, or loss of profits incurred by client, its subsidiaries, affiliates or successors arising out of or related to the performance of the services hereunder by Cardinal, regardless of whether such claim is based upon any of the above stated reasons or otherwise. Results relate only to the samples identified above. This report shall not be reproduced except in full with written approval of Cardinal Laboratories.

Celey D. Keene, Lab Director/Quality Manager



PHONE (575) 393-2326 • 101 E. MARLAND • HOBBS, NM 88240

Analytical Results For:

REPUBLIC BACKHOE SERVICES
ERIC GARCIA
47 E. DICKENS RD
LOVINGTON NM, 88260
Fax To: NONE

Received: 02/16/2017
Reported: 02/23/2017
Project Name: SHELL ST#3
Project Number: NONE GIVEN
Project Location: TATUM

Sampling Date: 02/15/2017
Sampling Type: Soil
Sampling Condition: Cool & Intact
Sample Received By: Jodi Henson

Sample ID: SE 2 (H700398-19)

| BTEX 80218 | | mg/kg | | Analyzed By: MS | | | | | |
|----------------|--------|-----------------|------------|-----------------|------|------------|---------------|-------|-----------|
| Analyte | Result | Reporting Limit | Analyzed | Method Blank | BS | % Recovery | True Value QC | RPD | Qualifier |
| Benzene* | <0.050 | 0.050 | 02/19/2017 | ND | 2.16 | 108 | 2.00 | 0.378 | |
| Toluene* | <0.050 | 0.050 | 02/19/2017 | ND | 2.03 | 102 | 2.00 | 0.392 | |
| Ethylbenzene* | <0.050 | 0.050 | 02/19/2017 | ND | 2.05 | 103 | 2.00 | 0.236 | |
| Total Xylenes* | <0.150 | 0.150 | 02/19/2017 | ND | 5.85 | 97.5 | 6.00 | 0.262 | |
| Total BTEX | <0.300 | 0.300 | 02/19/2017 | ND | | | | | |

Surrogate: 4-Bromofluorobenzene (PID) 99.5 % 73.6-140

| TPH 8015M | | mg/kg | | Analyzed By: MS | | | | | |
|--------------|--------|-----------------|------------|-----------------|-----|------------|---------------|-------|-----------|
| Analyte | Result | Reporting Limit | Analyzed | Method Blank | BS | % Recovery | True Value QC | RPD | Qualifier |
| GRO C6-C10 | <10.0 | 10.0 | 02/17/2017 | ND | 191 | 95.4 | 200 | 0.386 | |
| DRO >C10-C28 | <10.0 | 10.0 | 02/17/2017 | ND | 206 | 103 | 200 | 2.88 | |

Surrogate: 1-Chlorooctane 83.7 % 35-147

Surrogate: 1-Chlorooctadecane 94.0 % 28-171

Sample ID: SE 2 C (H700398-20)

| Chloride, SM4500Cl-B | | mg/kg | | Analyzed By: AC | | | | | |
|----------------------|--------|-----------------|------------|-----------------|-----|------------|---------------|------|-----------|
| Analyte | Result | Reporting Limit | Analyzed | Method Blank | BS | % Recovery | True Value QC | RPD | Qualifier |
| Chloride | <16.0 | 16.0 | 02/21/2017 | ND | 448 | 112 | 400 | 0.00 | |

Cardinal Laboratories

*=Accredited Analyte

PLEASE NOTE: Liability and Damages. Cardinal's liability and client's exclusive remedy for any claim arising, whether based in contract or tort, shall be limited to the amount paid by client for analyses. All claims, including those for negligence and any other cause whatsoever shall be deemed waived unless made in writing and received by Cardinal within thirty (30) days after completion of the applicable service. In no event shall Cardinal be liable for incidental or consequential damages, including, without limitation, business interruptions, loss of use, or loss of profits incurred by client, its subsidiaries, affiliates or successors arising out of or related to the performance of the services hereunder by Cardinal, regardless of whether such claim is based upon any of the above stated reasons or otherwise. Results relate only to the samples identified above. This report shall not be reproduced except in full with written approval of Cardinal Laboratories.

Celey D. Keene, Lab Director/Quality Manager



PHONE (575) 393-2326 • 101 E. MARLAND • HOBBS, NM 88240

Notes and Definitions

| | |
|-------|---|
| QR-02 | The RPD result exceeded the QC control limits; however, both percent recoveries were acceptable. Sample results for the QC batch were accepted based on percent recoveries and completeness of QC data. |
| QM-07 | The spike recovery was outside acceptance limits for the MS and/or MSD. The batch was accepted based on acceptable LCS recovery. |
| ND | Analyte NOT DETECTED at or above the reporting limit |
| RPD | Relative Percent Difference |
| ** | Samples not received at proper temperature of 6°C or below. |
| *** | Insufficient time to reach temperature. |
| - | Chloride by SM4500C-B does not require samples be received at or below 6°C Samples reported on an as received basis (wet) unless otherwise noted on report |

Cardinal Laboratories

*=Accredited Analyte

PLEASE NOTE: Liability and Damages. Cardinal's liability and client's exclusive remedy for any claim arising, whether based in contract or tort, shall be limited to the amount paid by client for analysis. All claims, including those for negligence and any other cause whatsoever shall be deemed waived unless made in writing and received by Cardinal within thirty (30) days after completion of the applicable service. In no event shall Cardinal be liable for incidental or consequential damages, including, without limitation, business interruptions, loss of use, or loss of profits incurred by client, its subsidiaries, affiliates or successors arising out of or related to the performance of the services hereunder by Cardinal, regardless of whether such claim is based upon any of the above stated reasons or otherwise. Results relate only to the samples identified above. This report shall not be reproduced except in full with written approval of Cardinal Laboratories.

Celey D. Keene, Lab Director/Quality Manager



Page 12 of 13

| |
|----------------|
| BILL TO |
| PO: |

P.O. #:

Company: Reed + Stearns

Attn: Joe Tovar

Address: PO Box
City: Lovington

State: NM Zip: 88260

Phone #:

Fax #:

| | |
|---------|----------|
| PRESERV | SAMPLING |
|---------|----------|

2

ER :
WBASE
COOL
ER :

| DATE | TIME | OTHER | ICE / | ACID | OTH |
|------|------|-------|-------|------|-----|
|------|------|-------|-------|------|-----|

| | |
|------|------|
| 2/15 | 3:01 |
| 2/15 | 3:08 |

| | |
|------|------|
| 2/15 | 3:15 |
| 2/15 | 3:15 |

| | |
|------|------|
| 2/15 | 7:10 |
| 2/15 | 1:20 |

| | |
|------|------|
| 2/15 | 1:17 |
| 2/15 | 1:07 |

| | |
|------|------|
| 2/15 | 1:11 |
|------|------|

| | |
|------|------|
| 2/15 | 1:45 |
| 8/15 | 1:49 |

not, what he wished to be secured paid by the short for the

| | |
|------------|------------|
| Phone Resi | Phone Resi |
| Ext Resi | Ext Resi |

| | |
|----------|---------|
| REMARKS: | 11/6/20 |
|----------|---------|

for

CHECKED BY: *En*

10

51 2016.7.22



Page 13 of 13

ANALYSIS REQUEST

* Cardinal cannot accept verbal change. Please for written change to (575) 202-5226



PHONE (575) 393-2326 • 101 E. MARLAND • HOBBS, NM 88240

February 23, 2017

ERIC GARCIA
REPUBLIC BACKHOE SERVICES
47 E. DICKENS RD
LOVINGTON, NM 88260

RE: SHELL ST#3

Enclosed are the results of analyses for samples received by the laboratory on 02/17/17 9:17.

Cardinal Laboratories is accredited through Texas NELAP under certificate number T104704398-16-8. Accreditation applies to drinking water, non-potable water and solid and chemical materials. All accredited analytes are denoted by an asterisk (*). For a complete list of accredited analytes and matrices visit the TCEQ website at www.tceq.texas.gov/field/qa/lab_accred_certif.html.

Cardinal Laboratories is accredited through the State of Colorado Department of Public Health and Environment for:

| | |
|------------------|------------------------------|
| Method EPA 552.2 | Haloacetic Acids (HAA-5) |
| Method EPA 524.2 | Total Trihalomethanes (TTHM) |
| Method EPA 524.4 | Regulated VOCs (V1, V2, V3) |

Accreditation applies to public drinking water matrices.

This report meets NELAP requirements and is made up of a cover page, analytical results, and a copy of the original chain-of-custody. If you have any questions concerning this report, please feel free to contact me.

Sincerely,

Celey D. Keene
Lab Director/Quality Manager



PHONE (575) 393-2326 • 101 E. MARLAND • HOBBS, NM 88240

Analytical Results For:

REPUBLIC BACKHOE SERVICES
ERIC GARCIA
47 E. DICKENS RD
LOVINGTON NM, 88260
Fax To: NONE

Received: 02/17/2017
Reported: 02/23/2017
Project Name: SHELL ST#3
Project Number: NONE GIVEN
Project Location: TATUM

Sampling Date: 02/16/2017
Sampling Type: Soil
Sampling Condition: Cool & Intact
Sample Received By: Jodi Henson

Sample ID: C 10' (H700413-01)

| BTX 8021B | | mg/kg | | Analyzed By: MS | | | | | |
|----------------|--------|-----------------|------------|-----------------|------|------------|---------------|------|-----------|
| Analyte | Result | Reporting Limit | Analyzed | Method Blank | BS | % Recovery | True Value QC | RPD | Qualifier |
| Benzene* | <0.050 | 0.050 | 02/21/2017 | ND | 2.12 | 106 | 2.00 | 3.29 | |
| Toluene* | <0.050 | 0.050 | 02/21/2017 | ND | 1.98 | 98.9 | 2.00 | 2.98 | |
| Ethylbenzene* | <0.050 | 0.050 | 02/21/2017 | ND | 1.96 | 98.2 | 2.00 | 2.35 | |
| Total Xylenes* | <0.150 | 0.150 | 02/21/2017 | ND | 5.65 | 94.1 | 6.00 | 2.87 | |
| Total BTX | <0.300 | 0.300 | 02/21/2017 | ND | | | | | |

Surrogate: 4-Bromofluorobenzene (PID) 99.0 % 73.6-140

| TPH 8015M | | mg/kg | | Analyzed By: MS | | | | | |
|--------------|--------|-----------------|------------|-----------------|-----|------------|---------------|------|-----------|
| Analyte | Result | Reporting Limit | Analyzed | Method Blank | BS | % Recovery | True Value QC | RPD | Qualifier |
| GRO C6-C10 | <10.0 | 10.0 | 02/17/2017 | ND | 182 | 90.9 | 200 | 3.52 | |
| DRO >C10-C28 | <10.0 | 10.0 | 02/17/2017 | ND | 185 | 92.5 | 200 | 8.68 | |

Surrogate: 1-Chlorooctane 84.7 % 35-147

Surrogate: 1-Chlorooctadecane 98.5 % 28-171

Sample ID: CENTER 15' (H700413-02)

| Chloride, SM4500Cl-B | | mg/kg | | Analyzed By: AC | | | | | |
|----------------------|--------|-----------------|------------|-----------------|-----|------------|---------------|------|-----------|
| Analyte | Result | Reporting Limit | Analyzed | Method Blank | BS | % Recovery | True Value QC | RPD | Qualifier |
| Chloride | 32.0 | 16.0 | 02/17/2017 | ND | 416 | 104 | 400 | 0.00 | |

Cardinal Laboratories

*=Accredited Analyte

PLEASE NOTE: Liability and Damages. Cardinal's liability and client's exclusive remedy for any claim arising, whether based in contract or tort, shall be limited to the amount paid by client for analyses. All claims, including those for negligence and any other cause whatsoever shall be deemed waived unless made in writing and received by Cardinal within thirty (30) days after completion of the applicable service. In no event shall Cardinal be liable for incidental or consequential damages, including, without limitation, business interruptions, loss of use, or loss of profits incurred by client, its subsidiaries, affiliates or successors arising out of or related to the performance of the services hereunder by Cardinal, regardless of whether such claim is based upon any of the above stated reasons or otherwise. Results relate only to the samples identified above. This report shall not be reproduced except in full with written approval of Cardinal Laboratories.

Celestine D. Keene

Celestine D. Keene, Lab Director/Quality Manager



PHONE (575) 393-2326 • 101 E. MARLAND • HOBBS, NM 88240

Notes and Definitions

| | |
|-------|---|
| QM-07 | The spike recovery was outside acceptance limits for the MS and/or MSD. The batch was accepted based on acceptable LCS recovery. |
| ND | Analyte NOT DETECTED at or above the reporting limit |
| RPD | Relative Percent Difference |
| ** | Samples not received at proper temperature of 6°C or below. |
| *** | Insufficient time to reach temperature. |
| - | Chloride by SM4500C-B does not require samples be received at or below 6°C Samples reported on an as received basis (wet) unless otherwise noted on report |

Cardinal Laboratories

*=Accredited Analyte

PLEASE NOTE: Liability and Damages. Cardinal's liability and client's exclusive remedy for any claim arising, whether based in contract or tort, shall be limited to the amount paid by client for analyses. All claims, including those for negligence and any other cause whatsoever shall be deemed waived unless made in writing and received by Cardinal within thirty (30) days after completion of the applicable service. In no event shall Cardinal be liable for incidental or consequential damages, including, without limitation, business interruptions, loss of use, or loss of profits incurred by client, its subsidiaries, affiliates or successors arising out of or related to the performance of the services hereunder by Cardinal, regardless of whether such claim is based upon any of the above stated reasons or otherwise. Results relate only to the samples identified above. This report shall not be reproduced except in full with written approval of Cardinal Laboratories.

Celey D. Keene, Lab Director/Quality Manager



CHAIN-OF-CUSTODY AND ANALYSIS REQUEST

101 East Marland, Hobbs, NM 88240
(575) 393-2326 FAX (575) 393-2476

| | | | |
|---|--|--|--|
| Company Name: Republic Backhoe Service Project Manager: Eric Garcia Address: 47 E Dickens Rd City: Lovington Phone #: 575-390-2035 State: NM Zip: 88260 Fax #: 575-396-7782 Project Owner: Reed + Stevens Project Name: Shell 87 #3 Project Location: Tatum Sampler Name: Eric Garcia | | P.O. #: Company: Reed + Stevens Attn: Joe Tower Address: Po Box City: Lovington State: NM Zip: 88260 Phone #: Fax #: | |
| Lab I.D.: H700413 Sample I.D.: | | BILL TO | |
| (G)RAB OR (C)COMP. # CONTAINERS GROUNDWATER WASTEWATER SOIL OIL SLUDGE OTHER: ACID/BASE: ICE / COOL OTHER: | | ANALYSIS REQUEST | |
| DATE TIME | | TP.H. BTEX Chloride | |
| 1 C10 2 Center 15' | | x x x | |
| 3/11/17 9:17a | | 3/16/17 12:30 3/16/17 12:30 | |
| Relinquished By: Jennie Baer Relinquished By: | | REMARKS: | |
| Delivered By: (Circle One) Sampler - UPS - Bus - Other: | | CHECKED BY: | |
| 3.82 | | 4.4 | |



PHONE (575) 393-2326 • 101 E. MARLAND • HOBBS, NM 88240

March 28, 2017

ERIC GARCIA
REPUBLIC BACKHOE SERVICES
47 E. DICKENS RD
LOVINGTON, NM 88260

RE: SHELL ST#3

Enclosed are the results of analyses for samples received by the laboratory on 03/24/17 13:00.

Cardinal Laboratories is accredited through Texas NELAP under certificate number T104704398-16-8. Accreditation applies to drinking water, non-potable water and solid and chemical materials. All accredited analytes are denoted by an asterisk (*). For a complete list of accredited analytes and matrices visit the TCEQ website at www.tceq.texas.gov/field/qa/lab_accred_certif.html.

Cardinal Laboratories is accredited through the State of Colorado Department of Public Health and Environment for:

| | |
|------------------|------------------------------|
| Method EPA 552.2 | Haloacetic Acids (HAA-5) |
| Method EPA 524.2 | Total Trihalomethanes (TTHM) |
| Method EPA 524.4 | Regulated VOCs (V1, V2, V3) |

Accreditation applies to public drinking water matrices.

This report meets NELAP requirements and is made up of a cover page, analytical results, and a copy of the original chain-of-custody. If you have any questions concerning this report, please feel free to contact me.

Sincerely,

Celey D. Keene
Lab Director/Quality Manager



PHONE (575) 393-2326 • 101 E. MARLAND • HOBBS, NM 88240

Analytical Results For:

REPUBLIC BACKHOE SERVICES
ERIC GARCIA
47 E. DICKENS RD
LOVINGTON NM, 88260
Fax To: NONE

Received: 03/24/2017
Reported: 03/28/2017
Project Name: SHELL ST#3
Project Number: NONE GIVEN
Project Location: TATUM

Sampling Date: 03/24/2017
Sampling Type: Soil
Sampling Condition: Cool & Intact
Sample Received By: Tamara Oldaker

Sample ID: NS 1 - 10 (H700785-01)

| BTEX 8021B | | mg/kg | | Analyzed By: MS | | | | | |
|----------------|--------|-----------------|------------|-----------------|------|------------|---------------|------|-----------|
| Analyte | Result | Reporting Limit | Analyzed | Method Blank | BS | % Recovery | True Value QC | RPD | Qualifier |
| Benzene* | <0.050 | 0.050 | 03/27/2017 | ND | 1.98 | 98.8 | 2.00 | 5.25 | |
| Toluene* | 0.072 | 0.050 | 03/27/2017 | ND | 1.91 | 95.7 | 2.00 | 5.03 | |
| Ethylbenzene* | <0.050 | 0.050 | 03/27/2017 | ND | 1.91 | 95.5 | 2.00 | 4.71 | |
| Total Xylenes* | <0.150 | 0.150 | 03/27/2017 | ND | 5.44 | 90.7 | 6.00 | 4.67 | |
| Total BTEX | <0.300 | 0.300 | 03/27/2017 | ND | | | | | |

Surrogate: 4-Bromofluorobenzene (PID) 98.2 % 72-148

| Chloride, SM4500Cl-B | | mg/kg | | Analyzed By: HM | | | | | |
|----------------------|--------|-----------------|------------|-----------------|-----|------------|---------------|------|-----------|
| Analyte | Result | Reporting Limit | Analyzed | Method Blank | BS | % Recovery | True Value QC | RPD | Qualifier |
| Chloride | <16.0 | 16.0 | 03/27/2017 | ND | 432 | 108 | 400 | 3.77 | |

| TPH 8015M | | mg/kg | | Analyzed By: MS | | | | | |
|--------------|--------|-----------------|------------|-----------------|-----|------------|---------------|-------|-----------|
| Analyte | Result | Reporting Limit | Analyzed | Method Blank | BS | % Recovery | True Value QC | RPD | Qualifier |
| GRO C6-C10 | <10.0 | 10.0 | 03/27/2017 | ND | 181 | 90.6 | 200 | 0.163 | |
| DRO >C10-C28 | <10.0 | 10.0 | 03/27/2017 | ND | 189 | 94.5 | 200 | 0.743 | |

Surrogate: 1-Chlorooctane 89.9 % 25.1-158

Surrogate: 1-Chlorooctadecane 93.7 % 26.8-170

Cardinal Laboratories

*=Accredited Analyte

PLEASE NOTE: Liability and Damages. Cardinal's liability and client's exclusive remedy for any claim arising, whether based in contract or tort, shall be limited to the amount paid by client for analyses. All claims, including those for negligence and any other cause whatsoever shall be deemed waived unless made in writing and received by Cardinal within thirty (30) days after completion of the applicable service. In no event shall Cardinal be liable for incidental or consequential damages, including, without limitation, business interruptions, loss of use, or loss of profits incurred by client, its subsidiaries, affiliates or successors arising out of or related to the performance of the services hereunder by Cardinal, regardless of whether such claim is based upon any of the above stated reasons or otherwise. Results relate only to the samples identified above. This report shall not be reproduced except in full with written approval of Cardinal Laboratories.

Celey D. Keene, Lab Director/Quality Manager



PHONE (575) 393-2326 • 101 E. MARLAND • HOBBS, NM 88240

Analytical Results For:

REPUBLIC BACKHOE SERVICES
ERIC GARCIA
47 E. DICKENS RD
LOVINGTON NM, 88260
Fax To: NONE

Received: 03/24/2017
Reported: 03/28/2017
Project Name: SHELL ST#3
Project Number: NONE GIVEN
Project Location: TATUM

Sampling Date: 03/24/2017
Sampling Type: Soil
Sampling Condition: Cool & Intact
Sample Received By: Tamara Oldaker

Sample ID: NS 2 - 10 (H700785-02)

| BTEX 8021B | | mg/kg | | Analyzed By: MS | | | | | |
|----------------|--------|-----------------|------------|-----------------|------|------------|---------------|------|-----------|
| Analyte | Result | Reporting Limit | Analyzed | Method Blank | BS | % Recovery | True Value QC | RPD | Qualifier |
| Benzene* | <0.050 | 0.050 | 03/27/2017 | ND | 1.98 | 98.8 | 2.00 | 5.25 | |
| Toluene* | <0.050 | 0.050 | 03/27/2017 | ND | 1.91 | 95.7 | 2.00 | 5.03 | |
| Ethylbenzene* | <0.050 | 0.050 | 03/27/2017 | ND | 1.91 | 95.5 | 2.00 | 4.71 | |
| Total Xylenes* | <0.150 | 0.150 | 03/27/2017 | ND | 5.44 | 90.7 | 6.00 | 4.67 | |
| Total BTEX | <0.300 | 0.300 | 03/27/2017 | ND | | | | | |

Surrogate: 4-Bromofluorobenzene (PID) 98.4 % 72-148

| Chloride, SM4500Cl-B | | mg/kg | | Analyzed By: HM | | | | | |
|----------------------|--------|-----------------|------------|-----------------|-----|------------|---------------|------|-----------|
| Analyte | Result | Reporting Limit | Analyzed | Method Blank | BS | % Recovery | True Value QC | RPD | Qualifier |
| Chloride | <16.0 | 16.0 | 03/27/2017 | ND | 432 | 108 | 400 | 3.77 | |

| TPH 8015M | | mg/kg | | Analyzed By: MS | | | | | |
|--------------|--------|-----------------|------------|-----------------|-----|------------|---------------|-------|-----------|
| Analyte | Result | Reporting Limit | Analyzed | Method Blank | BS | % Recovery | True Value QC | RPD | Qualifier |
| GRO C6-C10 | <10.0 | 10.0 | 03/27/2017 | ND | 181 | 90.6 | 200 | 0.163 | |
| DRO >C10-C28 | <10.0 | 10.0 | 03/27/2017 | ND | 189 | 94.5 | 200 | 0.743 | |

Surrogate: 1-Chlorooctane 84.4 % 25.1-158

Surrogate: 1-Chlorooctadecane 79.0 % 26.8-170

Cardinal Laboratories

*=Accredited Analyte

PLEASE NOTE: Liability and Damages. Cardinal's liability and client's exclusive remedy for any claim arising, whether based in contract or tort, shall be limited to the amount paid by client for analyses. All claims, including those for negligence and any other cause whatsoever shall be deemed waived unless made in writing and received by Cardinal within thirty (30) days after completion of the applicable service. In no event shall Cardinal be liable for incidental or consequential damages, including, without limitation, business interruptions, loss of use, or loss of profits incurred by client, its subsidiaries, affiliates or successors arising out of or related to the performance of the services hereunder by Cardinal, regardless of whether such claim is based upon any of the above stated reasons or otherwise. Results relate only to the samples identified above. This report shall not be reproduced except in full with written approval of Cardinal Laboratories.

Celey D. Keene, Lab Director/Quality Manager



PHONE (575) 393-2326 * 101 E. MARLAND * HOBBS, NM 88240

Analytical Results For:

REPUBLIC BACKHOE SERVICES
ERIC GARCIA
47 E. DICKENS RD
LOVINGTON NM, 88260
Fax To: NONE

Received: 03/24/2017
Reported: 03/28/2017
Project Name: SHELL ST#3
Project Number: NONE GIVEN
Project Location: TATUM

Sampling Date: 03/24/2017
Sampling Type: Soil
Sampling Condition: Cool & Intact
Sample Received By: Tamara Oldaker

Sample ID: NS 3 - 10 (H700785-03)

| BTEX 8021B | | mg/kg | | Analyzed By: MS | | | | | |
|----------------|--------|-----------------|------------|-----------------|------|------------|---------------|------|-----------|
| Analyte | Result | Reporting Limit | Analyzed | Method Blank | BS | % Recovery | True Value QC | RPD | Qualifier |
| Benzene* | <0.050 | 0.050 | 03/27/2017 | ND | 1.98 | 98.8 | 2.00 | 5.25 | |
| Toluene* | <0.050 | 0.050 | 03/27/2017 | ND | 1.91 | 95.7 | 2.00 | 5.03 | |
| Ethylbenzene* | <0.050 | 0.050 | 03/27/2017 | ND | 1.91 | 95.5 | 2.00 | 4.71 | |
| Total Xylenes* | <0.150 | 0.150 | 03/27/2017 | ND | 5.44 | 90.7 | 6.00 | 4.67 | |
| Total BTEX | <0.300 | 0.300 | 03/27/2017 | ND | | | | | |

Surrogate: 4-Bromofluorobenzene (PID) 97.6 % 72-148

| Chloride, SM4500Cl-B | | mg/kg | | Analyzed By: HM | | | | | |
|----------------------|--------|-----------------|------------|-----------------|-----|------------|---------------|------|-----------|
| Analyte | Result | Reporting Limit | Analyzed | Method Blank | BS | % Recovery | True Value QC | RPD | Qualifier |
| Chloride | <16.0 | 16.0 | 03/27/2017 | ND | 432 | 108 | 400 | 3.77 | |

| TPH 8015M | | mg/kg | | Analyzed By: MS | | | | | |
|--------------|--------|-----------------|------------|-----------------|-----|------------|---------------|-------|-----------|
| Analyte | Result | Reporting Limit | Analyzed | Method Blank | BS | % Recovery | True Value QC | RPD | Qualifier |
| GRO C6-C10 | <10.0 | 10.0 | 03/27/2017 | ND | 181 | 90.6 | 200 | 0.163 | |
| DRO >C10-C28 | <10.0 | 10.0 | 03/27/2017 | ND | 189 | 94.5 | 200 | 0.743 | |

Surrogate: 1-Chlorooctane 86.8 % 25.1-158

Surrogate: 1-Chlorooctadecane 92.7 % 26.8-170

Cardinal Laboratories

*=Accredited Analyte

PLEASE NOTE: Liability and Damages. Cardinal's liability and client's exclusive remedy for any claim arising, whether based in contract or tort, shall be limited to the amount paid by client for analyses. All claims, including those for negligence and any other cause whatsoever shall be deemed waived unless made in writing and received by Cardinal within thirty (30) days after completion of the applicable service. In no event shall Cardinal be liable for incidental or consequential damages, including, without limitation, business interruptions, loss of use, or loss of profits incurred by client, its subsidiaries, affiliates or successors arising out of or related to the performance of the services hereunder by Cardinal, regardless of whether such claim is based upon any of the above stated reasons or otherwise. Results relate only to the samples identified above. This report shall not be reproduced except in full with written approval of Cardinal Laboratories.

Celey D. Keene, Lab Director/Quality Manager



PHONE (575) 393-2326 • 101 E. MARLAND • HOBBS, NM 88240

Analytical Results For:

REPUBLIC BACKHOE SERVICES
ERIC GARCIA
47 E. DICKENS RD
LOVINGTON NM, 88260
Fax To: NONE

Received: 03/24/2017
Reported: 03/28/2017
Project Name: SHELL ST#3
Project Number: NONE GIVEN
Project Location: TATUM

Sampling Date: 03/24/2017
Sampling Type: Soil
Sampling Condition: Cool & Intact
Sample Received By: Tamara Oldaker

Sample ID: NS 4 - 10 (H700785-04)

| BTX 8021B | | mg/kg | | Analyzed By: MS | | | | | |
|----------------|--------|-----------------|------------|-----------------|------|------------|---------------|------|-----------|
| Analyte | Result | Reporting Limit | Analyzed | Method Blank | BS | % Recovery | True Value QC | RPD | Qualifier |
| Benzene* | <0.050 | 0.050 | 03/27/2017 | ND | 1.98 | 98.8 | 2.00 | 5.25 | |
| Toluene* | <0.050 | 0.050 | 03/27/2017 | ND | 1.91 | 95.7 | 2.00 | 5.03 | |
| Ethylbenzene* | <0.050 | 0.050 | 03/27/2017 | ND | 1.91 | 95.5 | 2.00 | 4.71 | |
| Total Xylenes* | <0.150 | 0.150 | 03/27/2017 | ND | 5.44 | 90.7 | 6.00 | 4.67 | |
| Total BTX | <0.300 | 0.300 | 03/27/2017 | ND | | | | | |

Surrogate: 4-Bromofluorobenzene (PID) 98.8 % 72-148

| Chloride, SM4500Cl-B | | mg/kg | | Analyzed By: HM | | | | | |
|----------------------|--------|-----------------|------------|-----------------|-----|------------|---------------|------|-----------|
| Analyte | Result | Reporting Limit | Analyzed | Method Blank | BS | % Recovery | True Value QC | RPD | Qualifier |
| Chloride | <16.0 | 16.0 | 03/27/2017 | ND | 432 | 108 | 400 | 3.77 | |

| TPH 8015M | | mg/kg | | Analyzed By: MS | | | | | |
|--------------|--------|-----------------|------------|-----------------|-----|------------|---------------|-------|-----------|
| Analyte | Result | Reporting Limit | Analyzed | Method Blank | BS | % Recovery | True Value QC | RPD | Qualifier |
| GRO C6-C10 | <10.0 | 10.0 | 03/27/2017 | ND | 181 | 90.6 | 200 | 0.163 | |
| DRO >C10-C28 | <10.0 | 10.0 | 03/27/2017 | ND | 189 | 94.5 | 200 | 0.743 | |

Surrogate: 1-Chlorooctane 85.5 % 25.1-158

Surrogate: 1-Chlorooctadecane 86.5 % 26.8-170

Cardinal Laboratories

*=Accredited Analyte

PLEASE NOTE: Liability and Damages. Cardinal's liability and client's exclusive remedy for any claim arising, whether based in contract or tort, shall be limited to the amount paid by client for analyses. All claims, including those for negligence and any other cause whatsoever shall be deemed waived unless made in writing and received by Cardinal within thirty (30) days after completion of the applicable service. In no event shall Cardinal be liable for incidental or consequential damages, including, without limitation, business interruptions, loss of use, or loss of profits incurred by client, its subsidiaries, affiliates or successors arising out of or related to the performance of the services hereunder by Cardinal, regardless of whether such claim is based upon any of the above stated reasons or otherwise. Results relate only to the samples identified above. This report shall not be reproduced except in full with written approval of Cardinal Laboratories.

Celey D. Keene, Lab Director/Quality Manager



PHONE (575) 393-2326 • 101 E. MARLAND • HOBBS, NM 88240

Analytical Results For:

REPUBLIC BACKHOE SERVICES
ERIC GARCIA
47 E. DICKENS RD
LOVINGTON NM, 88260
Fax To: NONE

Received: 03/24/2017
Reported: 03/28/2017
Project Name: SHELL ST#3
Project Number: NONE GIVEN
Project Location: TATUM

Sampling Date: 03/23/2017
Sampling Type: Soil
Sampling Condition: Cool & Intact
Sample Received By: Tamara Oldaker

Sample ID: N 20 (H700785-05)

| BTEX 8021B | | mg/kg | | Analyzed By: MS | | | | | | |
|----------------|--------|-----------------|------------|-----------------|------|------------|---------------|------|-----------|--|
| Analyte | Result | Reporting Limit | Analyzed | Method Blank | BS | % Recovery | True Value QC | RPD | Qualifier | |
| Benzene* | <0.050 | 0.050 | 03/27/2017 | ND | 1.98 | 98.8 | 2.00 | 5.25 | | |
| Toluene* | <0.050 | 0.050 | 03/27/2017 | ND | 1.91 | 95.7 | 2.00 | 5.03 | | |
| Ethylbenzene* | <0.050 | 0.050 | 03/27/2017 | ND | 1.91 | 95.5 | 2.00 | 4.71 | | |
| Total Xylenes* | <0.150 | 0.150 | 03/27/2017 | ND | 5.44 | 90.7 | 6.00 | 4.67 | | |
| Total BTEX | <0.300 | 0.300 | 03/27/2017 | ND | | | | | | |

Surrogate: 4-Bromofluorobenzene (PID) 98.2 % 72-148

| Chloride, SM4500Cl-B | | mg/kg | | Analyzed By: HM | | | | | | |
|----------------------|--------|-----------------|------------|-----------------|-----|------------|---------------|------|-----------|--|
| Analyte | Result | Reporting Limit | Analyzed | Method Blank | BS | % Recovery | True Value QC | RPD | Qualifier | |
| Chloride | <16.0 | 16.0 | 03/27/2017 | ND | 432 | 108 | 400 | 3.77 | | |

| TPH 8015M | | mg/kg | | Analyzed By: MS | | | | | | |
|--------------|--------|-----------------|------------|-----------------|-----|------------|---------------|-------|-----------|--|
| Analyte | Result | Reporting Limit | Analyzed | Method Blank | BS | % Recovery | True Value QC | RPD | Qualifier | |
| GRO C6-C10 | <10.0 | 10.0 | 03/27/2017 | ND | 181 | 90.6 | 200 | 0.163 | | |
| DRO >C10-C28 | <10.0 | 10.0 | 03/27/2017 | ND | 189 | 94.5 | 200 | 0.743 | | |

Surrogate: 1-Chlorooctane 91.9 % 25.1-158

Surrogate: 1-Chlorooctadecane 94.4 % 26.8-170

Cardinal Laboratories

*=Accredited Analyte

PLEASE NOTE: Liability and Damages. Cardinal's liability and client's exclusive remedy for any claim arising, whether based in contract or tort, shall be limited to the amount paid by client for analyses. All claims, including those for negligence and any other cause whatsoever shall be deemed waived unless made in writing and received by Cardinal within thirty (30) days after completion of the applicable service. In no event shall Cardinal be liable for incidental or consequential damages, including, without limitation, business interruptions, loss of use, or loss of profits incurred by client, its subsidiaries, affiliates or successors arising out of or related to the performance of the services hereunder by Cardinal, regardless of whether such claim is based upon any of the above stated reasons or otherwise. Results relate only to the samples identified above. This report shall not be reproduced except in full with written approval of Cardinal Laboratories.

Celey D. Keene, Lab Director/Quality Manager



PHONE (575) 393-2326 • 101 E. MARLAND • HOBBS, NM 88240

Analytical Results For:

REPUBLIC BACKHOE SERVICES
ERIC GARCIA
47 E. DICKENS RD
LOVINGTON NM, 88260
Fax To: NONE

Received: 03/24/2017
Reported: 03/28/2017
Project Name: SHELL ST#3
Project Number: NONE GIVEN
Project Location: TATUM

Sampling Date: 03/23/2017
Sampling Type: Soil
Sampling Condition: Cool & Intact
Sample Received By: Tamara Oldaker

Sample ID: NE 20 (H700785-06)

| BTEX 8021B | | mg/kg | | Analyzed By: MS | | | | | |
|----------------|--------|-----------------|------------|-----------------|------|------------|---------------|------|-----------|
| Analyte | Result | Reporting Limit | Analyzed | Method Blank | BS | % Recovery | True Value QC | RPD | Qualifier |
| Benzene* | <0.050 | 0.050 | 03/27/2017 | ND | 1.98 | 98.8 | 2.00 | 5.25 | |
| Toluene* | <0.050 | 0.050 | 03/27/2017 | ND | 1.91 | 95.7 | 2.00 | 5.03 | |
| Ethylbenzene* | <0.050 | 0.050 | 03/27/2017 | ND | 1.91 | 95.5 | 2.00 | 4.71 | |
| Total Xylenes* | <0.150 | 0.150 | 03/27/2017 | ND | 5.44 | 90.7 | 6.00 | 4.67 | |
| Total BTEX | <0.300 | 0.300 | 03/27/2017 | ND | | | | | |

Surrogate: 4-Bromofluorobenzene (PID) 98.4 % 72-148

| Chloride, SM4500Cl-B | | mg/kg | | Analyzed By: HM | | | | | |
|----------------------|--------|-----------------|------------|-----------------|-----|------------|---------------|------|-----------|
| Analyte | Result | Reporting Limit | Analyzed | Method Blank | BS | % Recovery | True Value QC | RPD | Qualifier |
| Chloride | <16.0 | 16.0 | 03/27/2017 | ND | 432 | 108 | 400 | 3.77 | |

| TPH 8015M | | mg/kg | | Analyzed By: MS | | | | | |
|--------------|--------|-----------------|------------|-----------------|-----|------------|---------------|-------|-----------|
| Analyte | Result | Reporting Limit | Analyzed | Method Blank | BS | % Recovery | True Value QC | RPD | Qualifier |
| GRO C6-C10 | <10.0 | 10.0 | 03/27/2017 | ND | 181 | 90.6 | 200 | 0.163 | |
| DRO >C10-C28 | <10.0 | 10.0 | 03/27/2017 | ND | 189 | 94.5 | 200 | 0.743 | |

Surrogate: 1-Chlorooctane 88.6 % 25.1-158

Surrogate: 1-Chlorooctadecane 91.7 % 26.8-170

Cardinal Laboratories

*=Accredited Analyte

PLEASE NOTE: Liability and Damages. Cardinal's liability and client's exclusive remedy for any claim arising, whether based in contract or tort, shall be limited to the amount paid by client for analyses. All claims, including those for negligence and any other cause whatsoever shall be deemed waived unless made in writing and received by Cardinal within thirty (30) days after completion of the applicable service. In no event shall Cardinal be liable for incidental or consequential damages, including, without limitation, business interruptions, loss of use, or loss of profits incurred by client, its subsidiaries, affiliates or successors arising out of or related to the performance of the services hereunder by Cardinal, regardless of whether such claim is based upon any of the above stated reasons or otherwise. Results relate only to the samples identified above. This report shall not be reproduced except in full with written approval of Cardinal Laboratories.

Celey D. Keene, Lab Director/Quality Manager



PHONE (575) 393-2326 • 101 E. MARLAND • HOBBS, NM 88240

Analytical Results For:

REPUBLIC BACKHOE SERVICES
ERIC GARCIA
47 E. DICKENS RD
LOVINGTON NM, 88260
Fax To: NONE

Received: 03/24/2017
Reported: 03/28/2017
Project Name: SHELL ST#3
Project Number: NONE GIVEN
Project Location: TATUM

Sampling Date: 03/23/2017
Sampling Type: Soil
Sampling Condition: Cool & Intact
Sample Received By: Tamara Oldaker

Sample ID: E 20 (H700785-07)

| BTEX 8021B | | mg/kg | | Analyzed By: MS | | | | | | |
|----------------|--------|-----------------|------------|-----------------|------|------------|---------------|------|-----------|--|
| Analyte | Result | Reporting Limit | Analyzed | Method Blank | BS | % Recovery | True Value QC | RPD | Qualifier | |
| Benzene* | <0.050 | 0.050 | 03/27/2017 | ND | 1.98 | 98.8 | 2.00 | 5.25 | | |
| Toluene* | <0.050 | 0.050 | 03/27/2017 | ND | 1.91 | 95.7 | 2.00 | 5.03 | | |
| Ethylbenzene* | <0.050 | 0.050 | 03/27/2017 | ND | 1.91 | 95.5 | 2.00 | 4.71 | | |
| Total Xylenes* | <0.150 | 0.150 | 03/27/2017 | ND | 5.44 | 90.7 | 6.00 | 4.67 | | |
| Total BTEX | <0.300 | 0.300 | 03/27/2017 | ND | | | | | | |

Surrogate: 4-Bromofluorobenzene (PID) 98.4 % 72-148

| Chloride, SM4500Cl-B | | mg/kg | | Analyzed By: HM | | | | | | |
|----------------------|--------|-----------------|------------|-----------------|-----|------------|---------------|------|-----------|--|
| Analyte | Result | Reporting Limit | Analyzed | Method Blank | BS | % Recovery | True Value QC | RPD | Qualifier | |
| Chloride | <16.0 | 16.0 | 03/27/2017 | ND | 432 | 108 | 400 | 3.77 | | |

| TPH 8015M | | mg/kg | | Analyzed By: MS | | | | | | |
|--------------|--------|-----------------|------------|-----------------|-----|------------|---------------|-------|-----------|--|
| Analyte | Result | Reporting Limit | Analyzed | Method Blank | BS | % Recovery | True Value QC | RPD | Qualifier | |
| GRO C6-C10 | <10.0 | 10.0 | 03/27/2017 | ND | 181 | 90.6 | 200 | 0.163 | | |
| DRO >C10-C28 | <10.0 | 10.0 | 03/27/2017 | ND | 189 | 94.5 | 200 | 0.743 | | |

Surrogate: 1-Chlorooctane 94.0 % 25.1-158

Surrogate: 1-Chlorooctadecane 93.6 % 26.8-170

Cardinal Laboratories

*=Accredited Analyte

PLEASE NOTE: Liability and Damages. Cardinal's liability and client's exclusive remedy for any claim arising, whether based in contract or tort, shall be limited to the amount paid by client for analyses. All claims, including those for negligence and any other cause whatsoever shall be deemed waived unless made in writing and received by Cardinal within thirty (30) days after completion of the applicable service. In no event shall Cardinal be liable for incidental or consequential damages, including, without limitation, business interruptions, loss of use, or loss of profits incurred by client, its subsidiaries, affiliates or successors arising out of or related to the performance of the service hereunder by Cardinal, regardless of whether such claim is based upon any of the above stated reasons or otherwise. Results relate only to the samples identified above. This report shall not be reproduced except in full with written approval of Cardinal Laboratories.

Celey D. Keene, Lab Director/Quality Manager



PHONE (575) 393-2326 • 101 E. MARLAND • HOBBS, NM 88240

Analytical Results For:

REPUBLIC BACKHOE SERVICES
ERIC GARCIA
47 E. DICKENS RD
LOVINGTON NM, 88260
Fax To: NONE

Received: 03/24/2017
Reported: 03/28/2017
Project Name: SHELL ST#3
Project Number: NONE GIVEN
Project Location: TATUM

Sampling Date: 03/23/2017
Sampling Type: Soil
Sampling Condition: Cool & Intact
Sample Received By: Tamara Oldaker

Sample ID: SE 20 (H700785-08)

| BTEX 8021B | | | mg/kg | | Analyzed By: MS | | | | |
|----------------|--------|-----------------|------------|--------------|-----------------|------------|---------------|------|-----------|
| Analyte | Result | Reporting Limit | Analyzed | Method Blank | BS | % Recovery | True Value QC | RPD | Qualifier |
| Benzene* | <0.050 | 0.050 | 03/27/2017 | ND | 1.98 | 98.8 | 2.00 | 5.25 | |
| Toluene* | <0.050 | 0.050 | 03/27/2017 | ND | 1.91 | 95.7 | 2.00 | 5.03 | |
| Ethylbenzene* | <0.050 | 0.050 | 03/27/2017 | ND | 1.91 | 95.5 | 2.00 | 4.71 | |
| Total Xylenes* | <0.150 | 0.150 | 03/27/2017 | ND | 5.44 | 90.7 | 6.00 | 4.67 | |
| Total BTEX | <0.300 | 0.300 | 03/27/2017 | ND | | | | | |

Surrogate: 4-Bromofluorobenzene (PID) 98.9 % 72-148

| Chloride, SM4500Cl-B | | | mg/kg | | Analyzed By: HM | | | | |
|----------------------|--------|-----------------|------------|--------------|-----------------|------------|---------------|------|-----------|
| Analyte | Result | Reporting Limit | Analyzed | Method Blank | BS | % Recovery | True Value QC | RPD | Qualifier |
| Chloride | <16.0 | 16.0 | 03/27/2017 | ND | 432 | 108 | 400 | 3.77 | |

| TPH 8015M | | | mg/kg | | Analyzed By: MS | | | | |
|--------------|--------|-----------------|------------|--------------|-----------------|------------|---------------|-------|-----------|
| Analyte | Result | Reporting Limit | Analyzed | Method Blank | BS | % Recovery | True Value QC | RPD | Qualifier |
| GRO C6-C10 | <10.0 | 10.0 | 03/27/2017 | ND | 181 | 90.6 | 200 | 0.163 | |
| DRO >C10-C28 | <10.0 | 10.0 | 03/27/2017 | ND | 189 | 94.5 | 200 | 0.743 | |

Surrogate: 1-Chlorooctane 85.0 % 25.1-158

Surrogate: 1-Chlorooctadecane 86.2 % 26.8-170

Cardinal Laboratories

*=Accredited Analyte

PLEASE NOTE: Liability and Damages. Cardinal's liability and client's exclusive remedy for any claim arising, whether based in contract or tort, shall be limited to the amount paid by client for analyses. All claims, including those for negligence and any other cause whatsoever shall be deemed waived unless made in writing and received by Cardinal within thirty (30) days after completion of the applicable service. In no event shall Cardinal be liable for incidental or consequential damages, including, without limitation, business interruptions, loss of use, or loss of profits incurred by client, its subsidiaries, affiliates or successors arising out of or related to the performance of the services hereunder by Cardinal, regardless of whether such claim is based upon any of the above stated reasons or otherwise. Results relate only to the samples identified above. This report shall not be reproduced except in full with written approval of Cardinal Laboratories.

Celey D. Keene, Lab Director/Quality Manager



PHONE (575) 393-2326 • 101 E. MARLAND • HOBBS, NM 88240

Analytical Results For:

REPUBLIC BACKHOE SERVICES
ERIC GARCIA
47 E. DICKENS RD
LOVINGTON NM, 88260
Fax To: NONE

Received: 03/24/2017
Reported: 03/28/2017
Project Name: SHELL ST#3
Project Number: NONE GIVEN
Project Location: TATUM

Sampling Date: 03/23/2017
Sampling Type: Soil
Sampling Condition: Cool & Intact
Sample Received By: Tamara Oldaker

Sample ID: S 20 (H700785-09)

| BTEX 8021B | | mg/kg | | Analyzed By: MS | | | | | | |
|----------------|--------|-----------------|------------|-----------------|------|------------|---------------|------|-----------|--|
| Analyte | Result | Reporting Limit | Analyzed | Method Blank | BS | % Recovery | True Value QC | RPD | Qualifier | |
| Benzene* | <0.050 | 0.050 | 03/27/2017 | ND | 1.98 | 98.8 | 2.00 | 5.25 | | |
| Toluene* | <0.050 | 0.050 | 03/27/2017 | ND | 1.91 | 95.7 | 2.00 | 5.03 | | |
| Ethylbenzene* | <0.050 | 0.050 | 03/27/2017 | ND | 1.91 | 95.5 | 2.00 | 4.71 | | |
| Total Xylenes* | <0.150 | 0.150 | 03/27/2017 | ND | 5.44 | 90.7 | 6.00 | 4.67 | | |
| Total BTEX | <0.300 | 0.300 | 03/27/2017 | ND | | | | | | |

Surrogate: 4-Bromofluorobenzene (PID) 98.8 % 72-148

| Chloride, SM4500Cl-B | | mg/kg | | Analyzed By: HM | | | | | | |
|----------------------|--------|-----------------|------------|-----------------|-----|------------|---------------|------|-----------|--|
| Analyte | Result | Reporting Limit | Analyzed | Method Blank | BS | % Recovery | True Value QC | RPD | Qualifier | |
| Chloride | <16.0 | 16.0 | 03/27/2017 | ND | 432 | 108 | 400 | 3.77 | | |

| TPH 8015M | | mg/kg | | Analyzed By: MS | | | | | | |
|--------------|--------|-----------------|------------|-----------------|-----|------------|---------------|-------|-----------|--|
| Analyte | Result | Reporting Limit | Analyzed | Method Blank | BS | % Recovery | True Value QC | RPD | Qualifier | |
| GRO C6-C10 | <10.0 | 10.0 | 03/27/2017 | ND | 181 | 90.6 | 200 | 0.163 | | |
| DRO >C10-C28 | <10.0 | 10.0 | 03/27/2017 | ND | 189 | 94.5 | 200 | 0.743 | | |

Surrogate: 1-Chlorooctane 90.6 % 25.1-158

Surrogate: 1-Chlorooctadecane 92.5 % 26.8-170

Cardinal Laboratories

*=Accredited Analyte

PLEASE NOTE: Liability and Damages. Cardinal's liability and client's exclusive remedy for any claim arising, whether based in contract or tort, shall be limited to the amount paid by client for analyses. All claims, including those for negligence and any other cause whatsoever shall be deemed waived unless made in writing and received by Cardinal within thirty (30) days after completion of the applicable service. In no event shall Cardinal be liable for incidental or consequential damages, including, without limitation, business interruptions, loss of use, or loss of profits incurred by client, its subsidiaries, affiliates or successors arising out of or related to the performance of the services hereunder by Cardinal, regardless of whether such claim is based upon any of the above stated reasons or otherwise. Results relate only to the samples identified above. This report shall not be reproduced except in full with written approval of Cardinal Laboratories.

Celey D. Keene, Lab Director/Quality Manager



PHONE (575) 393-2326 • 101 E. MARLAND • HOBBS, NM 88240

Analytical Results For:

REPUBLIC BACKHOE SERVICES
ERIC GARCIA
47 E. DICKENS RD
LOVINGTON NM, 88260
Fax To: NONE

Received: 03/24/2017
Reported: 03/28/2017
Project Name: SHELL ST#3
Project Number: NONE GIVEN
Project Location: TATUM

Sampling Date: 03/23/2017
Sampling Type: Soil
Sampling Condition: Cool & Intact
Sample Received By: Tamara Oldaker

Sample ID: SW 20 (H700785-10)

| BTEX 8021B | | mg/kg | | Analyzed By: MS | | | | | | |
|----------------|--------|-----------------|------------|-----------------|------|------------|---------------|------|-----------|--|
| Analyte | Result | Reporting Limit | Analyzed | Method Blank | BS | % Recovery | True Value QC | RPD | Qualifier | |
| Benzene* | <0.050 | 0.050 | 03/27/2017 | ND | 1.98 | 98.8 | 2.00 | 5.25 | | |
| Toluene* | <0.050 | 0.050 | 03/27/2017 | ND | 1.91 | 95.7 | 2.00 | 5.03 | | |
| Ethylbenzene* | <0.050 | 0.050 | 03/27/2017 | ND | 1.91 | 95.5 | 2.00 | 4.71 | | |
| Total Xylenes* | <0.150 | 0.150 | 03/27/2017 | ND | 5.44 | 90.7 | 6.00 | 4.67 | | |
| Total BTEX | <0.300 | 0.300 | 03/27/2017 | ND | | | | | | |

Surrogate: 4-Bromofluorobenzene (PID) 98.8 % 72-148

| Chloride, SM4500Cl-B | | mg/kg | | Analyzed By: HM | | | | | | |
|----------------------|--------|-----------------|------------|-----------------|-----|------------|---------------|------|-----------|--|
| Analyte | Result | Reporting Limit | Analyzed | Method Blank | BS | % Recovery | True Value QC | RPD | Qualifier | |
| Chloride | <16.0 | 16.0 | 03/27/2017 | ND | 432 | 108 | 400 | 3.77 | | |

| TPH 8015M | | mg/kg | | Analyzed By: MS | | | | | | |
|--------------|--------|-----------------|------------|-----------------|-----|------------|---------------|-------|-----------|--|
| Analyte | Result | Reporting Limit | Analyzed | Method Blank | BS | % Recovery | True Value QC | RPD | Qualifier | |
| GRO C6-C10 | <10.0 | 10.0 | 03/27/2017 | ND | 181 | 90.6 | 200 | 0.163 | | |
| DRO >C10-C28 | <10.0 | 10.0 | 03/27/2017 | ND | 189 | 94.5 | 200 | 0.743 | | |

Surrogate: 1-Chlorooctane 88.6 % 25.1-158

Surrogate: 1-Chlorooctadecane 92.4 % 26.8-170

Cardinal Laboratories

*=Accredited Analyte

PLEASE NOTE: Liability and Damages. Cardinal's liability and client's exclusive remedy for any claim arising, whether based in contract or tort, shall be limited to the amount paid by client for analyses. All claims, including those for negligence and any other cause whatsoever shall be deemed waived unless made in writing and received by Cardinal within thirty (30) days after completion of the applicable service. In no event shall Cardinal be liable for incidental or consequential damages, including, without limitation, business interruptions, loss of use, or loss of profits incurred by client, its subsidiaries, affiliates or successors arising out of or related to the performance of the services hereunder by Cardinal, regardless of whether such claim is based upon any of the above stated reasons or otherwise. Results relate only to the samples identified above. This report shall not be reproduced except in full with written approval of Cardinal Laboratories.

Celey D. Keene, Lab Director/Quality Manager



PHONE (575) 393-2326 • 101 E. MARLAND • HOBBS, NM 88240

Analytical Results For:

REPUBLIC BACKHOE SERVICES
ERIC GARCIA
47 E. DICKENS RD
LOVINGTON NM, 88260
Fax To: NONE

Received: 03/24/2017
Reported: 03/28/2017
Project Name: SHELL ST#3
Project Number: NONE GIVEN
Project Location: TATUM

Sampling Date: 03/23/2017
Sampling Type: Soil
Sampling Condition: Cool & Intact
Sample Received By: Tamara Oldaker

Sample ID: W 20 (H700785-11)

| BTX 8021B | | mg/kg | | Analyzed By: MS | | | | | |
|----------------|--------|-----------------|------------|-----------------|------|------------|---------------|------|-----------|
| Analyte | Result | Reporting Limit | Analyzed | Method Blank | BS | % Recovery | True Value QC | RPD | Qualifier |
| Benzene* | <0.050 | 0.050 | 03/27/2017 | ND | 1.98 | 98.8 | 2.00 | 5.25 | |
| Toluene* | <0.050 | 0.050 | 03/27/2017 | ND | 1.91 | 95.7 | 2.00 | 5.03 | |
| Ethylbenzene* | <0.050 | 0.050 | 03/27/2017 | ND | 1.91 | 95.5 | 2.00 | 4.71 | |
| Total Xylenes* | <0.150 | 0.150 | 03/27/2017 | ND | 5.44 | 90.7 | 6.00 | 4.67 | |
| Total BTX | <0.300 | 0.300 | 03/27/2017 | ND | | | | | |

Surrogate: 4-Bromofluorobenzene (PID) 97.8 % 72-148

| Chloride, SM4500Cl-B | | mg/kg | | Analyzed By: HM | | | | | | |
|----------------------|--------|-----------------|------------|-----------------|-----|------------|---------------|------|-----------|--|
| Analyte | Result | Reporting Limit | Analyzed | Method Blank | BS | % Recovery | True Value QC | RPD | Qualifier | |
| Chloride | <16.0 | 16.0 | 03/27/2017 | ND | 432 | 108 | 400 | 3.77 | | |

| TPH 8015M | | mg/kg | | Analyzed By: MS | | | | | | |
|--------------|--------|-----------------|------------|-----------------|-----|------------|---------------|-------|-----------|--|
| Analyte | Result | Reporting Limit | Analyzed | Method Blank | BS | % Recovery | True Value QC | RPD | Qualifier | |
| GRO C6-C10 | <10.0 | 10.0 | 03/27/2017 | ND | 181 | 90.6 | 200 | 0.163 | | |
| DRO >C10-C28 | <10.0 | 10.0 | 03/27/2017 | ND | 189 | 94.5 | 200 | 0.743 | | |

Surrogate: 1-Chlorooctane 92.6 % 25.1-158

Surrogate: 1-Chlorooctadecane 88.5 % 26.8-170

Cardinal Laboratories

*=Accredited Analyte

PLEASE NOTE: Liability and Damages. Cardinal's liability and client's exclusive remedy for any claim arising, whether based in contract or tort, shall be limited to the amount paid by client for analyses. All claims, including those for negligence and any other cause whatsoever shall be deemed waived unless made in writing and received by Cardinal within thirty (30) days after completion of the applicable service. In no event shall Cardinal be liable for incidental or consequential damages, including, without limitation, business interruptions, loss of use, or loss of profits incurred by client, its subsidiaries, affiliates or successors arising out of or related to the performance of the services hereunder by Cardinal, regardless of whether such claim is based upon any of the above stated reasons or otherwise. Results relate only to the samples identified above. This report shall not be reproduced except in full with written approval of Cardinal Laboratories.

Celey D. Keene, Lab Director/Quality Manager



PHONE (575) 393-2326 * 101 E. MARLAND * HOBBS, NM 88240

Analytical Results For:

REPUBLIC BACKHOE SERVICES
ERIC GARCIA
47 E. DICKENS RD
LOVINGTON NM, 88260
Fax To: NONE

Received: 03/24/2017
Reported: 03/28/2017
Project Name: SHELL ST#3
Project Number: NONE GIVEN
Project Location: TATUM

Sampling Date: 03/23/2017
Sampling Type: Soil
Sampling Condition: Cool & Intact
Sample Received By: Tamara Oldaker

Sample ID: NW 20 (H700785-12)

| BTEX 8021B | | mg/kg | | Analyzed By: MS | | | | | |
|----------------|--------|-----------------|------------|-----------------|------|------------|---------------|------|-----------|
| Analyte | Result | Reporting Limit | Analyzed | Method Blank | BS | % Recovery | True Value QC | RPD | Qualifier |
| Benzene* | <0.050 | 0.050 | 03/27/2017 | ND | 1.98 | 98.8 | 2.00 | 5.25 | |
| Toluene* | <0.050 | 0.050 | 03/27/2017 | ND | 1.91 | 95.7 | 2.00 | 5.03 | |
| Ethylbenzene* | <0.050 | 0.050 | 03/27/2017 | ND | 1.91 | 95.5 | 2.00 | 4.71 | |
| Total Xylenes* | <0.150 | 0.150 | 03/27/2017 | ND | 5.44 | 90.7 | 6.00 | 4.67 | |
| Total BTEX | <0.300 | 0.300 | 03/27/2017 | ND | | | | | |

Surrogate: 4-Bromofluorobenzene (PID) 98.6 % 72-148

| Chloride, SM4500Cl-B | | mg/kg | | Analyzed By: HM | | | | | |
|----------------------|--------|-----------------|------------|-----------------|-----|------------|---------------|------|-----------|
| Analyte | Result | Reporting Limit | Analyzed | Method Blank | BS | % Recovery | True Value QC | RPD | Qualifier |
| Chloride | <16.0 | 16.0 | 03/27/2017 | ND | 432 | 108 | 400 | 0.00 | |

| TPH 8015M | | mg/kg | | Analyzed By: MS | | | | | |
|--------------|--------|-----------------|------------|-----------------|-----|------------|---------------|-------|-----------|
| Analyte | Result | Reporting Limit | Analyzed | Method Blank | BS | % Recovery | True Value QC | RPD | Qualifier |
| GRO C6-C10 | <10.0 | 10.0 | 03/27/2017 | ND | 181 | 90.6 | 200 | 0.163 | |
| DRO >C10-C28 | <10.0 | 10.0 | 03/27/2017 | ND | 189 | 94.5 | 200 | 0.743 | |

Surrogate: 1-Chlorooctane 92.9 % 25.1-158

Surrogate: 1-Chlorooctadecane 96.6 % 26.8-170

Cardinal Laboratories

*=Accredited Analyte

PLEASE NOTE: Liability and Damages. Cardinal's liability and client's exclusive remedy for any claim arising, whether based in contract or tort, shall be limited to the amount paid by client for analysis. All claims, including those for negligence and any other cause whatsoever shall be deemed waived unless made in writing and received by Cardinal within thirty (30) days after completion of the applicable service. In no event shall Cardinal be liable for incidental or consequential damages, including, without limitation, business interruptions, loss of use, or loss of profits incurred by client, its subsidiaries, affiliates or successors arising out of or related to the performance of the services hereunder by Cardinal, regardless of whether such claim is based upon any of the above stated reasons or otherwise. Results relate only to the samples identified above. This report shall not be reproduced except in full with written approval of Cardinal Laboratories.

Celey D. Keene, Lab Director/Quality Manager



PHONE (575) 393-2326 • 101 E. MARLAND • HOBBS, NM 88240

Analytical Results For:

REPUBLIC BACKHOE SERVICES
ERIC GARCIA
47 E. DICKENS RD
LOVINGTON NM, 88260
Fax To: NONE

| | | | |
|-------------------|------------|---------------------|----------------|
| Received: | 03/24/2017 | Sampling Date: | 03/23/2017 |
| Reported: | 03/28/2017 | Sampling Type: | Soil |
| Project Name: | SHELL ST#3 | Sampling Condition: | Cool & Intact |
| Project Number: | NONE GIVEN | Sample Received By: | Tamara Oldaker |
| Project Location: | TATUM | | |

Sample ID: CENTER 20 (H700785-13)

| BTEX 80218 | | mg/kg | | Analyzed By: MS | | | | | |
|----------------|--------|-----------------|------------|-----------------|------|------------|---------------|------|-----------|
| Analyte | Result | Reporting Limit | Analyzed | Method Blank | BS | % Recovery | True Value QC | RPD | Qualifier |
| Benzene* | <0.050 | 0.050 | 03/28/2017 | ND | 1.98 | 98.8 | 2.00 | 5.25 | |
| Toluene* | <0.050 | 0.050 | 03/28/2017 | ND | 1.91 | 95.7 | 2.00 | 5.03 | |
| Ethylbenzene* | <0.050 | 0.050 | 03/28/2017 | ND | 1.91 | 95.5 | 2.00 | 4.71 | |
| Total Xylenes* | <0.150 | 0.150 | 03/28/2017 | ND | 5.44 | 90.7 | 6.00 | 4.67 | |
| Total BTEX | <0.300 | 0.300 | 03/28/2017 | ND | | | | | |

Surrogate: 4-Bromofluorobenzene (PID) 98.1 % 72-148

| Chloride, SM4500Cl-B | | mg/kg | | Analyzed By: HM | | | | | |
|----------------------|--------|-----------------|------------|-----------------|-----|------------|---------------|------|-----------|
| Analyte | Result | Reporting Limit | Analyzed | Method Blank | BS | % Recovery | True Value QC | RPD | Qualifier |
| Chloride | <16.0 | 16.0 | 03/27/2017 | ND | 432 | 108 | 400 | 0.00 | |

| TPH 8015M | | mg/kg | | Analyzed By: MS | | | | | |
|--------------|--------|-----------------|------------|-----------------|-----|------------|---------------|-------|-----------|
| Analyte | Result | Reporting Limit | Analyzed | Method Blank | BS | % Recovery | True Value QC | RPD | Qualifier |
| GRO C6-C10 | <10.0 | 10.0 | 03/27/2017 | ND | 181 | 90.6 | 200 | 0.163 | |
| DRO >C10-C28 | <10.0 | 10.0 | 03/27/2017 | ND | 189 | 94.5 | 200 | 0.743 | |

Surrogate: 1-Chlorooctane 82.9 % 25.1-158

Surrogate: 1-Chlorooctadecane 84.3 % 26.8-170

Cardinal Laboratories

*=Accredited Analyte

PLEASE NOTE: Liability and Damages. Cardinal's liability and client's exclusive remedy for any claim arising, whether based in contract or tort, shall be limited to the amount paid by client for analyses. All claims, including those for negligence and any other cause whatsoever shall be deemed waived unless made in writing and received by Cardinal within thirty (30) days after completion of the applicable service. In no event shall Cardinal be liable for incidental or consequential damages, including, without limitation, business interruptions, loss of use, or loss of profits incurred by client, its subsidiaries, affiliates or successors arising out of or related to the performance of the services hereunder by Cardinal, regardless of whether such claim is based upon any of the above stated reasons or otherwise. Results relate only to the samples identified above. This report shall not be reproduced except in full with written approval of Cardinal Laboratories.

Celey D. Keene, Lab Director/Quality Manager



CHAIN-OF-CUSTODY AND ANALYSIS REQUEST

| | | | | | | | | | | | | | | | | | | | |
|--|-------------|-------------------------|--------------|---------------|------------|------------------|-----|--------|-------|-----------|------------|-------|-------|-------|-----|----------|------|--|--|
| 101 East Marland, Hobbs, NM 88240 (575) 393-2326 FAX (575) 393-2476 | | P.O. # | | BILL TO | | ANALYSIS REQUEST | | | | | | | | | | | | | |
| Company Name: Republic Bachhoe Service | | Company: Read + Stevens | | | | | | | | | | | | | | | | | |
| Project Manager: Eric Garcia | | Attn: Joe Tovar | | | | | | | | | | | | | | | | | |
| Address: 47 E Dickens Rd | | Address: P.O. Box 1518 | | | | | | | | | | | | | | | | | |
| City: Lovington | | City: Roswell | | | | | | | | | | | | | | | | | |
| Phone #: 575-863-0131 | | State: NM Zip: 88202 | | | | | | | | | | | | | | | | | |
| Fax #: 575-396-7782 | | Phone #: | | | | | | | | | | | | | | | | | |
| Project #: | | Project Owner: | | | | | | | | | | | | | | | | | |
| Project Name: Shell St #3 | | State: NM Zip: 88202 | | | | | | | | | | | | | | | | | |
| Project Location: Tatum | | Fax #: | | | | | | | | | | | | | | | | | |
| Sampler Name: Mario Garcia | | PRE-SERV | | | | | | | | | | | | | | | | | |
| FOR LAB USE ONLY | | SAMPLING | | | | | | | | | | | | | | | | | |
| Lab I.D. | Sample I.D. | (G)RAB OR (C)OMP | # CONTAINERS | GROUNDWATER | WASTEWATER | SOIL | OIL | SLUDGE | OTHER | ACID/BASE | ICE / COOL | OTHER | DATE | TIME | TPH | Chloride | BTEX | | |
| H100785 | NS 1-10 | G | 1 | | | | | | | | | | 3/24 | 8:15 | X | X | X | | |
| 1 | NS 2-10 | G | 1 | | | | | | | | | | 4:30 | 10:57 | X | X | X | | |
| 2 | NS 3-10 | G | 1 | | | | | | | | | | 11:10 | 12:05 | X | X | X | | |
| 3 | NS 4-10 | G | 1 | | | | | | | | | | 12:45 | 2:20 | X | X | X | | |
| 4 | N 20 | G | 1 | | | | | | | | | | 3:49 | 5:18 | X | X | X | | |
| 5 | NE 20 | G | 1 | | | | | | | | | | | | | | | | |
| 6 | E 20 | G | 1 | | | | | | | | | | | | | | | | |
| 7 | SE 20 | G | 1 | | | | | | | | | | | | | | | | |
| 8 | S 20 | G | 1 | | | | | | | | | | | | | | | | |
| 9 | | G | 1 | | | | | | | | | | | | | | | | |
| 10 | | G | 1 | | | | | | | | | | | | | | | | |
| Relinquished By: | | Received By: | | | | | | | | | | | | | | | | | |
| Date: | | Date: | | | | | | | | | | | | | | | | | |
| Time: | | Time: | | | | | | | | | | | | | | | | | |
| Delivered By: (Circle One) | | Sample Condition | | CHECKED BY: | | | | | | | | | | | | | | | |
| Sampler - UPS - Bus - Other: | | Cool Intact | | (Initials) | | | | | | | | | | | | | | | |
| 3:24-17 | | Yes Yes | | Amara | | | | | | | | | | | | | | | |
| 7:00 | | No No | | 3:12 | | | | | | | | | | | | | | | |
| 79: #75 | | | | | | | | | | | | | | | | | | | |
| Phone Result: | | Fax Result: | | Phone Result: | | Fax Result: | | | | | | | | | | | | | |
| Yes No | | Yes No | | Yes No | | Yes No | | | | | | | | | | | | | |
| REMARKS: | | | | | | | | | | | | | | | | | | | |

* Cardinal cannot accept verbal changes. Please fax written changes to (575) 393-2326



CHAIN-OF-CUSTODY AND ANALYSIS REQUEST

101 East Marland, Hobbs, NM 88240
(575) 393-2326 FAX (575) 393-2476

| | | | | | |
|---|-----------------------------------|--|--|--|-------------------------|
| Company Name: Republic Backhoe Service Project Manager: Eric Garcia Address: 47 E Dickens Rd City: Lovington State: NM Zip: 88240 Phone #: 575-596-7782 Fax #: 575-596-7782 Project #: Project Name: Shell St #3 Project Location: Station Sampler Name: Mark Garcia <small>FOR LAB USE ONLY</small> | | BILL TO P.O. #: Company: Lead & Stevens Attn: Joe Tovar Address: P.O. Box 198 City: Roswell State: NM Zip: 88202 Phone #: Fax #: | | ANALYSIS REQUEST | |
| Lab I.D. 4700785 11 NW 20 12 Center 20 13 | Sample I.D. 6 5 6 | (G)RAB OR (C)OMP # CONTAINERS GROUNDWATER WASTEWATER SOIL OIL SLUDGE OTHER: ACID/BASE: ICE / COOL OTHER: | MATRIX PRESERV SAMPLING | DATE 3/23 TIME 1:57 10:50 1:16 | TPH Chloride BTEX |
| <small>PLEASE NOTE: Liability and Ownership: Cardinal's liability and ownership extends to the date the sample is received at the laboratory. After delivery, including but not limited to, transportation, storage, analysis, and distribution, the sample is the property of the client. The client is responsible for the sample's integrity and for any damage or loss. The client is responsible for the sample's integrity and for any damage or loss. The client is responsible for the sample's integrity and for any damage or loss.</small> | | | | | |
| Relinquished By: Date: _____ Time: _____ | | Received By: Date: _____ Time: _____ | | Phone Result: <input type="checkbox"/> Yes <input type="checkbox"/> No Add'l Phone #: _____ Fax Result: <input type="checkbox"/> Yes <input type="checkbox"/> No Add'l Fax #: _____ | |
| Relinquished By: Date: _____ Time: _____ | | Received By: Date: _____ Time: _____ | | REMARKS: Tried to call Customer Twice on NW20 Sample TO. 3-24-17 @ 14:00hrs | |
| Delivered By: (Circle One) Sampler - UPS - Bus - Other: | | Received By: Date: _____ Time: _____ | | Phone Result: <input type="checkbox"/> Yes <input type="checkbox"/> No Add'l Phone #: _____ Fax Result: <input type="checkbox"/> Yes <input type="checkbox"/> No Add'l Fax #: _____ | |

† Cardinal cannot accept verbal changes. Please fax written changes to (575) 393-2326



PHONE (575) 393-2326 * 101 E. MARLAND * HOBBS, NM 88240

March 28, 2017

ERIC GARCIA
REPUBLIC BACKHOE SERVICES
47 E. DICKENS RD
LOVINGTON, NM 88260

RE: SHELL ST#3

Enclosed are the results of analyses for samples received by the laboratory on 03/24/17 13:00.

Cardinal Laboratories is accredited through Texas NELAP under certificate number T104704398-16-8. Accreditation applies to drinking water, non-potable water and solid and chemical materials. All accredited analytes are denoted by an asterisk (*). For a complete list of accredited analytes and matrices visit the TCEQ website at www.tceq.texas.gov/field/qa/lab_accred_certif.html.

Cardinal Laboratories is accredited through the State of Colorado Department of Public Health and Environment for:

| | |
|------------------|------------------------------|
| Method EPA 552.2 | Haloacetic Acids (HAA-5) |
| Method EPA 524.2 | Total Trihalomethanes (TTHM) |
| Method EPA 524.4 | Regulated VOCs (V1, V2, V3) |

Accreditation applies to public drinking water matrices.

This report meets NELAP requirements and is made up of a cover page, analytical results, and a copy of the original chain-of-custody. If you have any questions concerning this report, please feel free to contact me.

Sincerely,

A handwritten signature in black ink that reads "Caley D. Keene".

Caley D. Keene
Lab Director/Quality Manager



PHONE (575) 393-2326 • 101 E. MARLAND • HOBBS, NM 88240

Analytical Results For:

REPUBLIC BACKHOE SERVICES
ERIC GARCIA
47 E. DICKENS RD
LOVINGTON NM, 88260
Fax To: NONE

Received: 03/24/2017
Reported: 03/28/2017
Project Name: SHELL ST#3
Project Number: NONE GIVEN
Project Location: TATUM

Sampling Date: 03/24/2017
Sampling Type: Soil
Sampling Condition: Cool & Intact
Sample Received By: Tamara Oldaker

Sample ID: NS 1 - 10 (H700785-01)

| BTX 8021B | | mg/kg | | Analyzed By: MS | | | | | |
|----------------|--------|-----------------|------------|-----------------|------|------------|---------------|------|-----------|
| Analyte | Result | Reporting Limit | Analyzed | Method Blank | BS | % Recovery | True Value QC | RPD | Qualifier |
| Benzene* | <0.050 | 0.050 | 03/27/2017 | ND | 1.98 | 98.8 | 2.00 | 5.25 | |
| Toluene* | 0.072 | 0.050 | 03/27/2017 | ND | 1.91 | 95.7 | 2.00 | 5.03 | |
| Ethylbenzene* | <0.050 | 0.050 | 03/27/2017 | ND | 1.91 | 95.5 | 2.00 | 4.71 | |
| Total Xylenes* | <0.150 | 0.150 | 03/27/2017 | ND | 5.44 | 90.7 | 6.00 | 4.67 | |
| Total BTX | <0.300 | 0.300 | 03/27/2017 | ND | | | | | |

Surrogate: 4-Bromofluorobenzene (PID) 98.2 % 72-148

| Chloride, SM4500Cl-B | | mg/kg | | Analyzed By: HM | | | | | |
|----------------------|--------|-----------------|------------|-----------------|-----|------------|---------------|-------|-----------|
| Analyte | Result | Reporting Limit | Analyzed | Method Blank | BS | % Recovery | True Value QC | RPD | Qualifier |
| Chloride | <16.0 | 16.0 | 03/27/2017 | ND | 432 | 108 | 400 | 3.77 | |
| TPH 8015M | | mg/kg | | Analyzed By: MS | | | | | |
| Analyte | Result | Reporting Limit | Analyzed | Method Blank | BS | % Recovery | True Value QC | RPD | Qualifier |
| GRO C6-C10 | <10.0 | 10.0 | 03/27/2017 | ND | 181 | 90.6 | 200 | 0.163 | |
| DRO >C10-C28 | <10.0 | 10.0 | 03/27/2017 | ND | 189 | 94.5 | 200 | 0.743 | |

Surrogate: 1-Chlorooctane 89.9 % 25.1-158

Surrogate: 1-Chlorodecane 93.7 % 26.8-170

Cardinal Laboratories

*=Accredited Analyte

NOTES: Liability and Damages: Cardinal's liability and clients' exclusive remedy for any claim arising, whether based in contract or tort, shall be limited to the amount paid by client for analysis. (1) claims, including those for negligence and any other cause whatsoever shall be deemed waived unless made in writing and received by Cardinal within thirty (30) days after completion of the applicable service. In no event shall Cardinal be liable for incidental or consequential damages, including, without limitation, business interruptions, loss of use, or loss of profits incurred by client, its subsidiaries, affiliates or successors arising out of or related to the performance of the services furnished by Cardinal, regardless of whether such claim is based upon any of the above stated reasons or otherwise. Results relate only to the samples identified above. This report shall not be reproduced except in full with written approval of Cardinal Laboratories.

Celey D. Keene, Lab Director/Quality Manager



PHONE (575) 393-2326 • 101 E. MARLAND • HOBBS, NM 88240

Analytical Results For:

REPUBLIC BACKHOE SERVICES
ERIC GARCIA
47 E. DICKENS RD
LOVINGTON NM, 88260
Fax To: NONE

Received: 03/24/2017
Reported: 03/28/2017
Project Name: SHELL ST#3
Project Number:
Project Location: TATUM

Sampling Date: 03/24/2017
Sampling Type: Soil
Sampling Condition: Cool & Intact
Sample Received By: Tamara Oldaker

Sample ID: NS 2 - 10 (H700785-02)

| BTEX 8021B | | mg/kg | | Analyzed By: MS | | | | | | |
|----------------|--------|-----------------|------------|-----------------|------|------------|---------------|------|-----------|--|
| Analyte | Result | Reporting Limit | Analyzed | Method Blank | BS | % Recovery | True Value QC | RPD | Qualifier | |
| Benzene* | <0.050 | 0.050 | 03/27/2017 | ND | 1.98 | 98.8 | 2.00 | 5.25 | | |
| Toluene* | <0.050 | 0.050 | 03/27/2017 | ND | 1.91 | 95.7 | 2.00 | 5.03 | | |
| Ethylbenzene* | <0.050 | 0.050 | 03/27/2017 | ND | 1.91 | 95.5 | 2.00 | 4.71 | | |
| Total Xylenes* | <0.150 | 0.150 | 03/27/2017 | ND | 5.44 | 90.7 | 6.00 | 4.67 | | |
| Total BTEX | <0.300 | 0.300 | 03/27/2017 | ND | | | | | | |

Surrogate: 4-Bromofluorobenzene (PID) 98.4 % 72-148

| Chloride, SM4500Cl-B | | mg/kg | | Analyzed By: HM | | | | | | |
|----------------------|--------|-----------------|------------|-----------------|-----|------------|---------------|------|-----------|--|
| Analyte | Result | Reporting Limit | Analyzed | Method Blank | BS | % Recovery | True Value QC | RPD | Qualifier | |
| Chloride | <16.0 | 16.0 | 03/27/2017 | ND | 432 | 108 | 400 | 3.77 | | |

| TPH 8015M | | mg/kg | | Analyzed By: MS | | | | | | |
|--------------|--------|-----------------|------------|-----------------|-----|------------|---------------|-------|-----------|--|
| Analyte | Result | Reporting Limit | Analyzed | Method Blank | BS | % Recovery | True Value QC | RPD | Qualifier | |
| GRD C5-C10 | <10.0 | 10.0 | 03/27/2017 | ND | 181 | 90.6 | 200 | 0.163 | | |
| DRD >C10-C28 | <10.0 | 10.0 | 03/27/2017 | ND | 189 | 94.5 | 200 | 0.743 | | |

Surrogate: 1-Chlorooctane 84.4 % 25.1-158

Surrogate: 1-Chlorooctadecane 79.0 % 26.8-170

Cardinal Laboratories

*=Accredited Analyte

PUBLIC NOTICE: Liability and Damages. Cardinal's liability and service are limited to the amount paid by client for analysis. All claims, including those for negligence and any other cause whatsoever shall be deemed waived unless made in writing and received by Cardinal within thirty (30) days after completion of the applicable service. In no event shall Cardinal be liable for incidental or consequential damages, including without limitation, business interruptions, loss of use, or loss of profits incurred by client, its subsidiaries, affiliates or successors arising out of or related to the performance of the services furnished by Cardinal, regardless of whether such claim is based upon any of the above stated reasons or otherwise. Results relate only to the samples identified above. This report shall not be reproduced except in full with written approval of Cardinal Laboratories.

Celey D. Keene, Lab Director/Quality Manager



PHONE (575) 393-2326 • 101 E. MARLAND • HOBBS, NM 88240

Analytical Results For:

REPUBLIC BACKHOE SERVICES
ERIC GARCIA
47 E. DICKENS RD
LOVINGTON NM, 88260
Fax To: NONE

Received: 03/24/2017
Reported: 03/28/2017
Project Name: SHELL ST#3
Project Number: NONE GIVEN
Project Location: TATUM

Sampling Date: 03/24/2017
Sampling Type: Soil
Sampling Condition: Cool & Intact
Sample Received By: Tamara Oldaker

Sample ID: NS 3 - 10 (H700785-03)

| BTEX 80218 | | mg/kg | | Analyzed By: MS | | | | | |
|----------------|--------|-----------------|------------|-----------------|------|------------|---------------|------|-----------|
| Analyte | Result | Reporting Limit | Analyzed | Method Blank | BS | % Recovery | True Value QC | RPD | Qualifier |
| Benzene* | <0.050 | 0.050 | 03/27/2017 | ND | 1.98 | 98.8 | 2.00 | 5.25 | |
| Toluene* | <0.050 | 0.050 | 03/27/2017 | ND | 1.91 | 95.7 | 2.00 | 5.03 | |
| Ethylbenzene* | <0.050 | 0.050 | 03/27/2017 | ND | 1.91 | 95.5 | 2.00 | 4.71 | |
| Total Xylenes* | <0.150 | 0.150 | 03/27/2017 | ND | 5.44 | 90.7 | 6.00 | 4.67 | |
| Total BTEX | <0.300 | 0.300 | 03/27/2017 | ND | | | | | |

Surrogate: 4-Bromofluorobenzene (PID) 97.6 % 72-148

| Chloride, SM4500Cl-B | | mg/kg | | Analyzed By: HM | | | | | |
|----------------------|--------|-----------------|------------|-----------------|-----|------------|---------------|------|-----------|
| Analyte | Result | Reporting Limit | Analyzed | Method Blank | BS | % Recovery | True Value QC | RPD | Qualifier |
| Chloride | <16.0 | 16.0 | 03/27/2017 | ND | 432 | 108 | 400 | 3.77 | |

| TPH 8015M | | mg/kg | | Analyzed By: MS | | | | | |
|--------------|--------|-----------------|------------|-----------------|-----|------------|---------------|-------|-----------|
| Analyte | Result | Reporting Limit | Analyzed | Method Blank | BS | % Recovery | True Value QC | RPD | Qualifier |
| GRD C5-C10 | <10.0 | 10.0 | 03/27/2017 | ND | 181 | 90.6 | 200 | 0.163 | |
| DRD >C10-C28 | <10.0 | 10.0 | 03/27/2017 | ND | 189 | 94.5 | 200 | 0.743 | |

Surrogate: 1-Chlorooctane 86.8 % 25.1-158

Surrogate: 1-Chlorodecane 92.7 % 26.8-170

Cardinal Laboratories

*=Accredited Analyte

LABORATORY: Liability and Damages: Cardinal's liability and clients' exclusive remedy for any claim arising, whether based in contract or tort, shall be limited to the amount paid by client for analyses. All claims, including those for negligence and any other cause whatsoever shall be deemed waived unless made in writing and received by Cardinal within thirty (30) days after completion of the applicable service. In no event shall Cardinal be liable for incidental or consequential damages, including without limitation, business interruptions, loss of use, or loss of profits incurred by client, its subsidiaries, affiliates or successors arising out of or related to the performance of the services furnished by Cardinal, regardless of whether such claim is based upon any of the above stated causes or otherwise. Results relate only to the samples identified above. This report shall not be reproduced, stored in full or in part without approval of Cardinal Laboratories.

Celey D. Keene, Lab Director/Quality Manager



PHONE (575) 393-2326 • 101 E. MARLAND • HOBBS, NM 88240

Analytical Results For:

REPUBLIC BACKHOE SERVICES
ERIC GARCIA
47 E. DICKENS RD
LOVINGTON NM, 88260
Fax To: NONE

Received: 03/24/2017
Reported: 03/28/2017
Project Name: SHELL ST#3
Project Number: NONE GIVEN
Project Location: TATUM

Sampling Date: 03/24/2017
Sampling Type: Soil
Sampling Condition: Cool & Intact
Sample Received By: Tamara Oldaker

Sample ID: NS 4 - 10 (H700785-04)

| BTX 8021B | | mg/kg | | Analyzed By: MS | | | | | |
|----------------|--------|-----------------|------------|-----------------|------|------------|---------------|------|-----------|
| Analyte | Result | Reporting Limit | Analyzed | Method Blank | BS | % Recovery | True Value QC | RPD | Qualifier |
| Benzene* | <0.050 | 0.050 | 03/27/2017 | ND | 1.98 | 98.8 | 2.00 | 5.25 | |
| Toluene* | <0.050 | 0.050 | 03/27/2017 | ND | 1.91 | 95.7 | 2.00 | 5.03 | |
| Ethylbenzene* | <0.050 | 0.050 | 03/27/2017 | ND | 1.91 | 95.5 | 2.00 | 4.71 | |
| Total Xylenes* | <0.150 | 0.150 | 03/27/2017 | ND | 5.44 | 90.7 | 6.00 | 4.67 | |
| Total BTEX | <0.300 | 0.300 | 03/27/2017 | ND | | | | | |

Surrogate: 4-Bromofluorobenzene (PIL) 98.8 % 72-148

| Chloride, SM4500Cl-B | | mg/kg | | Analyzed By: HM | | | | | |
|----------------------|--------|-----------------|------------|-----------------|-----|------------|---------------|------|-----------|
| Analyte | Result | Reporting Limit | Analyzed | Method Blank | BS | % Recovery | True Value QC | RPD | Qualifier |
| Chloride | <16.0 | 16.0 | 03/27/2017 | ND | 432 | 108 | 400 | 3.77 | |

| TPH 8015M | | mg/kg | | Analyzed By: MS | | | | | |
|--------------|--------|-----------------|------------|-----------------|-----|------------|---------------|-------|-----------|
| Analyte | Result | Reporting Limit | Analyzed | Method Blank | BS | % Recovery | True Value QC | RPD | Qualifier |
| GRD C6-C10 | <10.0 | 10.0 | 03/27/2017 | ND | 181 | 90.6 | 200 | 0.163 | |
| DRO >C10-C28 | <10.0 | 10.0 | 03/27/2017 | ND | 189 | 94.5 | 200 | 0.743 | |

Surrogate: 1-Chlorooctane 85.5 % 25.1-158

Surrogate: 1-Chlorooctadecane 86.5 % 26.8-170

Cardinal Laboratories

*=Accredited Analyte

PLEASE NOTE: Liability and Damages. Cardinal's liability and service are limited to any claim arising, whether based in contract or tort, that is limited to the amount paid by client for analysis. All claims, including those for negligence and any other cause whatsoever shall be deemed waived unless made in writing and received by Cardinal within thirty (30) days after completion of the applicable service. In no event shall Cardinal be liable for incidental or consequential damages, including without limitation, business interruptions, loss of use, or loss of profits incurred by client, its subsidiaries, affiliates or customers arising out of or related to the performance of the services furnished by Cardinal, regardless of whether such claim is based upon any of the above stated reasons or otherwise. Results made only to the samples identified above. This report shall not be reproduced except in full without approval of Cardinal Laboratories.

Celey D. Keene, Lab Director/Quality Manager



PHONE (575) 393-2326 • 101 E. MARLAND • HOBBS, NM 88240

Analytical Results For:REPUBLIC BACKHOE SERVICES
ERIC GARCIA
47 E. DICKENS RD
LOVINGTON NM, 88260
Fax To: NONEReceived: 03/24/2017
Reported: 03/28/2017
Project Name: SHELL ST#3
Project Number:
Project Location: TATUMSampling Date: 03/23/2017
Sampling Type: Soil
Sampling Condition: Cool & Intact
Sample Received By: Tamara Oldaker**Sample ID: N 20 (H700785-05)**

| BTEX 8021B | | mg/kg | | Analyzed By: MS | | | | | |
|----------------|--------|-----------------|------------|-----------------|------|------------|---------------|------|-----------|
| Analyte | Result | Reporting Limit | Analyzed | Method Blank | BS | % Recovery | True Value QC | RPD | Qualifier |
| Benzene* | <0.050 | 0.050 | 03/27/2017 | ND | 1.98 | 98.8 | 2.00 | 5.25 | |
| Toluene* | <0.050 | 0.050 | 03/27/2017 | ND | 1.91 | 95.7 | 2.00 | 5.03 | |
| Ethylbenzene* | <0.050 | 0.050 | 03/27/2017 | ND | 1.91 | 95.5 | 2.00 | 4.71 | |
| Total Xylenes* | <0.150 | 0.150 | 03/27/2017 | ND | 5.44 | 90.7 | 6.00 | 4.67 | |
| Total BTEX | <0.300 | 0.300 | 03/27/2017 | ND | | | | | |

Surrogate: 4-Bromofluorobenzene (PID) 98.2 % 72-148

| Chloride, SM4500Cl-B | | mg/kg | | Analyzed By: HM | | | | | |
|----------------------|--------|-----------------|------------|-----------------|-----|------------|---------------|------|-----------|
| Analyte | Result | Reporting Limit | Analyzed | Method Blank | BS | % Recovery | True Value QC | RPD | Qualifier |
| Chloride | <16.0 | 16.0 | 03/27/2017 | ND | 432 | 108 | 400 | 3.77 | |

| TPH 8015M | | mg/kg | | Analyzed By: MS | | | | | |
|--------------|--------|-----------------|------------|-----------------|-----|------------|---------------|-------|-----------|
| Analyte | Result | Reporting Limit | Analyzed | Method Blank | BS | % Recovery | True Value QC | RPD | Qualifier |
| GRD C5-C10 | <10.0 | 10.0 | 03/27/2017 | ND | 181 | 90.6 | 200 | 0.163 | |
| DRD >C10-C28 | <10.0 | 10.0 | 03/27/2017 | ND | 189 | 94.5 | 200 | 0.743 | |

Surrogate: 1-Chlorooctane 91.9 % 25.1-158

Surrogate: 1-Chlorooctadecane 94.4 % 26.8-170

Cardinal Laboratories

* = Accredited Analyte

PLEASE NOTE: Liability and Damages. Cardinal's liability and clients' exclusive remedy for any claim arising, whether based in contract or tort, shall be limited to the amount paid to client for analysis. (1) claims, including those for negligence and any other cause whatsoever shall be deemed waived unless made in writing and received by Cardinal within thirty (30) days after completion of the applicable service. In no event shall Cardinal be liable for incidental or consequential damages, including without limitation, business interruptions, loss of use, or loss of profits incurred by client, its subsidiaries, affiliates or successors arising out of or related to the performance of the services provided by Cardinal, regardless of whether such claim is based upon any of the above stated reasons or otherwise. Results relate only to the samples identified above. This report shall not be reproduced except in full with written approval of Cardinal Laboratories.

Celey D. Keene, Lab Director/Quality Manager



PHONE (575) 393-2326 * 101 E. MARLAND * HOBBS, NM 88240

Analytical Results For:

REPUBLIC BACKHOE SERVICES
ERIC GARCIA
47 E. DICKENS RD
LOVINGTON NM, 88260
Fax To: NONE

Received: 03/24/2017
Reported: 03/28/2017
Project Name: SHELL ST#3
Project Number: NONE GIVEN
Project Location: TATUM

Sampling Date: 03/23/2017
Sampling Type: Soil
Sampling Condition: Cool & Intact
Sample Received By: Tamara Oldaker

Sample ID: NE 20 (H700785-06)

| BTEX 8021B | | mg/kg | | Analyzed By: MS | | | | | |
|----------------|--------|-----------------|------------|-----------------|------|------------|---------------|------|-----------|
| Analyte | Result | Reporting Limit | Analyzed | Method Blank | BS | % Recovery | True Value QC | RPD | Qualifier |
| Benzene* | <0.050 | 0.050 | 03/27/2017 | ND | 1.98 | 98.8 | 2.00 | 5.25 | |
| Toluene* | <0.050 | 0.050 | 03/27/2017 | ND | 1.91 | 95.7 | 2.00 | 5.03 | |
| Ethylbenzene* | <0.050 | 0.050 | 03/27/2017 | ND | 1.91 | 95.5 | 2.00 | 4.71 | |
| Total Xylenes* | <0.150 | 0.150 | 03/27/2017 | ND | 5.44 | 90.7 | 6.00 | 4.67 | |
| Total BTEX | <0.300 | 0.300 | 03/27/2017 | ND | | | | | |

Surrogate: 4-Bromofluorobenzene (PID) 98.4 % 72-148

| Chloride, SM4500Cl-B | | mg/kg | | Analyzed By: HM | | | | | |
|----------------------|--------|-----------------|------------|-----------------|-----|------------|---------------|------|-----------|
| Analyte | Result | Reporting Limit | Analyzed | Method Blank | BS | % Recovery | True Value QC | RPD | Qualifier |
| Chloride | <16.0 | 16.0 | 03/27/2017 | ND | 432 | 108 | 400 | 3.77 | |

| TPH 8015M | | mg/kg | | Analyzed By: MS | | | | | |
|--------------|--------|-----------------|------------|-----------------|-----|------------|---------------|-------|-----------|
| Analyte | Result | Reporting Limit | Analyzed | Method Blank | BS | % Recovery | True Value QC | RPD | Qualifier |
| GRD C6-C10 | <10.0 | 10.0 | 03/27/2017 | ND | 181 | 90.6 | 200 | 0.163 | |
| DRD >C10-C28 | <10.0 | 10.0 | 03/27/2017 | ND | 189 | 94.5 | 200 | 0.743 | |

Surrogate: 1-Chlorooctane 88.6 % 25.1-158

Surrogate: 1-Chlorooctadecane 91.7 % 26.8-170

Cardinal Laboratories

*=Accredited Analyte

PLEASE NOTE: Liability and Damages. Cardinal's liability and client's exclusive remedy for any claim arising, whether based in contract or tort, shall be limited to the amount paid by client for analysis. All claims, including those for negligence and any other cause whatsoever shall be deemed waived unless made in writing and received by Cardinal within thirty (30) days after completion of the applicable service. In no event shall Cardinal be liable for incidental or consequential damages, including without limitation, business interruptions, loss of use, or loss of profits incurred by client, its subsidiaries, affiliates or successors arising out of or related to the performance of the services furnished by Cardinal, regardless of whether such claim is based upon any of the above stated reasons or otherwise. Results relate only to the samples identified above. This report shall not be reproduced, stored in full or in part without approval of Cardinal Laboratories.

Celey D. Keene, Lab Director/Quality Manager



PHONE (575) 393-2326 • 101 E. MARLAND • HOBBS, NM 88240

Analytical Results For:

REPUBLIC BACKHOE SERVICES
ERIC GARCIA
47 E. DICKENS RD
LOVINGTON NM, 88260
Fax To: NONE

Received: 03/24/2017
Reported: 03/28/2017
Project Name: SHELL ST#3
Project Number: NONE GIVEN
Project Location: TATUM

Sampling Date: 03/23/2017
Sampling Type: Soil
Sampling Condition: Cool & Intact
Sample Received By: Tamara Oldaker

Sample ID: E 20 (H700785-07)

| BTX 8021B | | mg/kg | | Analyzed By: MS | | | | | |
|----------------|--------|-----------------|------------|-----------------|------|------------|---------------|------|-----------|
| Analyte | Result | Reporting Limit | Analyzed | Method Blank | BS | % Recovery | True Value QC | RPD | Qualifier |
| Benzene* | <0.050 | 0.050 | 03/27/2017 | ND | 1.98 | 98.8 | 2.00 | 5.25 | |
| Toluene* | <0.050 | 0.050 | 03/27/2017 | ND | 1.91 | 95.7 | 2.00 | 5.03 | |
| Ethylbenzene* | <0.050 | 0.050 | 03/27/2017 | ND | 1.91 | 95.5 | 2.00 | 4.71 | |
| Total Xylenes* | <0.150 | 0.150 | 03/27/2017 | ND | 5.44 | 90.7 | 6.00 | 4.67 | |
| Total BTX | <0.300 | 0.300 | 03/27/2017 | ND | | | | | |

Surrogate: 4-Bromofluorobenzene (PID) 98.4 % 72-148

| Chloride, SM4500Cl-B | | mg/kg | | Analyzed By: HM | | | | | |
|----------------------|--------|-----------------|------------|-----------------|-----|------------|---------------|------|-----------|
| Analyte | Result | Reporting Limit | Analyzed | Method Blank | BS | % Recovery | True Value QC | RPD | Qualifier |
| Chloride | <16.0 | 16.0 | 03/27/2017 | ND | 432 | 108 | 400 | 3.77 | |
| TPH 8015M | | mg/kg | | Analyzed By: MS | | | | | |

| TPH 8015M | | mg/kg | | Analyzed By: MS | | | | | |
|--------------|--------|-----------------|------------|-----------------|-----|------------|---------------|-------|-----------|
| Analyte | Result | Reporting Limit | Analyzed | Method Blank | BS | % Recovery | True Value QC | RPD | Qualifier |
| GRO C6-C10 | <10.0 | 10.0 | 03/27/2017 | ND | 181 | 90.6 | 200 | 0.163 | |
| DRO >C10-C28 | <10.0 | 10.0 | 03/27/2017 | ND | 189 | 94.5 | 200 | 0.743 | |

Surrogate: 1-Chlorooctane 94.0 % 25.1-158

Surrogate: 1-Chlorooctadecane 93.6 % 26.8-170

Cardinal Laboratories

*=Accredited Analyte

PLEASE NOTE: Liability and Damages. Cardinal's liability and clients' recourse remedy for any claim arising, whether based in contract or tort, shall be limited to the amount paid by client for analyses. All claims, including those for negligence and any other cause whatsoever, shall be deemed waived unless made in writing and received by Cardinal within thirty (30) days after completion of the applicable service. In no event shall Cardinal be liable for incidental or consequential damages, including, without limitation, business interruptions, loss of use, or loss of profits incurred by client, its subsidiaries, affiliates or successors arising out of or related to the performance of the services furnished by Cardinal, regardless of whether such claim is based upon any of the above stated reasons or otherwise. Results relate only to the samples identified above. This report shall not be reproduced except in full with written approval of Cardinal Laboratories.

Celey D. Keene, Lab Director/Quality Manager



PHONE (575) 393-2326 • 101 E. MARLAND • HOBBS, NM 88240

Analytical Results For:

REPUBLIC BACKHOE SERVICES
ERIC GARCIA
47 E. DICKENS RD
LOVINGTON NM, 88260
Fax To: NONE

Received: 03/24/2017
Reported: 03/28/2017
Project Name: SHELL ST#3
Project Number: NONE GIVEN
Project Location: TATUM

Sampling Date: 03/23/2017
Sampling Type: Soil
Sampling Condition: Cool & Intact
Sample Received By: Tamara Oldaker

Sample ID: SE 20 (H700785-08)

| BTEX 80218 | | mg/kg | | Analyzed By: MS | | | | | |
|----------------|--------|-----------------|------------|-----------------|------|------------|---------------|------|-----------|
| Analyte | Result | Reporting Limit | Analyzed | Method Blank | BS | % Recovery | True Value QC | RPD | Qualifier |
| Benzene* | <0.050 | 0.050 | 03/27/2017 | ND | 1.98 | 98.8 | 2.00 | 5.25 | |
| Toluene* | <0.050 | 0.050 | 03/27/2017 | ND | 1.91 | 95.7 | 2.00 | 5.03 | |
| Ethylbenzene* | <0.050 | 0.050 | 03/27/2017 | ND | 1.91 | 95.5 | 2.00 | 4.71 | |
| Total Xylenes* | <0.150 | 0.150 | 03/27/2017 | ND | 5.44 | 90.7 | 6.00 | 4.67 | |
| Total BTEX | <0.300 | 0.300 | 03/27/2017 | ND | | | | | |

Surrogate: 4-Bromofluorobenzene (PID) 98.9 % 72-148

| Chloride, SM4500Cl-B | | mg/kg | | Analyzed By: HM | | | | | |
|----------------------|--------|-----------------|------------|-----------------|-----|------------|---------------|------|-----------|
| Analyte | Result | Reporting Limit | Analyzed | Method Blank | BS | % Recovery | True Value QC | RPD | Qualifier |
| Chloride | <16.0 | 16.0 | 03/27/2017 | ND | 432 | 108 | 400 | 3.77 | |

| TPH 8015M | | mg/kg | | Analyzed By: MS | | | | | |
|--------------|--------|-----------------|------------|-----------------|-----|------------|---------------|-------|-----------|
| Analyte | Result | Reporting Limit | Analyzed | Method Blank | BS | % Recovery | True Value QC | RPD | Qualifier |
| GRO C6-C10 | <10.0 | 10.0 | 03/27/2017 | ND | 181 | 90.6 | 200 | 0.163 | |
| DRO >C10-C28 | <10.0 | 10.0 | 03/27/2017 | ND | 189 | 94.5 | 200 | 0.743 | |

Surrogate: 1-Chlorooctane 85.0 % 25.1-158

Surrogate: 1-Chlorooctadecane 86.2 % 26.8-170

Cardinal Laboratories

* = Accredited Analyte

PUBLIC NOTICE: Liability and Damages. Cardinal's liability and service assurance remedy for any claim arising, whether based in contract or tort, shall be limited to the amount paid to client for services. (1) claims, including those for negligence and any other cause whatsoever shall be deemed waived unless made in writing and received by Cardinal within thirty (30) days after completion of the applicable service. In no event shall Cardinal be liable for incidental or consequential damages, including, without limitation, business interruptions, loss of use, or loss of profits incurred by client. In no event shall Cardinal be liable for damages arising out of or related to the performance of the services furnished by Cardinal, regardless of whether such claim is based upon any of the above stated causes or otherwise. Results made only to the samples identified above. This report shall not be reproduced except in full without approval of Cardinal Laboratories.

Celey D. Keane, Lab Director/Quality Manager

Analytical Results For:

 REPUBLIC BACKHOE SERVICES
 ERIC GARCIA
 47 E. DICKENS RD
 LOVINGTON NM, 88260
 Fax To: NONE

 Received: 03/24/2017
 Reported: 03/28/2017
 Project Name: SHELL ST#3
 Project Number: NONE GIVEN
 Project Location: TATUM

 Sampling Date: 03/23/2017
 Sampling Type: Soil
 Sampling Condition: Cool & Intact
 Sample Received By: Tamara Oldaker

Sample ID: S 20 (H700785-09)

| BTX 80218 | | mg/kg | | Analyzed By: MS | | | | | |
|----------------|--------|-----------------|------------|-----------------|------|------------|---------------|------|-----------|
| Analyte | Result | Reporting Limit | Analyzed | Method Blank | BS | % Recovery | True Value QC | RPD | Qualifier |
| Benzene* | <0.050 | 0.050 | 03/27/2017 | ND | 1.98 | 98.8 | 2.00 | 5.25 | |
| Toluene* | <0.050 | 0.050 | 03/27/2017 | ND | 1.91 | 95.7 | 2.00 | 5.03 | |
| Ethylbenzene* | <0.050 | 0.050 | 03/27/2017 | ND | 1.91 | 95.5 | 2.00 | 4.71 | |
| Total Xylenes* | <0.150 | 0.150 | 03/27/2017 | ND | 5.44 | 90.7 | 6.00 | 4.67 | |
| Total BTX | <0.300 | 0.300 | 03/27/2017 | ND | | | | | |

| Surrogate: 4-Bromofluorobenzene (PIL) | | 98.8 % | 72-148 | | | | | | |
|---------------------------------------|--------|-----------------|------------|-----------------|-----|------------|---------------|-------|-----------|
| Chloride, SM4500Cl-B | | mg/kg | | Analyzed By: HM | | | | | |
| Analyte | Result | Reporting Limit | Analyzed | Method Blank | BS | % Recovery | True Value QC | RPD | Qualifier |
| Chloride | <16.0 | 16.0 | 03/27/2017 | ND | 432 | 108 | 400 | 3.77 | |
| TPH 8015M | | mg/kg | | Analyzed By: MS | | | | | |
| Analyte | Result | Reporting Limit | Analyzed | Method Blank | BS | % Recovery | True Value QC | RPD | Qualifier |
| GRO C6-C10 | <10.0 | 10.0 | 03/27/2017 | ND | 181 | 90.6 | 200 | 0.163 | |
| DRO >C10-C28 | <10.0 | 10.0 | 03/27/2017 | ND | 189 | 94.5 | 200 | 0.743 | |

 Surrogate: 1-Chlorooctane 90.6 % 25.1-158
 Surrogate: 1-Chlorodecane 92.5 % 26.8-170

Cardinal Laboratories

* = Accredited Analyte

PUBLIC NOTICE: Liability and Damages: Cardinal's liability and which extends remedy for any claim arising, whether based in contract or tort, shall be limited to the amount paid to client for analyses. All claims, including those for negligence and any other cause whatsoever shall be deemed waived unless made in writing and received by Cardinal within thirty (30) days after completion of the analytical services. In no event shall Cardinal be liable for material or consequential damages, including, without limitation, business interruptions, loss of use, or loss of profits incurred by client, its subsidiaries, affiliates or successors arising out of or related to the performance of the services hereunder by Cardinal, regardless of whether such claim is based upon any of the above stated causes or otherwise. Results made only to the samples identified above. This report shall not be reproduced, copied or in full with written approval of Cardinal Laboratories.



Celey D. Keene, Lab Director/Quality Manager



PHONE (575) 393-2326 • 101 E. MARLAND • HOBBS, NM 88240

Analytical Results For:

REPUBLIC BACKHOE SERVICES
ERIC GARCIA
47 E. DICKENS RD
LOVINGTON NM, 88260
Fax To: NONE

Received: 03/24/2017
Reported: 03/28/2017
Project Name: SHELL ST#3
Project Number: NONE GIVEN
Project Location: TATUM

Sampling Date: 03/23/2017
Sampling Type: Soil
Sampling Condition: Cool & Intact
Sample Received By: Tamara Oldaker

Sample ID: SW 20 (H700785-10)

| BTEX 80218 | | mg/kg | | Analyzed By: MS | | | | | |
|----------------|--------|-----------------|------------|-----------------|------|------------|---------------|------|-----------|
| Analyte | Result | Reporting Limit | Analyzed | Method Blank | BS | % Recovery | True Value QC | RPD | Qualifier |
| Benzene* | <0.050 | 0.050 | 03/27/2017 | ND | 1.98 | 98.8 | 2.00 | 5.25 | |
| Toluene* | <0.050 | 0.050 | 03/27/2017 | ND | 1.91 | 95.7 | 2.00 | 5.03 | |
| Ethylbenzene* | <0.050 | 0.050 | 03/27/2017 | ND | 1.91 | 95.5 | 2.00 | 4.71 | |
| Total Xylenes* | <0.150 | 0.150 | 03/27/2017 | ND | 5.44 | 90.7 | 6.00 | 4.67 | |
| Total BTEX | <0.300 | 0.300 | 03/27/2017 | ND | | | | | |

Surrogate: 4-Bromofluorobenzene (PID) 98.8 % 72-148

| Chloride, SM4500Cl-B | | mg/kg | | Analyzed By: HM | | | | | |
|----------------------|--------|-----------------|------------|-----------------|-----|------------|---------------|------|-----------|
| Analyte | Result | Reporting Limit | Analyzed | Method Blank | BS | % Recovery | True Value QC | RPD | Qualifier |
| Chloride | <16.0 | 16.0 | 03/27/2017 | ND | 432 | 108 | 400 | 3.77 | |

| TPH 8015M | | mg/kg | | Analyzed By: MS | | | | | |
|--------------|--------|-----------------|------------|-----------------|-----|------------|---------------|-------|-----------|
| Analyte | Result | Reporting Limit | Analyzed | Method Blank | BS | % Recovery | True Value QC | RPD | Qualifier |
| GRO C6-C10 | <10.0 | 10.0 | 03/27/2017 | ND | 181 | 90.6 | 200 | 0.163 | |
| DRO >C10-C28 | <10.0 | 10.0 | 03/27/2017 | ND | 189 | 94.5 | 200 | 0.743 | |

Surrogate: 1-Chlorooctane 88.6 % 25.1-158

Surrogate: 1-Chlorodecane 92.4 % 26.8-170

Cardinal Laboratories

*=Accredited Analyte

PUBLIC NOTE: Liability and Damages. Cardinal's liability and client's exclusive remedy for any claim arising, whether based in contract or tort, shall be limited to the amount paid by client for analyses. All claims, including those for negligence and any other cause whatsoever shall be deemed waived unless made in writing and received by Cardinal within thirty (30) days after completion of the applicable service. In no event shall Cardinal be liable for incidental or consequential damages, including, without limitation, business interruptions, loss of use, or loss of profits incurred by client. No subsidiaries, affiliates or successors arising out of or related to the performance of the services hereunder by Cardinal, regardless of whether such claim is based upon any of the above stated reasons or otherwise. Results relate only to the samples identified above. This report shall not be reproduced except in full with written approval of Cardinal Laboratories.

Celey D. Keene, Lab Director/Quality Manager



PHONE (575) 393-2326 • 101 E. MARLAND • HOBBS, NM 88240

Analytical Results For:REPUBLIC BACKHOE SERVICES
ERIC GARCIA
47 E. DICKENS RD
LOVINGTON NM, 88260
Fax To: NONEReceived: 03/24/2017
Reported: 03/28/2017
Project Name: SHELL ST#3
Project Number: NONE GIVEN
Project Location: TATUMSampling Date: 03/23/2017
Sampling Type: Soil
Sampling Condition: Cool & Intact
Sample Received By: Tamara Oldaker**Sample ID: W 20 (H700785-11)**

| BTEX 80218 | | mg/kg | | Analyzed By: MS | | | | | |
|----------------|--------|-----------------|------------|-----------------|------|------------|---------------|------|-----------|
| Analyte | Result | Reporting Limit | Analyzed | Method Blank | BS | % Recovery | True Value QC | RPD | Qualifier |
| Benzene* | <0.050 | 0.050 | 03/27/2017 | ND | 1.98 | 98.8 | 2.00 | 5.25 | |
| Toluene* | <0.050 | 0.050 | 03/27/2017 | ND | 1.91 | 95.7 | 2.00 | 5.03 | |
| Ethylbenzene* | <0.050 | 0.050 | 03/27/2017 | ND | 1.91 | 95.5 | 2.00 | 4.71 | |
| Total Xylenes* | <0.150 | 0.150 | 03/27/2017 | ND | 5.44 | 90.7 | 6.00 | 4.67 | |
| Total BTEX | <0.300 | 0.300 | 03/27/2017 | ND | | | | | |

Surrogate: 4-Bromofluorobenzene (PIZ) 97.8 % 72-148

| Chloride, SM4500Cl-B | | mg/kg | | Analyzed By: HM | | | | | |
|----------------------|--------|-----------------|------------|-----------------|-----|------------|---------------|-------|-----------|
| Analyte | Result | Reporting Limit | Analyzed | Method Blank | BS | % Recovery | True Value QC | RPD | Qualifier |
| Chloride | <16.0 | 16.0 | 03/27/2017 | ND | 432 | 108 | 400 | 3.77 | |
| TPH 8015M | | mg/kg | | Analyzed By: MS | | | | | |
| Analyte | Result | Reporting Limit | Analyzed | Method Blank | BS | % Recovery | True Value QC | RPD | Qualifier |
| GRO C6-C10 | <10.0 | 10.0 | 03/27/2017 | ND | 181 | 90.6 | 200 | 0.163 | |
| DRO >C10-C28 | <10.0 | 10.0 | 03/27/2017 | ND | 189 | 94.5 | 200 | 0.743 | |

Surrogate: 1-Chlorooctane 92.6 % 25.1-158

Surrogate: 1-Chlorooctadecane 88.5 % 26.8-170

Cardinal Laboratories

* = Accredited Analyte

NOTE: Liability and Damages: Cardinal's liability and service is limited to the amount paid by client for analysis. All claims, including those for negligence and any other cause whatsoever shall be deemed waived unless made in writing and received by Cardinal within thirty (30) days after completion of the applicable service. In no event shall Cardinal be liable for incidental or consequential damages, including, without limitation, business interruptions, loss of use, or loss of profits incurred by client, its subsidiaries, affiliates or successors arising out of or related to the performance of the services furnished by Cardinal, regardless of whether such claim is based upon any of the above stated reasons or otherwise. Results made only to the samples identified above. This report shall not be reproduced except in full with written approval of Cardinal Laboratories.

Celey D. Keene, Lab Director/Quality Manager



PHONE (575) 393-2326 • 101 E. MARLAND • HOBBS, NM 88240

Analytical Results For:

REPUBLIC BACKHOE SERVICES
ERIC GARCIA
47 E. DICKENS RD
LOVINGTON NM, 88260
Fax To: NONE

Received: 03/24/2017
Reported: 03/28/2017
Project Name: SHELL ST#3
Project Number: NONE GIVEN
Project Location: TATUM

Sampling Date: 03/23/2017
Sampling Type: Soil
Sampling Condition: Cool & Intact
Sample Received By: Tamara Oldaker

Sample ID: NW 20 (H700785-12)

| BTEX 80218 | | mg/kg | | Analyzed By: MS | | | | | |
|----------------|--------|-----------------|------------|-----------------|------|------------|---------------|------|-----------|
| Analyte | Result | Reporting Limit | Analyzed | Method Blank | BS | % Recovery | True Value QC | RPD | Qualifier |
| Benzene* | <0.050 | 0.050 | 03/27/2017 | ND | 1.98 | 98.8 | 2.00 | 5.25 | |
| Toluene* | <0.050 | 0.050 | 03/27/2017 | ND | 1.91 | 95.7 | 2.00 | 5.03 | |
| Ethylbenzene* | <0.050 | 0.050 | 03/27/2017 | ND | 1.91 | 95.5 | 2.00 | 4.71 | |
| Total Xylenes* | <0.150 | 0.150 | 03/27/2017 | ND | 5.44 | 90.7 | 6.00 | 4.67 | |
| Total BTEX | <0.300 | 0.300 | 03/27/2017 | ND | | | | | |

Surrogate: 4-Bromofluorobenzene (PID) 98.6 % 72-148

| Chloride, SM4500Cl-B | | mg/kg | | Analyzed By: HM | | | | | |
|----------------------|--------|-----------------|------------|-----------------|-----|------------|---------------|-------|-----------|
| Analyte | Result | Reporting Limit | Analyzed | Method Blank | BS | % Recovery | True Value QC | RPD | Qualifier |
| Chloride | <16.0 | 16.0 | 03/27/2017 | ND | 432 | 108 | 400 | 0.00 | |
| TPH 8015M | | mg/kg | | Analyzed By: MS | | | | | |
| Analyte | Result | Reporting Limit | Analyzed | Method Blank | BS | % Recovery | True Value QC | RPD | Qualifier |
| GRO C6-C10 | <10.0 | 10.0 | 03/27/2017 | ND | 181 | 90.6 | 200 | 0.163 | |
| DRO >C10-C28 | <10.0 | 10.0 | 03/27/2017 | ND | 189 | 94.5 | 200 | 0.743 | |

Surrogate: 1-Chlorooctane 92.9 % 25.1-158

Surrogate: 1-Chlorooctadecane 96.6 % 26.8-170

Cardinal Laboratories

*=Accredited Analyte

NOTE: Liability and Damages: Cardinal's liability and service are limited to the amount paid by client for analyses. All claims, including those for negligence and any other cause whatsoever shall be deemed waived unless made in writing and received by Cardinal within thirty (30) days after completion of the applicable service. In no event shall Cardinal be liable for incidental or consequential damages, including, without limitation, business interruptions, loss of use, or loss of profits incurred by client, its subsidiaries, affiliates or successors arising out of or related to the performance of the services furnished by Cardinal, regardless of whether such claim is based upon any of the above stated causes or otherwise. Results apply only to the samples identified above. This report shall not be reproduced except in full with written approval of Cardinal Laboratories.

Celey D. Keene, Lab Director/Quality Manager



PHONE (575) 393-2326 • 101 E. MARLAND • HOBBS, NM 88240

Analytical Results For:

REPUBLIC BACKHOE SERVICES
ERIC GARCIA
47 E. DICKENS RD
LOVINGTON NM, 88260
Fax To: NONE

Received: 03/24/2017
Reported: 03/28/2017
Project Name: SHELL ST#3
Project Number: NONE GIVEN
Project Location: TATUM

Sampling Date: 03/23/2017
Sampling Type: Soil
Sampling Condition: Cool & Intact
Sample Received By: Tamara Oldaker

Sample ID: CENTER 20 (H700785-13)

| BTEX 80218 | | mg/kg | | Analyzed By: MS | | | | | |
|----------------|--------|-----------------|------------|-----------------|------|------------|---------------|------|-----------|
| Analyte | Result | Reporting Limit | Analyzed | Method Blank | BS | % Recovery | True Value QC | RPD | Qualifier |
| Benzene* | <0.050 | 0.050 | 03/28/2017 | ND | 1.98 | 98.8 | 2.00 | 5.25 | |
| Toluene* | <0.050 | 0.050 | 03/28/2017 | ND | 1.91 | 95.7 | 2.00 | 5.03 | |
| Ethylbenzene* | <0.050 | 0.050 | 03/28/2017 | ND | 1.91 | 95.5 | 2.00 | 4.71 | |
| Total Xylenes* | <0.150 | 0.150 | 03/28/2017 | ND | 5.44 | 90.7 | 6.00 | 4.67 | |
| Total BTEX | <0.300 | 0.300 | 03/28/2017 | ND | | | | | |

Surrogate: 4-Bromofluorobenzene (PID) 98.1 % 72-148

| Chloride, SM4500Cl-B | | mg/kg | | Analyzed By: HM | | | | | |
|----------------------|--------|-----------------|------------|-----------------|-----|------------|---------------|-------|-----------|
| Analyte | Result | Reporting Limit | Analyzed | Method Blank | BS | % Recovery | True Value QC | RPD | Qualifier |
| Chloride | <16.0 | 16.0 | 03/27/2017 | ND | 432 | 108 | 400 | 0.00 | |
| TPH 8015M | | mg/kg | | Analyzed By: MS | | | | | |
| Analyte | Result | Reporting Limit | Analyzed | Method Blank | BS | % Recovery | True Value QC | RPD | Qualifier |
| GRO C6-C10 | <10.0 | 10.0 | 03/27/2017 | ND | 181 | 90.6 | 200 | 0.163 | |
| DRO >C10-C28 | <10.0 | 10.0 | 03/27/2017 | ND | 189 | 94.5 | 200 | 0.743 | |

Surrogate: 1-Chlorooctane 82.9 % 25.1-158

Surrogate: 1-Chlorodecane 84.3 % 26.8-170

Cardinal Laboratories

*=Accredited Analyte

NOTE: Liability and Damages: Cardinal's liability and service are limited to any claim arising, whether based in contract or tort, that is limited to the amount paid to client for analysis. All claims, including those for negligence and any other cause whatsoever shall be deemed waived unless made in writing and received by Cardinal within thirty (30) days after completion of the applicable service. In no event shall Cardinal be liable for incidental or consequential damages, including, without limitation, business interruptions, loss of use, or loss of profits incurred by client, its subsidiaries, affiliates or successors arising out of or resulting from the performance of the services rendered by Cardinal, regardless of whether such claim is based upon any of the above stated causes or otherwise. Results made only for the samples identified above. This report shall not be reproduced except in full with written approval of Cardinal Laboratories.

Caley D. Keene, Lab Director/Quality Manager

Notes and Definitions

| | |
|-------|---|
| QR-03 | The RPD value for the sample duplicate or MS/MSD was outside of QC acceptance limits due to matrix interference. QC batch accepted based on LCS and/or LCSD recovery and/or RPD values. |
| QM-07 | The spike recovery was outside acceptance limits for the MS and/or MSD. The batch was accepted based on acceptable LCS recovery. |
| ND | Analyte NOT DETECTED at or above the reporting limit |
| RPD | Relative Percent Difference |
| ** | Samples not received at proper temperature of 6°C or below. |
| *** | Insufficient time to reach temperature. |
| - | Chloride by SM4500C-B does not require samples be received at or below 6°C Samples reported on an as received basis (wet) unless otherwise noted on report |

Cardinal Laboratories

*=Accredited Analyte

LABOR 1078: Liability and Damages. Cardinal's liability and client's recourse remedy for any claim arising, whether based in contract or tort, shall be limited to the amount paid by client for analyses. (1) claims, including those for negligence and any other cause whatsoever shall be deemed waived unless made in writing and received by Cardinal within thirty (30) days after completion of the applicable services. In no event shall Cardinal be liable for incidental or consequential damages, including, without limitation, business interruptions, loss of use, or loss of profits incurred by client, its subsidiaries, affiliates or successors arising out of or related to the performance of the services furnished by Cardinal, regardless of whether such claim is based upon any of the above stated causes or otherwise. Results made any to the services identified above. This report shall not be reproduced except in full with written approval of Cardinal Laboratories.



Celey D. Keane, Lab Director/Quality Manager



CHAIN-OF-CUSTODY AND ANALYSIS REQUEST

| | | | | | | | | |
|---|--|---|--------------------|--|--------------|--|-----------------|-------------|
| Company Name: Republic Backhoe Service Project Manager: Eric Gaurer Address: 47 E Dickens Rd City: Livingston State: NM Zip: 88400 Phone #: 575-346-7782 Fax #: 575-346-7782 Project #: Project Name: Shell #1 #3 Project Location: Tatum Sampler Name: Matt Gaurer | | 101 East Marland, Hobbs, NM 88240 (575) 393-2326 FAX (575) 393-2476 | | BILL TO Company: Lead & Street Attn: Joe Tovar Address: P.O. Box 578 City: Roswell State: NM Zip: 88260 Phone #: Fax #: | | ANALYSIS REQUEST | | |
| Lab I.D. #160765 | Sample I.D. #11 W 30 N 30 E 30 Center 30 | (G)RAB OR (C)OMP. # CONTAINERS GROUNDWATER WASTEWATER SOIL OIL SLUDGE OTHER ACID/BASE: ICE / COOL OTHER | MATRIX PRE-SERV | DATE 9/23 | TIME 1:57 | TPH X X | Chloride X X | BTEX X X |
| Relinquished By: [Signature] Time: 3:47 Received By: [Signature] Time: 3:16 | | Delivered By: (Circle One) Sampler - UPS - Bus - Other | | Remarks: Tried to call Customer Twice on 9/20 Sample to 3-24-17 @ 14:00hrs | | Fax Result: <input type="checkbox"/> Yes <input type="checkbox"/> No Add'l Phone #: Add'l Fax #: | | |