

Submit 1 Copy To Appropriate District Office
District I - (575) 393-6161
1625 N. French Dr., Hobbs, NM 88240
District II - (575) 748-1283
811 S. First St., Artesia, NM 88210
District III - (505) 334-6178
1000 Rio Brazos Rd., Aztec, NM 87410
District IV - (505) 476-3460
1220 S. St. Francis Dr., Santa Fe, NM 87505

State of New Mexico
Energy, Minerals and Natural Resources

Form C-103
Revised July 18, 2013

OIL CONSERVATION DIVISION
1220 South St. Francis Dr.
Santa Fe, NM 87505

WELL API NO. 30-025-43083	✓
5. Indicate Type of Lease STATE <input checked="" type="checkbox"/> FEE <input type="checkbox"/>	✓
6. State Oil & Gas Lease No.	
7. Lease Name or Unit Agreement Name Braswell 16 State Com	✓
8. Well Number 703H	✓
9. OGRID Number 7377	✓
10. Pool name or Wildcat *WC-025 G-09 S263327G; Upper Wolfcamp	✓

SUNDRY NOTICES AND REPORTS ON WELLS
(DO NOT USE THIS FORM FOR PROPOSALS TO DRILL OR TO DEEPEN OR PLUG BACK TO A DIFFERENT RESERVOIR. USE "APPLICATION FOR PERMIT" (FORM C-101) FOR SUCH PROPOSALS.)

1. Type of Well: Oil Well ☒ Gas Well ☐ Other ☐ **OCD - HOBBS**

2. Name of Operator
EOG Resources, Inc. ✓ **06/28/2016**

3. Address of Operator
P.O. Box 2267 Midland, TX 79702 **RECEIVED**

4. Well Location
Unit Letter O : 200 feet from the South line and 1880 feet from the East line
Section 16 Township 26S Range 33E NMPM County Lea

11. Elevation (Show whether DR, RKB, RT, GR, etc.)
3289' GR

12. Check Appropriate Box to Indicate Nature of Notice, Report or Other Data

NOTICE OF INTENTION TO:

PERFORM REMEDIAL WORK ☐ PLUG AND ABANDON ☐
TEMPORARILY ABANDON ☐ CHANGE PLANS ☒
PULL OR ALTER CASING ☐ MULTIPLE COMPL ☐
DOWNHOLE COMMINGLE ☐
CLOSED-LOOP SYSTEM ☐
OTHER: ☐

SUBSEQUENT REPORT OF:

REMEDIAL WORK ☐ ALTERING CASING ☐
COMMENCE DRILLING OPNS. ☐ P AND A ☐
CASING/CEMENT JOB ☐
OTHER: ☐

13. Describe proposed or completed operations. (Clearly state all pertinent details, and give pertinent dates, including estimated date of starting any proposed work). SEE RULE 19.15.7.14 NMAC. For Multiple Completions: Attach wellbore diagram of proposed completion or recompletion.

EOG Resources requests an amendment to our approved APD for this well to reflect a change in BHL, casing design, and well name.

Change BHL from 230' FNL & 1650' FEL, 16-26S-33E TO: 2410' FSL & 1651' FEL, 9-26S-33E

Change well name from Braswell 16 State 703H TO: Braswell 16 State Com 703H

Spud Date:

Rig Release Date:

I hereby certify that the information above is true and complete to the best of my knowledge and belief.

SIGNATURE Stan Wagner TITLE Regulatory Analyst DATE 6/27/2016

Type or print name Stan Wagner E-mail address: _____ PHONE: 432-686-3689

For State Use Only

APPROVED BY: [Signature] TITLE Petroleum Engineer DATE 06/28/2016

Conditions of Approval (if any): _____

KZ

Revised Permit Information 6/20/16:

Well Name: Braswell 16 State Com No. 703H

Location:

SL: 200' FSL & 1880' FEL, Section 16, T-26-S, R-33-E, Lea Co., N.M.

BHL: 2410' FSL & 1651' FEL, Section 9, T-26-S, R-33-E, Lea Co., N.M.

Casing Program:

Hole Size	Interval	Csg OD	Weight	Grade	Conn	DF _{min} Collapse	DF _{min} Burst	DF _{min} Tension
14.75"	0 – 875'	10.75"	40.5#	J55	STC	1.125	1.25	1.60
9.875"	0-8,000'	7.625"	29.7#	HCP-110	LTC	1.125	1.25	1.60
8.75"	8,000'-10,800'	7.625"	29.7#	HCP-110	FlushMax III	1.125	1.25	1.60
6.75"	0'-19,769'	5.5"	17#	HCP-110	LTC	1.125	1.25	1.60

Cement Program:

Depth	No. Sacks	Wt. ppg	Yld Ft ³ /ft	Slurry Description
875'	375	13.5	1.73	Class C + 4.0% Bentonite + 0.6% CD-32 + 0.5% CaCl ₂ + 0.25 lb/sk Cello-Flake (TOC @ Surface)
	200	14.8	1.34	Class C + 0.6% FL-62 + 0.25 lb/sk Cello-Flake + 0.2% Sodium Metasilicate
10,800'	550	14.4	1.20	50:50 PozLClass H + 0.25% CPT-20A + 0.40% CPT-49 + 0.20% CPT-35 + 0.80% CPT-16A + 0.25% CPT-503P
	1400	14.8	1.42	Class C + 5% Gypsum + 3% CaCl ₂ + 0.1 gps Plexfoam 7
19,769'	990	14.4	1.34	65:35 Class H + 0.2% C-20 + 0.75% C-41P + 0.05% CSA-1000 + 5% MagOx + 0.35% C-47B (TOC @ 10,300')

Mud Program:

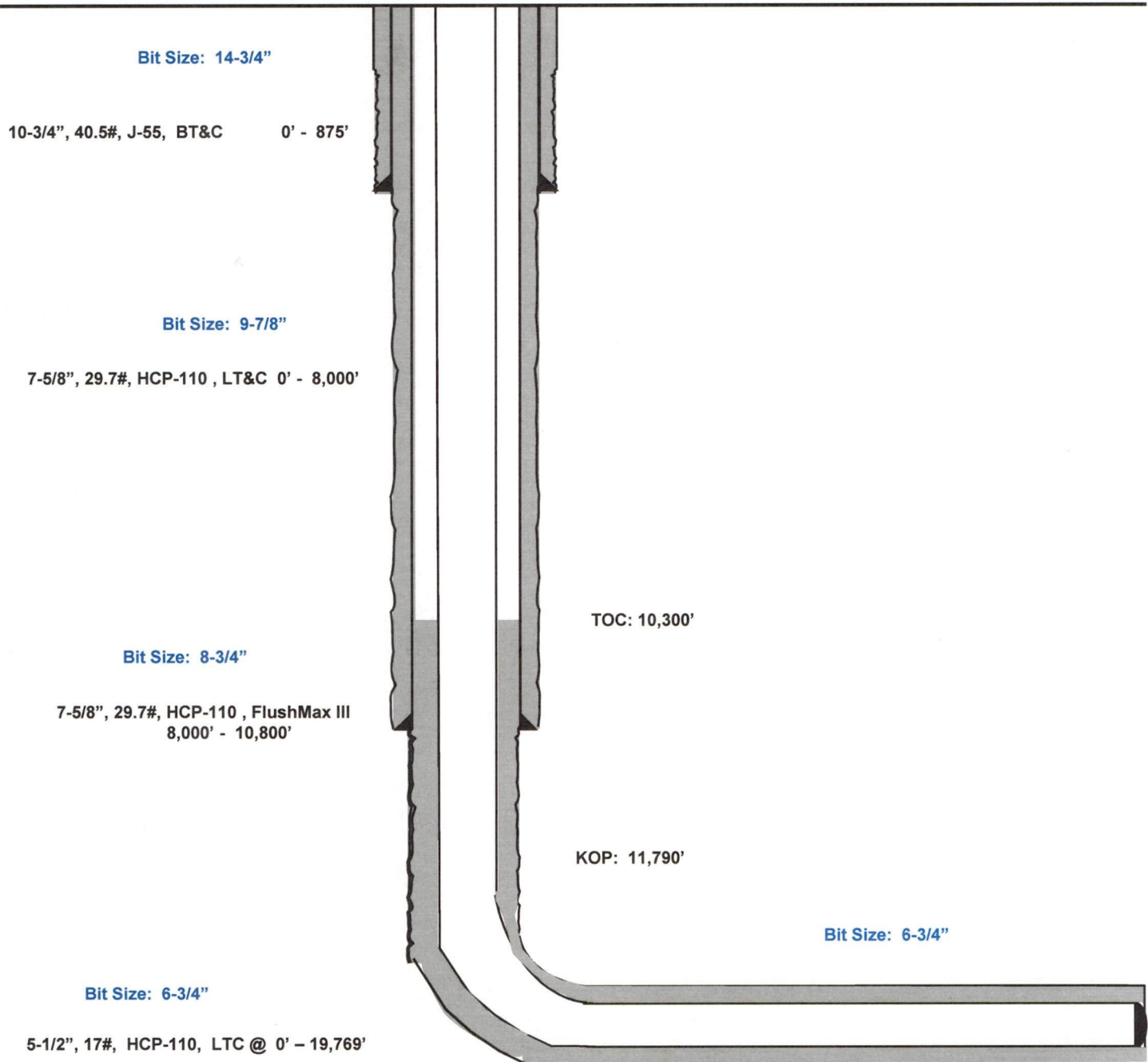
Depth	Type	Weight (ppg)	Viscosity	Water Loss
0 – 875'	Fresh - Gel	8.6-8.8	28-34	N/c
875' – 10,800'	Brine	8.7-9.4	58-68	N/c - 6
10,800' – 11,790'	Oil Base	8.7-9.4	58-68	N/c - 6
11,790' – 19,769' Lateral	Oil Base	9.0-11.5	58-68	N/c - 6

Braswell 16 State Com #703H

200' FSL
1880' FEL
Section 16
T-26-S, R-33-E

Lea County, New Mexico
Proposed Wellbore
Revised 6/20/16
API: 30-025-43083

KB: 3,314'
GL: 3,289'



Lateral: 19,769' MD, 12,370' TVD

BH Location: 2410' FSL & 1651' FEL
Section 9
T-26-S, R-33-E

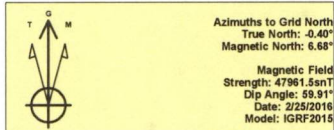


Lea County, NM (NAD 27 NME)

Braswell 16 State Com #703H

H&P 651

Plan #0.3



To convert a Magnetic Direction to a Grid Direction, Add 6.68°
To convert a Magnetic Direction to a True Direction, Add 7.08° East
To convert a True Direction to a Grid Direction, Subtract 0.40°

PROJECT DETAILS: Lea County, NM (NAD 27 NME)

Geodetic System: US State Plane 1927 (Exact solution)
Datum: NAD 1927 (NADCON CONUS)
Ellipsoid: Clarke 1886
Zone: New Mexico East 3001
System Datum: Mean Sea Level

WELL DETAILS: #703H

Ground Level: 3289.0
KB = 25' @ 3314.0usft (H&P 651)
Northing: 377888.00 Easting: 735201.00 Latitude: 32° 2' 11.965 N Longitude: 103° 34' 27.534 W

SECTION DETAILS

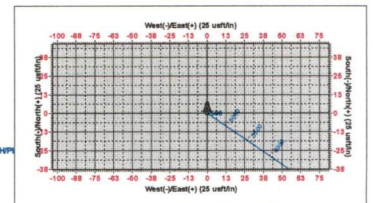
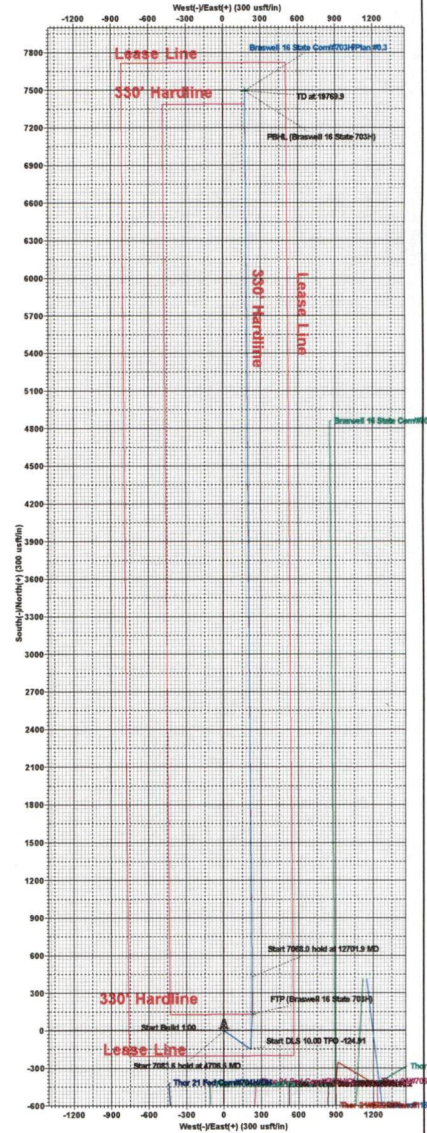
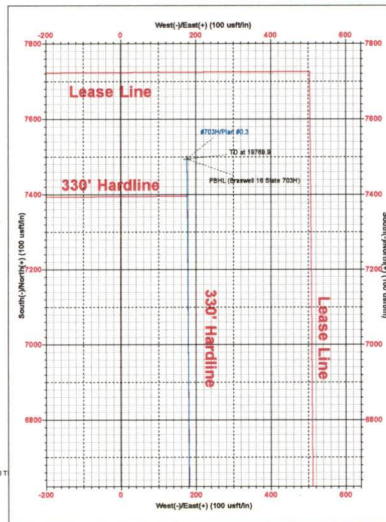
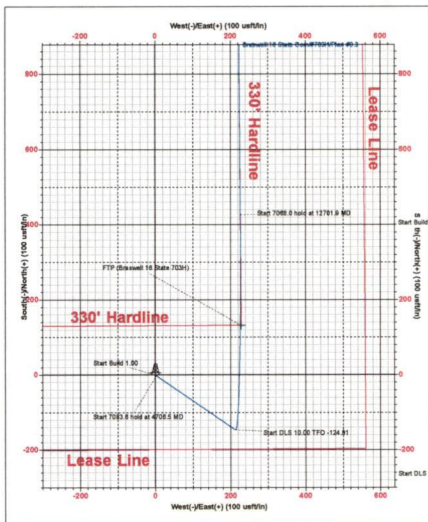
Sec	MD	Inc	Azi	TVD	+N/-S	+E/-W	Dleg	TFace	Vsect	Target
1	0.0	0.00	0.00	0.0	0.0	0.0	0.00	0.00	0.0	
2	4500.0	0.00	0.00	4500.0	0.0	0.0	0.00	0.00	0.0	
3	4706.5	2.07	124.52	4706.5	-2.1	3.1	1.00	124.52	-2.0	
4	11790.1	2.07	124.52	11785.5	-146.8	213.4	0.00	0.00	-141.7	
5	12701.9	90.00	359.59	12370.0	426.2	226.6	10.00	-124.91	431.4	
6	19769.9	90.00	359.59	12370.0	7494.0	176.0	0.00	0.00	7496.1	PBHL (Braswell 16 State 703H)

CASING DETAILS

No casing data is available

WELLBORE TARGET DETAILS (MAP CO-ORDINATES)

Name	TVD	+N/-S	+E/-W	Northing	Easting
PBHL (Braswell 16 State 703H)	12370.0	7484.0	176.0	386582.00	735377.00
FTP (Braswell 16 State 703H)	12370.0	131.0	228.0	378019.00	735430.00



Lea County, NM (NAD 27 NME)
Braswell 16 State Com #703H
H&P 651
Plan #0.3
2/25/2016



EOG Resources - Midland

Lea County, NM (NAD 27 NME)

Braswell 16 State Com

#703H

OH

Plan: Plan #0.3

Standard Planning Report

22 June, 2016



EOG Resources, Inc.
Planning Report

Database:	EDM 5000.1 Single User Db	Local Co-ordinate Reference:	Well #703H
Company:	EOG Resources - Midland	TVD Reference:	KB = 25' @ 3314.0usft (H&P 651)
Project:	Lea County, NM (NAD 27 NME)	MD Reference:	KB = 25' @ 3314.0usft (H&P 651)
Site:	Braswell 16 State Com	North Reference:	Grid
Well:	#703H	Survey Calculation Method:	Minimum Curvature
Wellbore:	OH		
Design:	Plan #0.3		

Project	Lea County, NM (NAD 27 NME)		
Map System:	US State Plane 1927 (Exact solution)	System Datum:	Mean Sea Level
Geo Datum:	NAD 1927 (NADCON CONUS)		
Map Zone:	New Mexico East 3001		

Site	Braswell 16 State Com				
Site Position:		Northing:	378,303.00 usft	Latitude:	32° 2' 15.991 N
From:	Map	Easting:	736,347.00 usft	Longitude:	103° 34' 14.187 W
Position Uncertainty:	0.0 usft	Slot Radius:	13-3/16 "	Grid Convergence:	0.40 °

Well	#703H					
Well Position	+N/-S	-415.0 usft	Northing:	377,888.00 usft	Latitude:	32° 2' 11.965 N
	+E/-W	-1,146.0 usft	Easting:	735,201.00 usft	Longitude:	103° 34' 27.534 W
Position Uncertainty		0.0 usft	Wellhead Elevation:	0.0 usft	Ground Level:	3,289.0 usft

Wellbore	OH				
Magnetics	Model Name	Sample Date	Declination (°)	Dip Angle (°)	Field Strength (nT)
	IGRF2015	2/25/2016	7.08	59.91	47,962

Design	Plan #0.3			
Audit Notes:				
Version:	Phase:	PLAN	Tie On Depth:	0.0
Vertical Section:	Depth From (TVD) (usft)	+N/-S (usft)	+E/-W (usft)	Direction (°)
	0.0	0.0	0.0	1.35

Plan Sections										
Measured Depth (usft)	Inclination (°)	Azimuth (°)	Vertical Depth (usft)	+N/-S (usft)	+E/-W (usft)	Dogleg Rate (°/100usft)	Build Rate (°/100usft)	Turn Rate (°/100usft)	TFO (°)	Target
0.0	0.00	0.00	0.0	0.0	0.0	0.00	0.00	0.00	0.00	
4,500.0	0.00	0.00	4,500.0	0.0	0.0	0.00	0.00	0.00	0.00	
4,706.5	2.07	124.52	4,706.5	-2.1	3.1	1.00	1.00	0.00	124.52	
11,790.1	2.07	124.52	11,785.5	-146.8	213.4	0.00	0.00	0.00	0.00	
12,701.9	90.00	359.59	12,370.0	426.2	226.6	10.00	9.64	-13.70	-124.91	
19,769.9	90.00	359.59	12,370.0	7,494.0	176.0	0.00	0.00	0.00	0.00	PBHL (Braswell 16 St



EOG Resources, Inc.

Planning Report

Database:	EDM 5000.1 Single User Db	Local Co-ordinate Reference:	Well #703H
Company:	EOG Resources - Midland	TVD Reference:	KB = 25' @ 3314.0usft (H&P 651)
Project:	Lea County, NM (NAD 27 NME)	MD Reference:	KB = 25' @ 3314.0usft (H&P 651)
Site:	Braswell 16 State Com	North Reference:	Grid
Well:	#703H	Survey Calculation Method:	Minimum Curvature
Wellbore:	OH		
Design:	Plan #0.3		

Planned Survey										
Measured Depth (usft)	Inclination (°)	Azimuth (°)	Vertical Depth (usft)	+N/-S (usft)	+E/-W (usft)	Vertical Section (usft)	Dogleg Rate (°/100usft)	Build Rate (°/100usft)	Turn Rate (°/100usft)	
0.0	0.00	0.00	0.0	0.0	0.0	0.0	0.00	0.00	0.00	
100.0	0.00	0.00	100.0	0.0	0.0	0.0	0.00	0.00	0.00	
200.0	0.00	0.00	200.0	0.0	0.0	0.0	0.00	0.00	0.00	
300.0	0.00	0.00	300.0	0.0	0.0	0.0	0.00	0.00	0.00	
400.0	0.00	0.00	400.0	0.0	0.0	0.0	0.00	0.00	0.00	
500.0	0.00	0.00	500.0	0.0	0.0	0.0	0.00	0.00	0.00	
600.0	0.00	0.00	600.0	0.0	0.0	0.0	0.00	0.00	0.00	
700.0	0.00	0.00	700.0	0.0	0.0	0.0	0.00	0.00	0.00	
800.0	0.00	0.00	800.0	0.0	0.0	0.0	0.00	0.00	0.00	
900.0	0.00	0.00	900.0	0.0	0.0	0.0	0.00	0.00	0.00	
1,000.0	0.00	0.00	1,000.0	0.0	0.0	0.0	0.00	0.00	0.00	
1,100.0	0.00	0.00	1,100.0	0.0	0.0	0.0	0.00	0.00	0.00	
1,200.0	0.00	0.00	1,200.0	0.0	0.0	0.0	0.00	0.00	0.00	
1,300.0	0.00	0.00	1,300.0	0.0	0.0	0.0	0.00	0.00	0.00	
1,400.0	0.00	0.00	1,400.0	0.0	0.0	0.0	0.00	0.00	0.00	
1,500.0	0.00	0.00	1,500.0	0.0	0.0	0.0	0.00	0.00	0.00	
1,600.0	0.00	0.00	1,600.0	0.0	0.0	0.0	0.00	0.00	0.00	
1,700.0	0.00	0.00	1,700.0	0.0	0.0	0.0	0.00	0.00	0.00	
1,800.0	0.00	0.00	1,800.0	0.0	0.0	0.0	0.00	0.00	0.00	
1,900.0	0.00	0.00	1,900.0	0.0	0.0	0.0	0.00	0.00	0.00	
2,000.0	0.00	0.00	2,000.0	0.0	0.0	0.0	0.00	0.00	0.00	
2,100.0	0.00	0.00	2,100.0	0.0	0.0	0.0	0.00	0.00	0.00	
2,200.0	0.00	0.00	2,200.0	0.0	0.0	0.0	0.00	0.00	0.00	
2,300.0	0.00	0.00	2,300.0	0.0	0.0	0.0	0.00	0.00	0.00	
2,400.0	0.00	0.00	2,400.0	0.0	0.0	0.0	0.00	0.00	0.00	
2,500.0	0.00	0.00	2,500.0	0.0	0.0	0.0	0.00	0.00	0.00	
2,600.0	0.00	0.00	2,600.0	0.0	0.0	0.0	0.00	0.00	0.00	
2,700.0	0.00	0.00	2,700.0	0.0	0.0	0.0	0.00	0.00	0.00	
2,800.0	0.00	0.00	2,800.0	0.0	0.0	0.0	0.00	0.00	0.00	
2,900.0	0.00	0.00	2,900.0	0.0	0.0	0.0	0.00	0.00	0.00	
3,000.0	0.00	0.00	3,000.0	0.0	0.0	0.0	0.00	0.00	0.00	
3,100.0	0.00	0.00	3,100.0	0.0	0.0	0.0	0.00	0.00	0.00	
3,200.0	0.00	0.00	3,200.0	0.0	0.0	0.0	0.00	0.00	0.00	
3,300.0	0.00	0.00	3,300.0	0.0	0.0	0.0	0.00	0.00	0.00	
3,400.0	0.00	0.00	3,400.0	0.0	0.0	0.0	0.00	0.00	0.00	
3,500.0	0.00	0.00	3,500.0	0.0	0.0	0.0	0.00	0.00	0.00	
3,600.0	0.00	0.00	3,600.0	0.0	0.0	0.0	0.00	0.00	0.00	
3,700.0	0.00	0.00	3,700.0	0.0	0.0	0.0	0.00	0.00	0.00	
3,800.0	0.00	0.00	3,800.0	0.0	0.0	0.0	0.00	0.00	0.00	
3,900.0	0.00	0.00	3,900.0	0.0	0.0	0.0	0.00	0.00	0.00	
4,000.0	0.00	0.00	4,000.0	0.0	0.0	0.0	0.00	0.00	0.00	
4,100.0	0.00	0.00	4,100.0	0.0	0.0	0.0	0.00	0.00	0.00	
4,200.0	0.00	0.00	4,200.0	0.0	0.0	0.0	0.00	0.00	0.00	
4,300.0	0.00	0.00	4,300.0	0.0	0.0	0.0	0.00	0.00	0.00	
4,400.0	0.00	0.00	4,400.0	0.0	0.0	0.0	0.00	0.00	0.00	
4,500.0	0.00	0.00	4,500.0	0.0	0.0	0.0	0.00	0.00	0.00	
4,600.0	1.00	124.52	4,600.0	-0.5	0.7	-0.5	1.00	1.00	0.00	
4,706.5	2.07	124.52	4,706.5	-2.1	3.1	-2.0	1.00	1.00	0.00	
4,800.0	2.07	124.52	4,799.9	-4.0	5.8	-3.9	0.00	0.00	0.00	
4,900.0	2.07	124.52	4,899.8	-6.1	8.8	-5.9	0.00	0.00	0.00	
5,000.0	2.07	124.52	4,999.8	-8.1	11.8	-7.8	0.00	0.00	0.00	
5,100.0	2.07	124.52	5,099.7	-10.1	14.7	-9.8	0.00	0.00	0.00	
5,200.0	2.07	124.52	5,199.6	-12.2	17.7	-11.8	0.00	0.00	0.00	
5,300.0	2.07	124.52	5,299.6	-14.2	20.7	-13.7	0.00	0.00	0.00	



EOG Resources, Inc.

Planning Report

Database:	EDM 5000.1 Single User Db	Local Co-ordinate Reference:	Well #703H
Company:	EOG Resources - Midland	TVD Reference:	KB = 25' @ 3314.0usft (H&P 651)
Project:	Lea County, NM (NAD 27 NME)	MD Reference:	KB = 25' @ 3314.0usft (H&P 651)
Site:	Braswell 16 State Com	North Reference:	Grid
Well:	#703H	Survey Calculation Method:	Minimum Curvature
Wellbore:	OH		
Design:	Plan #0.3		

Planned Survey									
Measured Depth (usft)	Inclination (°)	Azimuth (°)	Vertical Depth (usft)	+N/-S (usft)	+E/-W (usft)	Vertical Section (usft)	Dogleg Rate (°/100usft)	Build Rate (°/100usft)	Turn Rate (°/100usft)
5,400.0	2.07	124.52	5,399.5	-16.3	23.7	-15.7	0.00	0.00	0.00
5,500.0	2.07	124.52	5,499.4	-18.3	26.6	-17.7	0.00	0.00	0.00
5,600.0	2.07	124.52	5,599.4	-20.4	29.6	-19.7	0.00	0.00	0.00
5,700.0	2.07	124.52	5,699.3	-22.4	32.6	-21.6	0.00	0.00	0.00
5,800.0	2.07	124.52	5,799.2	-24.4	35.5	-23.6	0.00	0.00	0.00
5,900.0	2.07	124.52	5,899.2	-26.5	38.5	-25.6	0.00	0.00	0.00
6,000.0	2.07	124.52	5,999.1	-28.5	41.5	-27.5	0.00	0.00	0.00
6,100.0	2.07	124.52	6,099.1	-30.6	44.4	-29.5	0.00	0.00	0.00
6,200.0	2.07	124.52	6,199.0	-32.6	47.4	-31.5	0.00	0.00	0.00
6,300.0	2.07	124.52	6,298.9	-34.6	50.4	-33.5	0.00	0.00	0.00
6,400.0	2.07	124.52	6,398.9	-36.7	53.3	-35.4	0.00	0.00	0.00
6,500.0	2.07	124.52	6,498.8	-38.7	56.3	-37.4	0.00	0.00	0.00
6,600.0	2.07	124.52	6,598.7	-40.8	59.3	-39.4	0.00	0.00	0.00
6,700.0	2.07	124.52	6,698.7	-42.8	62.3	-41.3	0.00	0.00	0.00
6,800.0	2.07	124.52	6,798.6	-44.9	65.2	-43.3	0.00	0.00	0.00
6,900.0	2.07	124.52	6,898.5	-46.9	68.2	-45.3	0.00	0.00	0.00
7,000.0	2.07	124.52	6,998.5	-48.9	71.2	-47.3	0.00	0.00	0.00
7,100.0	2.07	124.52	7,098.4	-51.0	74.1	-49.2	0.00	0.00	0.00
7,200.0	2.07	124.52	7,198.3	-53.0	77.1	-51.2	0.00	0.00	0.00
7,300.0	2.07	124.52	7,298.3	-55.1	80.1	-53.2	0.00	0.00	0.00
7,400.0	2.07	124.52	7,398.2	-57.1	83.0	-55.1	0.00	0.00	0.00
7,500.0	2.07	124.52	7,498.1	-59.2	86.0	-57.1	0.00	0.00	0.00
7,600.0	2.07	124.52	7,598.1	-61.2	89.0	-59.1	0.00	0.00	0.00
7,700.0	2.07	124.52	7,698.0	-63.2	91.9	-61.1	0.00	0.00	0.00
7,800.0	2.07	124.52	7,797.9	-65.3	94.9	-63.0	0.00	0.00	0.00
7,900.0	2.07	124.52	7,897.9	-67.3	97.9	-65.0	0.00	0.00	0.00
8,000.0	2.07	124.52	7,997.8	-69.4	100.9	-67.0	0.00	0.00	0.00
8,100.0	2.07	124.52	8,097.8	-71.4	103.8	-69.0	0.00	0.00	0.00
8,200.0	2.07	124.52	8,197.7	-73.4	106.8	-70.9	0.00	0.00	0.00
8,300.0	2.07	124.52	8,297.6	-75.5	109.8	-72.9	0.00	0.00	0.00
8,400.0	2.07	124.52	8,397.6	-77.5	112.7	-74.9	0.00	0.00	0.00
8,500.0	2.07	124.52	8,497.5	-79.6	115.7	-76.8	0.00	0.00	0.00
8,600.0	2.07	124.52	8,597.4	-81.6	118.7	-78.8	0.00	0.00	0.00
8,700.0	2.07	124.52	8,697.4	-83.7	121.6	-80.8	0.00	0.00	0.00
8,800.0	2.07	124.52	8,797.3	-85.7	124.6	-82.8	0.00	0.00	0.00
8,900.0	2.07	124.52	8,897.2	-87.7	127.6	-84.7	0.00	0.00	0.00
9,000.0	2.07	124.52	8,997.2	-89.8	130.6	-86.7	0.00	0.00	0.00
9,100.0	2.07	124.52	9,097.1	-91.8	133.5	-88.7	0.00	0.00	0.00
9,200.0	2.07	124.52	9,197.0	-93.9	136.5	-90.6	0.00	0.00	0.00
9,300.0	2.07	124.52	9,297.0	-95.9	139.5	-92.6	0.00	0.00	0.00
9,400.0	2.07	124.52	9,396.9	-98.0	142.4	-94.6	0.00	0.00	0.00
9,500.0	2.07	124.52	9,496.8	-100.0	145.4	-96.6	0.00	0.00	0.00
9,600.0	2.07	124.52	9,596.8	-102.0	148.4	-98.5	0.00	0.00	0.00
9,700.0	2.07	124.52	9,696.7	-104.1	151.3	-100.5	0.00	0.00	0.00
9,800.0	2.07	124.52	9,796.6	-106.1	154.3	-102.5	0.00	0.00	0.00
9,900.0	2.07	124.52	9,896.6	-108.2	157.3	-104.4	0.00	0.00	0.00
10,000.0	2.07	124.52	9,996.5	-110.2	160.2	-106.4	0.00	0.00	0.00
10,100.0	2.07	124.52	10,096.5	-112.2	163.2	-108.4	0.00	0.00	0.00
10,200.0	2.07	124.52	10,196.4	-114.3	166.2	-110.4	0.00	0.00	0.00
10,300.0	2.07	124.52	10,296.3	-116.3	169.2	-112.3	0.00	0.00	0.00
10,400.0	2.07	124.52	10,396.3	-118.4	172.1	-114.3	0.00	0.00	0.00
10,500.0	2.07	124.52	10,496.2	-120.4	175.1	-116.3	0.00	0.00	0.00
10,600.0	2.07	124.52	10,596.1	-122.5	178.1	-118.2	0.00	0.00	0.00
10,700.0	2.07	124.52	10,696.1	-124.5	181.0	-120.2	0.00	0.00	0.00



EOG Resources, Inc.

Planning Report

Database:	EDM 5000.1 Single User Db	Local Co-ordinate Reference:	Well #703H
Company:	EOG Resources - Midland	TVD Reference:	KB = 25' @ 3314.0usft (H&P 651)
Project:	Lea County, NM (NAD 27 NME)	MD Reference:	KB = 25' @ 3314.0usft (H&P 651)
Site:	Braswell 16 State Com	North Reference:	Grid
Well:	#703H	Survey Calculation Method:	Minimum Curvature
Wellbore:	OH		
Design:	Plan #0.3		

Planned Survey									
Measured Depth (usft)	Inclination (°)	Azimuth (°)	Vertical Depth (usft)	+N/-S (usft)	+E/-W (usft)	Vertical Section (usft)	Dogleg Rate (°/100usft)	Build Rate (°/100usft)	Turn Rate (°/100usft)
10,800.0	2.07	124.52	10,796.0	-126.5	184.0	-122.2	0.00	0.00	0.00
10,900.0	2.07	124.52	10,895.9	-128.6	187.0	-124.2	0.00	0.00	0.00
11,000.0	2.07	124.52	10,995.9	-130.6	189.9	-126.1	0.00	0.00	0.00
11,100.0	2.07	124.52	11,095.8	-132.7	192.9	-128.1	0.00	0.00	0.00
11,200.0	2.07	124.52	11,195.7	-134.7	195.9	-130.1	0.00	0.00	0.00
11,300.0	2.07	124.52	11,295.7	-136.8	198.8	-132.0	0.00	0.00	0.00
11,400.0	2.07	124.52	11,395.6	-138.8	201.8	-134.0	0.00	0.00	0.00
11,500.0	2.07	124.52	11,495.5	-140.8	204.8	-136.0	0.00	0.00	0.00
11,600.0	2.07	124.52	11,595.5	-142.9	207.8	-138.0	0.00	0.00	0.00
11,700.0	2.07	124.52	11,695.4	-144.9	210.7	-139.9	0.00	0.00	0.00
11,790.1	2.07	124.52	11,785.5	-146.8	213.4	-141.7	0.00	0.00	0.00
11,800.0	1.70	96.14	11,795.3	-146.9	213.7	-141.8	10.00	-3.65	-287.27
11,850.0	5.09	18.96	11,845.3	-144.9	215.1	-139.8	10.00	6.78	-154.37
11,900.0	9.95	9.29	11,894.8	-138.5	216.6	-133.4	10.00	9.71	-19.33
11,950.0	14.90	5.97	11,943.6	-127.8	217.9	-122.7	10.00	9.90	-6.65
12,000.0	19.87	4.28	11,991.3	-113.0	219.2	-107.8	10.00	9.95	-3.38
12,050.0	24.86	3.25	12,037.6	-94.0	220.5	-88.8	10.00	9.97	-2.07
12,100.0	29.85	2.54	12,082.0	-71.0	221.6	-65.8	10.00	9.98	-1.41
12,150.0	34.84	2.02	12,124.2	-44.3	222.7	-39.1	10.00	9.98	-1.04
12,200.0	39.84	1.62	12,163.9	-14.0	223.6	-8.8	10.00	9.99	-0.81
12,250.0	44.83	1.29	12,200.9	19.6	224.5	24.9	10.00	9.99	-0.65
12,300.0	49.83	1.02	12,234.8	56.4	225.2	61.7	10.00	9.99	-0.55
12,350.0	54.82	0.78	12,265.3	95.9	225.8	101.2	10.00	9.99	-0.47
12,400.0	59.82	0.58	12,292.3	138.0	226.3	143.3	10.00	9.99	-0.42
12,429.9	62.81	0.46	12,306.7	164.3	226.6	169.5	10.00	9.99	-0.38
FTP (Braswell 16 State 703H)									
12,450.0	64.82	0.39	12,315.5	182.3	226.7	187.5	10.00	9.99	-0.37
12,500.0	69.81	0.21	12,334.8	228.4	227.0	233.7	10.00	9.99	-0.35
12,550.0	74.81	0.05	12,350.0	276.0	227.1	281.3	10.00	10.00	-0.33
12,600.0	79.81	359.89	12,361.0	324.8	227.0	330.0	10.00	10.00	-0.31
12,650.0	84.81	359.74	12,367.6	374.3	226.9	379.5	10.00	10.00	-0.30
12,701.9	90.00	359.59	12,370.0	426.2	226.6	431.4	10.00	10.00	-0.30
12,800.0	90.00	359.59	12,370.0	524.2	225.9	529.4	0.00	0.00	0.00
12,900.0	90.00	359.59	12,370.0	624.2	225.2	629.3	0.00	0.00	0.00
13,000.0	90.00	359.59	12,370.0	724.2	224.4	729.3	0.00	0.00	0.00
13,100.0	90.00	359.59	12,370.0	824.2	223.7	829.3	0.00	0.00	0.00
13,200.0	90.00	359.59	12,370.0	924.2	223.0	929.2	0.00	0.00	0.00
13,300.0	90.00	359.59	12,370.0	1,024.2	222.3	1,029.2	0.00	0.00	0.00
13,400.0	90.00	359.59	12,370.0	1,124.2	221.6	1,129.1	0.00	0.00	0.00
13,500.0	90.00	359.59	12,370.0	1,224.2	220.9	1,229.1	0.00	0.00	0.00
13,600.0	90.00	359.59	12,370.0	1,324.2	220.2	1,329.0	0.00	0.00	0.00
13,700.0	90.00	359.59	12,370.0	1,424.2	219.4	1,429.0	0.00	0.00	0.00
13,800.0	90.00	359.59	12,370.0	1,524.2	218.7	1,528.9	0.00	0.00	0.00
13,900.0	90.00	359.59	12,370.0	1,624.2	218.0	1,628.9	0.00	0.00	0.00
14,000.0	90.00	359.59	12,370.0	1,724.2	217.3	1,728.8	0.00	0.00	0.00
14,100.0	90.00	359.59	12,370.0	1,824.2	216.6	1,828.8	0.00	0.00	0.00
14,200.0	90.00	359.59	12,370.0	1,924.2	215.9	1,928.7	0.00	0.00	0.00
14,300.0	90.00	359.59	12,370.0	2,024.2	215.1	2,028.7	0.00	0.00	0.00
14,400.0	90.00	359.59	12,370.0	2,124.2	214.4	2,128.6	0.00	0.00	0.00
14,500.0	90.00	359.59	12,370.0	2,224.2	213.7	2,228.6	0.00	0.00	0.00
14,600.0	90.00	359.59	12,370.0	2,324.2	213.0	2,328.5	0.00	0.00	0.00
14,700.0	90.00	359.59	12,370.0	2,424.2	212.3	2,428.5	0.00	0.00	0.00
14,800.0	90.00	359.59	12,370.0	2,524.2	211.6	2,528.5	0.00	0.00	0.00



EOG Resources, Inc.

Planning Report

Database:	EDM 5000.1 Single User Db	Local Co-ordinate Reference:	Well #703H
Company:	EOG Resources - Midland	TVD Reference:	KB = 25' @ 3314.0usft (H&P 651)
Project:	Lea County, NM (NAD 27 NME)	MD Reference:	KB = 25' @ 3314.0usft (H&P 651)
Site:	Braswell 16 State Com	North Reference:	Grid
Well:	#703H	Survey Calculation Method:	Minimum Curvature
Wellbore:	OH		
Design:	Plan #0.3		

Planned Survey									
Measured Depth (usft)	Inclination (°)	Azimuth (°)	Vertical Depth (usft)	+N/-S (usft)	+E/-W (usft)	Vertical Section (usft)	Dogleg Rate (°/100usft)	Build Rate (°/100usft)	Turn Rate (°/100usft)
14,900.0	90.00	359.59	12,370.0	2,624.2	210.8	2,628.4	0.00	0.00	0.00
15,000.0	90.00	359.59	12,370.0	2,724.2	210.1	2,728.4	0.00	0.00	0.00
15,100.0	90.00	359.59	12,370.0	2,824.2	209.4	2,828.3	0.00	0.00	0.00
15,200.0	90.00	359.59	12,370.0	2,924.2	208.7	2,928.3	0.00	0.00	0.00
15,300.0	90.00	359.59	12,370.0	3,024.2	208.0	3,028.2	0.00	0.00	0.00
15,400.0	90.00	359.59	12,370.0	3,124.2	207.3	3,128.2	0.00	0.00	0.00
15,500.0	90.00	359.59	12,370.0	3,224.2	206.6	3,228.1	0.00	0.00	0.00
15,600.0	90.00	359.59	12,370.0	3,324.2	205.8	3,328.1	0.00	0.00	0.00
15,700.0	90.00	359.59	12,370.0	3,424.2	205.1	3,428.0	0.00	0.00	0.00
15,800.0	90.00	359.59	12,370.0	3,524.2	204.4	3,528.0	0.00	0.00	0.00
15,900.0	90.00	359.59	12,370.0	3,624.2	203.7	3,627.9	0.00	0.00	0.00
16,000.0	90.00	359.59	12,370.0	3,724.2	203.0	3,727.9	0.00	0.00	0.00
16,100.0	90.00	359.59	12,370.0	3,824.1	202.3	3,827.8	0.00	0.00	0.00
16,200.0	90.00	359.59	12,370.0	3,924.1	201.5	3,927.8	0.00	0.00	0.00
16,300.0	90.00	359.59	12,370.0	4,024.1	200.8	4,027.8	0.00	0.00	0.00
16,400.0	90.00	359.59	12,370.0	4,124.1	200.1	4,127.7	0.00	0.00	0.00
16,500.0	90.00	359.59	12,370.0	4,224.1	199.4	4,227.7	0.00	0.00	0.00
16,600.0	90.00	359.59	12,370.0	4,324.1	198.7	4,327.6	0.00	0.00	0.00
16,700.0	90.00	359.59	12,370.0	4,424.1	198.0	4,427.6	0.00	0.00	0.00
16,800.0	90.00	359.59	12,370.0	4,524.1	197.3	4,527.5	0.00	0.00	0.00
16,900.0	90.00	359.59	12,370.0	4,624.1	196.5	4,627.5	0.00	0.00	0.00
17,000.0	90.00	359.59	12,370.0	4,724.1	195.8	4,727.4	0.00	0.00	0.00
17,100.0	90.00	359.59	12,370.0	4,824.1	195.1	4,827.4	0.00	0.00	0.00
17,200.0	90.00	359.59	12,370.0	4,924.1	194.4	4,927.3	0.00	0.00	0.00
17,300.0	90.00	359.59	12,370.0	5,024.1	193.7	5,027.3	0.00	0.00	0.00
17,400.0	90.00	359.59	12,370.0	5,124.1	193.0	5,127.2	0.00	0.00	0.00
17,500.0	90.00	359.59	12,370.0	5,224.1	192.2	5,227.2	0.00	0.00	0.00
17,600.0	90.00	359.59	12,370.0	5,324.1	191.5	5,327.1	0.00	0.00	0.00
17,700.0	90.00	359.59	12,370.0	5,424.1	190.8	5,427.1	0.00	0.00	0.00
17,800.0	90.00	359.59	12,370.0	5,524.1	190.1	5,527.0	0.00	0.00	0.00
17,900.0	90.00	359.59	12,370.0	5,624.1	189.4	5,627.0	0.00	0.00	0.00
18,000.0	90.00	359.59	12,370.0	5,724.1	188.7	5,727.0	0.00	0.00	0.00
18,100.0	90.00	359.59	12,370.0	5,824.1	187.9	5,826.9	0.00	0.00	0.00
18,200.0	90.00	359.59	12,370.0	5,924.1	187.2	5,926.9	0.00	0.00	0.00
18,300.0	90.00	359.59	12,370.0	6,024.1	186.5	6,026.8	0.00	0.00	0.00
18,400.0	90.00	359.59	12,370.0	6,124.1	185.8	6,126.8	0.00	0.00	0.00
18,500.0	90.00	359.59	12,370.0	6,224.1	185.1	6,226.7	0.00	0.00	0.00
18,600.0	90.00	359.59	12,370.0	6,324.1	184.4	6,326.7	0.00	0.00	0.00
18,700.0	90.00	359.59	12,370.0	6,424.1	183.7	6,426.6	0.00	0.00	0.00
18,800.0	90.00	359.59	12,370.0	6,524.1	182.9	6,526.6	0.00	0.00	0.00
18,900.0	90.00	359.59	12,370.0	6,624.1	182.2	6,626.5	0.00	0.00	0.00
19,000.0	90.00	359.59	12,370.0	6,724.1	181.5	6,726.5	0.00	0.00	0.00
19,100.0	90.00	359.59	12,370.0	6,824.1	180.8	6,826.4	0.00	0.00	0.00
19,200.0	90.00	359.59	12,370.0	6,924.1	180.1	6,926.4	0.00	0.00	0.00
19,300.0	90.00	359.59	12,370.0	7,024.1	179.4	7,026.3	0.00	0.00	0.00
19,400.0	90.00	359.59	12,370.0	7,124.1	178.6	7,126.3	0.00	0.00	0.00
19,500.0	90.00	359.59	12,370.0	7,224.1	177.9	7,226.2	0.00	0.00	0.00
19,600.0	90.00	359.59	12,370.0	7,324.1	177.2	7,326.2	0.00	0.00	0.00
19,700.0	90.00	359.59	12,370.0	7,424.1	176.5	7,426.2	0.00	0.00	0.00
19,769.9	90.00	359.59	12,370.0	7,494.0	176.0	7,496.1	0.00	0.00	0.00
PBHL (Braswell 16 State 703H)									



EOG Resources, Inc.
Planning Report

Database:	EDM 5000.1 Single User Db	Local Co-ordinate Reference:	Well #703H
Company:	EOG Resources - Midland	TVD Reference:	KB = 25' @ 3314.0usft (H&P 651)
Project:	Lea County, NM (NAD 27 NME)	MD Reference:	KB = 25' @ 3314.0usft (H&P 651)
Site:	Braswell 16 State Com	North Reference:	Grid
Well:	#703H	Survey Calculation Method:	Minimum Curvature
Wellbore:	OH		
Design:	Plan #0.3		

Design Targets									
Target Name - hit/miss target - Shape	Dip Angle (°)	Dip Dir. (°)	TVD (usft)	+N/-S (usft)	+E/-W (usft)	Northing (usft)	Easting (usft)	Latitude	Longitude
FTP (Braswell 16 State ; - plan misses target center by 71.6usft at 12429.9usft MD (12306.7 TVD, 164.3 N, 226.6 E) - Point	0.00	0.00	12,370.0	131.0	229.0	378,019.00	735,430.00	32° 2' 13.245 N	103° 34' 24.863 W
PBHL (Braswell 16 State - plan hits target center - Point	0.00	0.00	12,370.0	7,494.0	176.0	385,382.00	735,377.00	32° 3' 26.111 N	103° 34' 24.877 W