

UNITED STATES
DEPARTMENT OF THE INTERIOR
BUREAU OF LAND MANAGEMENT

APPLICATION FOR PERMIT TO DRILL OR REENTER

OCD - HOBBS
04/09/2020
RECEIVED

FORM APPROVED
OMB No. 1004-0137
Expires: January 31, 2018

1a. Type of work: <input checked="" type="checkbox"/> DRILL <input type="checkbox"/> REENTER			5. Lease Serial No. NMNM138876
1b. Type of Well: <input checked="" type="checkbox"/> Oil Well <input type="checkbox"/> Gas Well <input type="checkbox"/> Other			6. If Indian, Allottee or Tribe Name
1c. Type of Completion: <input type="checkbox"/> Hydraulic Fracturing <input checked="" type="checkbox"/> Single Zone <input type="checkbox"/> Multiple Zone			7. If Unit or CA Agreement, Name and No.
2. Name of Operator MATADOR PRODUCTION COMPANY [228937]			8. Lease Name and Well No. RODNEY ROBINSON FED COM [328112] 103H
3a. Address 5400 LBJ Freeway, Suite 1500, Dallas, TX 75240		3b. Phone No. (include area code) (972) 371-5200	9. API Well No. 30-025-47088
4. Location of Well (Report location clearly and in accordance with any State requirements. *) At surface SWSE / 439 FSL / 1634 FEL / LAT 32.31323 / LONG -103.6082112 At proposed prod. zone LOT 2 / 60 FNL / 2120 FEL / LAT 32.3408975 / LONG -103.6098904			10. Field and Pool, or Exploratory [96228] PRONGHORN/BONE SPRING
14. Distance in miles and direction from nearest town or post office* 28 miles			12. County or Parish LEA
15. Distance from proposed* location to nearest property or lease line, ft. (Also to nearest drig. unit line, if any) 439 feet			13. State NM
16. No of acres in lease 1179.44			17. Spacing Unit dedicated to this well 320.0
18. Distance from proposed location* to nearest well, drilling, completed, applied for, on this lease, ft. 30 feet			20. BLM/BIA Bond No. in file FED: NMB001079
21. Elevations (Show whether DF, KDB, RT, GL, etc.) 3718 feet		22. Approximate date work will start* 11/01/2019	23. Estimated duration 60 days
24. Attachments			

The following, completed in accordance with the requirements of Onshore Oil and Gas Order No. 1, and the Hydraulic Fracturing rule per 43 CFR 3162.3-3 (as applicable)

- | | |
|--|---|
| 1. Well plat certified by a registered surveyor. | 4. Bond to cover the operations unless covered by an existing bond on file (see Item 20 above). |
| 2. A Drilling Plan. | 5. Operator certification. |
| 3. A Surface Use Plan (if the location is on National Forest System Lands, the SUPO must be filed with the appropriate Forest Service Office). | 6. Such other site specific information and/or plans as may be requested by the BLM. |

25. Signature (Electronic Submission)	Name (Printed/Typed) Brian Wood / Ph: (505) 466-8120	Date 08/05/2019
Title President		
Approved by (Signature) (Electronic Submission)	Name (Printed/Typed) Cody Layton / Ph: (575) 234-5959	Date 04/08/2020
Title Assistant Field Manager Lands & Minerals Carlsbad Field Office		

Application approval does not warrant or certify that the applicant holds legal or equitable title to those rights in the subject lease which would entitle the applicant to conduct operations thereon.
Conditions of approval, if any, are attached.

Title 18 U.S.C. Section 1001 and Title 43 U.S.C. Section 1212, make it a crime for any person knowingly and willfully to make to any department or agency of the United States any false, fictitious or fraudulent statements or representations as to any matter within its jurisdiction.

GCP Rec 04/09/2020

SL

(Continued on page 2)

APPROVED WITH CONDITIONS
Approval Date: 04/08/2020

KZ
04/16/2020

*(Instructions on page 2)

PECOS DISTRICT

DRILLING CONDITIONS OF APPROVAL

OPERATOR'S NAME:	Matador Production Company
LEASE NO.:	NMNM138876
WELL NAME & NO.:	Rodney Robinson Federal Com 103H
SURFACE HOLE FOOTAGE:	439'/S & 1634'/E
BOTTOM HOLE FOOTAGE:	60'/S & 2120'/E
LOCATION:	Section 7, T.23 S., R.33 E., NMPM
COUNTY:	Lea County, New Mexico

COA

H2S	<input type="radio"/> Yes	<input checked="" type="radio"/> No	
Potash	<input checked="" type="radio"/> None	<input type="radio"/> Secretary	<input type="radio"/> R-111-P
Cave/Karst Potential	<input checked="" type="radio"/> Low	<input type="radio"/> Medium	<input type="radio"/> High
Variance	<input type="radio"/> None	<input checked="" type="radio"/> Flex Hose	<input type="radio"/> Other
Wellhead	<input type="radio"/> Conventional	<input type="radio"/> Multibowl	<input checked="" type="radio"/> Both
Other	<input type="checkbox"/> 4 String Area	<input type="checkbox"/> Capitan Reef	<input type="checkbox"/> WIPP
Other	<input checked="" type="checkbox"/> Fluid Filled	<input type="checkbox"/> Cement Squeeze	<input type="checkbox"/> Pilot Hole
Special Requirements	<input type="checkbox"/> Water Disposal	<input checked="" type="checkbox"/> COM	<input type="checkbox"/> Unit

A. HYDROGEN SULFIDE

Hydrogen Sulfide (H2S) monitors shall be installed prior to drilling out the surface shoe. If H2S is detected in concentrations greater than 100 ppm, the Hydrogen Sulfide area shall meet Onshore Order 6 requirements, which includes equipment and personnel/public protection items. If Hydrogen Sulfide is encountered, provide measured values and formations to the BLM.

B. CASING

Primary Casing Design:

1. The **13-3/8** inch surface casing shall be set at approximately **1332** feet (a minimum of **25 feet (Lea County)** into the Rustler Anhydrite and above the salt) and cemented to the surface.
 - a. If cement does not circulate to the surface, the appropriate BLM office shall be notified and a temperature survey utilizing an electronic type temperature survey with surface log readout will be used or a cement bond log shall be run to verify the top of the cement. Temperature survey will be run a minimum of six hours after pumping cement and ideally between 8-10 hours after completing the cement job.

- b. Wait on cement (WOC) time for a primary cement job will be a minimum of **8 hours** or 500 pounds compressive strength, whichever is greater. (This is to include the lead cement)
- c. Wait on cement (WOC) time for a remedial job will be a minimum of 4 hours after bringing cement to surface or 500 pounds compressive strength, whichever is greater.
- d. If cement falls back, remedial cementing will be done prior to drilling out that string.

Intermediate casing must be kept fluid filled to meet BLM minimum collapse requirement.

- 2. The **9-5/8** inch intermediate casing shall be set at approximately **4975** feet. The minimum required fill of cement behind the **9-5/8** inch intermediate casing is:

Option 1 (Single Stage):

- Cement to surface. If cement does not circulate see B.1.a, c-d above.

Option 2:

Operator has proposed a DV tool, the depth may be adjusted as long as the cement is changed proportionally. The DV tool may be cancelled if cement circulates to surface on the first stage.

- a. First stage to DV tool: Cement to circulate. If cement does not circulate off the DV tool, contact the appropriate BLM office before proceeding with second stage cement job.
- b. Second stage above DV tool:
 - Cement to surface. If cement does not circulate, contact the appropriate BLM office.

- 3. The minimum required fill of cement behind the **5-1/2** inch production casing is:

Option 1 (Single Stage):

- Cement should tie-back at least **200 feet** into previous casing string. Operator shall provide method of verification.

Option 2:

Operator has proposed a DV tool, the depth may be adjusted as long as the cement is changed proportionally. The DV tool may be cancelled if cement circulates to surface on the first stage.

- a. First stage to DV tool: Cement to circulate. If cement does not circulate off the DV tool, contact the appropriate BLM office before proceeding with second stage cement job.
- b. Second stage above DV tool:
 - Cement should tie-back at least **200 feet** into previous casing string. Operator shall provide method of verification.

C. PRESSURE CONTROL

1. Variance approved to use flex line from BOP to choke manifold. Manufacturer's specification to be readily available. No external damage to flex line. Flex line to be installed as straight as possible (no hard bends).'
- 2.

Option 1:

- a. Minimum working pressure of the blowout preventer (BOP) and related equipment (BOPE) required for drilling below the surface casing shoe shall be **5000 (5M)** psi.

Option 2:

1. Operator has proposed a multi-bowl wellhead assembly. This assembly will only be tested when installed on the surface casing. Minimum working pressure of the blowout preventer (BOP) and related equipment (BOPE) required for drilling below the surface casing shoe shall be **5000 (5M)** psi.
 - a. Wellhead shall be installed by manufacturer's representatives, submit documentation with subsequent sundry.
 - b. If the welding is performed by a third party, the manufacturer's representative shall monitor the temperature to verify that it does not exceed the maximum temperature of the seal.
 - c. Manufacturer representative shall install the test plug for the initial BOP test.
 - d. If the cement does not circulate and one inch operations would have been possible with a standard wellhead, the well head shall be cut off, cementing operations performed and another wellhead installed.
 - e. Whenever any seal subject to test pressure is broken, all the tests in OOGO2.III.A.2.i must be followed.

D. SPECIAL REQUIREMENT (S)

Communitization Agreement

- The operator will submit a Communitization Agreement to the Carlsbad Field Office, 620 E Greene St. Carlsbad, New Mexico 88220, at least 90 days before the anticipated date of first production from a well subject to a spacing order issued by the New Mexico Oil Conservation Division. The Communitization Agreement will include the signatures of all working interest owners in all Federal and Indian leases subject to the Communitization Agreement (i.e., operating rights owners and lessees of record), or certification that the operator has obtained the written signatures of all such owners and will make those signatures available to the BLM immediately upon request.
- If the operator does not comply with this condition of approval, the BLM may take enforcement actions that include, but are not limited to, those specified in 43 CFR 3163.1.
- In addition, the well sign shall include the surface and bottom hole lease numbers. When the Communitization Agreement number is known, it shall also be on the sign.

GENERAL REQUIREMENTS

The BLM is to be notified in advance for a representative to witness:

- a. Spudding well (minimum of 24 hours)
- b. Setting and/or Cementing of all casing strings (minimum of 4 hours)
- c. BOPE tests (minimum of 4 hours)

☒ Chaves and Roosevelt Counties
Call the Roswell Field Office, 2909 West Second St., Roswell NM 88201.
During office hours call (575) 627-0272.
After office hours call (575)

☒ Eddy County
Call the Carlsbad Field Office, 620 East Greene St., Carlsbad, NM 88220,
(575) 361-2822

☒ Lea County
Call the Hobbs Field Station, 414 West Taylor, Hobbs NM 88240, (575)
393-3612

1. Unless the production casing has been run and cemented or the well has been properly plugged, the drilling rig shall not be removed from over the hole without prior approval.
 - a. In the event the operator has proposed to drill multiple wells utilizing a skid/walking rig. Operator shall secure the wellbore on the current well, after installing and testing the wellhead, by installing a blind flange of like pressure rating to the wellhead and a pressure gauge that can be monitored while drilling is performed on the other well(s).
 - b. When the operator proposes to set surface casing with Spudder Rig
 - Notify the BLM when moving in and removing the Spudder Rig.
 - Notify the BLM when moving in the 2nd Rig. Rig to be moved in within 90 days of notification that Spudder Rig has left the location.
 - BOP/BOPE test to be conducted per Onshore Oil and Gas Order No. 2 as soon as 2nd Rig is rigged up on well.
2. Floor controls are required for 3M or Greater systems. These controls will be on the rig floor, unobstructed, readily accessible to the driller and will be operational at all times during drilling and/or completion activities. Rig floor is defined as the area immediately around the rotary table; the area immediately above the substructure on which the draw works are located, this does not include the dog house or stairway area.

3. The record of the drilling rate along with the GR/N well log run from TD to surface (horizontal well – vertical portion of hole) shall be submitted to the BLM office as well as all other logs run on the borehole 30 days from completion. If available, a digital copy of the logs is to be submitted in addition to the paper copies. The Rustler top and top and bottom of Salt are to be recorded on the Completion Report.

A. CASING

1. Changes to the approved APD casing program need prior approval if the items substituted are of lesser grade or different casing size or are Non-API. The Operator can exchange the components of the proposal with that of superior strength (i.e. changing from J-55 to N-80, or from 36# to 40#). Changes to the approved cement program need prior approval if the altered cement plan has less volume or strength or if the changes are substantial (i.e. Multistage tool, ECP, etc.). The initial wellhead installed on the well will remain on the well with spools used as needed.
2. Wait on cement (WOC) for Potash Areas: After cementing but before commencing any tests, the casing string shall stand cemented under pressure until both of the following conditions have been met: 1) cement reaches a minimum compressive strength of 500 psi for all cement blends, 2) until cement has been in place at least 24 hours. WOC time will be recorded in the driller's log.
3. Wait on cement (WOC) for Water Basin: After cementing but before commencing any tests, the casing string shall stand cemented under pressure until both of the following conditions have been met: 1) cement reaches a minimum compressive strength of 500 psi at the shoe, 2) until cement has been in place at least 8 hours. WOC time will be recorded in the driller's log. See individual casing strings for details regarding lead cement slurry requirements.
4. Provide compressive strengths including hours to reach required 500 pounds compressive strength prior to cementing each casing string. Have well specific cement details onsite prior to pumping the cement for each casing string.
5. No pea gravel permitted for remedial or fall back remedial without prior authorization from the BLM engineer.
6. On that portion of any well approved for a 5M BOPE system or greater, a pressure integrity test of each casing shoe shall be performed. Formation at the shoe shall be tested to a minimum of the mud weight equivalent anticipated to control the formation pressure to the next casing depth or at total depth of the well. This test shall be performed before drilling more than 20 feet of new hole.
7. If hardband drill pipe is rotated inside casing, returns will be monitored for metal. If metal is found in samples, drill pipe will be pulled and rubber protectors which have a larger diameter than the tool joints of the drill pipe will be installed prior to continuing drilling operations.

8. Whenever a casing string is cemented in the R-111-P potash area, the NMOCD requirements shall be followed.

B. PRESSURE CONTROL

1. All blowout preventer (BOP) and related equipment (BOPE) shall comply with well control requirements as described in Onshore Oil and Gas Order No. 2 and API RP 53 Sec. 17.
2. If a variance is approved for a flexible hose to be installed from the BOP to the choke manifold, the following requirements apply: Check condition of flexible line from BOP to choke manifold, replace if exterior is damaged or if line fails test. Line to be as straight as possible with no hard bends and is to be anchored according to Manufacturer's requirements. The flexible hose can be exchanged with a hose of equal size and equal or greater pressure rating. Anchor requirements, specification sheet and hydrostatic pressure test certification matching the hose in service, to be onsite for review. These documents shall be posted in the company man's trailer and on the rig floor.
3. 5M or higher system requires an HCR valve, remote kill line and annular to match. The remote kill line is to be installed prior to testing the system and tested to stack pressure.
4. If the operator has proposed a multi-bowl wellhead assembly in the APD. The following requirements must be met:
 - a. Wellhead shall be installed by manufacturer's representatives, submit documentation with subsequent sundry.
 - b. If the welding is performed by a third party, the manufacturer's representative shall monitor the temperature to verify that it does not exceed the maximum temperature of the seal.
 - c. Manufacturer representative shall install the test plug for the initial BOP test.
 - d. Whenever any seal subject to test pressure is broken, all the tests in OOGO2.III.A.2.i must be followed.
 - e. If the cement does not circulate and one inch operations would have been possible with a standard wellhead, the well head shall be cut off, cementing operations performed and another wellhead installed.
5. The appropriate BLM office shall be notified a minimum of 4 hours in advance for a representative to witness the tests.
 - a. In a water basin, for all casing strings utilizing slips, these are to be set as soon as the crew and rig are ready and any fallback cement remediation has been done. The casing cut-off and BOP installation can be initiated four hours after installing the slips, which will be approximately six hours after bumping the

plug. For those casing strings not using slips, the minimum wait time before cut-off is eight hours after bumping the plug. BOP/BOPE testing can begin after cut-off or once cement reaches 500 psi compressive strength (including lead when specified), whichever is greater. However, if the float does not hold, cut-off cannot be initiated until cement reaches 500 psi compressive strength (including lead when specified).

- b. In potash areas, for all casing strings utilizing slips, these are to be set as soon as the crew and rig are ready and any fallback cement remediation has been done. For all casing strings, casing cut-off and BOP installation can be initiated at twelve hours after bumping the plug. However, **no tests** shall commence until the cement has had a minimum of 24 hours setup time.
- c. The tests shall be done by an independent service company utilizing a test plug not a cup or J-packer. The operator also has the option of utilizing an independent tester to test without a plug (i.e. against the casing) pursuant to Onshore Order 2 with the pressure not to exceed 70% of the burst rating for the casing. Any test against the casing must meet the WOC time for water basin (8 hours) or potash (24 hours) or 500 pounds compressive strength, whichever is greater, prior to initiating the test (see casing segment as lead cement may be critical item).
- d. The test shall be run on a 5000 psi chart for a 2-3M BOP/BOP, on a 10000 psi chart for a 5M BOP/BOPE and on a 15000 psi chart for a 10M BOP/BOPE. If a linear chart is used, it shall be a one hour chart. A circular chart shall have a maximum 2 hour clock. If a twelve hour or twenty-four hour chart is used, tester shall make a notation that it is run with a two hour clock.
- e. The results of the test shall be reported to the appropriate BLM office.
- f. All tests are required to be recorded on a calibrated test chart. A copy of the BOP/BOPE test chart and a copy of independent service company test will be submitted to the appropriate BLM office.
- g. The BOP/BOPE test shall include a low pressure test from 250 to 300 psi. The test will be held for a minimum of 10 minutes if test is done with a test plug and 30 minutes without a test plug. This test shall be performed prior to the test at full stack pressure.
- h. BOP/BOPE must be tested by an independent service company within 500 feet of the top of the Wolfcamp formation if the time between the setting of the intermediate casing and reaching this depth exceeds 20 days. This test does not exclude the test prior to drilling out the casing shoe as per Onshore Order No. 2.

C. DRILLING MUD

Mud system monitoring equipment, with derrick floor indicators and visual and audio alarms, shall be operating before drilling into the Wolfcamp formation, and shall be used until production casing is run and cemented.

D. WASTE MATERIAL AND FLUIDS

All waste (i.e. drilling fluids, trash, salts, chemicals, sewage, gray water, etc.) created as a result of drilling operations and completion operations shall be safely contained and disposed of properly at a waste disposal facility. No waste material or fluid shall be disposed of on the well location or surrounding area.

Porto-johns and trash containers will be on-location during fracturing operations or any other crew-intensive operations.

NMK04022020



U.S. Department of the Interior
BUREAU OF LAND MANAGEMENT

Operator Certification Data Report

04/08/2020

Operator Certification

I hereby certify that I, or someone under my direct supervision, have inspected the drill site and access route proposed herein; that I am familiar with the conditions which currently exist; that I have full knowledge of state and Federal laws applicable to this operation; that the statements made in this APD package are, to the best of my knowledge, true and correct; and that the work associated with the operations proposed herein will be performed in conformity with this APD package and the terms and conditions under which it is approved. I also certify that I, or the company I represent, am responsible for the operations conducted under this application. These statements are

NAME: Brian Wood

Signed on: 07/30/2019

Title: President

Street Address: 37 Verano Looop

City: Santa Fe

State: NM

Zip: 87508

Phone: (505)466-8120

Email address: afmss@permitswest.com

Field Representative

Representative Name:

Street Address:

City:

State:

Zip:

Phone:

Email address:



APD ID: 10400045180

Submission Date: 08/05/2019

Highlighted data
reflects the most
recent changes
[Show Final Text](#)

Operator Name: MATADOR PRODUCTION COMPANY

Well Name: RODNEY ROBINSON FED COM

Well Number: 103H

Well Type: OIL WELL

Well Work Type: Drill

Section 1 - General

APD ID: 10400045180

Tie to previous NOS? N

Submission Date: 08/05/2019

BLM Office: CARLSBAD

User: Brian Wood

Title: President

Federal/Indian APD: FED

Is the first lease penetrated for production Federal or Indian? FED

Lease number: NMNM138876

Lease Acres: 1179.44

Surface access agreement in place?

Allotted?

Reservation:

Agreement in place? NO

Federal or Indian agreement:

Agreement number:

Agreement name:

Keep application confidential? N

Permitting Agent? YES

APD Operator: MATADOR PRODUCTION COMPANY

Operator letter of designation:

Operator Info

Operator Organization Name: MATADOR PRODUCTION COMPANY

Operator Address: 5400 LBJ Freeway, Suite 1500

Zip: 75240

Operator PO Box:

Operator City: Dallas

State: TX

Operator Phone: (972)371-5200

Operator Internet Address: amonroe@matadorresources.com

Section 2 - Well Information

Well in Master Development Plan? NO

Master Development Plan name:

Well in Master SUPO? NO

Master SUPO name:

Well in Master Drilling Plan? NO

Master Drilling Plan name:

Well Name: RODNEY ROBINSON FED COM

Well Number: 103H

Well API Number:

Field/Pool or Exploratory? Field and Pool

Field Name: PRONGHORN

Pool Name: BONE SPRING

Is the proposed well in an area containing other mineral resources? NATURAL GAS,OIL

Operator Name: MATADOR PRODUCTION COMPANY

Well Name: RODNEY ROBINSON FED COM

Well Number: 103H

Is the proposed well in an area containing other mineral resources? NATURAL GAS,OIL

Is the proposed well in a Helium production area? N

Use Existing Well Pad? N

New surface disturbance?

Type of Well Pad: MULTIPLE WELL

Multiple Well Pad Name:

Number: SLOT 3

Well Class: HORIZONTAL

RODNEY ROBINSON

Number of Legs: 1

Well Work Type: Drill

Well Type: OIL WELL

Describe Well Type:

Well sub-Type: INFILL

Describe sub-type:

Distance to town: 28 Miles

Distance to nearest well: 30 FT

Distance to lease line: 439 FT

Reservoir well spacing assigned acres Measurement: 320 Acres

Well plat: RR_103H_C102_etal_071619_20190801111254.pdf

Well work start Date: 11/01/2019

Duration: 60 DAYS

Section 3 - Well Location Table

Survey Type: RECTANGULAR

Describe Survey Type:

Datum: NAD83

Vertical Datum: NAVD88

Survey number: 25116

Reference Datum: GROUND LEVEL

Wellbore	NS-Foot	NS Indicator	EW-Foot	EW Indicator	Twsp	Range	Section	Aliquot/Lot/Tract	Latitude	Longitude	County	State	Meridian	Lease Type	Lease Number	Elevation	MD	TVD	Will this well produce from this lease?
SHL Leg #1	439	FSL	1634	FEL	23S	33E	7	SWSE	32.31323	-103.6082112	LEA	NEW MEXI	NEW MEXI	F	NMNM 138876	3718	0	0	Y
KOP Leg #1	121	FSL	2198	FEL	23S	33E	7	NWSE	32.3123593	-103.6100366	LEA	NEW MEXI	NEW MEXI	F	NMNM 138876	-5153	8922	8871	Y
PPP Leg #1-1	1320	FSL	2120	FEL	23S	33E	7	NWSE	32.315664	-103.609804	LEA	NEW MEXI	NEW MEXI	F	NMNM 126492	-5726	10548	9444	Y

Operator Name: MATADOR PRODUCTION COMPANY

Well Name: RODNEY ROBINSON FED COM

Well Number: 103H

Wellbore	NS-Foot	NS Indicator	EW-Foot	EW Indicator	Twsp	Range	Section	Aliquot/Lot/Tract	Latitude	Longitude	County	State	Meridian	Lease Type	Lease Number	Elevation	MD	TVD	Will this well produce from this lease?
PPP Leg #1-2	121	FSL	2198	FEL	23S	33E	7	SWSE	32.3123593	-103.6100366	HIDA LGO	NEW MEXI	NEW MEXI	F	NMNM 138876	-5081	8850	8799	Y
EXIT Leg #1	60	FNL	2120	FEL	23S	33E	6	2	32.3408975	-103.6098904	LEA	NEW MEXI	NEW MEXI	F	NMNM 138876	-5726	19716	9444	Y
BHL Leg #1	60	FNL	2120	FEL	23S	33E	6	2	32.3408975	-103.6098904	LEA	NEW MEXI	NEW MEXI	F	NMNM 138876	-5726	19716	9444	Y



APD ID: 10400045180

Submission Date: 08/05/2019

Highlighted data
reflects the most
recent changes

Operator Name: MATADOR PRODUCTION COMPANY

Well Name: RODNEY ROBINSON FED COM

Well Number: 103H

[Show Final Text](#)

Well Type: OIL WELL

Well Work Type: Drill

Section 1 - Geologic Formations

Formation ID	Formation Name	Elevation	True Vertical Depth	Measured Depth	Lithologies	Mineral Resources	Producing Formation
506663	RUSTLER	3717	1262	1262	ANHYDRITE	NONE	N
506669	TOP SALT	1942	1775	1775	SALT	NONE	N
506664	CASTILE	292	3425	3425	SALT	NONE	N
506665	BASE OF SALT	-1281	4998	4998	SALT	NONE	N
506662	BELL CANYON	-1319	5036	5036	SANDSTONE	NATURAL GAS, OIL	N
506666	CHERRY CANYON	-2165	5882	5882	SANDSTONE	NATURAL GAS, OIL	N
506670	BRUSHY CANYON	-3501	7218	7218	SANDSTONE	NATURAL GAS, OIL	N
508627	BONE SPRING	-5082	8799	8799	LIMESTONE	NATURAL GAS, OIL	Y

Section 2 - Blowout Prevention

Pressure Rating (PSI): 5M

Rating Depth: 12000

Equipment: A 12,000' 5000-psi BOP stack consisting of 3 rams with 2 pipe rams, 1 blind ram, and one annular preventer will be utilized below surface casing to TD. See attachments for BOP and choke manifold diagrams. An accumulator complying with Onshore Order #2 requirements for the pressure rating of the BOP stack will be present. A rotating head will also be installed as needed.

Requesting Variance? YES

Variance request: Matador requests a variance to have the option of running a multi-bowl wellhead assembly for setting the Intermediate 1 and Production Strings. The BOPs will not be tested again unless any flanges are separated. Matador requests a variance to drill this well using a co-flex line between the BOP and choke manifold. Certification for proposed co-flex hose is attached. The hose is not required by the manufacturer to be anchored. If the specific hose is not available, then one of equal or higher rating will be used. Matador requests a variance to have the option of batch drilling this well with other wells on the same pad. In the event that this well is batch drilled, the wellbore will be secured with a blind flange of like pressure. When the rig returns to this well and BOPs are installed, the operator will perform a full BOP test.

Testing Procedure: BOP will be inspected and operated as required in Onshore Order #2. Kelly cock and sub equipped with a full opening valve sized to fit the drill pipe and collars will be available on the rig floor in the open position. A third party company will test the BOPs. After setting surface casing, a minimum 5M BOPE system will be installed. Test pressures will

Operator Name: MATADOR PRODUCTION COMPANY

Well Name: RODNEY ROBINSON FED COM

Well Number: 103H

be 250 psi low and 5000 psi high with the annular preventer being tested to 250 psi low and 2500 psi high before drilling below surface shoe. In the event that the rig drills multiple wells on the pad and any seal subject to test pressures are broken, a full BOP test will be performed when the rig returns and the 5M BOPE system is re-installed.

Choke Diagram Attachment:

RR_103H_5M_Choke_Manifold_Arrangement_20190805134144.pdf

BOP Diagram Attachment:

RR_103H_5M_BOP_20190805134154.pdf

Section 3 - Casing

Casing ID	String Type	Hole Size	Csg Size	Condition	Standard	Tapered String	Top Set MD	Bottom Set MD	Top Set TVD	Bottom Set TVD	Top Set MSL	Bottom Set MSL	Calculated casing	Grade	Weight	Joint Type	Collapse SF	Burst SF	Joint SF Type	Joint SF	Body SF Type	Body SF
1	SURFACE	17.5	13.375	NEW	API	N	0	1287	0	1287	3718	2431	1287	J-55	54.5	BUTT	1.125	1.125	DRY	1.8	DRY	1.8
2	INTERMEDIATE	12.25	9.625	NEW	API	N	0	5061	0	5061	3718	-1343	5061	J-55	40	BUTT	1.125	1.125	DRY	1.8	DRY	1.8
3	PRODUCTION	8.75	5.5	NEW	API	N	0	19716	0	9444	3718	-5726	19716	P-110	20	OTHER - DWC/C-IS HT Plus	1.125	1.125	DRY	1.8	DRY	1.8

Casing Attachments

Casing ID: 1 **String Type:** SURFACE

Inspection Document:

Spec Document:

Tapered String Spec:

Casing Design Assumptions and Worksheet(s):

RR_103H_Casing_Design_Assumptions_3string_20190805134422.pdf

Operator Name: MATADOR PRODUCTION COMPANY

Well Name: RODNEY ROBINSON FED COM

Well Number: 103H

Casing Attachments

Casing ID: 2 **String Type:**INTERMEDIATE

Inspection Document:

Spec Document:

Tapered String Spec:

Casing Design Assumptions and Worksheet(s):

RR_103H_Casing_Design_Assumptions_3string_20190805134443.pdf

Casing ID: 3 **String Type:**PRODUCTION

Inspection Document:

Spec Document:

Tapered String Spec:

Casing Design Assumptions and Worksheet(s):

RR_103H_Casing_Design_Assumptions_3string_20190805134505.pdf

RR_103H_5.5in_Casing_Specs_20190805134511.PDF

Section 4 - Cement

String Type	Lead/Tail	Stage Tool	Top MD	Bottom MD	Quantity(sx)	Yield	Density	Cu Ft	Excess%	Cement type	Additives
SURFACE	Lead		0	1287	640	1.72	12.5	1101	50	Class C	5% NaCl + LCM
SURFACE	Tail		987	1287	250	14.8	1.38	347	50	Class C	5% NaCl + LCM
INTERMEDIATE	Lead		0	4061	940	2.13	12.6	2004	50	Class C	Bentonite + 1% CaCL2 + 8% NaCl + LCM
INTERMEDIATE	Tail		4061	5061	370	14.8	1.38	504	50	Class C	5% NaCl + LCM

Operator Name: MATADOR PRODUCTION COMPANY

Well Name: RODNEY ROBINSON FED COM

Well Number: 103H

String Type	Lead/Tail	Stage Tool	Top MD	Bottom MD	Quantity(sx)	Yield	Density	Cu Ft	Excess%	Cement type	Additives
PRODUCTION	Lead		4861	8442	500	2.22	11.5	1113	25	Class H	Fluid Loss + Dispersant + Retarder + LCM
PRODUCTION	Tail		8422	1971 6	2650	13.2	1.35	3576	25	Class H	Fluid Loss + Dispersant + Retarder + LCM

Section 5 - Circulating Medium

Mud System Type: Closed

Will an air or gas system be Used? NO

Description of the equipment for the circulating system in accordance with Onshore Order #2:

Diagram of the equipment for the circulating system in accordance with Onshore Order #2:

Describe what will be on location to control well or mitigate other conditions: All necessary mud products (barite, bentonite, LCM) for weight addition and fluid loss control will be on location at all times. Mud program is subject to change due to hole conditions.

Describe the mud monitoring system utilized: An electronic Pason mud monitoring system complying with Onshore Order 2 will be used.

Circulating Medium Table

Top Depth	Bottom Depth	Mud Type	Min Weight (lbs/gal)	Max Weight (lbs/gal)	Density (lbs/cu ft)	Gel Strength (lbs/100 sqft)	PH	Viscosity (CP)	Salinity (ppm)	Filtration (cc)	Additional Characteristics
1287	5061	OTHER : Brine water	9.5	10.2							
0	1287	OTHER : Spud Mud	8.4	8.8							
5061	1971 6	OTHER : Cut brine/OBM	8.6	9.4							

Operator Name: MATADOR PRODUCTION COMPANY

Well Name: RODNEY ROBINSON FED COM

Well Number: 103H

Section 6 - Test, Logging, Coring

List of production tests including testing procedures, equipment and safety measures:

A 2-person mud logging program will be used from Kick-off point to TD.

No electric logs are planned at this time. GR will be collected through the MWD tools from Intermediate casing to TD. CBL with CCL will be run as far as gravity will let it fall to top of curve.

List of open and cased hole logs run in the well:

CEMENT BOND LOG, GAMMA RAY LOG,

Coring operation description for the well:

No core or drill stem test is planned.

Section 7 - Pressure

Anticipated Bottom Hole Pressure: 2539

Anticipated Surface Pressure: 461

Anticipated Bottom Hole Temperature(F): 148

Anticipated abnormal pressures, temperatures, or potential geologic hazards? NO

Describe:

Contingency Plans geohazards description:

Contingency Plans geohazards attachment:

Hydrogen Sulfide drilling operations plan required? YES

Hydrogen sulfide drilling operations plan:

RR_Slot34_H2S_Plan_20190805134753.pdf

Section 8 - Other Information

Proposed horizontal/directional/multi-lateral plan submission:

RR_103H_horizontal_plan_20190805134807.pdf

Other proposed operations facets description:

Other proposed operations facets attachment:

RR_103H_drill_plan_20190805134815.pdf

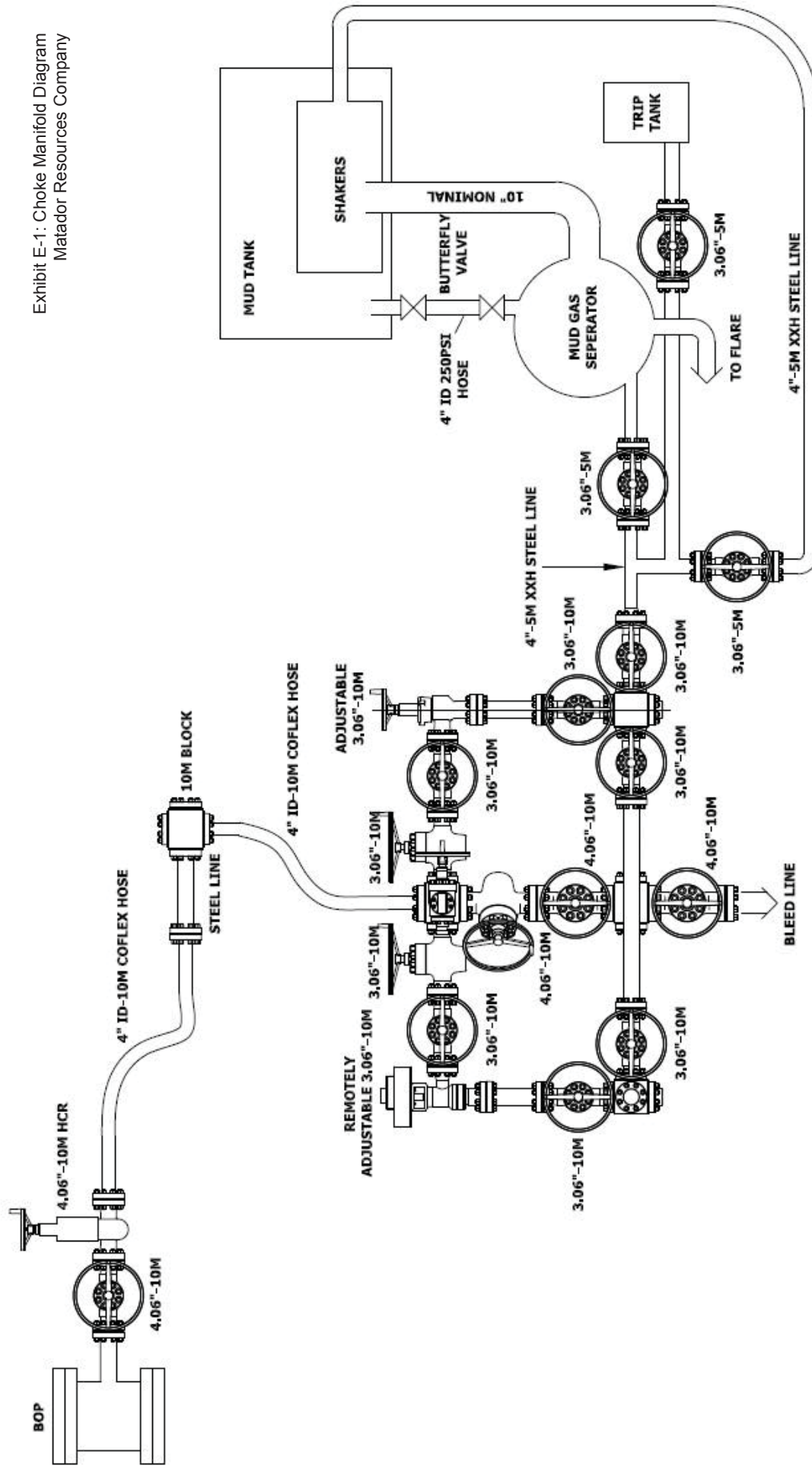
RR_Slot34_CoFlex_Certs_20190805134831.pdf

RR_103H_3String_Wellhead_Diagram_20190805134849.pdf

RR_103H_anti_collision_report_20190805134855.pdf

Other Variance attachment:

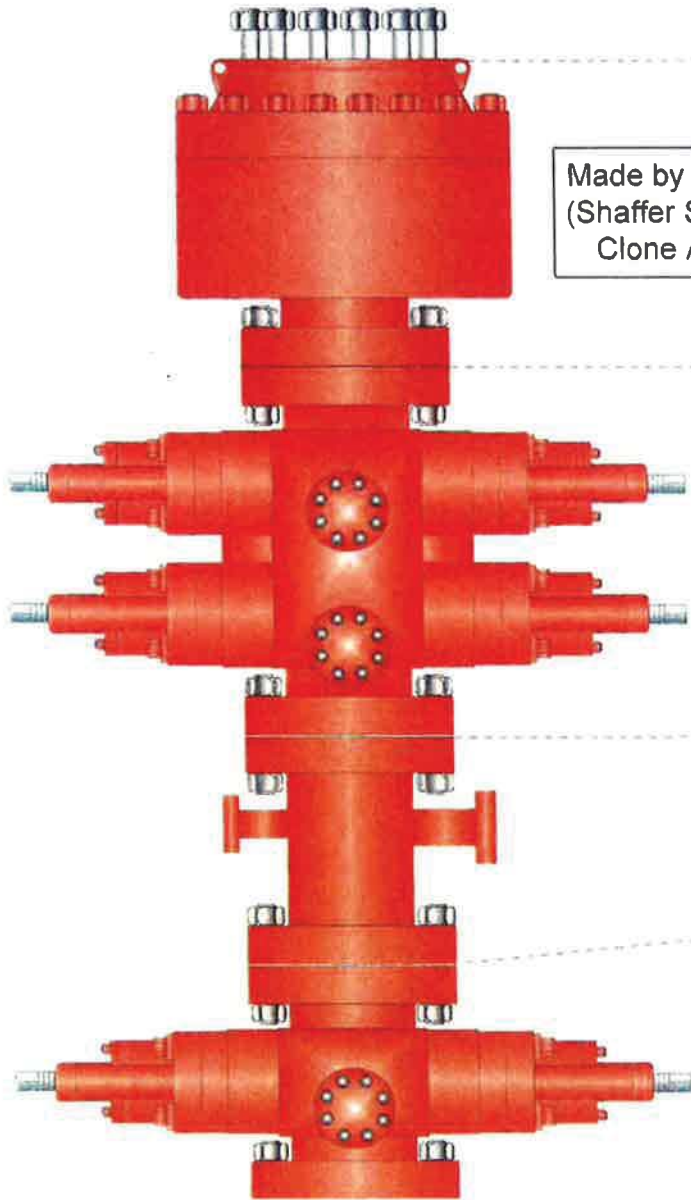
Exhibit E-1: Choke Manifold Diagram
Matador Resources Company

[illegible]



PATTERSON-UTI
Well Control

RIG: 297



Made by Cameron
(Shaffer Spherical)
Clone Annular

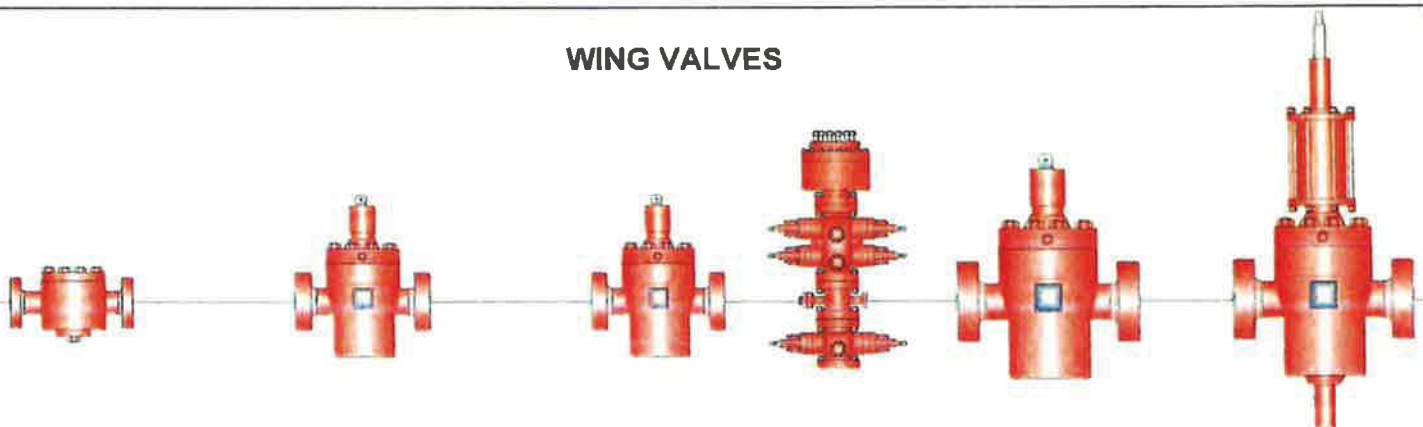
PATTERSON-UTI # PS2-628
STYLE: New Shaffer Spherical
BORE 13 5/8" PRESSURE 5,000
HEIGHT: 48 1/2" WEIGHT: 13,800 lbs

PATTERSON-UTI # PC2-128
STYLE: New Cameron Type U
BORE 13 5/8" PRESSURE 10,000
RAMS: TOP 5" Pipe BTM Blinds
HEIGHT: 66 5/8" WEIGHT: 24,000 lbs

Length 40" Outlets 4" 10M
DSA 4" 10M x 2" 10M

PATTERSON-UTI # PC2-228
STYLE: New Cameron Type U
BORE 13 5/8" PRESSURE 10,000
RAMS: 5" Pipe
HEIGHT: 41 5/8" WEIGHT: 13,000 lbs

WING VALVES



2" Check Valve

2" Manual Valve

2" Manual Valve

4" Manual Valve

4" Hydraulic Valve

Hydrogen Sulfide Drilling
Operations Plan
Matador Resources

1 H2S safety instructions to the following:

- Characteristics of H2S
- Physical effects and hazards
- Principal and operation of H2S detectors, warning system and briefing areas
- Evacuation procedures, routes and first aid
- Proper use of safety equipment & life support systems
- Essential personnel meeting medical evaluation criteria will receive additional training on the proper use of 30min pressure demand air packs

2 H2S Detection and Alarm Systems:

- H2S sensor/detectors to be located on the drilling rig floor, in the base of the sub structure / cellar area, on the mud pits in the shale shaker area. Additional H2S detectors may be placed as deemed necessary
- An audio alarm system will be installed on the derrick floor and in the doghouse

3 Windsocks and / Wind Streamers:

- Windsocks at mud pit area should be high enough to be visible
- Windsock on the rig floor and / top of doghouse should be high enough to be visible

4 Condition Flags and Signs:

- Warning sign on access road to location
- Flags to be displayed on sign at entrance to location
 - Green Flag – Normal Safe Operation Condition
 - Yellow Flag – Potential Pressure and Danger
 - Red Flag – Danger (H2S present in dangerous concentrations) Only H2S trained personnel admitted on location

5 Well Control Equipment:

- See Exhibit E-1

6 Communication:

- While working under masks chalkboards will be used for communications
- Hand signals will be used where chalk board is inappropriate
- Two way radio will be used to communicate off location in case of emergency help is required. In most cases cellular telephones will be available at most drilling foreman's trailer or living quarters.

7 Drilling Stem Testing:

- No DST cores are planned at this time

8 Drilling contractor supervisor will be required to be familiar with the effects H₂S has on tubulars good and other mechanical equipment

9 If H₂S is encountered, mud system will be altered if necessary to maintain control of formation. A mud gas separator will be brought into service along with H₂S scavengers if necessary

11 Emergency Contacts

- See exhibit E-6

HYDROGEN SULFIDE CONTINGENCY PLAN Drilling, Testing, & Completion

MRC ENERGY CO.

Reviewers

----- Operations Manager
----- Operations Supt.
----- Staff RES
----- Field Supt.
Blake Hermes---Engineering

H2S Contingency Plan # 0165

Revision# 0

This H2S Contingency Plan is subject to updating

Effective date: July 8, 2015

TABLE OF CONTENTS

I.	INTRODUCTION	3
II.	PURPOSE	4
A.	Operating Procedures	5
B.	Procedures to be Initiated Prior to reaching H2S Contingency Plan Compliance	6
C.	Drilling Below Contingency Plan Depth	7
D.	Procedures program	7
III.	CONDITIONS & H₂S EMERGENCY PROCEDURES	10
A.	Definition of Operational “Conditions”	10
B.	H₂S Emergency Procedures; In Scope Personnel	12
C.	Instructions for Igniting the Well	16
D.	Coring	17
E.	Normal Operations	18
IV.	SAFETY EQUIPMENT	21
V.	TOXICITY OF VARIOUS GASES	23
VI.	PROPERTIES OF GASES	24
VII.	TREATMENT PROCEDURES FOR H₂S POISONING	25
VIII.	BREATHING AIR EQUIPMENT DRILLS ON/OFF DUTY	26
IX.	HYDROGEN SULFIDE TRAINING CURRICULUM	27
X.	FIT TEST	29
XI.	H₂S EQUIPMENT LIST	30
XII.	EMERGENCY PHONE NUMBERS	32
XIII.	EVACUATION OF GENERAL PUBLIC	37
XIV.	SEPCO EMERGENCY PHONE NUMBERS AND DIRECTIONS TO WELL SITE	38
XV.	ROE MAP (RADIUS OF EXPOSURE)	39
XVI.	RESIDENCE LIST WITHIN ROE	40

INTRODUCTION

The H₂S equipment will be rigged up 2 days prior to reaching a potential H₂S containing zone. Drilling into any potential H₂S zone shall not commence until the on-site MRC Drilling Supervisor has confirmed this plan in place.

The onsite Drilling Foreman will give Total Safety one week (7 days) notice to prepare for rig up of H₂S equipment)

To be effective, the plan requires the cooperation and effort of each person participating in the drilling of an H₂S well. Each person must know his/her responsibilities and all emergency and safety procedures. He/she should thoroughly understand and be able to use with accuracy, all safety equipment while performing his/her normal duties, if the circumstance should arise. He/she should therefore familiarize himself/herself with the location of all safety equipment and check to see that it is properly stored, easily accessible at all times, and routinely maintained.

It is the intention of MRC ENERGY CO. and the Drilling Contractor to make every effort to provide adequate safeguards against harm to persons on the rig and in the immediate vicinity from the effects of hydrogen sulfide, which may be released into the atmosphere under emergency conditions. However, the initiative rests with the individual in utilizing the safeguards provided. The ideas and suggestions of the individuals involved in the drilling of this well are highly welcomed and act as a fundamental tool for providing the safest working conditions possible.

The drilling representative is required to enforce these procedures. They are set up for your safety and the safety of all others.

II. PURPOSE

It is MRC Energy Co.'s intent to provide a safe working place, not only for its employees, but also for other contractors who are aiding in the drilling of this well. The safety of the general public is of utmost concern. All precautions will be taken to keep a safe working environment and protect the public.

There is a possibility of encountering toxic hydrogen sulfide gas. Safety procedures must be adhered to in order to protect all personnel connected with the operations as well as people living within the area.

The MRC Energy Co. representative will enforce all aspects of the H₂S Contingency Plan. This job will become easier by a careful study of the following pages and training and informing all personnel that will be working on the well, their duties and responsibilities.

A. OPERATING PROCEDURES

DEFINITIONS:

For purpose of this plan, on-site personnel shall be referred to as “In Scope Personnel” or “Out of Scope Personnel”, per the following definitions:

In Scope Personnel – Personnel who will be working or otherwise present in potential H₂S release areas, including the rig floor, cellar, pits, and shaker areas.

Out of Scope Personnel – Personnel who will not be working or Otherwise present in potential H₂S areas. Such personnel include rig Site visitor, delivery and camp services personnel.

GENERAL:

Before this H₂S contingency plan becomes operational, all regularly assigned In Scope Personnel (primarily the MRC, drilling contractor, and certain service personnel,) shall be thoroughly trained in the use of breathing equipment, emergency procedures, and responsibilities. Total Safety Technician or a designee assigned by the MRC Drilling Foreman shall keep a list of all personnel who have been through the on-site H₂S training program at the drill site.

All In Scope Personnel shall be given H₂S training and the steps to be taken during H₂S conditions under which the well may be drilled. General information will be explained about toxic gases, as well as the physiological effects of H₂S and the various classified operating conditions. In addition, the reader will be informed his/her general responsibility concerning safety equipment and emergency procedures.

The Total Safety H₂S Safety Technician or MRC on-site RSE Technician shall make available the H₂S Contingency Plan for all personnel to review.

Without exception, all personnel that arrive on location must proceed directly to and sign-in with the on-site MRC RSE Technician. In Scope Personnel will be required to complete an on-site H₂S training and respirator fit testing before starting work, or produce evidence that they have received equivalent training. Out of Scope Personnel will be required to complete a site H₂S awareness and general safety briefing. This briefing will consist of a H₂S hazard overview, alarm review and required response to alarms.

B. PROCEDURES TO BE INITIATED PRIOR TO H₂S CONTINGENCY PLAN COMPLIANCE:

A list of emergency phone numbers and contacts will be on location and posted at the following locations:

1. MRC ENERGY CO.'S Representative's Office
2. Drilling Contractor's, Toolpusher Office
3. Living Quarters Area

All safety equipment and H₂S related hardware must be set up as required by MRC Energy Co. with regard to location of briefing areas, breathing equipment, etc. All safety equipment must be inspected periodically (at least weekly) with particular attention to resuscitators and breathing equipment.

In Scope Personnel working in the well site area will be assigned breathing apparatus. Operator and drilling contractor personnel required to work in the following areas will be provided with Self Contained Breathing Apparatus:

1. Rig Floor
2. Mud Pits
3. Derrick
4. Shale Shaker
5. Cellar

The Total Safety H₂S Safety Technician will be responsible for rigging up all H₂S continuous monitoring-type detectors. The Total Safety Technician will monitor and bump test the detector units periodically (at least at least once a week to test alarm function during drilling conditions. In the event H₂S is detected, or when drilling in a zone confirmed to contain H₂S, the units shall be bump tested at least once every 24 hours. A bump test/calibration log will be kept on location. All results will be reported to the MRC on-site Drilling Foreman.

All Total Safety H₂S equipment will be maintained and inspected by a Total Safety Technician on at least a Weekly basis.

C. DRILLING BELOW CONTINGENCY PLAN DEPTH

H₂S response drills will be held at least once per week if possible or as often as necessary to acquaint the crews and service company personnel of their responsibilities and the proper procedures to shut-in a well. Initial drills will be performed until crews demonstrate competency donning and working under mask. After the MRC Energy Co.'s representative is satisfied with initial blowout drill procedures, a drill will be conducted weekly with each crew, as necessary. The H₂S Safety Technician or designee will conduct safety talks and maintain the safety equipment, consult and carry out the instructions of the drilling supervisor. All personnel allowed in the well work area during drilling or testing operations will be instructed in the use of breathing equipment until supervisory personnel are satisfied that they are capable of using it.

After familiarization, each person must perform a drill with breathing equipment. The drill should include getting the breathing equipment, donning the breathing apparatus, and performing expected duties for a short period. A record shall be kept of all personnel drilled and the date of the drill. H₂S training records will be kept on location for all personnel.

Rig crews and service company personnel shall be made aware of the location of spare air bottles, resuscitation equipment, portable fire extinguishers, H₂S monitors and detectors. Knowledge of the location of the H₂S monitors and detectors are vital in determining as our gas location and the severity of the emergency conditions.

After any device has initially detected H₂S, all areas of poor ventilation shall be inspected periodically by means of a portable H₂S detector instrument. The buddy system will be utilized. (When an alarm sounds, personnel will don an SCBA, shut the well in, and proceed to SBA for roll call. The H₂S Technician or designee will mask up, with a buddy and will verify source of H₂S and report back to the on-site MRC Foreman.)

D. PROCEDURES PROGRAM

1. Drill Site
 - a. The drilling rig will be located to allow prevailing winds to blow across the reserve pit.
 - b. A Safe Briefing Area will be provided with a breathing air cascade trailer and or 30-minute SCBA's at the Primary Area. Personnel will assemble at the most up-wind station under alarm conditions, or when so ordered by the MRC Energy Co. representative, the Contractor representative, or

the Total Safety H₂S Safety Technician. Windssocks or streamers will be anchored to various strategic places on a pole about 10 feet high, so it is in easy view from the rig floor at all times.

- c. Warning signs will be posted on the perimeters. "No Smoking" signs will be posted by MRC Energy Co.as well.
- d. One multi-channel automatic H₂S monitor will be provided by Total Safety and the detector heads will be at the shale shaker, bell nipple, mud pits, rig floor, and quarter's area. The monitor will be located inside HSE or Company man trailer. Should the alarm be shut off to silence the sirens, the blinker light must continue to warn of H₂S presence. The Total Safety H₂S Safety Technician or designee will continuously monitor the detectors and will reactivate the alarm if H₂S concentrations increase to a dangerous level.
- e. A method of escape will be open at all times.
- f. If available, land line telephone service will be provided or cell phones provided. (Primary communications provided)
- g. A rig communication system will be provided, as needed.
- h. A gas trap, choke manifold, and degasser will be installed.
- i. A kill line, securely anchored and of ample strength, will be laid to the well-head from a safe location. This line is to be used only in an emergency.

General

- a. The MRC Energy Co. representative and/or the Contractor's Toolpusher will be available at all times. The drilling supervisor, while on duty, will have complete charge of the rig and location operations and will take whatever action is deemed necessary to insure personnel safety, to protect the well, and to prevent damage.
- b. A Mud Engineer will be on location at all times when drilling takes place at the depth H₂S may be expected. The mud engineer will be able to verify the presence or absence of H₂S.

III. CONDITIONS AND EMERGENCY PROCEDURES

A. DEFINITION OF OPERATIONAL “CONDITIONS”

CONDITION I	“POSSIBLE DANGER”
Warning Flags	Green
Alarms	No Alarm. Less than 10 ppm
Characterized By:	Drilling operations in zones that may contain hydrogen sulfide. This condition remains in effect unless H ₂ S is detected and it becomes necessary to go to Condition II.
General Action:	<ol style="list-style-type: none"> Be alert for a condition change Check all safety equipment for availability and proper functioning. Perform all drills for familiarization and proficiency.
CONDITION II	“MODERATE DANGER”
Warning Flags	Yellow
Alarms:	Actuates at 10 ppm. Continuous flashing light.
Characterized By:	Drilling operations in zones containing hydrogen sulfide. This condition will remain in effect until adding chemicals to the mud system neutralizes the hydrogen sulfide or it becomes necessary to go to Condition III.
General Action:	<ol style="list-style-type: none"> Be alert for a condition change <p>WHEN DRILLING AHEAD - Driller and designated crewmember will don 30 min SCBA, shut-in the well and immediately proceed to the Safe Briefing Area.</p> <p>WHEN TRIPPING – Driller and two designated crewmembers will don 30 min SCBA, shut in the well and immediately proceed to the Safe Briefing Area. The Derrickman will</p>

don a 5-minute escape pack, descend to the rig floor, don a 30-min SCBA (if necessary) and immediately proceed to the Safe Briefing Area.

- c. All In Scope Personnel will proceed directly to the appropriate Safe Briefing Area.
- d. Remain in safe briefing area, take roll call and wait for instructions
- e. Contact the Total H2S Technician if not on location.
- f. Personnel shall ensure that their breathing apparatus is properly fitted and operational before entering an H₂S contaminated area to provide assistance to anyone who may be injured or overcome by toxic gases.
- g. All Out of Scope Personnel will report to the appropriate Safe Briefing Area.

CONDITION III “EXTREME DANGER”
Warning Flags Red

Alarms Actuate at 15 ppm. Continuous Sirens and Flashing Lights

Characterized by: Critical well operations which pose an immediate threat of H₂S exposure to on-site personnel and a potential threat to the public.

- General Action:
- a. **WHEN DRILLING AHEAD -**
Driller and designated crewmember will don 30 min SCBA, shut-in the well and immediately proceed to the Safe Briefing Area.
 - WHEN TRIPPING –** Driller and two designated crewmembers will don 30

min SCBA, shut in the well and immediately proceed to the Safe Briefing Area. The Derrickman will don a 5-minute escape pack, descend to the rig floor, don a 30-min SCBA (if necessary) and immediately proceed to the Safe Briefing Area.

- b. All In Scope Personnel should don SCBA if nearby and immediately proceed to Safe Briefing Area. If SCBA is not nearby at time of alarm, DO NOT GO TOWARDS RIG AREA, but proceed directly to the Safe Briefing Area
- c. All out of Scope Personnel shall evacuate the location.
- d. Remain in the Safe Briefing Area, take roll call and wait for instructions.
- e. Contact the Total H2S Technician if not on location.
- f. Personnel shall ensure that their breathing apparatus is properly fitted and operational before entering an H₂S contaminated area to provide assistance to anyone who may be injured or overcome by toxic gases. Use the buddy system.
- g. Remain in safe briefing area, take roll call and wait for instructions.
- h. A cascade breathing air system shall be mobilized and utilized to conduct any additional on rig work required to correct the H₂S release condition.
- i. If well is ignited do not assume area is safe. SO₂ is hazardous and not all H₂S will burn.

H₂S EMERGENCY PROCEDURES; IN SCOPE PERSONNEL

A. Day To Day Drilling Operations

1. Upon discovering a release of H₂S gas in the ambient air by warning alarms or in any other way **Do Not Panic**.
2. Hold your breath donning the nearest Self Contained Breathing Apparatus and rapidly move up or across-wind away from the areas where H₂S sensing devices are in place, to the closest available safe briefing area. Continue to use breathing apparatus until it has been determined that the exposure of H₂S gas in the ambient air no longer exists. **Do Not Panic!**
3. Utilize the “Buddy System”, i.e.; select and pair up each person participating in the drilling of an H₂S well prior to an emergency situation.
4. Help anyone who is overcome or affected by the H₂S gas by taking him/her up-wind out of the contaminated area. (This should be done utilizing an SCBA and with a buddy.)
5. Take necessary steps to confirm the release of the H₂S gas into the ambient air.
 - When an H₂S alarm activates, two designated personnel using the buddy system, while wearing their self contained breathing apparatus, will determine by the read-out on the fixed monitor which sensing device has detected the release of the H₂S gas.
 - They will utilize the hand-held sniffer type device at the particular sensing point disclosed on the fixed monitor to corroborate the fact that H₂S gas has actually been released. This will rule out the possibility of a false alarm. This will be done with a buddy and under mask after reporting to the Safe Briefing Area for roll call and instructions by on-site MRC Foreman.
6. Refer to the Emergency Phone Numbers and call emergency personnel.
7. Take the necessary steps to suppress the release of H₂S gas into the ambient air. Comply with the MRC Energy Co. Representative to physically suppress the release of H₂S gas at the actual release point.

8. Check all of MRC Energy Co.'s monitoring devices and increase gas-monitoring activities with the portable hand-operated H₂S and gas detector units.

Do Not Panic!

The MRC Energy Co. representative will assess the situation and with assistance of the Contractor's Representative and Total Safety's H₂S Safety Technician or on site designee, will assign duties to each person to bring the situation under control.

B. RESPONSIBILITIES OF WELL-SITE PERSONNEL

In the event of a release of potentially hazardous amounts of H₂S, all personnel will immediately don their protective breathing apparatus, the well will be shut in and personnel will proceed upwind to the nearest designated safe briefing area for roll call and instructions by MRC Foreman. Consideration will be given to evacuating Out of Scope Personnel, as situation warrants.

1. MRC ENERGY CO.'S Well-site Representatives

- a. If MRC Energy Co.'s well-site representative is incapacitated or not on location, this responsibility will fall to the Toolpusher/Driller.
- b. Immediately upon assessing the situation, set this plan into Action by initiating the proper procedures to contain the gas and notify the appropriate people and agencies.
- c. Ensure that the alarm area indicated by the fixed H₂S Monitor is checked and verified with a portable H₂S detector. (Safety Technician if on location or MRC assigned designee with a buddy utilizing SCBA's)
- d. Consult Pusher/driller of remedial actions as needed.
- e. Ensure that non-essential personnel proceed to the safe briefing area.
- f. Ensure location entrance barricades are positioned. Keep the number of persons on location to a minimum during hazardous operations.

- g. Consult each contractor, Service Company and all others allowed to enter the site, that H₂S gas may be encountered and the potential hazards that may exist.
- h. Authorize the evacuation of local residents if H₂S threatens Their safety.
- i. Non essential personnel should be evacuated from location if Situation warrants.

2. Toolpusher

- a. Toolpusher/Driller will assume responsibilities of MRC Energy Co.'s well-site representative if that person is incapacitated or not on location.
- b. Ensure that the alarm area indicated by the fixed H₂S monitor is checked and verified with a portable H₂S gas detector. (Alarm area indicated by the monitor will be Checked by the H₂S Technician and a buddy, under mask.) This will be done after checking in and roll call at the Upwind Safe Briefing Area.
- c. Confer with MRC Energy Co.'s well-site representative or superintendent and direct remedial action to suppress the H₂S and control the well.
- d. Ensure that personnel at the safe briefing area are instructed on emergency actions required.
- e. Ensure that personnel at the drill floor area are instructed on emergency actions required.
- f. Ensure that all personnel observe the appropriate safety and emergency procedures.
- g. Ensure that all persons are accounted for and provided emergency assistance as necessary.

3. Mud Engineer

- a. Run a sulfide check on the flowline mud.
- b. Take steps to determine the source of the H₂S and suppress it. Lime and H₂S scavenger shall be added to the mud as necessary.

4. Total H₂S Safety Technician, if on location, or MRC Designee

- a. H₂S Safety Technician or designee don nearest SCBA and report to Safe Briefing Area for roll call, take a buddy masked up and check monitor and verify with a portable H₂S detector the alarm area indicated by the fixed H₂S monitor. Advise the Toolpusher/Driller and MRC Energy Co.'s well-site representative of findings. Record all findings.
- b. If H₂S is flared, check for sulfur dioxide (SO₂) near the flare as necessary. Take hourly readings at different perimeters, log readings and record on location.
- c. Ensure that personnel at the safe briefing area are instructed on emergency actions required.
- d. Ensure that the appropriate warning flags are displayed.
- e. Ensure that all personnel are in S.C.B.A. as necessary.
- f. Ensure that all persons are accounted for and provide emergency assistance as necessary.
- g. Be prepared to evacuate rig if order is issued.

5. General Personnel & Visitors

- a. All In Scope Personnel, if not specifically designated to shut the well in or control the well, shall proceed to the (upwind) safe briefing area. All Out of Scope Personnel shall immediately proceed to the appropriate (upwind) safe briefing area or evacuate the site as conditions warrant.

- b. During any emergency, use the “buddy” system to prevent anyone from entering or being left in a gas area alone, even wearing breathing apparatus.
- c. Provide assistance to anyone who may be injured or overcome by toxic gases. Personnel shall ensure that their breathing apparatus is properly fitted and operational before entering a potentially H₂S contaminated area.
- d. Remain in safe briefing area and wait for instructions.

C. INSTRUCTIONS FOR IGNITING THE WELL

1. The Toolpusher/Driller will confer with MRC Energy Co.’s well-site representative who will secure the approval of the “Texas Wells Delivery Manager, prior to igniting the well, if at all possible.

The Toolpusher/Driller will be responsible for igniting the well in the event of severe well control problems. This decision should be made only as a last resort in situations where it is clear that:

- a. Human life and property are endangered, or
 - b. There is no hope of controlling the well under current conditions.
2. Once the decision has been made, the following procedures should be followed:
 - a. Two people wearing self-contained breathing apparatus will be needed for the actual lighting of the well. They must first establish the flammable perimeter by using an explosimeter. This should be established at 30% to 40% of the lower flammable limits.
 - b. After the flammable perimeter has been established and everyone removed from the area, the ignition team should select a site upwind of the well from which to ignite the well. This site should offer the maximum protection and have a clear path for retreat from the area.

- c. The ignition team should have safety belts and lifeline attached and manned before attempting ignition. If the leak is not ignited on the first attempt, move in 20 to 30 feet and fire again. Continue to monitor with the explosimeter and NEVER fire from an area with over 75% of the Lower Explosive Limit (LEL). If having trouble igniting the well, try firing 40 degrees to 90 degrees on either side of the well.
- d. If ignition is not possible due to the makeup of the gas, the toxic perimeter must be established and evacuation continued until the well is contained.
- e. All personnel must act only as directed by the person in charge of the operations.

NOTE: After the well is ignited, burning hydrogen sulfide (H_2S) will convert to sulfur dioxide (SO_2), which is also a highly toxic gas.

DO NOT ASSUME THE AREA IS SAFE AFTER THE WELL IS IGNITED

D. CORING PROCEDURES

Only essential personnel shall be on the rig floor. Ten (10) stands prior to retrieving core barrel; all personnel on drill floor and in derrick shall confirm self-Contained breathing apparatus available and ready for use.

A Total H₂S Technician will don a SCBA with a buddy assigned from the rig crew, and continuously monitor for H₂S at each connection. Any levels detected will require operations to be shut down and all involved personnel to don SCBAs. Precautions will remain in place until barrel is laid down.

All involved personnel will don SCBAs when removing the inner barrel from the outer barrel. SCBAs can be removed once the absence of H₂S is confirmed by the Total H₂S Technician.

Cores will be appropriately marked and sealed for transportation.

Normal Operations

1. Responsibilities of well-site personnel

a. Well-site Representative

1. Notify H₂S Technician of expected date to reach Contingency Plan implementation depth (Two (2) days prior to reaching suspected H₂S bearing zone) or prior to starting well work.
2. Ensure H₂S Safety Technician completes rig-up procedures prior to reaching Contingency Plan effective depth.
3. Restrict the number of personnel at the drilling rig or well site to a minimum while drilling, starting well work, testing or coring.
4. Ensure weekly H₂S drills/training are performed, if possible.

B. Toolpusher

1. Ensure that necessary H₂S safety equipment is provided on the rig, and that it is properly inspected and maintained.
2. Ensure that all personnel that work in the well area, are thoroughly trained in the use of H₂S safety equipment and periodic drills are held to maintain an adequate level of proficiency.

C. In Scope Personnel

1. Remain clean-shaven. Beards and long sideburns do not allow a proper facepiece seal.
2. Receive H₂S safety training on location, or confirm prior training by certification that is one year within date.
3. Familiarize yourself with the rig's Contingency Plan.
4. Inspect and practice putting on your breathing apparatus.

5. Know the location of the “safe briefing areas”.
6. Keep yourself “wind conscious”. Be prepared to quickly move upwind and away in the event of any emergency involving release of H₂S.

D. Total Safety H₂S Safety Technician or MRC Designee

1. Conduct training as necessary to ensure all personnel working in well area are familiar with the contingency procedures and the operation of emergency equipment.
2. Check all H₂S safety equipment to ensure that it is ready for emergency use:
 - Check pressure weekly for each shift on breathing apparatus (both 30-minute and hip-packs) to make sure they are charged to full volume.
 - Check pressure on cascade air bottles, if on location, to see that they are capable of recharging breathing apparatus.
 - Check oxygen resuscitator, if on location, to ensure that it is charged to full volume.
 - Check H₂S detectors weekly for each shift (fixed and portable), and explosimeter, to ensure they are working properly.
3. Provide a weekly report to MRC Energy Co.'s well-site representative documenting:
 - Calibrations performed on H₂S detectors.
 - Proper location and working order of H₂S safety equipment.
 - Attendance of all personnel, trained or retrained, and their company.
 - Weekly drills, if held and a list of personnel participating and summary of actions.

OUT OF SCOPE PERSONNEL

MRC Energy Co. policy will not require Out of Scope Personnel to be clean shaven, have processed medical questionnaires, fit testing, or have certified H2S Training.

SAFETY EQUIPMENT

All respirators will be designed, selected, used and maintained in conformance with ANSI Z88.2, American National Standard for respiratory protection.

Personal protective equipment must be provided and used. Those who are expected to use respiratory equipment in case of an emergency will be carefully instructed in the proper use and told why the equipment is being used. Careful attention will be given to the minute details in order to avoid possible misuse of the equipment during periods of extreme stress.

Self-contained breathing apparatus provides complete respiratory and eye protection in any concentration of toxic gases and under any condition of oxygen deficiency. The wearer is independent of the surrounding atmosphere because he/she is breathing with a system admitting no outside air. It consists of a full face mask, breathing tube, pressure demand regulator, air supply cylinder, and harness. Pure breathing air from the supply cylinder flows to the mask automatically through the pressure demand regulator which reduces the pressure to a breathing level. Upon inhalation, air flows into the mask at a rate precisely regulated to the user's demand. Upon exhalation, the flow to the mask stops and the exhaled breath passes through a valve in the face piece to the surrounding atmosphere. The apparatus includes an alarm & gauge which warns the wearer to leave the contaminated area for a new cylinder of air or cylinder refill.

The derrickman is provided with a full face piece unit attached to a 5– minute escape cylinder. He will also have his own self-contained 30-minute unit breathing apparatus located on the drilling floor. He will use the 5-minute unit to exit the derrick to the floor, donning the 30-minute unit located on the floor, if needed.

All respiratory protective equipment, when not in use, should be stored in a clean, cool, dry place, and out of direct sunlight to retard the deterioration of rubber parts. After each use, the mask assembly will be scrubbed with soap and water, rinsed thoroughly, and dried. Air cylinders can be recharged to a full condition from a cascade system.

Personnel in each crew will be trained in the proper techniques of bottle filling.

The primary piece of equipment to be utilized, should anyone be overcome by hydrogen sulfide, is the oxygen resuscitator, if on location.

When asphyxiation occurs, the victim must be moved to fresh air and immediately given artificial respiration. In order to assure readiness, the bottles of oxygen will be checked at regular intervals and an extra tank kept on hand.

Hand-operated pump-type detectors incorporating detector tubes will give more accurate readings of hydrogen sulfide. The pump-type draws air to be tested through the detector tube containing lead acetate-silica gel granules. Presence of hydrogen sulfide in the air sample is shown by the development of a dark brown stain on the granules, which is the

scale reading of the concentration of hydrogen sulfide. By changing the type of detector tube used, this detector may also be used for sulfur dioxide (SO₂) detection when hydrogen sulfide (H₂S) is being burned in the flare area.

Provisions must be made for the storage of all safety equipment as is evident from the foregoing discussion. All equipment must be stored in an available location so that anyone engaged in normal work situations is no more than “one breath away” from a mask.

V – TOXICITY OF VARIOUS GASES

Lethal Common Name ppm⁴	Chemical Formula	Specific Gravity¹	PEL (OSHA)²	STEL³
Hydrogen Cyanide 300	HCN	0.94	10	150
Hydrogen Sulfide 600	H ₂ S	1.18	20	Peak- 50ppm
Note: The ACGIH(7) recommends a TWA(6) value of 10ppm as the TLV(5) for H ₂ S and an STEL of 15ppm.				
Sulfur Dioxide 1000	SO ₂	2.21	2	5 ppm
Chlorine	CL ₂	2.45	1	
Carbon Monoxide 1000	CO	0.97	35	200/1 Hour
Carbon Dioxide 10%	CO ₂	1.52	5000	5%
Methane	CH ₄	0.55	90000	

¹ **Air = 1.0**

² **Permissible** - Concentration at which is believed that all workers may repeatedly be exposed, day after day, without adverse effect.

³ **STEL** - Short Term Exposure Limit. A 15-minute time weighted average.

⁴ **Lethal** - Concentration that will cause death with short-term exposure.

TLV – Threshold Limit Value; a concentration recommended by the American Conference of Governmental Industrial Hygienists (ACGIH)

TWA – Time Weighted Average; the average concentration of contaminant one can be exposed to over a given eight-hour period.

ACGIH – (American Conference of Governmental Industrial Hygienists) is an organization comprised of Occupational Health Professionals believed by many to be the top experts in the field of Industrial Hygiene. They are recognized as an expert resource by OSHA. The ACGIH releases a bi-annual publication “Threshold Limit Values and Biological Indices” that many safety professionals consider to be the authoritative document on airborne contaminants.

Reference: API RP-49, September 1974 - Reissued August 1978

VI. PROPERTIES OF GASES

A. CARBON DIOXIDE

1. Carbon Dioxide (CO₂) is usually considered inert and is commonly used to extinguish fires. It is 1.52 times heavier than air and will concentrate in low areas of still air. Humans cannot breathe air containing more than 10% CO₂ without losing conscience or becoming disorientation in a few minutes. Continued exposure to CO₂ after being affected will cause convulsions, coma, and respiratory failure.

2. The threshold limit of CO₂ is 5000 ppm. Short-term exposure to 50,000 ppm (5%) is reasonable. This gas is colorless, odorless, and can be tolerated in relatively high concentrations.

B. HYDROGEN SULFIDE

1. Hydrogen Sulfide (H₂S) is a colorless, transparent, flammable gas. It is heavier than air and, hence, may accumulate in low places.

2. Although the slightest presence of H₂S in the air is normally detectable by its characteristic "rotten egg" odor, it is dangerous to rely on the odor as a means of detecting excessive concentrations because the sense of smell is rapidly lost, allowing lethal concentrations to be accumulated without warning. The following table indicates the poisonous nature of H₂S.

CONCENTRATION			EFFECTS
% H ₂ S	PPM	GR/100 SCF ¹	
0.001	10	.65	Safe for 8 hours without respirator. Obvious and unpleasant odor.
0.0015	15	0.975	Safe for 15 minutes of exposure without respirator.
0.01	100	6.48	Kills smell in 3-15 minutes; may sting eyes and throat.
0.02	200	12.96	Kills smell quickly; stings eyes and throat.
0.05	500	32.96	Dizziness; breathing ceases in a few minutes; need prompt artificial respiration.
0.07	700	45.92	Rapid Unconsciousness; death will result if not rescued promptly.
0.1	1000	64.80	Instant unconsciousness, followed by death within minutes.

¹ Grains per 100 Cubic Feet

VII. Treatment Procedures for Hydrogen Sulfide Poisoning

- A. Remove the victim to fresh air.
- B. If breathing has ceased or is labored, begin resuscitation immediately.
Note: This is the quickest and preferred method of clearing victim's lungs of contaminated air; however, under disaster conditions, it may not be practical to move the victim to fresh air. In such instances, where those rendering first aid must continue to wear masks, a resuscitator should be used.
- C. Apply resuscitator to help purge H₂S from the blood stream.
- D. Keep the victim at rest and prevent chilling.
- E. Get victim under physician's care as soon as possible.

C. SULPHUR DIOXIDE

1. Sulfur Dioxide (SO₂) is a colorless, non-flammable, transparent gas.
2. SO₂ is produced during the burning of H₂S. Although SO₂ is heavier than air, it can be picked up by a breeze and carried downwind at elevated temperatures. Since SO₂ is extremely irritating to the eyes and mucous membranes of the upper respiratory tract, it has exceptionally good warning powers in this respect. The following table indicates the toxic nature of SO₂:

CONCENTRATION		EFFECTS
% SO ₂	PPM	
0.0005	3 to 5	Pungent odor, normally a person can detect SO ₂ in this range.
0.0012	12	Throat irritation, coughing, constriction of the chest, tearing and smarting of eyes.
0.015	150	So irritating that it can only be endured for a few minutes.
.05	500	Causes a sense of suffocation, event with the first breath.

VIII. BREATHING AIR EQUIPMENT DRILLS FOR ON & OFF DUTY PERSONNEL

An H₂S Drill and Training Session must be given once a week to ALL on-duty personnel with off duty personnel. On-duty and Off-duty personnel will reverse roles on alternate drills.

An H₂S drill and training session must be given once a week to all off-duty personnel in coincidence with on-duty personnel reversing roles on alternate drills.

The purpose of this drill is to instruct the crews in the operation and use of breathing air and H₂S related emergency equipment and to allow the personnel to become acquainted with using the equipment under working conditions. The crews should be trained to put on the breathing air equipment within one minute when required or requested to do so.

The following procedure should be used for weekly drills. The MRC supervisor must be satisfied that the crews are proficient with the equipment.

1. All personnel should be informed that a drill will be held.
2. The Total H₂S Safety Technician or a designee assigned by the MRC Drilling Foreman should initiate the drill by signaling as he/she would if H₂S was detected.
3. Personnel should don their breathing apparatus.
4. Once the breathing air equipment is on, the H₂S Technician should check all personnel to insure proper operation.

A training and information session will be conducted after each drill to answer any H₂S related questions and to cover any gaps identified from one of the following topics:

- Condition II, and III alerts and steps to be taken by all personnel.
- The importance of wind direction when dealing with H₂S.
- Proper use and storage of all types of breathing equipment.
- Proper use and storage of oxygen resuscitators.
- Proper use and storage of H₂S detectors (Mini Checks or equivalent).
- The "buddy system" and the procedure for rescuing a person overcome by H₂S.
- Responsibilities and duties.
- Location of H₂S safety equipment.
- Other parts of the "H₂S Contingency Plan" that should be reviewed.

NOTE: A record of attendance must be kept for weekly drills and training sessions.

IX. HYDROGEN SULFIDE TRAINING CURRICULUM

(FOR EMPLOYERS, VISITORS, AND CONTRACTORS)

EACH PERSON WILL BE INFORMED ON THE RESTRICTIONS OF HAVING BEARDS AND CONTACT LENS. THEY WILL ALSO BE INFORMED OF THE AVAILABILITY OF SPECTACLE KITS.

AFTER THE H₂S EQUIPMENT IS RIGGED UP, ALL IN SCOPE PERSONNEL WILL BE H₂S TRAINED AND PUT THROUGH A DRILL. ANY DEFICIENCIES WILL BE CORRECTED.

Training Completion cards are good for one year and will indicate date of completion or expiration. Personnel previously trained on another facility and visiting, must attend a "supplemental briefing" on H₂S equipment and procedures before beginning duty. Visitors who remain on the location more than 24 hours must receive full H₂S training given all crew members. A "supplemental briefing" will include but not be limited to: Location of respirators, familiarization with safe briefing areas, alarms with instruction on responsibilities in the event of a release and hazards of H₂S and (SO₂, if applicable). A training and drill log will be kept.

Topics for full H₂S training shall include the following equipment if on location, but not be limited to the following:

1. **Brief Introduction on H₂S**
 - A. Slide or Computer presentation (If Available)
 - B. H₂S material will be distributed
 - C. Re-emphasize the properties, toxicity, and hazards of H₂S
 - D. Source of SO₂ (if applicable)
2. **H₂S Detection**
 - A. Description of H₂S sensors
 - B. Description of warning system (how it works & it's location)
 - C. Actual location of H₂S sensors
 - D. Instruction on use of pump type detector (Gastec)
 - E. Use of card detectors, ampoules, or dosimeters
 - F. Use of combustible gas detector
 - G. Other personnel detectors used
 - H. Alarm conditions I & II,
 - I. SO₂ alarms (if applicable)

3. **H2S Protection**
 - A. Types of breathing apparatus provided (30-minute SCBA & 5-minute SCBA (with voice diaphragms for communication if supplied)
 - B. Principle of how breathing apparatus works
 - C. Demonstration on how to use breathing apparatus
 - D. Location of breathing apparatus
4. **Cascade System**
 - A. Description of cascade system
 - B. How system works
 - C. Cascade location of rig with reference to briefing areas
 - D. How to use cascade system (with 5-minute hose work line units & refill, if supplied)
 - E. Importance of wind direction and actual location of Windssocks
 - F. Purpose of compressor/function (if one is on site)
5. **H2S Rescue and First Aid**
 - A. Importance of wind direction
 - B. Safe briefing area
 - C. Buddy system
 - D. H2S symptoms
 - E. Methods of rescue
6. **Hands on Training**
 - A. Donning/familiarization of SCBA 30-minute unit
 - B. Donning/familiarization of SKADA 5- MIN. Packs
 - C. Familiarization of cascades
 - D. Use of O2 resuscitator
 - E. Alarm conditions - upwind briefing areas, etc...
 - F. Duties and responsibilities of all personnel
 - G. Procedures for evacuation
 - H. Search and Rescue teams
7. **Certification**
 - A. Testing on material covered

TOTAL SAFETY US INC., FIT TEST

X. EMPLOYEE INFORMATION

Employee Name: _____ Date: _____

Date of Employee Medical Evaluation: _____

Medical Status (circle): Unrestricted Limitations on Use Use Not
Authorized

RESPIRATOR INFORMATION

Respirator Type (Dustmask, SCBA, etc): _____

Brand: _____

Size: (circle): XS S M L XL

FIT TEST INFORMATION

Type of Fit Test Performed:

Quantitative

Porta Count
Fittester 3000

Fit Factor: _____

Fit Factor: _____

Qualitative

Irritant Smoke
Isoamyl Acetate (Banana Oil)
Saccharin
Bitrex

Passed / Failed

Passed / Failed

Passed / Failed

Passed / Failed

I hereby certify that this fittest was conducted in accordance with the OSHA Fit Testing Protocols found in Appendix A of 1910.134.

Fit Tester Name (Print): _____

Signature: _____ Date: _____

XI. H₂S SAFETY SERVICES

HYDROGEN SULFIDE SAFETY PACKAGE – Contained on location in Total Safety H₂S Equipment Trailer, unless otherwise noted:

RESPIRATORY SAFETY SYSTEMS

QTY DESCRIPTION

- 12 30-Minute Pressure Demand SCBA
(4-Primary Safe Briefing Area, 4-Secondary Safe Briefing Area, 4-floor with one of these for derrick man)
- 9 Hose Line 5-minute Work Unit w/Escapes Cylinder (1 in derrick, 6 on drill floor, 1 in mud pit wt area, 1 in shaker area)

The following shall be part of the package if requested by the MRC Foremen (at least one trailer with cascade system is required to be located in the MRC Magnolia asset for use as needed)

- 1 Breathing air cascade of 10 bottles w/regulator
- 2 Refill lines to refill 30-minute units on location
- 1 6-Man manifold that can be rigged up to work area on floor, if needed
- 6 25 foot hose lines
- 2 50 foot hose lines
- 100 Feet of hose line to rig cascade up to 12 man manifold on floor
- 12 30-minute Self Contained Breathing apparatus

DETECTION AND ALARM SAFETY SYSTEM

- 1 H₂S Fixed Monitor w/8Channels (Loc determined at rig up) suggested.
(Mud pit area, shaker area, bell nipple area, floor/driller area, & outside quarters)
- 5 H₂S Sensors
- 3 Explosion Proof Alarms (Light and Siren)
(1 on floor, 1 in work area, 1 in trailer area where quarters are located)
- 2 Personal H₂S monitors
- 1 Portable Tri-Gas Hand Held Meter (O₂, LEL, H₂S)
- 1 Sensidyne/Gastech Manual Pump Type Detector
- 8 Boxes H₂S Tubes Various Ranges
- 2 Boxes SO₂ Tubes Various Ranges
- 1 Calibration Gas
- 1 Set Paper Work for Records: Training, Cal, Inspection, other

ADDITIONAL SAFETY RELATED EQUIPMENT

QTY DESCRIPTION

2	Windssocks with Pole and Bracket
1	Set Well Condition Sign w/Green, Yellow, Red Flags
1	Primary Safe Briefing Area Sign
1	Secondary Safe Briefing Area Sign
6	Operating Condition Signs for Work Areas & Living Quarters

**TRAILER WITH BREATHING AIR CASCADE WILL
ALSO INCLUDE THE FOLLOWING:**

This equipment will be part of the H2S equipment stored in the trailer, when on location

1	First aid kit
1	Fire Blanket
1	Eye wash station
2	Safety Harness w/150' safety line

XII. EMERGENCY PHONE NUMBERS (Updated March 18, 2009)

EMERGENCY PHONE NUMBERS

MRC Energy Co. Emergency Phone #

MRC Energy Co. Permian Operations Phone-----

MRC Energy Co. Production

113 Daw Rd

Mansfield LA 71052

Title	Names	Phone	Cell
Operations Manager			
Operation Supt.			
Operations Supervisor			
Operations Supervisor			
Office Supervisor			
HSE			
Scheduler Planner			

Hydrogen Sulfide Safety Consultants

Total Safety W. Bender Blvd. Hobbs, NM	575-392-2973	After Hours 24 Hour Call Center Through Office Number
Tommy Throckmorton Operations Manager	575-392-2973	940-268-9614
Rodney Jourdan Sales Contact	575-392-2973	432-349-3928

MRC Energy Co. MEDICAL RESPONSE PLAN AND IT'S MEDICAL PROTOCOLS WILL BE FOLLOWED

MEDICAL COORDINATOR # -----

[Emergency Numbers & Directions](#)

Hospitals (911)

Artesia General Hospital 702 N. 13th St. Artesia, NM 88210	Main Phone Number	575-748-3333
Nor-Lea General Hospital 1600 N. Main Ave. Lovington, NM 88260	Main Phone Number	575-396-6611
Lea Regional Medical Center 5419 N. Lovington Hwy Hobbs, NM 88240	Main Phone Number	575-492-5260
Carlsbad General Hospital 2430 W. Pierce St. Carlsbad, NM	Main Phone Number	575-887-4100
Lovelace Regional Hospital 117 E. 19th St Roswell, NM 88201	Main Phone Number	575-627-7000
Winkler Co. Memorial Hospital 821 Jeffee Dr. Kermit, Texas 79745	Main Phone Number	432-586-8299
Reeves County Hospital 2323 Texas St. Pecos, Texas 79772	Main Phone Number	432-447-3551

State Police (911)

Texas DPS Loving co. 225 N.Pecos Mentone, Texas 79754	Office Number	432-377-2411
Texas DPS Winkler Co. 100 E Winkler Kermit, Texas 79745	Office Number	432-586-3465
Texas DPS Pecos Co. 148 N I-20 Frontage RD Pecos, Texas 79772	Office Number	432-447-3532
New Mexico State Police 3300 W. Main St Artesia, NM	Office Number	575-748-9718
New Mexico State Police 304 N. Canyon St Carlsbad, NM 88220	Office Number	575-885-3137
New Mexico State Police 5100 Jack Gomez Blvd. Hobbs, NM 88240	Office Number	575-392-5588

Local Law Enforcement (911) (Sheriff)

Reeves Co. Sheriff 500 N. Oak ST Pecos, Texas 79722	Office Number	432-445-4901
Winkler Co. Sheriff 1300 Bellaire St. Kermit, Texas 79745	Office Number	432-586-3461
Loving Co. Sheriff Courthouse Mentone, Texas	Office Number	432-377-2411
Lea Co. Sheriff 1417 S. Commercial St. Lovington, NM 88260	Office Number	
Eddy Co. Sheriff 305 N 7th St. Artesia, NM 88210	Office Number	575-766-9888
Eddy Co. Sheriff 305 N 7th St. Carlsbad, NM 88220	Office Number	575-746-9888

Federal & State Agencies

OSHA Lubbock Area Office 1205 Texas Av. Room 806 Lubbock, Texas 79401	Main Number	806-472-7681 EXT 7685
New Mexico Environment Department 400 N Pennsylvania Roswell, NM 88201	Joe Fresquez	575-623-3935
Texas Railroad Commission Midland, Texas	Main Number	844-773-0305
BLM Carlsbad, NM Field Office 620 E. Green ST Carlsbad, NM 88220	Main Number	575-234-5972
BLM Hobbs Field Station 414 W. Taylor Rd. Hobbs, NM 88240	Main Number	575-393-3612
BLM Roswell District Office 2909 W. Second St. Roswell, NM 88201	Main Number	575-627-0272
TECQ Texas Commission on Environmental Quality	Main Number	800-832-8224
New Mexico OCD		
U.S. Environmental Protection Agency Region 6 Texas/New Mexico	Main Number	214-655-2222
National Response Center Toxic Chemicals & Oil Spills	Main Number	800-424-8802

Rig Company

XIII. EVACUATION OF THE GENERAL PUBLIC

The procedure to be used in alerting nearby persons in the event of any occurrence that could pose a threat to life or property will be arranged and completed with public officials in detail, prior to drilling into the hydrogen sulfide formations.

In the event of an actual emergency, the following steps will be immediately taken:

1. The MRC Energy Co.'s representative will dispatch sufficient personnel to immediately warn each resident and transients down-wind within radius of exposure from the well site. Then warn all residence in the radius of exposure. Additional evacuation zones may be necessary as the situation warrants.
2. The MRC Energy Co.'s representative will immediately notify proper authorities, including the Sheriff's Office, Highway Patrol, and any other public officials as described above and will enlist their assistance in warning residents and transients in the calculated radius of exposure.
3. The MRC Energy Co.'s representative will dispatch sufficient personnel to divert traffic in the vicinity away from the potentially dangerous area. A guard to the entrance of the well site will be posted to monitor essential and non essential traffic.
4. General:
 - A. The area included within the radius of exposure is considered to be the zone of maximum potential hazard from a hydrogen sulfide gas escape. Immediate evacuation of public areas, in accordance with the provisions of this contingency plan, is imperative. When it is determined that conditions exist which create an additional area (beyond the initial zone of maximum potential hazard) vulnerable to possible hazard, public areas in the additional hazardous area will be evacuated in accordance with the contingency plan.
 - B. In the event of a disaster, after the public areas have been evacuated and traffic stopped, it is expected that local civil authorities will have arrived and within a few hours will have assumed direction of and control of the public, including all public areas. MRC Energy Co. will cooperate with these authorities to the fullest extent and will exert every effort by careful advice to such authorities to prevent panic or rumors.
 - C. MRC Energy Co. will dispatch appropriate management personnel at the disaster site as soon as possible. The company's personnel

will cooperate with and provide such information to civil authorities as they might require.

- D. One of the products of the combustion of hydrogen sulfide is sulfur dioxide (SO₂). Under certain conditions this gas may be equally as dangerous as H₂S. A pump type detector device, which determines the percent of SO₂ in air through concentrations in ppm, will be available. Although normal air movement is sufficient to dissipate this material to safe levels, the SO₂ detector should be utilized to check concentrations in the proximity of the well once every hour, or as necessary and the situation warrants. Also, if any low areas are suspected of having high concentrations, personnel should be made aware of these areas, and steps should be taken to determine whether or not these low areas are hazardous.

Exhibit E-6: H2S Contingency Plan Emergency Contacts
Matador Resources Company

Company Office			
Matador Resources Company		(972)-371-5200	
Key Personnel			
Name	Title	Office	Mobile
Billy Goodwin	Vice President Drilling	972-371-5210	817-522-2928
Gary Martin	Drilling Superintendent		601-669-1774
Dee Smith	Drilling Superintendent	972-371-5447	972-822-1010
Blake Hermes	Drilling Engineer	972-371-5485	713-876-8558
	Construction Superintendent		
	Construction Superintendent		
Artesia			
Ambulance		911	
State Police		575-746-2703	
City Police		575-746-2703	
Sheriff's Office		575-746-9888	
Fire Department		575-746-2701	
Local Emergency Planning Committee		575-746-2122	
New Mexico Oil Conservation Division		575-748-1283	
Carlsbad			
Ambulance		911	
State Police		575-885-3137	
City Police		575-885-2111	
Sheriff's Office		575-887-7551	
Fire Department		575-887-3798	
Local Emergency Planning Committee		575-887-6544	
New Mexico Oil Conservation Division		575-887-6544	
Santa Fe			
New Mexico Emergency Response Comission (Santa Fe)		505-476-9600	
New Mexico Emergency Response Comission (Santa Fe) 24 hrs		505-827-9126	
New Mexico State Emergency Operations Center		505-476-9635	
National			
National Emegency Response Center (Washington, D.C.)		800-424-8802	
Medical			
Flight for Life- 4000 24th St.; Lubbock, TX		806-743-9911	
Aerocare- R3, Box 49F; Lubbock, TX		806-747-8923	
Med Flight Air Amb- 2301 Yale Blvd S.E., D3; Albuquerque, NM		505-842-4433	
SB Air Med Service- 2505 Clark Carr Loop S.E.; Albuquerque, NM		505-842-4949	
Other			
Boots & Coots IWC		800-256-9688	or 281-931-8884
Cudd Pressure Control		432-699-0139	or 432-563-3356
Haliburton		575-746-2757	
B.J. Services		575-746-3569	

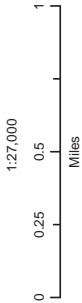
Matador Production
Company

Rodney Robinson Slot 2
H₂S Contingency Plan:
2 Mile Radius Map

Section 6, Township 23S, Range 33E
Lea County, New Mexico



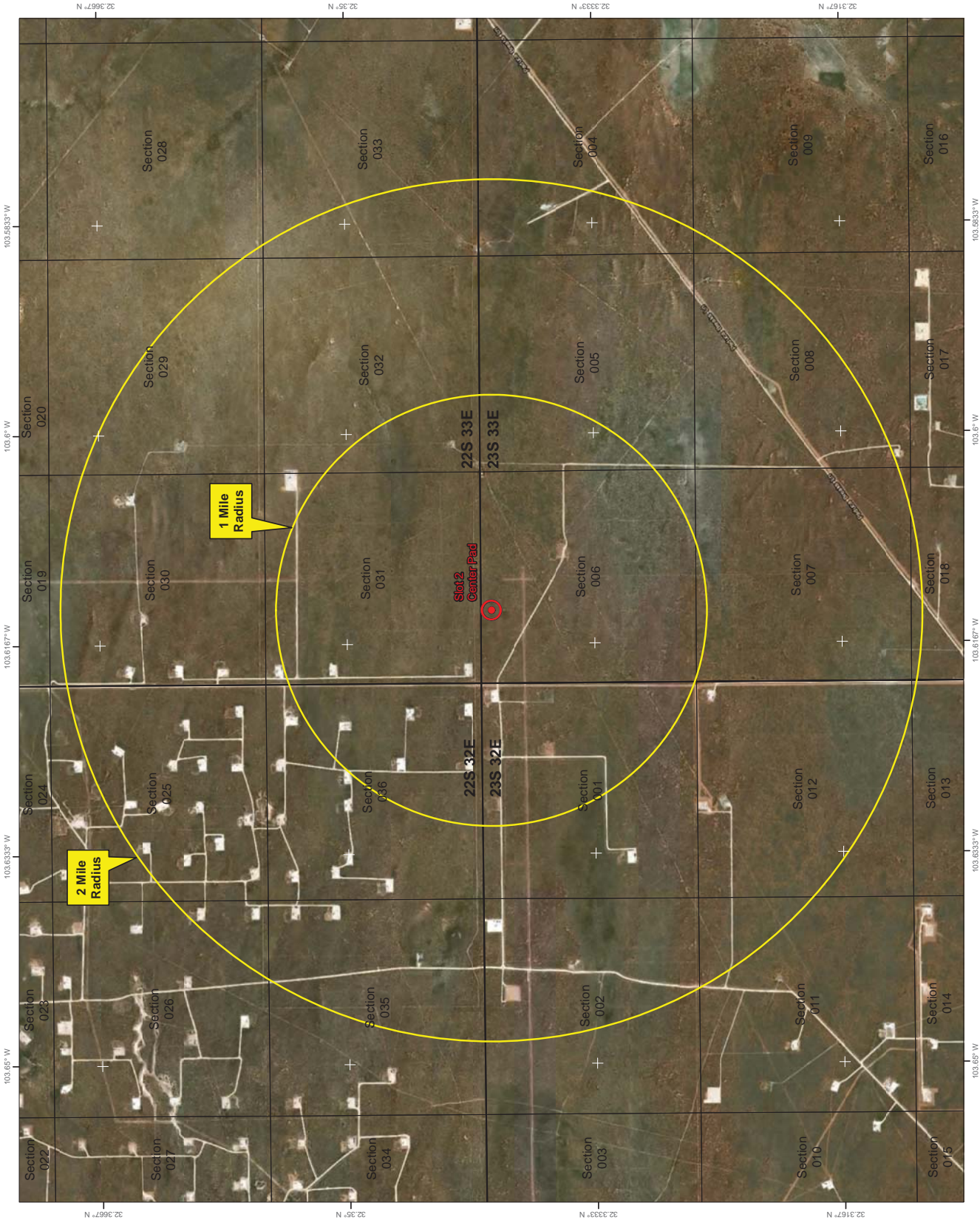
Pad Center



NAD 1983 New Mexico State Plane East
FIPS 3001 Feet



Prepared by Permits West, Inc., March 22, 2019
for Matador Production Company



Rig Diagram

Rig Diagram
Rodney Robinson Federal
Slots 1 & 2 Well Pad
Matador Resources Company
6-23S-33E
Lea County, NM

Wind Direction
Indicator

H2S Monitors

Briefing Areas

Condition Warning Sign

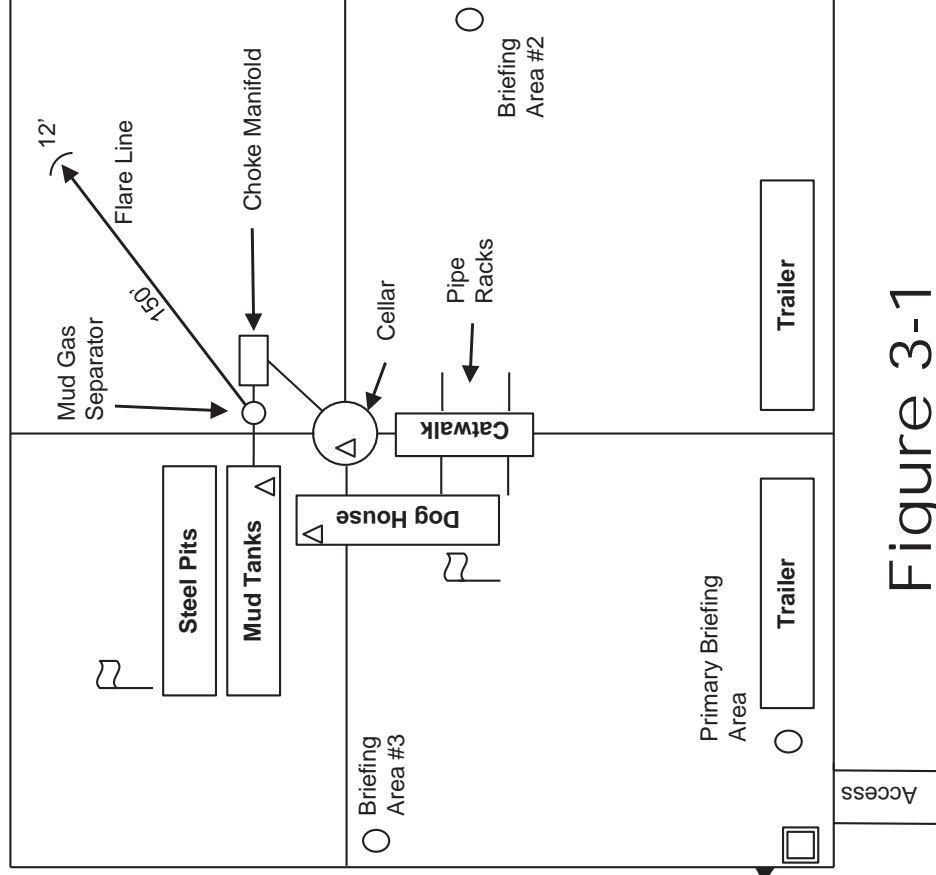


Figure 3-1



SURVEY PROGRAM

WELL DETAILS: Rodney Robinson Fed Com #103H

Depth From	Depth To	Survey/Plan	Tool	+N/-S	+E/-W	Northing	GL @ 3718.0	KB @ 3746.5	Latitude	Longitude	Slot
0.0	19716.4	BLM Plan #1 (Wellbore #1)	MWD	72.2	95.8	478383.49	Easting 724168.52	32° 18' 47.184 N	103° 36' 27.823 W		

Company: Matador Production Company
Well: Rodney Robinson Fed Com #103H
County: Lea county, New Mexico
Wellbore: Wellbore #1
Plan: BLM Plan #1
Date:

Geodetic System: Flat Earth
Datum: WGS 1984
Ellipsoid: WGS 1984
Zone: No Conversions
System Datum: Mean Sea Level

To convert a Magnetic Direction to a Grid Direction, Subtract 0.00°
To convert a Magnetic Direction to a True Direction, Add 0.00° East
To convert a True Direction to a Grid Direction, Subtract 0.00°

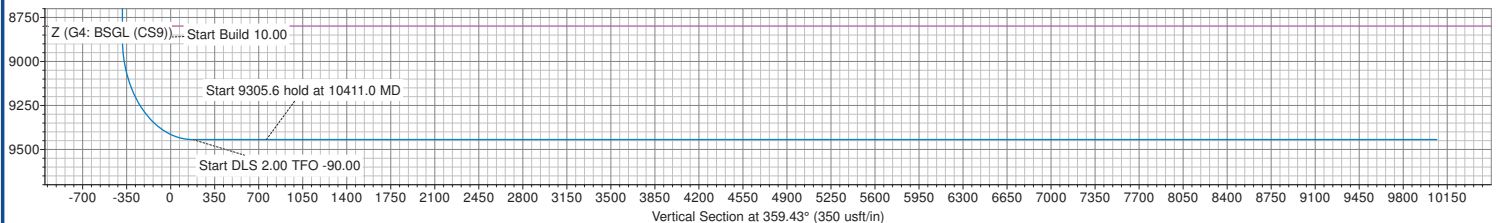
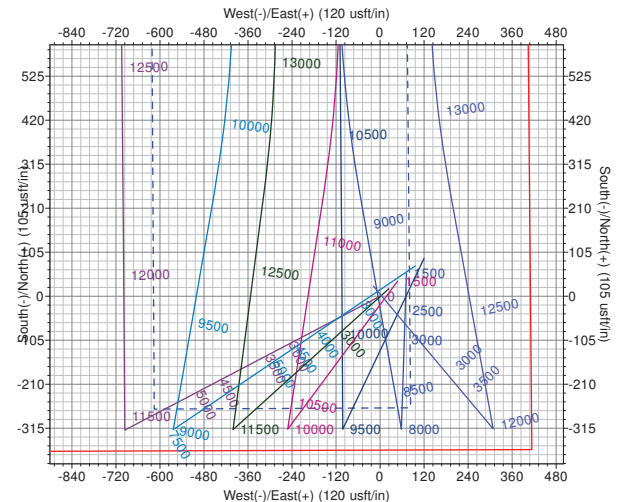
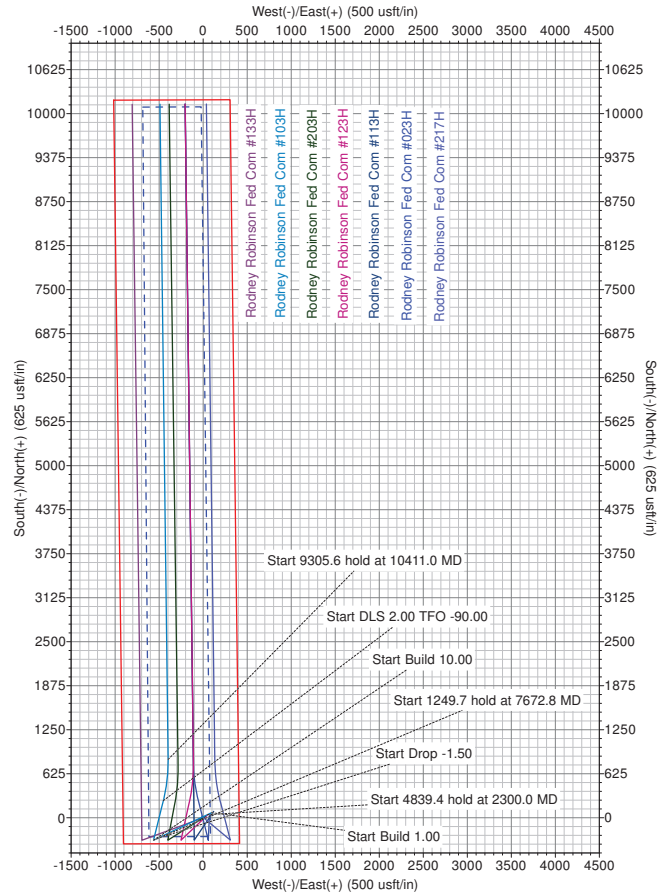
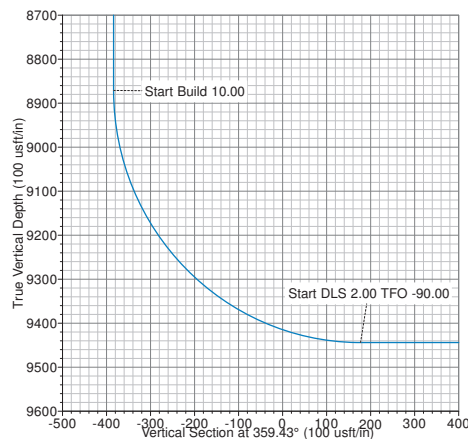
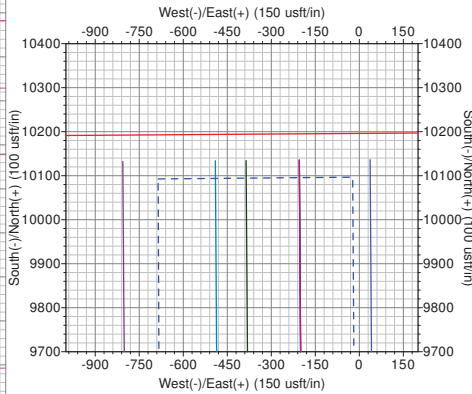
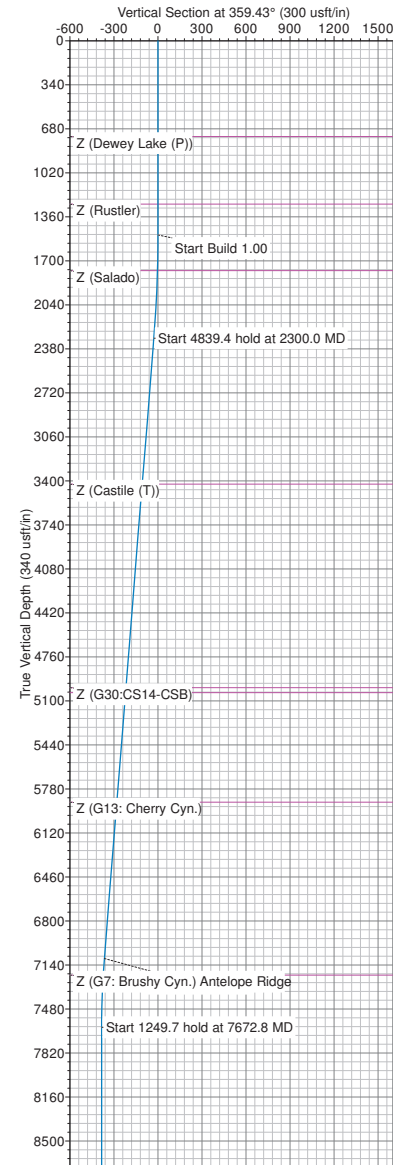
G/T/M
Azimuths to Grid North
True North: 0.00°
Magnetic North: 0.00°
Magnetic Field
Strength: 0.0snT
Dip Angle: 0.00°
Date: 12/31/2009
Model: USER DEFINED

DESIGN TARGET DETAILS

Name	TVD	+N/-S	+E/-W	Northing	Easting	Latitude	Longitude
VP - Rodney Robinson Fed Com #103H	8871.0	-318.3	-563.7	477993.00	723509.00	32° 18' 43.364 N	103° 36' 35.538 W
BHL - Rodney Robinson Fed Com #103H	9444.0	10133.8	-490.7	488445.12	723582.04	32° 20' 26.787 N	103° 36' 33.864 W

SECTION DETAILS

MD	Inc	Azi	TVD	+N/-S	+E/-W	Dleg	TFace	Vsect	Annotation
0.0	0.00	0.00	0.0	72.2	95.8	0.00	0.00	0.0	
1500.0	0.00	0.00	1500.0	72.2	95.8	0.00	0.00	0.0	Start Build 1.00
2300.0	8.00	239.37	2297.4	43.8	47.8	1.00	239.37	-27.9	Start 4839.4 hold at 2300.0 MD
7139.4	8.00	239.37	7089.7	-299.4	-531.7	0.00	0.00	-365.3	Start Drop -1.50
7672.8	0.00	0.00	7621.3	-318.3	-563.7	1.50	180.00	-383.9	Start 1249.7 hold at 7672.8 MD
8922.4	0.00	0.00	8871.0	-318.3	-563.7	0.00	0.00	-383.9	Start Build 10.00
9822.4	90.00	11.20	9444.0	243.7	-452.4	10.00	11.20	177.0	Start DLS 2.00 TFO -90.00
10411.0	90.00	359.43	9444.0	828.7	-398.0	2.00	-90.00	761.4	Start 9305.6 hold at 10411.0 MD
19716.5	90.00	359.43	9444.0	10133.8	-490.7	0.00	0.00	10067.0	TD at 19716.5



Matador Production Company

Antelope Ridge

Rodney Robinson

Rodney Robinson Fed Com #103H

Wellbore #1

Plan: BLM Plan #1

Standard Planning Report

01 June, 2019

Planning Report

Database:	EDM 5000.14 Server	Local Co-ordinate Reference:	Site Rodney Robinson
Company:	Matador Production Company	TVD Reference:	KB @ 3746.5usft
Project:	Antelope Ridge	MD Reference:	KB @ 3746.5usft
Site:	Rodney Robinson	North Reference:	Grid
Well:	Rodney Robinson Fed Com #103H	Survey Calculation Method:	Minimum Curvature
Wellbore:	Wellbore #1		
Design:	BLM Plan #1		

Project	Antelope Ridge		
Map System:	Flat Earth	System Datum:	Mean Sea Level
Geo Datum:	WGS 1984		
Map Zone:	No Conversions		

Site		Rodney Robinson			
Site Position:		Northing:	478,311.32 usft	Latitude:	32° 18' 46.476 N
From:	Lat/Long	Easting:	724,072.70 usft	Longitude:	103° 36' 28.945 W
Position Uncertainty:	0.0 usft	Slot Radius:	13-3/16 "	Grid Convergence:	0.00 °

Well	Rodney Robinson Fed Com #103H					
Well Position	+N/-S	72.2 usft	Northing:	478,383.49 usft	Latitude:	32° 18' 47.184 N
	+E/-W	95.8 usft	Easting:	724,168.52 usft	Longitude:	103° 36' 27.823 W
Position Uncertainty		0.0 usft	Wellhead Elevation:		Ground Level:	3,718.0 usft

Wellbore	Wellbore #1				
Magnetics	Model Name	Sample Date	Declination (°)	Dip Angle (°)	Field Strength (nT)
	User Defined	12/31/2009	0.00	0.00	0.00000000

Design	BLM Plan #1			
Audit Notes:				
Version:	1	Phase:	PLAN	Tie On Depth: 0.0
Vertical Section:	Depth From (TVD) (usft)	+N/-S (usft)	+E/-W (usft)	Direction (°)
	0.0	72.2	95.8	359.43

Plan Survey Tool Program	Date	6/1/2019			
Depth From (usft)	Depth To (usft)	Survey (Wellbore)	Tool Name	Remarks	
1	0.0	19,716.4	BLM Plan #1 (Wellbore #1)	MWD	
				OWSG MWD - Standard	

Plan Sections										
Measured Depth (usft)	Inclination (°)	Azimuth (°)	Vertical Depth (usft)	+N/-S (usft)	+E/-W (usft)	Dogleg Rate (°/100usft)	Build Rate (°/100usft)	Turn Rate (°/100usft)	TFO (°)	Target
0.0	0.00	0.00	0.0	72.2	95.8	0.00	0.00	0.00	0.00	
1,500.0	0.00	0.00	1,500.0	72.2	95.8	0.00	0.00	0.00	0.00	
2,300.0	8.00	239.37	2,297.4	43.8	47.8	1.00	1.00	0.00	239.37	
7,139.4	8.00	239.37	7,089.7	-299.4	-531.7	0.00	0.00	0.00	0.00	
7,672.8	0.00	0.00	7,621.3	-318.3	-563.7	1.50	-1.50	0.00	180.00	
8,922.4	0.00	0.00	8,871.0	-318.3	-563.7	0.00	0.00	0.00	0.00	VP - Rodney Robinso
9,822.4	90.00	11.20	9,444.0	243.7	-452.4	10.00	10.00	0.00	11.20	
10,411.0	90.00	359.43	9,444.0	828.7	-398.0	2.00	0.00	-2.00	-90.00	
19,716.5	90.00	359.43	9,444.0	10,133.8	-490.7	0.00	0.00	0.00	0.00	BHL - Rodney Robins

Planning Report

Database:	EDM 5000.14 Server	Local Co-ordinate Reference:	Site Rodney Robinson
Company:	Matador Production Company	TVD Reference:	KB @ 3746.5usft
Project:	Antelope Ridge	MD Reference:	KB @ 3746.5usft
Site:	Rodney Robinson	North Reference:	Grid
Well:	Rodney Robinson Fed Com #103H	Survey Calculation Method:	Minimum Curvature
Wellbore:	Wellbore #1		
Design:	BLM Plan #1		

Planned Survey									
Measured Depth (usft)	Inclination (°)	Azimuth (°)	Vertical Depth (usft)	+N/-S (usft)	+E/-W (usft)	Vertical Section (usft)	Dogleg Rate (°/100usft)	Build Rate (°/100usft)	Turn Rate (°/100usft)
0.0	0.00	0.00	0.0	72.2	95.8	0.0	0.00	0.00	0.00
100.0	0.00	0.00	100.0	72.2	95.8	0.0	0.00	0.00	0.00
200.0	0.00	0.00	200.0	72.2	95.8	0.0	0.00	0.00	0.00
300.0	0.00	0.00	300.0	72.2	95.8	0.0	0.00	0.00	0.00
400.0	0.00	0.00	400.0	72.2	95.8	0.0	0.00	0.00	0.00
500.0	0.00	0.00	500.0	72.2	95.8	0.0	0.00	0.00	0.00
600.0	0.00	0.00	600.0	72.2	95.8	0.0	0.00	0.00	0.00
700.0	0.00	0.00	700.0	72.2	95.8	0.0	0.00	0.00	0.00
739.3	0.00	0.00	739.3	72.2	95.8	0.0	0.00	0.00	0.00
Z (Dewey Lake (P))									
800.0	0.00	0.00	800.0	72.2	95.8	0.0	0.00	0.00	0.00
900.0	0.00	0.00	900.0	72.2	95.8	0.0	0.00	0.00	0.00
1,000.0	0.00	0.00	1,000.0	72.2	95.8	0.0	0.00	0.00	0.00
1,100.0	0.00	0.00	1,100.0	72.2	95.8	0.0	0.00	0.00	0.00
1,200.0	0.00	0.00	1,200.0	72.2	95.8	0.0	0.00	0.00	0.00
1,261.6	0.00	0.00	1,261.6	72.2	95.8	0.0	0.00	0.00	0.00
Z (Rustler)									
1,300.0	0.00	0.00	1,300.0	72.2	95.8	0.0	0.00	0.00	0.00
1,400.0	0.00	0.00	1,400.0	72.2	95.8	0.0	0.00	0.00	0.00
1,500.0	0.00	0.00	1,500.0	72.2	95.8	0.0	0.00	0.00	0.00
Start Build 1.00									
1,600.0	1.00	239.37	1,600.0	71.7	95.1	-0.4	1.00	1.00	0.00
1,700.0	2.00	239.37	1,700.0	70.4	92.8	-1.7	1.00	1.00	0.00
1,775.3	2.75	239.37	1,775.2	68.8	90.1	-3.3	1.00	1.00	0.00
Z (Salado)									
1,800.0	3.00	239.37	1,799.9	68.2	89.1	-3.9	1.00	1.00	0.00
1,900.0	4.00	239.37	1,899.7	65.1	83.8	-7.0	1.00	1.00	0.00
2,000.0	5.00	239.37	1,999.4	61.1	77.1	-10.9	1.00	1.00	0.00
2,100.0	6.00	239.37	2,098.9	56.2	68.8	-15.7	1.00	1.00	0.00
2,200.0	7.00	239.37	2,198.3	50.4	59.1	-21.4	1.00	1.00	0.00
2,300.0	8.00	239.37	2,297.4	43.8	47.8	-27.9	1.00	1.00	0.00
Start 4839.4 hold at 2300.0 MD									
2,400.0	8.00	239.37	2,396.4	36.7	35.9	-34.9	0.00	0.00	0.00
2,500.0	8.00	239.37	2,495.5	29.6	23.9	-41.9	0.00	0.00	0.00
2,600.0	8.00	239.37	2,594.5	22.5	11.9	-48.8	0.00	0.00	0.00
2,700.0	8.00	239.37	2,693.5	15.4	-0.1	-55.8	0.00	0.00	0.00
2,800.0	8.00	239.37	2,792.5	8.3	-12.0	-62.8	0.00	0.00	0.00
2,900.0	8.00	239.37	2,891.6	1.2	-24.0	-69.8	0.00	0.00	0.00
3,000.0	8.00	239.37	2,990.6	-5.9	-36.0	-76.7	0.00	0.00	0.00
3,100.0	8.00	239.37	3,089.6	-13.0	-48.0	-83.7	0.00	0.00	0.00
3,200.0	8.00	239.37	3,188.6	-20.1	-59.9	-90.7	0.00	0.00	0.00
3,300.0	8.00	239.37	3,287.7	-27.1	-71.9	-97.6	0.00	0.00	0.00
3,400.0	8.00	239.37	3,386.7	-34.2	-83.9	-104.6	0.00	0.00	0.00
3,438.6	8.00	239.37	3,424.9	-37.0	-88.5	-107.3	0.00	0.00	0.00
Z (Castile (T))									
3,500.0	8.00	239.37	3,485.7	-41.3	-95.9	-111.6	0.00	0.00	0.00
3,600.0	8.00	239.37	3,584.8	-48.4	-107.8	-118.6	0.00	0.00	0.00
3,700.0	8.00	239.37	3,683.8	-55.5	-119.8	-125.5	0.00	0.00	0.00
3,800.0	8.00	239.37	3,782.8	-62.6	-131.8	-132.5	0.00	0.00	0.00
3,900.0	8.00	239.37	3,881.8	-69.7	-143.8	-139.5	0.00	0.00	0.00
4,000.0	8.00	239.37	3,980.9	-76.8	-155.8	-146.4	0.00	0.00	0.00
4,100.0	8.00	239.37	4,079.9	-83.9	-167.7	-153.4	0.00	0.00	0.00
4,200.0	8.00	239.37	4,178.9	-91.0	-179.7	-160.4	0.00	0.00	0.00

Planning Report

Database:	EDM 5000.14 Server	Local Co-ordinate Reference:	Site Rodney Robinson
Company:	Matador Production Company	TVD Reference:	KB @ 3746.5usft
Project:	Antelope Ridge	MD Reference:	KB @ 3746.5usft
Site:	Rodney Robinson	North Reference:	Grid
Well:	Rodney Robinson Fed Com #103H	Survey Calculation Method:	Minimum Curvature
Wellbore:	Wellbore #1		
Design:	BLM Plan #1		

Planned Survey									
Measured Depth (usft)	Inclination (°)	Azimuth (°)	Vertical Depth (usft)	+N/-S (usft)	+E/-W (usft)	Vertical Section (usft)	Dogleg Rate (°/100usft)	Build Rate (°/100usft)	Turn Rate (°/100usft)
4,300.0	8.00	239.37	4,277.9	-98.0	-191.7	-167.4	0.00	0.00	0.00
4,400.0	8.00	239.37	4,377.0	-105.1	-203.7	-174.3	0.00	0.00	0.00
4,500.0	8.00	239.37	4,476.0	-112.2	-215.6	-181.3	0.00	0.00	0.00
4,600.0	8.00	239.37	4,575.0	-119.3	-227.6	-188.3	0.00	0.00	0.00
4,700.0	8.00	239.37	4,674.0	-126.4	-239.6	-195.2	0.00	0.00	0.00
4,800.0	8.00	239.37	4,773.1	-133.5	-251.6	-202.2	0.00	0.00	0.00
4,900.0	8.00	239.37	4,872.1	-140.6	-263.5	-209.2	0.00	0.00	0.00
5,000.0	8.00	239.37	4,971.1	-147.7	-275.5	-216.1	0.00	0.00	0.00
5,026.7	8.00	239.37	4,997.5	-149.6	-278.7	-218.0	0.00	0.00	0.00
Z (G30:CS14-CSB)									
5,065.3	8.00	239.37	5,035.8	-152.3	-283.3	-220.7	0.00	0.00	0.00
Z (G26: Bell Cyn.)									
5,100.0	8.00	239.37	5,070.2	-154.8	-287.5	-223.1	0.00	0.00	0.00
5,200.0	8.00	239.37	5,169.2	-161.9	-299.5	-230.1	0.00	0.00	0.00
5,300.0	8.00	239.37	5,268.2	-169.0	-311.4	-237.1	0.00	0.00	0.00
5,400.0	8.00	239.37	5,367.2	-176.0	-323.4	-244.0	0.00	0.00	0.00
5,500.0	8.00	239.37	5,466.3	-183.1	-335.4	-251.0	0.00	0.00	0.00
5,600.0	8.00	239.37	5,565.3	-190.2	-347.4	-258.0	0.00	0.00	0.00
5,700.0	8.00	239.37	5,664.3	-197.3	-359.3	-264.9	0.00	0.00	0.00
5,800.0	8.00	239.37	5,763.3	-204.4	-371.3	-271.9	0.00	0.00	0.00
5,900.0	8.00	239.37	5,862.4	-211.5	-383.3	-278.9	0.00	0.00	0.00
5,920.2	8.00	239.37	5,882.3	-212.9	-385.7	-280.3	0.00	0.00	0.00
Z (G13: Cherry Cyn.)									
6,000.0	8.00	239.37	5,961.4	-218.6	-395.3	-285.9	0.00	0.00	0.00
6,100.0	8.00	239.37	6,060.4	-225.7	-407.2	-292.8	0.00	0.00	0.00
6,200.0	8.00	239.37	6,159.4	-232.8	-419.2	-299.8	0.00	0.00	0.00
6,300.0	8.00	239.37	6,258.5	-239.9	-431.2	-306.8	0.00	0.00	0.00
6,400.0	8.00	239.37	6,357.5	-246.9	-443.2	-313.7	0.00	0.00	0.00
6,500.0	8.00	239.37	6,456.5	-254.0	-455.1	-320.7	0.00	0.00	0.00
6,600.0	8.00	239.37	6,555.6	-261.1	-467.1	-327.7	0.00	0.00	0.00
6,700.0	8.00	239.37	6,654.6	-268.2	-479.1	-334.7	0.00	0.00	0.00
6,800.0	8.00	239.37	6,753.6	-275.3	-491.1	-341.6	0.00	0.00	0.00
6,900.0	8.00	239.37	6,852.6	-282.4	-503.0	-348.6	0.00	0.00	0.00
7,000.0	8.00	239.37	6,951.7	-289.5	-515.0	-355.6	0.00	0.00	0.00
7,100.0	8.00	239.37	7,050.7	-296.6	-527.0	-362.5	0.00	0.00	0.00
7,139.4	8.00	239.37	7,089.7	-299.4	-531.7	-365.3	0.00	0.00	0.00
Start Drop -1.50									
7,200.0	7.09	239.37	7,149.8	-303.4	-538.6	-369.3	1.50	-1.50	0.00
7,269.1	6.05	239.37	7,218.5	-307.5	-545.4	-373.2	1.50	-1.50	0.00
Z (G7: Brushy Cyn.) Antelope Ridge									
7,300.0	5.59	239.37	7,249.2	-309.1	-548.1	-374.8	1.50	-1.50	0.00
7,400.0	4.09	239.37	7,348.8	-313.4	-555.3	-379.0	1.50	-1.50	0.00
7,500.0	2.59	239.37	7,448.6	-316.3	-560.3	-382.0	1.50	-1.50	0.00
7,600.0	1.09	239.37	7,548.6	-318.0	-563.1	-383.6	1.50	-1.50	0.00
7,672.8	0.00	0.00	7,621.3	-318.3	-563.7	-383.9	1.50	-1.50	0.00
Start 1249.7 hold at 7672.8 MD									
7,700.0	0.00	0.00	7,648.6	-318.3	-563.7	-383.9	0.00	0.00	0.00
7,800.0	0.00	0.00	7,748.6	-318.3	-563.7	-383.9	0.00	0.00	0.00
7,900.0	0.00	0.00	7,848.6	-318.3	-563.7	-383.9	0.00	0.00	0.00
8,000.0	0.00	0.00	7,948.6	-318.3	-563.7	-383.9	0.00	0.00	0.00
8,100.0	0.00	0.00	8,048.6	-318.3	-563.7	-383.9	0.00	0.00	0.00
8,200.0	0.00	0.00	8,148.6	-318.3	-563.7	-383.9	0.00	0.00	0.00
8,300.0	0.00	0.00	8,248.6	-318.3	-563.7	-383.9	0.00	0.00	0.00

Planning Report

Database:	EDM 5000.14 Server	Local Co-ordinate Reference:	Site Rodney Robinson
Company:	Matador Production Company	TVD Reference:	KB @ 3746.5usft
Project:	Antelope Ridge	MD Reference:	KB @ 3746.5usft
Site:	Rodney Robinson	North Reference:	Grid
Well:	Rodney Robinson Fed Com #103H	Survey Calculation Method:	Minimum Curvature
Wellbore:	Wellbore #1		
Design:	BLM Plan #1		

Planned Survey									
Measured Depth (usft)	Inclination (°)	Azimuth (°)	Vertical Depth (usft)	+N/-S (usft)	+E/-W (usft)	Vertical Section (usft)	Dogleg Rate (°/100usft)	Build Rate (°/100usft)	Turn Rate (°/100usft)
8,400.0	0.00	0.00	8,348.6	-318.3	-563.7	-383.9	0.00	0.00	0.00
8,500.0	0.00	0.00	8,448.6	-318.3	-563.7	-383.9	0.00	0.00	0.00
8,600.0	0.00	0.00	8,548.6	-318.3	-563.7	-383.9	0.00	0.00	0.00
8,700.0	0.00	0.00	8,648.6	-318.3	-563.7	-383.9	0.00	0.00	0.00
8,800.0	0.00	0.00	8,748.6	-318.3	-563.7	-383.9	0.00	0.00	0.00
8,850.0	0.00	0.00	8,798.6	-318.3	-563.7	-383.9	0.00	0.00	0.00
Z (G4: BSG L (CS9))									
8,900.0	0.00	0.00	8,848.6	-318.3	-563.7	-383.9	0.00	0.00	0.00
8,922.4	0.00	0.00	8,871.0	-318.3	-563.7	-383.9	0.00	0.00	0.00
Start Build 10.00 - VP - Rodney Robinson Fed Com #103H									
9,000.0	7.76	11.20	8,948.3	-313.2	-562.7	-378.8	10.00	10.00	0.00
9,100.0	17.76	11.20	9,045.7	-291.5	-558.4	-357.2	10.00	10.00	0.00
9,200.0	27.76	11.20	9,137.8	-253.6	-550.9	-319.4	10.00	10.00	0.00
9,300.0	37.76	11.20	9,221.8	-200.6	-540.4	-266.5	10.00	10.00	0.00
9,400.0	47.76	11.20	9,295.2	-134.1	-527.2	-200.1	10.00	10.00	0.00
9,500.0	57.76	11.20	9,355.6	-56.1	-511.8	-122.2	10.00	10.00	0.00
9,600.0	67.76	11.20	9,401.3	31.0	-494.5	-35.3	10.00	10.00	0.00
9,700.0	77.76	11.20	9,430.9	124.5	-476.0	58.1	10.00	10.00	0.00
9,800.0	87.76	11.20	9,443.5	221.7	-456.8	155.1	10.00	10.00	0.00
9,822.4	90.00	11.20	9,444.0	243.7	-452.4	177.0	10.00	10.00	0.00
Start DLS 2.00 TFO -90.00									
9,900.0	90.00	9.65	9,444.0	320.0	-438.4	253.2	2.00	0.00	-2.00
10,000.0	90.00	7.65	9,444.0	418.9	-423.3	351.9	2.00	0.00	-2.00
10,100.0	90.00	5.65	9,444.0	518.2	-411.8	451.1	2.00	0.00	-2.00
10,200.0	90.00	3.65	9,444.0	617.9	-403.7	550.6	2.00	0.00	-2.00
10,300.0	90.00	1.65	9,444.0	717.8	-399.0	650.5	2.00	0.00	-2.00
10,400.0	90.00	359.65	9,444.0	817.7	-397.9	750.4	2.00	0.00	-2.00
10,411.0	90.00	359.43	9,444.0	828.7	-398.0	761.4	2.00	0.00	-2.00
Start 9305.6 hold at 10411.0 MD									
10,500.0	90.00	359.43	9,444.0	917.7	-398.9	850.4	0.00	0.00	0.00
10,600.0	90.00	359.43	9,444.0	1,017.7	-399.9	950.4	0.00	0.00	0.00
10,700.0	90.00	359.43	9,444.0	1,117.7	-400.9	1,050.4	0.00	0.00	0.00
10,800.0	90.00	359.43	9,444.0	1,217.7	-401.9	1,150.4	0.00	0.00	0.00
10,900.0	90.00	359.43	9,444.0	1,317.7	-402.9	1,250.4	0.00	0.00	0.00
11,000.0	90.00	359.43	9,444.0	1,417.7	-403.9	1,350.4	0.00	0.00	0.00
11,100.0	90.00	359.43	9,444.0	1,517.7	-404.9	1,450.4	0.00	0.00	0.00
11,200.0	90.00	359.43	9,444.0	1,617.7	-405.9	1,550.4	0.00	0.00	0.00
11,300.0	90.00	359.43	9,444.0	1,717.7	-406.9	1,650.4	0.00	0.00	0.00
11,400.0	90.00	359.43	9,444.0	1,817.7	-407.9	1,750.4	0.00	0.00	0.00
11,500.0	90.00	359.43	9,444.0	1,917.7	-408.8	1,850.4	0.00	0.00	0.00
11,600.0	90.00	359.43	9,444.0	2,017.7	-409.8	1,950.4	0.00	0.00	0.00
11,700.0	90.00	359.43	9,444.0	2,117.7	-410.8	2,050.4	0.00	0.00	0.00
11,800.0	90.00	359.43	9,444.0	2,217.7	-411.8	2,150.4	0.00	0.00	0.00
11,900.0	90.00	359.43	9,444.0	2,317.7	-412.8	2,250.4	0.00	0.00	0.00
12,000.0	90.00	359.43	9,444.0	2,417.7	-413.8	2,350.4	0.00	0.00	0.00
12,100.0	90.00	359.43	9,444.0	2,517.7	-414.8	2,450.4	0.00	0.00	0.00
12,200.0	90.00	359.43	9,444.0	2,617.7	-415.8	2,550.4	0.00	0.00	0.00
12,300.0	90.00	359.43	9,444.0	2,717.7	-416.8	2,650.4	0.00	0.00	0.00
12,400.0	90.00	359.43	9,444.0	2,817.6	-417.8	2,750.4	0.00	0.00	0.00
12,500.0	90.00	359.43	9,444.0	2,917.6	-418.8	2,850.4	0.00	0.00	0.00
12,600.0	90.00	359.43	9,444.0	3,017.6	-419.8	2,950.4	0.00	0.00	0.00
12,700.0	90.00	359.43	9,444.0	3,117.6	-420.8	3,050.4	0.00	0.00	0.00
12,800.0	90.00	359.43	9,444.0	3,217.6	-421.8	3,150.4	0.00	0.00	0.00

Planning Report

Database:	EDM 5000.14 Server	Local Co-ordinate Reference:	Site Rodney Robinson
Company:	Matador Production Company	TVD Reference:	KB @ 3746.5usft
Project:	Antelope Ridge	MD Reference:	KB @ 3746.5usft
Site:	Rodney Robinson	North Reference:	Grid
Well:	Rodney Robinson Fed Com #103H	Survey Calculation Method:	Minimum Curvature
Wellbore:	Wellbore #1		
Design:	BLM Plan #1		

Planned Survey									
Measured Depth (usft)	Inclination (°)	Azimuth (°)	Vertical Depth (usft)	+N/-S (usft)	+E/-W (usft)	Vertical Section (usft)	Dogleg Rate (°/100usft)	Build Rate (°/100usft)	Turn Rate (°/100usft)
12,900.0	90.00	359.43	9,444.0	3,317.6	-422.8	3,250.4	0.00	0.00	0.00
13,000.0	90.00	359.43	9,444.0	3,417.6	-423.8	3,350.4	0.00	0.00	0.00
13,100.0	90.00	359.43	9,444.0	3,517.6	-424.8	3,450.4	0.00	0.00	0.00
13,200.0	90.00	359.43	9,444.0	3,617.6	-425.8	3,550.4	0.00	0.00	0.00
13,300.0	90.00	359.43	9,444.0	3,717.6	-426.8	3,650.4	0.00	0.00	0.00
13,400.0	90.00	359.43	9,444.0	3,817.6	-427.8	3,750.4	0.00	0.00	0.00
13,500.0	90.00	359.43	9,444.0	3,917.6	-428.8	3,850.4	0.00	0.00	0.00
13,600.0	90.00	359.43	9,444.0	4,017.6	-429.8	3,950.4	0.00	0.00	0.00
13,700.0	90.00	359.43	9,444.0	4,117.6	-430.8	4,050.4	0.00	0.00	0.00
13,800.0	90.00	359.43	9,444.0	4,217.6	-431.8	4,150.4	0.00	0.00	0.00
13,900.0	90.00	359.43	9,444.0	4,317.6	-432.7	4,250.4	0.00	0.00	0.00
14,000.0	90.00	359.43	9,444.0	4,417.6	-433.7	4,350.4	0.00	0.00	0.00
14,100.0	90.00	359.43	9,444.0	4,517.6	-434.7	4,450.4	0.00	0.00	0.00
14,200.0	90.00	359.43	9,444.0	4,617.6	-435.7	4,550.4	0.00	0.00	0.00
14,300.0	90.00	359.43	9,444.0	4,717.6	-436.7	4,650.4	0.00	0.00	0.00
14,400.0	90.00	359.43	9,444.0	4,817.5	-437.7	4,750.4	0.00	0.00	0.00
14,500.0	90.00	359.43	9,444.0	4,917.5	-438.7	4,850.4	0.00	0.00	0.00
14,600.0	90.00	359.43	9,444.0	5,017.5	-439.7	4,950.4	0.00	0.00	0.00
14,700.0	90.00	359.43	9,444.0	5,117.5	-440.7	5,050.4	0.00	0.00	0.00
14,800.0	90.00	359.43	9,444.0	5,217.5	-441.7	5,150.4	0.00	0.00	0.00
14,900.0	90.00	359.43	9,444.0	5,317.5	-442.7	5,250.4	0.00	0.00	0.00
15,000.0	90.00	359.43	9,444.0	5,417.5	-443.7	5,350.4	0.00	0.00	0.00
15,100.0	90.00	359.43	9,444.0	5,517.5	-444.7	5,450.4	0.00	0.00	0.00
15,200.0	90.00	359.43	9,444.0	5,617.5	-445.7	5,550.4	0.00	0.00	0.00
15,300.0	90.00	359.43	9,444.0	5,717.5	-446.7	5,650.4	0.00	0.00	0.00
15,400.0	90.00	359.43	9,444.0	5,817.5	-447.7	5,750.4	0.00	0.00	0.00
15,500.0	90.00	359.43	9,444.0	5,917.5	-448.7	5,850.4	0.00	0.00	0.00
15,600.0	90.00	359.43	9,444.0	6,017.5	-449.7	5,950.4	0.00	0.00	0.00
15,700.0	90.00	359.43	9,444.0	6,117.5	-450.7	6,050.4	0.00	0.00	0.00
15,800.0	90.00	359.43	9,444.0	6,217.5	-451.7	6,150.4	0.00	0.00	0.00
15,900.0	90.00	359.43	9,444.0	6,317.5	-452.7	6,250.4	0.00	0.00	0.00
16,000.0	90.00	359.43	9,444.0	6,417.5	-453.7	6,350.4	0.00	0.00	0.00
16,100.0	90.00	359.43	9,444.0	6,517.5	-454.7	6,450.4	0.00	0.00	0.00
16,200.0	90.00	359.43	9,444.0	6,617.5	-455.7	6,550.4	0.00	0.00	0.00
16,300.0	90.00	359.43	9,444.0	6,717.5	-456.6	6,650.4	0.00	0.00	0.00
16,400.0	90.00	359.43	9,444.0	6,817.4	-457.6	6,750.4	0.00	0.00	0.00
16,500.0	90.00	359.43	9,444.0	6,917.4	-458.6	6,850.4	0.00	0.00	0.00
16,600.0	90.00	359.43	9,444.0	7,017.4	-459.6	6,950.4	0.00	0.00	0.00
16,700.0	90.00	359.43	9,444.0	7,117.4	-460.6	7,050.4	0.00	0.00	0.00
16,800.0	90.00	359.43	9,444.0	7,217.4	-461.6	7,150.4	0.00	0.00	0.00
16,900.0	90.00	359.43	9,444.0	7,317.4	-462.6	7,250.4	0.00	0.00	0.00
17,000.0	90.00	359.43	9,444.0	7,417.4	-463.6	7,350.4	0.00	0.00	0.00
17,100.0	90.00	359.43	9,444.0	7,517.4	-464.6	7,450.4	0.00	0.00	0.00
17,200.0	90.00	359.43	9,444.0	7,617.4	-465.6	7,550.4	0.00	0.00	0.00
17,300.0	90.00	359.43	9,444.0	7,717.4	-466.6	7,650.4	0.00	0.00	0.00
17,400.0	90.00	359.43	9,444.0	7,817.4	-467.6	7,750.4	0.00	0.00	0.00
17,500.0	90.00	359.43	9,444.0	7,917.4	-468.6	7,850.4	0.00	0.00	0.00
17,600.0	90.00	359.43	9,444.0	8,017.4	-469.6	7,950.4	0.00	0.00	0.00
17,700.0	90.00	359.43	9,444.0	8,117.4	-470.6	8,050.4	0.00	0.00	0.00
17,800.0	90.00	359.43	9,444.0	8,217.4	-471.6	8,150.4	0.00	0.00	0.00
17,900.0	90.00	359.43	9,444.0	8,317.4	-472.6	8,250.4	0.00	0.00	0.00
18,000.0	90.00	359.43	9,444.0	8,417.4	-473.6	8,350.4	0.00	0.00	0.00
18,100.0	90.00	359.43	9,444.0	8,517.4	-474.6	8,450.4	0.00	0.00	0.00
18,200.0	90.00	359.43	9,444.0	8,617.4	-475.6	8,550.4	0.00	0.00	0.00

Planning Report

Database:	EDM 5000.14 Server	Local Co-ordinate Reference:	Site Rodney Robinson
Company:	Matador Production Company	TVD Reference:	KB @ 3746.5usft
Project:	Antelope Ridge	MD Reference:	KB @ 3746.5usft
Site:	Rodney Robinson	North Reference:	Grid
Well:	Rodney Robinson Fed Com #103H	Survey Calculation Method:	Minimum Curvature
Wellbore:	Wellbore #1		
Design:	BLM Plan #1		

Planned Survey										
Measured Depth (usft)	Inclination (°)	Azimuth (°)	Vertical Depth (usft)	+N/-S (usft)	+E/-W (usft)	Vertical Section (usft)	Dogleg Rate (°/100usft)	Build Rate (°/100usft)	Turn Rate (°/100usft)	
18,300.0	90.00	359.43	9,444.0	8,717.4	-476.6	8,650.4	0.00	0.00	0.00	
18,400.0	90.00	359.43	9,444.0	8,817.3	-477.6	8,750.4	0.00	0.00	0.00	
18,500.0	90.00	359.43	9,444.0	8,917.3	-478.6	8,850.4	0.00	0.00	0.00	
18,600.0	90.00	359.43	9,444.0	9,017.3	-479.6	8,950.4	0.00	0.00	0.00	
18,700.0	90.00	359.43	9,444.0	9,117.3	-480.5	9,050.4	0.00	0.00	0.00	
18,800.0	90.00	359.43	9,444.0	9,217.3	-481.5	9,150.4	0.00	0.00	0.00	
18,900.0	90.00	359.43	9,444.0	9,317.3	-482.5	9,250.4	0.00	0.00	0.00	
19,000.0	90.00	359.43	9,444.0	9,417.3	-483.5	9,350.4	0.00	0.00	0.00	
19,100.0	90.00	359.43	9,444.0	9,517.3	-484.5	9,450.4	0.00	0.00	0.00	
19,200.0	90.00	359.43	9,444.0	9,617.3	-485.5	9,550.4	0.00	0.00	0.00	
19,300.0	90.00	359.43	9,444.0	9,717.3	-486.5	9,650.4	0.00	0.00	0.00	
19,400.0	90.00	359.43	9,444.0	9,817.3	-487.5	9,750.4	0.00	0.00	0.00	
19,500.0	90.00	359.43	9,444.0	9,917.3	-488.5	9,850.4	0.00	0.00	0.00	
19,600.0	90.00	359.43	9,444.0	10,017.3	-489.5	9,950.4	0.00	0.00	0.00	
19,700.0	90.00	359.43	9,444.0	10,117.3	-490.5	10,050.4	0.00	0.00	0.00	
19,716.5	90.00	359.43	9,444.0	10,133.8	-490.7	10,067.0	0.00	0.00	0.00	
TD at 19716.5 - BHL - Rodney Robinson Fed Com #103H										

Design Targets										
Target Name	Dip Angle (°)	Dip Dir. (°)	TVD (usft)	+N/-S (usft)	+E/-W (usft)	Northing (usft)	Easting (usft)	Latitude	Longitude	
VP - Rodney Robinson F - hit/miss target - Shape - Point	0.00	0.00	8,871.0	-318.3	-563.7	477,993.00	723,509.00	32° 18' 43.364 N	103° 36' 35.538 W	
BHL - Rodney Robinson - plan hits target center - Point	0.00	0.00	9,444.0	10,133.8	-490.7	488,445.12	723,582.03	32° 20' 26.787 N	103° 36' 33.864 W	

Formations						
Measured Depth (usft)	Vertical Depth (usft)	Name	Lithology	Dip (°)	Dip Direction (°)	
739.3	738.3	Z (Dewey Lake (P))				
1,261.6	1,260.6	Z (Rustler)				
1,775.3	1,774.2	Z (Salado)				
3,438.6	3,423.9	Z (Castile (T))				
5,026.7	4,996.5	Z (G30:CS14-CSB)				
5,065.3	5,034.8	Z (G26: Bell Cyn.)				
5,920.2	5,881.3	Z (G13: Cherry Cyn.)				
7,269.1	7,217.5	Z (G7: Brushy Cyn.) Antelope Ridge				
8,850.0	8,797.6	Z (G4: BSLG (CS9))				

Planning Report

Database:	EDM 5000.14 Server	Local Co-ordinate Reference:	Site Rodney Robinson
Company:	Matador Production Company	TVD Reference:	KB @ 3746.5usft
Project:	Antelope Ridge	MD Reference:	KB @ 3746.5usft
Site:	Rodney Robinson	North Reference:	Grid
Well:	Rodney Robinson Fed Com #103H	Survey Calculation Method:	Minimum Curvature
Wellbore:	Wellbore #1		
Design:	BLM Plan #1		

Plan Annotations				
Measured Depth (usft)	Vertical Depth (usft)	Local Coordinates		Comment
		+N/-S (usft)	+E/-W (usft)	
1,500.0	1,500.0	72.2	95.8	Start Build 1.00
2,300.0	2,297.4	43.8	47.8	Start 4839.4 hold at 2300.0 MD
7,139.4	7,089.7	-299.4	-531.7	Start Drop -1.50
7,672.8	7,621.3	-318.3	-563.7	Start 1249.7 hold at 7672.8 MD
8,922.4	8,871.0	-318.3	-563.7	Start Build 10.00
9,822.4	9,444.0	243.7	-452.4	Start DLS 2.00 TFO -90.00
10,411.0	9,444.0	828.7	-398.0	Start 9305.6 hold at 10411.0 MD
19,716.5	9,444.0	10,133.8	-490.7	TD at 19716.5

Rodney Robinson Fed Com #103H
 SHL: 439' FSL & 1634' FEL Section 7
 BHL: 60' FNL & 2120' FEL Section 6
 Township/Range: 23S 33E
 Elevation Above Sea Level: 3718

Drilling Operation Plan

Proposed Drilling Depth: 19716' MD / 9444' TVD

Type of well: Horizontal well, no pilot hole

Permitted Well Type: Oil

Geologic Name of Surface Formation: Quaternary Deposits

KOP Lat/Long (NAD83): 32.3121671767 N / -103.6103548000 W

TD Lat/Long (NAD83): 32.3408957245 N / -103.6098910705 W

1. Estimated Tops

Formation	MD (ft)	TVD (ft)	Thickness (ft)	Lithology	Resource
Rustler	1,262	1,262	513	Anhydrite	Barren
Top of Salt	1,775	1,775	1,650	Salt	Barren
Castile	3,425	3,425	1,573	Salt	Barren
Base of Salt	4,998	4,998	38	Salt	Barren
Bell Canyon	5,036	5,036	846	Sandstone	Oil/Natural Gas
Cherry Canyon	5,882	5,882	1,336	Sandstone	Oil/Natural Gas
Brushy Canyon	7,218	7,218	1,581	Sandstone	Oil/Natural Gas
BoneSpring Lime	8,799	8,799		Limestone	Oil/Natural Gas
KOP	8,922	8,871		Limestone	Oil/Natural Gas
TD	19,716	9,444		Limestone	Oil/Natural Gas

2. Notable Zones

Avalon is the goal. All perforations will be within the setback requirements as prescribed or permitted by the New Mexico Oil Conservation Division. OSE estimated ground water depth at this location is 78'.

3. Pressure Control

Equipment

A 12,000' 5000-psi BOP stack consisting of 3 rams with 2 pipe rams, 1 blind ram, and one annular preventer will be utilized below surface casing to TD. See attachments for BOP and choke manifold diagrams.

An accumulator complying with Onshore Order #2 requirements for the pressure rating of the BOP stack will be present. A rotating head will also be installed as needed.

Testing Procedure

BOP will be inspected and operated as required in Onshore Order #2. Kelly cock and sub equipped with a full opening valve sized to fit the drill pipe and collars will be available on the rig floor in the open position.

A third party company will test the BOPs.

After setting surface casing, a minimum 5M BOPE system will be installed. Test pressures will be 250 psi low and 5000 psi high with the annular preventer being tested to 250 psi low and 2500 psi high before drilling below surface shoe. In the event that the rig drills multiple wells on the pad and any seal subject to test pressures are broken, a full BOP test will be performed when the rig returns and the 5M BOPE system is re-installed.

Variance Request

Matador requests a variance to have the option of running a multi-bowl wellhead assembly for setting the Intermediate 1 and Production Strings. The BOPs will not be tested again unless any flanges are separated.

Matador requests a variance to drill this well using a co-flex line between the BOP and choke manifold. Certification for proposed co-flex hose is attached. The hose is not required by the manufacturer to be anchored. If the specific hose is not available, then one of equal or higher rating will be used.

Matador requests a variance to have the option of batch drilling this well with other wells on the same pad. In the event that this well is batch drilled, the wellbore will be secured with a blind flange of like pressure. When the rig returns to this well and BOPs are installed, the operator will perform a full BOP test.

4. Casing & Cement

All casing will be API and new. See attached casing assumption worksheet.

String	Hole Size (in)	Set MD (ft)	Set TVD (ft)	Casing Size (in)	Wt. (lb/ft)	Grade	Joint	Collapse	Burst	Tension
Surface	17.5	0 - 1287	0 - 1287	13.375	54.5	J-55	BUTT	1.125	1.125	1.8
Intermediate 1	12.25	0 - 5061	0 - 5061	9.625	40	J-55	BUTT	1.125	1.125	1.8
Production	8.75	0 - 19716	0 - 9444	5.5	20	P-110	DWC/C-IS HT Plus	1.125	1.125	1.8

- All casing strings will be tested in accordance with Onshore Order #2 - III.B.1.h

- Rustler top will be validated via drilling parameters (i.e. reduction in ROP) and surface casing setting depth revised accordingly if needed

String	Type	Sacks	Yield	Cu. Ft.	Weight	Percent Excess	Top of Cement	Class	Blend
Surface	Lead	640	1.72	1101	12.5	50%	0	C	5% NaCl + LCM
	Tail	250	1.38	347	14.8	50%	987	C	5% NaCl + LCM
Intermediate 1	Lead	940	2.13	2004	12.6	50%	0	C	Bentonite + 1% CaCL ₂ + 8% NaCl + LCM
	Tail	370	1.38	504	14.8	50%	4061	C	5% NaCl + LCM
Production	Lead	500	2.22	1113	11.5	25%	4861	H	Fluid Loss + Dispersant + Retarder + LCM
	Tail	2650	1.35	3576	13.2	25%	8422	H	Fluid Loss + Dispersant + Retarder + LCM

5. Mud Program

An electronic Pason mud monitoring system complying with Onshore Order #2 will be used. All necessary mud products (barite, bentonite, LCM) for weight addition and fluid loss control will be on location at all times. Mud program is subject to change due to hole conditions.

Hole Section	Hole Size (in)	Mud Type	Interval MD (ft)	Density (lb/gal)	Viscosity	Fluid Loss
Surface	17.5	Spud Mud	0 - 1287	8.4 - 8.8	28-30	NC
Intermediate 1	12.25	Brine Water	1287 - 5061	9.5 - 10.2	28-30	NC
Production	8.75	Cut Brine/OBM	5061 - 19716	8.6 - 9.4	28-30	NC

6. Cores, Test, & Logs

No core or drill stem test is planned.

A 2-person mud logging program will be used from Kick-off point to TD.

No electric logs are planned at this time. GR will be collected through the MWD tools from Intermediate casing to TD. CBL with CCL will be run as far as gravity will let it fall to top of curve.

7. Down Hole Conditions

No abnormal pressure or temperature is expected. Maximum anticipated surface pressure is 2539 psi. Expected bottom hole temperature is 148° F.

In accordance with Onshore Order 6, Matador does not anticipate that there will be enough H2S from the surface to the Bone Spring formations to meet the BLM's minimum requirements for the submission of a "H2S Drilling Operation Plan" or "Public Protection Plan" for the drilling and completion of this well. Since we have a H2S safety package on all wells, attached is a "H2S Drilling Operations Plan." Adequate flare lines will be installed off the mud/gas separator where gas may be flared safely. All personnel will be familiar with all aspects of safe operation of the equipment being used.