

**DISTRICT I**  
1625 N. French Dr., Hobbs, NM 88240  
Phone: (575) 393-6161 Fax: (575) 393-0720

**DISTRICT II**  
811 S. First St., Artesia, NM 88210  
Phone: (575) 748-1283 Fax: (575) 748-9720

**DISTRICT III**  
1000 Rio Brazos Road, Aztec, NM 87410  
Phone: (505) 334-6178 Fax: (505) 334-6170

**DISTRICT IV**  
1220 S. St. Francis Dr., Santa Fe, NM 87505  
Phone: (505) 476-3460 Fax: (505) 476-3462

State of New Mexico  
Energy, Minerals & Natural Resources Department  
**OIL CONSERVATION DIVISION**  
1220 South St. Francis Dr.  
Santa Fe, New Mexico 87505

Form C-102  
Revised August 1, 2011  
Submit one copy to appropriate  
District Office

**OCD - HOBBS**  
**05/19/2020**  
**RECEIVED**

☐ AMENDED REPORT

**WELL LOCATION AND ACREAGE DEDICATION PLAT**

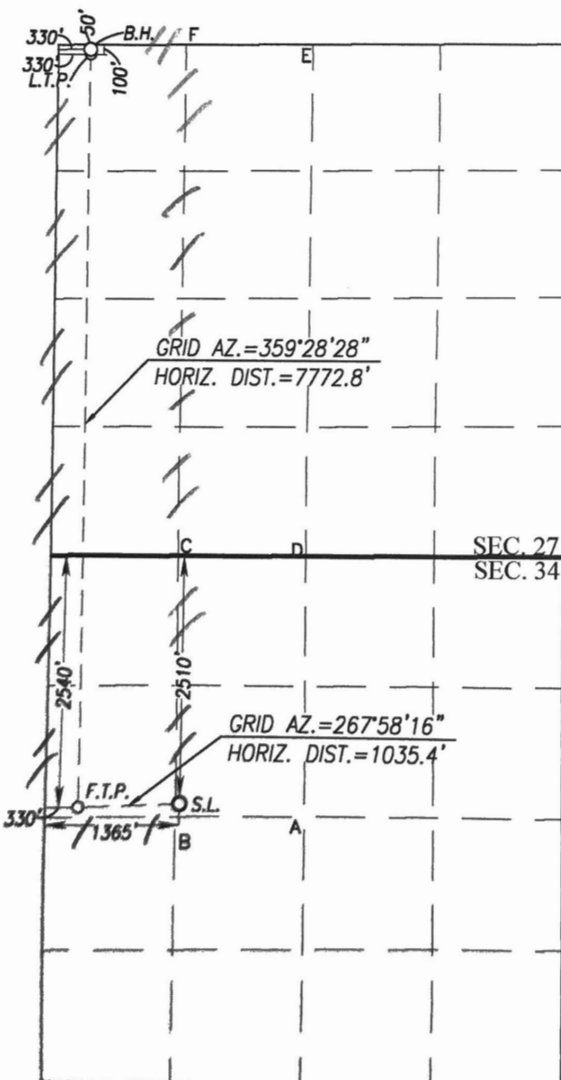
API Number <b>30-025-46098</b>	Pool Code <b>98094</b>	Pool Name <b>Bobcat Draw; Upper Wolfcamp</b>
Property Code <b>320524</b>	Property Name <b>ROJO 7811 34-27 FEDERAL</b>	Well Number <b>41H</b>
OGRID No. <b>260297</b>	Operator Name <b>BTA OIL PRODUCERS, LLC</b>	Elevation <b>3329'</b>

Surface Location									
UL or lot No.	Section	Township	Range	Lot Idn	Feet from the	North/South line	Feet from the	East/West line	County
F	34	25-S	33-E		2510	NORTH	1365	WEST	LEA

Bottom Hole Location If Different From Surface									
UL or lot No.	Section	Township	Range	Lot Idn	Feet from the	North/South line	Feet from the	East/West line	County
D <b>X</b>	27	25-S	33-E		50	NORTH	330	WEST	LEA

Dedicated Acres <b>240</b>	Joint or Infill	Consolidation Code	Order No.
-------------------------------	-----------------	--------------------	-----------

NO ALLOWABLE WILL BE ASSIGNED TO THIS COMPLETION UNTIL ALL INTERESTS HAVE BEEN CONSOLIDATED OR A NON-STANDARD UNIT HAS BEEN APPROVED BY THE DIVISION



SCALE: 1"=2000'

BOTTOM HOLE LOCATION	
NAD 83 NME	NAD 27 NME
Y= 404105.4 N	Y= 404047.6 N
X= 778389.4 E	X= 737203.1 E
LAT.=32.108651° N	LAT.=32.108526° N
LONG.=103.567726° W	LONG.=103.567255° W
LAST TAKE POINT	
NAD 83 NME	NAD 27 NME
Y= 404055.0 N	Y= 403997.2 N
X= 778389.9 E	X= 737203.6 E
LAT.=32.108512° N	LAT.=32.108387° N
LONG.=103.567726° W	LONG.=103.567255° W
CORNER COORDINATES TABLE	
NAD 27 NME	
A - Y= 396193.1 N, X= 739589.6 E	
B - Y= 396185.7 N, X= 738267.7 E	
C - Y= 398822.6 N, X= 738243.9 E	
D - Y= 398831.1 N, X= 739566.4 E	
E - Y= 404112.5 N, X= 739525.3 E	
F - Y= 404103.8 N, X= 738199.0 E	
CORNER COORDINATES TABLE	
NAD 83 NME	
A - Y= 396250.6 N, X= 780776.3 E	
B - Y= 396243.2 N, X= 779454.4 E	
C - Y= 398880.1 N, X= 779430.4 E	
D - Y= 398888.7 N, X= 780753.0 E	
E - Y= 404170.2 N, X= 780711.6 E	
F - Y= 404161.5 N, X= 779385.3 E	
FIRST TAKE POINT	
NAD 83 NME	NAD 27 NME
Y= 396334.3 N	Y= 396276.8 N
X= 778460.7 E	X= 737274.0 E
LAT.=32.087289° N	LAT.=32.087164° N
LONG.=103.567674° W	LONG.=103.567204° W
GEODETTIC COORDINATES	
NAD 83 NME	NAD 27 NME
SURFACE LOCATION	SURFACE LOCATION
Y= 396370.9 N	Y= 396313.4 N
X= 779495.2 E	X= 738308.6 E
LAT.=32.087369° N	LAT.=32.087244° N
LONG.=103.564333° W	LONG.=103.563863° W

**OPERATOR CERTIFICATION**

I hereby certify that the information herein is true and complete to the best of my knowledge and belief, and that this organization either owns a working interest or unleased mineral interest in the land including the proposed bottom hole location or has a right to drill this well at this location pursuant to a contract with an owner of such mineral or working interest, or to a voluntary pooling agreement or a compulsory pooling order heretofore entered by the division.

Signature *Sammy Hajar* Date **4-17-20**  
Printed Name **Sammy Hajar**  
E-mail Address **SHAJAR@BTAOIL.COM**

**SURVEYOR CERTIFICATION**

I hereby certify that the well location shown on this plat was plotted from field notes of actual surveys made by me or under my supervision, and that the same is true and correct to the best of my belief.

Date of Survey **MAY 2, 2018**  
Signature *Gary G. Eidson* Seal of Professional Surveyor

Signature *Gary G. Eidson* Date **4/16/2020**  
Certificate Number **12641** Gary G. Eidson 12641  
Ronald J. Eidson 3239  
LSL Rel. W.O. 18.11.0491 JWSC W.O. 20.13.0192