

DISTRICT I  
1625 N. FRENCH DR., HOBBS, NM 88240  
Phone: (575) 393-6161 Fax: (575) 393-0720

DISTRICT II  
811 S. FIRST ST., ARTESIA, NM 88210  
Phone: (575) 748-1283 Fax: (575) 748-9720

DISTRICT III  
1000 RIO BRAZOS RD., AZTEC, NM 87410  
Phone: (505) 334-6178 Fax: (505) 334-6170

DISTRICT IV  
1220 S. ST. FRANCIS DR., SANTA FE, NM 87505  
Phone: (505) 476-3460 Fax: (505) 476-3462

State of New Mexico  
Energy, Minerals & Natural Resources Department  
**OIL CONSERVATION DIVISION**  
1220 SOUTH ST. FRANCIS DR.  
Santa Fe, New Mexico 87505

**OCD - HOBBS**  
**04/16/2020**  
**RECEIVED**

Form C-102  
Revised August 1, 2011  
Submit one copy to appropriate  
District Office

☒ AMENDED REPORT

**WELL LOCATION AND ACREAGE DEDICATION PLAT**

API Number <b>30-025-46068</b>	Pool Code <b>98116</b>	Pool Name <b>WC-025 G-09 S253402N; Wolfcamp</b>
Property Code <b>325724</b>	Property Name <b>BROT HELM FEDERAL COM</b>	Well Number <b>701H</b>
OGRID No. <b>229137</b>	Operator Name <b>COG OPERATING, LLC</b>	Elevation <b>3420.6'</b>

**Surface Location**

UL or lot No. <b>A</b>	Section <b>35</b>	Township <b>24-S</b>	Range <b>34-E</b>	Lot Idn	Feet from the <b>250</b>	North/South line <b>NORTH</b>	Feet from the <b>437</b>	East/West line <b>EAST</b>	County <b>LEA</b>
---------------------------	----------------------	-------------------------	----------------------	---------	-----------------------------	----------------------------------	-----------------------------	-------------------------------	----------------------

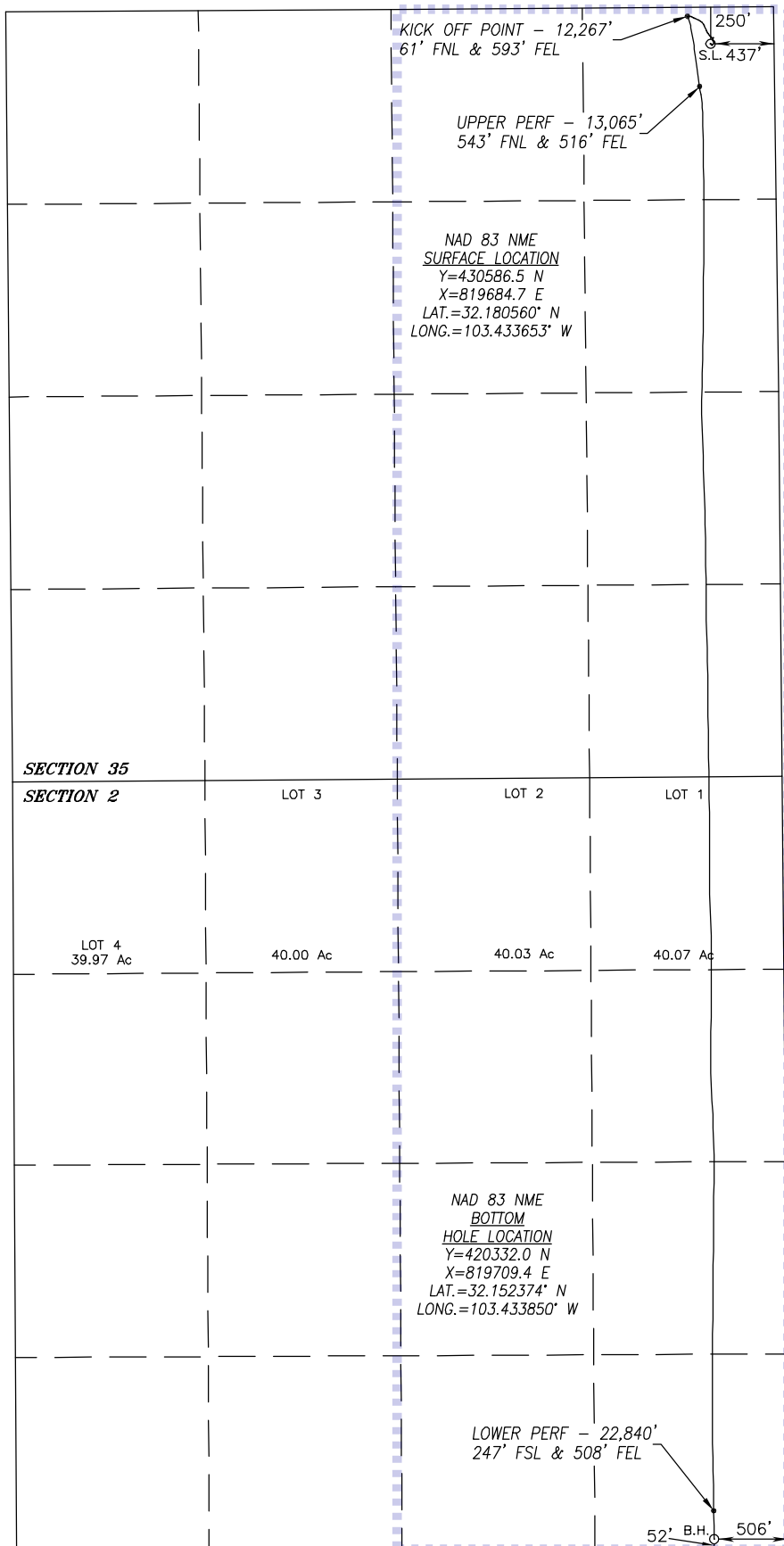
**Bottom Hole Location If Different From Surface**

UL or lot No. <b>P</b>	Section <b>2</b>	Township <b>25-S</b>	Range <b>34-E</b>	Lot Idn	Feet from the <b>52</b>	North/South line <b>SOUTH</b>	Feet from the <b>506</b>	East/West line <b>EAST</b>	County <b>LEA</b>
Dedicated Acres <b>640</b>	Joint or Infill	Consolidation Code	Order No.						

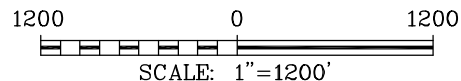
NO ALLOWABLE WILL BE ASSIGNED TO THIS COMPLETION UNTIL ALL INTERESTS HAVE BEEN CONSOLIDATED  
OR A NON-STANDARD UNIT HAS BEEN APPROVED BY THE DIVISION

SEE PAGE 2

Property Code <b>325724</b>	Property Name <b>BROT HELM FEDERAL COM</b>	Well Number <b>701H</b>
OGRID No. <b>229137</b>	Operator Name <b>COG OPERATING, LLC</b>	Elevation <b>3420.6'</b>



SURFACE INFO AND BOREPATH SHOWN HEREON  
IS BASED ON DIRECTIONAL SURVEY REPORT  
PROVIDED BY COG OPERATING, LLC FOR THE  
BROT HELM FEDERAL COM #701H SUPPLIED TO  
HARCROW SURVEYING, LLC ON MARCH 5, 2020



#### OPERATOR CERTIFICATION

I hereby certify that the information  
herein is true and complete to the best of  
my knowledge and belief, and that this  
organization either owns a working interest  
or unleased mineral interest in the land  
including the proposed bottom hole location  
or has a right to drill this well at this  
location pursuant to a contract with an  
owner of such mineral or working interest,  
or to a voluntary pooling agreement or a  
compulsory pooling order heretofore entered  
by the division.

03/24/20

Signature

Date

Amanda Avery

Printed Name

aavery@concho.com

E-mail Address

#### SURVEYOR CERTIFICATION

I hereby certify that the well location  
shown on this plat was plotted from field  
notes of actual surveys made by me or  
under my supervision, and that the same is  
true and correct to the best of my belief.

DEC. 17, 2018/NOV. 6, 2019

Date of Survey/Date of Geographic Survey

Signature & Seal of Professional Surveyor



Chad Harcrow

3/6/20

Certificate No. CHAD HARCROW 17777

Intent ☐ As Drilled ☐

API #		
Operator Name:	Property Name:	Well Number

Kick Off Point (KOP)

UL	Section	Township	Range	Lot	Feet	From N/S	Feet	From E/W	County
Latitude					Longitude				NAD

First Take Point (FTP)

UL	Section	Township	Range	Lot	Feet	From N/S	Feet	From E/W	County
Latitude					Longitude				NAD

Last Take Point (LTP)

UL	Section	Township	Range	Lot	Feet	From N/S	Feet	From E/W	County
Latitude					Longitude				NAD

Is this well the defining well for the Horizontal Spacing Unit? ☐

Is this well an infill well? ☐

If infill is yes please provide API if available, Operator Name and well number for Defining well for Horizontal Spacing Unit.

API #		
Operator Name:	Property Name:	Well Number