

DISTRICT I  
1625 N. French Dr., Hobbs, NM 88240  
Phone: (575) 393-6161 Fax: (575) 393-0720

DISTRICT II  
811 S. First St., Artesia, NM 88210  
Phone: (575) 748-1283 Fax: (575) 748-9720

DISTRICT III  
1000 Rio Brazos Road, Aztec, NM 87410  
Phone: (505) 334-6178 Fax: (505) 334-6170

DISTRICT IV  
1220 S. St. Francis Dr., Santa Fe, NM 87505  
Phone: (505) 476-3460 Fax: (505) 476-3462

State of New Mexico  
Energy, Minerals & Natural Resources Department  
OIL CONSERVATION DIVISION  
1220 South St. Francis Dr.  
Santa Fe, New Mexico 87505

Form C-102  
Revised August 1, 2011  
Submit one copy to appropriate  
District Office

AMENDED REPORT

WELL LOCATION AND ACREAGE DEDICATION PLAT

API Number 0-025-45496	Pool Code 98180	Pool Name BOBCAT DRAW UPPER WOLFCAMP
Property Code 317432	Property Name VACA DRAW 9418 10 FED	Well Number 16H
OGRID No. 260297	Operator Name BTA OIL PRODUCERS, LLC	Elevation 3376'

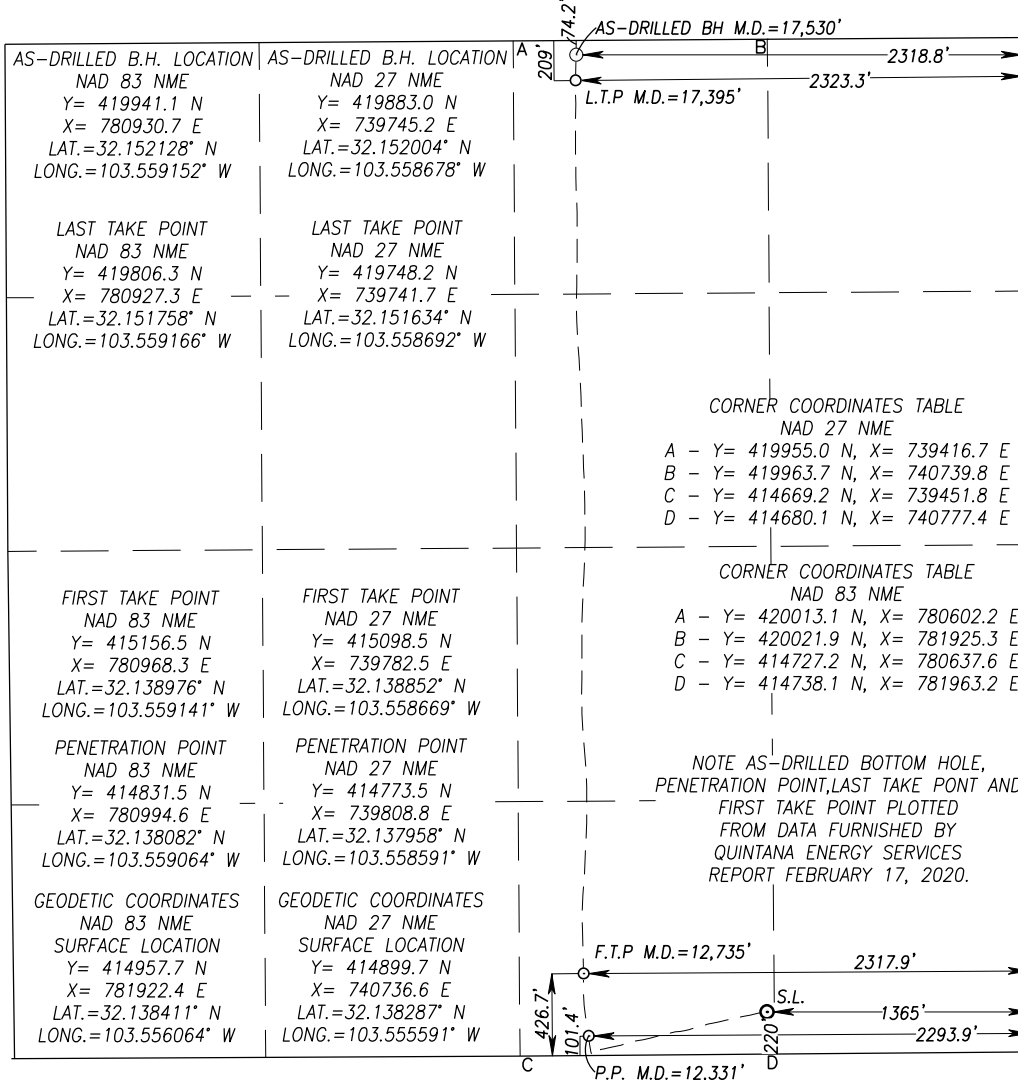
Surface Location

UL or lot No.	Section	Township	Range	Lot Idn	Feet from the	North/South line	Feet from the	East/West line	County
O	10	25-S	33-E		220	SOUTH	1365	EAST	LEA

AS-Drilled Bottom Hole Location If Different From Surface

UL or lot No.	Section	Township	Range	Lot Idn	Feet from the	North/South line	Feet from the	East/West line	County
B	10	25-S	33-E		74.2	NORTH	2318.8	EAST	LEA
Dedicated Acres 160	Joint or Infill	Consolidation Code	Order No.						

NO ALLOWABLE WILL BE ASSIGNED TO THIS COMPLETION UNTIL ALL INTERESTS HAVE BEEN CONSOLIDATED OR A NON-STANDARD UNIT HAS BEEN APPROVED BY THE DIVISION



OPERATOR CERTIFICATION

I hereby certify that the information herein is true and complete to the best of my knowledge and belief, and that this organization either owns a working interest or unleased mineral interest in the land including the proposed bottom hole location or has a right to drill this well at this location pursuant to a contract with an owner of such mineral or working interest, or to a voluntary pooling agreement or a compulsory pooling order heretofore entered by the division.

katy reddell 6/2/2020

Signature Date

KATY REDDELL

Printed Name

kreddell@btaoil.com

E-mail Address

SURVEYOR CERTIFICATION

I hereby certify that the well location shown on this plat was plotted from field notes of actual surveys made by me or under my supervision, and that the same is true and correct to the best of my belief.

MARCH 21, 2020

Date of Survey  
Signature Seal of Professional Surveyor



Ronald J. Eidson 06/10/2020

Certificate Number Gary G. Eidson 12641  
Ronald J. Eidson 3239

LSL Rel. W.O.: 17.11.0238 JWSC W.O.: 20.13.0220

Rec'd 6/4/2020

Intent  As Drilled

API # 30-025-45496		
Operator Name: BTA OIL PRODUCERS, LLC	Property Name: VACA DRAW 9418 10 FEDERAL	Well Number 16H

Kick Off Point (KOP)

UL	Section	Township	Range	Lot	Feet	From N/S	Feet	From E/W	County
	10	25S	33E		220	SOUTH	1365	EAST	LEA
Latitude 32.138411					Longitude 103.556064				NAD 83

First Take Point (FTP)

UL	Section	Township	Range	Lot	Feet	From N/S	Feet	From E/W	County
	10	25S	33E		426.7	SOUTH	2317.9	EAST	LEA
Latitude 32.138976					Longitude 103.559141				NAD 83

Last Take Point (LTP)

UL	Section	Township	Range	Lot	Feet	From N/S	Feet	From E/W	County
	10	25S	33E		209	NORTH	2323.3	EAST	LEA
Latitude 32.151758					Longitude 103.559166				NAD 83

Is this well the defining well for the Horizontal Spacing Unit?  YES

Is this well an infill well?  NO

If infill is yes please provide API if available, Operator Name and well number for Defining well for Horizontal Spacing Unit.

API #		
Operator Name:	Property Name:	Well Number

KZ 06/29/2018